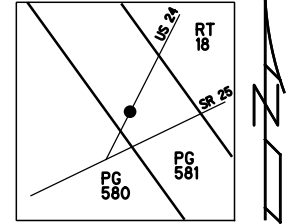


O.D.O.T. DISTRICT 2 SURVEY OFFICE (USE ONLY)

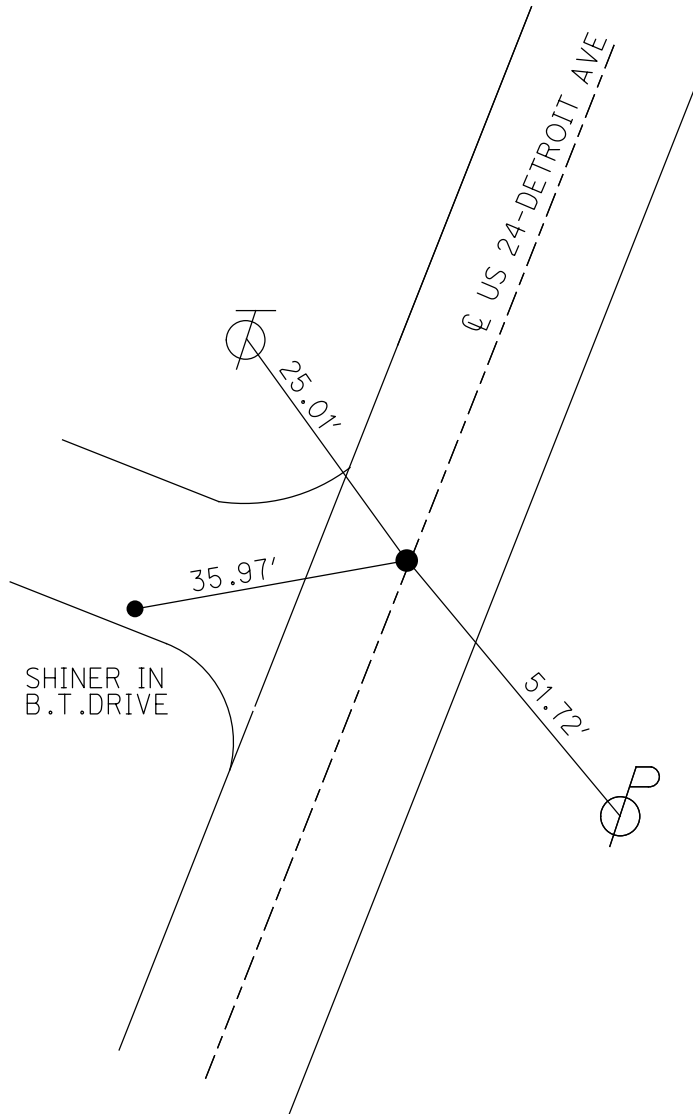
PERSONNEL _____ REFERENCE NO. 71 A SHEET 2 OF 18
NOTES MENNIT DATE 7/18/60 ROUTE US 24
H.C. _____ WEATHER CLEAR COUNTY LUCAS
R.C. _____ TEMP. 83° TOWNSHIP PRIVATE GRANT
DWG BY RHOADES PID _____ SECTION 581

TYPE MONUMENT NAIL/SHINER
ON SURFACE - ~~BELOW~~ ON
OFFSET \bar{C} PAVEMENT ON LT : RT
- TO - EDGE PAVEMENT
STATION: 987+35.6



HORZ. DATUM: _____ GEOID: _____
GRID: NORTHING: _____ EASTING: _____

RECORD: P.I.
STA. 6+00
 $\Delta = 3^\circ 00'$
 $D = 1^\circ 30'$
 $T = 100.04'$
 $E = 1.30'$
 $R = 3819.83'$
 $L = 200.00'$
1935 PLANS



PERSONNEL TITLE PERSONNEL TITLE

Merritt

COUNTY Lucas

DATE

S. R. 25 24

WEATHER

SEC. Burne to A.W. Trail

TEMP.

DESCRIPTION Reference - Control Points on Detroit

JOB NO.

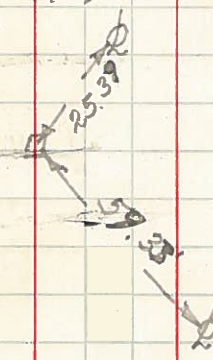
LEFT

CENTER LINE

RIGHT

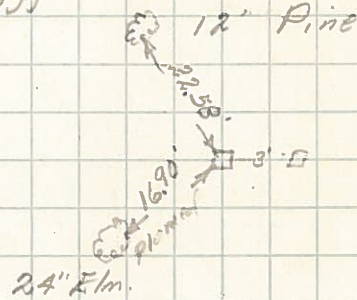
6+92.78 P.T.

Right Curb
3' off



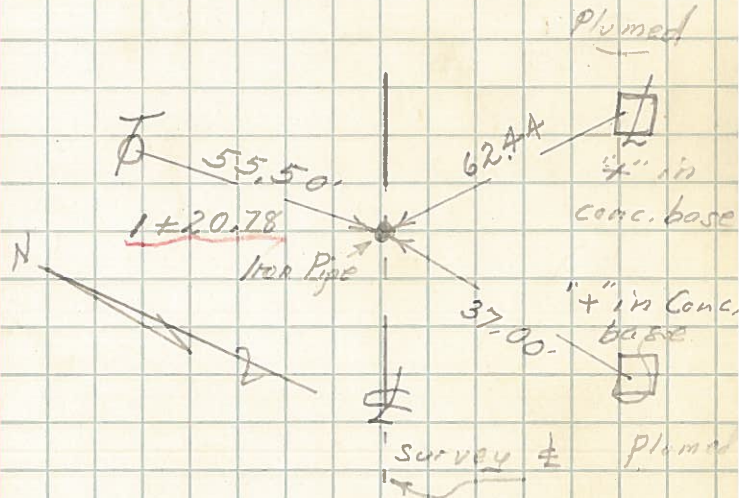
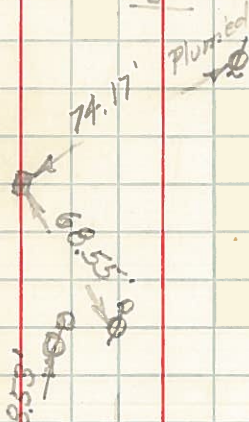
6+92.87 P.T. Left Curb

3' off



9+21.31 P.C. Right Curb

3' off.



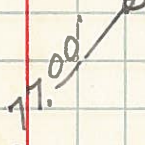
3' off -
of P.T. 2+89.02
24.89' RT.



4" in Conc. Drive

18+00.10'

"Iron Pipe"
in Conc.

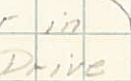


6+00

25.01'

35.97'

Shiner in
B.T. Drive



DETROIT

68.78'

DEVONSHIRE

53.33'

BYRNE

Survey