

O.D.O.T. DISTRICT 2 SURVEY OFFICE (USE ONLY)

PERSONNEL \_\_\_\_\_

REFERENCE NO. 72

SHEET 3 OF 18

NOTES MENNIT

DATE 7/18/60

ROUTE US 24

H.C. \_\_\_\_\_

WEATHER CLEAR

COUNTY LUCAS

R.C. \_\_\_\_\_

TEMP. 83°

TOWNSHIP PRIVATE GRANT

SECTION 581

DWG BY RHOADES

PID \_\_\_\_\_

TYPE MONUMENT NAIL/SHINNER

ON SURFACE - ~~BELOW~~ ON \_\_\_\_\_

OFFSET  $\odot$  PAVEMENT ON \_\_\_\_\_ LT : RT

- TO - EDGE PAVEMENT

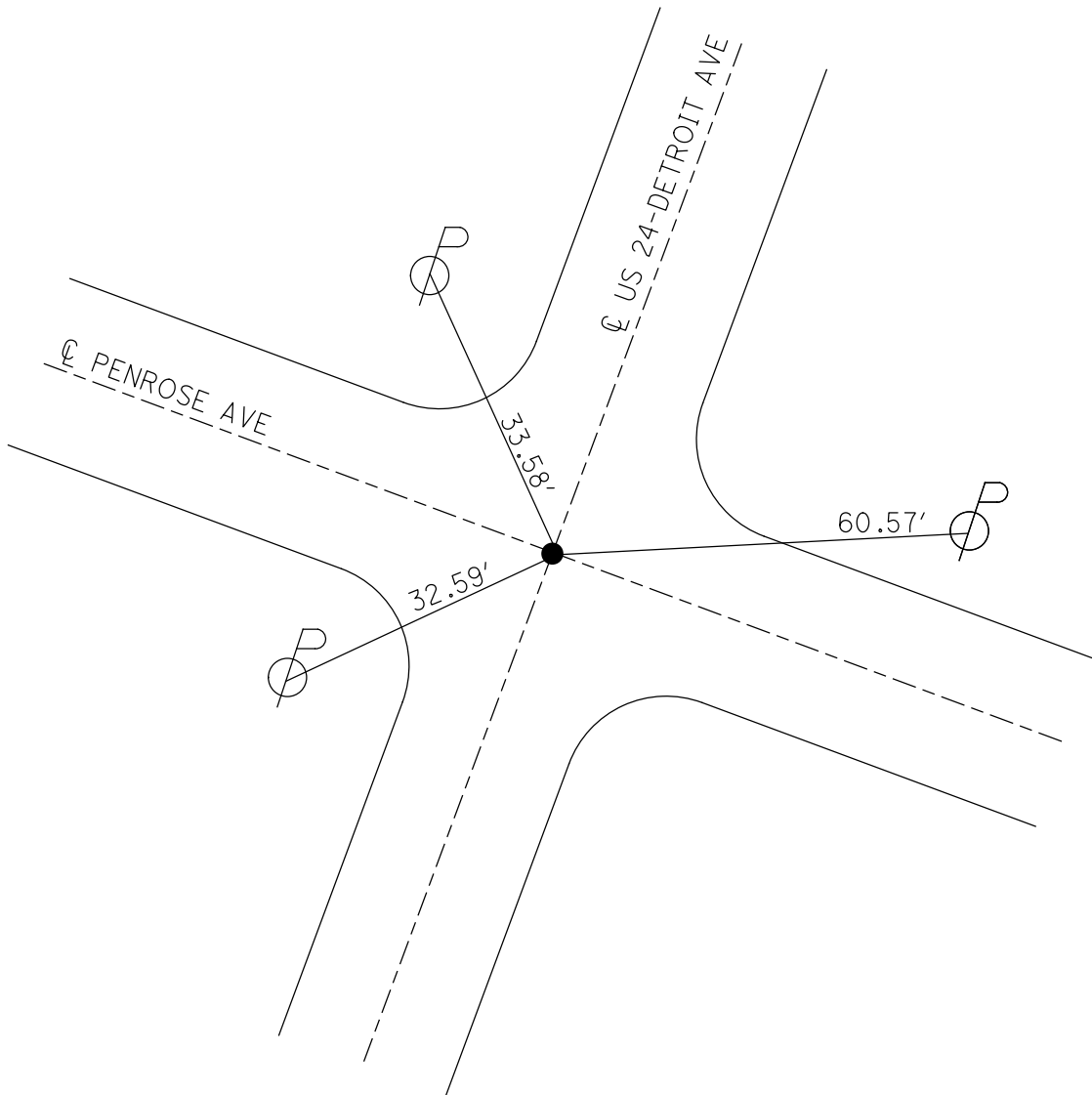
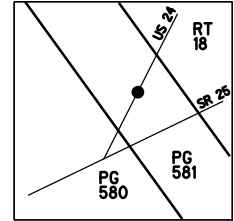
STATION: 991+05

HORIZ.DATUM: \_\_\_\_\_

GEOID: \_\_\_\_\_

GRID: NORTHING: \_\_\_\_\_

EASTING: \_\_\_\_\_



PERSONNEL TITLE PERSONNEL TITLE  
Mennitt

COUNTY Lucas DATE 7-18-60

S. R. 10-25 24 WEATHER clear

SEC. Bel. Bu. & A.D. in TEMP. 83°

DESCRIPTION Mon. Ref. (or Cont. Points @ side sts.) JOB NO.

LEFT CENTER LINE RIGHT

