

O.D.O.T. DISTRICT 2 SURVEY OFFICE (USE ONLY)

PERSONNEL

REFERENCE NO. 77 A

SHEET 7 OF 18

NOTES MENNIT

DATE 7/18/60

ROUTE US 24

H.C. _____

WEATHER CLEAR

COUNTY LUCAS

R.C. _____

TEMP. 83°

TOWNSHIP USR

SECTION 16

DWG BY RHOADES PID _____

T 3 N

TYPE MONUMENT UNKNOWN

ON SURFACE - ~~BELOW~~ ON

OFFSET $\text{\textcircled{C}}$ PAVEMENT ON _____ LT : RT

- TO - EDGE PAVEMENT

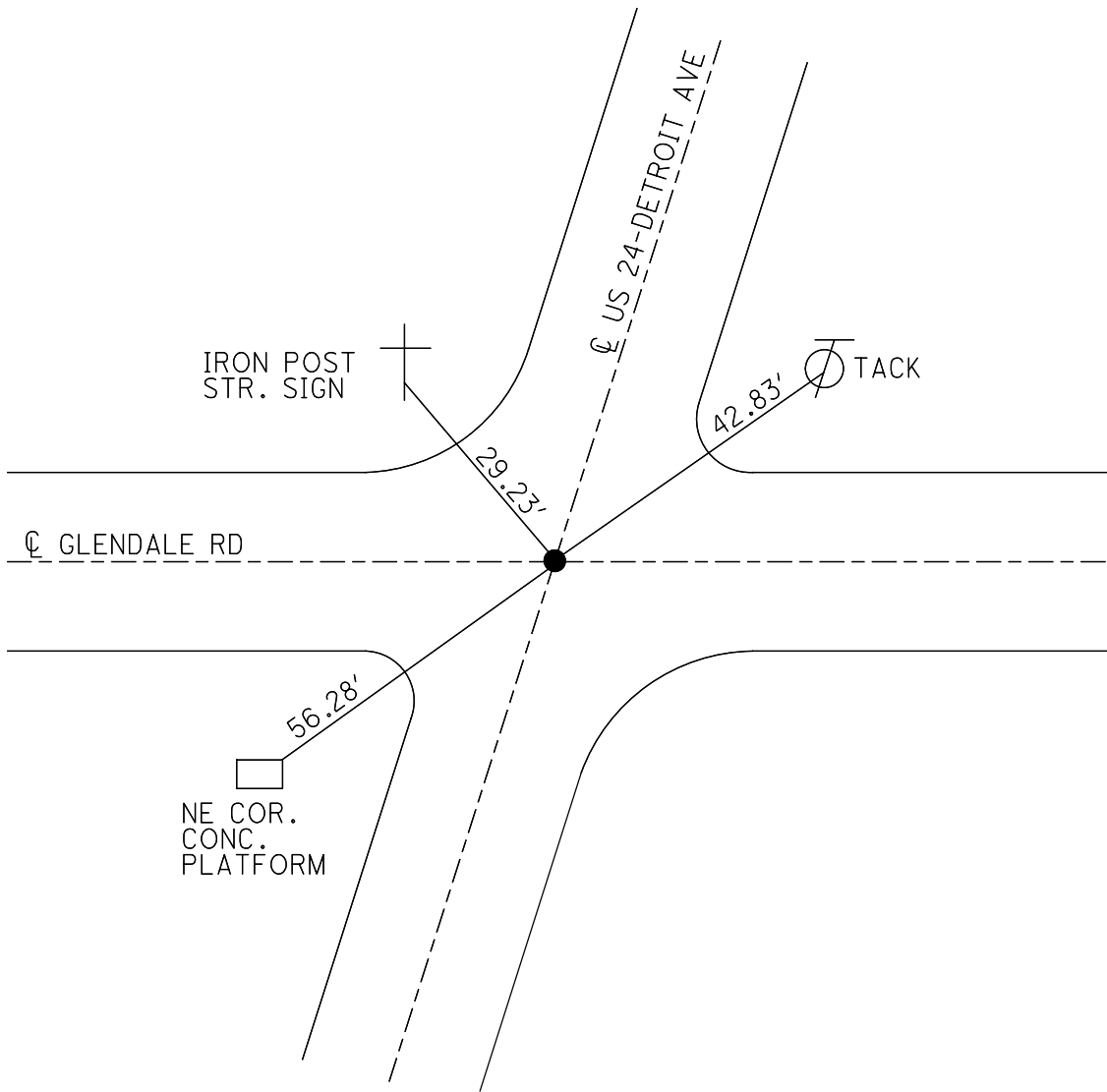
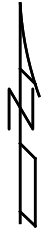
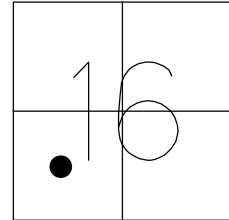
STATION: 1088+21

HORZ. DATUM: _____

GEOID: _____

GRID: NORTHING: _____

EASTING: _____



PERSONNEL TITLE PERSONNEL TITLE

COUNTY Lucas DATE _____S. R. 28 1/4 WEATHER _____SEC. Detroitave TEMP. _____

DESCRIPTION

LEFT

CENTER LINE

RIGHT

JOB NO.

Not in Book

New ϕ is 13.5 S. of old

Glendale Rd.

42.83' N.E. To Tack in T. Pole
 29.23' N.W. " Iron St. Sign P.
 36.28' S.W. " N.E. Cor. Conc. Platform

Schnieder Rd.

24.21 N.W. To X in Curb
 25.35 " " To Tack in T. Pole
 92.08 E.S.E. To near face N.W. bolt of Hyd.