

O.D.O.T. DISTRICT 2 SURVEY OFFICE (USE ONLY)

PERSONNEL

REFERENCE NO. 78 C

SHEET 11 OF 18

NOTES HOHENBERGER

DATE 10/31/77

ROUTE US 24

H.C. WILLIAMS

WEATHER _____

COUNTY LUCAS

R.C. GERDZINSKI

TEMP. _____

TOWNSHIP USR

SECTION 34

DWG BY RHOADES

PID _____

T 9 N R 7 E

TYPE MONUMENT LEAD PLUG W/TACK

ON SURFACE - ~~BELOW~~ ON _____

OFFSET \bar{C} PAVEMENT ON _____ LT : RT

- TO - EDGE PAVEMENT

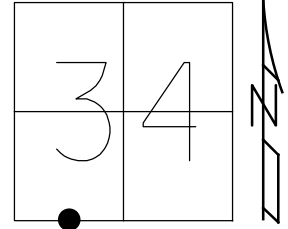
STATION: 1261+92

HORIZ.DATUM: _____

GEOID: _____

GRID: NORTHING: _____

EASTING: _____



* NO MEASUREMENTS RECORDED

"+" CUT IN WALK
 \pm 6' BEHIND CURB +

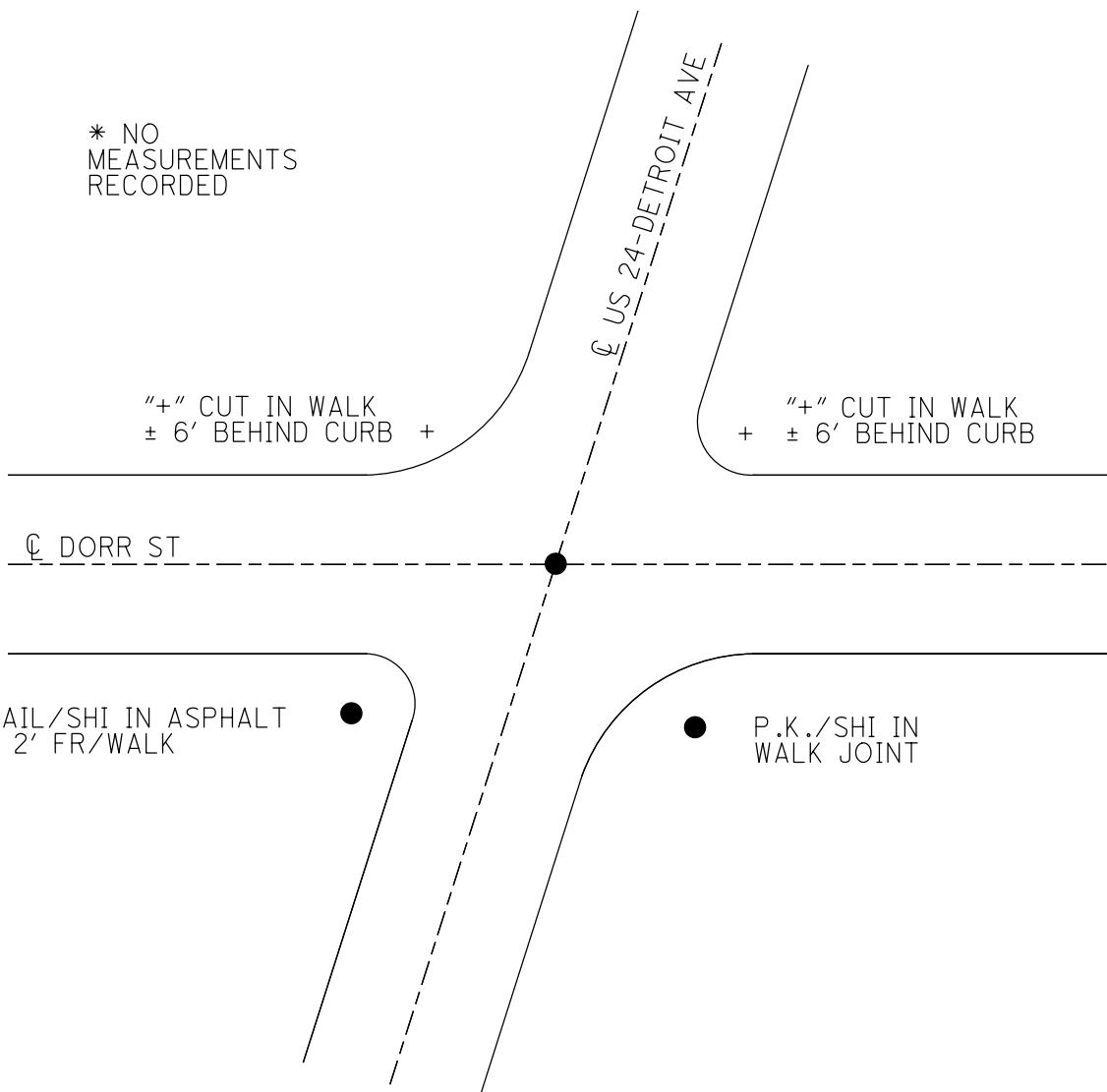
"+" CUT IN WALK
 \pm 6' BEHIND CURB

\bar{C} DORR ST

\bar{C} US 24-DETROIT AVE

NAIL/SHI IN ASPHALT
 \pm 2' FR/WALK

P.K./SHI IN WALK JOINT



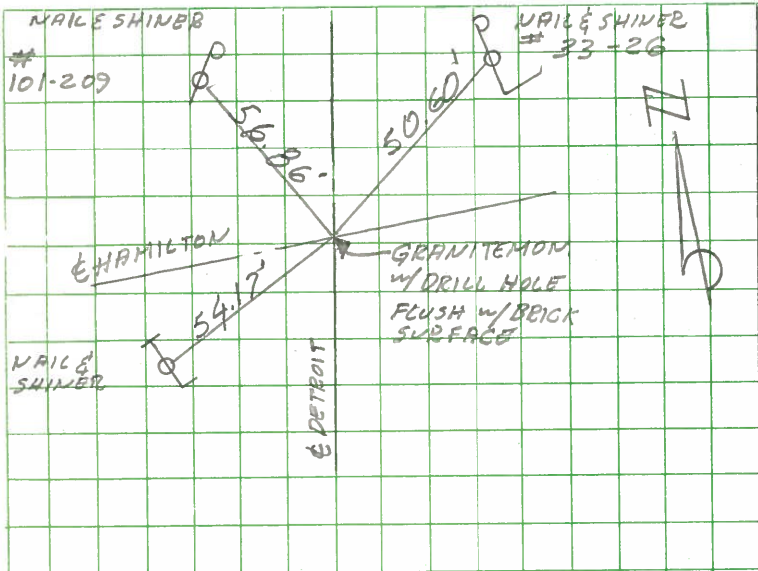
PERSONNEL	TITLE	PERSONNEL	TITLE
HOFENBERGER	IT		
WILLIAMS	φ		
GRUDZINSKI	T		

PROJECT _____ DATE 10/31/77

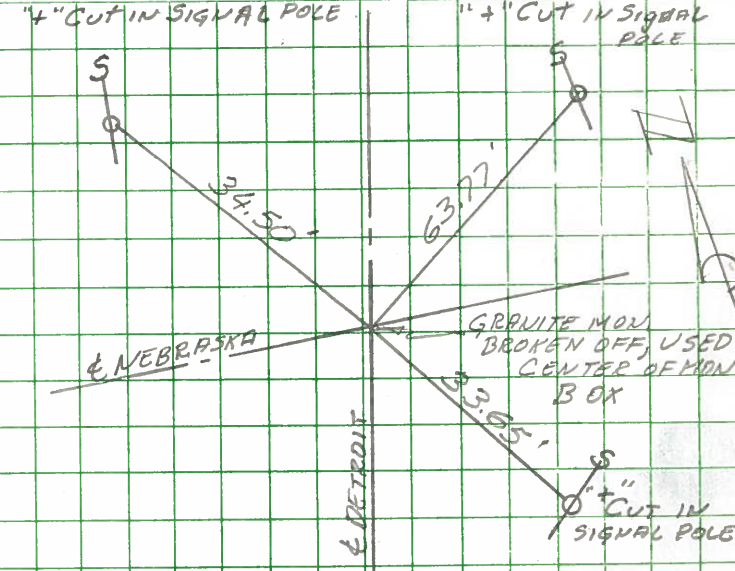
PROJECT LIMITS _____ WEATHER _____

FROM STA. _____ TO STA. _____ TEMP _____

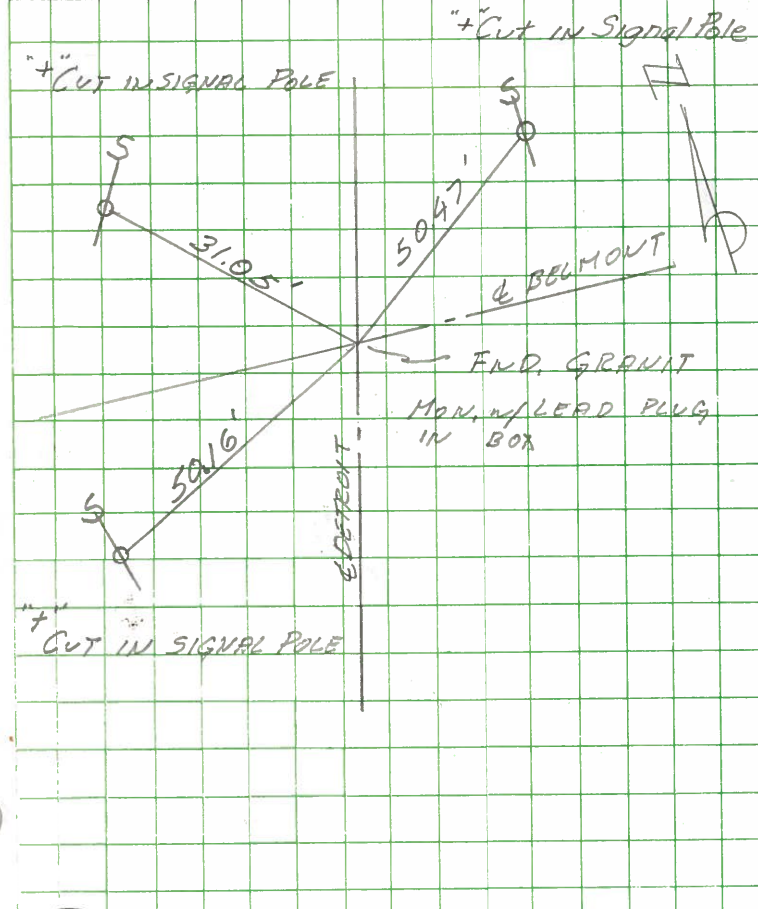
DESCRIPTION DETROIT AVE. RESURFACING (BUCKINGHAM TO DORR) REFERENCES



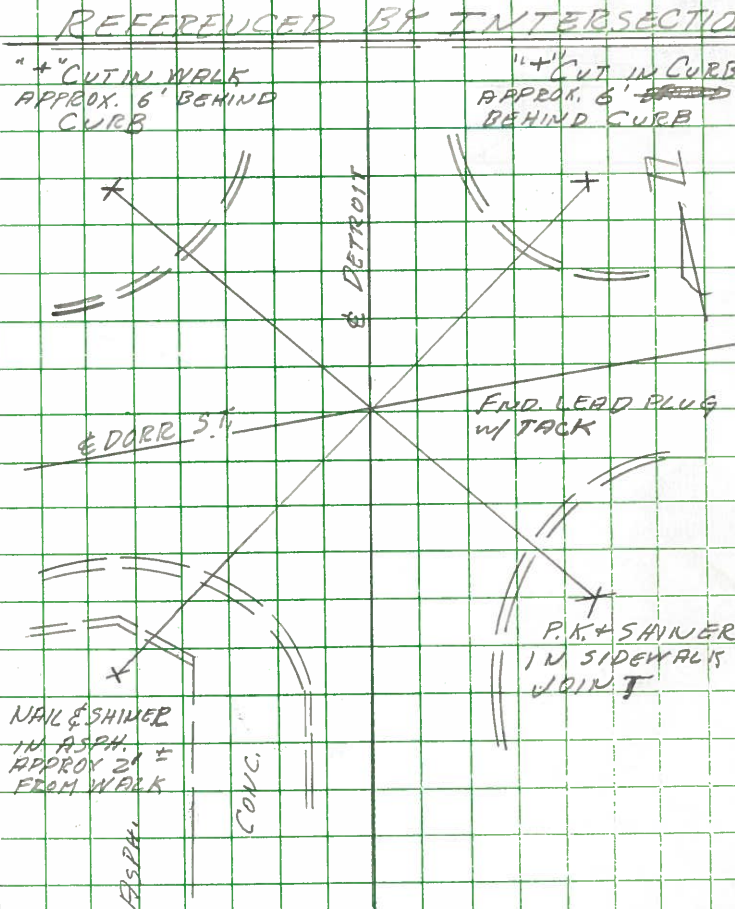
REFERENCE: DETROIT & HAMILTON INTERSECTION



REFERENCE: DETROIT & NEBRASKA INTERSECTION



REFERENCE: INTERSECTION OF DETROIT & BELMONT



REFERENCE: INTERSECTION OF DETROIT & DORR