

O.D.O.T. DISTRICT 2 SURVEY OFFICE

PERSONNEL _____ REFERENCE NO. 80 SHEET 1 OF 6

NOTES LDEHRKE

H.C. CANTERBURY DATE 3-29-94 ROUTE US. 24

R.C. VOGEL WEATHER CLOUDY COUNTY LUCAS

TOWNSHIP _____

SECTION CITY OF TOLEDO

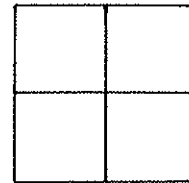
T _____ R _____

TYPE MONUMENT MON. BOX

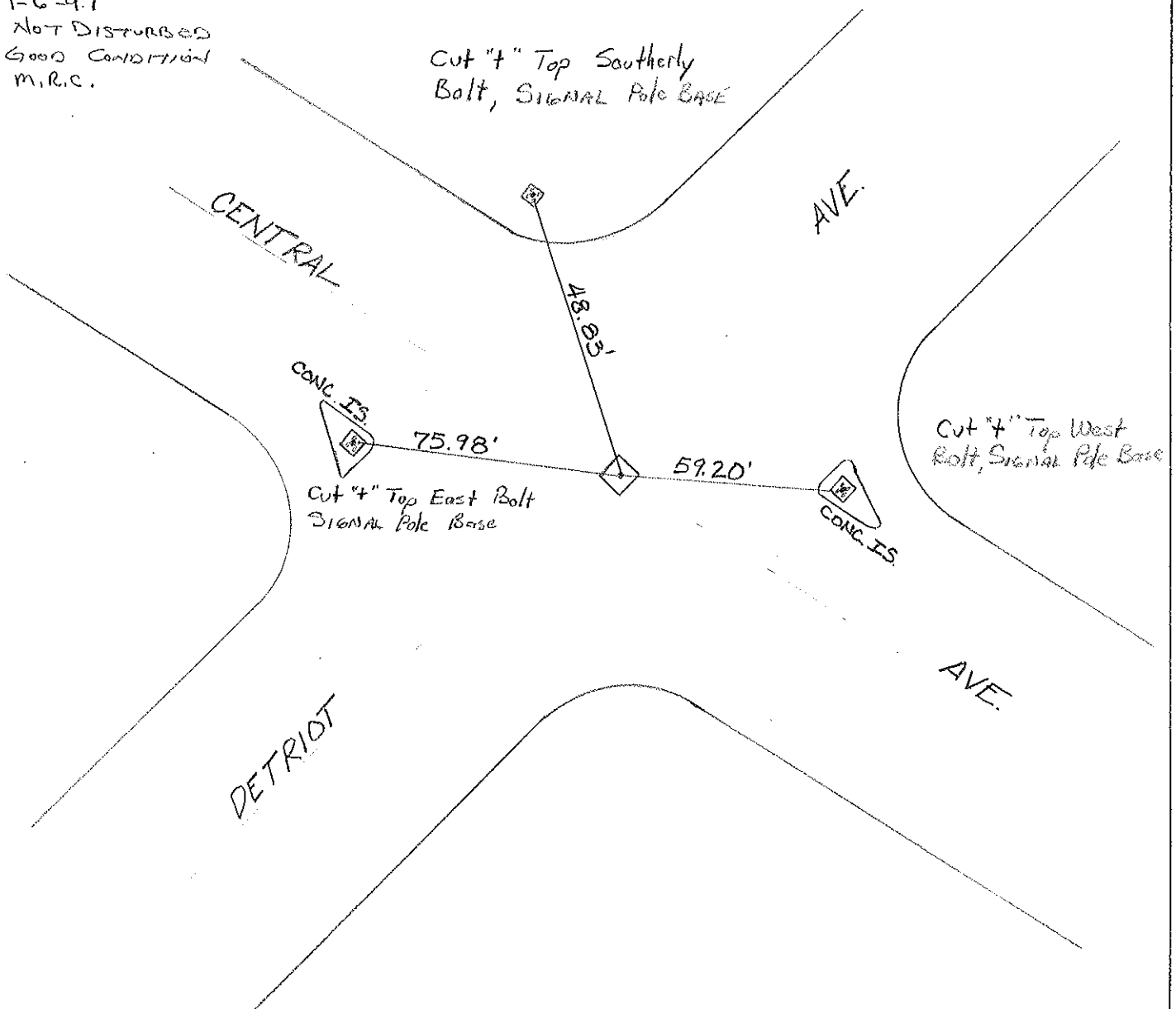
ON SURFACE - ~~BELOW~~ LID TO SURFACE
800' 10" BELOW

LEFT - C. PAV'T. - RIGHT 3' RT. C. OF DETROIT AVE,
TO EDGE PAVEMENT

S.L.M. PROJECT 0+00 / SLM - 26.70



1-6-97
 NOT DISTURBED
 GOOD CONDITION
 M.R.C.



Resurfaeed 1994

O.D.O.T. DISTRICT 2 SURVEY OFFICE

PERSONNEL

REFERENCE NO. 80

SHEET 1 OF 6

NOTES CITY

H.C. OF

R.C. TOLEDO

DATE 1-15-92

WEATHER _____

TEMP. _____

ROUTE 24

COUNTY LUCA S

TOWNSHIP _____

SECTION _____

T. _____ R. _____

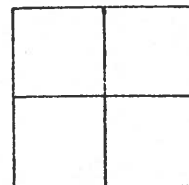
TYPE MONUMENT WOOD

ON SURFACE - BELOW SURFACE

LEFT - & PAV'T. - RIGHT _____

_____ TO _____ EDGE PAVEMENT

S.L.M. 1409+76



TOLEDO PLAN Luc-24-2670

DRAWN BY Wm Lugo

RAN STA = 0.00

