

O.D.O.T. DISTRICT 2 SURVEY OFFICE

PERSONNEL _____

REFERENCE NO. 84

SHEET 5 OF 6

NOTES CITY

H.C. OF

R.C. TOLEDO

DATE 1-7-97

WEATHER _____

TEMP. _____

ROUTE S.R. 24

COUNTY LUCAS

TOWNSHIP _____

SECTION _____

T _____ R _____

TYPE MONUMENT Mon. Box

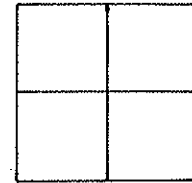
ON SURFACE - BELOW SURFACE

LEFT-☉ PAV'T. - RIGHT 2.8 RT

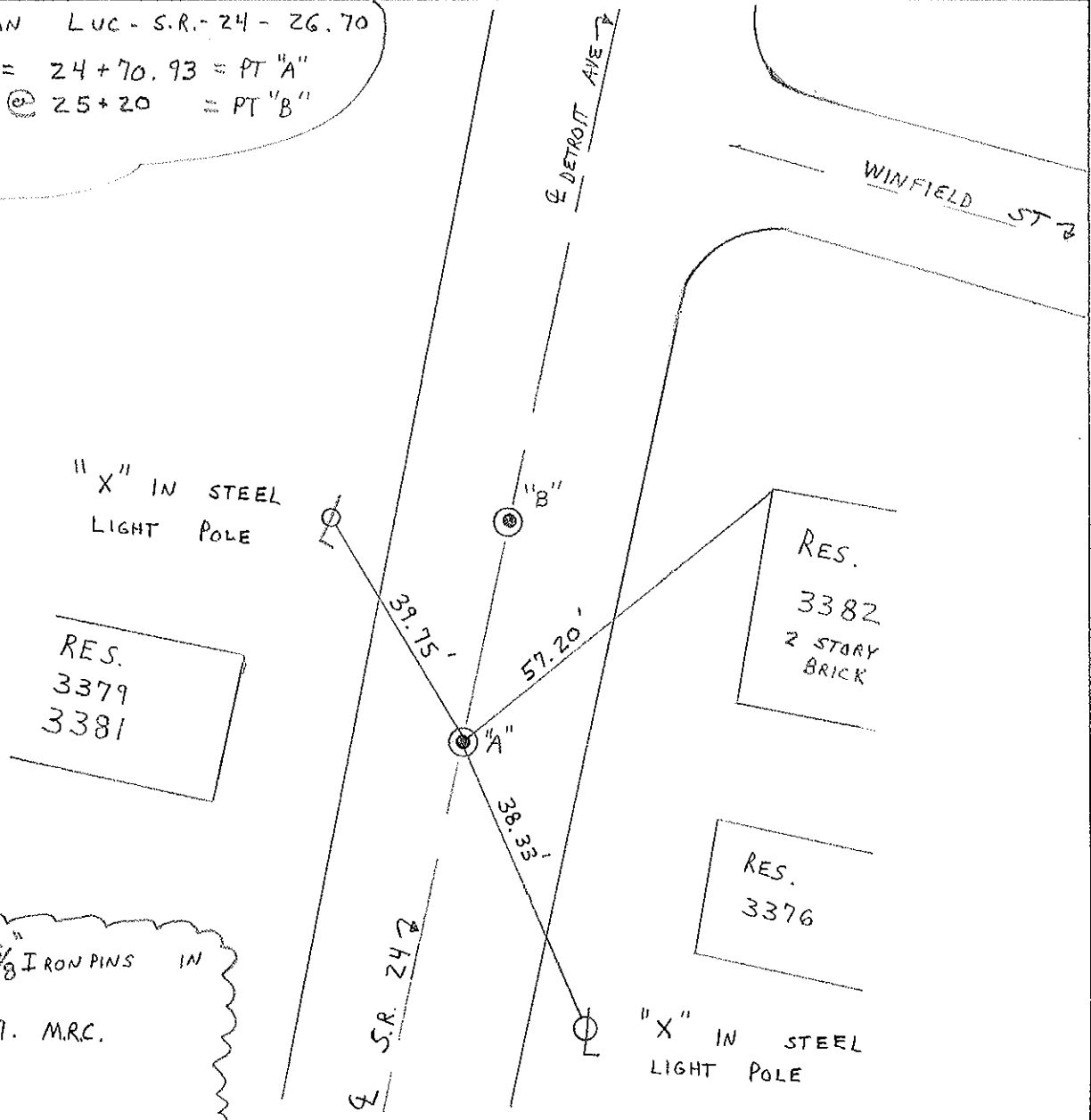
23.1 TO RT EDGE PAVEMENT

S.L.M. 1434+46.93

SLM - 27.15



TOLEDO PLAN LUC - S.R. - 24 - 26.70
 PLAN STA = 24+70.93 = PT "A"
 P.I. @ 25+20 = PT "B"



NOTE: SET $\frac{5}{8}$ " IRON PINS IN BOTH BOXES.
 1-6-97. M.R.C.

O.D.O.T. DISTRICT 2 SURVEY OFFICE

PERSONNEL _____

REFERENCE NO. 84

SHEET 5 OF 6

NOTES CITY

H.C. OF

R.C. TOLEDO

DATE 1-15-92

WEATHER _____

TEMP. _____

ROUTE 24

COUNTY LUCAS

TOWNSHIP _____

SECTION _____

T. _____ R. _____

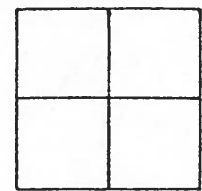
TYPE MONUMENT BRASS PLUG

ON SURFACE - ~~BELOW~~ Yes

LEFT- & PAV'T. - RIGHT 2.8 Rt

23.1 TO Rt EDGE PAVEMENT

S.L.M. 1434+46.93



TOLEDO PLAN LUC-5R-24-26,70

DRAWN BY Wm Luce

PLAN STA 24+70.93

1-6-97
Set 5/8" IRON ROD
IN BOTH MONUMENT
BOXES. M.R.C.

