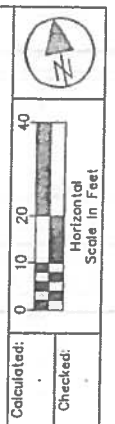
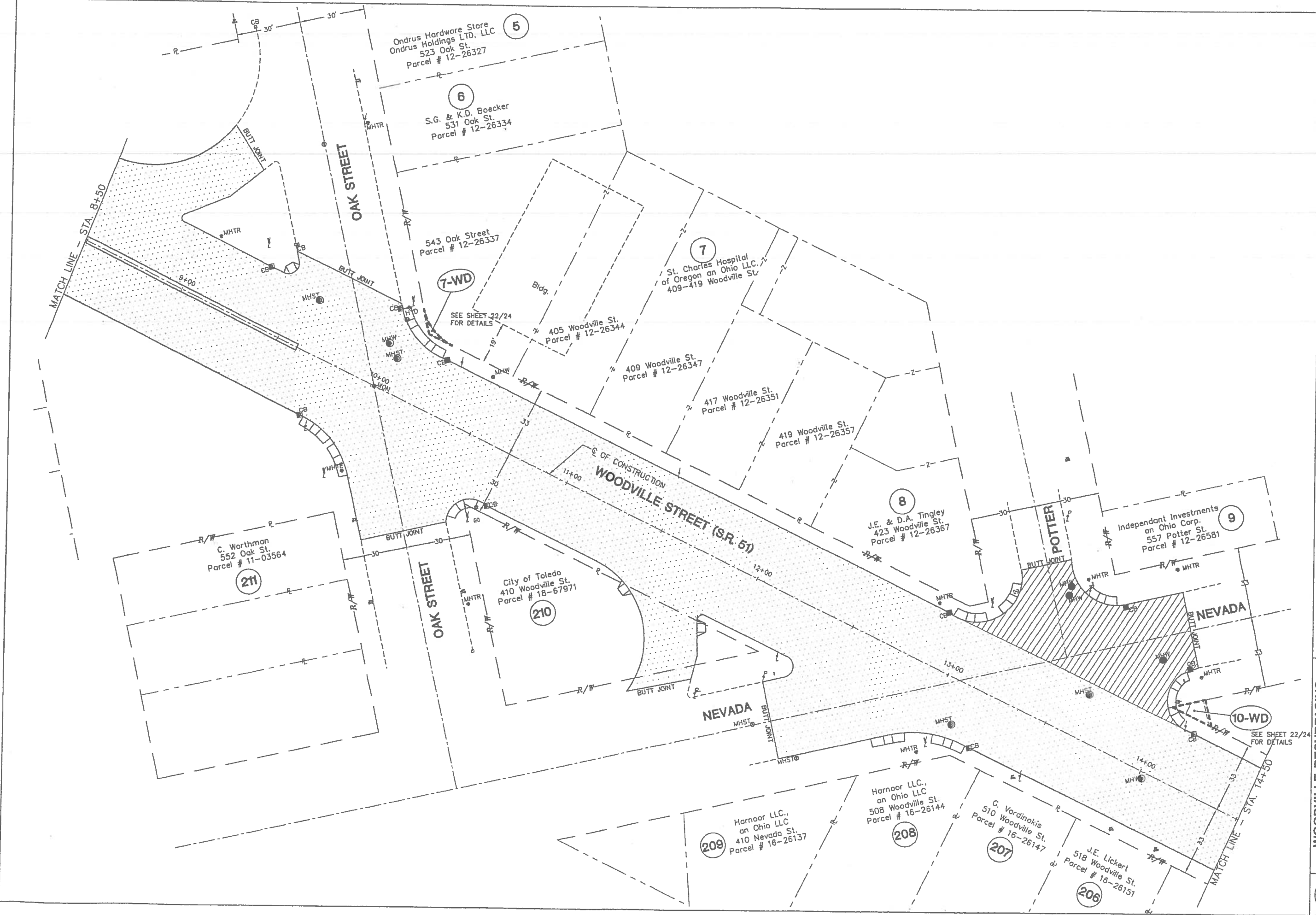


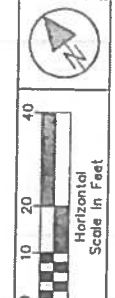
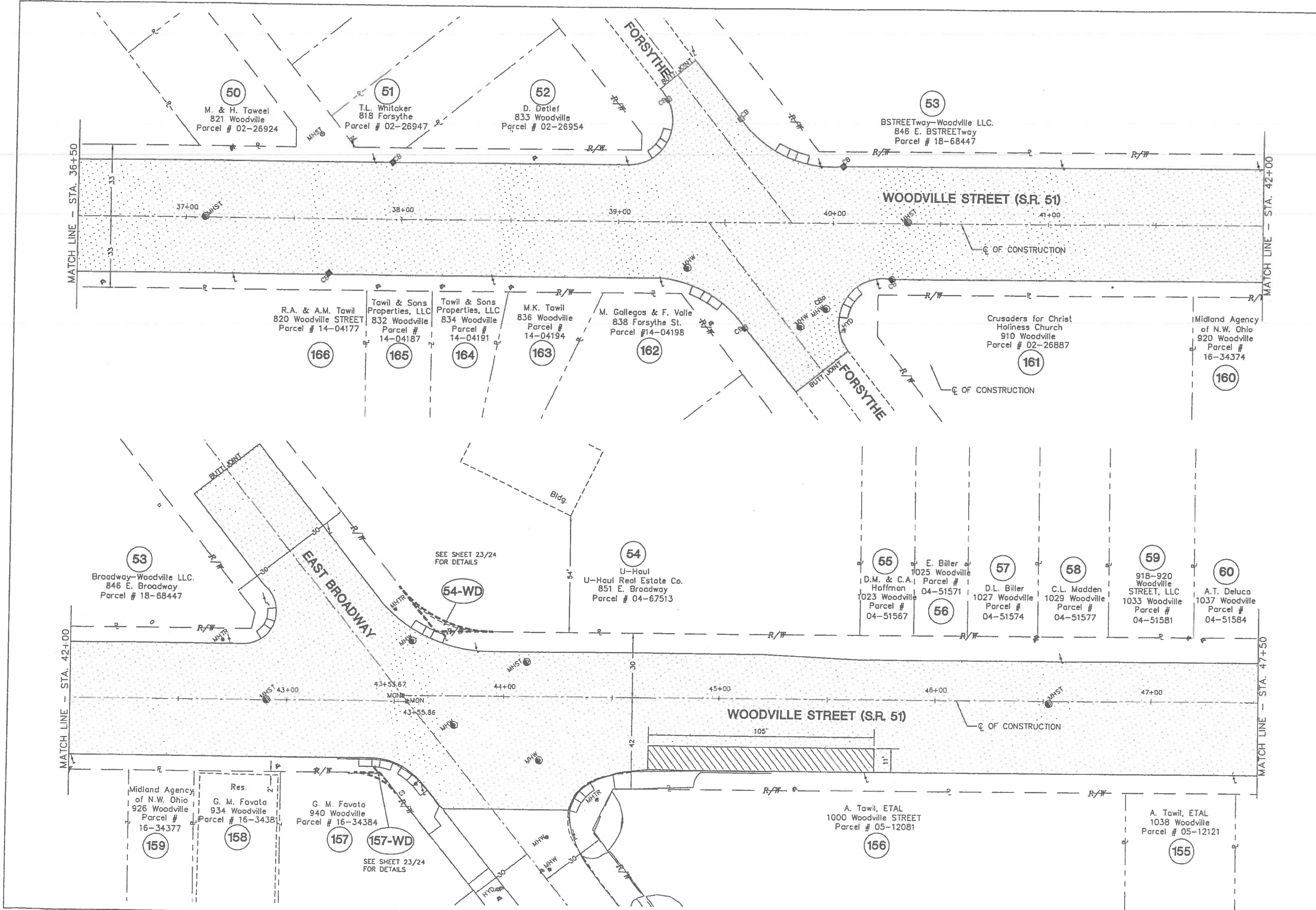
R:\city Projects\2011\1107\dwg\1107-PLANS.dwg, 11/7/2011 2:08:28 PM, kralib



Calculated:
Checked:

**PLAN - WOODVILLE ROAD
STA. 8+50 TO 14+50**

**WOODVILLE RESURFACING
FROM THE HIGH-LEVEL BRIDGE
TO THE TOLEDO CITY LIMITS**

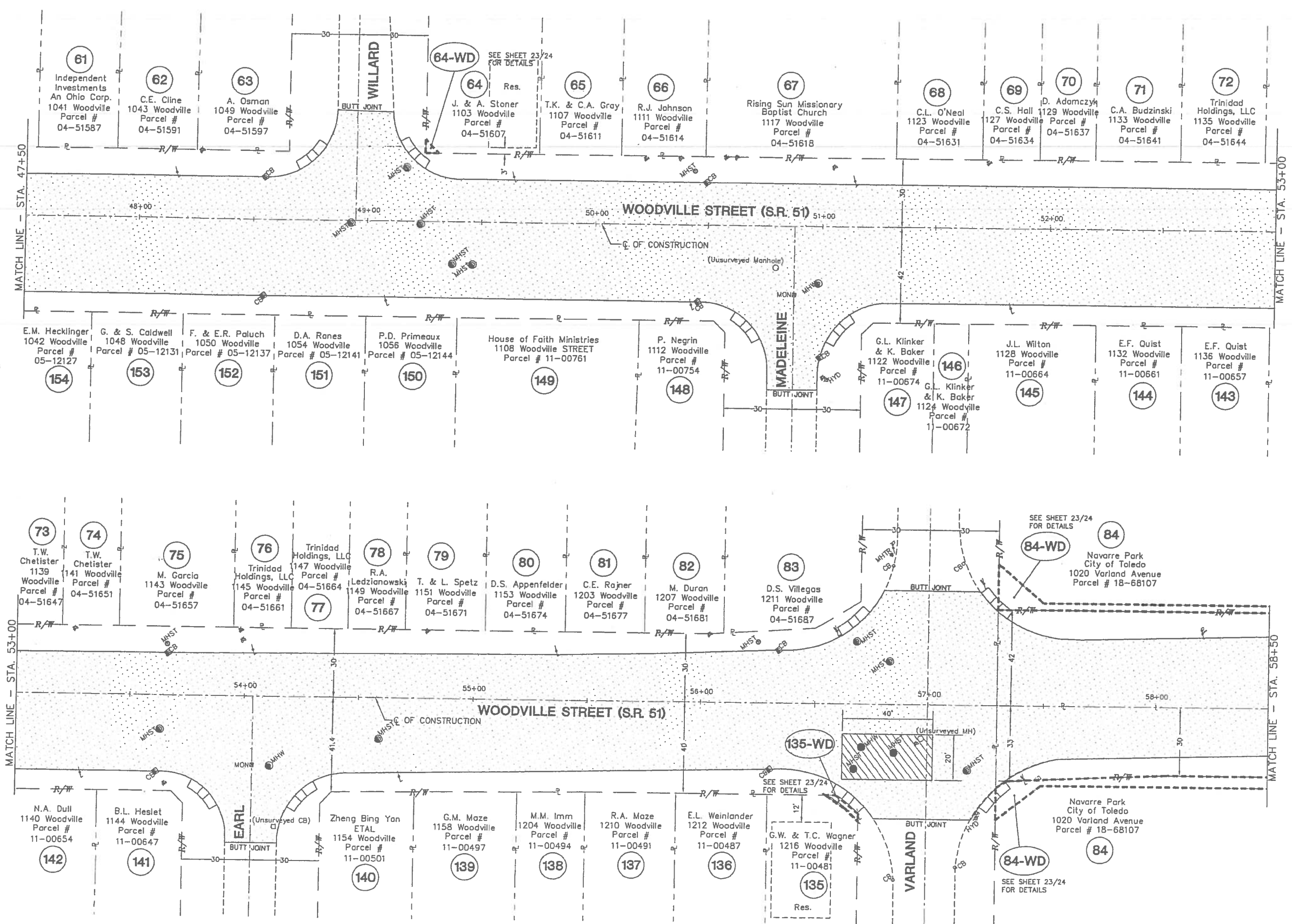



Calculated:
Checked:

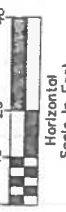
**PLAN - WOODVILLE ROAD
STA 36+50 TO 47+50**

**WOODVILLE RESURFACING
FROM THE HIGH-LEVEL BRIDGE
TO THE TOLEDO CITY LIMITS**

F:\City Projects 2011\11107\dwg\11107-PLANS.dwg, 11/17/2011 2:12:43 PM, kralib







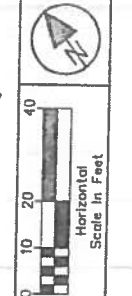
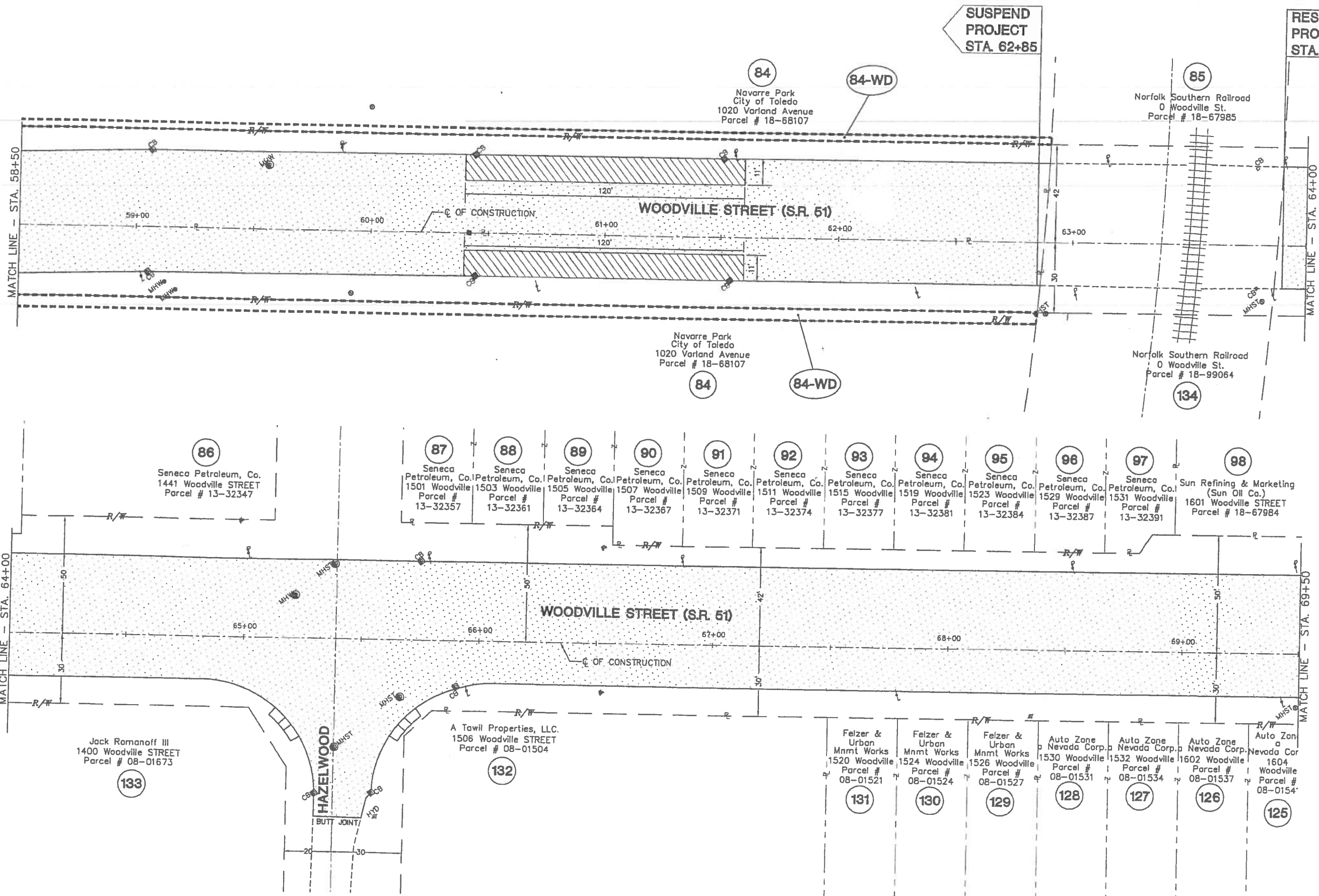
 Horizontal Scale In Feet

Calculated: _____
 Checked: _____

PLAN - WOODVILLE ROAD
STA. 47+50 TO 58+50

WOODVILLE RESURFACING
FROM THE HIGH-LEVEL BRIDGE
TO THE TOLEDO CITY LIMITS

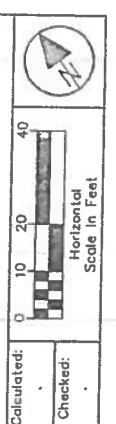
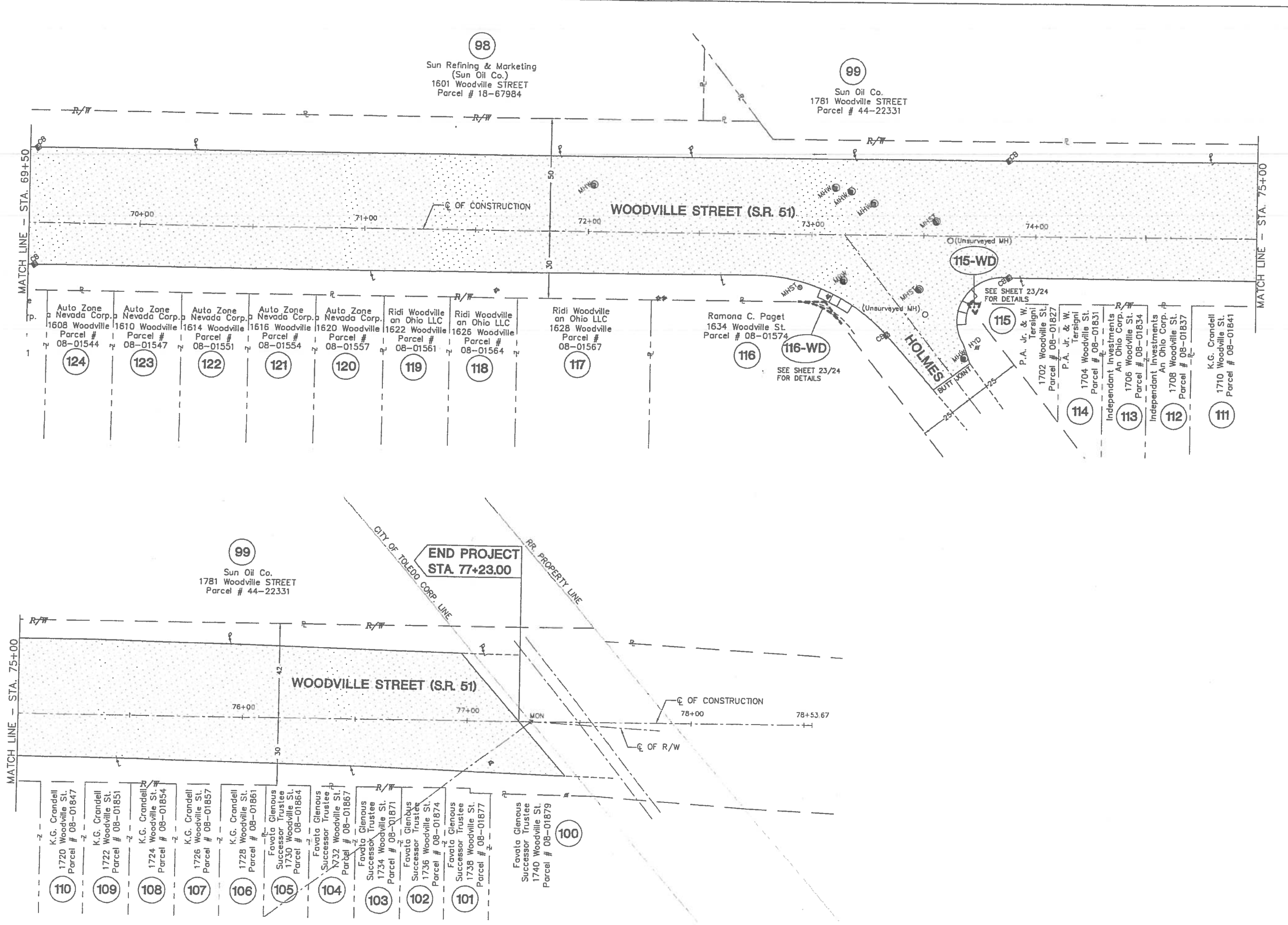
F:\City Projects 2011\11107\dwg\11107-PLANS.dwg, 7/7/2011 8:23:59 AM, kralib



Calculated:
Checked:

PLAN - WOODVILLE ROAD
STA. 58+50 TO 69+50

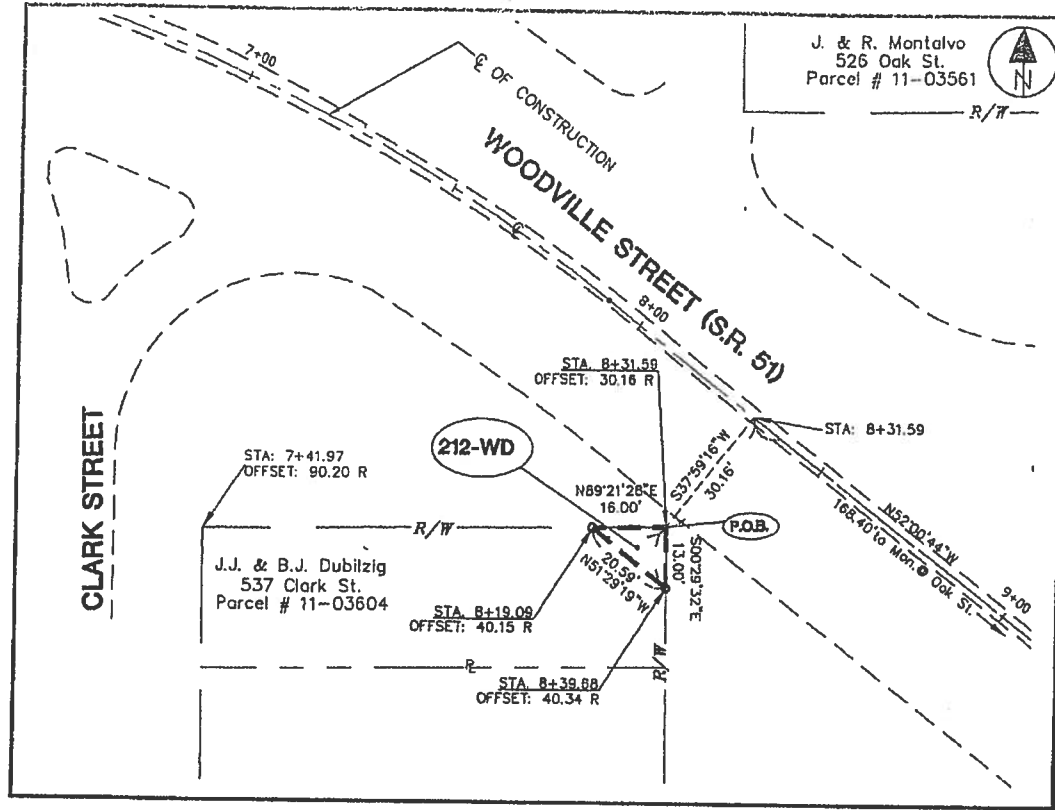
WOODVILLE RESURFACING
FROM THE HIGH-LEVEL BRIDGE
TO THE TOLEDO CITY LIMITS



Calculated:
Checked:

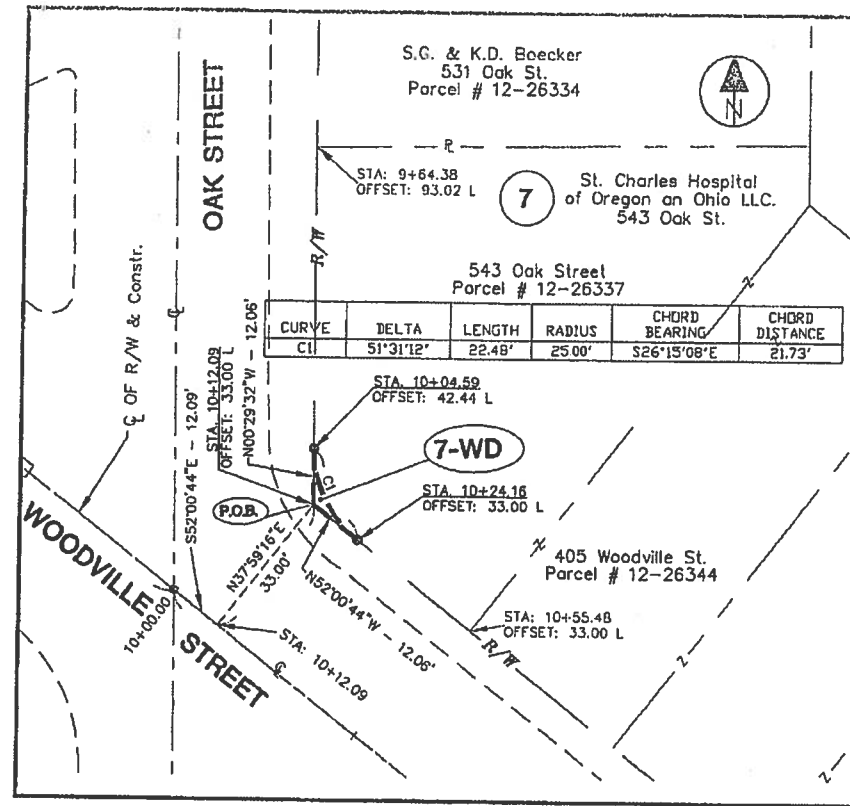
PLAN - WOODVILLE ROAD
STA 69+50 TO 77+00

WOODVILLE RESURFACING
FROM THE HIGH-LEVEL BRIDGE
TO THE TOLEDO CITY LIMITS



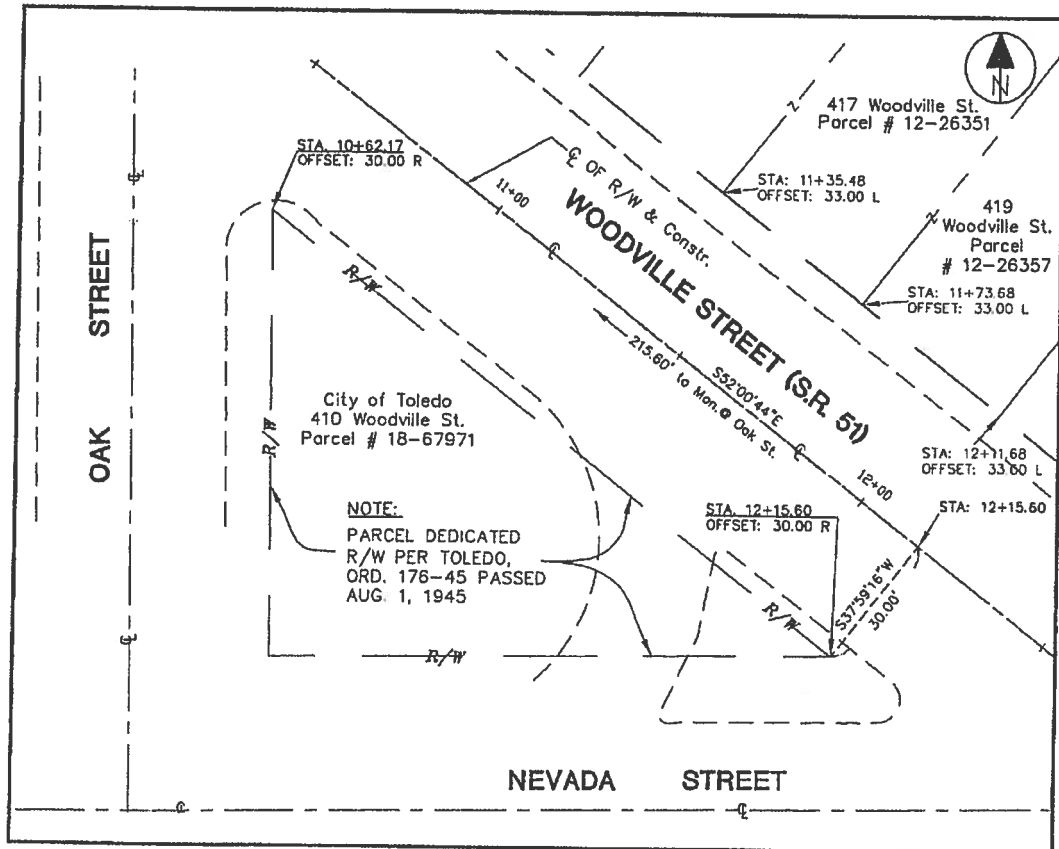
212-WD

See Sheet 10 of 24



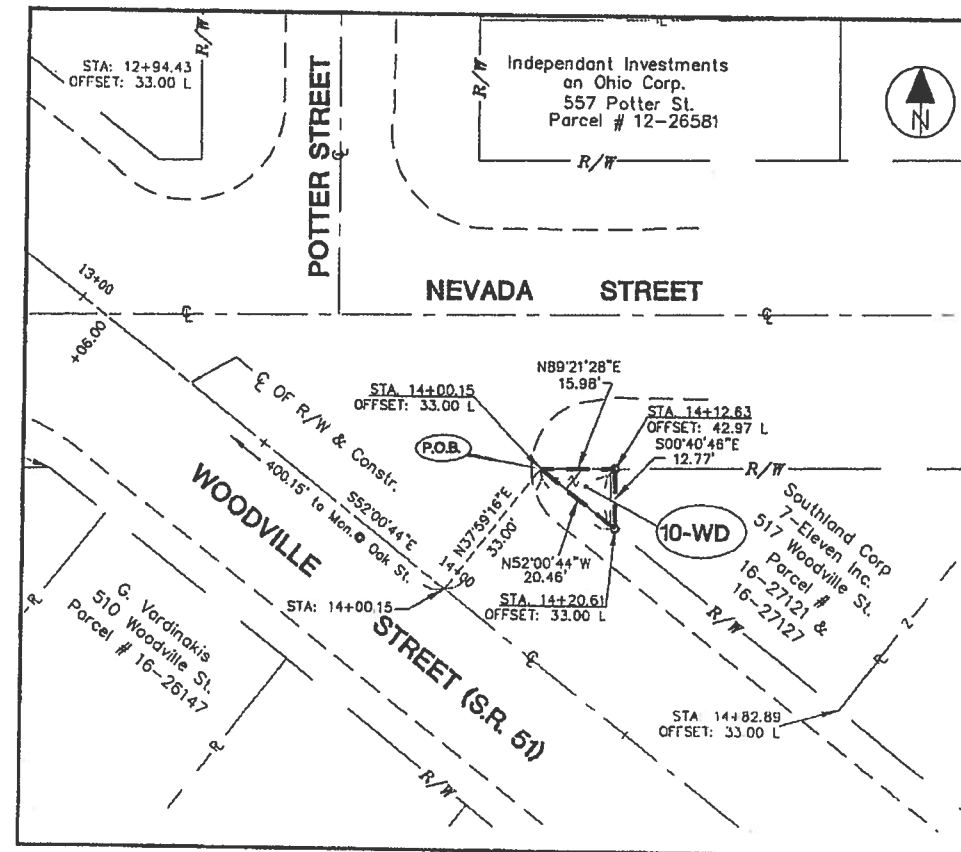
7-WD

See Sheet 11 of 24



210-WD

See Sheet 11 of 24



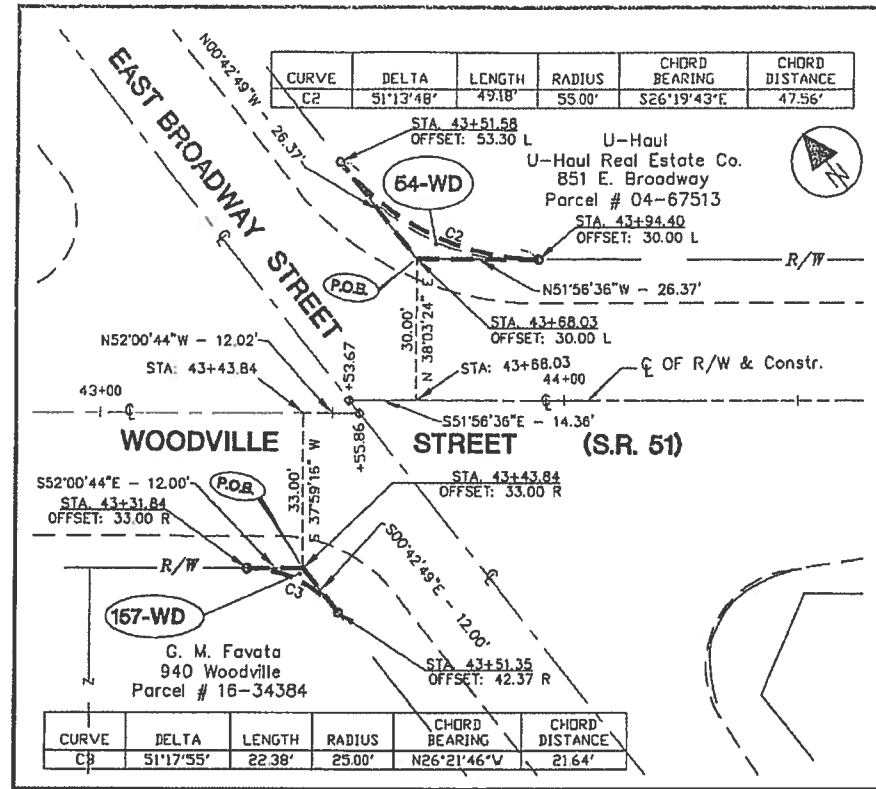
10-WD

See Sheet 11 of 24

- Legend**
- = Iron Rod Found in Monument Box.
 - = Iron Rod SET with Cap
 - P.O.B. = Point of Beginning for Legal Description

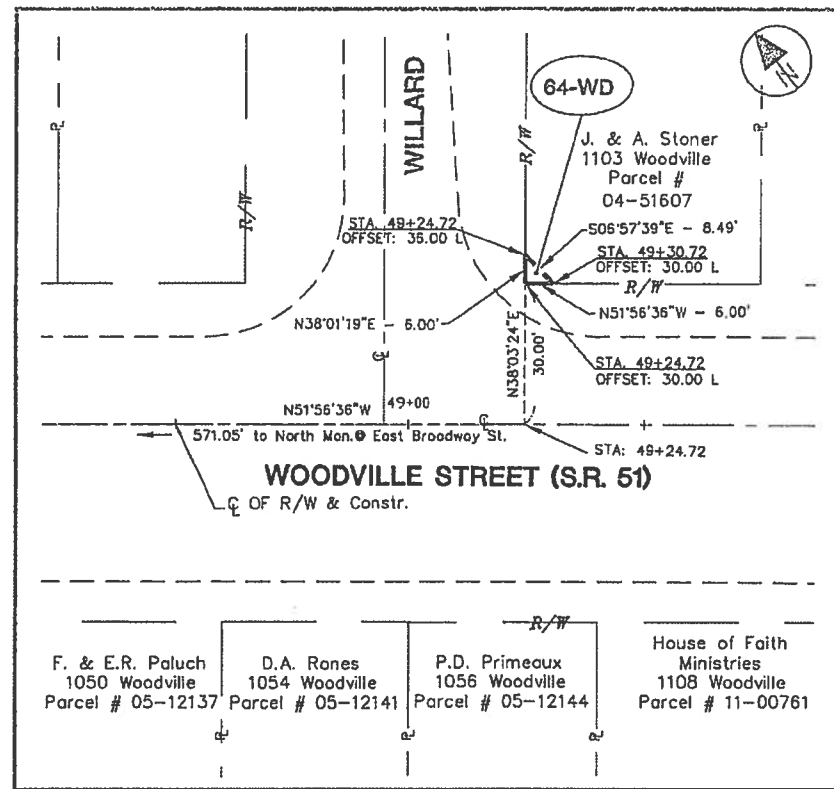
RIGHT OF WAY SHELL

WOODVILLE RESURFACING
FROM THE HIGH-LEVEL BRIDGE
TO THE TOLEDO CITY LIMITS



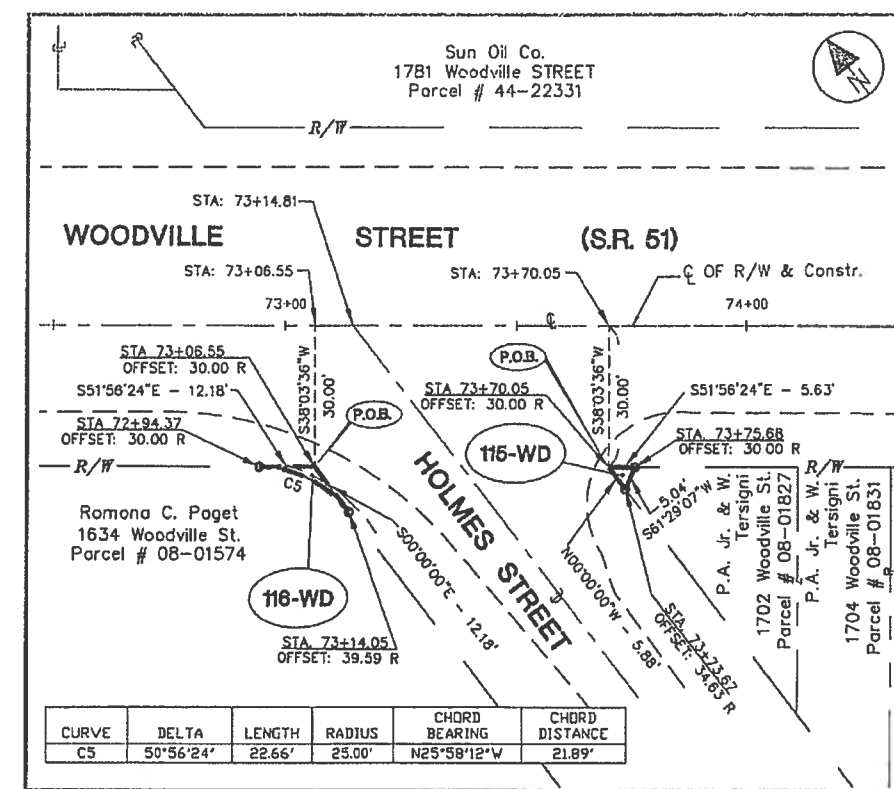
54-WD & 157-WD

See Sheet 14 of 24



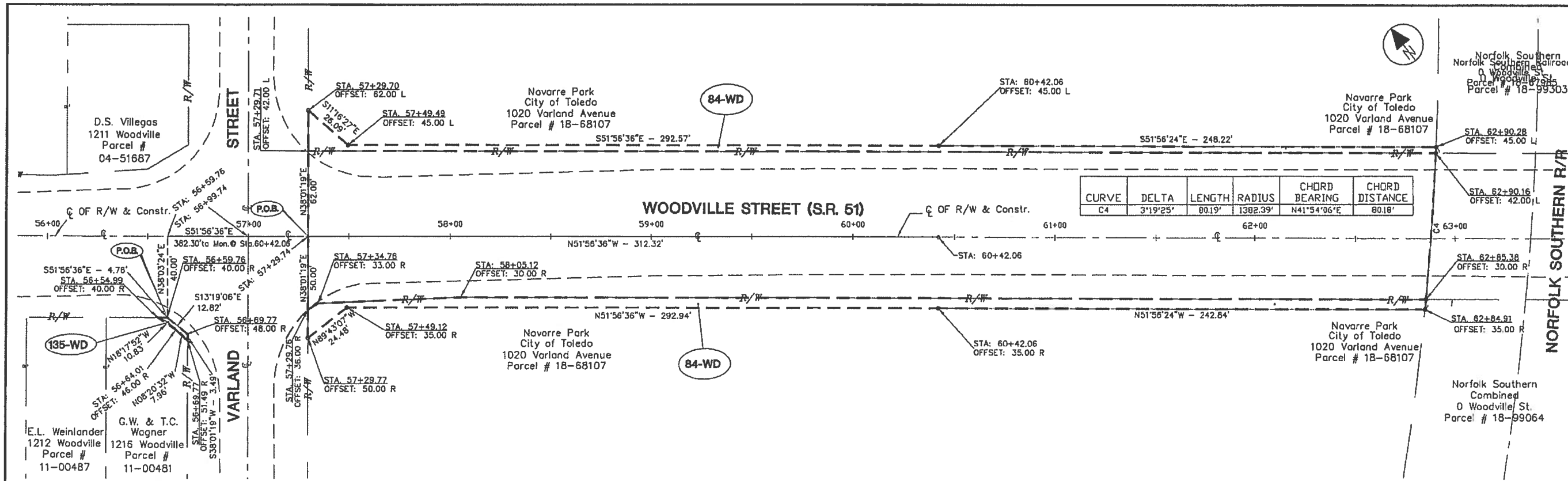
64-WD

See Sheet 15 of 24



115-WD & 116-WD

See Sheet 17 of 24



84-WD & 135-WD

See Sheet 15, 16 of 24

Legend

- = Iron Rod Found in Monument Box.
- = Iron Rod SET with Cap
- P.O.B. = Point of Beginning for Legal Description

RIGHT OF WAY SHELL

WOODVILLE RESURFACING FROM THE HIGH-LEVEL BRIDGE TO THE TOLEDO CITY LIMITS

