

STATE OF OHIO DEPARTMENT OF HIGHWAYS

LUC-223-1.50

CITY OF SYLVANIA LUCAS COUNTY

RENOVATION OF U.S.R. 23 GRADE SEPARATION

FED. RD. DIVISION	STATE	PROJECT	1 11
2	OHIO	State	

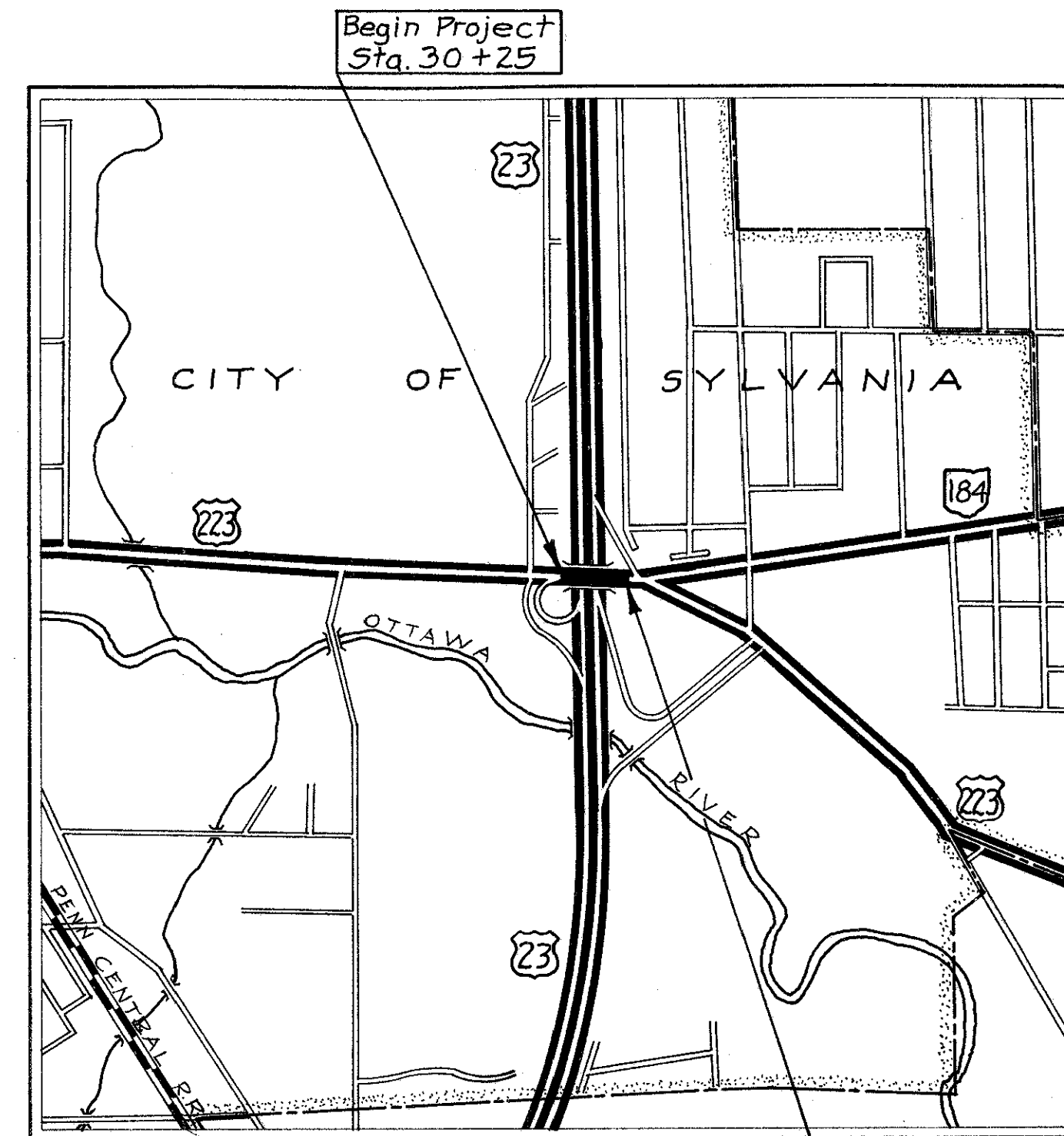
LUC-223-1.50

CONVENTIONAL SIGNS

County Line	-----	Limited Access (only)	-----	LA
Township Line	-----	Right of Way (only)	-----	RW
Section Line	-----	Limited Access & Right of Way	-----	LA&RW
Corporation Line	----- or -----	Existing Right of Way	-----	
Fence Line (existing)	-x-x- (proposed)	Property Line	— — (in existing fence)	-x-x-
Center Line	----- 352 ----- 353 -----	Railroad	-----	
Trees	⊙, Stumps (to be removed)	Guardrail (existing)	—o—o—o— (proposed)	
Utility Poles:	Telephone ⌀, Power ⌀, Light ⌀			

INDEX OF SHEETS

Title Sheet	1
Schematic & Design Designation	2
General Notes & Work Procedure	3
Sub-Summaries & General Summary	4
Plan Sheet & Typical Section	5
Removal Details	6
Replacement Details	7-9
Bearing Details	9
Traffic Control	10-11



LOCATION MAP

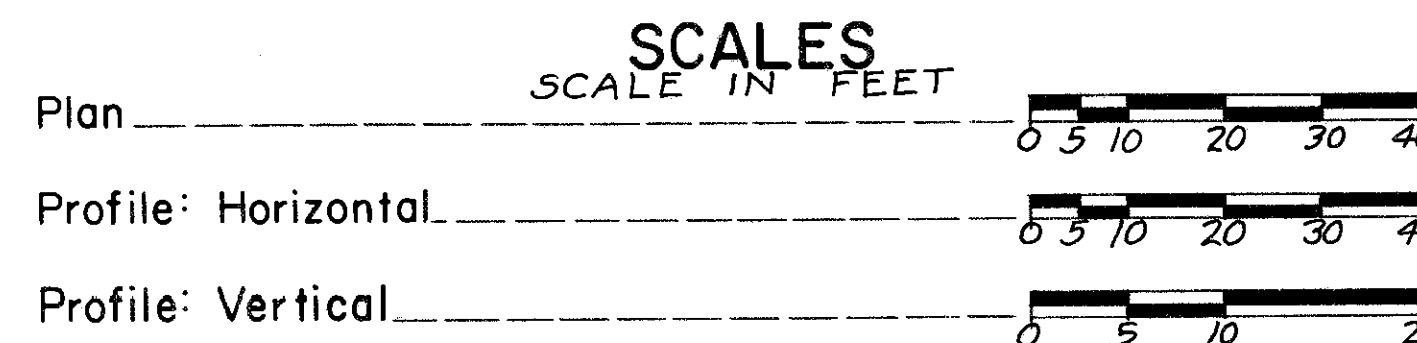


LINE DATA

Begin Project Sta. 30+25.00
 End Project Sta. 34+27.25
 Net Length of Project = 402.25 Lin. Ft. = 0.076 Mi.

Begin Work Sta. 23+00
 End Work Sta. 48+00
 Total Work = 2500 Lin. Ft. = 0.473 Mi.

Portion to be improved	=====
State Roads	=====
Other Roads	-----



1971 SPECIFICATIONS

The standard specifications of the State of Ohio, Department of Highways, including changes and supplemental specifications listed in the proposal shall govern this improvement.

The right of way for this improvement will be provided by the State of Ohio.

I hereby approve these plans and declare that the making of this improvement will not require the closing to traffic of the highway and that provisions for the maintenance and safety of traffic will be as set forth on the plans and estimates.

Approved: R.H. Rice
 Date: 7-22-70 Division Deputy Director

Approved: C.H. Altvater
 Date: 9-16-70 Engineer of Bridges

Approved: E.J. Schup
 Date: 7-6-71 Engineer of Location & Design

Approved: H. Krause
 Date: 7-6-71 Deputy Director of Design & Construction

Approved: _____
 Date: _____ Deputy Director of Right of Way

Approved: William Bunkley
 Date: 7-29-71 Deputy Director of Planning & Programming

Approved: _____
 Date: _____ First Assistant Director

Approved: J. Bunkley
 Date: 7-29-71 Director of Highways

SUPPLEMENTAL PRINTS OF STANDARD CONSTRUCTION DRAWINGS	
BP-2	12-1-68
BP-3	1-1-71
BP-4	1-1-71
BP-7	1-1-66
GR-2A	1-1-71
GR-3	1-1-71
F-1	3-10-69
RB-1-55	2-2-59
AR-1-57	2-2-59
AS-1-67	6-12-69
MC-3	6-20-69
MC-6	6-1-65

SUPPLEMENTAL SPECIFICATIONS	
1001	1-1-69

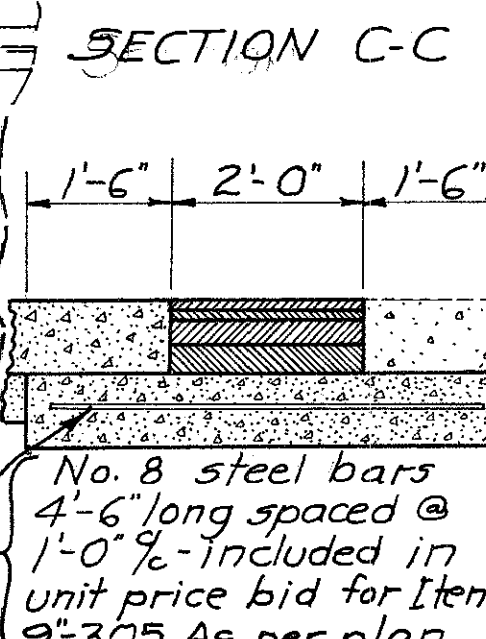
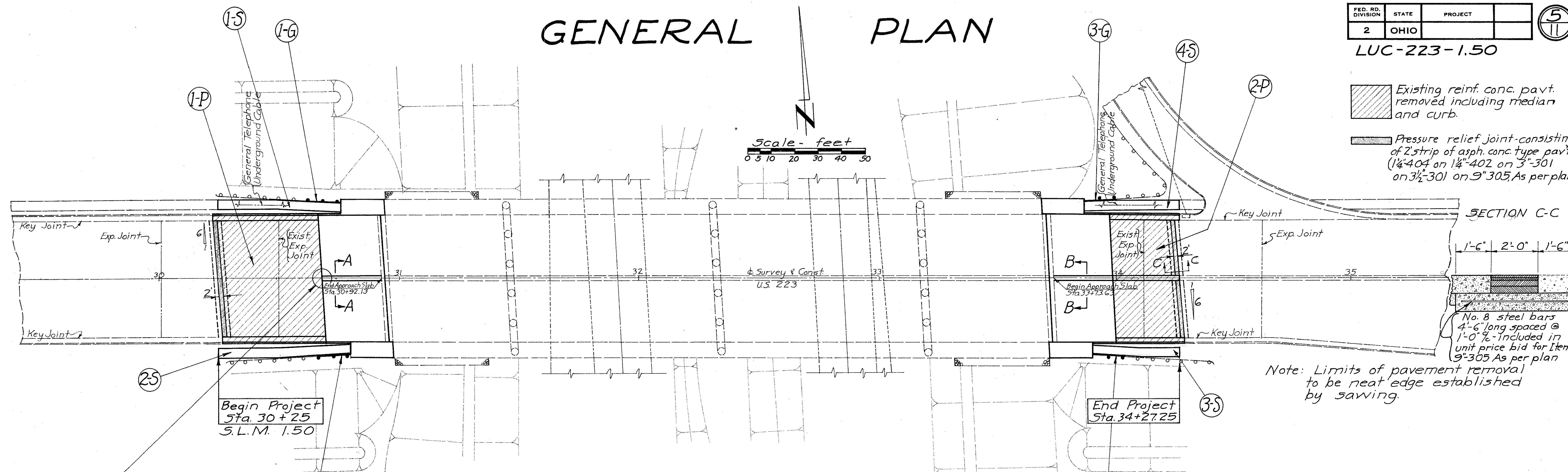
GENERAL PLAN

FED. RD. DIVISION	STATE	PROJECT	5 11
2	OHIO		

LUC-223-1.50

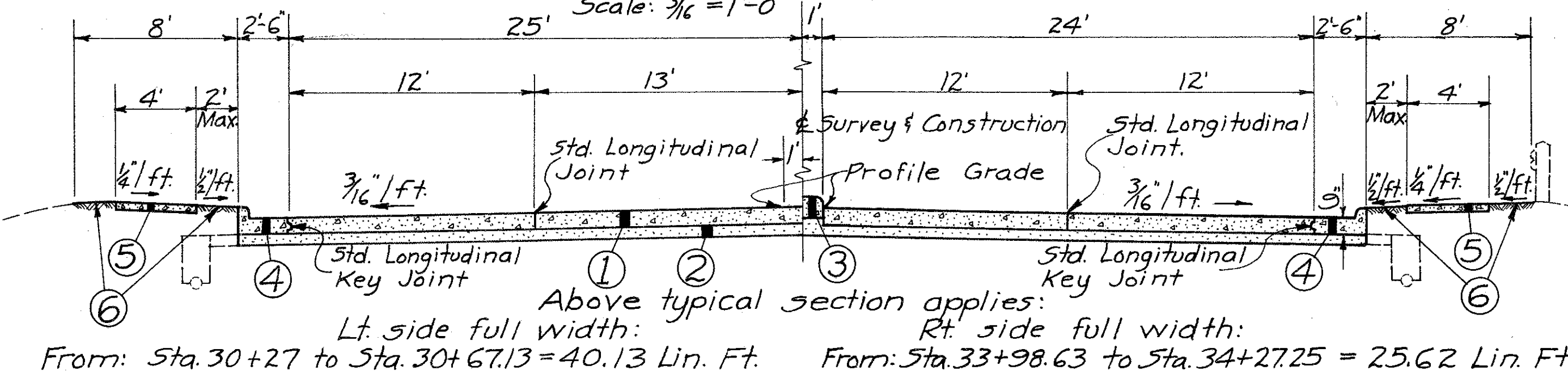
Existing reinf. conc. pavt. removed including median and curb.

Pressure relief joint-consisting of 2' strip of asph. conc. type pavt. (1 1/4"-404 on 1 1/4"-402 on 3"-301 on 3 1/2"-301 on 9"-305, As per plan)



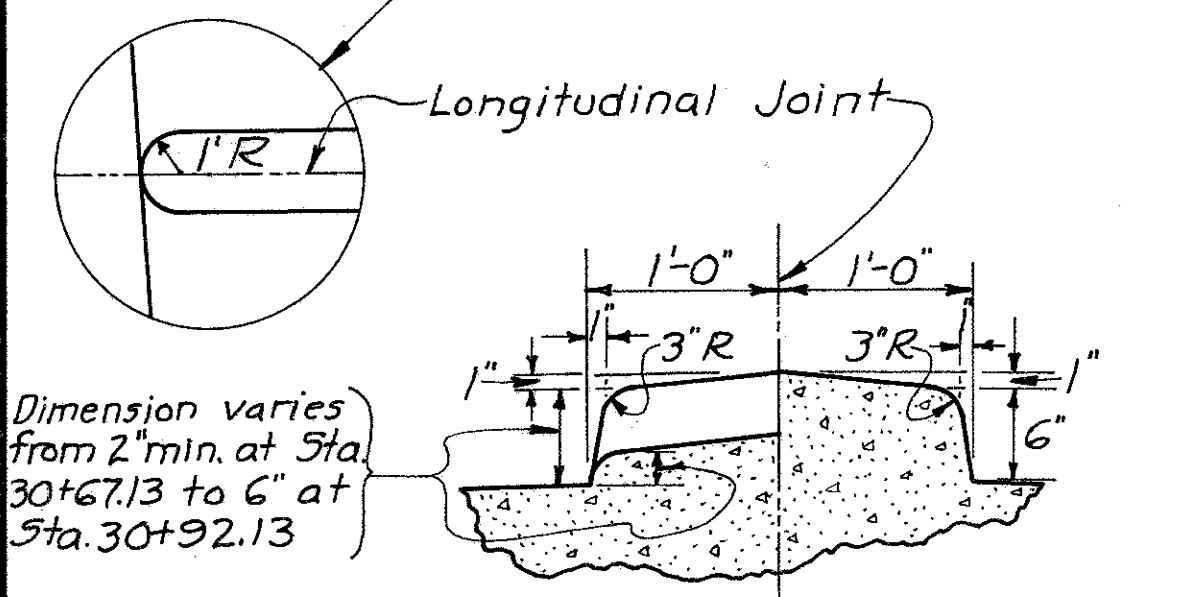
Note: Limits of pavement removal to be neat edge established by sawing.

PAVEMENT CONSTRUCTION DETAIL



- Above typical section applies:
 Lt. side full width: From: Sta. 30+27 to Sta. 30+67.13 = 40.13 Lin. Ft.
 Rt. side full width: From: Sta. 33+98.63 to Sta. 34+27.25 = 25.62 Lin. Ft.
- ① Item 451, 9" Portland cement concrete pavement
 - ② Item 310, 6" Subbase
 - ③ Item 612, Concrete median, as per plan
 - ④ Item 609, Combination curb and gutter, standard Type 2
 - ⑤ Item 608, 4" Concrete walk
 - ⑥ Item 659, Seeding and mulching

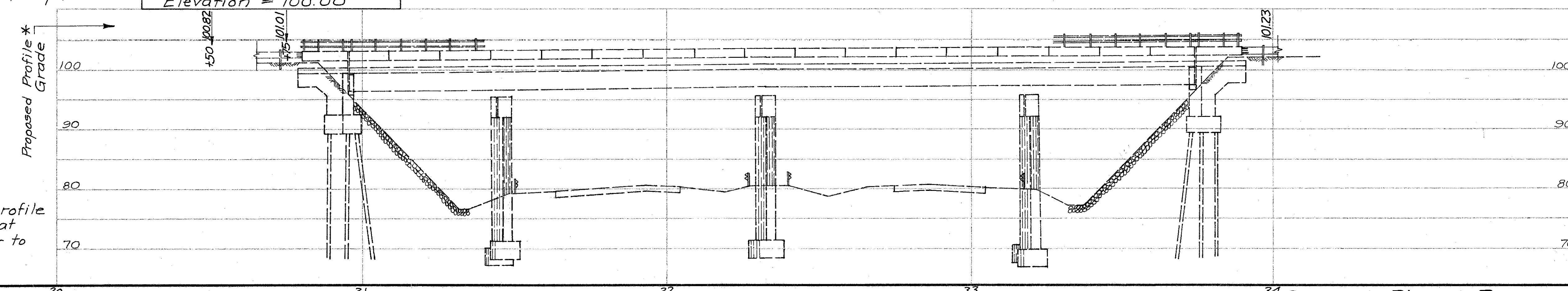
EXISTING STRUCTURE DATA
 Type: Continuous steel beam with reinf. conc. deck. Reinf. conc. pier bents and stub abuts.
 Spans: 52', 86'-6", 86'-6", 52' c/c Brgs.
 Roadway: 54'-0" fl of 5'-0" sidewalks including 2'-0" raised median
 Load Frequency: CF = 400
 Skew: 3°-10'-30" R.F.
 Wearing Surface: 1" Monolithic conc.
 Approach Slabs: A5-1-54 (25' long) with curbs (T=13")
 Alignment: Tangent



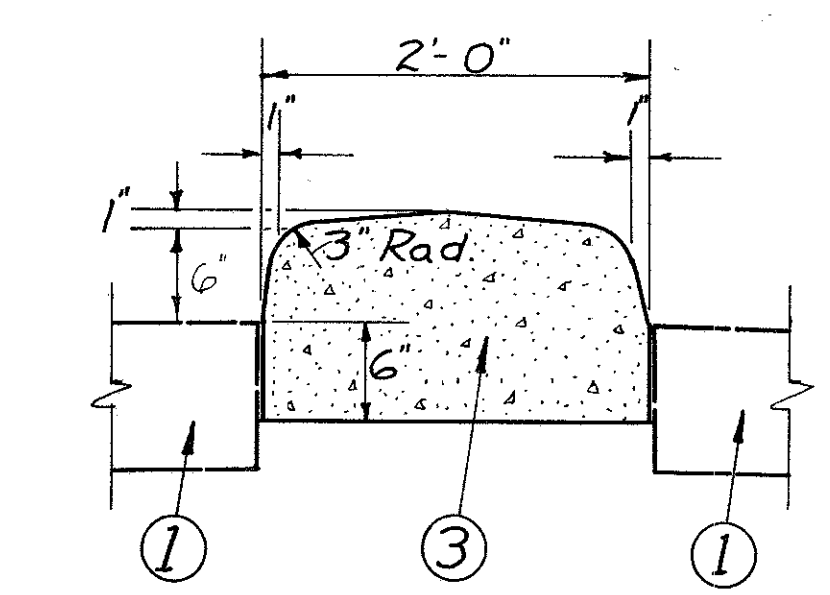
Partial Section A-A
 Partial Section B-B
MONOLITHIC MEDIAN DETAIL ON APPROACH SLAB
 Scale: 1" = 1'-0"

Note: Payment for Monolithic Median on approach slabs shall be included in unit price bid for Item 611 Reinforced concrete approach slab as per plan

B.M. S.E. Corner Conc. Sign Base
 Frisch Big Boy, Lt. Sta. 30 ± 00
 Elevation = 100.00



* For additional profile grade elevations at end dams, refer to Sh. No. 9



ITEM 612, CONCRETE MEDIAN, AS PER PLAN
 Scale: 1" = 1'-0"

BRUNING 44-560 10943