

O.D.O.T. DISTRICT 2 SURVEY OFFICE (USE ONLY)

PERSONNEL _____

REFERENCE NO. 1

SHEET 1 OF 8

NOTES CANTERBURY

DATE 5/5/03

ROUTE SR 51

H.C. BARNHISEL

WEATHER CLOUDY

COUNTY LUCAS

R.C. RYALL
BRUMBAUGH/HUSS

TEMP. 60°

TOWNSHIP OREGON

SECTION 17

DWG BY NIESE PID _____

T 10 S R 8 E

TYPE MONUMENT BRASS MONUMENT

~~ON SURFACE~~ - BELOW 3"

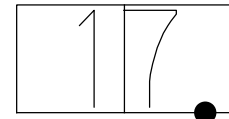
OFFSET \odot PAVEMENT ON LT : RT

28.0' TO LT EDGE PAVEMENT

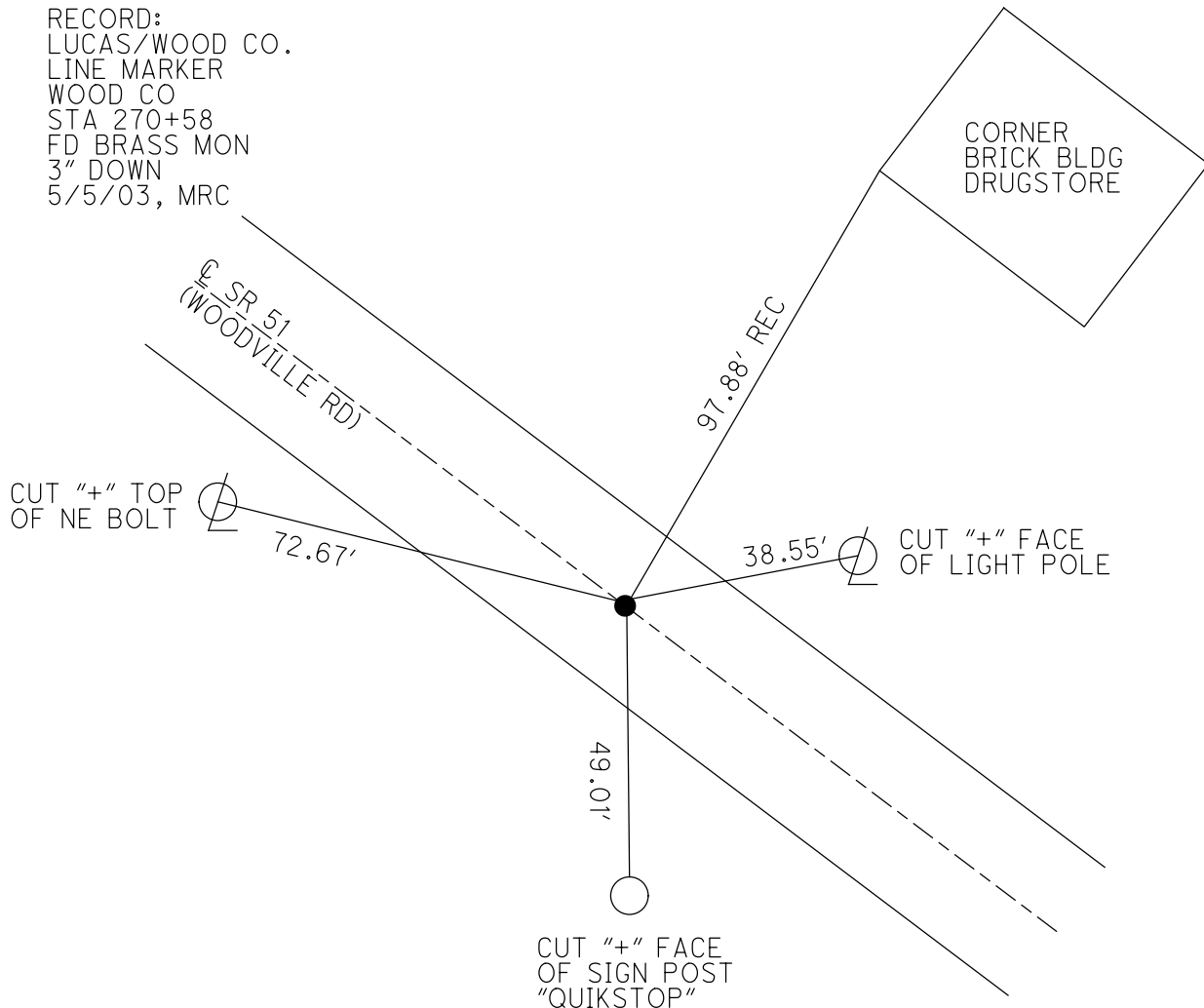
STATION: 0+00

HORZ.DATUM: _____ GEOID: _____

GRID: NORTHING: _____ EASTING: _____



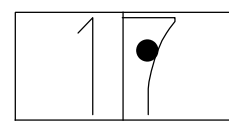
RECORD:
LUCAS/WOOD CO.
LINE MARKER
WOOD CO
STA 270+58
FD BRASS MON
3" DOWN
5/5/03, MRC



O.D.O.T. DISTRICT 2 SURVEY OFFICE (USE ONLY)

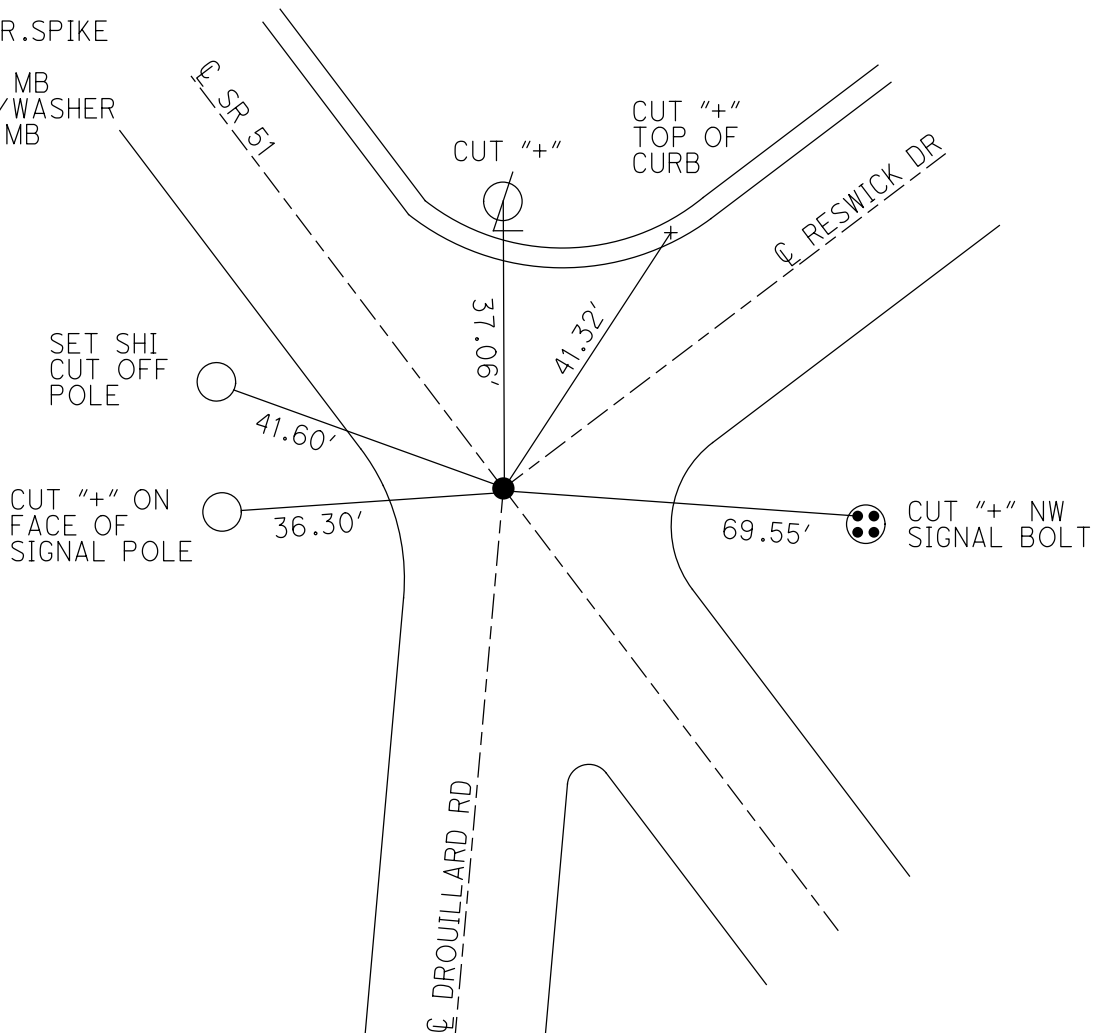
PERSONNEL _____ REFERENCE NO. 2 SHEET 2 OF 8
 NOTES MIKE B. DATE 4/21/03 ROUTE SR 51
 H.C. CUFF WEATHER CLOUDY/FAIR COUNTY LUCAS
 R.C. JON TEMP. 60° TOWNSHIP OREGON
 DWG BY NIESE PID _____ SECTION 17
 T 10 S R 8 E

TYPE MONUMENT SM.R.R.SPIKE
~~ON SURFACE~~ - BELOW 3"
 OFFSET ☉ PAVEMENT ON LT : RT
- TO - EDGE PAVEMENT
 STATION: 14+28



HORZ.DATUM: _____ GEOID: _____
 GRID: NORTHING: _____ EASTING: _____

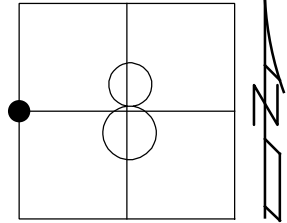
RECORD:
 FD SM.R.R.SPIKE
 3" DOWN
 4/21/03, MB
 SET MAG/WASHER
 5/5/04, MB



O.D.O.T. DISTRICT 2 SURVEY OFFICE (USE ONLY)

PERSONNEL _____ REFERENCE NO. 2 C SHEET 3 OF 8
 NOTES LOEHRKE DATE 10/11/95 ROUTE SR 51
 H.C. ROUSOS WEATHER NICE COUNTY LUCAS
 R.C. CANTERBURY TEMP. 75° TOWNSHIP OREGON
 SECTION 8
 DWG BY NIESE PID _____ T 10 S R 8 E

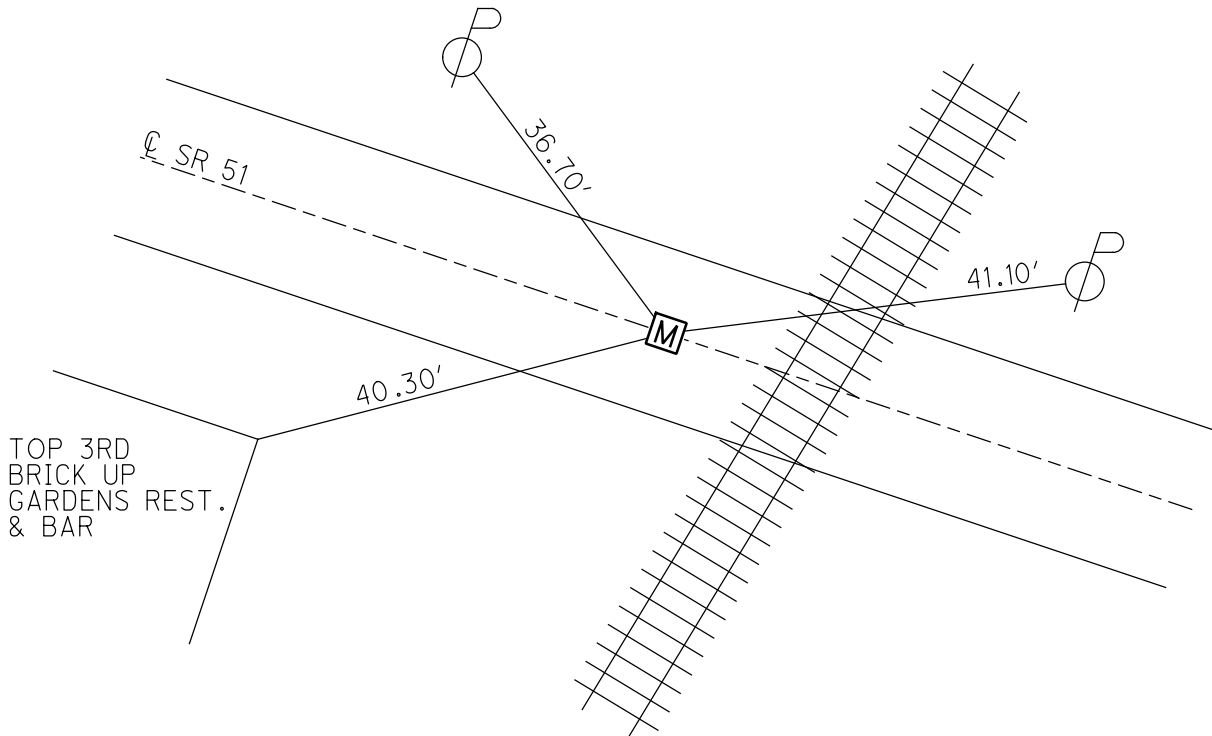
TYPE MONUMENT MONBOX
 ON SURFACE - ~~BELOW~~ ON
 OFFSET \varnothing PAVEMENT 2.0' ~~LT~~ : RT
- TO - EDGE PAVEMENT
 STATION: 59+14



HORZ.DATUM: _____ GEOID: _____
 GRID: NORTHING: _____ EASTING: _____

RECORD:
 FD MONBOX
 10/11/95, CL
 5/21/96, CL

CUT "+"
 STEEL PLATE
 AROUND POLE



O.D.O.T. DISTRICT 2 SURVEY OFFICE (USE ONLY)

PERSONNEL

REFERENCE NO. 2 D

SHEET 4 OF 8

NOTES LOEHRKE

DATE 10/11/95

ROUTE SR 51

H.C. ROUSOS

WEATHER NICE

COUNTY LUCAS

R.C. CANTERBURY

TEMP. 75°

TOWNSHIP CITY OF TOLEDO

SECTION 7

DWG BY NIESE

PID _____

T 10 S R 8 E

TYPE MONUMENT MONBOX

ON SURFACE - ~~BELOW~~ ON

OFFSET CL PAVEMENT 7.4' ~~LT~~ : RT

18.6' TO RT EDGE PAVEMENT

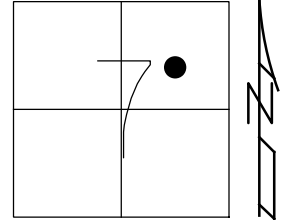
STATION: 75+97

HORZ. DATUM: _____

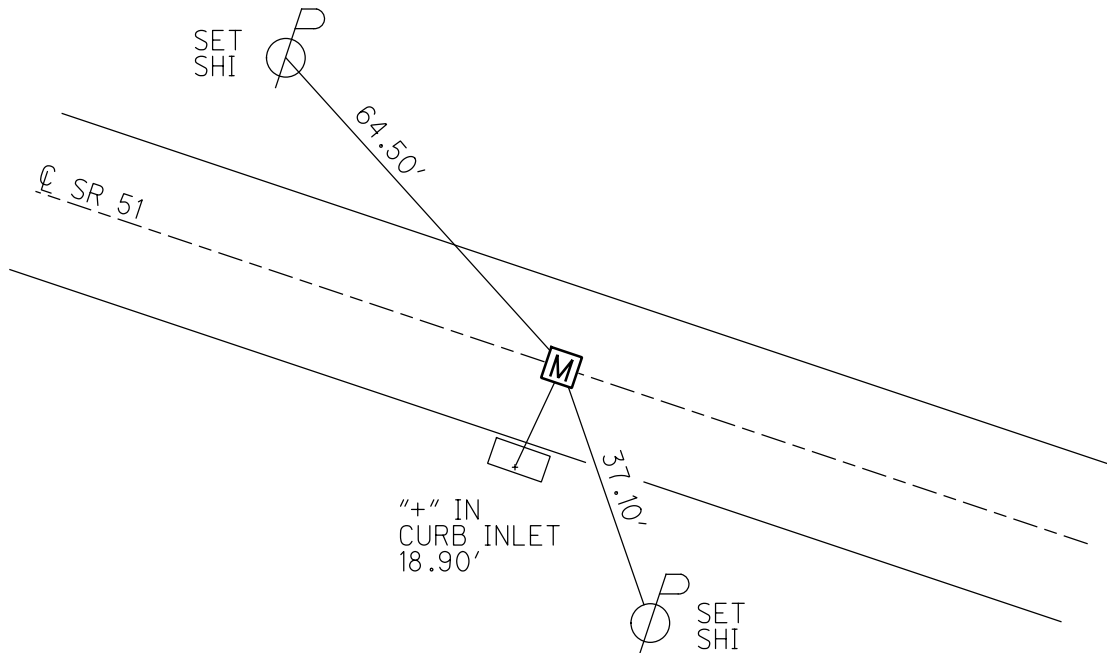
GEOID: _____

GRID: NORTHING: _____

EASTING: _____



RECORD:
FD MONBOX
9" ROUND
10/11/95, CL
5/21/96, CL



O.D.O.T. DISTRICT 2 SURVEY OFFICE (USE ONLY)

PERSONNEL _____

REFERENCE NO. 2 E

SHEET 5 OF 8

NOTES LOEHRKE DATE 10/11/95

ROUTE SR 51

H.C. ROUSOS WEATHER NICE

COUNTY LUCAS

R.C. CANTERBURY TEMP. 75°

TOWNSHIP CITY OF TOLEDO

DWG BY NIESE PID _____

SECTION 7

T 10 S R 8 E

TYPE MONUMENT MONBOX

ON SURFACE - ~~BELOW~~ ON

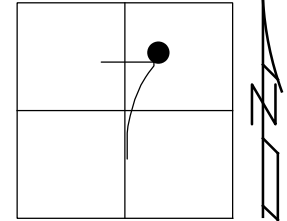
OFFSET CL PAVEMENT 22.5' LT : ~~RT~~

3.4' TO LT EDGE PAVEMENT

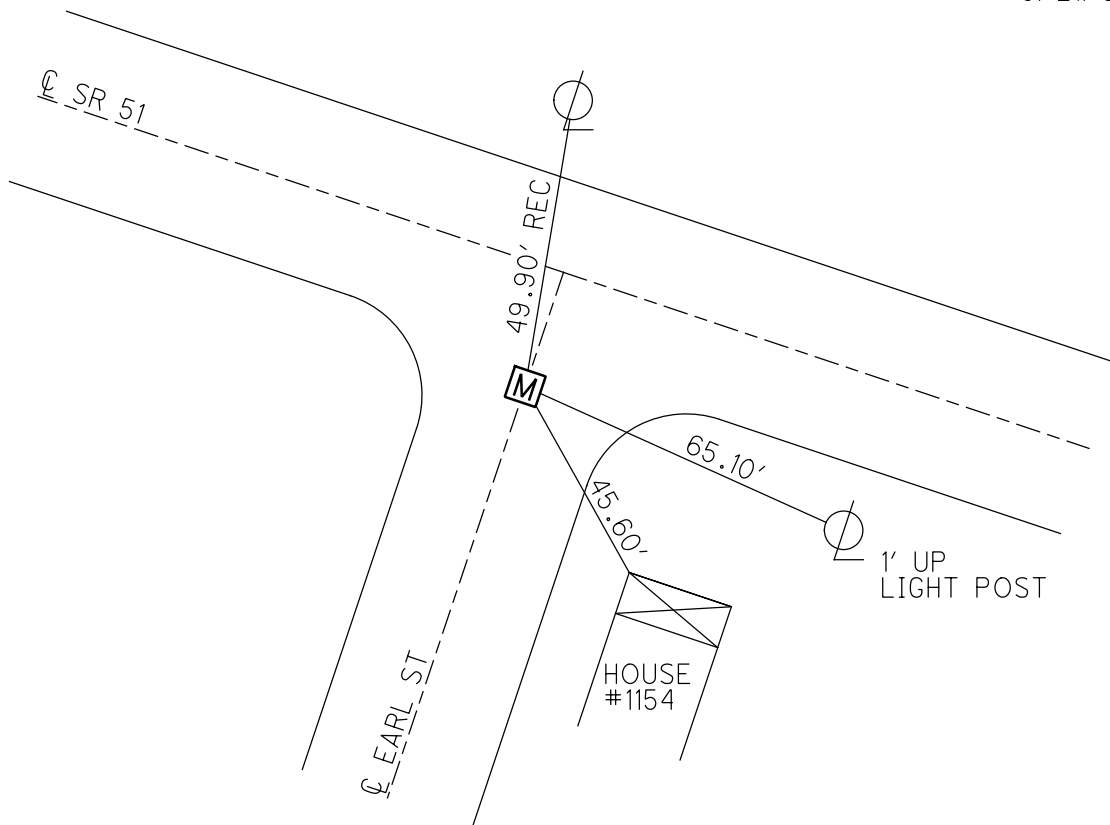
STATION: 82+41

HORZ. DATUM: _____ GEOID: _____

GRID: NORTHING: _____ EASTING: _____



RECORD:
FD MONBOX
9" ROUND
10/11/95, CL
5/21/96, CL



O.D.O.T. DISTRICT 2 SURVEY OFFICE (USE ONLY)

PERSONNEL

REFERENCE NO. 2 F

SHEET 6 OF 8

NOTES LOEHRKE
 H.C. ROUSOS
 R.C. CANTERBURY

DATE 10/11/95
 WEATHER NICE
 TEMP. 75°

ROUTE SR 51
 COUNTY LUCAS
 TOWNSHIP CITY OF TOLEDO
 SECTION 7
 T 10 S R 8 E

DWG BY NIESE PID _____

TYPE MONUMENT MONBOX

ON SURFACE - ~~BELOW~~ ON

OFFSET Q PAVEMENT 22.1' LT : ~~RT~~

3.8' TO LT EDGE PAVEMENT

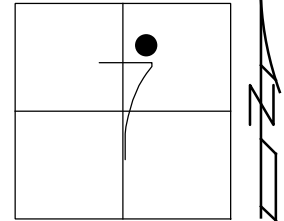
STATION: 85+58

HORZ. DATUM: _____

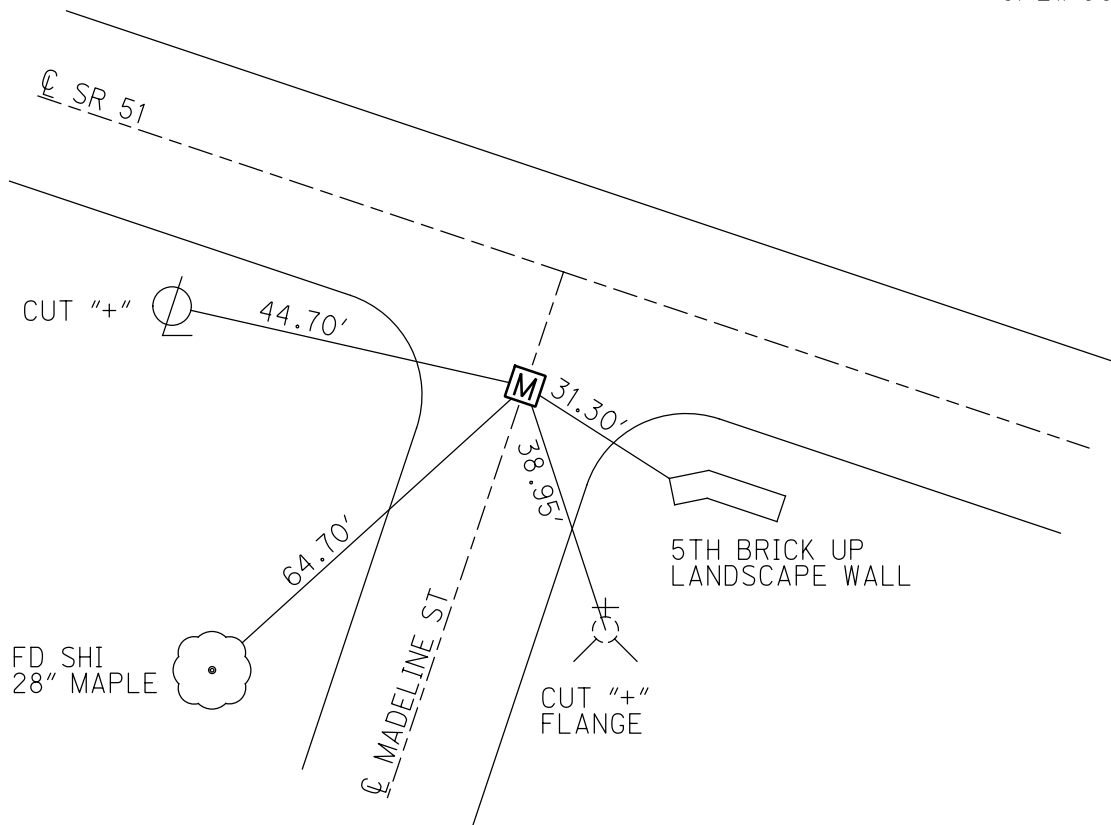
GEOID: _____

GRID: NORTHING: _____

EASTING: _____



RECORD:
 FD MONBOX
 10/11/95, CL
 FD W/ NO LID
 5/21/96, CL



O.D.O.T. DISTRICT 2 SURVEY OFFICE (USE ONLY)

PERSONNEL

REFERENCE NO. 2 G

SHEET 7 OF 8

NOTES LOEHRKE
 H.C. ROUSOS
 R.C. CANTERBURY

DATE 10/11/95
 WEATHER NICE
 TEMP. 75°

ROUTE SR 51
 COUNTY LUCAS
 TOWNSHIP CITY OF TOLEDO
 SECTION 7
 T 10 S R 8 E

DWG BY NIESE PID _____

TYPE MONUMENT MONBOX

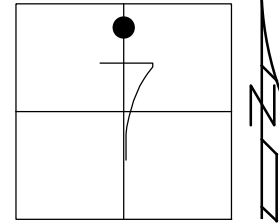
ON SURFACE - ~~BELOW~~ ON

OFFSET CL PAVEMENT ON LT : RT
- TO - EDGE PAVEMENT

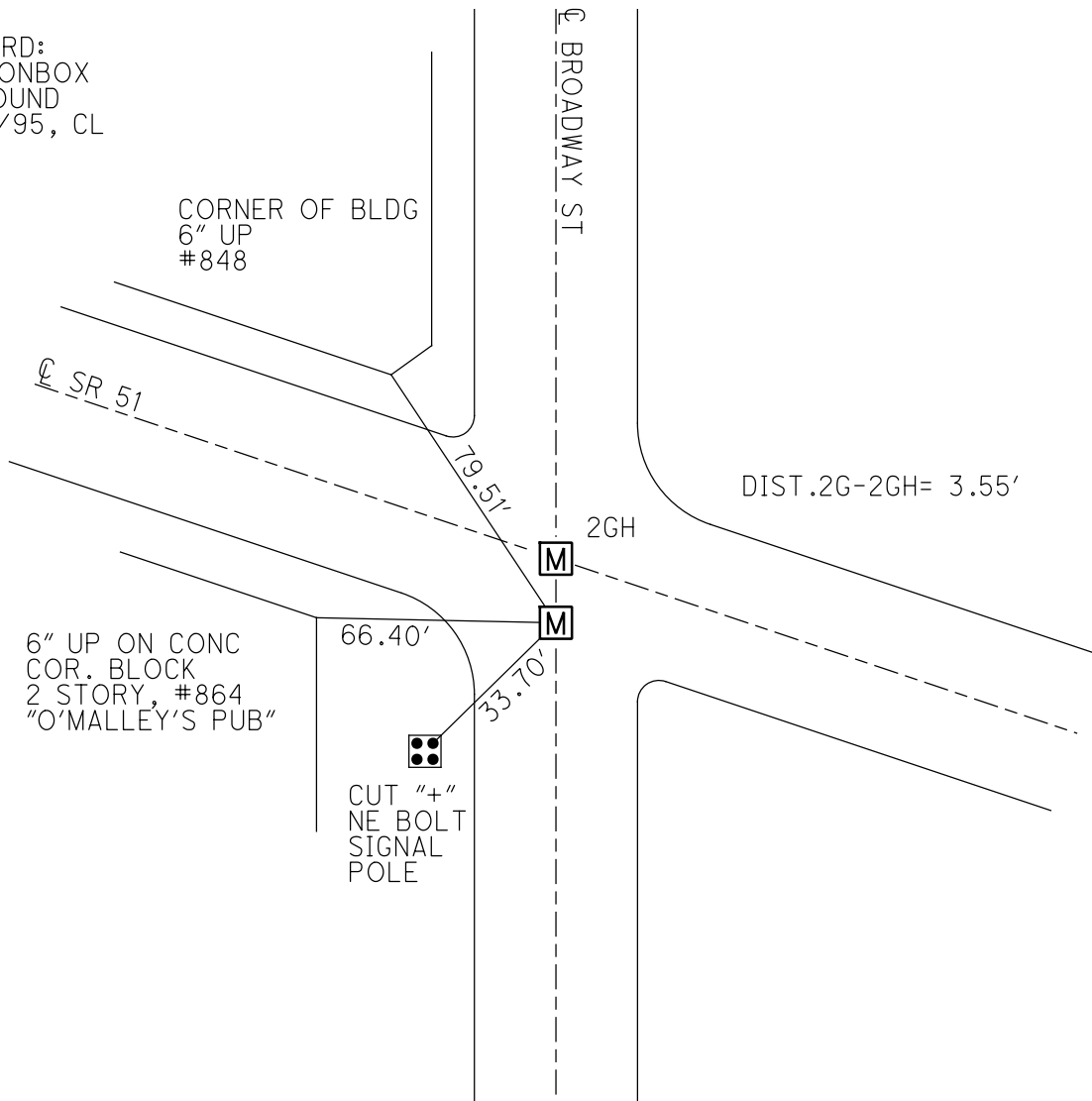
STATION: 93+09

HORIZ.DATUM: _____ GEOID: _____

GRID: NORTHING: _____ EASTING: _____



RECORD:
 FD MONBOX
 9" ROUND
 10/11/95, CL



O.D.O.T. DISTRICT 2 SURVEY OFFICE (USE ONLY)

PERSONNEL _____

REFERENCE NO. 2 GH

SHEET 7 OF 8

NOTES LOEHRKE

DATE 10/11/95

ROUTE SR 51

H.C. ROUSOS

WEATHER NICE

COUNTY LUCAS

R.C. CANTERBURY

TEMP. 75°

TOWNSHIP CITY OF TOLEDO

DWG BY NIESE

PID _____

SECTION 7

T 10 S R 8 E

TYPE MONUMENT MONBOX

ON SURFACE - ~~BELOW~~ ON

OFFSET CL PAVEMENT ON LT : RT

- TO - EDGE PAVEMENT

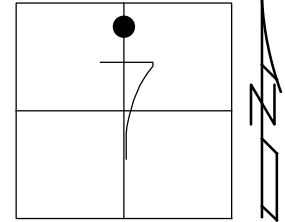
STATION: 93+10

HORZ.DATUM: _____

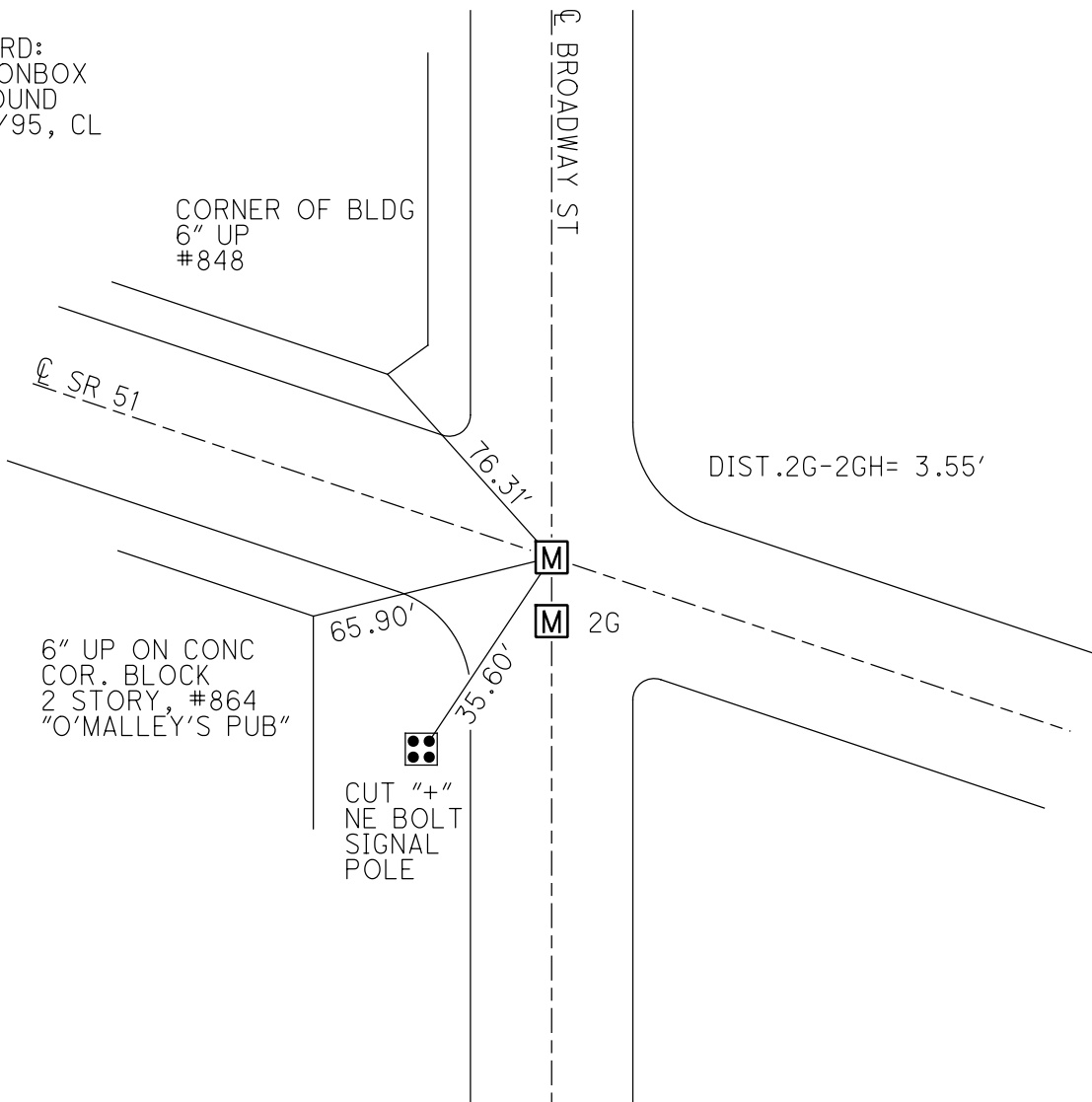
GEOID: _____

GRID: NORTHING: _____

EASTING: _____



RECORD:
FD MONBOX
9" ROUND
10/11/95, CL



O.D.O.T. DISTRICT 2 SURVEY OFFICE (USE ONLY)

PERSONNEL

REFERENCE NO. 2 H

SHEET 8 OF 8

NOTES LOEHRKE DATE 10/11/95

H.C. ROUSOS WEATHER NICE

R.C. CANTERBURY TEMP. 75°

ROUTE SR 51

COUNTY LUCAS

TOWNSHIP CITY OF TOLEDO

SECTION 6

DWG BY NIESE PID _____

T 10 S R 8 E

TYPE MONUMENT DRILL HOLE

~~ON SURFACE~~ - BELOW 1 1/2" - 2"

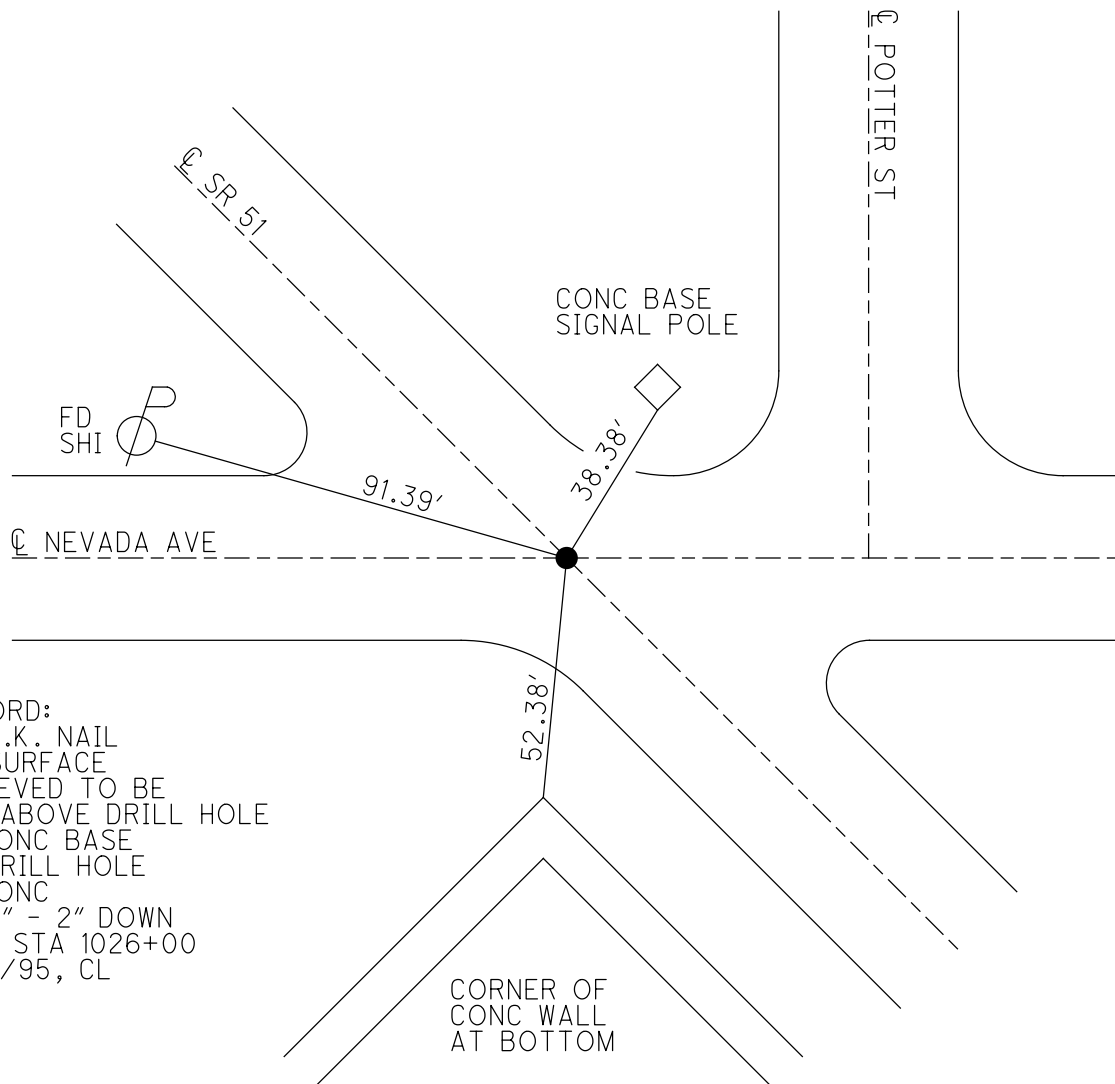
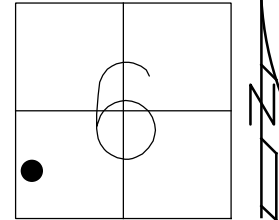
OFFSET \odot PAVEMENT ON LT : RT

- TO - EDGE PAVEMENT

STATION: 124+08

HORIZ.DATUM: _____ GEOID: _____

GRID: NORTHING: _____ EASTING: _____



RECORD:
 FD P.K. NAIL
 ON SURFACE
 BELIEVED TO BE
 SET ABOVE DRILL HOLE
 IN CONC
 FD DRILL HOLE
 IN CONC
 1 1/2" - 2" DOWN
 SR 2 STA 1026+00
 10/11/95, CL

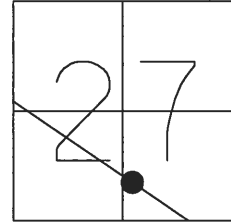
O.D.O.T. DISTRICT 2 SURVEY OFFICE (USE ONLY)

PERSONNEL _____ REFERENCE NO. 35 SHEET 1 OF 2

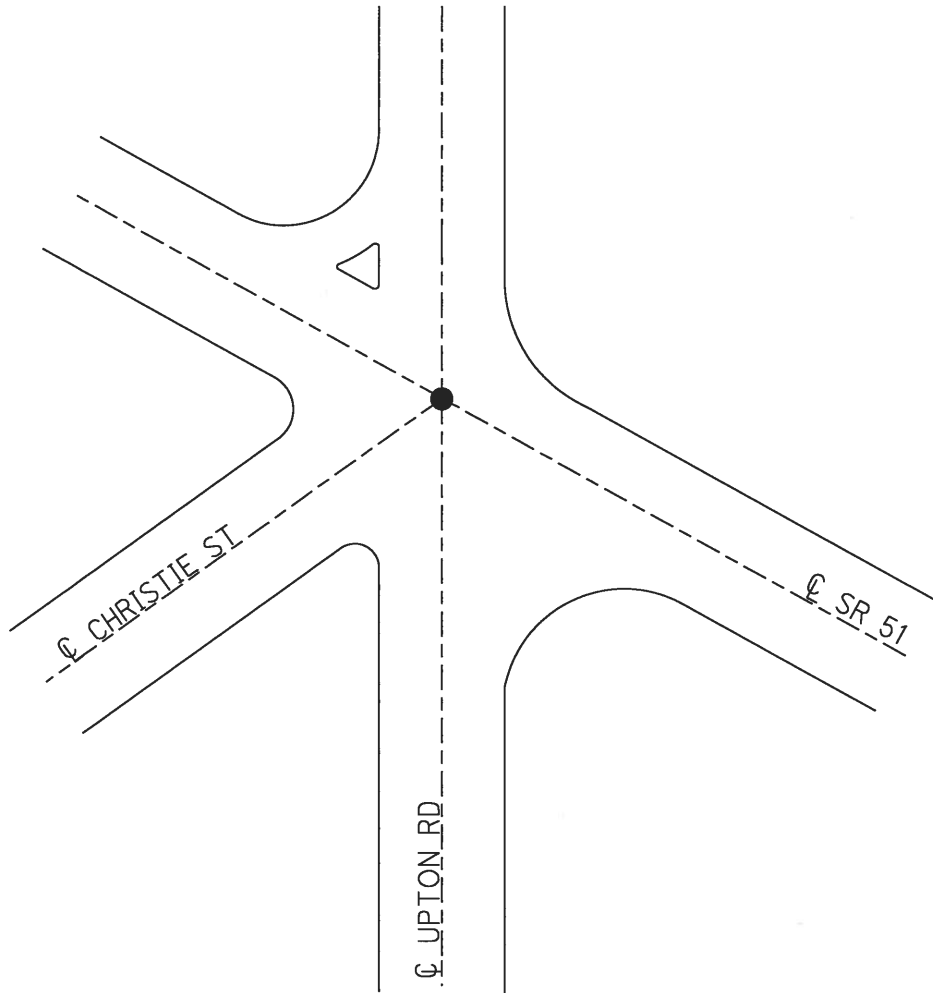
NOTES DENNO DATE 9-10-71 ROUTE SR 51
H.C. CURTIS WEATHER FAIR COUNTY LUCAS
R.C. STEVENS TEMP. 70° TOWNSHIP TOLEDO
BARANNAN SECTION 27
T9S R7E

TYPE MONUMENT FIP IN MONBOX
ON SURFACE - BELOW ON
LEFT - ☉ PAV'T - RIGHT _____
_____ TO _____ EDGE PAVEMENT
S.L.M. 365+76.99

Grid: Northing: 732995.7578 Easting: 1671009.6268



RECORD:
FIP IN MONBOX
REF35
3-20-13



O.D.O.T. DISTRICT 2 SURVEY OFFICE (USE ONLY)

PERSONNEL _____ REFERENCE NO. 36 SHEET 2 OF 2

NOTES DENNO DATE 9-10-71 ROUTE SR 51
H.C. CURTIS WEATHER FAIR COUNTY LUCAS
R.C. STEVENS TEMP. 70° TOWNSHIP TOLEDO
BARANNAN SECTION 28
T 9 S R 7 E

TYPE MONUMENT STONE IN MONBOX

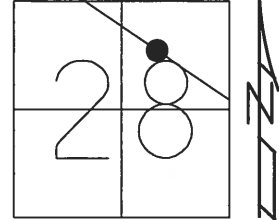
ON SURFACE - BELOW ON

LEFT - ☉ PAV'T - RIGHT _____

_____ TO _____ EDGE PAVEMENT

S.L.M. 334+22.40

Grid: Northing: 731273.2632 Easting: 1673652.4334



RECORD:
STONE IN MONBOX
REF36
3-20-13

