

O.D.O.T. DISTRICT 2 SURVEY OFFICE (USE ONLY)

PERSONNEL

REFERENCE NO. 2 G

SHEET 7 OF 8

NOTES LOEHRKE  
 H.C. ROUSOS  
 R.C. CANTERBURY

DATE 10/11/95  
 WEATHER NICE  
 TEMP. 75°

ROUTE SR 51  
 COUNTY LUCAS  
 TOWNSHIP CITY OF TOLEDO  
 SECTION 7  
 T 10 S R 8 E

DWG BY NIESE PID \_\_\_\_\_

TYPE MONUMENT MONBOX

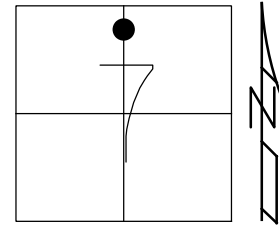
ON SURFACE - ~~BELOW~~ ON

OFFSET ☐ PAVEMENT ON LT : RT  
- TO - EDGE PAVEMENT

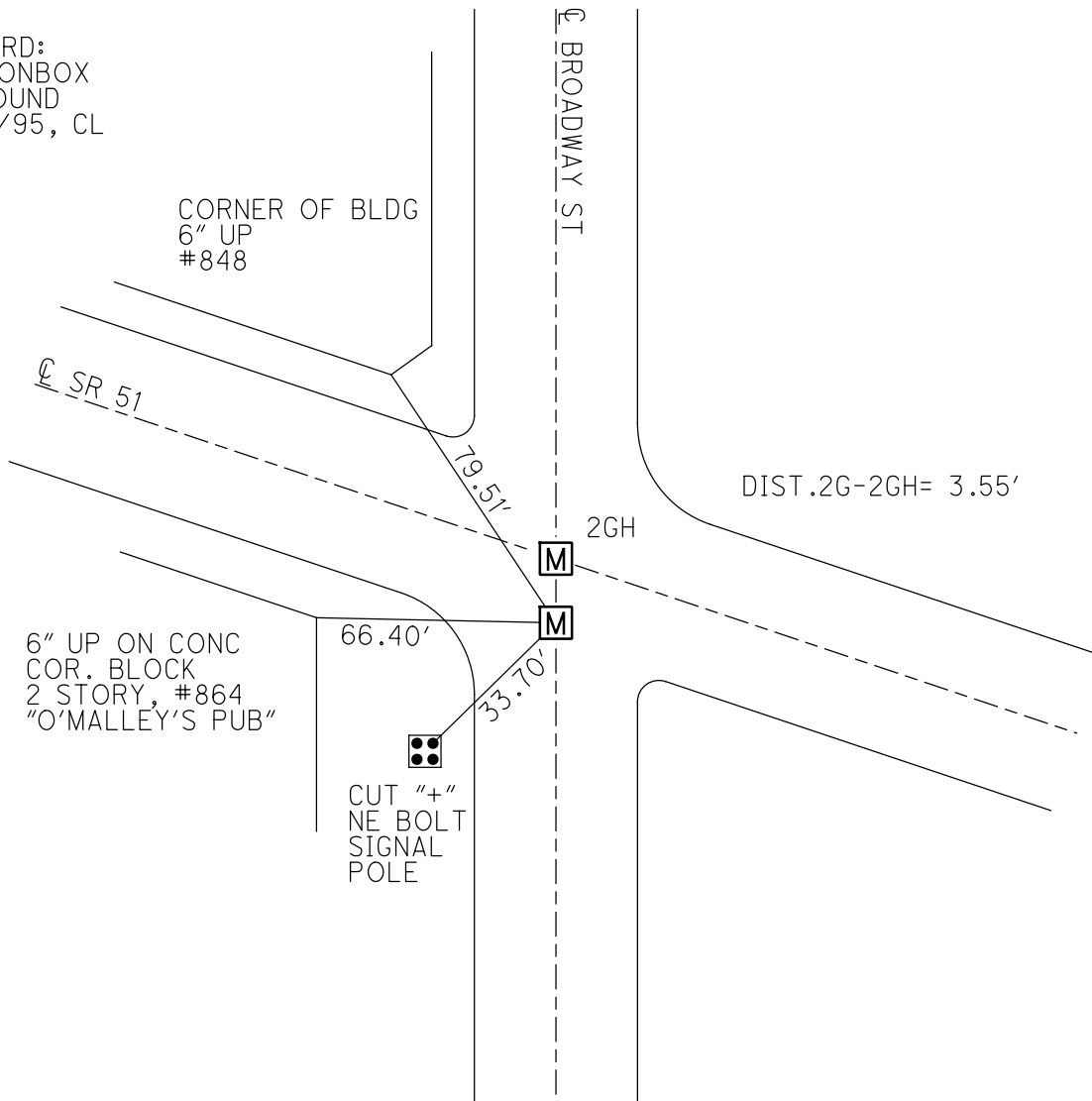
STATION: 93+09

HORIZ.DATUM: \_\_\_\_\_ GEOID: \_\_\_\_\_

GRID: NORTHING: \_\_\_\_\_ EASTING: \_\_\_\_\_



RECORD:  
 FD MONBOX  
 9" ROUND  
 10/11/95, CL



# O.D.O.T. DISTRICT 2 SURVEY OFFICE

PERSONNEL \_\_\_\_\_

REFERENCE NO. 2 "G"

SHEET \_\_\_\_\_ OF \_\_\_\_\_

NOTES LOEHRKE

H.C. ROUSOS

R.C. CANTERBURY

DATE 10/11/95

WEATHER NICE

TEMP. +75°

ROUTE S.R. 51

COUNTY LUCAS

TOWNSHIP \_\_\_\_\_

SECTION \_\_\_\_\_

T \_\_\_\_\_ R \_\_\_\_\_

TYPE MONUMENT MAN BOX

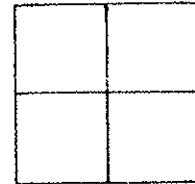
ON SURFACE - BELOW ON SURFACE

LEFT - Q PAVT. - RIGHT ON Q

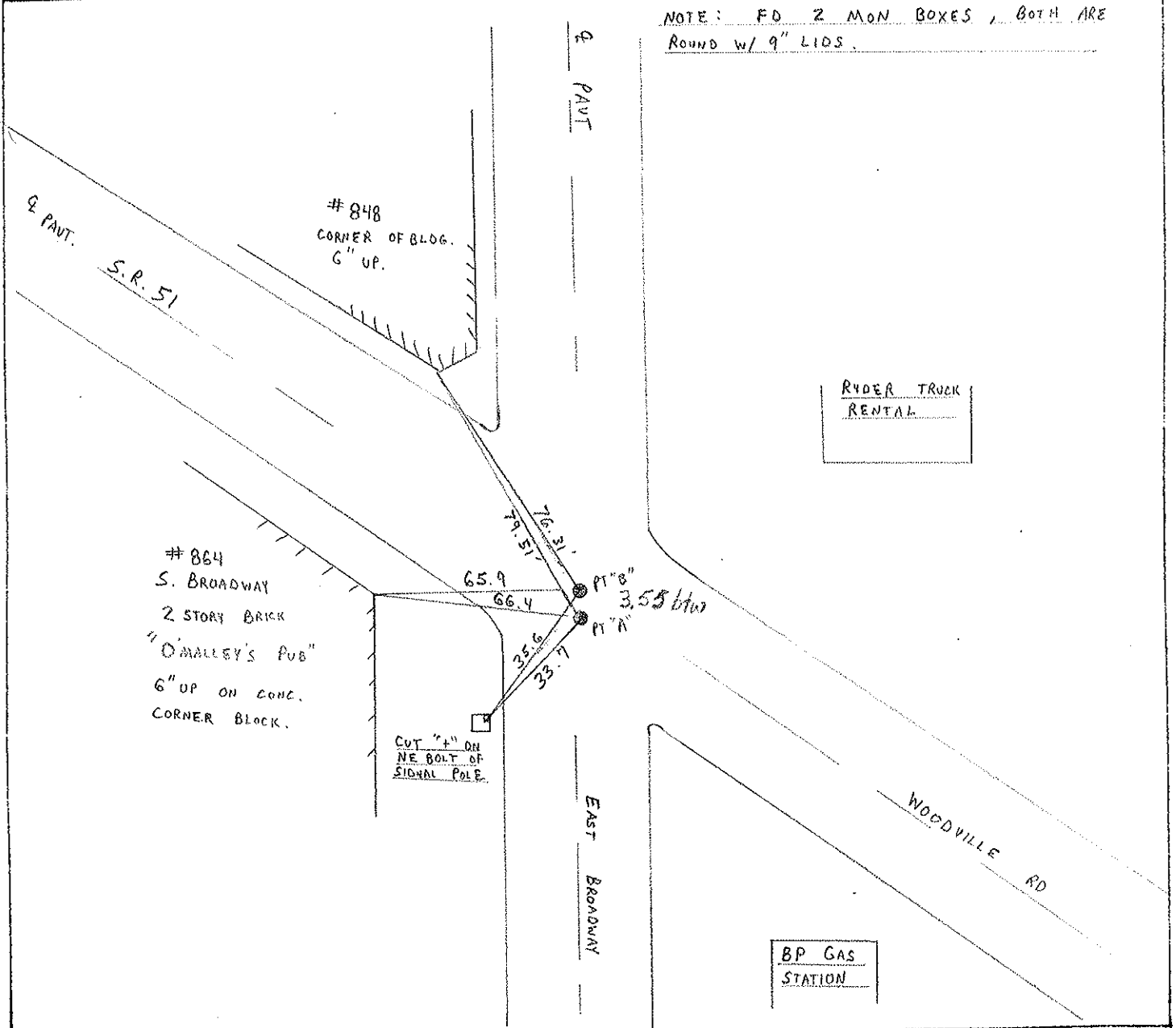
TO EDGE PAVEMENT

S.L.M. PT "A" = 93+09 PT "B" = 93+10

*SLM = 1.77 (BOOK)*



NOTE: FO 2 MON BOXES, BOTH ARE ROUND W/ 9" LIDS.

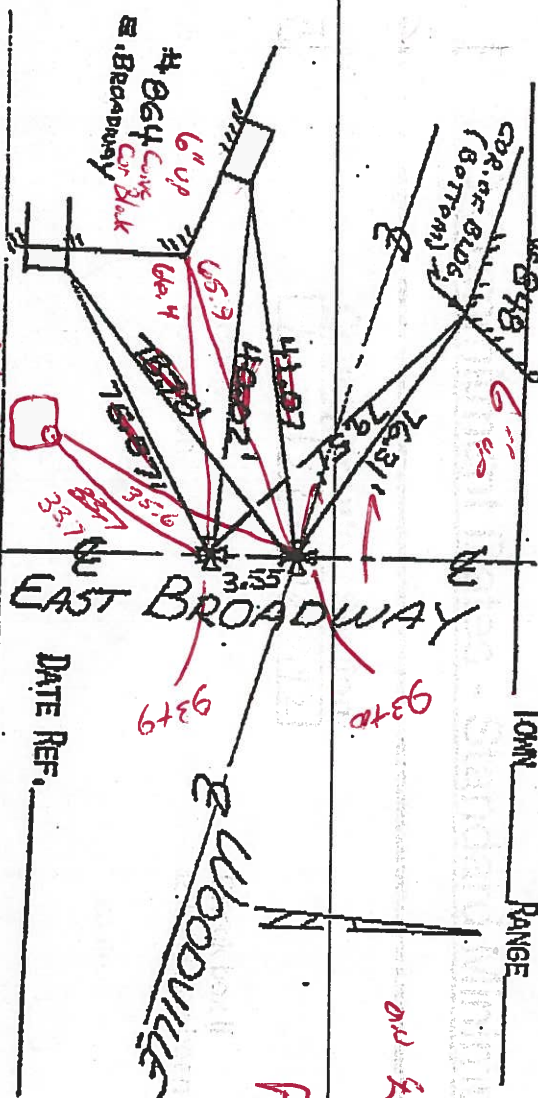


PLANNING REFERENCE:

LOCATION  
E. BROADWAY & WOODVILLE

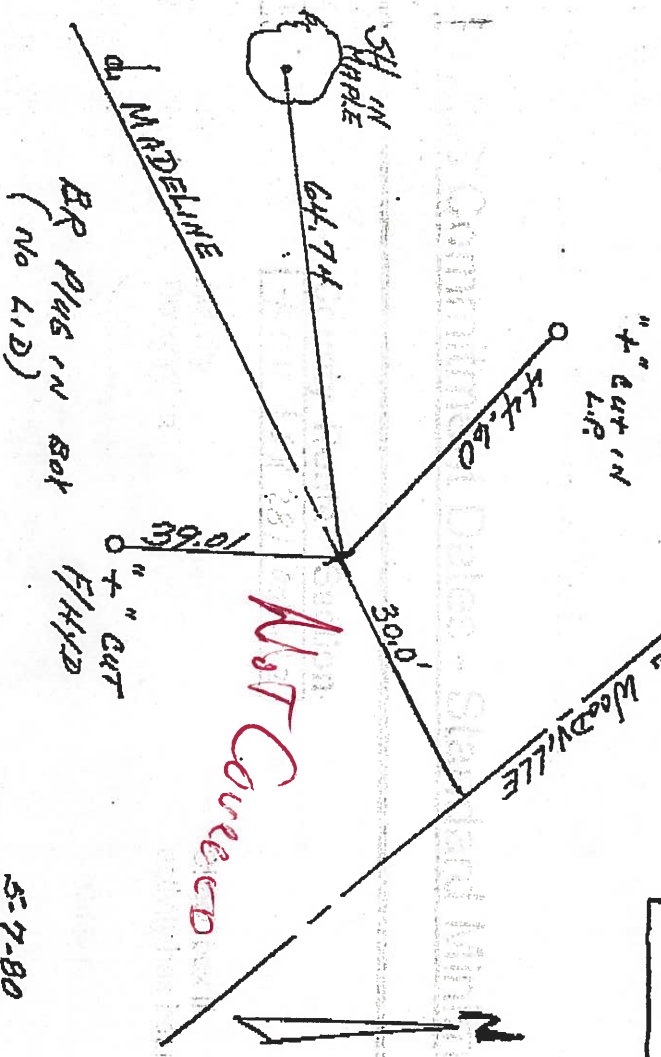
ATLAS No. 30

TOWNSHIP RANGE



DATE REF. \_\_\_\_\_

Sec. 7 30



5-7-80