

O.D.O.T. DISTRICT 2 SURVEY OFFICE (USE ONLY)

PERSONNEL

REFERENCE NO. 2 H

SHEET 8 OF 8

NOTES LOEHRKE DATE 10/11/95

H.C. ROUSOS WEATHER NICE

R.C. CANTERBURY TEMP. 75°

ROUTE SR 51

COUNTY LUCAS

TOWNSHIP CITY OF TOLEDO

SECTION 6

DWG BY NIESE PID _____

T 10 S R 8 E

TYPE MONUMENT DRILL HOLE

~~ON SURFACE~~ - BELOW 1 1/2" - 2"

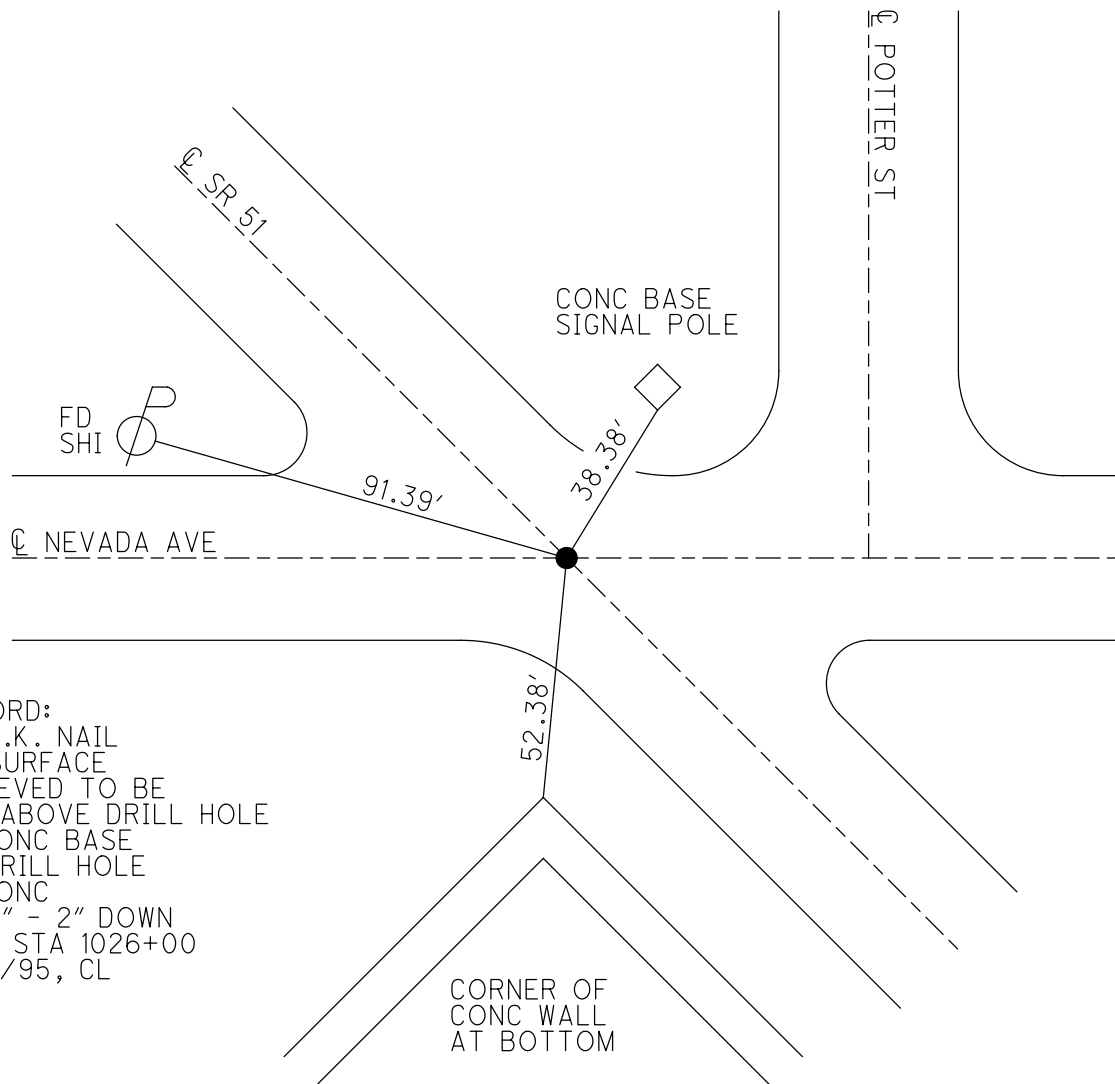
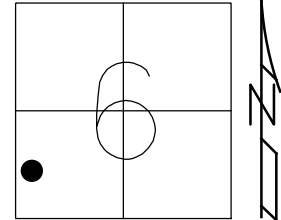
OFFSET \odot PAVEMENT ON LT : RT

- TO - EDGE PAVEMENT

STATION: 124+08

HORIZ.DATUM: _____ GEOID: _____

GRID: NORTHING: _____ EASTING: _____



RECORD:
 FD P.K. NAIL
 ON SURFACE
 BELIEVED TO BE
 SET ABOVE DRILL HOLE
 IN CONC BASE
 FD DRILL HOLE
 IN CONC
 1 1/2" - 2" DOWN
 SR 2 STA 1026+00
 10/11/95, CL

CORNER OF
 CONC WALL
 AT BOTTOM

O.D.O.T. DISTRICT 2 SURVEY OFFICE

PERSONNEL _____

REFERENCE NO. 2 "H"

SHEET _____ OF _____

NOTES LOEHRKE

H.C. ROUSOS

R.C. CANTERBURY

DATE 10/11/95

WEATHER NICE

TEMP. +75°

ROUTE S.R. #51 + #2

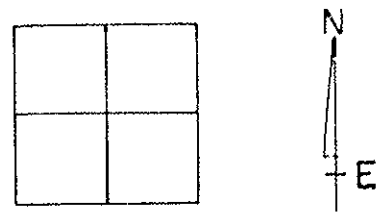
COUNTY LUCAS

TOWNSHIP _____

SECTION 6

T10 S R 8 E

TYPE MONUMENT DRILL HOLE IN CONC.
 ON SURFACE - BELOW 1 1/2" - 2" BELOW
 LEFT - Q PAV'T. - RIGHT Q BOTH
 TO EDGE PAVEMENT



S.L.M. $1026 + 000 = S.R. 2 \text{ starting wing} = 19,43 \text{ SLM}$
 (BOOK = 19,45)

NOTE: FOUND PK NAIL @ SURFACE
 Q PAVT'S 51 AND NEVADA. BELIEVED TO
 SET ABOVE DRILL HOLE IN CONC. BASE.

SR51 SLM = 2.25 = 124408

