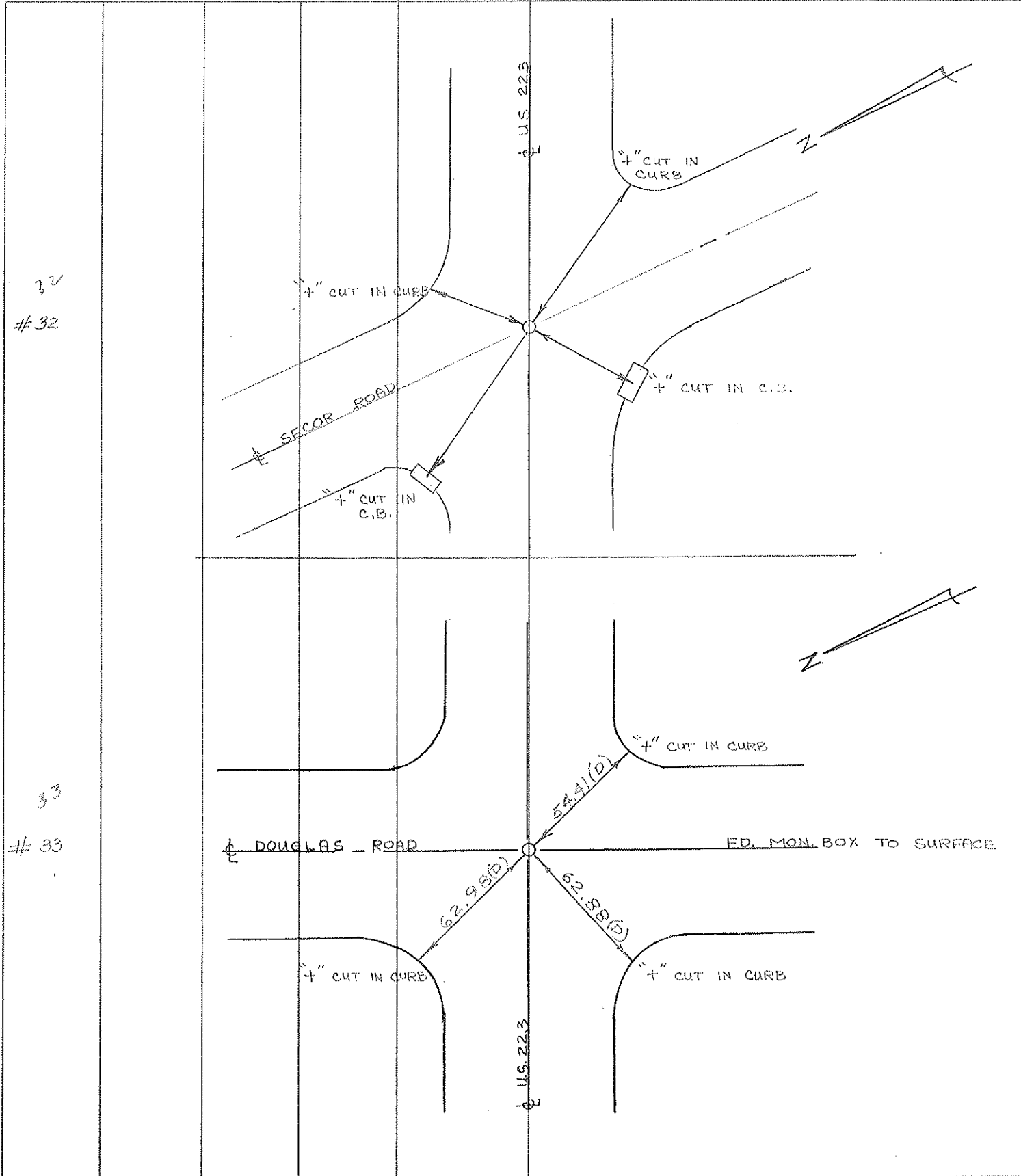


PERSONNEL	TITLE	PERSONNEL	TITLE
W. DENNO			
D. CURTIS			
D. STEVENS			
R. BRANNAN			

COUNTY LUCAS DATE 8 SEPT 71
 S. R. U.S. 223 WEATHER FAIR
 SEC. Toledo TEMP. 85 ±

DESCRIPTION _____ REFERENCES TO CONTROL POINTS _____ JOB NO. _____
 LEFT CENTER LINE RIGHT

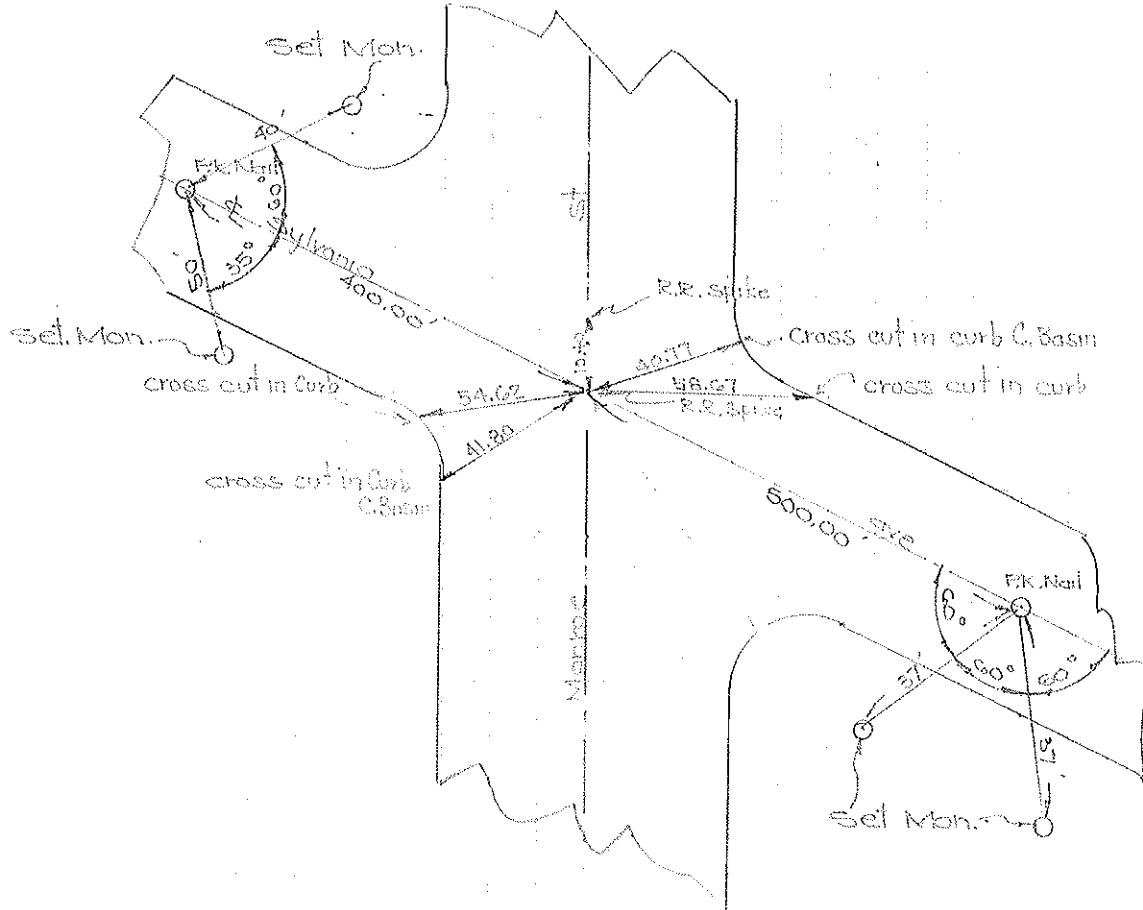


32
32

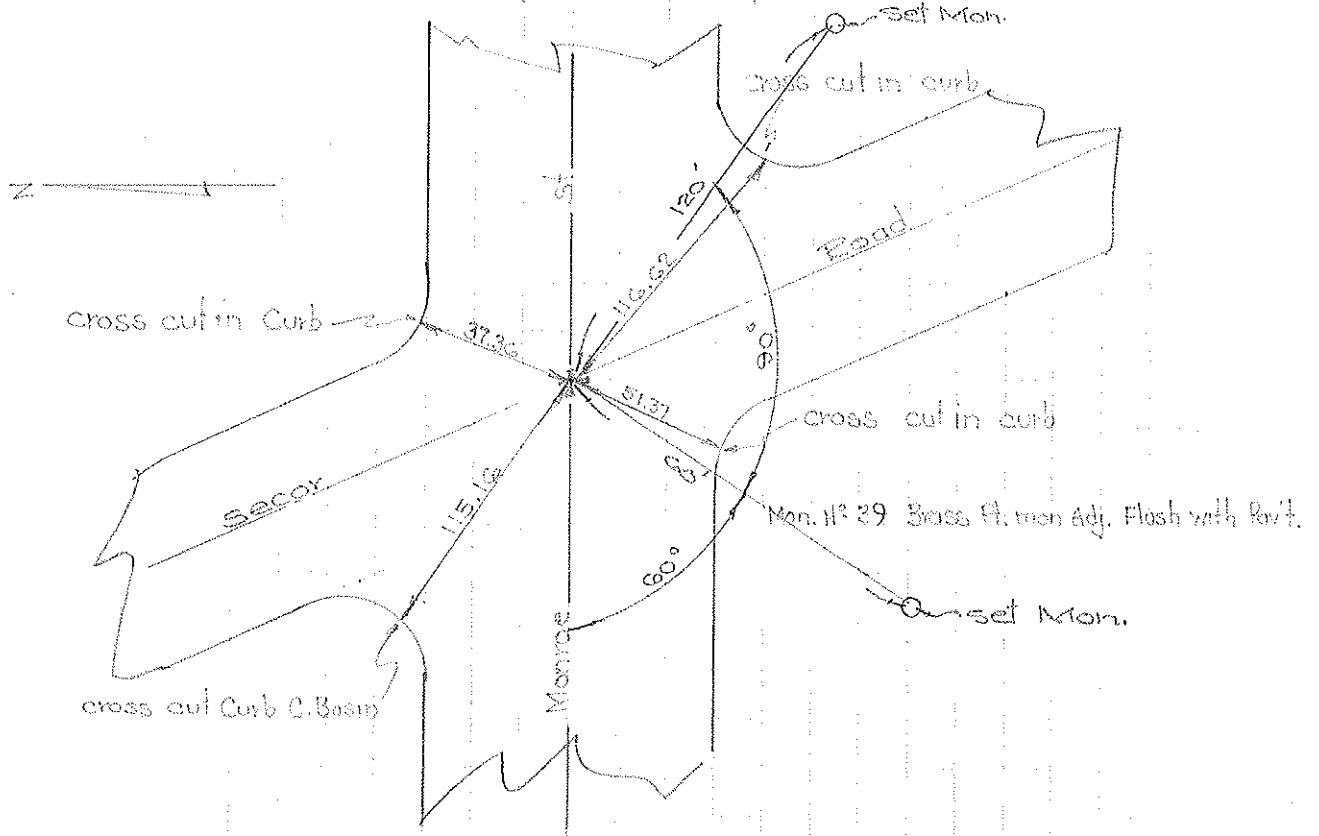
33
33

COMPUTATION SHEET

STATE OF OHIO — DEPARTMENT OF HIGHWAYS — BUREAU OF LOCATION AND DESIGN ————— COLUMBUS, OHIO
 BY Dennis Curtis-Granda-Oney DATE June 2, 1966 NO. OF SHEETS
 COUNTY Lucas SECTION
 I. NO. S.R. US 223 U.S.R. I. R.
 SUBJECT OF THIS SHEET Monument Ref. Monroe St



$11^{\circ} 38'$ R.R. spike Monroe & Sylvania Sta 221+49.92



Mon. 11° 29' Brass Pt. mon Adj. Flush with Pav't.

PERSONNEL	TITLE	PERSONNEL	TITLE	COUNTY	DATE
<u>BLOY</u>	<u>P.C.</u>			<u>LUCAS</u>	<u>8/20/12</u>
<u>BULLOCKS</u>				S. R. # <u>223</u>	WEATHER <u>Cloudy Rain</u>
<u>CHARPENS</u>				SEC. <u>MONROE ST.</u>	TEMP. <u>72</u>

DESCRIPTION REF TO Map on MONROE ST. & SURVEY JOB NO. _____

	LEFT	CENTER LINE	RIGHT
283+55.65	SECOR RD. (SET RR SPIKE)		$\Delta = 0^{\circ} 09' 00''$ RT.
37.36	N.E. To "X" IN CONC. CURB		
116.62	S.E. To "X" IN CONC. CURB		NOTE: ALL RR SPIKES HAVE
51.37	S.W. To "X" IN CONC. CURB		chiseled "X" IN TOP
115.16	N.W. To "X" IN IRON CURB COVER OF C.B.		
315+27.85	ELCINHURST (SET RR SPIKE)		$\Delta = 0^{\circ} 01' 30''$ RT.
48.33	N.W. To "X" IN IRON COVER OF C.B.		
56.43	S.W. To "X" IN IRON CURB COVER OF C.B.		
45.31	S.E. To "X" IN CONC. CURB		
44.10	N.E. To "X" IN CONC. CURB		
334+23.04	MAYWELL RD. (SET RR SPIKE)		$\Delta = 0^{\circ} 06' 30''$ RT.
57.76	N.W. To "X" IN IRON CURB COVER OF C.B.		
53.27	S.W. To "X" IN IRON CURB COVER OF C.B.		
28.05	S.E. To "X" IN CONC. CURB		
46.02	N.E. To "X" IN CONC. CURB		
P.I. 347+03.22	SEC. Line 21/20 (SET RR SPIKE)		$\Delta = 0^{\circ} 01' 20''$ RT.
43.43	N.W. To "X" IN CONC. CURB		
31.85	N.E. To "X" IN CONC. CURB		
39.19	S.E. To "X" IN CONC. CURB		
42.80	S.W. To "X" IN CONC. CURB		
365+24.14	P.I. SEC. Line 21/20 (SET RR SPIKE)		$\Delta = 0^{\circ} 00' 00''$
(CENTRAL AVE)			

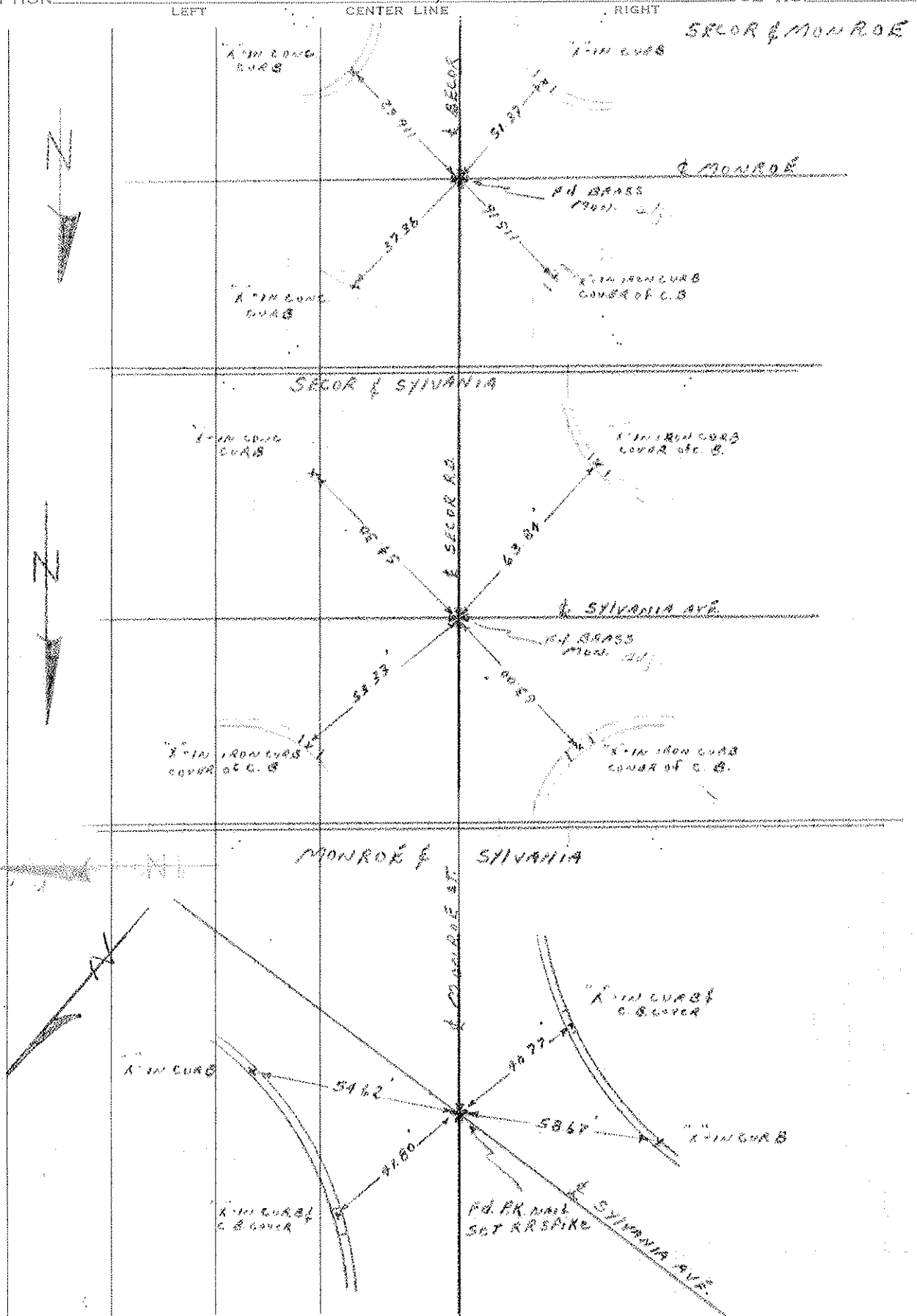
PERSONNEL	TITLE	PERSONNEL	TITLE
BIAS	NOTES	CHAFFOIRS	
DENITZ			
BUNDLOS			
Ambruse			

COUNTY LUCAS DATE 6/5/62

S. R. _____ WEATHER Clear

SEC. _____ TEMP. 75°

DESCRIPTION TIES TO MON - MONROE & SECOR RD JOB NO. _____



(9)

Town 9S Range 7E

1/4 Corner of Sections 19-20

Kind of Monument 1 Pin Remarks

FOUND SET 7-20-14 BY Shoemaker

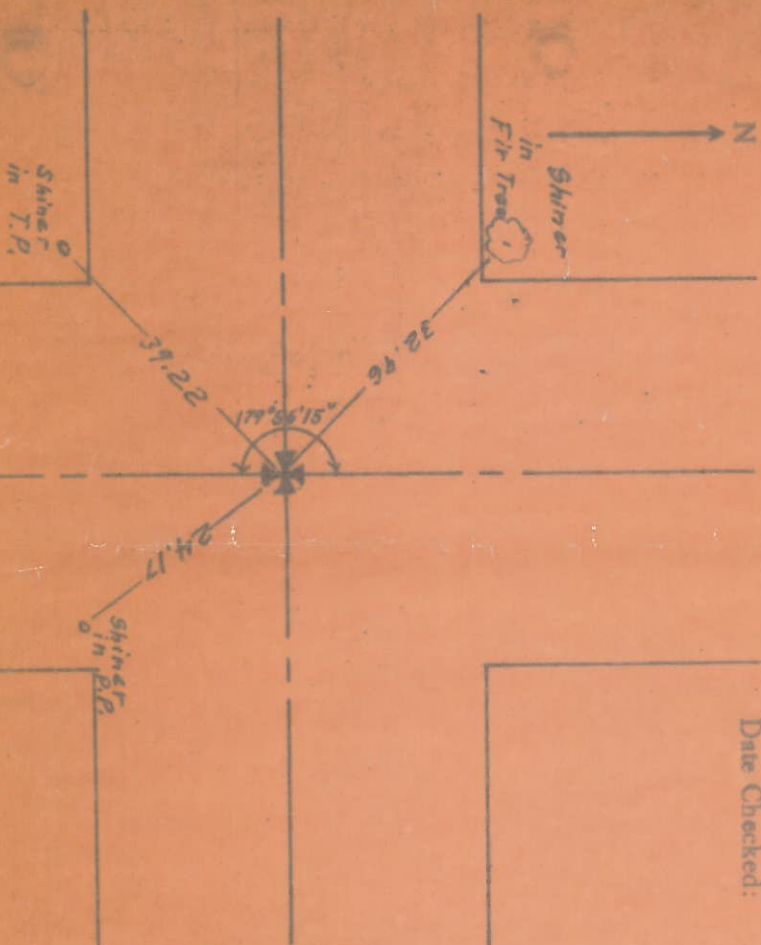
N. & S. Road Secor

F. B. P.

E. & W. Road

F. B. P.

Date Checked:



(8)

Town 9S Range 7E

Sec. Corner of Sections 17-18-19-20

Kind of Monument 1 Pin Remarks

FOUND SET BY

N. & S. Road Secor

F. B. 334 P.

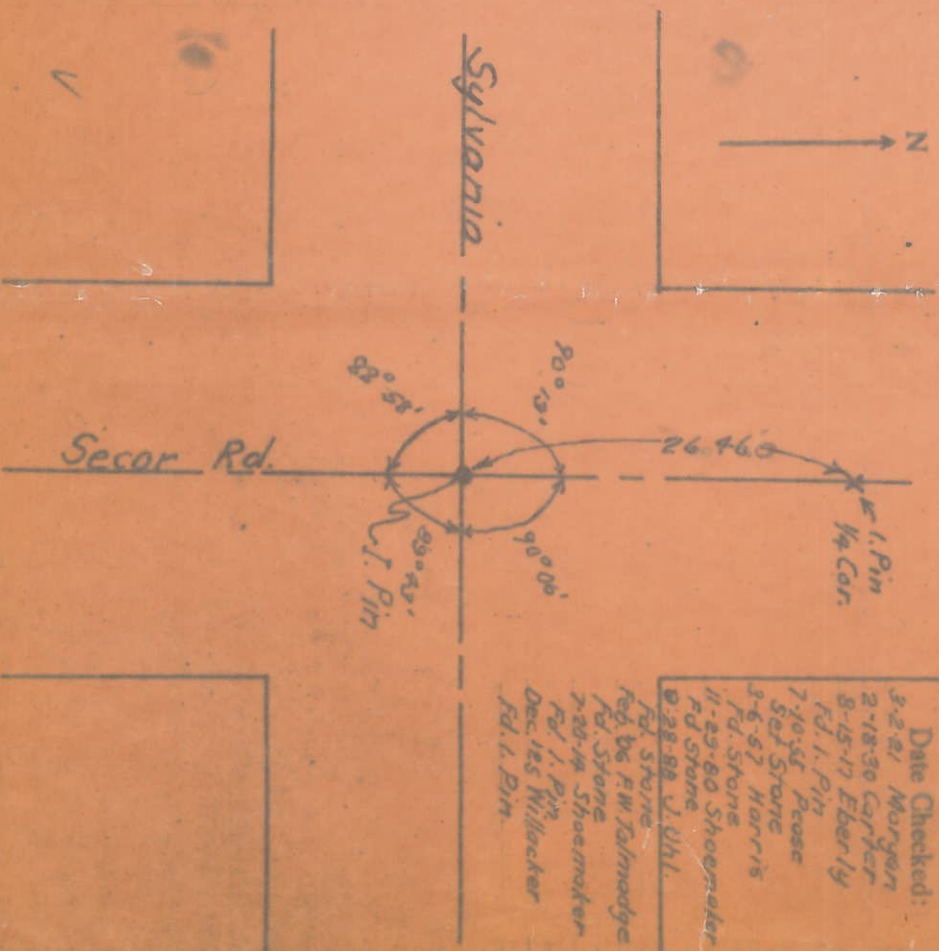
E. & W. Road Sylvania

R. B. 220 P.

Date Checked:

- 3-2-21 Morgan
- 2-18-30 Carper
- 8-15-17 Eberly
- Fd. 1. Pin
- 7-10-54 Pease
- Set Stone
- 3-6-57 Harris
- Fd. Stone
- 11-23-60 Shoemaker
- Rd Stone
- 2-28-82 J. Uhl

- Fd. Stone
- Feb. 06 F.W. Talmadge
- Fd. Stone
- 7-20-14 Shoemaker
- Fd. 1. Pin
- Dec. 185 Willacker
- Fd. 1. Pin



(10)

Town 95 Range 7E

Road Corner of Sections 19-20

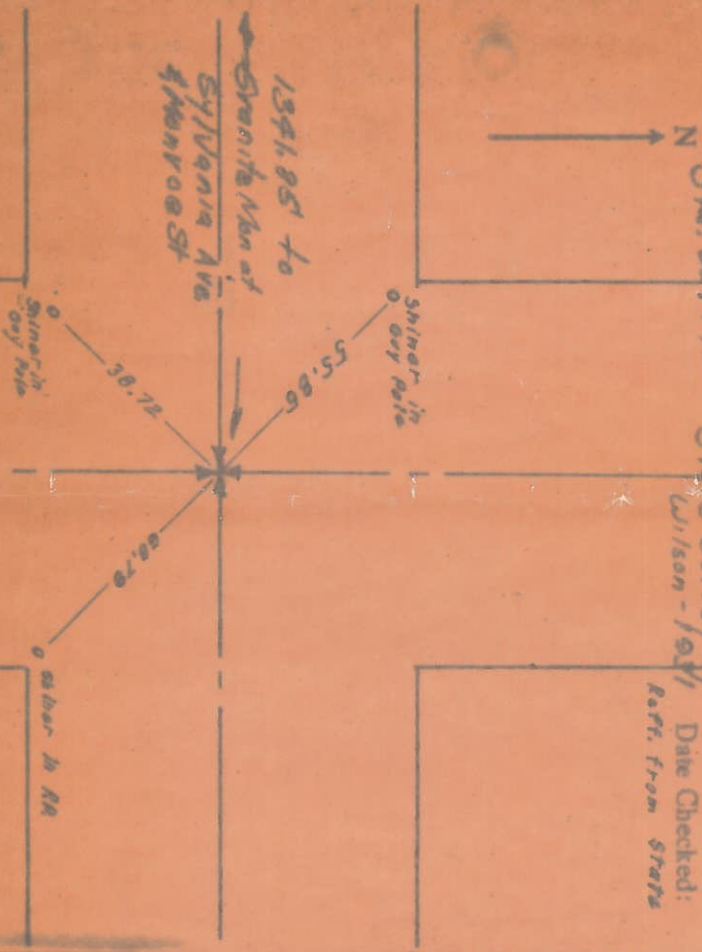
Kind of Monument 1 Pin Remarks

FOUND 12-16-24 BY C. H. Wilson

N. & S. Road Secor F. B. P.

E. & W. Road Morroe F. B. P.

Sta. 234+91.2 State Survey by Wilson - 1921 Date Checked: Ref. from starts



(11)

Town 95 Range 6E

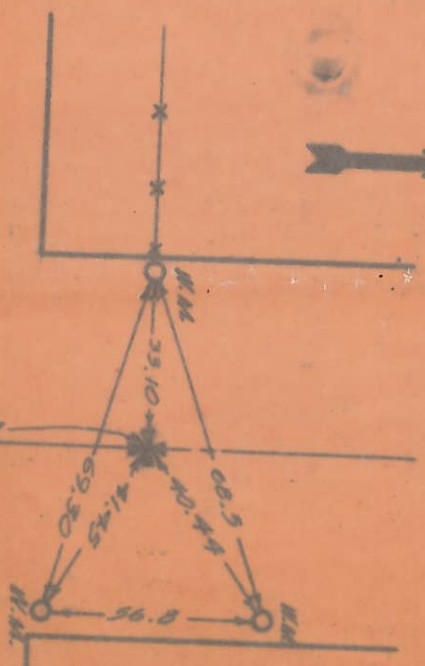
Corner of Sections 12-13

Kind of Monument Co. Mon Remarks 15' below

FOUND 10-27-52 BY Phillips

N. & S. Road Talmadge F. B. P.

E. & W. Road Laskey F. B. P.



Date Checked: 1948 Law
Ed. Pin
1950 H. Miller
H. Pin
1954 Guest

PERSONNEL TITLE PERSONNEL TITLE

COUNTY LUCAS DATE 3-19-59

S. R. U.S. #223 WEATHER

SEC. MONROE ST. TEMP.

MONUMENTS

DESCRIPTION LEFT CENTER LINE RIGHT JOB NO.

STA. 183plus35.87	FLANDERS RD.	BRASS PLATE
STA. 196plus69.93		BRASS PLATE
STA. 211plus58.08 ⁰⁸	TALMADGE RD.	BRASS PLATE
STA. 232plus28.83	P.C.	BRASS PLATE
STA. 234plus72.94 ⁹⁴	P.I.	Cross in Conc.
STA. 237plus16.21	P.T.	BRASS PLATE
STA. 251plus79.91	HARVEST LANE	Iron Rod in Conc.
STA. 270plus14.44	SYLVANIA AVE.	Hole In Conc. MON.
STA. 283plus55.65	SECOR RD.	ADJ. BRASS MON.