

PERSONNEL	TITLE	PERSONNEL	TITLE
W. DENNO			
D. CURTIS			
D. STEVENS			
R. BRANNAN			

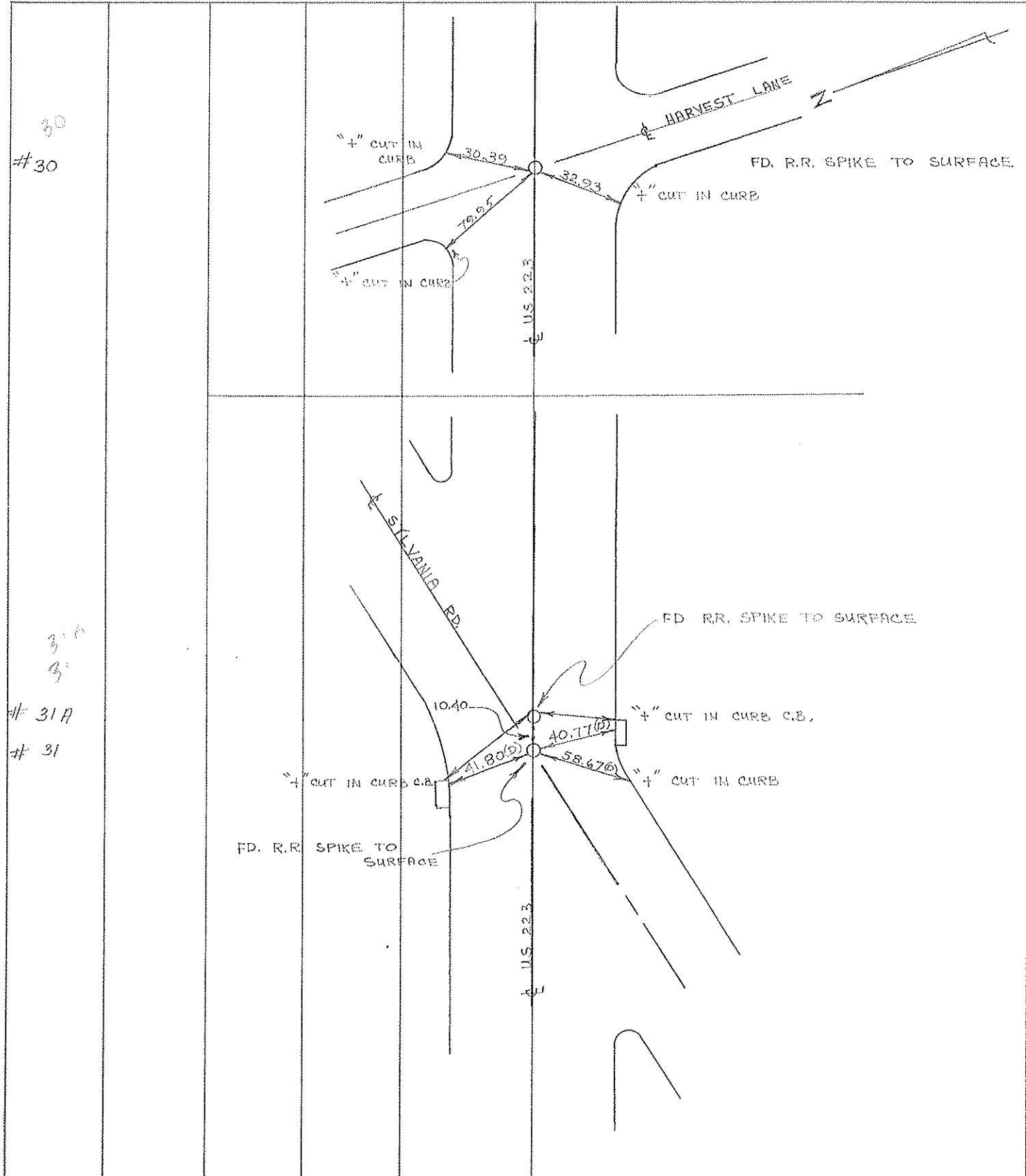
COUNTY LUCAS DATE 7 SEPT. 71

S. R. U.S. 223 WEATHER FAIR

SEC. TOLEDO TEMP. 75 ±

DESCRIPTION \_\_\_\_\_ REFERENCES TO CONTROL POINTS \_\_\_\_\_ JOB NO. \_\_\_\_\_

LEFT CENTER LINE RIGHT

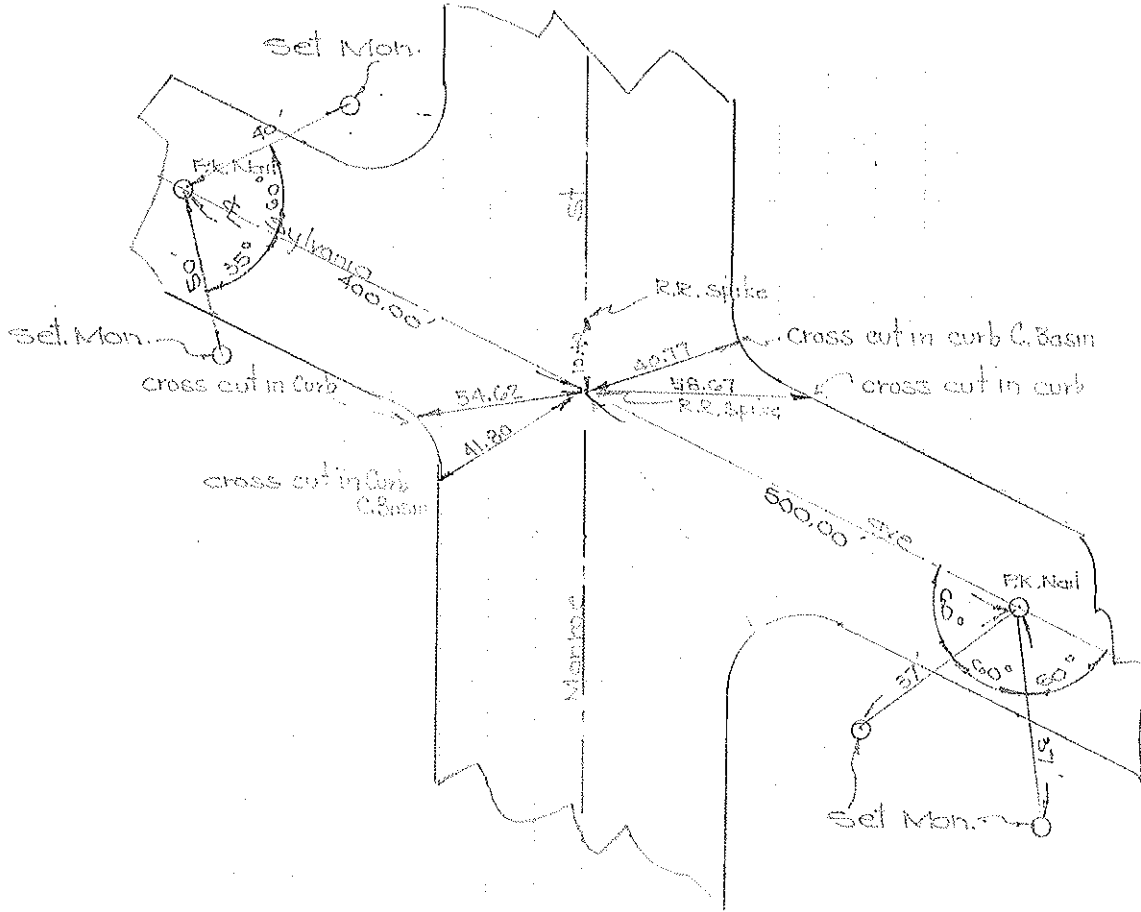


#30

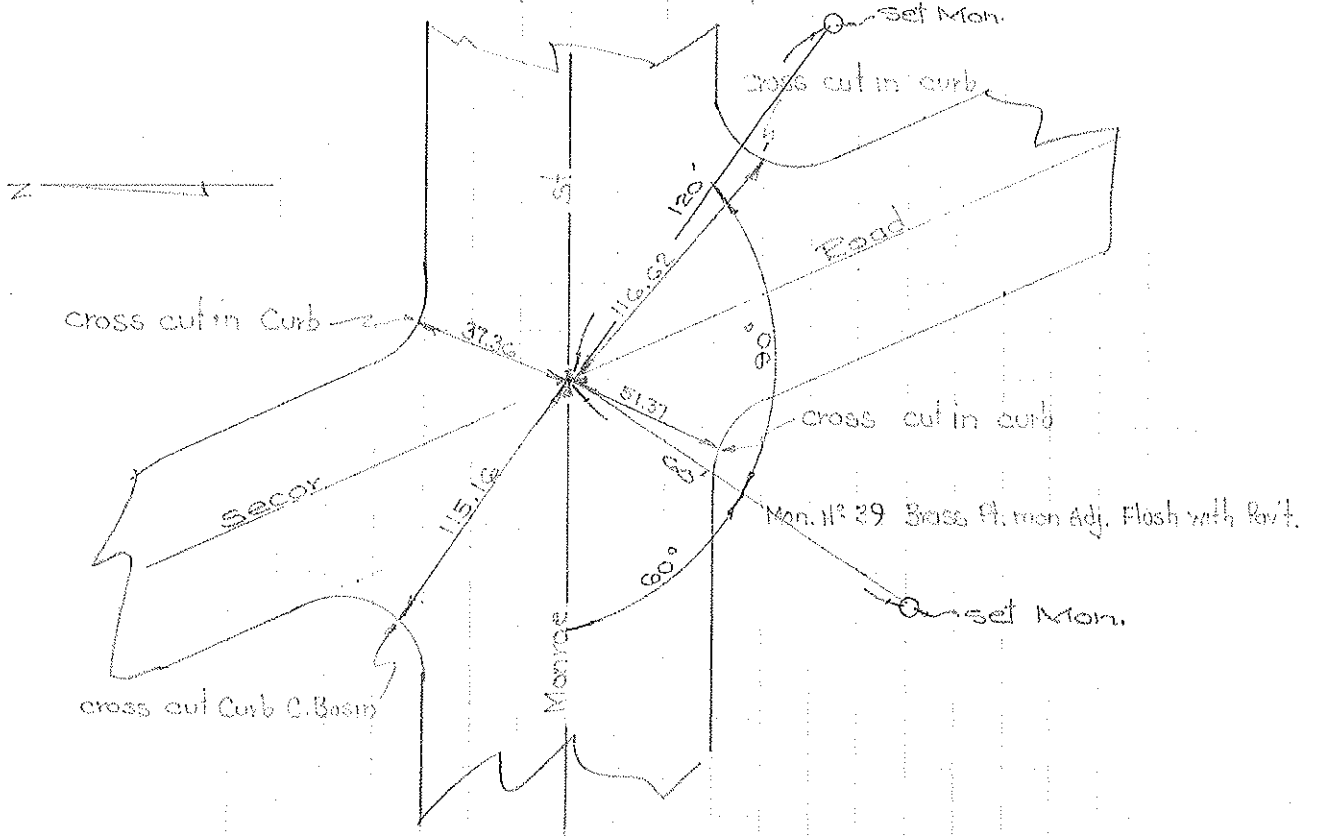
#31A  
#31

# COMPUTATION SHEET

STATE OF OHIO — DEPARTMENT OF HIGHWAYS — BUREAU OF LOCATION AND DESIGN — COLUMBUS, OHIO  
 BY Dennis Curtis-Granda-Oney DATE June 2, 1966 NO.      OF      SHEETS  
 COUNTY Lucas SECTION       
 I. NO.      S. R. US 223 U. S. R.      I. R.       
 SUBJECT OF THIS SHEET Monument Ref. Monroe St



$11^{\circ} 38'$  R.R. spike Monroe & Sylvania Sta 221+49.92



Mon. 11° 29' Brass Pt. mon Adj. Flash with Riv't.

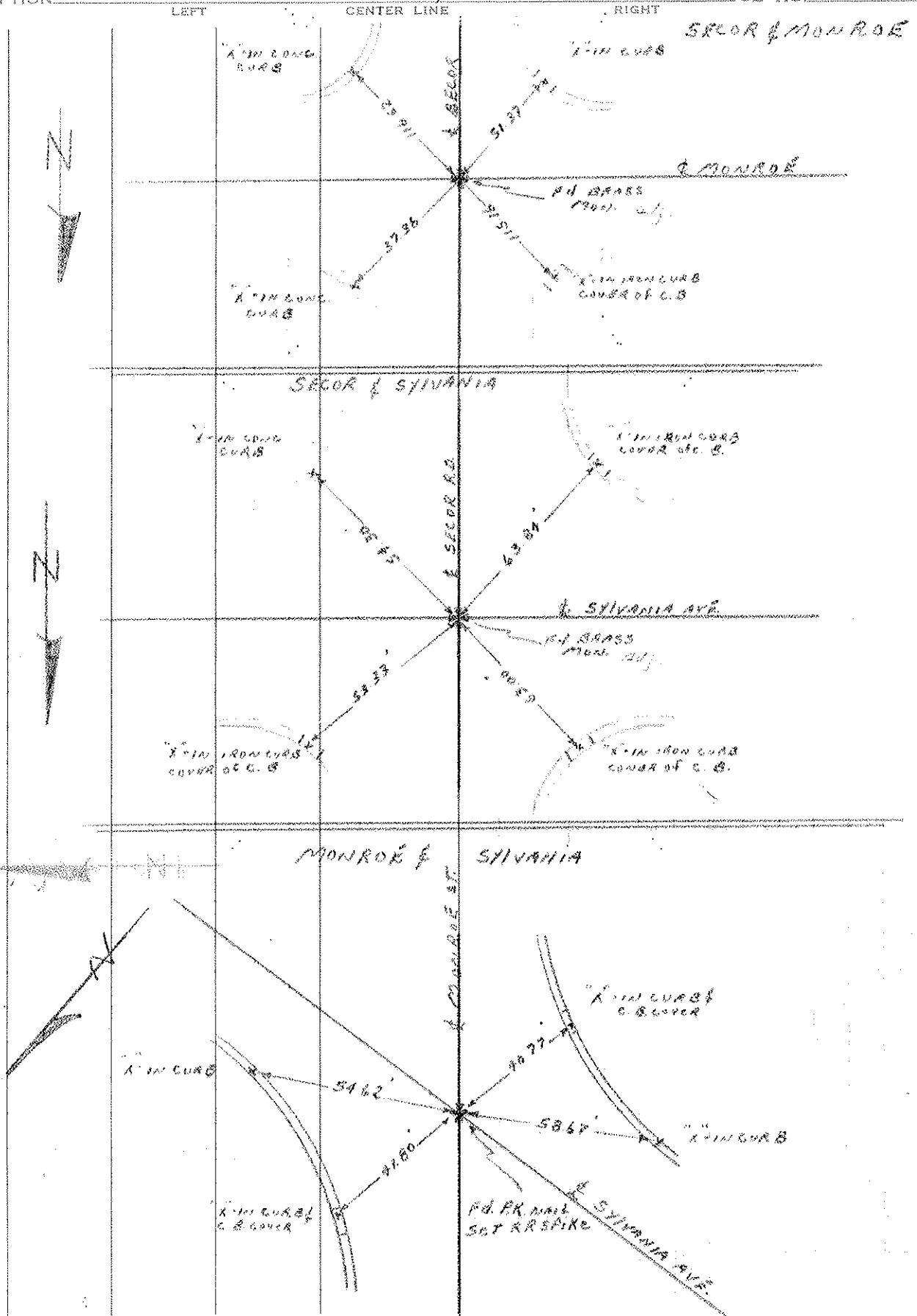
PERSONNEL	TITLE	PERSONNEL	TITLE
BIAS	NOTES	CHAFFOIRS	
DEWITZ			
BUNDLOS			
Ambruse			

COUNTY LUCAS DATE 6/5/62

S. R. \_\_\_\_\_ WEATHER Clear

SEC. \_\_\_\_\_ TEMP. 75°

DESCRIPTION TIES TO MON - MONROE & SECOR RD JOB NO. \_\_\_\_\_



Town 95 Range 7E

Road Corner of Sections 18

Kind of Monument Drass Plate Remarks

P.C. of Curve

FOUND 1931 BY Wilson (State Highway)

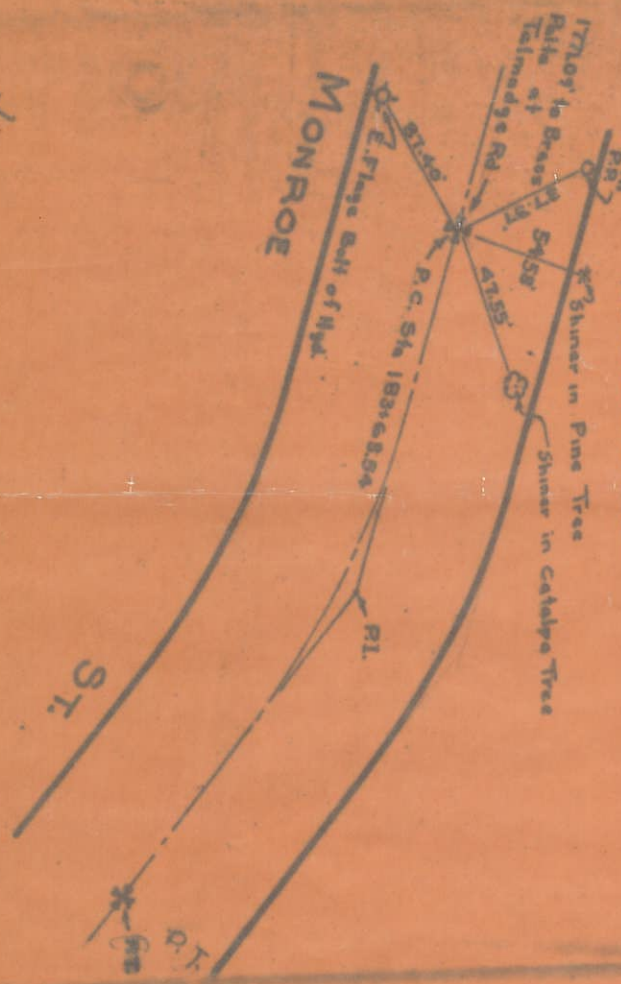
N. & S. Road TALMADGE RD F. B. 454 P.

E. & W. Road MONROE ST F. B. Sta. 103+63.54 P. Survey by Wilson 1931

Date Checked:

N CURVE DATA

$\Delta = 7^{\circ}-18'-35''$   
 $D = 1^{\circ}-30'-06''$   
 $T = 243.95'$   
 $R = 3819.26'$   
 $L = 481.28'$   
 $P.I. = Sta. 106+07.49$   
 $P.C. = Sta. 103+63.54$



Town 95 Range 7E

Road Corner of Sections 18

Kind of Monument I. Pin Remarks

Tack of surface

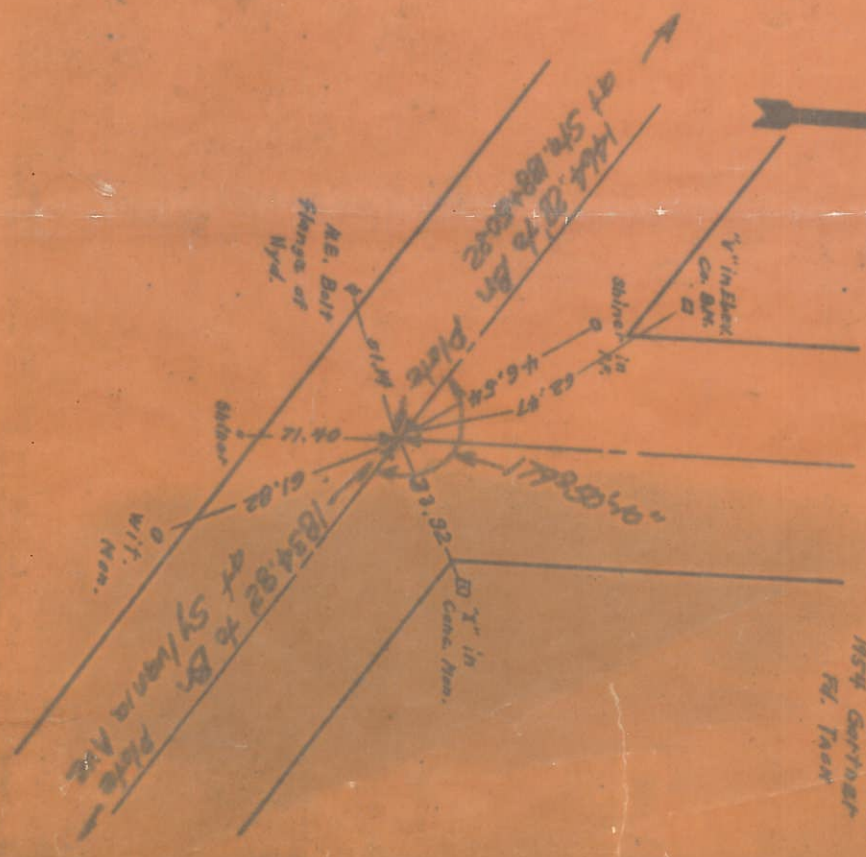
FOUND 1931 BY State (Wilson)

N. ~~W.~~ Road Harvest Lane F. B. Stale P.

E. & W. Road Menroe St. F. B. Sta. 203+15.10 P.

Date Checked:

1934 Garner  
Pl. Tack



(2)

(3)

Town 95 Range 7E

1/4 Corner of Sections 18-19

Kind of Monument Pin at surface Remarks

FOUND

3-18-54 BY Gartner

N. & S. Road N. & S. Rd. Sec. 18-19 F. B. P.

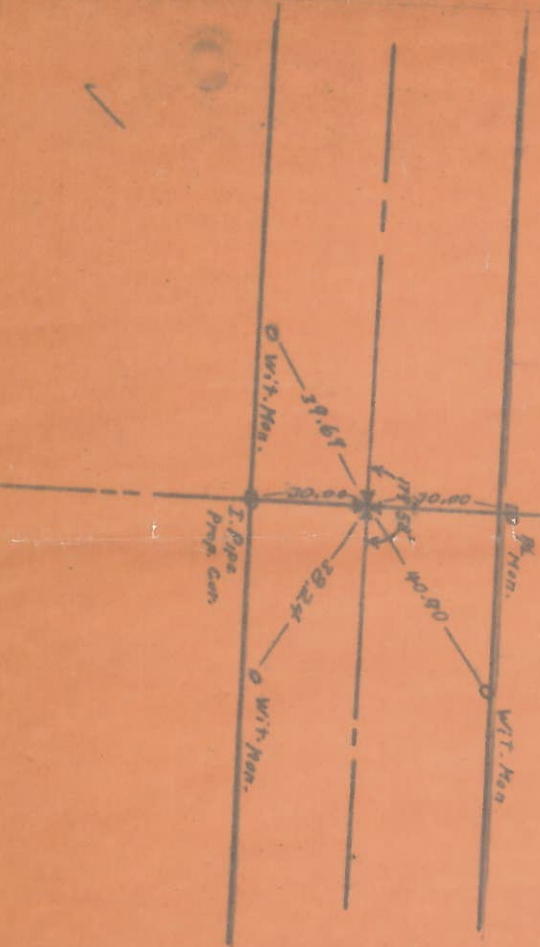
E. & W. Road Sylvania Ave. F. B. P.

Date Checked:

106 F.W. Talmadge  
1st Stone



Harvest Lane



(6)

Town 95 Range 7E

W Corner of Sections 18-19

Kind of Monument Co. Men Remarks Brass

Plate at center

FOUND

July 3, 1958 BY Limbo

N. & S. Road Talmadge F. B. P.

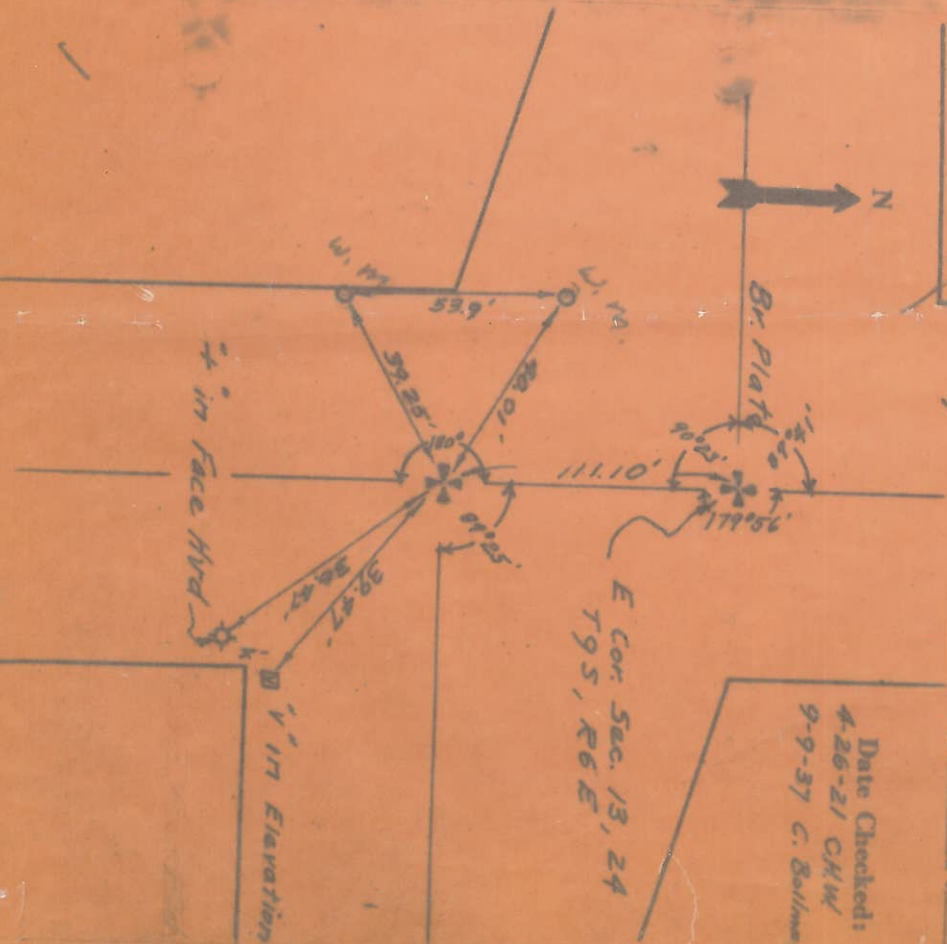
E. & W. Road Sylvania F. B. P.

Date Checked:

4-26-21 CHW  
9-9-37 C. Bollman



E. Cor. Sec. 13, 24  
T95, R6E



(7)

(9)

Town 9S Range 7E

1/4 Corner of Sections 19-20

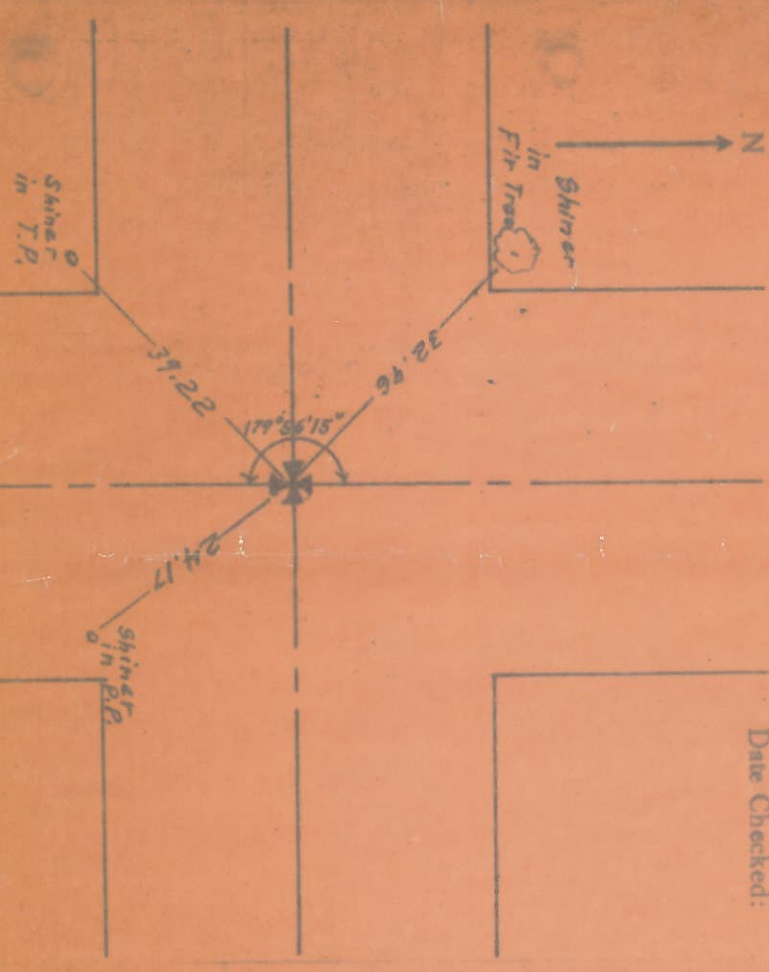
Kind of Monument 1 Pin Remarks

FOUND SET 7-20-14 BY Shoemaker

N. & S. Road Secor F. B. P.

E. & W. Road F. B. P.

Date Checked:



(8)

Town 9S Range 7E

Sec. Corner of Sections 17-18-19-20

Kind of Monument 1 Pin Remarks

FOUND SET BY

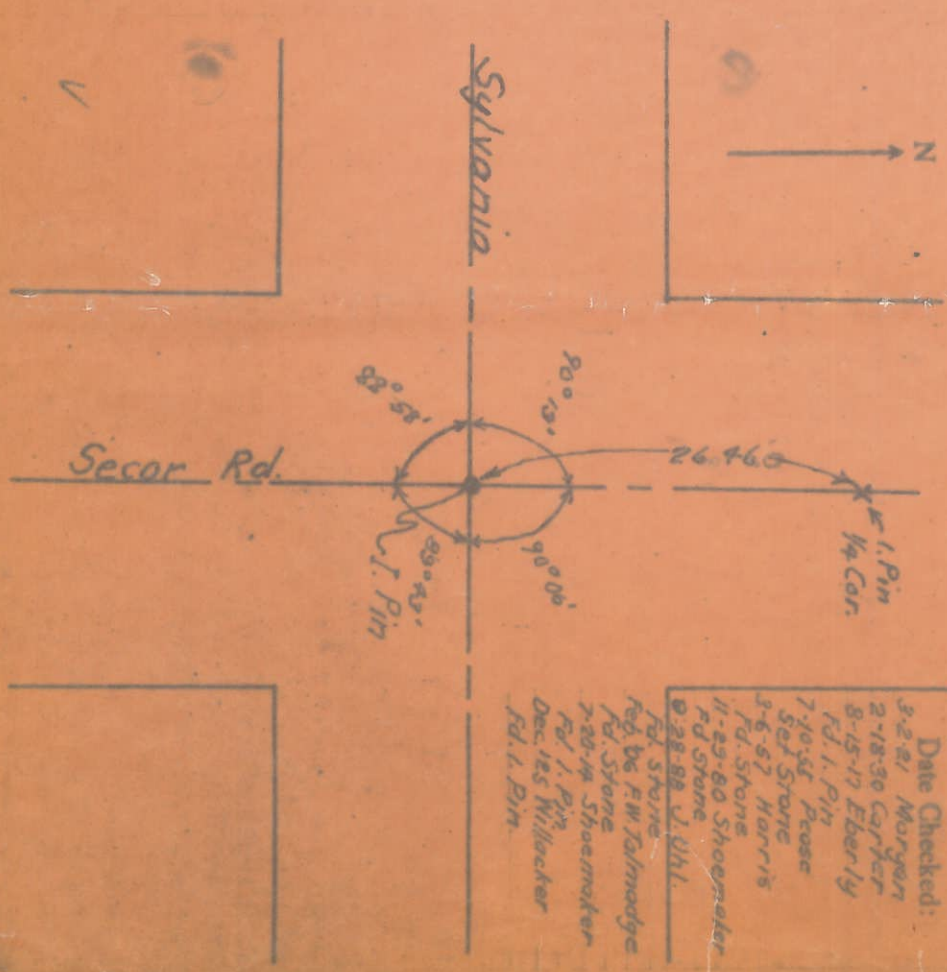
N. & S. Road Secor F. B. 334 P.

E. & W. Road Sylvania R. B. 220 P.

Date Checked:

- 3-2-21 Morgan
- 2-18-30 Carper
- 8-15-17 Eberly
- Fd. 1. Pin
- 7-10-54 Pease
- Set Stone
- 3-6-57 Harris
- Fd. Stone
- 11-23-60 Shoemaker
- Rd Stone
- 2-28-82 J. Uhl.

- Fd. Stone
- Feb. 06 F.W. Talmadge
- Fd. Stone
- 7-20-14 Shoemaker
- Fd. 1. Pin
- Dec. 185 Willacker
- Fd. 1. Pin



PERSONNEL TITLE PERSONNEL TITLE

COUNTY LUCAS DATE 3-19-59

S. R. U.S. #223 WEATHER

SEC. MONROE ST. TEMP.

MONUMENTS

DESCRIPTION LEFT CENTER LINE RIGHT JOB NO.

STA. 183plus35.87	FLANDERS RD.	BRASS PLATE
STA. 196plus69.93		BRASS PLATE
STA. 211plus58.08 <sup>0.8</sup>	TALMADGE RD.	BRASS PLATE
STA. 232plus28.83	P.C.	BRASS PLATE
STA. 234plus72.94	P.I.	Cross in Conc.
STA. 237plus16.21	P.T.	BRASS PLATE
STA. 251plus79.91	HARVEST LANE	Iron Rod in Conc.
STA. 270plus14.44	SYLVANIA AVE.	Hole In Conc. MON.
STA. 283plus55.65	SECOR RD.	ADJ. BRASS MON.