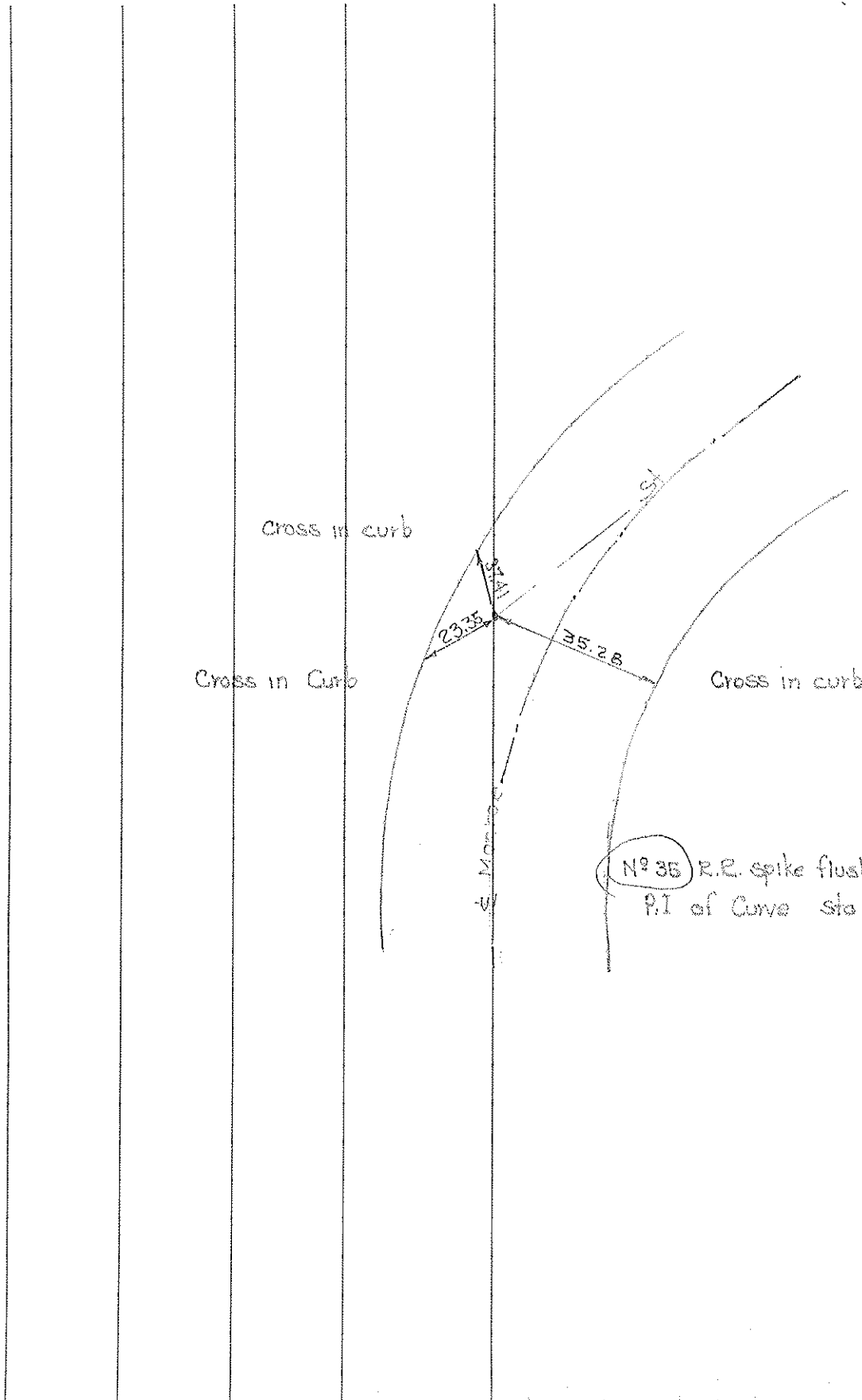


PERSONNEL	TITLE	PERSONNEL	TITLE	COUNTY	DATE
Denno				Lucas	June 2, 1966
Curtis				S. R. US 223	WEATHER
Granata				SEC.	TEMP.
Oney					
DESCRIPTION	Monument Ref Monroe St				JOB NO.



Town 95 Range 7E

Road Corner of Sections 18

Kind of Monument Drass Plate Remarks

P.C. of Curve

FOUND 1931 BY Wilson (State Highway)

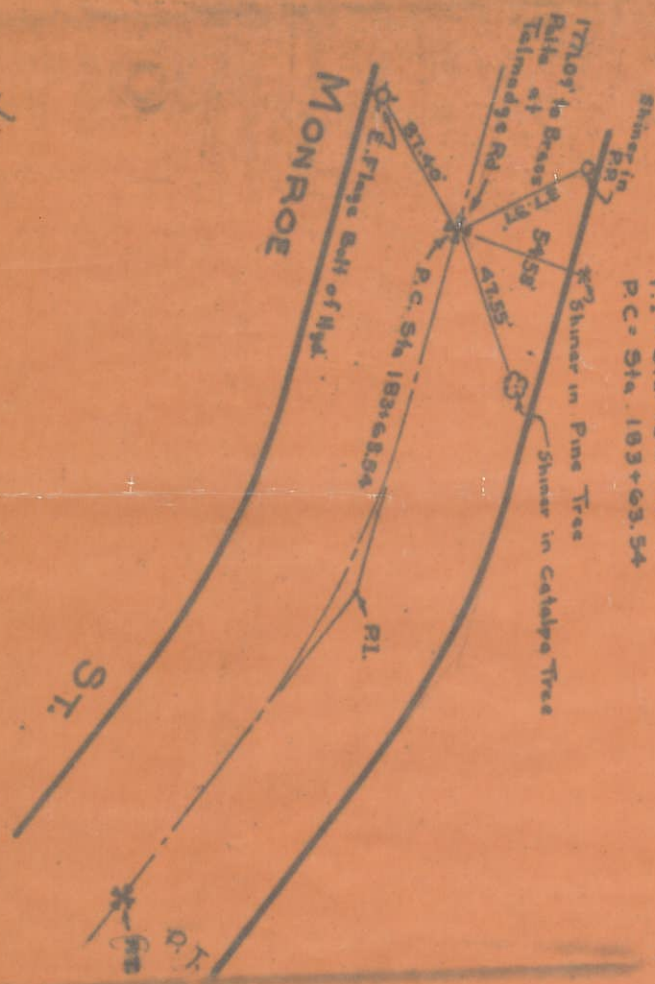
N. & S. Road TALMADGE RD F. B. 454 P. P.

E. & W. Road MONROE ST F. B. Sta. 103+63.54 P. Survey by Wilson 1931

Date Checked:

N CURVE DATA

$\Delta = 7^{\circ}-18'-35''$   
 $D = 1^{\circ}-30'-06''$   
 $T = 243.95'$   
 $R = 3819.26'$   
 $L = 481.28'$   
 $P.I. = Sta. 106+07.49$   
 $P.C. = Sta. 103+63.54$



Town 95 Range 7E

Road Corner of Sections 18

Kind of Monument I. Pin Remarks

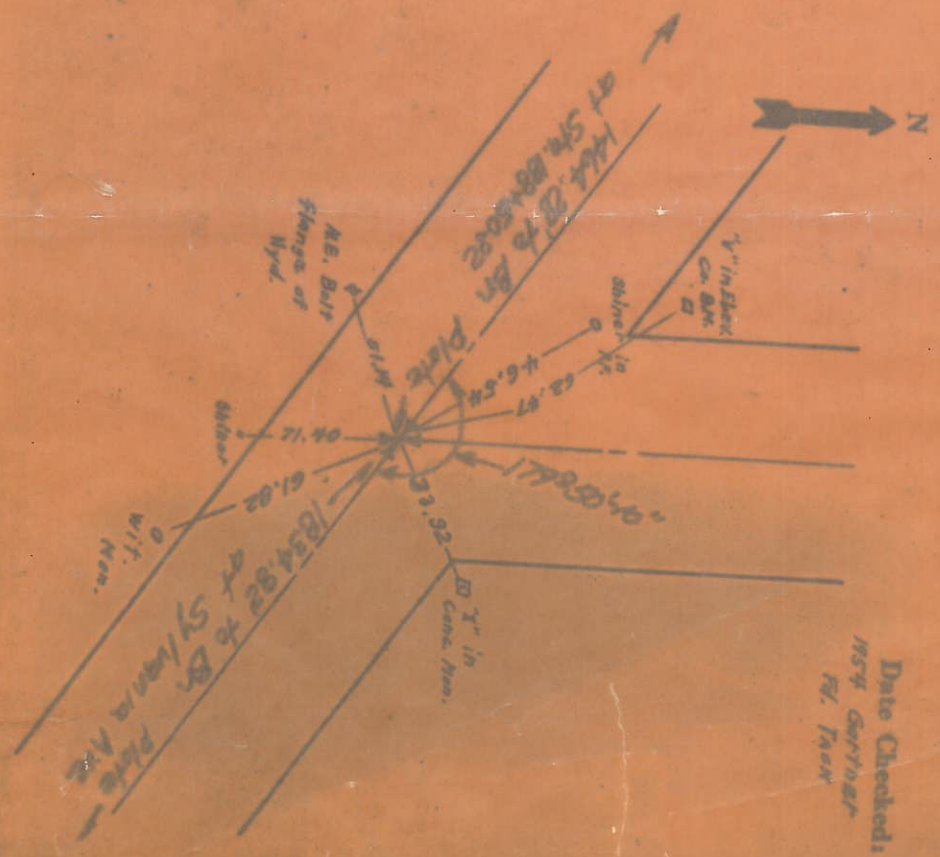
Tack of surface

FOUND 1931 BY State (Wilson)

N. ~~W.~~ Road Harvest Lane F. B. Stale P.

E. & W. Road Menroe St. F. B. Sta. 203+15.10 P. P.

Date Checked:  
 1934 Gardner  
 R. T. Tamm



Town 9S Range 7E ①

Rd. Corner of Sections 13

Kind of Monument BRASS PINS Remarks

P.T. OF CURVE

FOUND BY STATE

N. & S. Road TALMADGE RD. F. B. #54 P.

E. & W. Road MONROE ST. F. B. State  
Sta. 188+50.82 Av Survey by Wilson  
1931

N CURVE DATA: Date Checked:

$\Delta = 70^{\circ}-18'35''$   
 $D = 1^{\circ}30'06''$   
 $T = 243.95$   
 $R = 3819.26$   
 $L = 487.28$   
P.I. STA. 186+407.49  
P.T. = STA. 188+50.82

