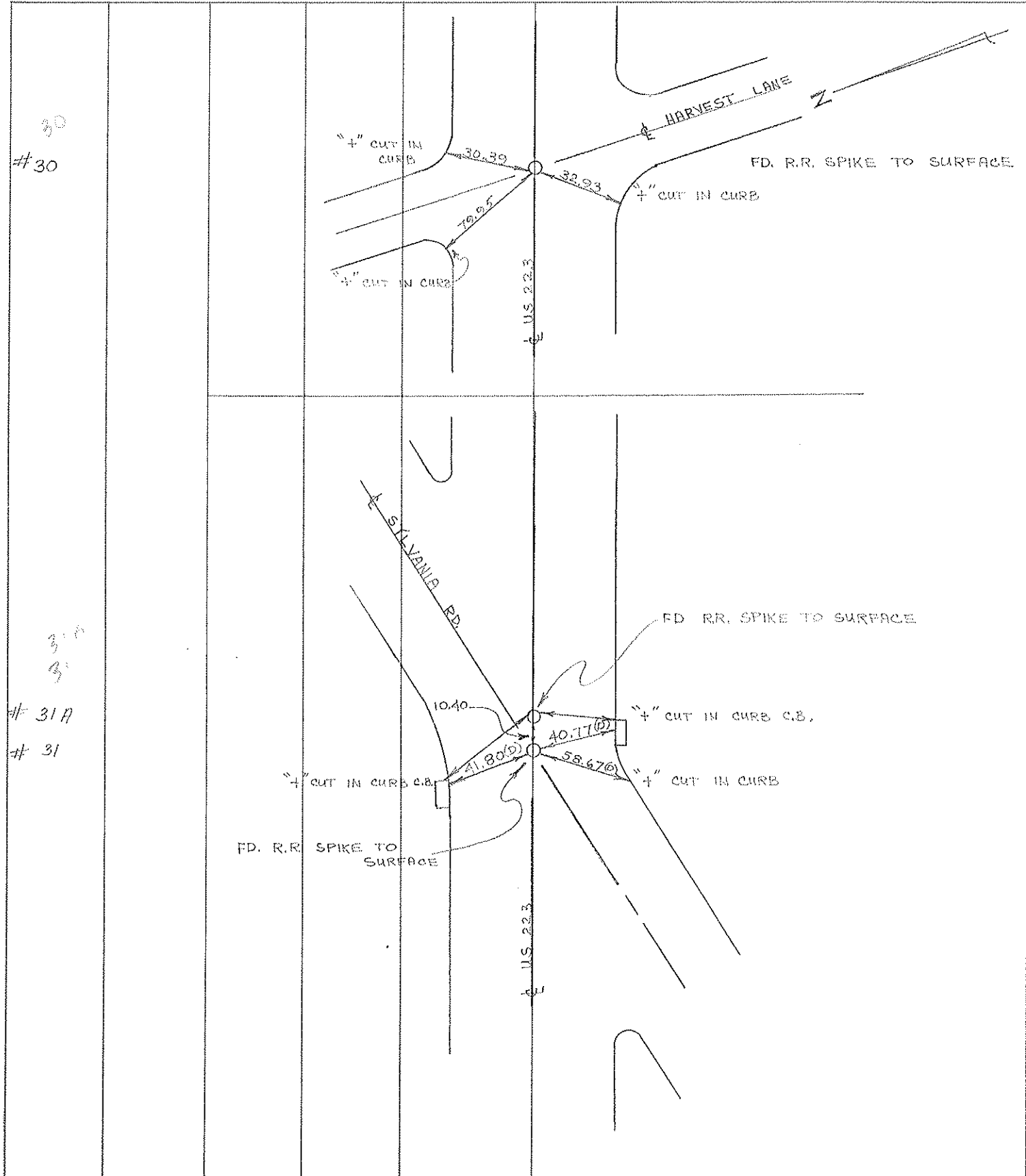


PERSONNEL	TITLE	PERSONNEL	TITLE	COUNTY	DATE
W. DENNO				LUCAS	7 SEPT. 71
D. CURTIS				S. R. U.S. 223	WEATHER FAIR
D. STEVENS				SEC. TOLEDO	TEMP. 75 ±
R. BRANNAN					

DESCRIPTION	REFERENCES TO CONTROL POINTS	JOB NO.
	LEFT CENTER LINE RIGHT	

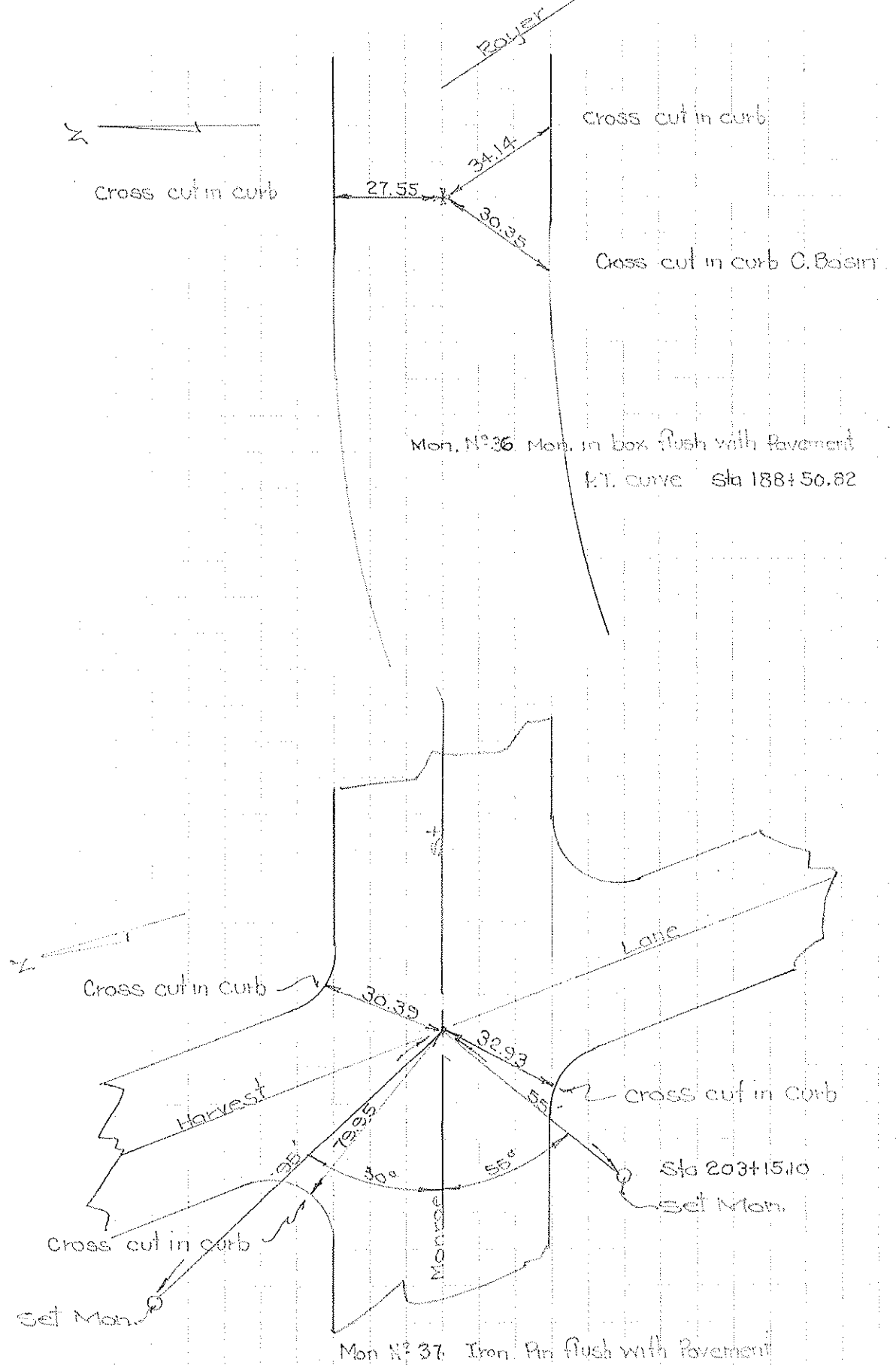


#30

#31A
#31

COMPUTATION SHEET

STATE OF OHIO - DEPARTMENT OF HIGHWAYS - BUREAU OF LOCATION AND DESIGN COLUMBUS, OHIO
 BY Donna - Granada - Curtis - Ormy DATE June 2, 1966 NO. OF SHEETS
 COUNTY Lucas SECTION
 DIV. NO. S.R. U.S.R. I. R.
 SUBJECT OF THIS SHEET Ref. monuments Monroe St. ^{PC}



PERSONNEL	TITLE	PERSONNEL	TITLE	COUNTY	Lucas	DATE	7 Mar. 62
Slope		BURDICK		S. R.	223	WEATHER	Mild
		CHAPMAN		SEC.		TEMP.	35°
Quarry		ADDRESS		DESCRIPTION	References to Control Pts.		JOB NO. 02263
Blair					LEFT	CENTER LINE	RIGHT

251479.91 - E Harvest Lane (Set ~~PK~~ ^{R.R. SPIKE} Nail) Δ = 0° 09' 41"

95.19'	N.W.	To Shiner in B	NOTE: THIS POINT HAS DUG UP & Fd. 10" below SURFACE
95.76'			
99.15'	N.E.	To Shiner in B	
34.07'			
91.29'	S.W.	To Shiner in B	
41.30'			

263466.28 - E Willis Blvd. (Set PK Nail) Δ = 0° 00'

48.35'	N.E.	To Shiner in B
62.45'	N.	To Tack & Hub in Medium
80.56'	S.E.	To Shiner in B

270414.44 - E Sylvania Ave (Set ~~PK~~ ^{R.R. SPIKE} Nail) Δ = 0° 00'

41.80	NORTH	To "X" in C.B. CASTING
54.62	N.E.	To "X" in C.V.B.
40.77	South	To "X" in C.B. CASTING
58.67	S.W.	To "X" in CURB

Town 95 Range 7E

Road Corner of Sections 18

Kind of Monument Drass Plate Remarks

P.C. of Curve

FOUND 1931 BY Wilson (State Highway)

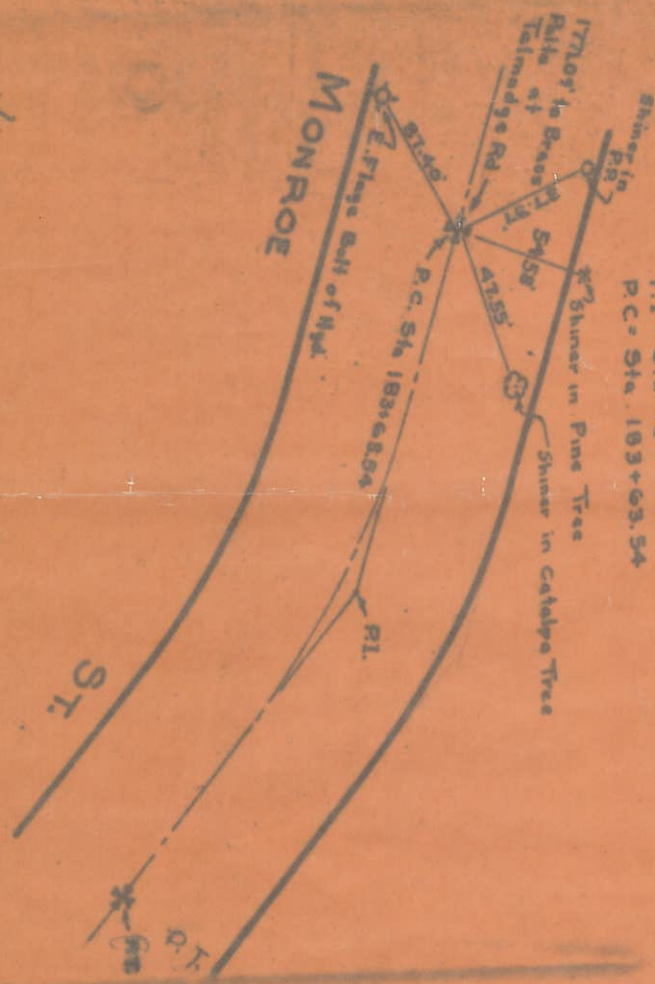
N. & S. Road TALMADGE RD F. B. 454 P.

E. & W. Road MONROE ST F. B. Sta. 103+63.54 P.

Date Checked: 1931

N CURVE DATA

$\Delta = 7^{\circ}-18'-35''$
 $D = 1^{\circ}-30'-06''$
 $T = 243.95'$
 $R = 3819.26'$
 $L = 481.28'$
 $P.I. = Sta. 106+07.49$
 $P.C. = Sta. 103+63.54$



Town 95 Range 7E

Road Corner of Sections 18

Kind of Monument I. Pin Remarks

Tack of surface

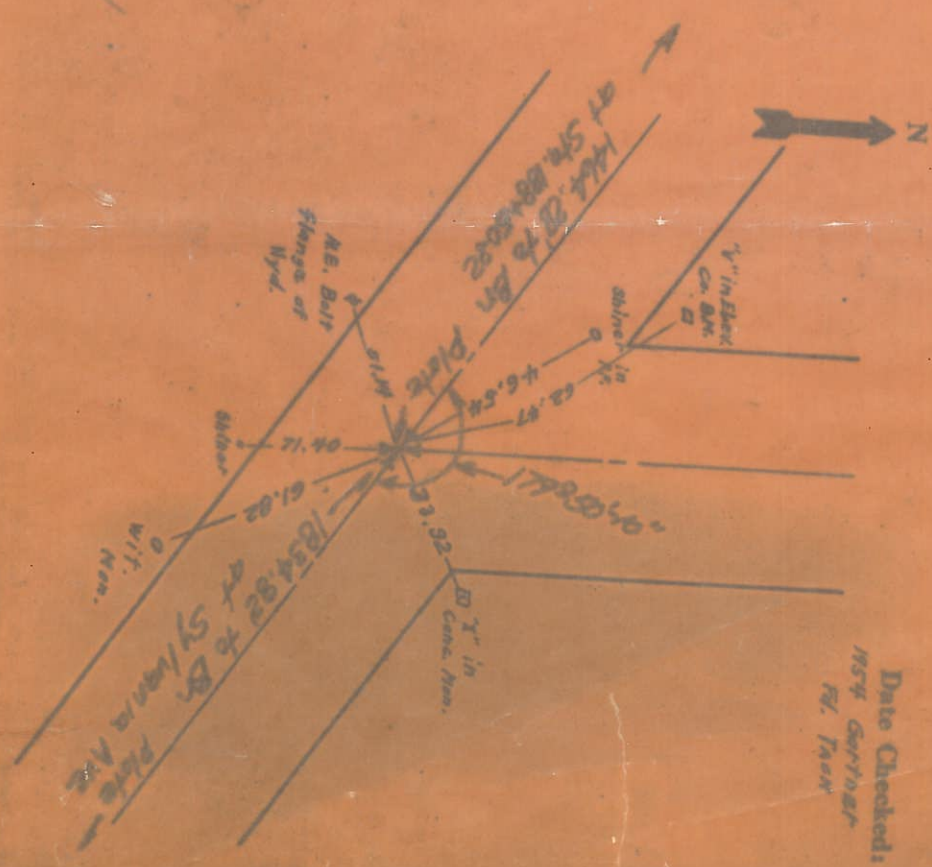
FOUND 1931 BY State (Wilson)

N. ~~W.~~ Road Harvest Lane F. B. Stale P.

E. & W. Road Menroe St. F. B. Sta. 203+15.10 P.

Date Checked: 1931

1931 Garth
Pl. Tack



Town 95 Range 7E

1/4 Corner of Sections 18-19

Kind of Monument Pin at surface Remarks

FOUND

3-18-54 BY Gartner

N. & S. Road N. & S. Rd. Sec. 18-19 F. B. P.

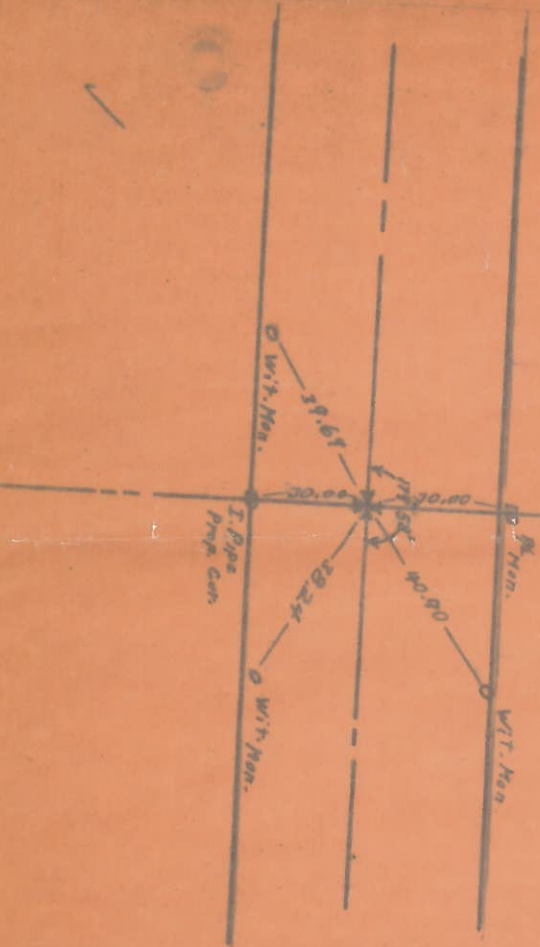
E. & W. Road Sylvania Ave. F. B. P.

Date Checked:

106 F.W. Talmadge
1st Stone



Harvest Lane



(6)

Town 95 Range 7E

W Corner of Sections 18-19

Kind of Monument Co. Mon. Remarks Brass

Plate at center

FOUND

July 3, 1958 BY Limbo

N. & S. Road Talmadge F. B. P.

E. & W. Road Sylvania F. B. P.

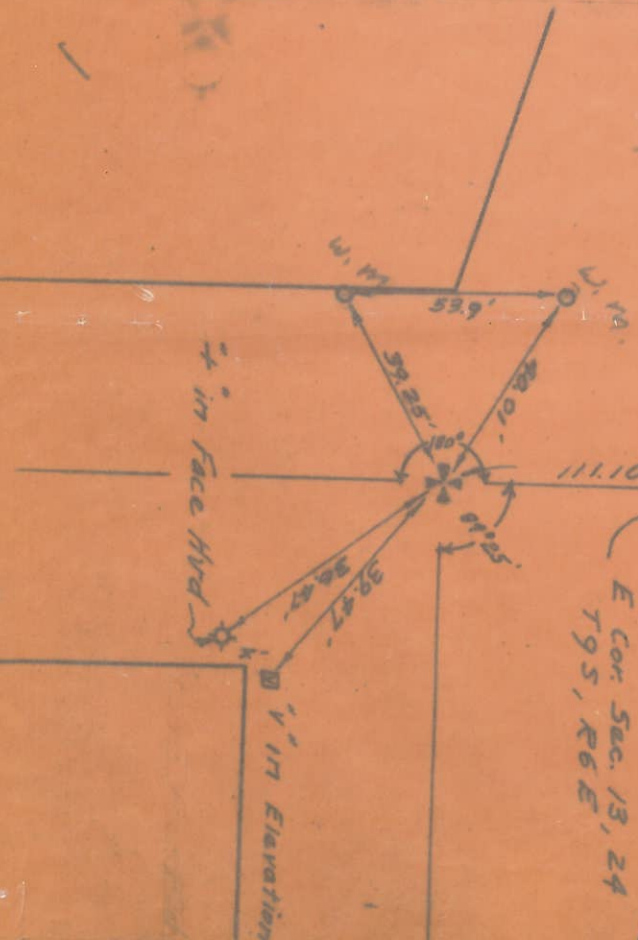
Date Checked:

4-26-21 CHW
9-9-37 C. Bollman



Br. Plate

E. Cor. Sec. 13, 24
T95, R6E



(7)

PERSONNEL TITLE PERSONNEL TITLE

COUNTY LUCAS DATE 3-19-59

S. R. U.S. #223 WEATHER _____

SEC. MONROE ST. TEMP. _____

MONUMENTS

DESCRIPTION LEFT CENTER LINE RIGHT JOB NO.

STA. 183plus35.87	FLANDERS RD.	BRASS PLATE
STA. 196plus69.93		BRASS PLATE
STA. 211plus58.08 ⁰⁸	TALMADGE RD.	BRASS PLATE
STA. 232plus28.83	P.C.	BRASS PLATE
STA. 234plus72.94 ⁹⁴	P.I.	Cross in Conc.
STA. 237plus16.21	P.T.	BRASS PLATE
STA. 251plus79.91	HARVEST LANE	Iron Rod in Conc.
STA. 270plus14.44	SYLVANIA AVE.	Hole In Conc. MON.
STA. 283plus55.65	SECOR RD.	ADJ. BRASS MON.