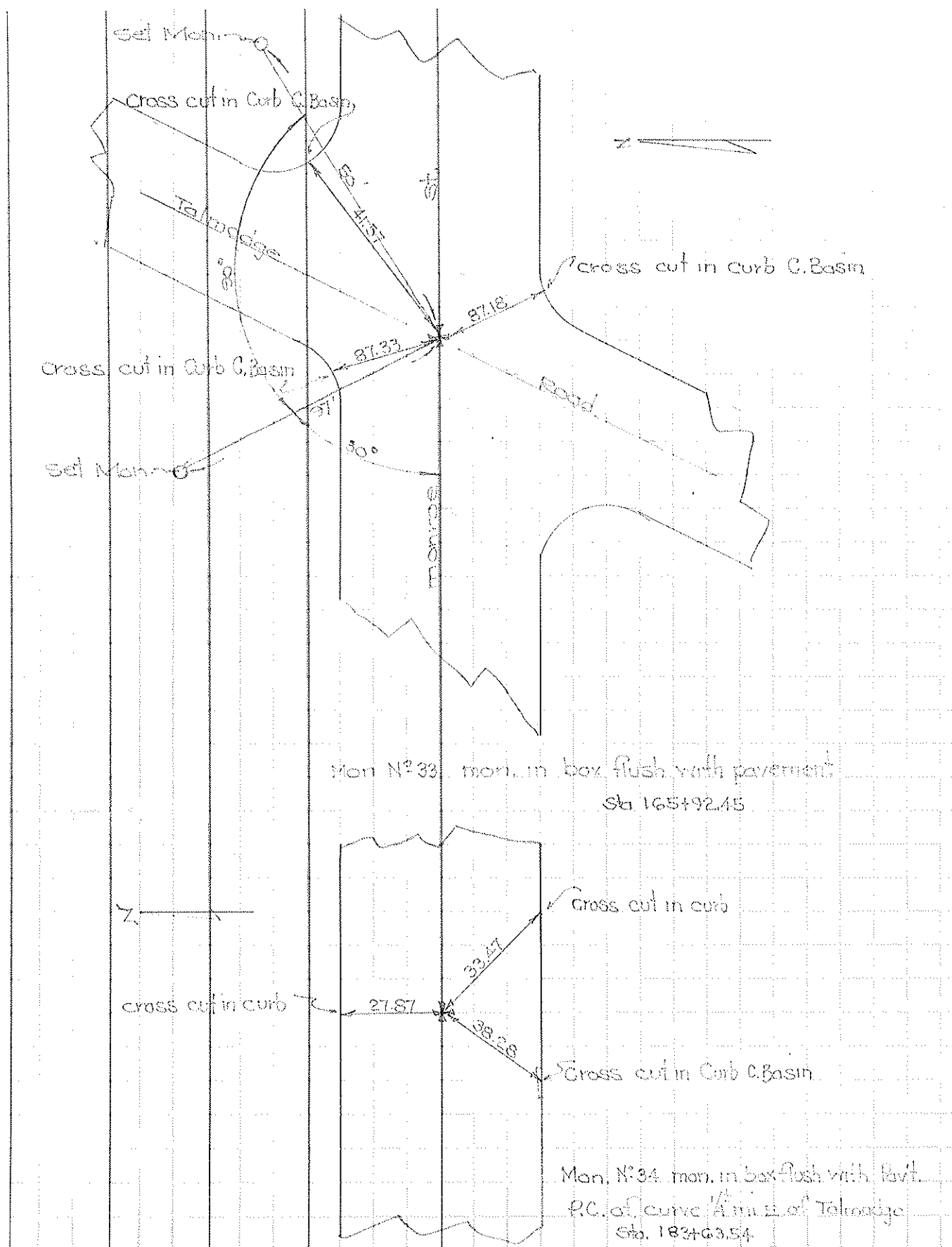


PERSONNEL	TITLE	PERSONNEL	TITLE	COUNTY	DATE	WEATHER	TEMP.
Denno				Lucas	June 2, 1966	Sunny	50°
Curtis				S. R. 156.273			
Granata							
Oney				SEC.			

DESCRIPTION Ref. monument's Monno 11 JOB NO. _____



PERSONNEL	TITLE	PERSONNEL	TITLE	COUNTY	Lucas	DATE	7 Mar. 62
Stone				S. R.	223	WEATHER	Mild
				SEC.		TEMP.	33°
DESCRIPTION	References to Control Pts.			JOB NO.	02263		
	LEFT	CENTER LINE	RIGHT				

172+12.90-	E	Sadalia	(Set PK Nail)	$\Delta = 0^{\circ} 00'$
69.16'	S.E.	to N.W. Cor. Step to Appliance Stone		
66.89'	S.W.	to N.E. Cor. 1st. Cor. Block to T.V. Repair Hut.		
66.87'	N.W.	to skinner in Φ		
179+52.35-	E	Staterville	(Set PK Nail)	$\Delta = 0^{\circ} 00'$
72.86'	N.W.	to skinner in Φ		
49.49'	S.W.	to skinner in 8" E. Green Tree		
43.75'	S.E.	to skinner in 10" E. Green Tree		
183+35.87-	E	Flanders Rd.	(Set Monument)	$\Delta = 0^{\circ} 18' Rt.$
73.35'	S.W.	to skinner in 39' Oak		
57.44'	S.E.	to skinner in 17" Maple		
40.13'	N.E.	to skinner in Φ		
196+69.93-	P.I.	(Set Monument)		$\Delta = 0^{\circ} 18' Lt.$
65.99'	N.W.	to skinner in 16" Maple		
92.49'	N.E.	to skinner in Φ		
103.28'	S.W.	to skinner in Φ		
214+58.08-	E	Talwadge Rd.	(Set Monument)	$\Delta = 0^{\circ} 01' Rt.$
90.61'	S.W.	to 50' Rad. Pt.		
42.45'	N.E.	to skinner in Φ		
107.51'	N.W.	to skinner in Φ		

(10)

Town 95 Range 7E

Road Corner of Sections 19-20

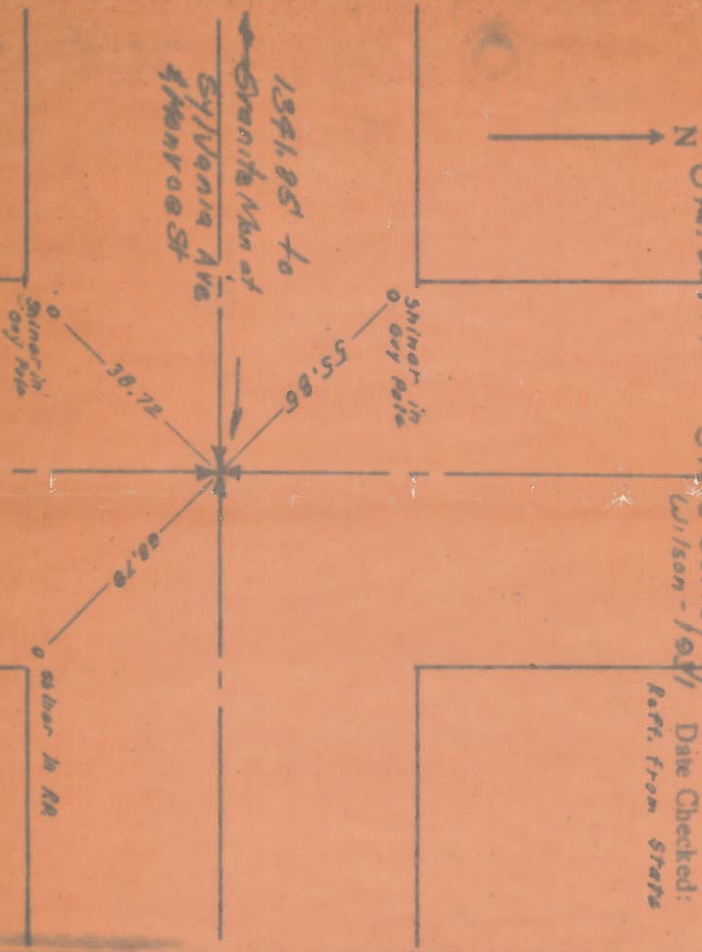
Kind of Monument 1 Pin Remarks

FOUND 12-16-24 BY C. H. Wilson

N. & S. Road Secor F. B. P.

E. & W. Road Morroe F. B. P.

Sta. 234+91 II State Survey by Wilson - 1921 Date Checked: Ref. from stars



(11)

Town 95 Range 6E

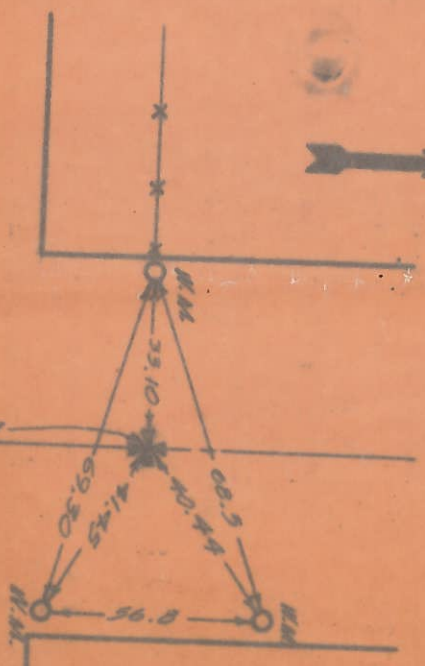
Corner of Sections 12-13

Kind of Monument Co. Mon Remarks 15' below

FOUND 10-27-52 BY Phillips

N. & S. Road Talmadge F. B. P.

E. & W. Road Laskey F. B. P.



Date Checked: 1948 Law
Ed. Pin
1950 H. Miller
H. Pin
1954 Guest

(16)

Town 95 Range 6E
W 16 Corner of Sections 13
Kind of Monument STONE Remarks

FOUND 7-13-45 BY C.H. WILSON
N. & S. Road VINEYARD Rd. F. B. P.
E. & W. Road THEODORE Rd. F. B. P.

Date Checked:
6-19-97 WEBSTER
FD STONE



Blue Prints:

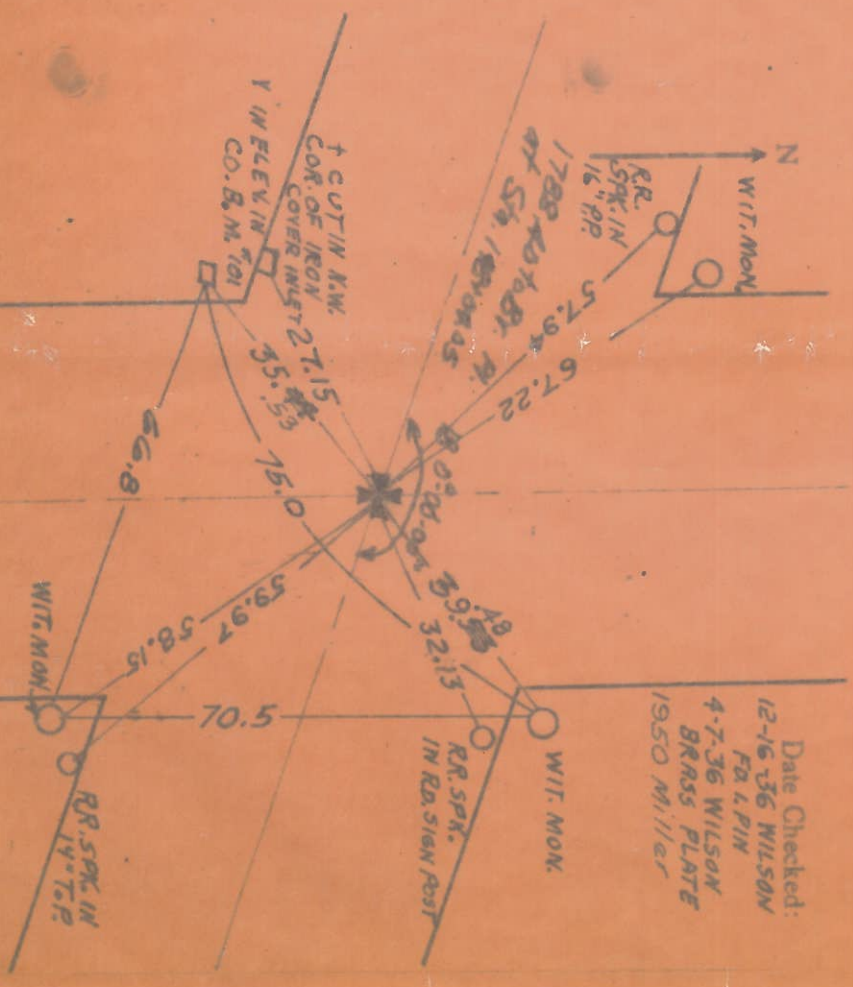
Checked By:

(17)

Town 95 Range 6E
E LINE Corner of Sections 13
Kind of Monument BR PLATE Remarks WITH HOLE
SET FLUSH WITH CONC. SURF.

FOUND SET 9-10-37 BY C. BOLLMAN
N. & S. Road TALMADGE Rd. F. B. P.
E. & W. Road MONROE ST. F. B. P.

Date Checked:
12-16-36 WILSON
FOR L. PIN
4-7-36 WILSON
BRASS PLATE
1950 Miller

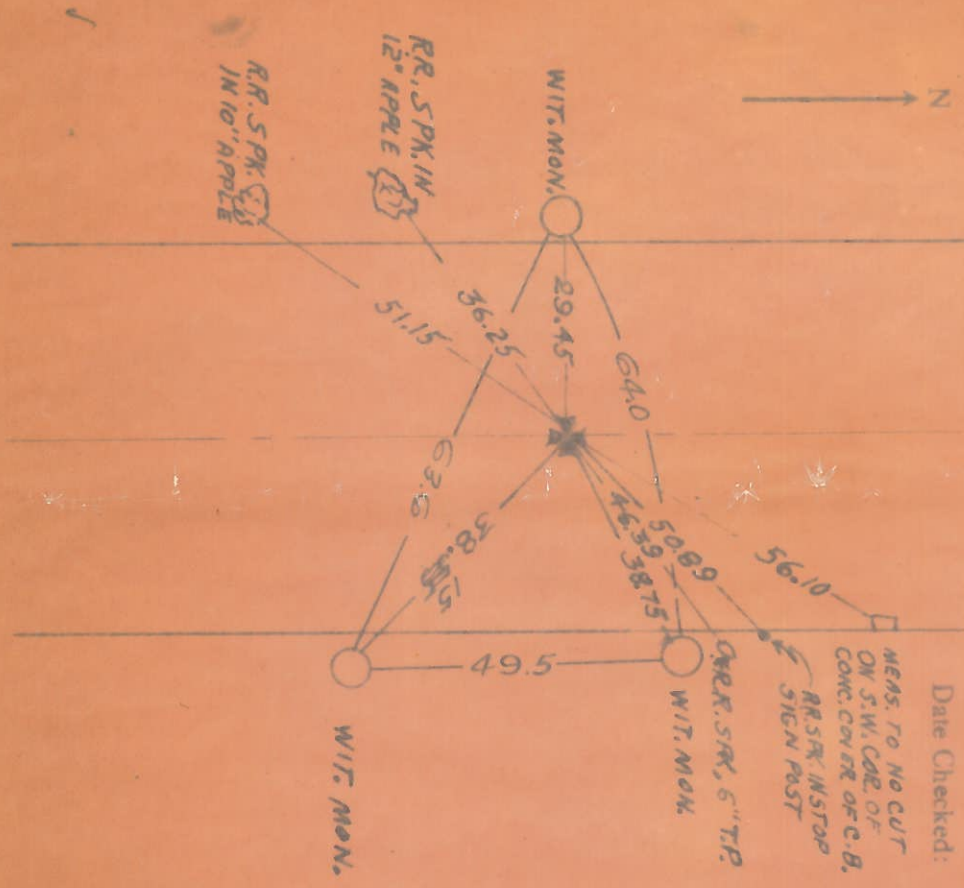


1 Town 95 Range 6E
E 1/4 Corner of Sections 13

Kind of Monument **BR. PLATE** Remarks **SET FLUSH**
WITH CONC. SURF.
FOUND SET 9-10-37 BY **C. BALLMAN**

N. & S. Road **TALMADGE RD.** F. B. P.
E. & W. Road **241935. of Monroe St F. B. P.**
~~800~~ S. OF **MONROE ST.**

Date Checked:



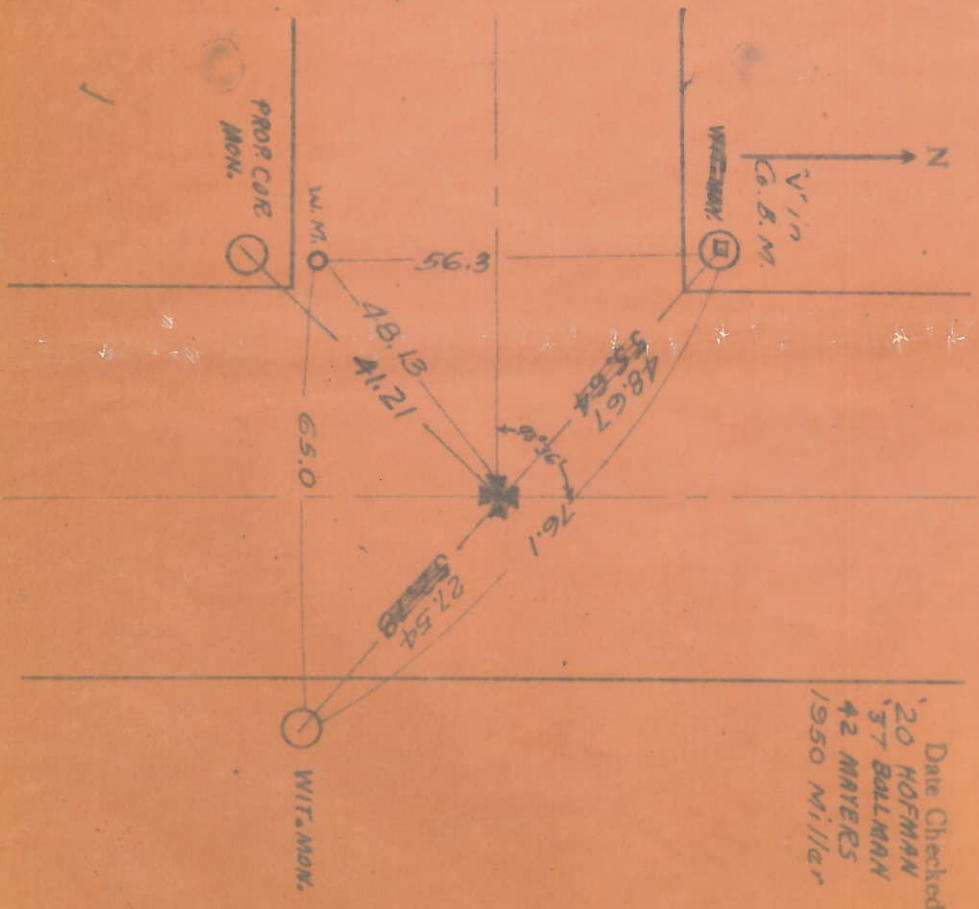
1 Town 95 Range 6E
1/4 Corner of Sections 13-14

Kind of Monument **STONE** Remarks
BOLT AT SURF SET 8-28-45
FOUND SET 8-28-45 BY **WILSON**

N. & S. Road **WHITEFORD RD.** F. B. P.
E. & W. Road **CHERRINGTON RD.** F. B. P.

Date Checked:

20 HOFFMAN
37 BALLMAN
42 MAYERS
1950 Miller



PERSONNEL TITLE PERSONNEL TITLE

COUNTY LUCAS DATE 3-19-59

S. R. U.S. #223 WEATHER _____

SEC. MONROE ST. TEMP. _____

MONUMENTS

DESCRIPTION LEFT CENTER LINE RIGHT JOB NO.

STA. 183plus35.87	FLANDERS RD.	BRASS PLATE
STA. 196plus69.93		BRASS PLATE
STA. 211plus58.08 ^{0.8}	TALMADGE RD.	BRASS PLATE
STA. 232plus28.83	P.C.	BRASS PLATE
STA. 234plus72.94	P.I.	Cross in Conc.
STA. 237plus16.21	P.T.	BRASS PLATE
STA. 251plus79.91	HARVEST LANE	Iron Rod in Conc.
STA. 270plus14.44	SYLVANIA AVE.	Hole In Conc. MON.
STA. 283plus55.65	SECOR RD.	ADJ. BRASS MON.