

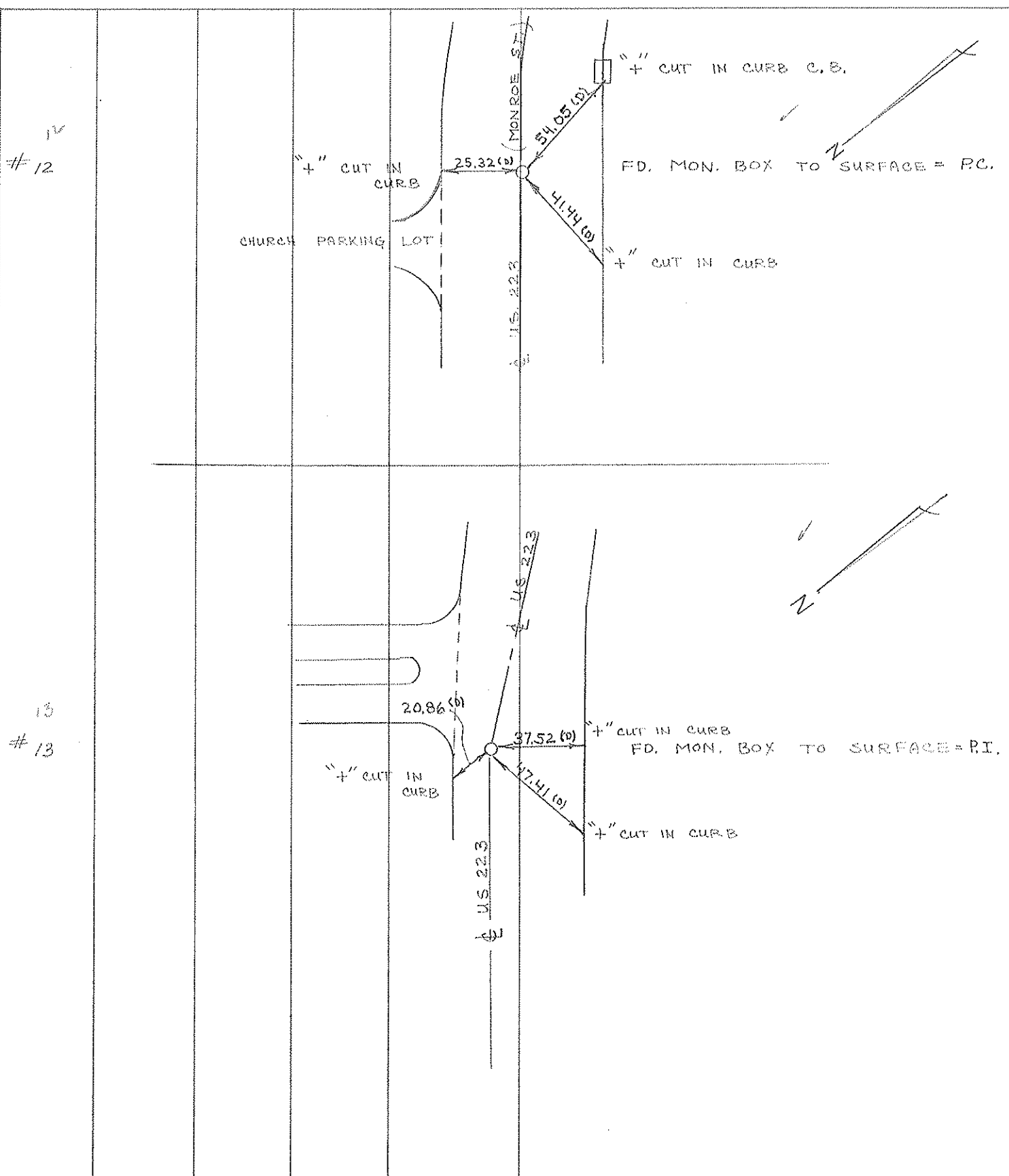
PERSONNEL	TITLE	PERSONNEL	TITLE
<u>W. DENNO</u>			
<u>D. CURTIS</u>			
<u>D. STEVENS</u>			

COUNTY LUCAS DATE 25 AUGUST 71

S. R. U.S. 223 WEATHER CLEAR

SEC. _____ TEMP. 70±

DESCRIPTION _____ REFERENCES TO CONTROL POINTS _____ JOB NO. _____



Town 9S Range 6E

Rd. Corner of Sections 11

Kind of Monument BRASS PLATE Remarks

.30 BELOW SURFACE

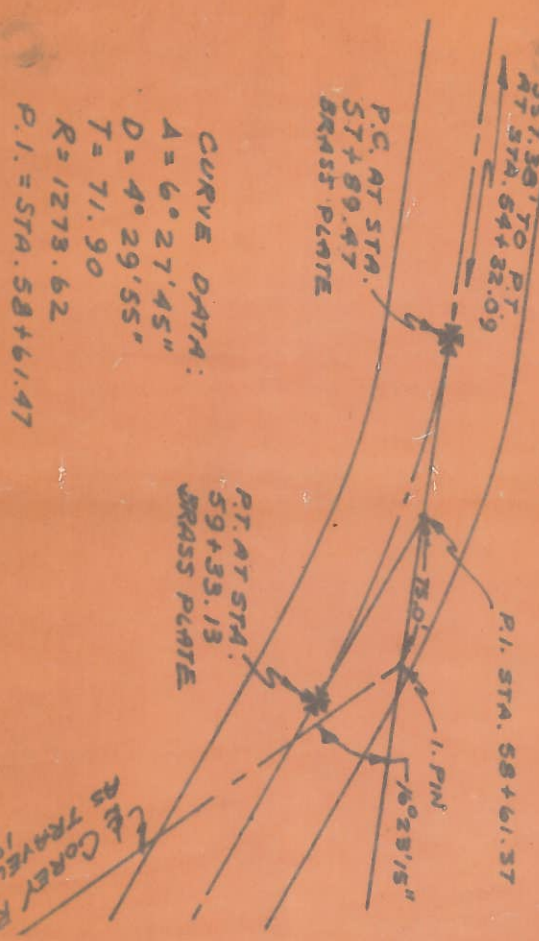
FOUND 1931 BY WILSON

~~FOUND~~ STA. 58 + 61.37 = P.I.F. B. P.

E. & W. Road MONROE ST. F. B. P.

PER SURVEY BY WILSON 1931 WITH STATE HIGHWAY FD. 2 BRASS PLATES

Date Checked:



CURVE DATA:
 A = 6° 27' 45"
 D = 4° 29' 55"
 T = 71.90
 R = 1273.62
 P.I. = STA. 58 + 61.47

Town 9S Range 6E

Rd. Corner of Sections 11

Kind of Monument BRASS PLATE Remarks

.30 BELOW SPK. AT SURFACE

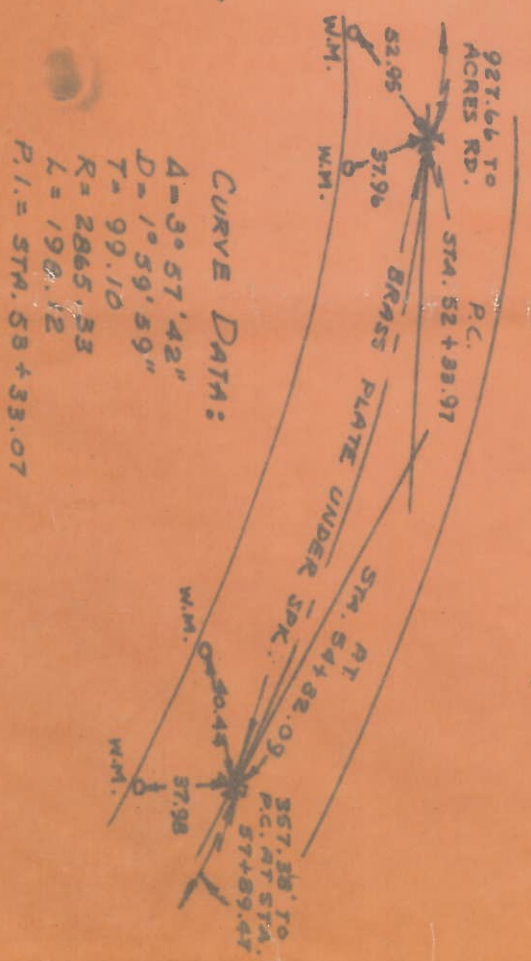
FOUND 1955 BY GALLEMORE

~~FOUND~~ APPROX. 950' E. OF ACRES RD. F. B. P.

E. & W. Road MONROE ST. F. B. P.

AS PER SURVEY BY WILSON 1931 WITH STATE HIGHWAY FD. 2 BRASS PLATES.

Date Checked:



CURVE DATA:
 A = 3° 57' 42"
 D = 1° 59' 59"
 T = 99.10
 R = 2865.33
 L = 190.12
 P.I. = STA. 58 + 33.07