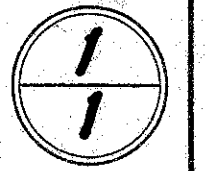
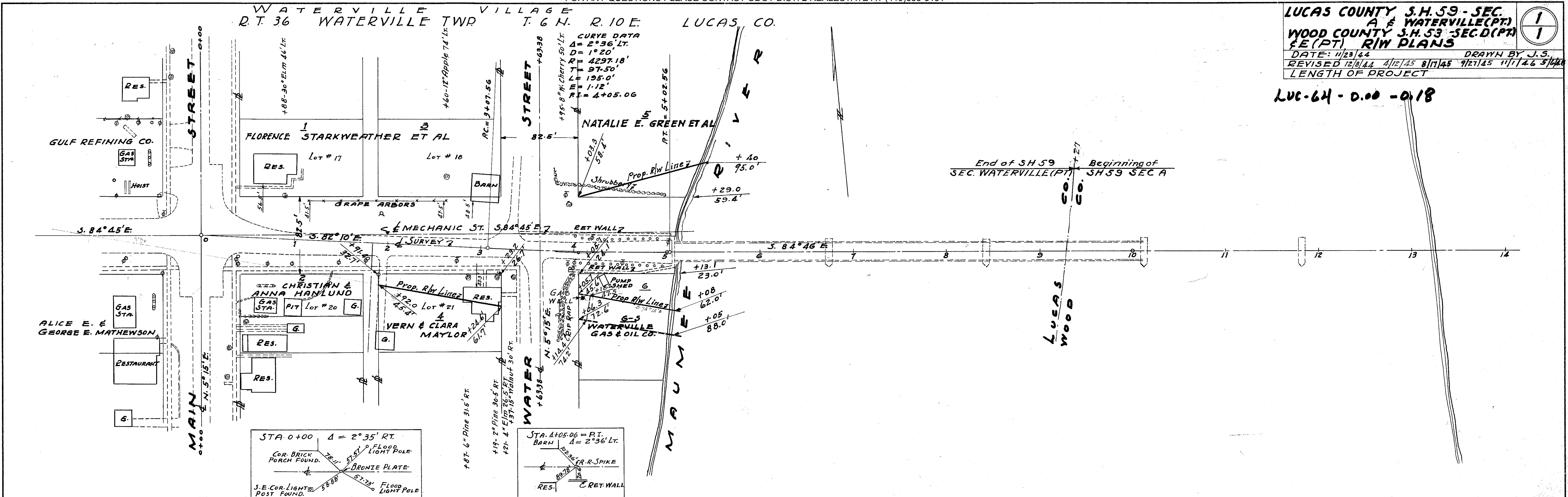


LUCAS COUNTY S.H. 59 - SEC. A & WATERVILLE (PT.)
 WOOD COUNTY S.H. 53 - SEC. D (PT.)
 E.E. (PT) R/W PLANS
 DATE: 11/23/44 DRAWN BY J.S.
 REVISED 12/6/44 4/12/45 8/17/45 9/21/45 11/1/46 3/4/46
 LENGTH OF PROJECT

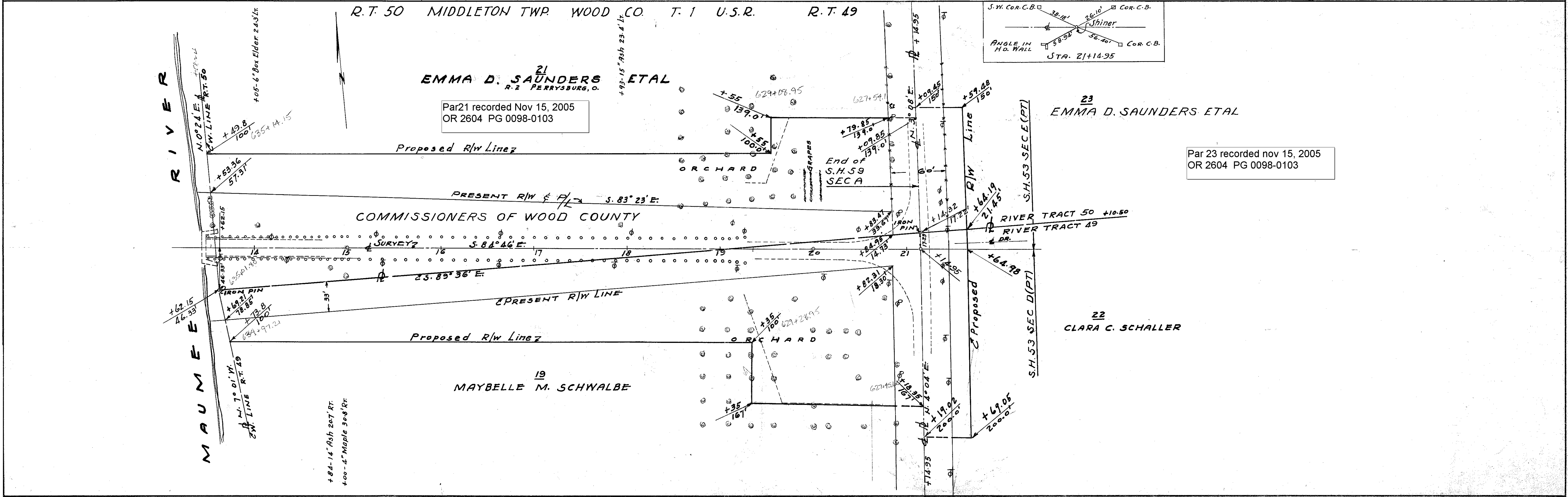


LUC-64-0.00-0.18

Scanned
July 1997

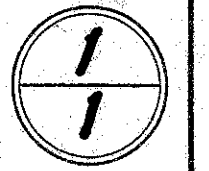


R3064
1
C-59



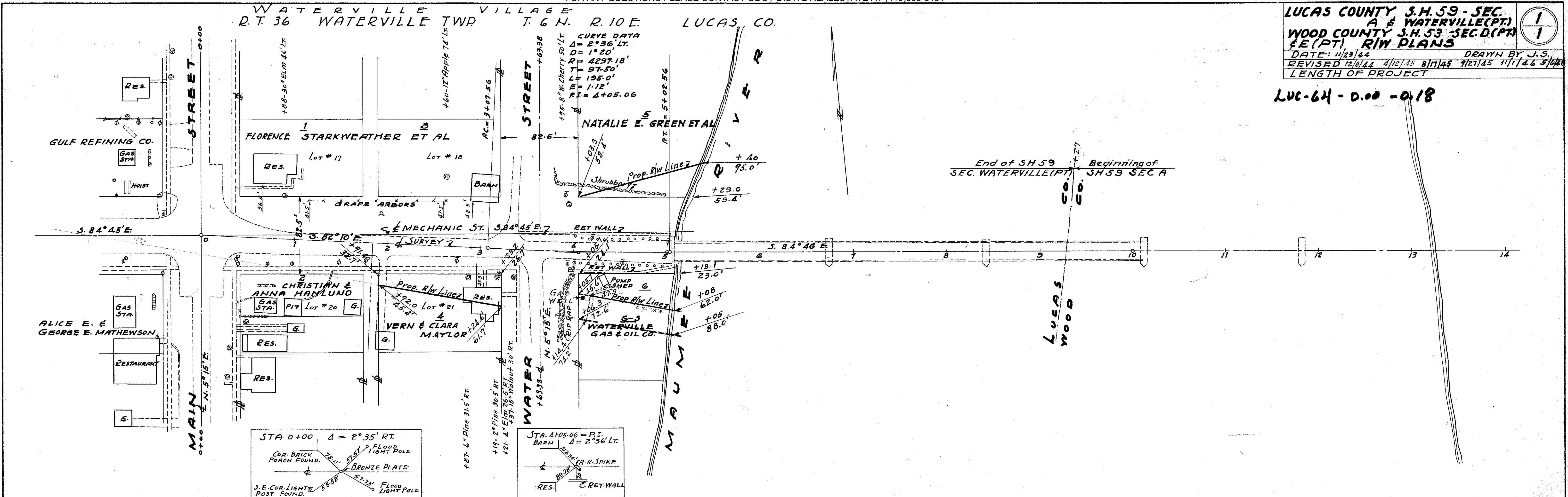
LUCAS COUNTY S.H. 59 - SEC. A & WATERVILLE (PT.)
WOOD COUNTY S.H. 53 - SEC. D (PT.)
E.E (PT) R/W PLANS

DATE: 11/23/44 DRAWN BY J.S.
 REVISED 12/6/44 4/12/45 8/17/45 9/21/45 11/1/46 3/4/46
 LENGTH OF PROJECT



LUC-64-0.00-0.18

Scanned
July 1997



R3064
1
C-59

