

O.D.O.T. DISTRICT 2 SURVEY OFFICE (USE ONLY)

PERSONNEL

REFERENCE NO. 1 A

SHEET 2 OF 5

NOTES O'DONNELL

DATE 12/11/20

ROUTE SR 64

H.C. _____

WEATHER _____

COUNTY LUCAS

R.C. _____

TEMP. _____

TOWNSHIP WATERVILLE

DWG BY RHOADES PID 92088

SECTION RT 36

T 6 N R 10 E

TYPE MONUMENT MONBOX W/1" IPIN

ON SURFACE - ~~BELOW~~ ON

OFFSET ℄ PAVEMENT ON _____ LT : RT

- TO - EDGE PAVEMENT

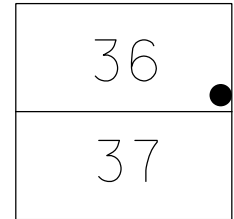
STATION: 6+23.12

HORIZ.DATUM: NAD 83 2011

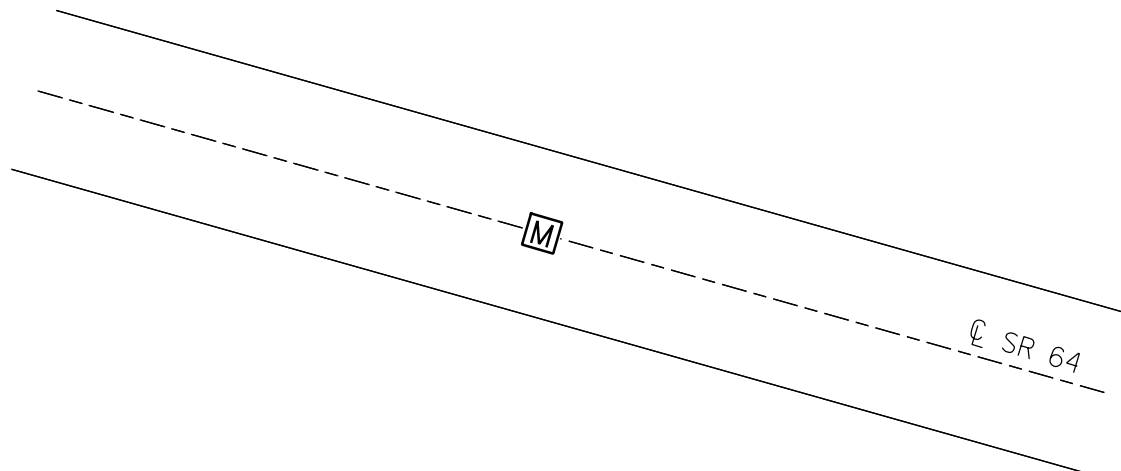
GEOID: 2018

GRID: NORTHING: 670350.165

EASTING: 1635437.232



RECORD: P.T.
STA.6+23.12
FD MONBOX
W/1" IPIN
NEWSTA623
12/11/20, JFO



O.D.O.T. DISTRICT 2 SURVEY OFFICE

PERSONNEL

REFERENCE NO. 181A

SHEET 1 OF 47

NOTES ROUSOS

DATE 5-21-02

ROUTE S.R. 64

H.C. HOMAN

WEATHER CLOUDY

COUNTY LUCAS

R.C. MICHALAK

TEMP. 50

TOWNSHIP WATERVILLE

SECTION _____

T___ R___

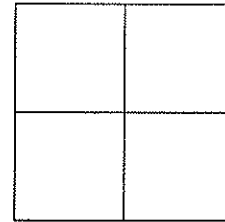
TYPE MONUMENT SM. R.R. SPIKES

ON SURFACE - ~~BELOW~~ YES

LEFT - Q PAV'T - ~~RIGHT~~ 2.0'

10' TO LT. EDGE PAVEMENT

S.L.M. 219+12



RECORD:
377.52' TO R.R. SPIKE
@ INTERSECTION
FROM P.I. CONST.

SET PK
NAIL &
WASHER
8-7-02
D.C.H.

WATERVILLE

Q PAVT
S.R. 64

Const. P.I.

R/W P.I.

-27.75-

+/- 103.3 (REC.)

WEST ABUTMENT

MAUMEE RIVER

FD N&S
NE/S

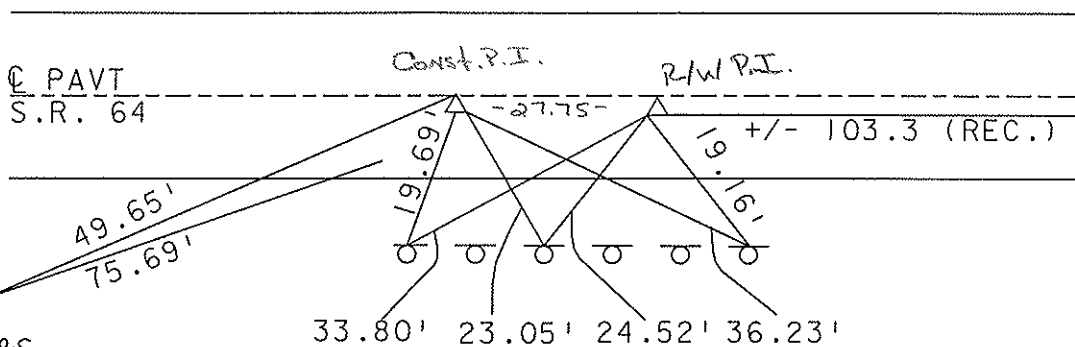
49.65'
75.69'

19.69'

19.16'

33.80' 23.05' 24.52' 36.23'

SET N&S
IN 1ST, 3RD
& 6TH GUARD
RAIL POSTS



Resurfaced 2002

O.D.O.T. DISTRICT 2 SURVEY OFFICE

PERSONNEL

REFERENCE NO. 141A

SHEET 1 OF 1

NOTES LOEHRKE

H.C. CURDES

R.C. LOEHRKE

DATE 5-9-97

WEATHER RAIN

TEMP. +52

ROUTE S.R. 64

COUNTY LUCAS

TOWNSHIP WATERVILLE

SECTION _____

T _____ R _____

Set P.K. / WASHERS

TYPE MONUMENT Fd 3m R.R. SPIKES

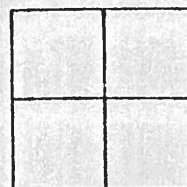
ON SURFACE - ~~BELOW~~ Yes

LEFT - C PAV'T. - RIGHT R/W 2.0 CONST 12

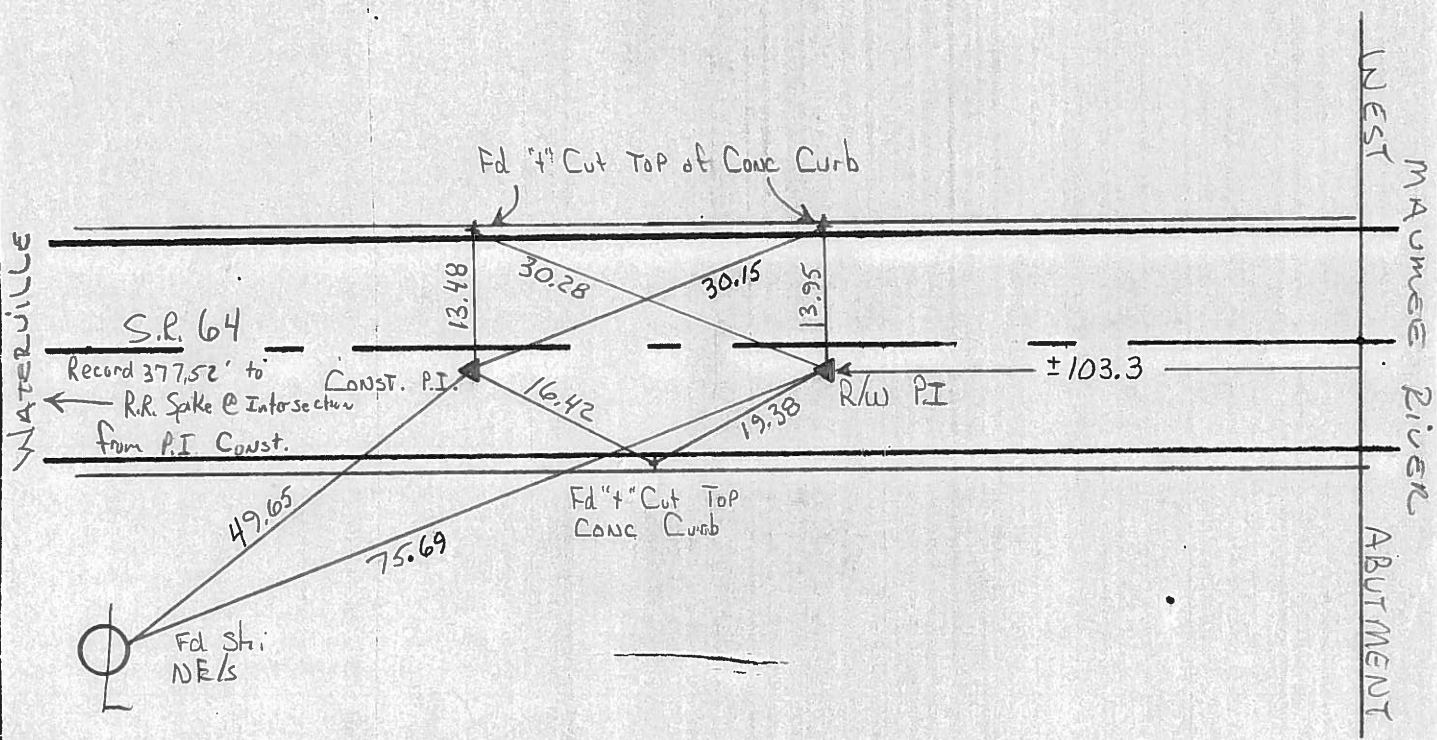
± 10' TO Lt EDGE PAVEMENT

S.L.M. R/W = 5 + 22.5

5-9-97
Resurfaced
APPROACH
TO BRIDGE



RECORD: CONSTRUCTION P.I. Sta 3+77.50
1946



O.D.O.T. DISTRICT 2 SURVEY OFFICE

PERSONNEL _____

REFERENCE NO. 141A

SHEET _____ OF _____

NOTES Hoffman

H.C. LOSHKUS

R.C. BARNHISEL

DATE 7-9-86

WEATHER Lt. Rain

TEMP. 75°

ROUTE 64

COUNTY Lucas

TOWNSHIP Waterwillow

SECTION _____

T _____ R _____

const P.I. / r/w P.I. (Believed to be)

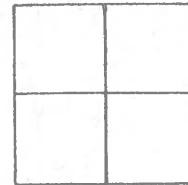
TYPE MONUMENT stail-shiner / small Nail - Fd - set by OTHERS

ON SURFACE - ~~BELOW~~ yes / yes

LEFT- & PAV'T. - ~~RIGHT~~ 1.1' / 1.4'

- TO - EDGE PAVEMENT

S.L.M. _____



Construction P.I. set by EXTENDING E of construction off of bridge & fitting the distances between face of west Abutment & the R.R. spike control point FOUND @ the intersection of River Road & SR64

1946 stationing for const. P.I. = 3+ 77.50

1986 SLM stationing =

SET SMALL RR SPIKE @ BOTH P.I.'s

10-20-88 SLM

