

O.D.O.T. DISTRICT 2 SURVEY OFFICE (USE ONLY)

PERSONNEL _____ REFERENCE NO. 2 SHEET 4 OF 5

NOTES ROUSOS DATE 4/18/02 ROUTE SR 64
 H.C. HOMAN WEATHER SUNNY COUNTY LUCAS
 R.C. ROUSOS TEMP. 60° TOWNSHIP WATERVILLE

SECTION RT 36
T 6 N R 10 E

DWG BY RHOADES PID 92088

TYPE MONUMENT LG.R.R.SPIKE

~~ON SURFACE~~ - BELOW 3"

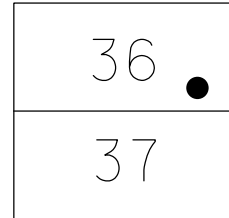
OFFSET \odot PAVEMENT ON LT : RT

- TO - EDGE PAVEMENT

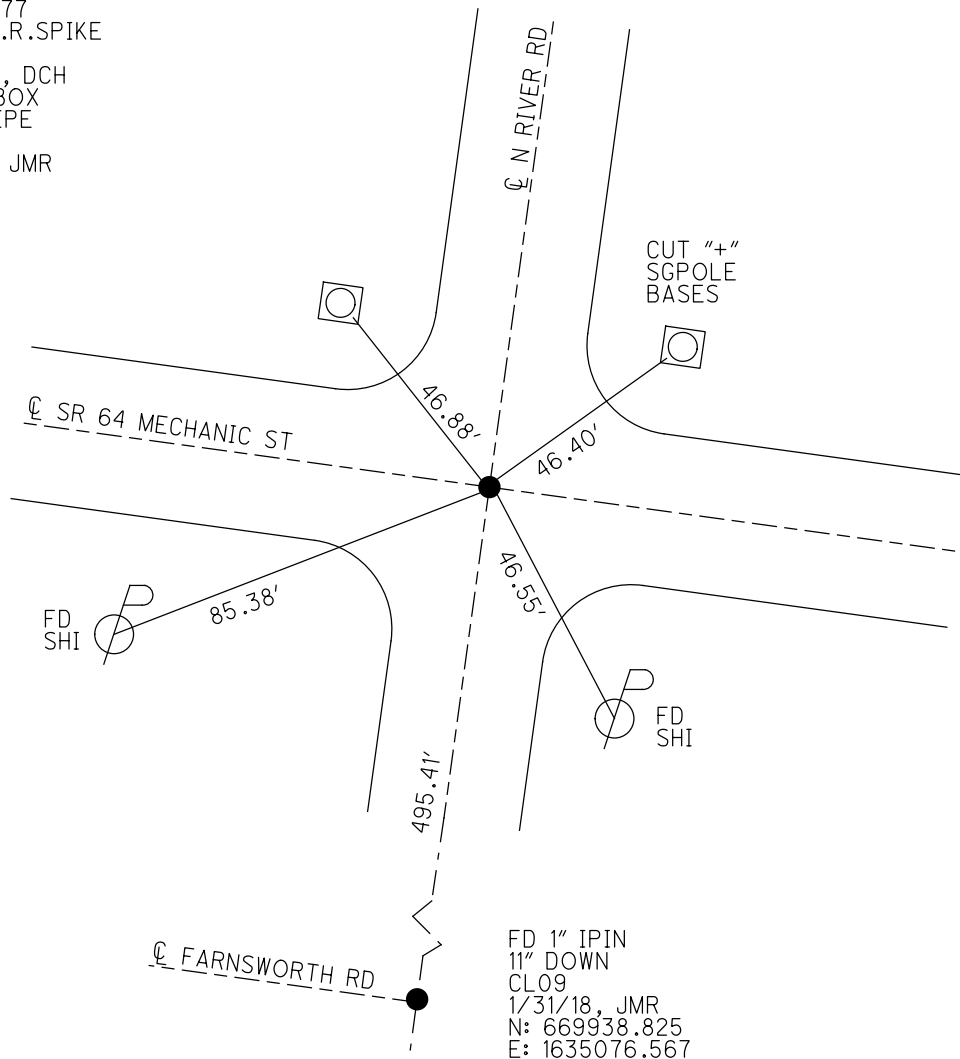
STATION: 9+27.00

HORZ.DATUM: NAD 83 2011 GEOID: 2018

GRID: NORTHING: 670431.292 EASTING: 1635130.607



RECORD:
 STA. 8+77
 FD LG.R.R.SPIKE
 3" DOWN
 4/18/02, DCH
 FD MONBOX
 W/3" IPIPE
 CL03
 1/31/18, JMR



O.D.O.T. DISTRICT 2 SURVEY OFFICE

PERSONNEL

REFERENCE NO. 2

SHEET 2 OF 47

NOTES ROUSOS

DATE 4-18-02

ROUTE S.R. 64

H.C. HOMAN

WEATHER SUNNY

COUNTY LUCAS

R.C. ROUSOS

TEMP. 60

TOWNSHIP WATERVILLE

SECTION _____

T ___ R ___

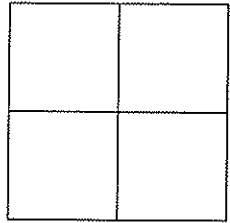
TYPE MONUMENT LRG RR SPIKE

~~ON SURFACE~~ - BELOW 3"

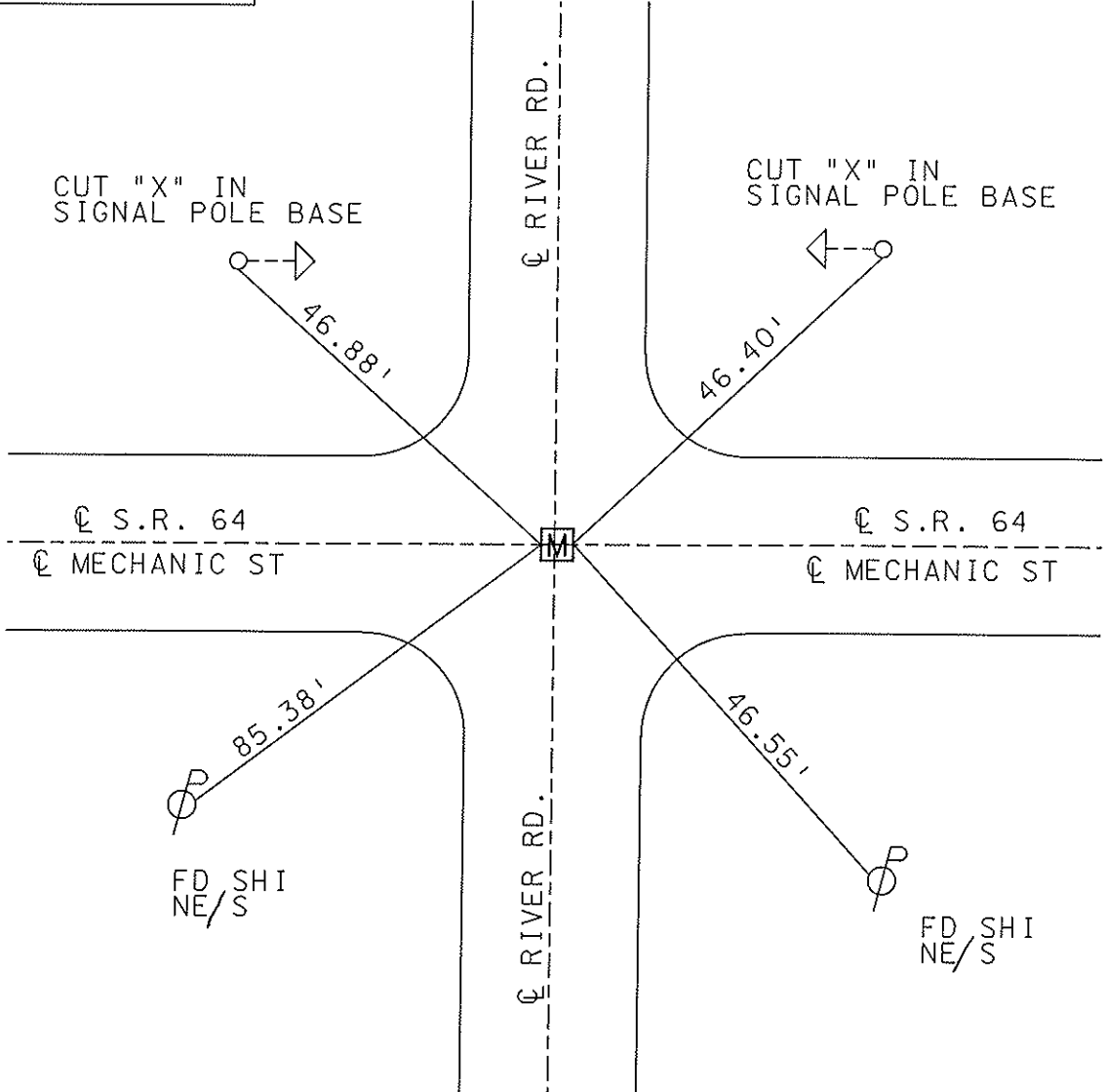
~~LEFT~~ - Q PAV'T - ~~RIGHT~~ YES BOTH

TO EDGE PAVEMENT

S.L.M. 8+77



MONUMENT BOX SET



O.D.O.T. DISTRICT 2 SURVEY OFFICE

PERSONNEL

REFERENCE NO. 1

SHEET 1 OF 49

NOTES LOEHRKE

H.C. STONE

R.C. CURTIS

DATE 8-14-91

WEATHER CLEAR

TEMP. +78

ROUTE S.R. 64

COUNTY LUCAS

TOWNSHIP WATERVILLE

SECTION _____

T _____ R _____

TYPE MONUMENT RR SPIKE - Set P.K. / WASHER

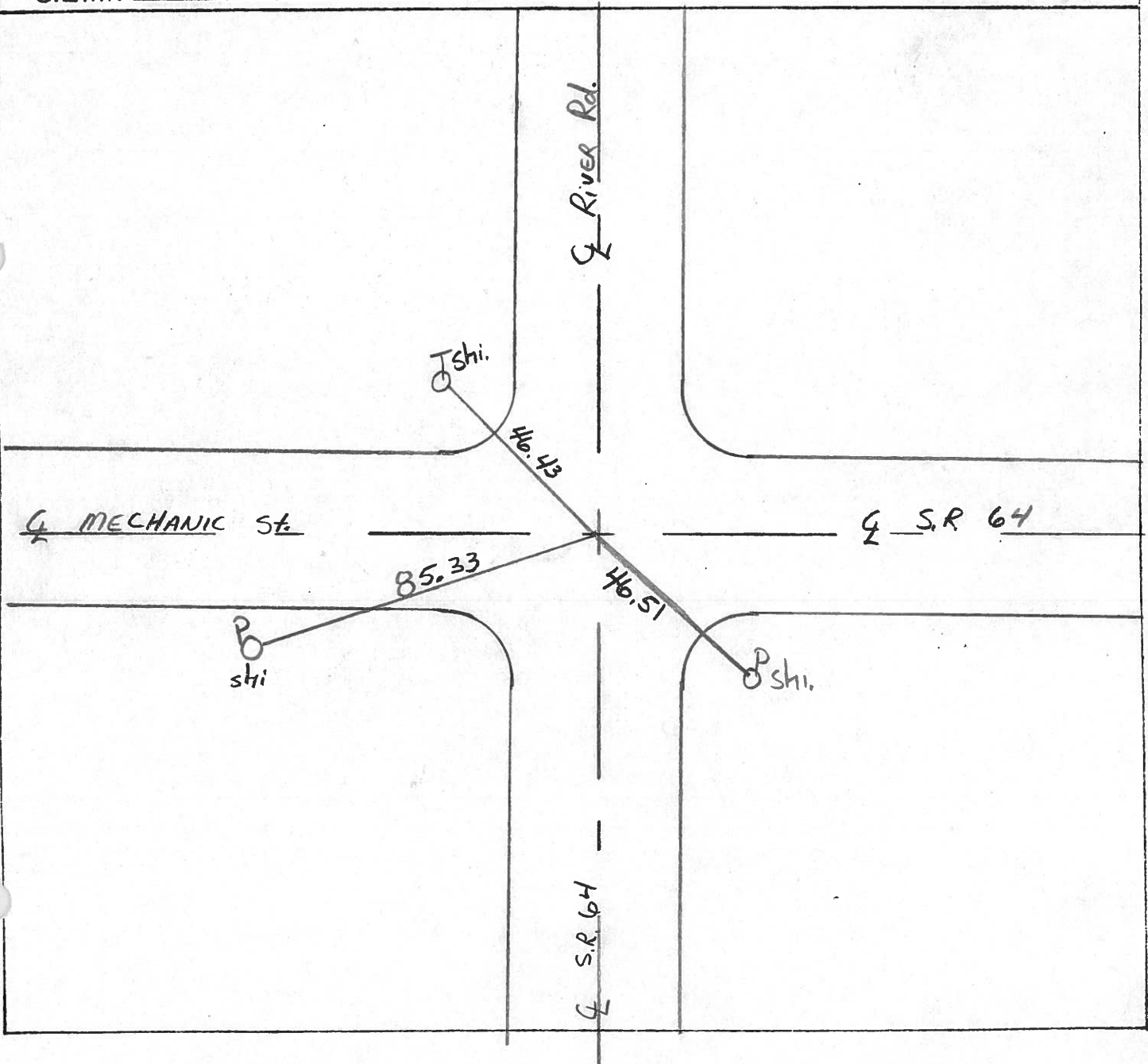
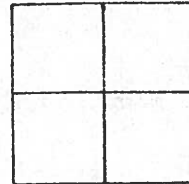
~~ON SURFACE~~ - BELOW 3"

3-10-92

~~LEFT - & PAV'T. - RIGHT~~ BOTH

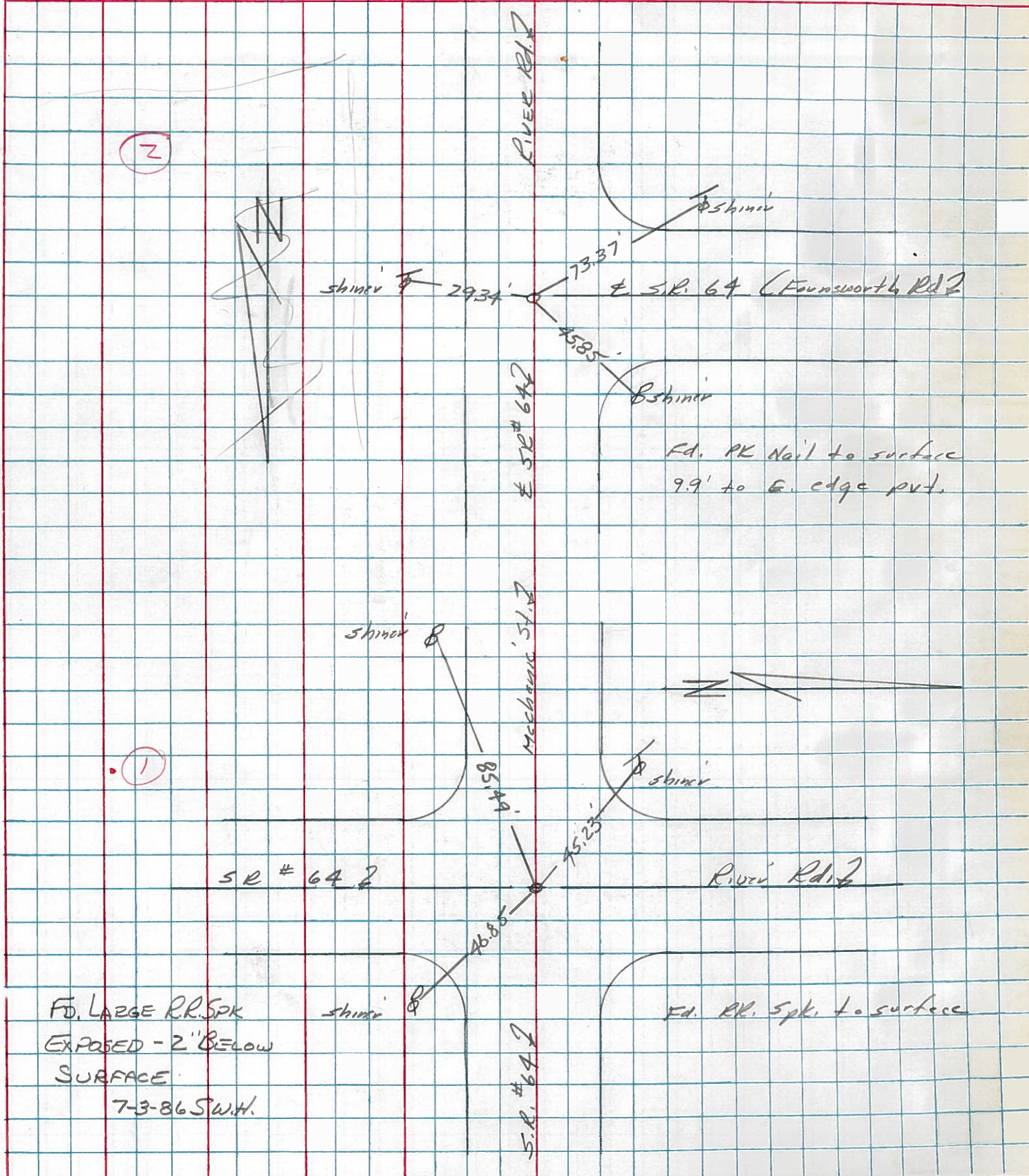
TO EDGE PAVEMENT

S.L.M. B+77



PERSONNEL	TITLE	PERSONNEL	TITLE	COUNTY	DATE	WEATHER	TEMP.
Stanc				Lucas	21 March 77	Fair	43°
E				S. R. 64			
Crew				SEC. Waterville			

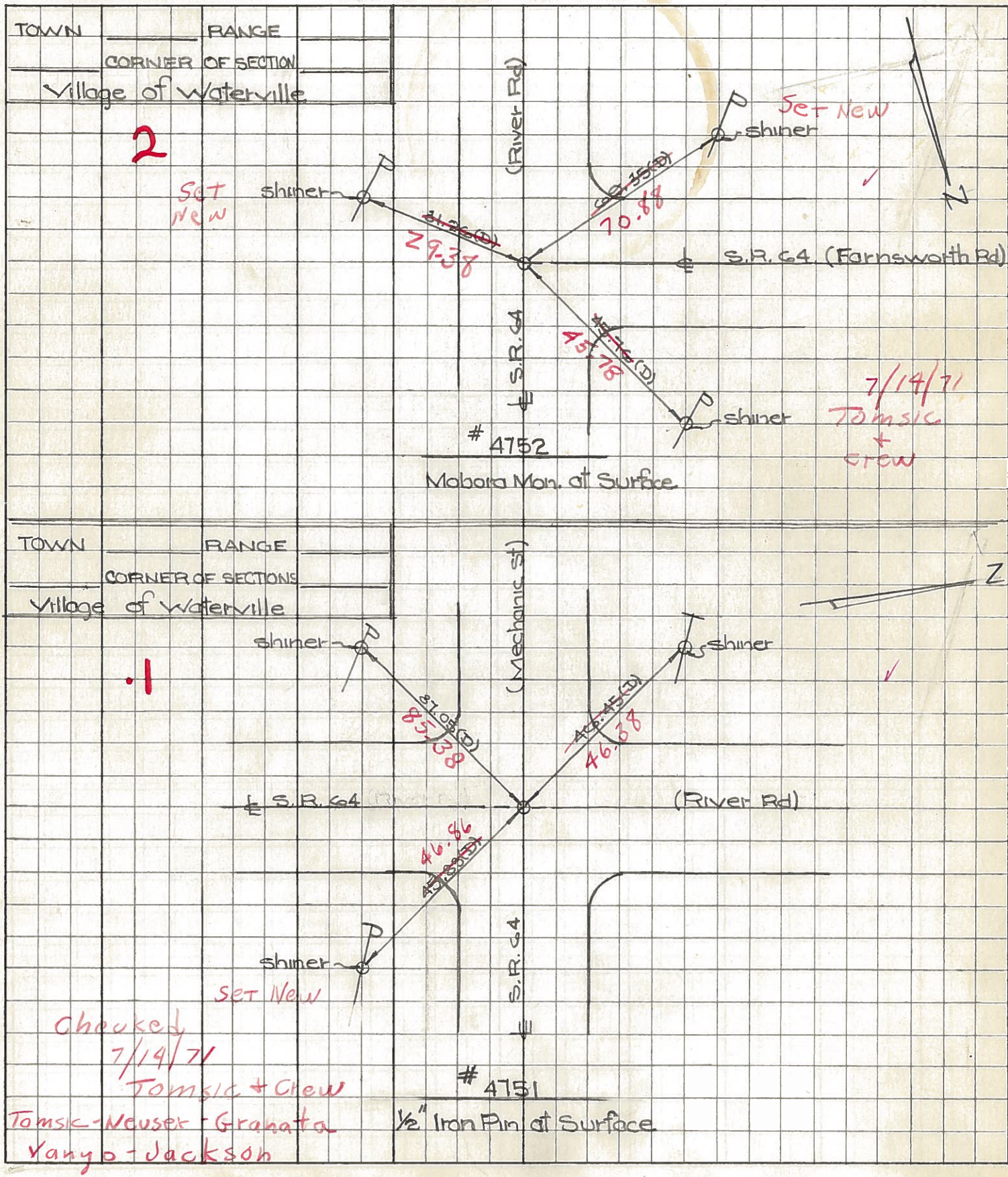
DESCRIPTION References to Control Points JOB NO. _____



PERSONNEL TITLE PERSONNEL TITLE
 W. Denno _____
 D. Curtis _____
 J. Teal _____

COUNTY Lucas DATE July 29, 1968
 S. R. 64 WEATHER mild
 SEC. _____ TEMP. 75°±

DESCRIPTION S.R. 64 - Ref. Mon. & Control Points JOB NO. 02994(0)



Checked
 7/14/71
 Tomsic + crew
 Tomsic - Neuser - Granata
 Vanyo - Jackson

PERSONNEL TITLE PERSONNEL TITLE COUNTY Lucas DATE 23 Feb. 66
 Stanc _____
 Beck _____ S. R. #64 WEATHER Cool
 Brindley _____
 Schrader _____ SEC. Waterville - w. TEMP. 31°

DESCRIPTION Pts. To Central Pts. JOB NO.
 LEFT CENTER LINE RIGHT

DESCRIPTION	LEFT	CENTER LINE	RIGHT	JOB NO.
.1 Int. Mechanic St. E S.R. #64 (River Rd) Fd. R.R. Spk. To Surface		45.89'	S.E. To Shiner in P.P.	(D)
		46.49' 46.45'	N.W. To Shiner in T.P.	(D)
		87.04' 87.06'	S.W. To Shiner in P.P.	(D)
2 Int Farnsworth Rd. E S.R. #64 (River Rd) Fd. Hobara To Surface		45.76' OK	N.W. To Shiner in T.P.	(D)
		69.35' OK	S.W. To Shiner in P.P.	(D)
		30.32' 31.26'	S.E. To Shiner in P.P.	(D)
3 Int. Second St. E S.R. #64 (Farnsworth Rd) Fd. R.R. Nail To Surface		56.00' 56.03'	S.W. To N.E. Corn Brick Bldg.	(D)
		40.37' 40.35'	S.E. To Shiner in P.P.	(D)
		54.73' 54.70'	N.W. To Shiner in 27" Tree	(D)
4 Int Third St. E S.R. #64 (Farnsworth Rd) Fd. R.R. Spk. To Surface		41.93'	N.W. To Shiner in P.P.	(D)
		41.46' 41.45'	S.W. To Shiner in P.P.	(D)
		58.20' 58.14'	N.E. To S.W. Corn Spk To Bldg.	(D)
		72.02' 71.97'	N.W. To S.E. Corn Stock Bldg.	(D)
Int. S.R. #64 E S.R. #27 Fd. Hobara To Surface		35.03'	N. To Shiner in L.P.	(D)
		64.14'	S.W. To Shiner in T.P.	(D)
		52.98'	E.S.E. To Shiner in P.P.	(D)
5 Int. S.R. #64 E E Fourth St. Fd. Hobara To Surface		34.71' 34.67'	S.W. To Shiner in P.P.	(D)
		40.83' 40.80'	N.W. To "t" on curb at sidewalk	(D)
		40.49' 40.45'	N.E. To "t" on curb at sidewalk	(D)