

O.D.O.T. DISTRICT 2 SURVEY OFFICE (USE ONLY)

PERSONNEL \_\_\_\_\_ REFERENCE NO. 3 SHEET 5 OF 5

NOTES ROUSOS DATE 5/7/02 ROUTE SR 64  
 H.C. HOMAN WEATHER SUNNY COUNTY LUCAS  
 R.C. ROUSOS TEMP. 65° TOWNSHIP WATERVILLE  
 SECTION RT 36

DWG BY RHOADES PID 92088 T 6 N R 10 E

TYPE MONUMENT 1/2" IPIN

~~ON SURFACE~~ - BELOW 7"

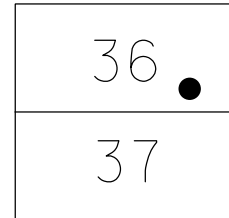
OFFSET  $\odot$  PAVEMENT ON \_\_\_\_\_ LT : RT

- TO - EDGE PAVEMENT

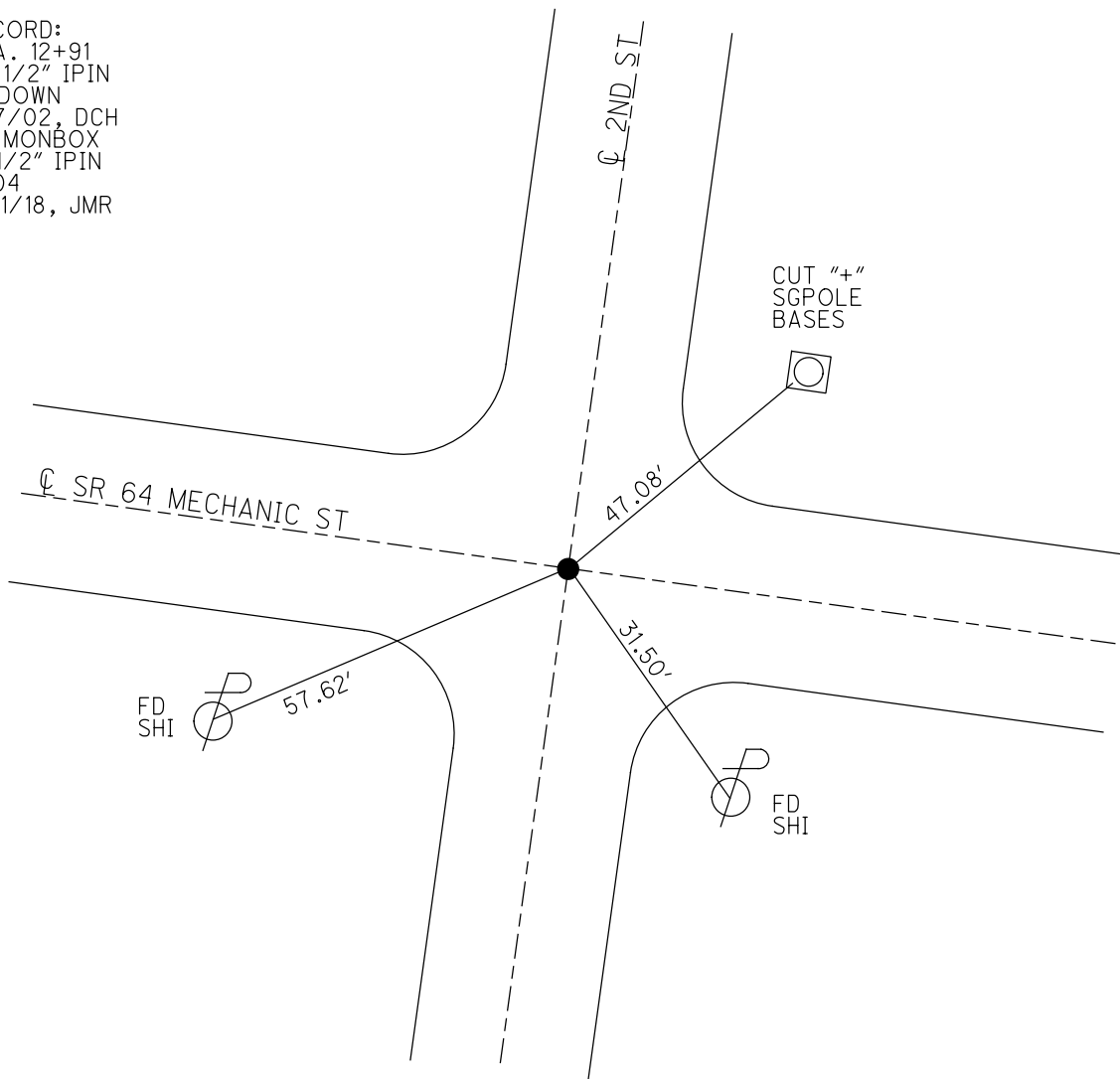
STATION: 12+90.12

HORIZ.DATUM: NAD 83 2011 GEOID: 2018

GRID: NORTHING: 670470.795 EASTING: 1634769.710



RECORD:  
 STA. 12+91  
 FD 1/2" IPIN  
 7" DOWN  
 5/7/02, DCH  
 FD MONBOX  
 W/1/2" IPIN  
 CL04  
 1/31/18, JMR



O.D.O.T. DISTRICT 2 SURVEY OFFICE

PERSONNEL

REFERENCE NO. 3

SHEET 3 OF 47

NOTES ROUSOS

DATE 5-07-02

ROUTE S.R. 64

H.C. HOMAN

WEATHER SUNNY

COUNTY LUCAS

R.C. ROUSOS

TEMP. 65

TOWNSHIP WATERVILLE

SECTION \_\_\_\_\_

T \_\_\_ R \_\_\_

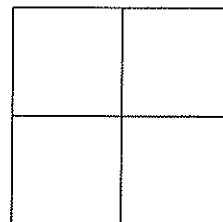
TYPE MONUMENT 1/2" IRON PIN

~~ON SURFACE~~ - BELOW 7"

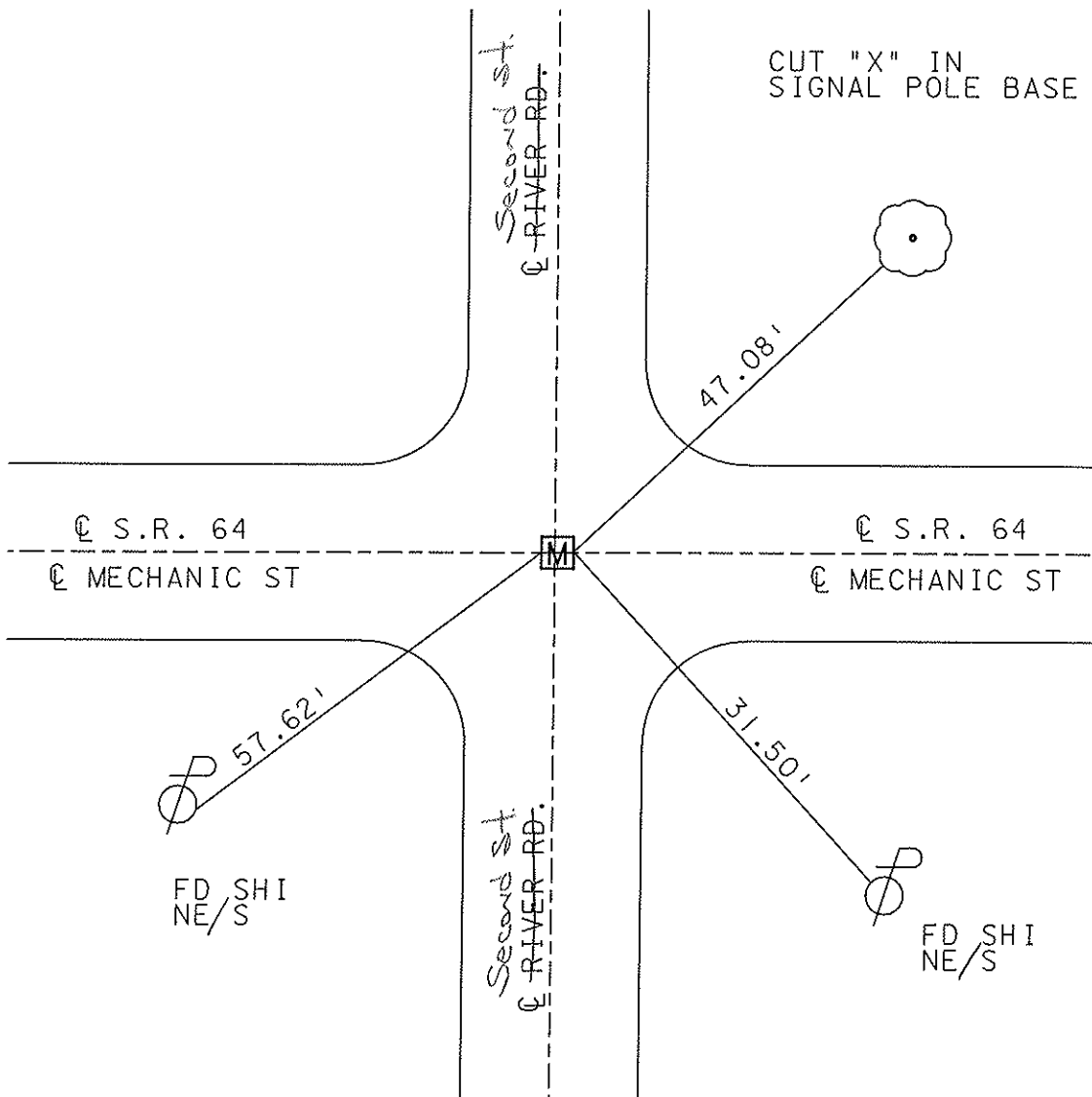
~~LEFT - C~~ PAV'T - ~~RIGHT~~ ON

TO EDGE PAVEMENT

S.L.M. 12+91



MONUMENT BOX SET



O.D.O.T. DISTRICT 2 SURVEY OFFICE

PERSONNEL

REFERENCE NO. 3

SHEET 3 OF 49

NOTES LOEHRKE

H.C. STONE

R.C. CURTIS

DATE 8-14-91

WEATHER CLEAR

TEMP. +77

ROUTE S.R. 64

COUNTY LUCAS

TOWNSHIP WATERVILLE

SECTION \_\_\_\_\_

T \_\_\_\_\_ R \_\_\_\_\_

OLD

TYPE MONUMENT Sm. RR. Spike

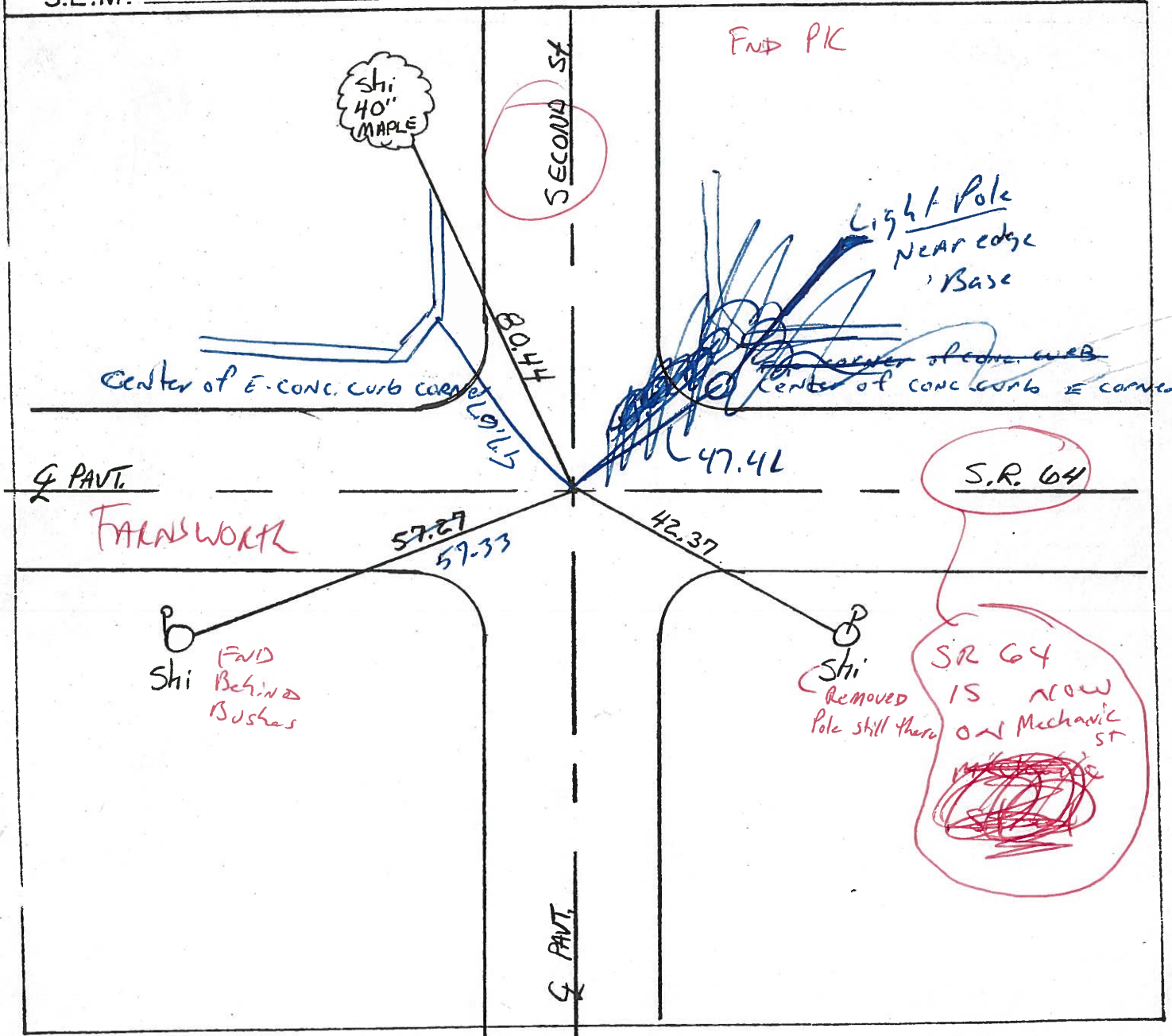
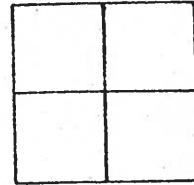
Set P.K. NAIL  
3-4-92  
C.L.

ON SURFACE - BELOW Yes

LEFT - & PAV'T. - RIGHT Both

TO \_\_\_\_\_ EDGE PAVEMENT

S.L.M. 17+37



O.D.O.T. DISTRICT 2 SURVEY OFFICE

PERSONNEL

REFERENCE NO. 3

SHEET 3 OF 49

NOTES LOEHRKE

H.C. STONE

R.C. CURTIS

DATE 8-14-91

WEATHER CLEAR

TEMP. +77

ROUTE S.R. 64

COUNTY LUCAS

TOWNSHIP WATERVILLE

SECTION \_\_\_\_\_

T \_\_\_\_\_ R \_\_\_\_\_

TYPE MONUMENT Sm. RR. Spike

Set P.K. NAIL

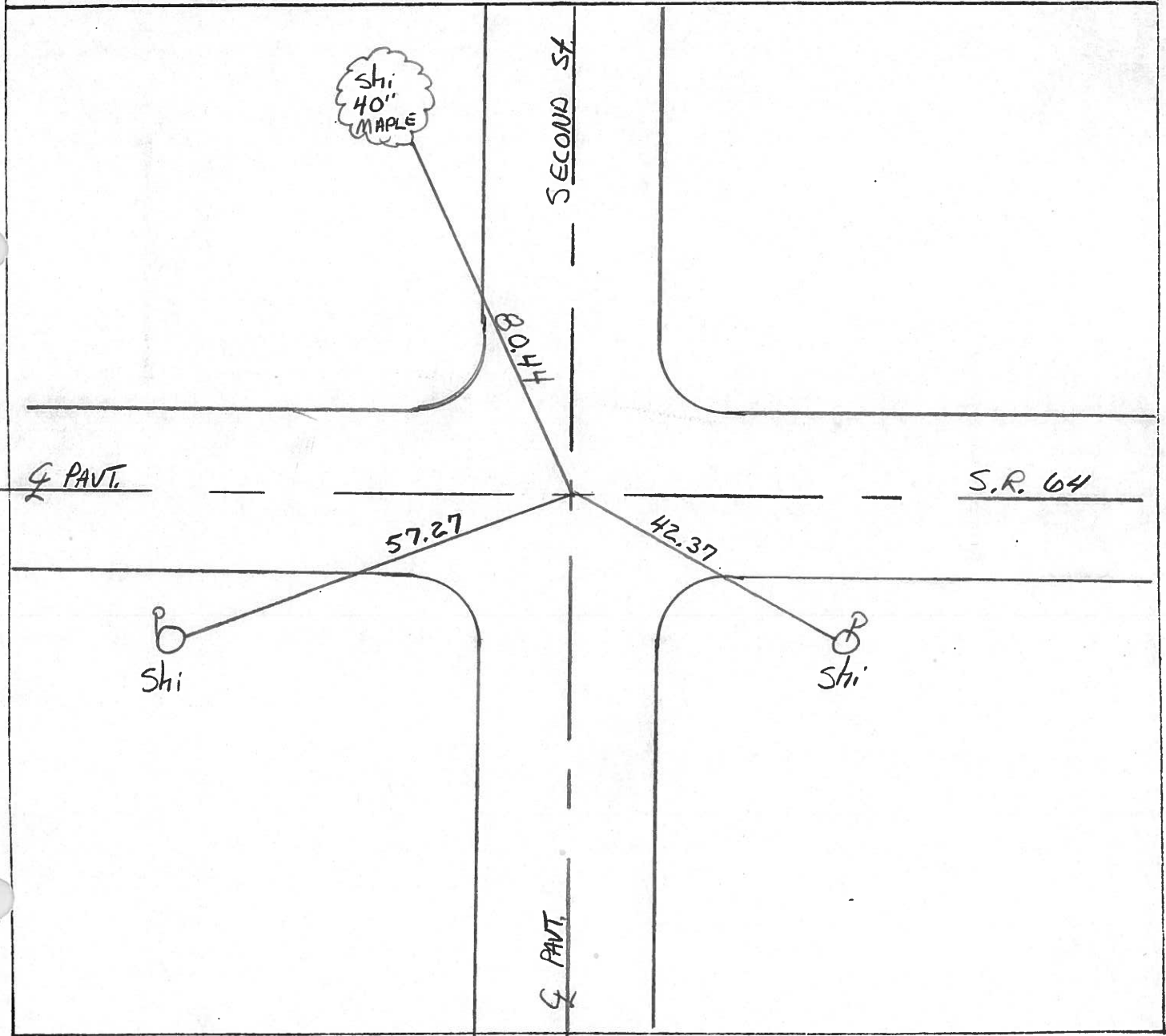
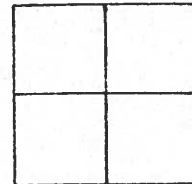
ON SURFACE - BELOW Yes

3-4-92  
C.L.

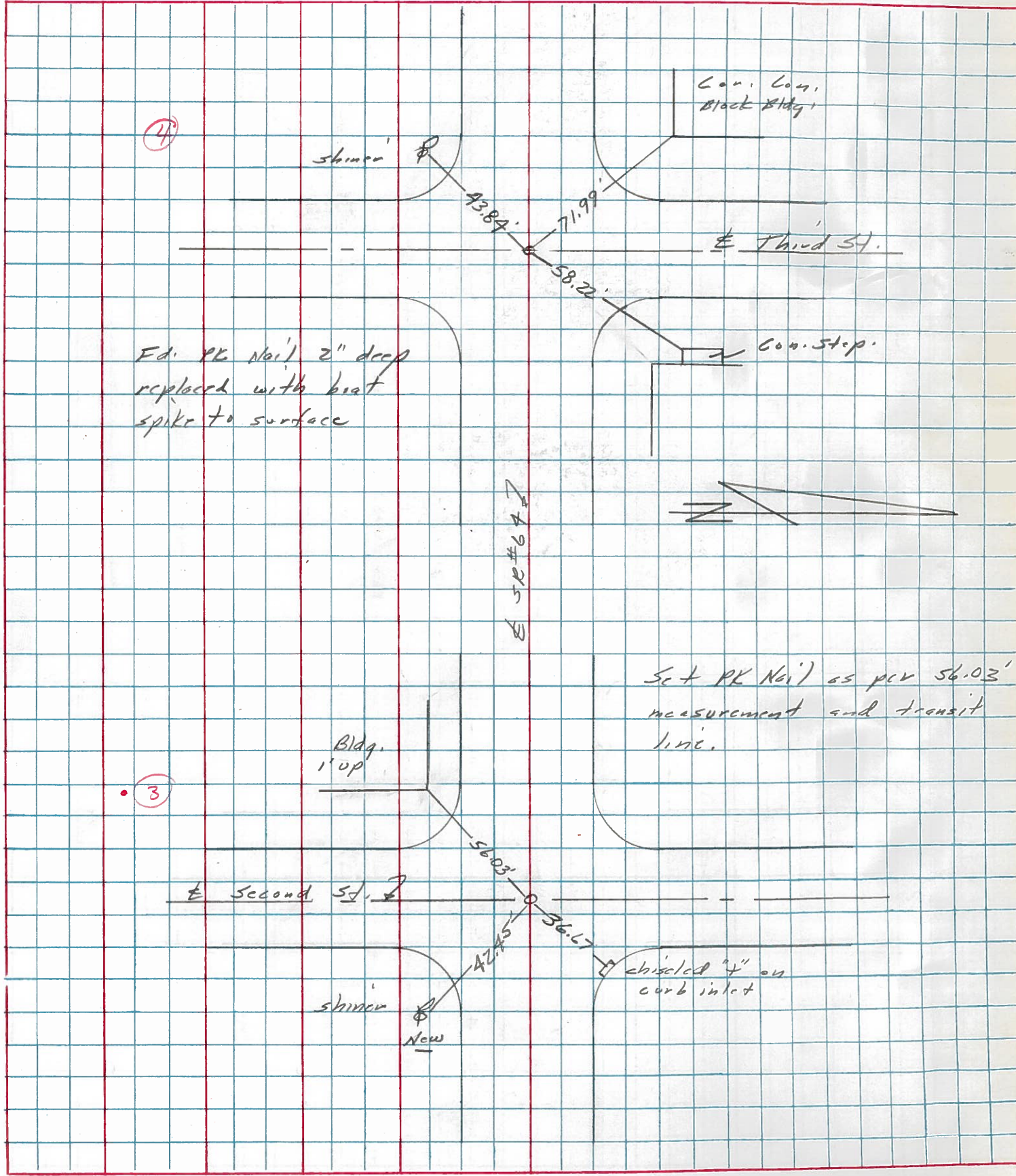
LEFT - & PAV'T. - RIGHT Both

TO EDGE PAVEMENT

S.L.M. 17+37



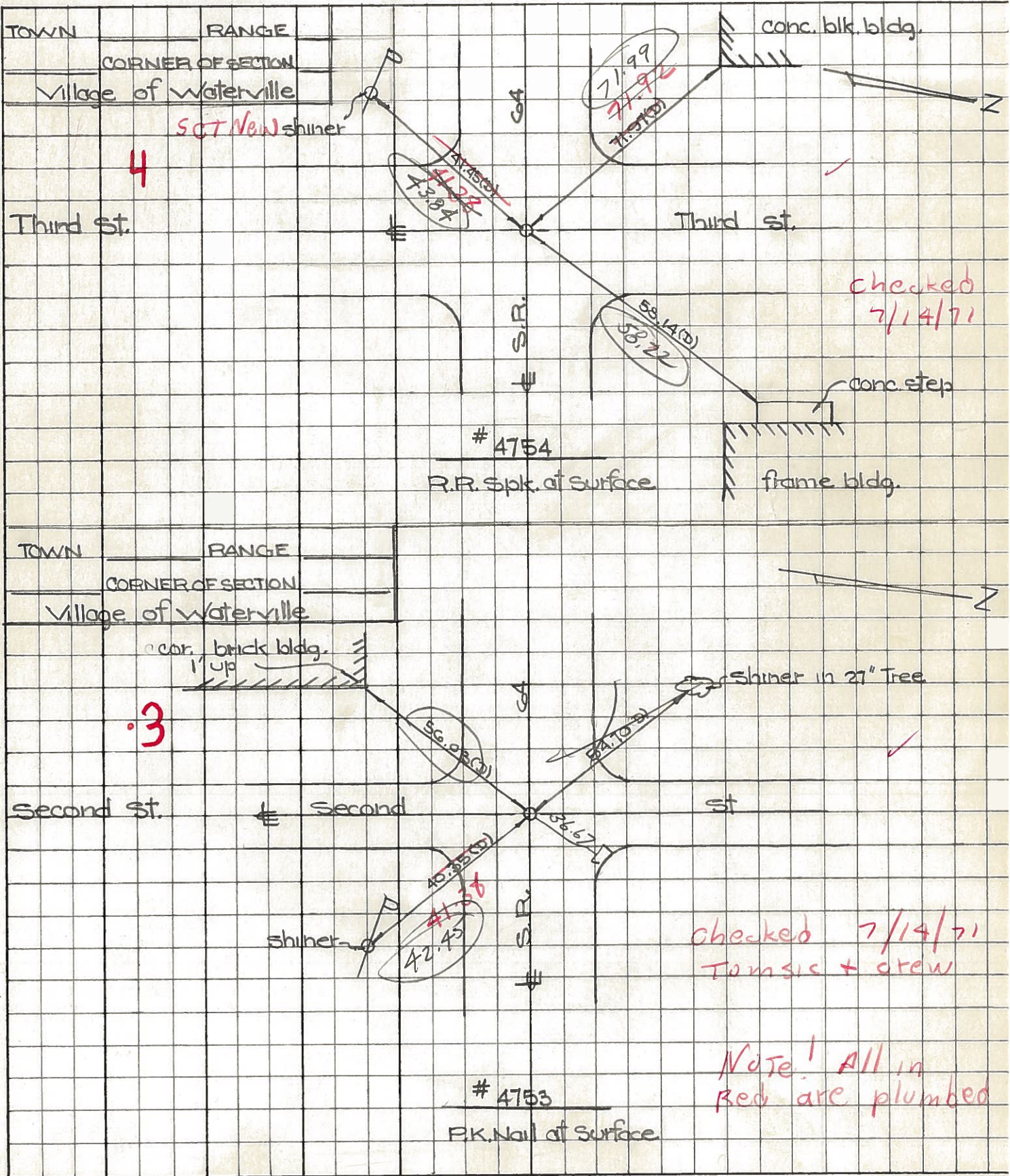
PERSONNEL	TITLE	PERSONNEL	TITLE	COUNTY	DATE
Stone				Lucas	21 March 77
+				S. R. 64	WEATHER Fair
Crow				SEC. Waterville	TEMP. 75°
DESCRIPTION				References to Control Points	JOB NO.
	LEFT	CENTER LINE	RIGHT		



PERSONNEL TITLE PERSONNEL TITLE  
 W. Denno \_\_\_\_\_  
 D. Curtis \_\_\_\_\_  
 J. Teal \_\_\_\_\_

COUNTY Lucas DATE July 29, 1968  
 S. R. 64 WEATHER mild  
 SEC. \_\_\_\_\_ TEMP. 75°±

DESCRIPTION S.R. 64 - Ref Mon. & Control Points JOB NO. 02994(0)



PERSONNEL TITLE PERSONNEL TITLE COUNTY Lucas DATE 23 Feb. 66  
 Stanc \_\_\_\_\_  
 Beck \_\_\_\_\_ S. R. #64 WEATHER Cool  
 Brindley \_\_\_\_\_  
 Schrader \_\_\_\_\_ SEC. Waterville - w. TEMP. 31°

DESCRIPTION Pts. To Central Pts. JOB NO.  
 LEFT CENTER LINE RIGHT

.1	Int. Mechanic St.	45.89'	S.E. To Shiner in P.P.	(D)
	± S.R. #64 (River Rd)	<del>46.49'</del> 46.45'	N.W. To Shiner in T.P.	(D)
	Fd. R.R. Spk. To Surface	87.04' 87.06'	S.W. To Shiner in P.P.	(D)
2	Int. Farnsworth Rd.	45.76' OK	N.W. To Shiner in T.P.	(D)
	± S.R. #64 (River Rd)	69.35' OK	S.W. To Shiner in P.P.	(D)
	Fd. Hobara To Surface	30.32' 31.26'	S.E. To Shiner in P.P.	(D)
3	Int. Second St.	56.00' 56.03'	S.W. To N.E. Corn Brick Bldg.	(D)
	± S.R. #64 (Farnsworth Rd)	40.37' 40.35'	S.E. To Shiner in P.P.	(D)
	Fd. R.R. Nail To Surface	54.73' 54.70'	N.W. To Shiner in 27" Tree	(D)
4	Int. Third St.	<del>41.93'</del>	<del>N.W. To Shiner in P.P.</del>	<del>(D)</del>
	± S.R. #64 (Farnsworth Rd)	41.46' 41.45'	S.W. To Shiner in P.P.	(D)
	Fd. R.R. Spk. To Surface	58.20' 58.14'	N.E. To S.W. Corn. Sim. Spk. To Bldg.	(D)
		72.02' 71.97'	N.W. To S.E. Corn. Stock Bldg.	(D)
5	Int. S.R. #64 ± S.R. #27	35.03'	N. To Shiner in L.P.	(D)
	Fd. Hobara To Surface	64.14'	S.W. To Shiner in T.P.	(D)
		52.98'	E.S.E. To Shiner in P.P.	(D)
5	Int. S.R. #64 ±	34.71' 34.67'	S.W. To Shiner in P.P.	(D)
	± Fourth St.	40.83' 40.80'	N.W. To "t" on curb at sidewalk	(D)
	Fd. Hobara To Surface	40.49' 40.45'	N.E. To "t" on curb at sidewalk	(D)