

O.D.O.T. DISTRICT 2 SURVEY OFFICE

PERSONNEL

REFERENCE NO. 2

SHEET 2 OF 49

NOTES LOEHRKE

H.C. STONE

R.C. CURTIS

DATE 8-14-91

WEATHER CLEAR

TEMP. +77

ROUTE S.R. 64

COUNTY LUCAS

TOWNSHIP WATERVILLE

SECTION _____

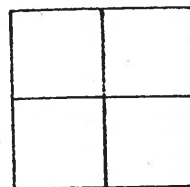
T _____ R _____

TYPE MONUMENT BRASS Mon. Set P.K. / WASHER
ON SURFACE - BELOW Yes 3-16-92

~~LEFT~~ - & PAV'T. - RIGHT Yes

TO _____ EDGE PAVEMENT

S.L.M. 13+72



*3-18-02
FND MAG NAIL*

COLUMBIAN
HOUSE

~~PAVT S.R. 64~~
Old S.R. 64

PAVT

S.R. 64

*S.R. 64
18' / 10' / 0' / 0' / 0'
measured / struck.*

FARNSWORTH Rd

73.41'
73.39'

25.85'
25.83'

Bottom
NEAR FACE
Light Pole

Shi
FND

Shi
FND

RIVER Rd

PAVT

SCHOOL

ELEM.

WATERVILLE

O.D.O.T. DISTRICT 2 SURVEY OFFICE

PERSONNEL _____

REFERENCE NO. 2

SHEET 2 OF 49

NOTES LOEHRKE

H.C. STONE

R.C. CURTIS

DATE 8-14-91

WEATHER CLEAR

TEMP. +77

ROUTE S.R.64

COUNTY LUCAS

TOWNSHIP WATERVILLE

SECTION _____

T. _____ R. _____

TYPE MONUMENT BRASS MON. - Set P.K. / WASHER

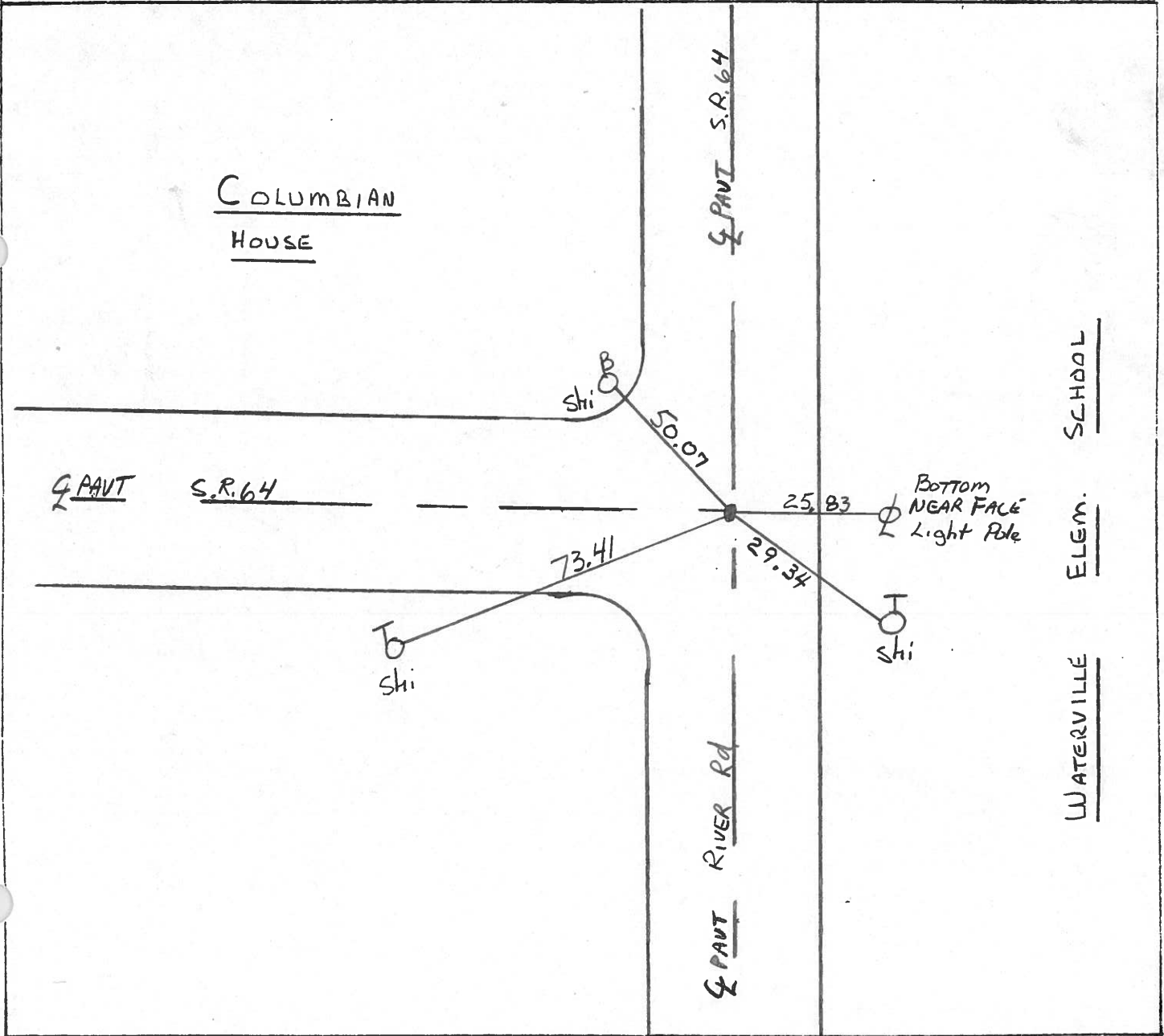
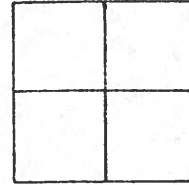
ON SURFACE - BELOW Yes

~~LEFT~~ - & PAV'T. - RIGHT Yes

TO _____ EDGE PAVEMENT

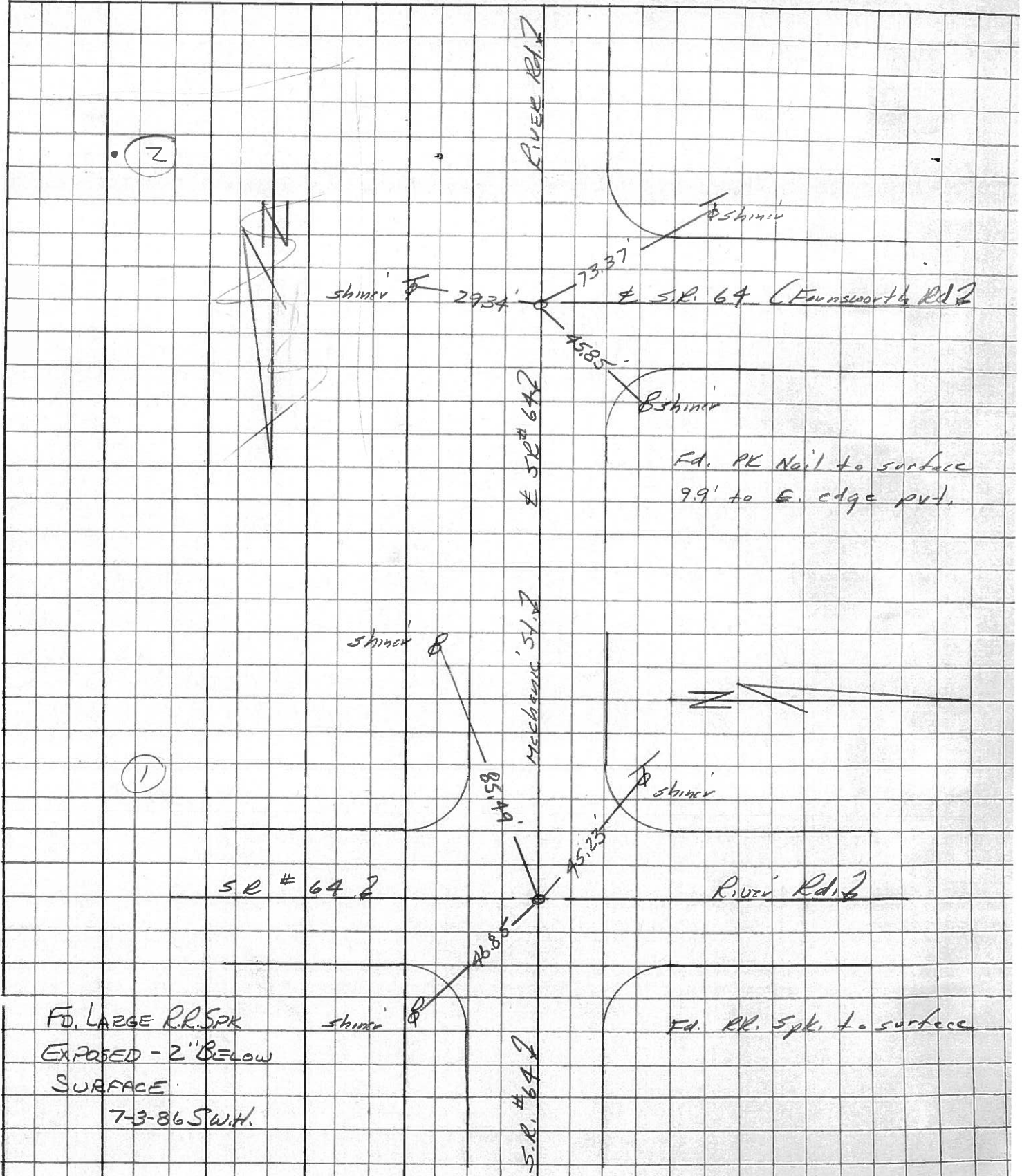
S.L.M. 13+72

3-16-92



PERSONNEL	TITLE	PERSONNEL	TITLE	COUNTY	DATE	WEATHER	TEMP.
Stanc				Lucas	21 March 7	Fair	43°
E				S. R. 64			
Crew				SEC. Waterville			

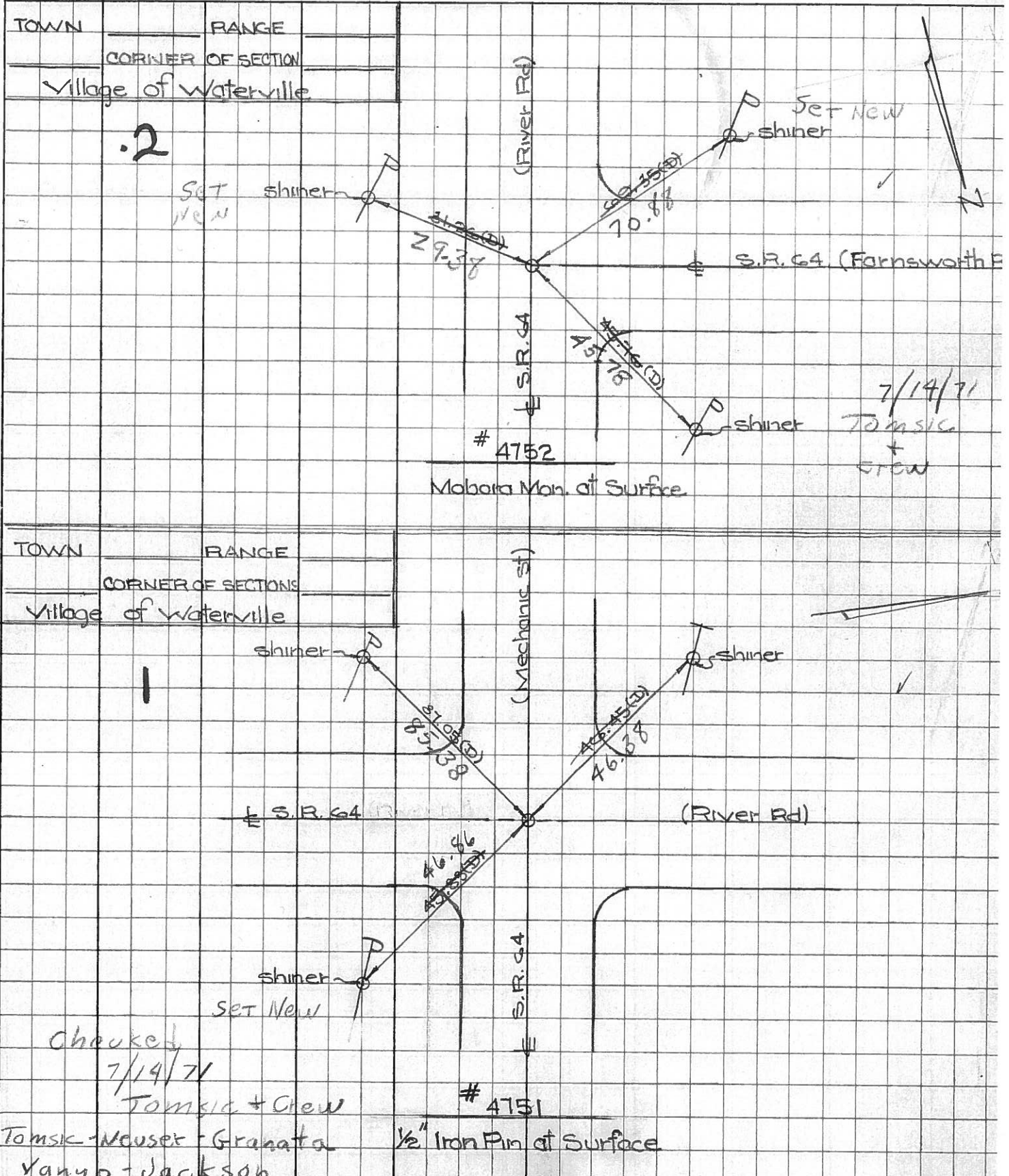
DESCRIPTION: *References to Control Points*



PERSONNEL TITLE PERSONNEL TITLE
 W. Denno _____
 D. Curtis _____
 J. Teal _____

COUNTY Lucas DATE July 29, 1964
 S. R. 64 WEATHER mild
 SEC. _____ TEMP. 75°±

DESCRIPTION S.R. 64 - Ref. Mon. & Control Points JOB NO. 02994(01)



PERSONNEL	TITLE	PERSONNEL	TITLE	COUNTY	Lucas	DATE	23 Feb. 66
Stanc				S. R.	# 64	WEATHER	Cool
Buck				SEC.	Waterville - W.	TEMP.	31°
Brindley							
Schroder							

DESCRIPTION Pts To Central Pts. LEFT CENTER LINE RIGHT JOB NO.

DESCRIPTION	LEFT	CENTER LINE	RIGHT	JOB NO.
1 /	Int. Mechanic St.	45.89'	S.E. To Shiner in P.P.	(D)
	§ S.R. #64 (River Rd)	46.49' 46.45'	N.W. To Shiner in T.P.	(D)
	Fd. R.R. Spk. To Surface	87.04' 87.05'	S.W. To Shiner in P.P.	(D)
2 /	Int. Farnsworth Rd.	45.76' 0K	N.W. To Shiner in T.P.	(D)
	§ S.R. #64 (River Rd)	69.35' 0K	S.W. To Shiner in P.P.	(D)
	Fd. Hobara To Surface	30.32' 31.26	S.E. To Shiner in P.P.	(D)
3 /	Int. Second St.	56.00' 56.03	S.W. To N.E. Con. Brick Bldg.	(D)
	§ S.R. #64 (Farnsworth Rd)	40.37' 40.35	S.E. To Shiner in P.P.	(D)
	Fd. R.R. Nail To Surface	54.73' 54.70	N.W. To Shiner in 27' Lane	(D)
4 /	Int. Third St.	41.99'	N.W. To Shiner in P.P.	(D)
	§ S.R. #64 (Farnsworth Rd)	41.46' 41.15	S.W. To Shiner in P.P.	(D)
	Fd. R.R. Spk. To Surface	58.20' 58.14	N.E. To S.W. Con. Con. Step To Bldg.	(D)
		72.02' 71.97	N.W. To S.E. Con. Brick Bldg.	(D)
/	Int. S.R. #64 § S.R. #29	35.03'	N. To Shiner in L.P.	(D)
	Fd. Hobara To Surface	64.14'	S.W. To Shiner in T.P.	(D)
		52.98'	E.S.E. To Shiner in P.P.	(D)
5 /	Int. S.R. #64 §	36.71' 36.67	S.W. To Shiner in P.P.	(D)
	§ Fourth St.	40.83' 40.80	N.W. To "4" on Curb at Sidewalk	(D)
	Fd. Hobara To Surface	40.47' 40.45	N.E. To "4" on Curb at Sidewalk	(D)