

O.D.O.T. DISTRICT 2 SURVEY OFFICE

PERSONNEL

REFERENCE NO. 4

SHEET 4 OF 49

NOTES LOEHRKE

H.C. STONE

R.C. CURTIS

DATE 8-14-91

WEATHER CLEAR

TEMP. +77

ROUTE S.R. 64

COUNTY LUCAS

TOWNSHIP WATERVILLE

SECTION _____

T _____ R _____

TYPE MONUMENT BOAT SPIKE

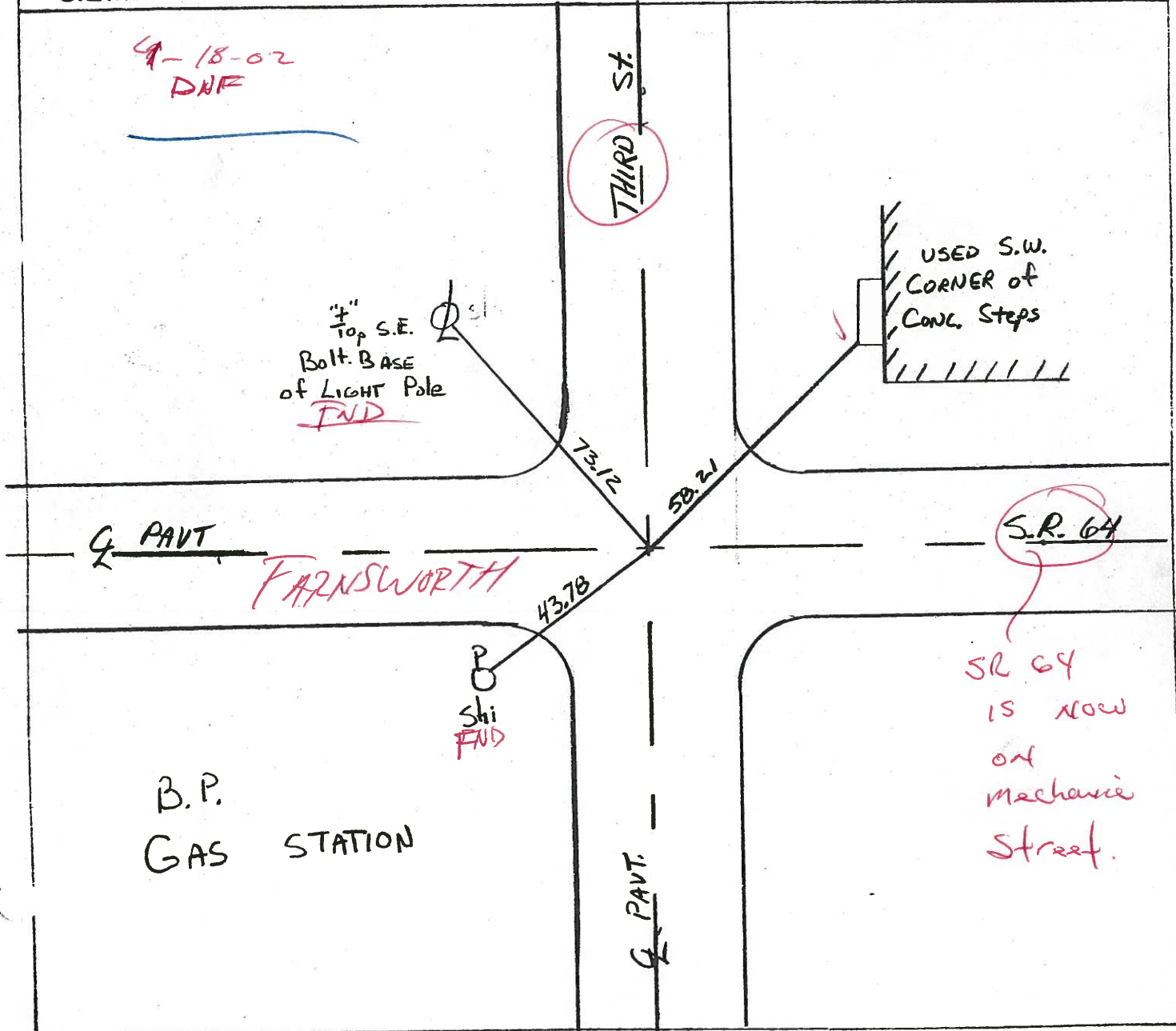
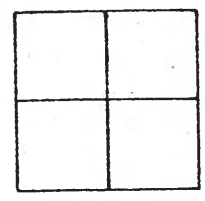
ON SURFACE - BELOW YES

~~LEFT~~ - C PAV'T. - ~~RIGHT~~ YES

TO _____ EDGE PAVEMENT

S.L.M. 20+99

Set P.K. NAIL
3-4-92



O.D.O.T. DISTRICT 2 SURVEY OFFICE

PERSONNEL

REFERENCE NO. 4

SHEET 4 OF 49

NOTES LOEHRKE

H.C. STONE

R.C. CURTIS

DATE 8-14-91

WEATHER CLEAR

TEMP. +77

ROUTE S.R. 64

COUNTY LUCAS

TOWNSHIP WATERVILLE

SECTION _____

T _____ R _____

TYPE MONUMENT BOAT SPIKE

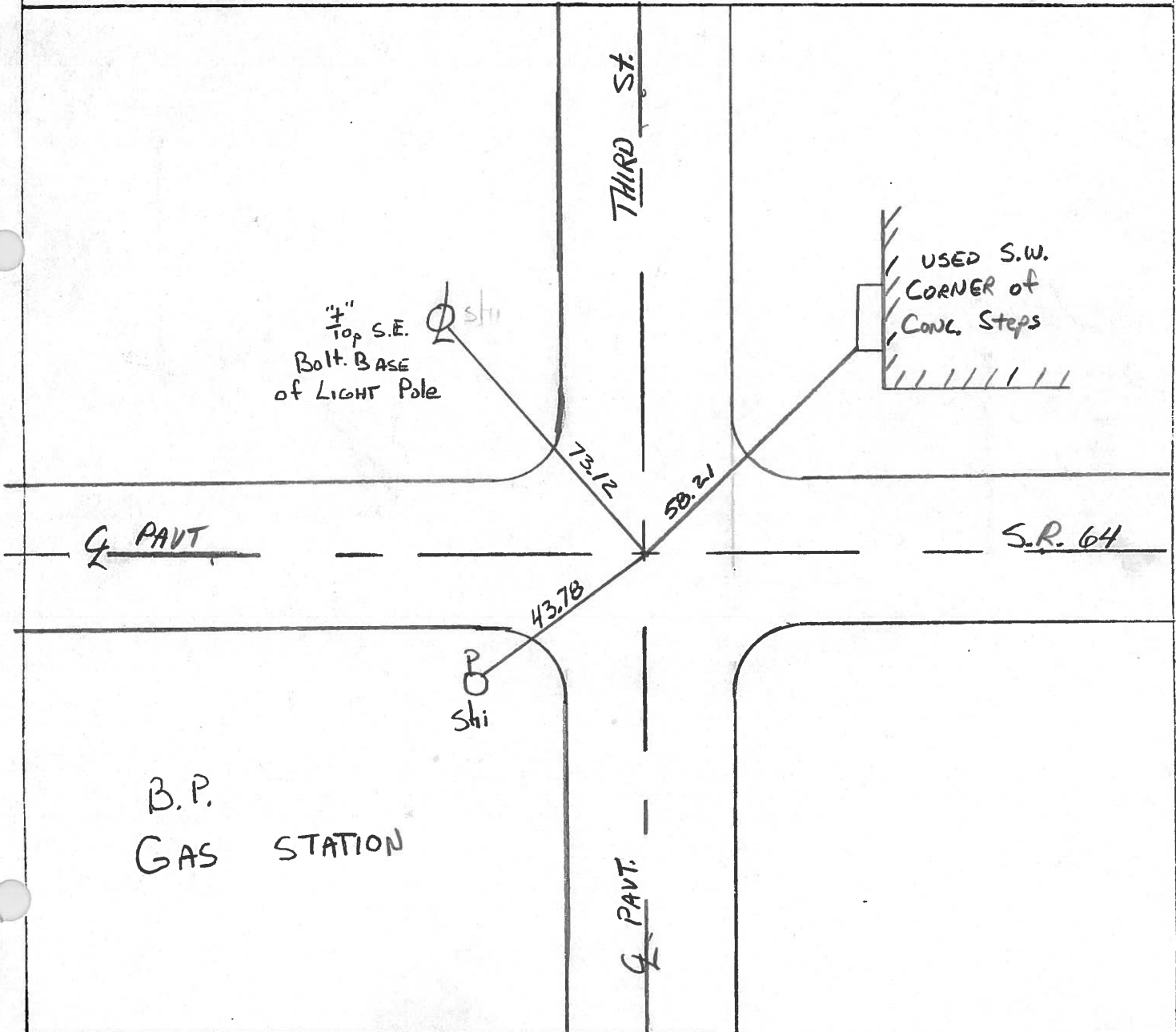
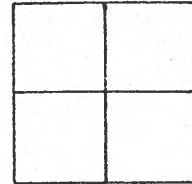
Set P.K. NAIL
3-4-92

ON SURFACE - BELOW YES

~~LEFT~~ - RIGHT PAV'T. - RIGHT YES

TO EDGE PAVEMENT

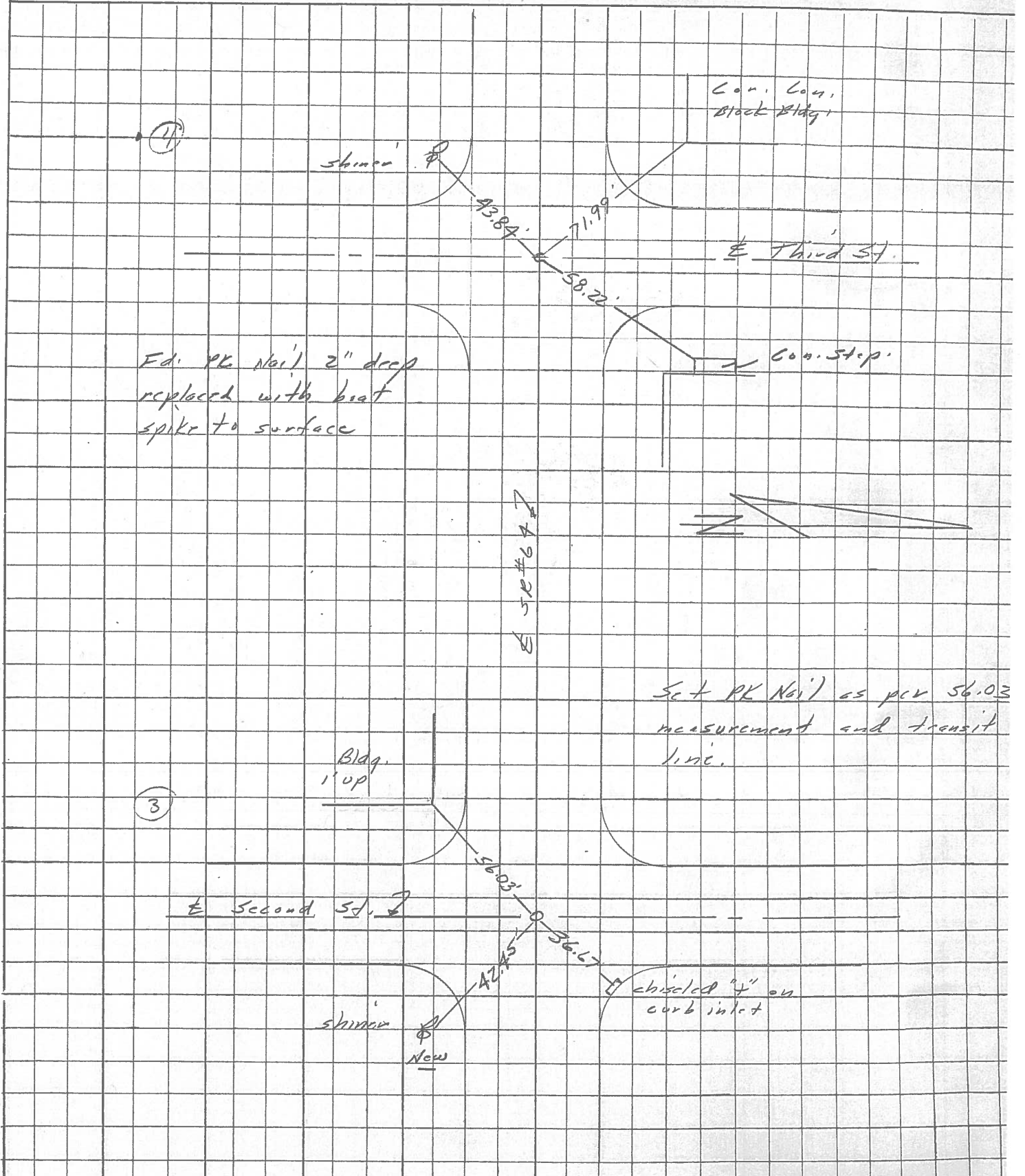
S.L.M. 20+99



PERSONNEL	TITLE	PERSONNEL	TITLE	COUNTY	DATE	WEATHER	TEMP.
Stone				Lucas	21 March 7	Fair	75°
Crew				S. R. 64			
				SEC. Waterville			

DESCRIPTION: References to Control Points

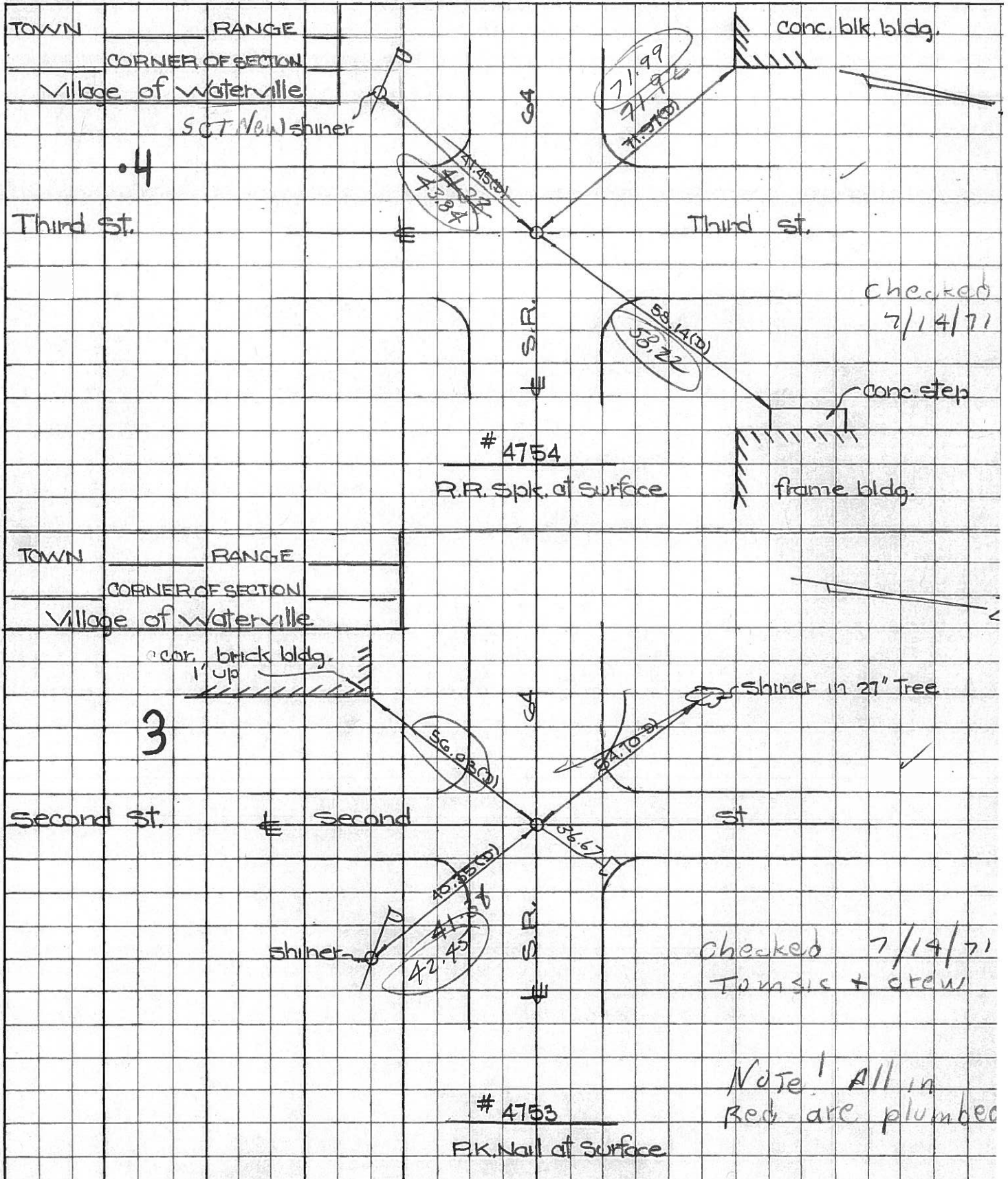
LEFT CENTER LINE RIGHT JOB NO.



PERSONNEL	TITLE	PERSONNEL	TITLE
W. Denno			
D. Curtis			
J. Teal			

COUNTY Lucas DATE July 29, 1971
 S. R. 64 WEATHER mild
 SEC. _____ TEMP. 75°±

DESCRIPTION S.R. 64 - Ref. Mon. & Control Points JOB NO. 02994(0)



PERSONNEL TITLE PERSONNEL TITLE COUNTY Lucas DATE 23 Feb. 66
 Stanc _____
 Beck _____ S. R. #64 WEATHER Cool
 Brindley _____
 Schrader _____ SEC. Waterville - w. TEMP. 31°

DESCRIPTION Pts. To Central Pts. JOB NO.
 LEFT CENTER LINE RIGHT

DESCRIPTION	LEFT	CENTER LINE	RIGHT	JOB NO.
.1 Int. Mechanic St. E S.R. #64 (River Rd) Fd. R.R. Spk. To Surface		45.89'	S.E. To Shiner in P.P.	(D)
		46.49' 46.45'	N.W. To Shiner in T.P.	(D)
		87.04' 87.06'	S.W. To Shiner in P.P.	(D)
2 Int. Farnsworth Rd. E S.R. #64 (River Rd) Fd. Hobara To Surface		45.76' OK	N.W. To Shiner in T.P.	(D)
		69.35' OK	S.W. To Shiner in P.P.	(D)
		30.32' 31.26'	S.E. To Shiner in P.P.	(D)
3 Int. Second St. E S.R. #64 (Farnsworth Rd) Fd. R.R. Nail To Surface		56.00' 56.03'	S.W. To N.E. Corn Brick Bldg.	(D)
		40.37' 40.35'	S.E. To Shiner in P.P.	(D)
		54.73' 54.70'	N.W. To Shiner in 27" Tree	(D)
4 Int. Third St. E S.R. #64 (Farnsworth Rd) Fd. R.R. Spk. To Surface		41.93'	N.W. To Shiner in P.P.	(D)
		41.46' 41.45'	S.W. To Shiner in P.P.	(D)
		58.20' 58.14'	N.E. To S.W. Corn Spk To Bldg.	(D)
		72.02' 71.97'	N.W. To S.E. Corn Stock Bldg.	(D)
Int. S.R. #64 E S.R. #27 Fd. Hobara To Surface		35.03'	N. To Shiner in L.P.	(D)
		64.14'	S.W. To Shiner in T.P.	(D)
		52.98'	E.S.E. To Shiner in P.P.	(D)
5 Int. S.R. #64 E E Fourth St. Fd. Hobara To Surface		34.71' 34.67'	S.W. To Shiner in P.P.	(D)
		40.83' 40.80'	N.W. To "t" on curb at sidewalk	(D)
		40.49' 40.45'	N.E. To "t" on curb at sidewalk	(D)