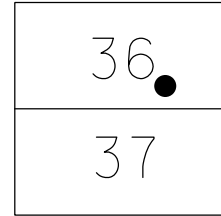


O.D.O.T. DISTRICT 2 SURVEY OFFICE (USE ONLY)

PERSONNEL _____ REFERENCE NO. 4 SHEET 6 OF 7
 NOTES STONE DATE 6/26/84 ROUTE SR 64
 H.C. _____ WEATHER FAIR COUNTY LUCAS
 R.C. MICHALAK TEMP. 71° TOWNSHIP 12 MILE RESERVE
 CURTIS SECTION RT 36
 DWG BY NIESE PID _____ T 1 US R E

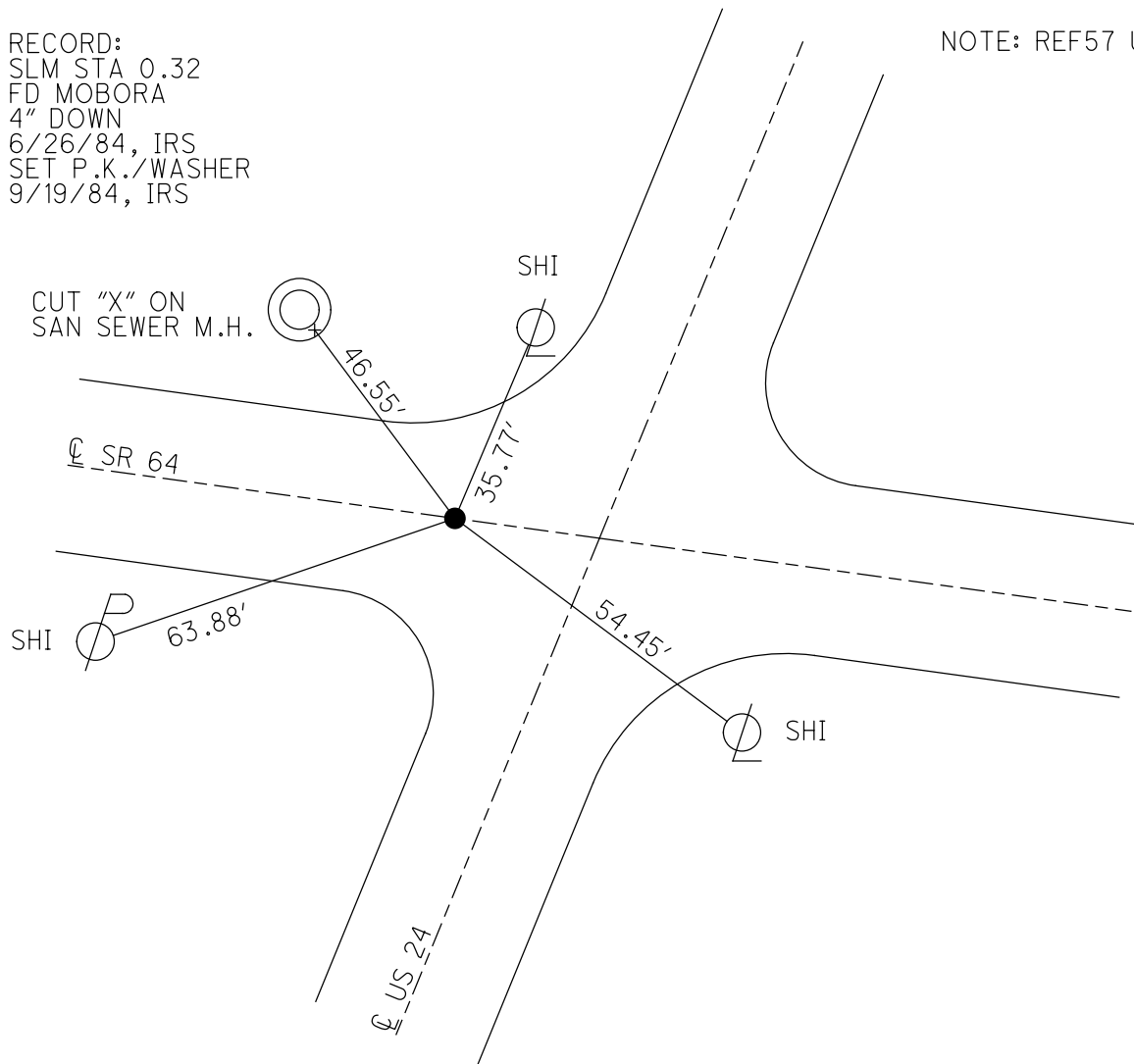
TYPE MONUMENT MOBORA
~~ON SURFACE~~ - BELOW 4"
 OFFSET \odot PAVEMENT ON LT : RT
- TO - EDGE PAVEMENT
 STATION: 16+89.6



HORZ. DATUM: _____ GEOID: _____
 GRID: NORTHING: _____ EASTING: _____

RECORD:
 SLM STA 0.32
 FD MOBORA
 4" DOWN
 6/26/84, IRS
 SET P.K./WASHER
 9/19/84, IRS

NOTE: REF57 US 24



OD.O.T. DISTRICT 2 SURVEY OFFICE

SHEET ~~6~~ OF ~~7~~
4 of 47

County Lucas SR US #24

Township Waterville

Section _____

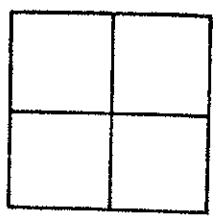
T N, R E

Personnel I. Stone
P. Neuse
R. Michalak
D. Curtis

Date 26 June 84

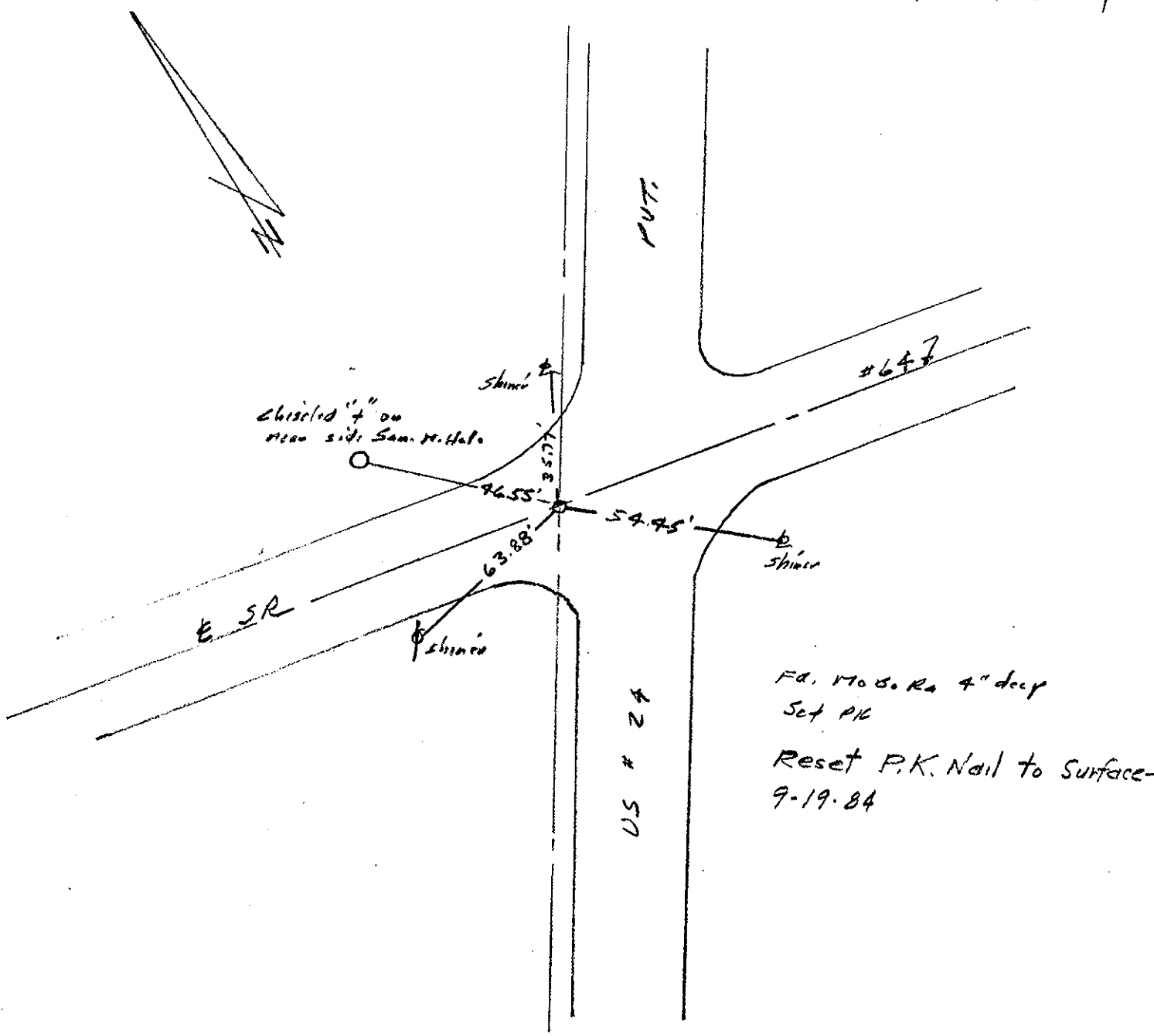
Weather Fair

Temp. 71°



SLM STA. 0.32

REF. NO. 57 ON US 24
No. 4 ON SR 64



PERSONNEL TITLE PERSONNEL TITLE COUNTY Lucas DATE 23 Feb. 66
 Stanc _____
 Beck _____ S. R. #64 WEATHER Cool
 Brindley _____
 Schrader _____ SEC. Waterville - w. TEMP. 31°

DESCRIPTION Pts. To Central Pts. JOB NO.
 LEFT CENTER LINE RIGHT

DESCRIPTION	LEFT	CENTER LINE	RIGHT	JOB NO.
.1 Int. Mechanic St. E S.R. #64 (River Rd) Fd. R.R. Spk. To Surface		45.89'	S.E. To Shiner in P.P.	(D)
		46.49' 46.45'	N.W. To Shiner in T.P.	(D)
		87.04' 87.06'	S.W. To Shiner in P.P.	(D)
2 Int Farnsworth Rd. E S.R. #64 (River Rd) Fd. Hobara To Surface		45.76' OK	N.W. To Shiner in T.P.	(D)
		69.35' OK	S.W. To Shiner in P.P.	(D)
		30.32' 31.26'	S.E. To Shiner in P.P.	(D)
3 Int. Second St. E S.R. #64 (Farnsworth Rd) Fd. R.R. Nail To Surface		56.00' 56.03'	S.W. To N.E. Corn Brick Bldg.	(D)
		40.37' 40.35'	S.E. To Shiner in P.P.	(D)
		54.73' 54.70'	N.W. To Shiner in 27" Tree	(D)
4 Int Third St. E S.R. #64 (Farnsworth Rd) Fd. R.R. Spk. To Surface		41.93'	N.W. To Shiner in P.P.	(D)
		41.46' 41.45'	S.W. To Shiner in P.P.	(D)
		58.20' 58.14'	N.E. To S.W. Corn Spk To Bldg.	(D)
		72.02' 71.97'	N.W. To S.E. Corn Stock Bldg.	(D)
Int. S.R. #64 E S.R. #27 Fd. Hobara To Surface		35.03'	N. To Shiner in L.P.	(D)
		64.14'	S.W. To Shiner in T.P.	(D)
		52.98'	E.S.E. To Shiner in P.P.	(D)
5 Int. S.R. #64 E E Fourth St. Fd. Hobara To Surface		34.71' 34.67'	S.W. To Shiner in P.P.	(D)
		40.83' 40.80'	N.W. To "t" on curb at sidewalk	(D)
		40.49' 40.45'	N.E. To "t" on curb at sidewalk	(D)