

O.D.O.T. DISTRICT 2 SURVEY OFFICE (USE ONLY)

PERSONNEL

REFERENCE NO. 5

SHEET 7 OF 7

NOTES ROUSOS

DATE 4/18/02

ROUTE SR 64

H.C. HOMAN

WEATHER SUNNY

COUNTY LUCAS

R.C. ROUSOS

TEMP. 65°

TOWNSHIP 12 MILE RESERVE

SECTION RT 36

DWG BY NIESE PID \_\_\_\_\_

T 1 US R E

TYPE MONUMENT FD "X" ON MOBORA MON

~~ON SURFACE~~ - BELOW 1"

OFFSET  $\text{C}$  PAVEMENT ON LT : RT

- TO - EDGE PAVEMENT

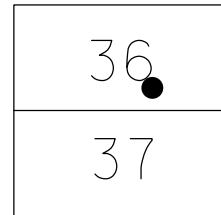
STATION: 23+93

HORIZ.DATUM: \_\_\_\_\_

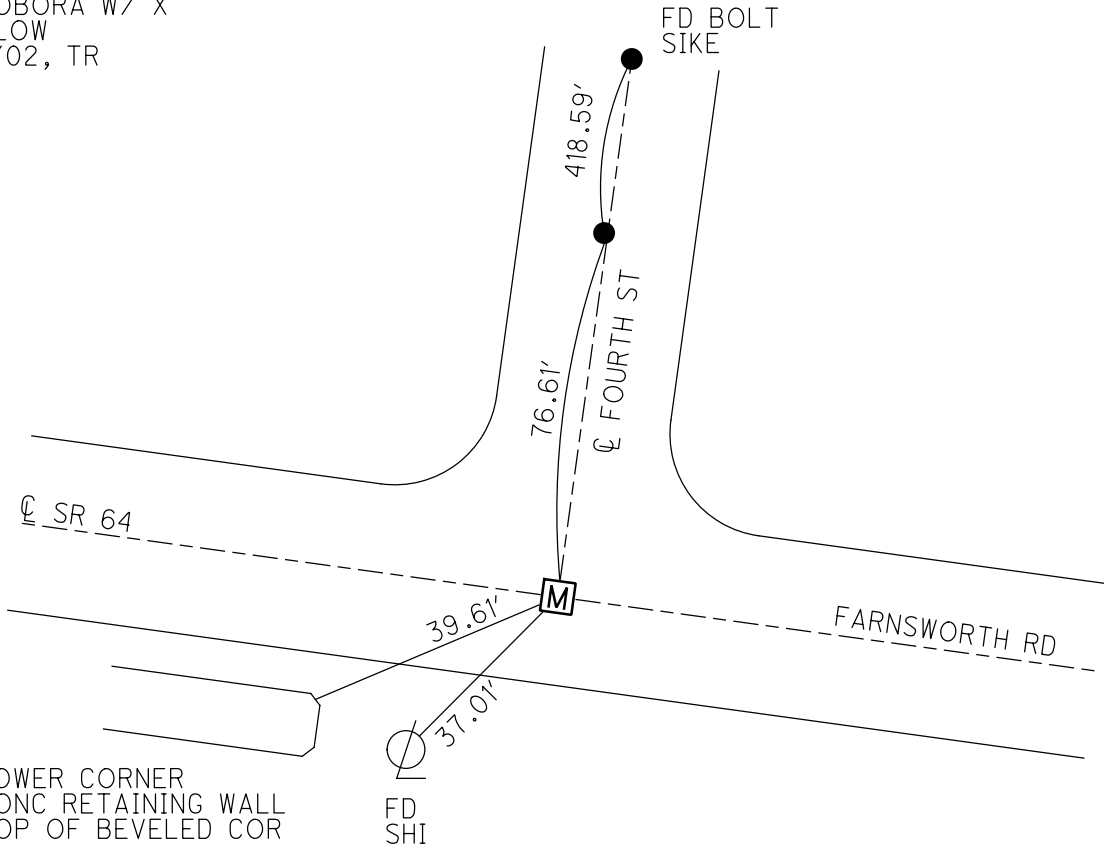
GEOID: \_\_\_\_\_

GRID: NORTHING: \_\_\_\_\_

EASTING: \_\_\_\_\_



RECORD:  
MONBOX SET  
FD MOBORA W/ X  
1" BELOW  
4/18/02, TR



O.D.O.T. DISTRICT 2 SURVEY OFFICE

PERSONNEL

REFERENCE NO. 5

SHEET 5 OF 47

NOTES ROUSOS

DATE 4-18-02

ROUTE S.R. 64

H.C. HOMAN

WEATHER SUNNY

COUNTY LUCAS

R.C. ROUSOS

TEMP. 65

TOWNSHIP WATERVILLE

SECTION \_\_\_\_\_

T \_\_\_ R \_\_\_

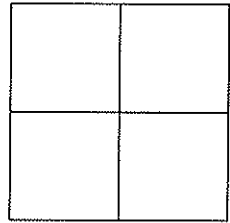
TYPE MONUMENT FD "X" MOBORA MONUMENT

~~ON SURFACE~~ - BELOW 1"

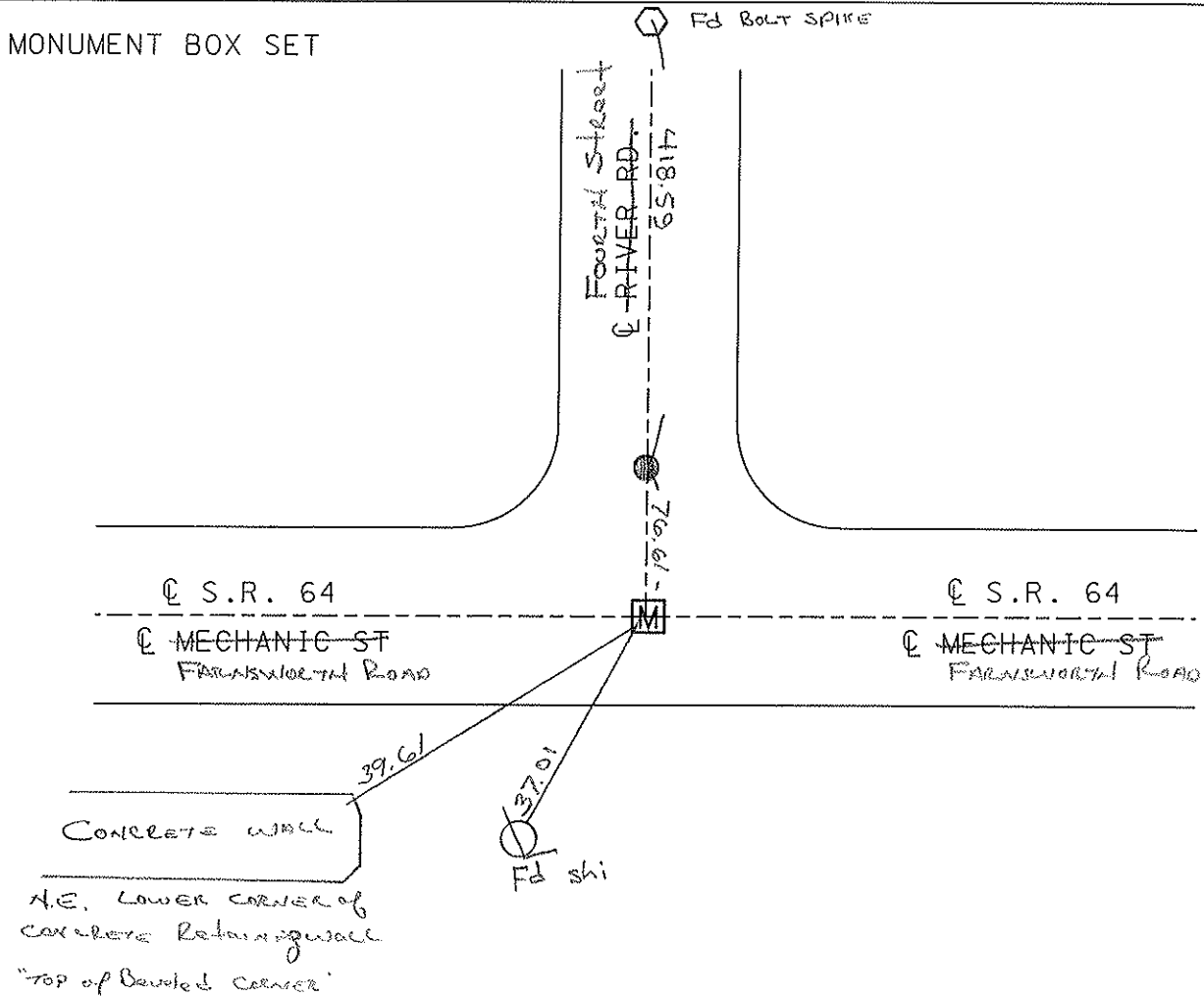
~~LEFT~~ - Q PAV'T - ~~RIGHT~~ ON

TO EDGE PAVEMENT

S.L.M. 23-93



MONUMENT BOX SET



O.D.O.T. DISTRICT 2 SURVEY OFFICE

PERSONNEL

REFERENCE NO. 5

SHEET 5 OF 49

NOTES LOEHRKE

H.C. STONE

R.C. CURTIS

DATE 8-14-91

WEATHER CLEAR

TEMP. +77

ROUTE S.R. 64

COUNTY LUCAS

TOWNSHIP WATERVILLE

SECTION \_\_\_\_\_

T \_\_\_\_\_ R \_\_\_\_\_

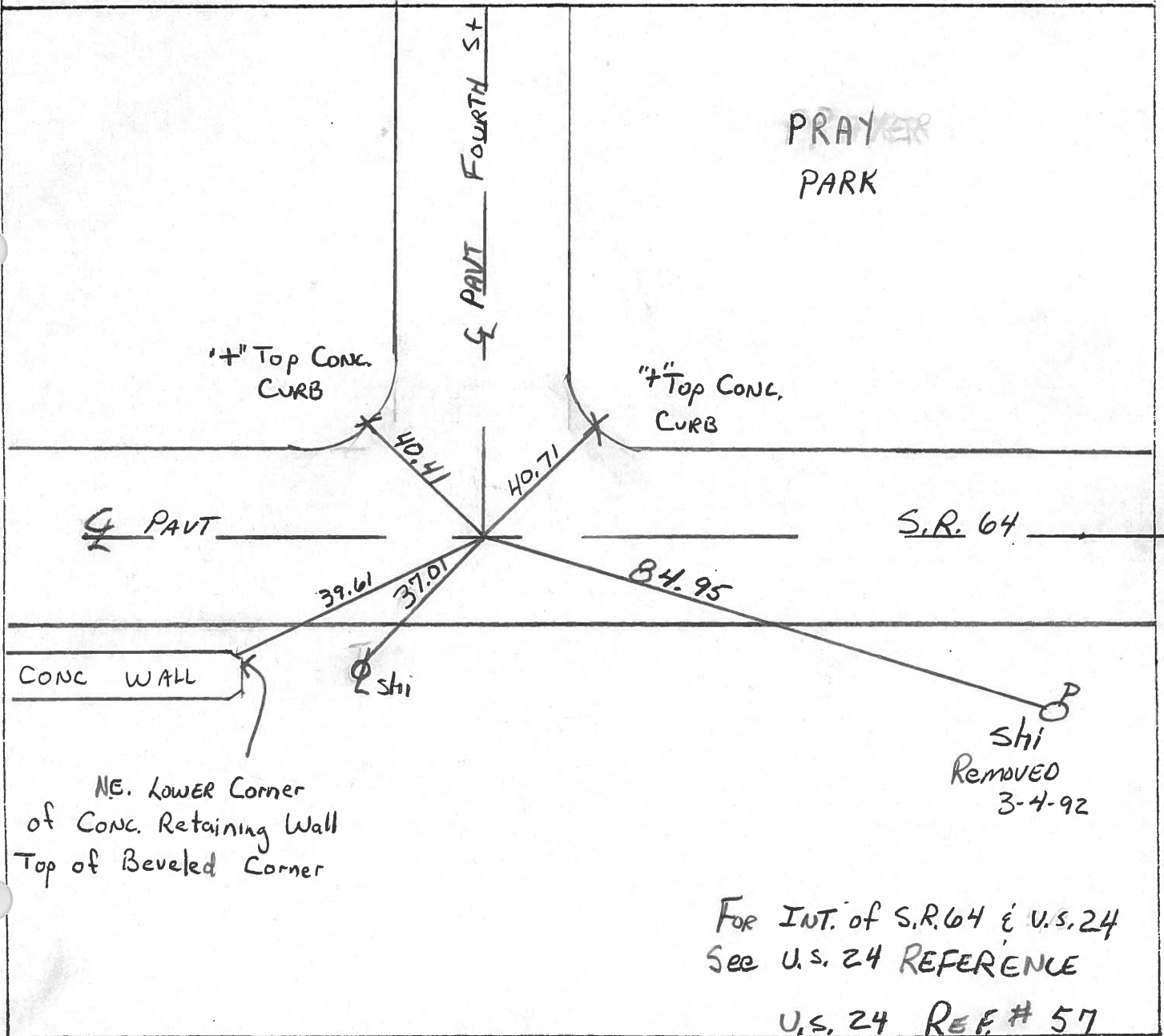
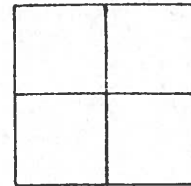
TYPE MONUMENT Bronz PLUG Set P.K. Nail 3-4-92

ON SURFACE - BELOW Yes

~~LEFT~~ - & PAV'T. - RIGHT Yes

TO EDGE PAVEMENT

S.L.M. 24+63



County LUCAS S.R. 64

Date 5-21-81

Township Waterville

Weather clear

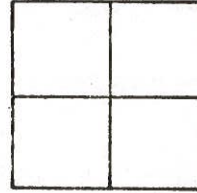
Section R.T. 37

Temp. +60°

T6N, R4E

IN VILLAGE LIMITS

Personnel S. Hoffmann



C. Loehrke

L. Householder

\_\_\_\_\_

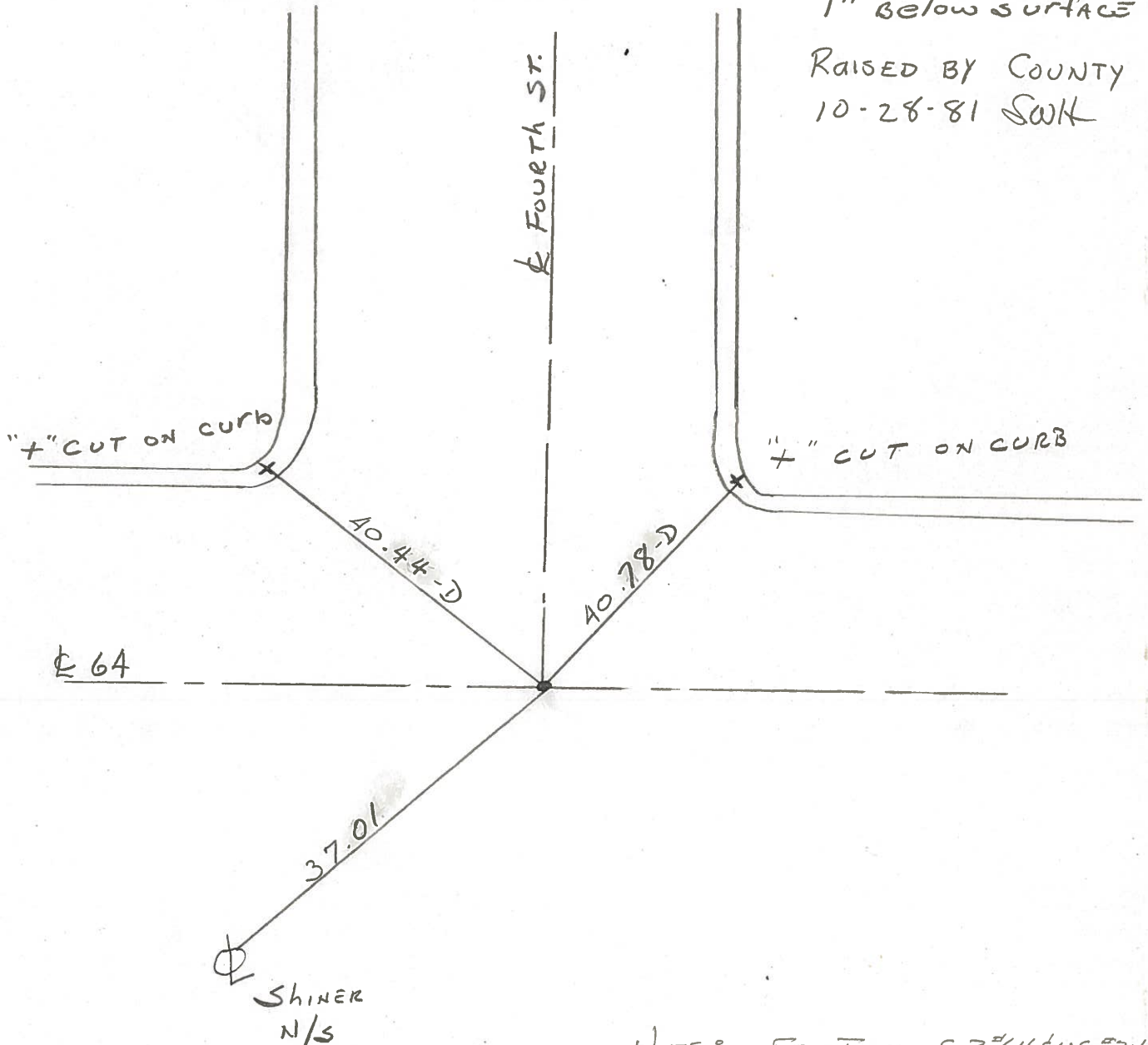
\_\_\_\_\_

#5

BEGIN POINT CHECK

Fd. BRASS plug  
1" below surface

RAISED BY COUNTY  
10-28-81 SWK

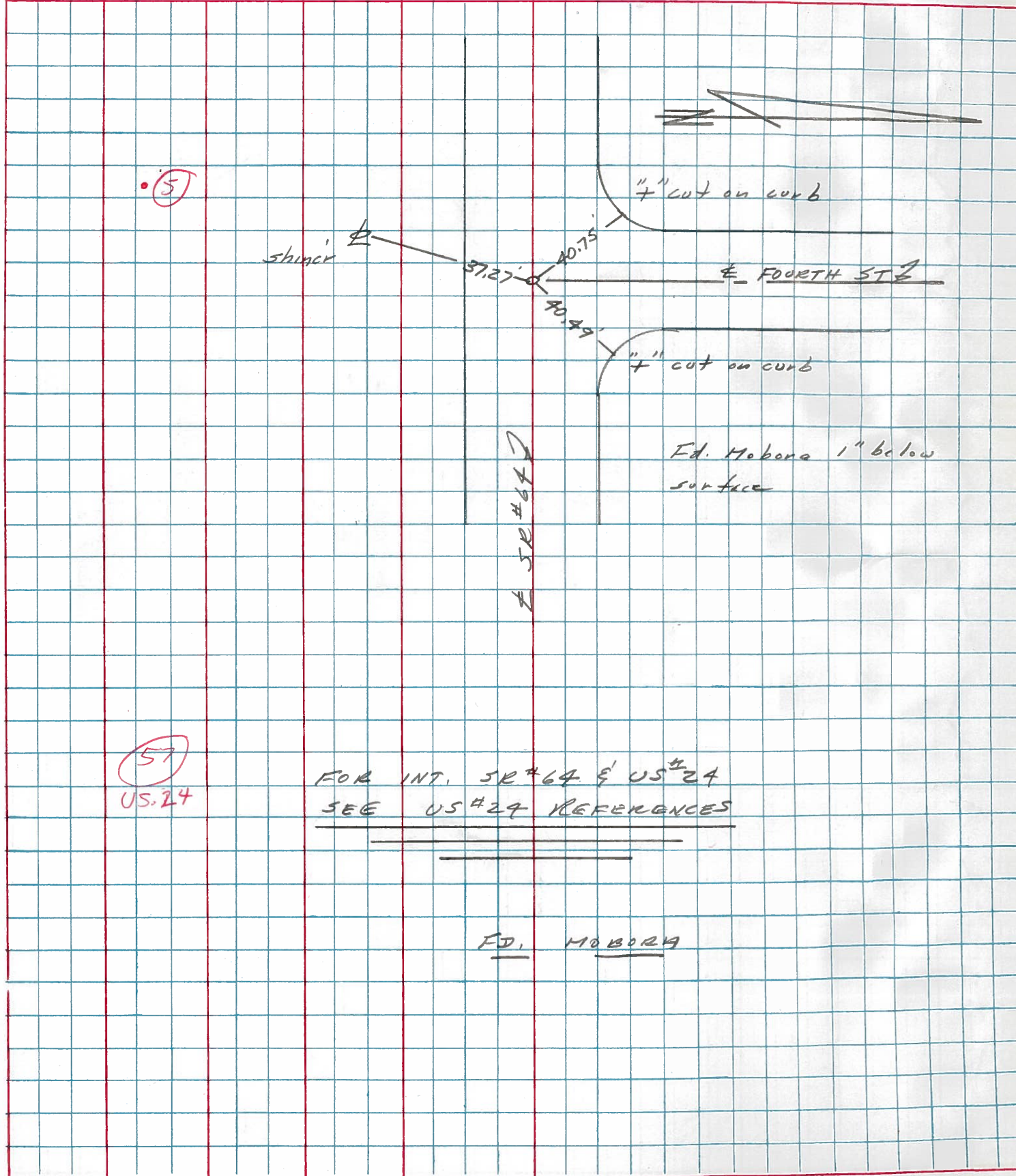


NOTE: FOR INTER. S.R. #64 & U.S. #24  
SEE U.S. 24 REFERENCES  
U.S. 24 # (57)

PERSONNEL	TITLE	PERSONNEL	TITLE	COUNTY	DATE	WEATHER	TEMP.
Stone				Lucas	23 March 77	Cold	30°
£				S. R. 64			
Crew				SEC. Waterville			

DESCRIPTION References to Control Points JOB NO. \_\_\_\_\_

LEFT CENTER LINE RIGHT



5

57  
US #24

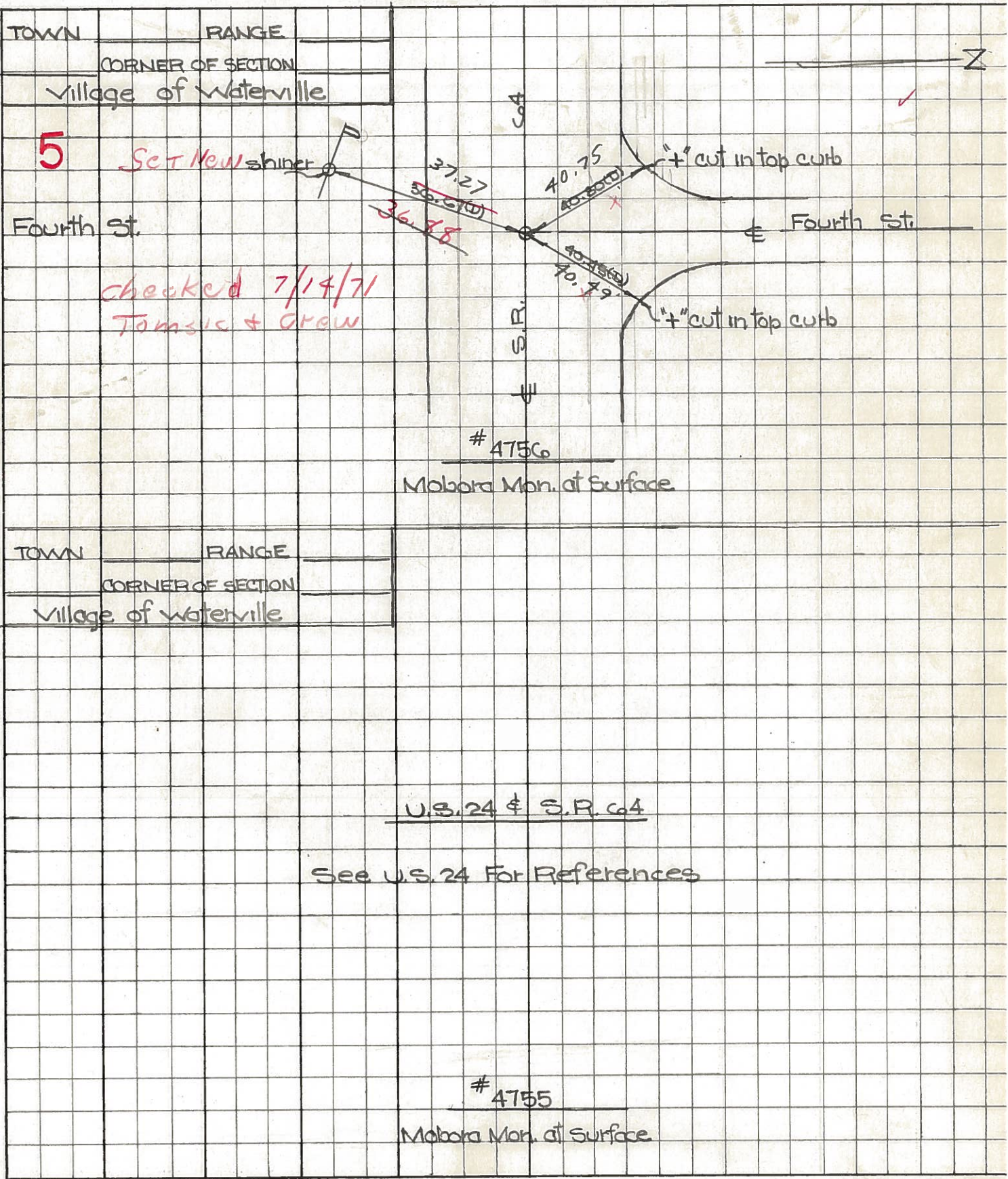
FOR INT. SR #64 & US #24  
SEE US #24 REFERENCES

ED. HOBANA



PERSONNEL	TITLE	PERSONNEL	TITLE	COUNTY	DATE	WEATHER	TEMP.
W. Denna				Lucas	July 29, 1968	mild	75°±
D. Curtis				Co4			
J. Teal							

DESCRIPTION S. R. Co4- Ref. Mon. & Control Points JOB NO. 02994(6)



U.S. 24 & S.R. Co4

See U.S. 24 For References



PERSONNEL	TITLE	PERSONNEL	TITLE	COUNTY	DATE	WEATHER	TEMP.
Stanc				Lucas	23 Feb. 66	Cool	31°
Beck				S. R. #64			
Brindley				SEC. Waterville - W.			
Subroder							

DESCRIPTION Pts. To Central Pts. JOB NO.

	LEFT	CENTER LINE	RIGHT	
1	Int. Mechanic St.	45.89'	S.E. To Shiner in P.P.	(D)
	§ S.R. #64 (River Rd)	46.49' 46.45	N.W. To Shiner in T.P.	(D)
	Fd. R.R. Sp. To Surface	87.04' 87.06	S.W. To Shiner in P.P.	(D)
2	Int Farnsworth Rd.	45.76' 0K	N.W. To Shiner in T.P.	(D)
	§ S.R. #64 (River Rd)	69.35' 0K	S.W. To Shiner in P.P.	(D)
	Fd. Hoborg To Surface	30.32' 31.26	S.E. To Shiner in P.P.	(D)
3	Int. Second St.	56.00' 56.02	S.W. To N.E. Cor. Brick Bldg.	(D)
	§ S.R. #64 (Farnsworth Rd)	40.37' 40.35	S.E. To Shiner in P.P.	(D)
	Fd. P.R. Nail To Surface	54.73' 54.70	N.W. To Shiner in 27" Tree	(D)
4	Int Third St.	<del>41.93'</del>	<del>N.W. To Shiner in P.P.</del>	<del>(D)</del>
	§ S.R. #64 (Farnsworth Rd)	41.46' 41.15	S.W. To Shiner in P.P.	(D)
	Fd. R.R. Sp. To Surface	58.20' 58.14	N.E. To S.W. Cor. Gen. Ship To Bldg.	(D)
		72.02' 71.97	N.W. To S.E. Cor. Brick Bldg.	(D)
5	Int S.R. #64 § S.R. #21	35.03'	N. To Shiner in L.P.	(D)
	Fd. Hoborg To Surface	64.14'	S.W. To Shiner in T.P.	(D)
		52.98'	E.S.E. To Shiner in P.P.	(D)
5	Int S.R. #64 §	36.71' 36.67	S.W. To Shiner in P.P.	(D)
	§ Fourth St.	40.83' 40.80	N.W. To "f" on curb at sidewalk	(D)
	Fd. Hoborg To Surface	40.49' 40.45	N.E. To "f" on curb at sidewalk	(D)