

O.D.O.T. DISTRICT 2 SURVEY OFFICE (USE ONLY)

PERSONNEL

REFERENCE NO. 6

SHEET 8 OF 18

NOTES ROUSOS

DATE 5-01-02

ROUTE SR 64

H.C. HOMAN

WEATHER CLOUDY

COUNTY LUCAS

R.C. ROUSOS

TEMP. 60

TOWNSHIP WATERVILLE

DWG BY RHOADES

PID -----

SECTION RT 37

T N R E

TYPE MONUMENT P.K./WASHER

ON SURFACE - ~~BELOW~~ ON

OFFSET $\text{\textcircled{C}}$ PAVEMENT ON LT : RT

 TO EDGE PAVEMENT

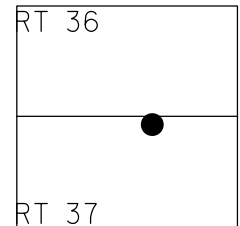
STATION: 27+59

HORZ.DATUM: -----

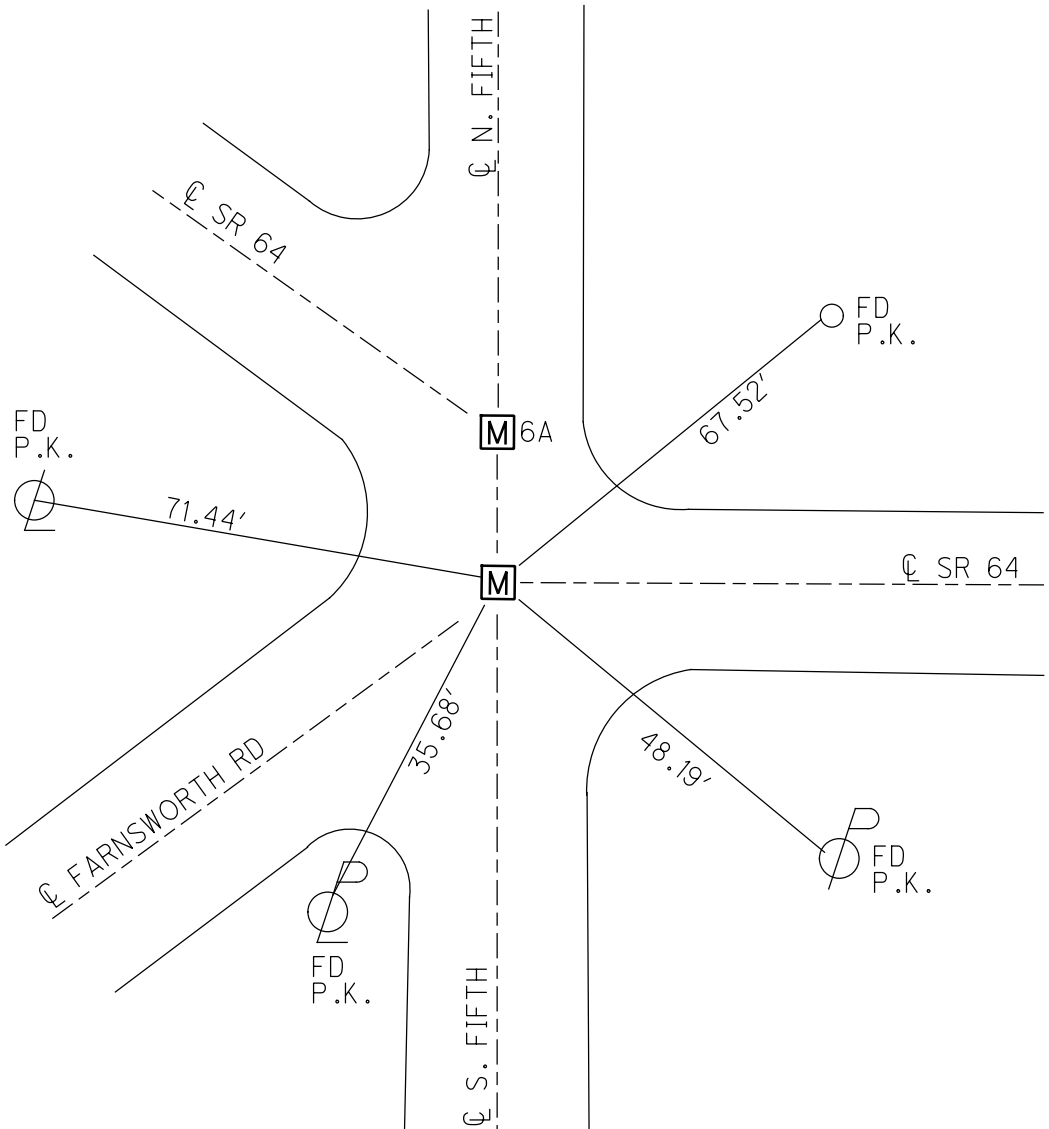
GEOID: -----

GRID: NORTHING: -----

EASTING: -----



- RECORD:
 FD MOBORA MON.
 7/30/68, DC
 FD MOBARA MON.
 1" DOWN
 3/23/77, IRS
 FD BRASS PLUGS
 1" DOWN
 5/21/81, CL
 FD R.R. SPIKE
 10/28/81, SWH
 FD P.K. NAIL
 8/14/91, CL
 SET P.K. NAIL
 3/4/92, CL
 FD MONBOX
 W/IPIN
 5/01/02, DCH



DIST. 6-6A=25.87'

O.D.O.T. DISTRICT 2 SURVEY OFFICE

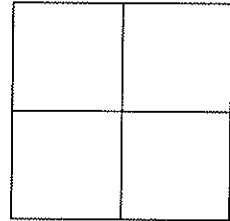
PERSONNEL

NOTES ROUSOS
 H.C. HOMAN
 R.C. ROUSOS

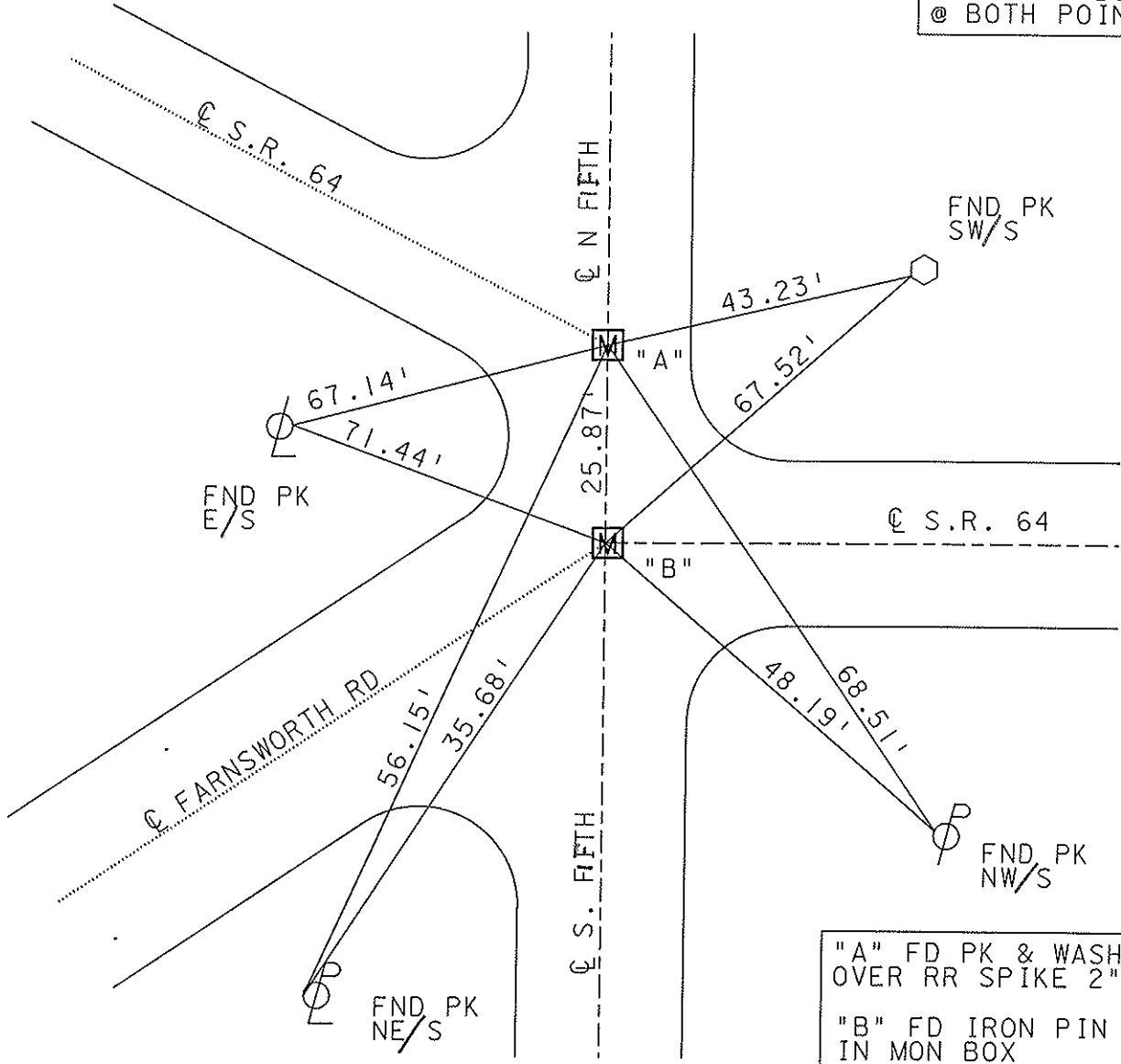
REFERENCE NO. 6
 DATE 5-01-02
 WEATHER CLOUDY
 TEMP. 60

SHEET 6 OF 47
 ROUTE S.R. 64
 COUNTY LUCAS
 TOWNSHIP WATERVILLE
 SECTION _____
 T ___ R ___

TYPE MONUMENT SEE DRAWING
~~ON SURFACE~~ - BELOW 2"
~~LEFT - Q PAV'T - RIGHT~~ ON
TO EDGE PAVEMENT
 S.L.M. 27+59



MONUMENT BOX SET
 @ BOTH POINTS



"A" FD PK & WASHER
 OVER RR SPIKE 2" DOWN
 "B" FD IRON PIN
 IN MON BOX

O.D.O.T. DISTRICT 2 SURVEY OFFICE

PERSONNEL

REFERENCE NO. 6

SHEET 6 OF 49

NOTES LOG HAKE

H.C. STONE

R.C. CURTIS

DATE 8-14-91

WEATHER CLEAR

TEMP. +77

ROUTE S.R. 64

COUNTY LUCAS

TOWNSHIP WATERVILLE

SECTION _____

T _____ R _____

TYPE MONUMENT P.K.'s

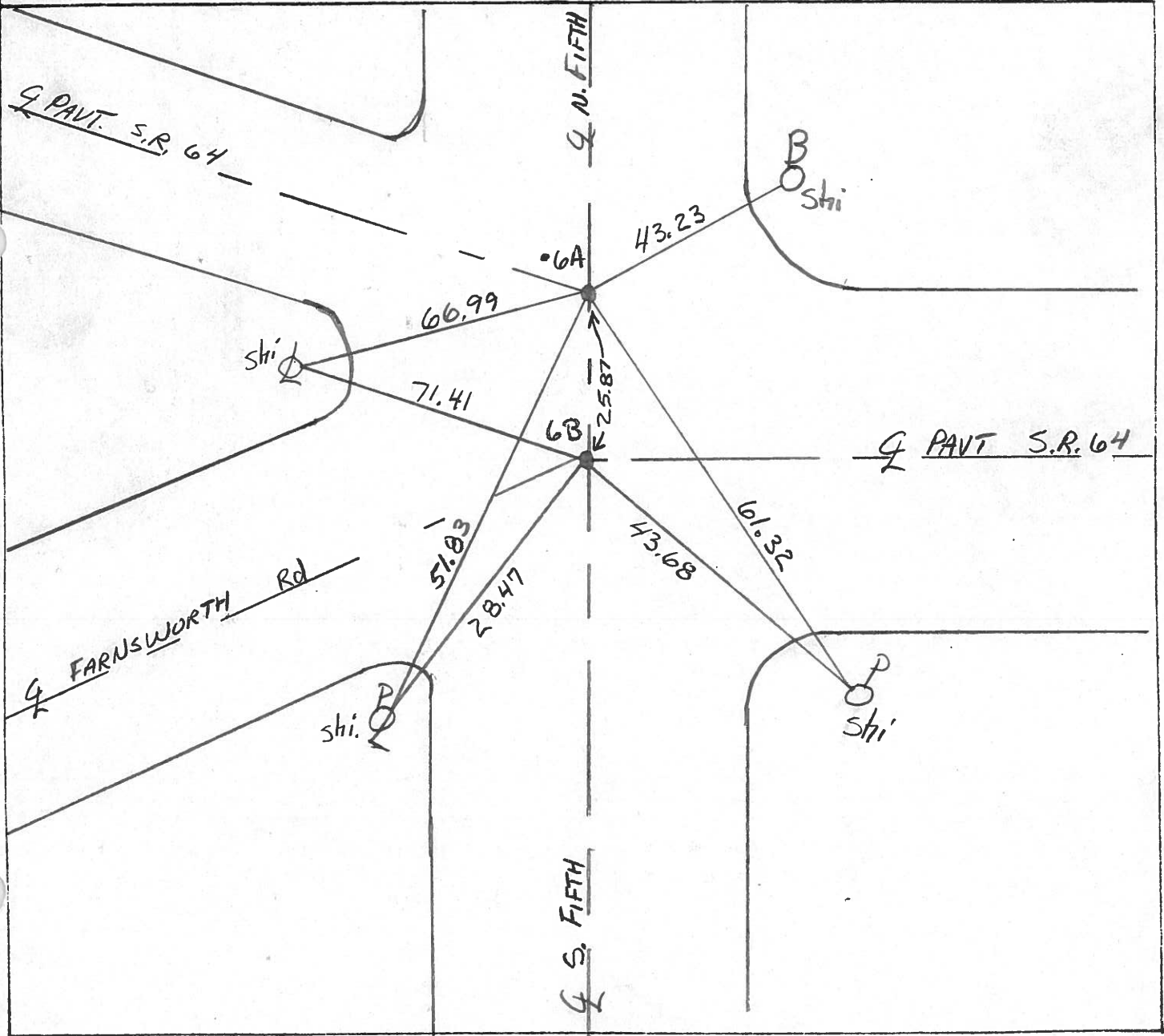
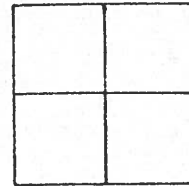
Set P.K. Nails
3-4-92

ON SURFACE - BELOW Yes

LEFT - & PAV'T. - RIGHT Yes

TO _____ EDGE PAVEMENT

S.L.M. 28+29



County LUCAS S.R. 64

Date 5-21-81

Township WATERVILLE

Weather CLEAR

Section R.T. 37

Temp. 60°

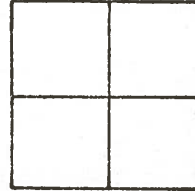
T6N, R6E

IN VILLAGE LIMITS

Personnel S. HOFFMAN

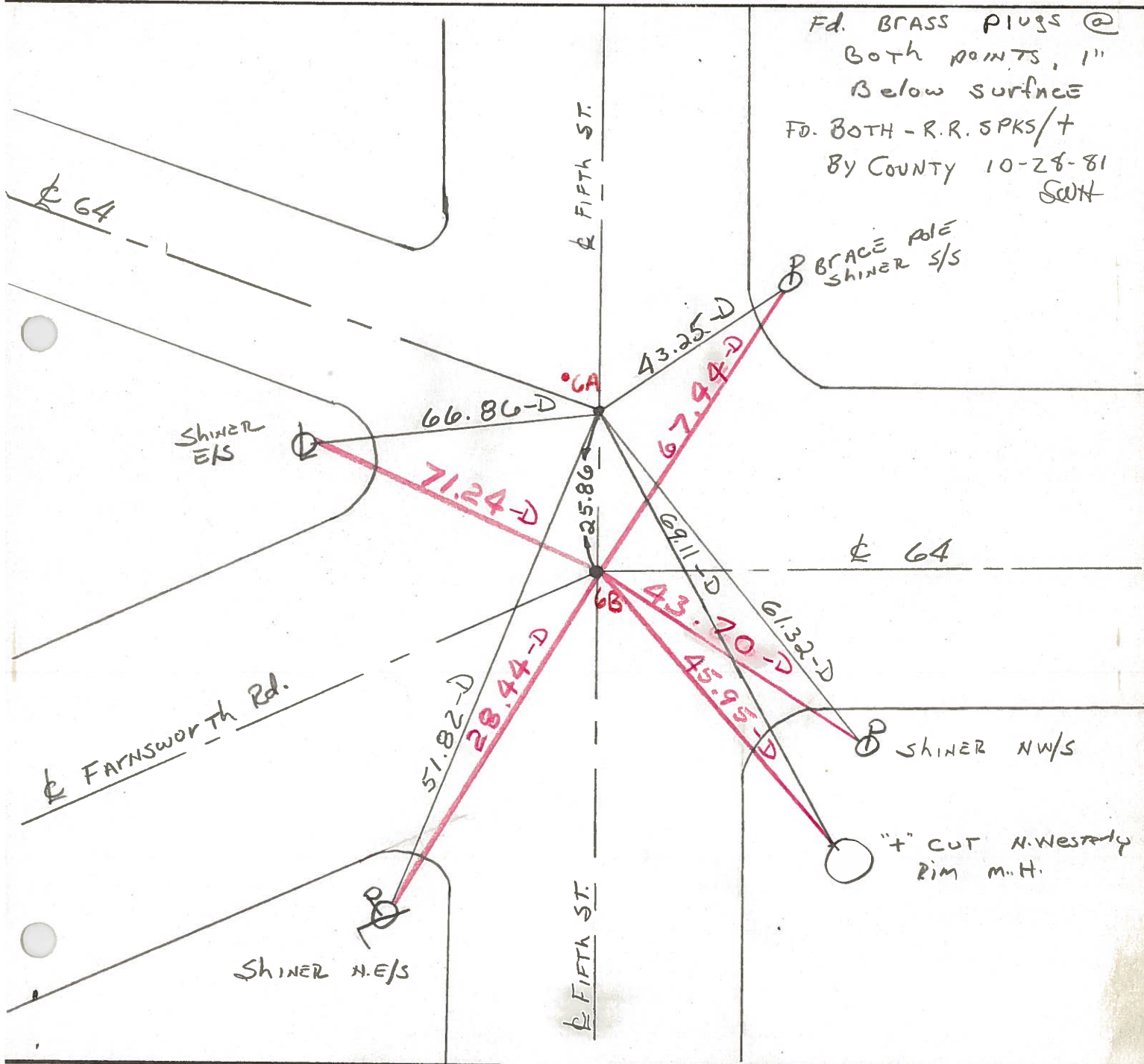
C. LOEHRKE

J. HOUSEHOLDER



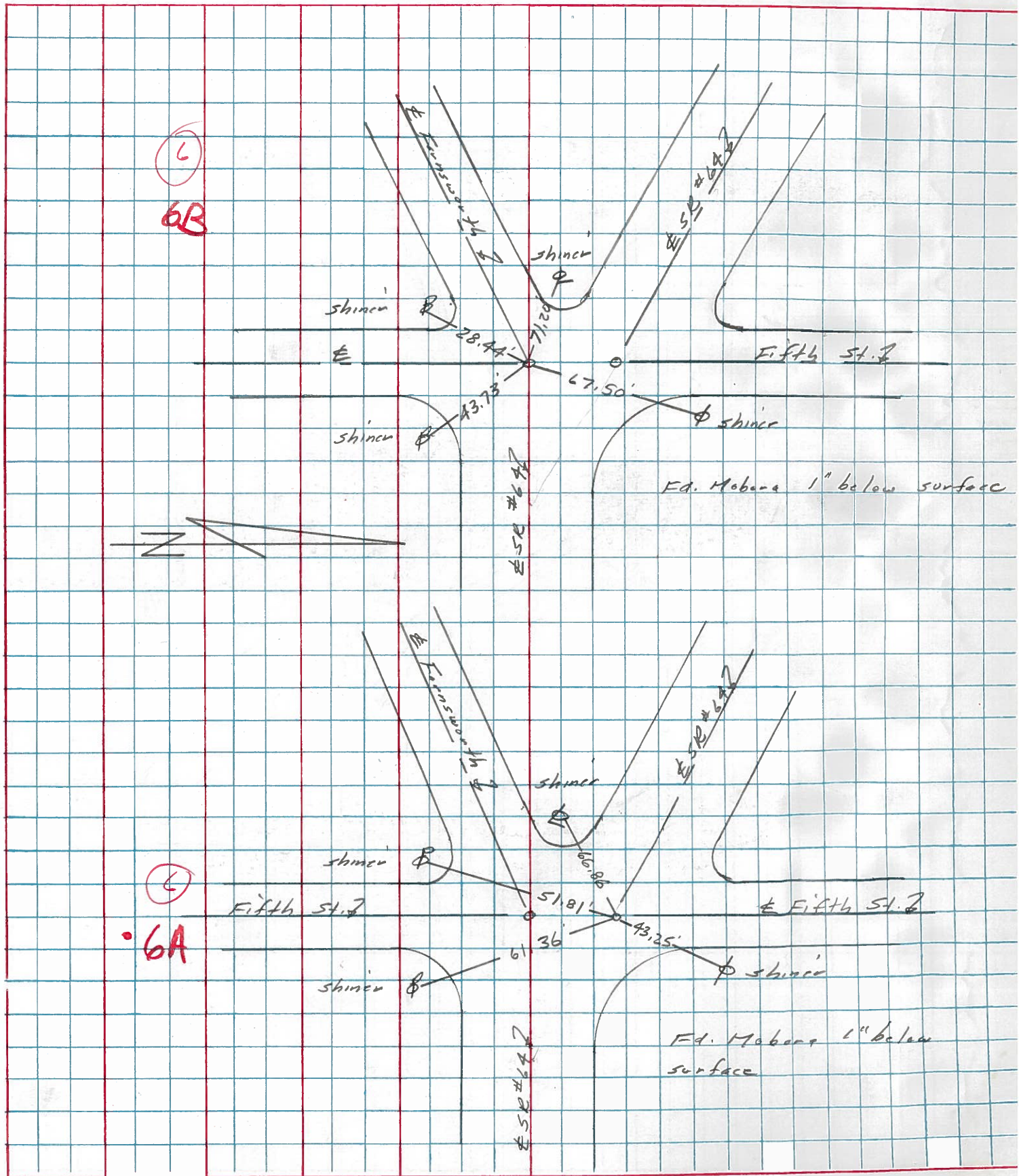
#6

Fd. BRASS PLUGS @
Both points, 1"
Below surface
FD. BOTH - R.R. SPKS/+
BY COUNTY 10-28-81
SWH

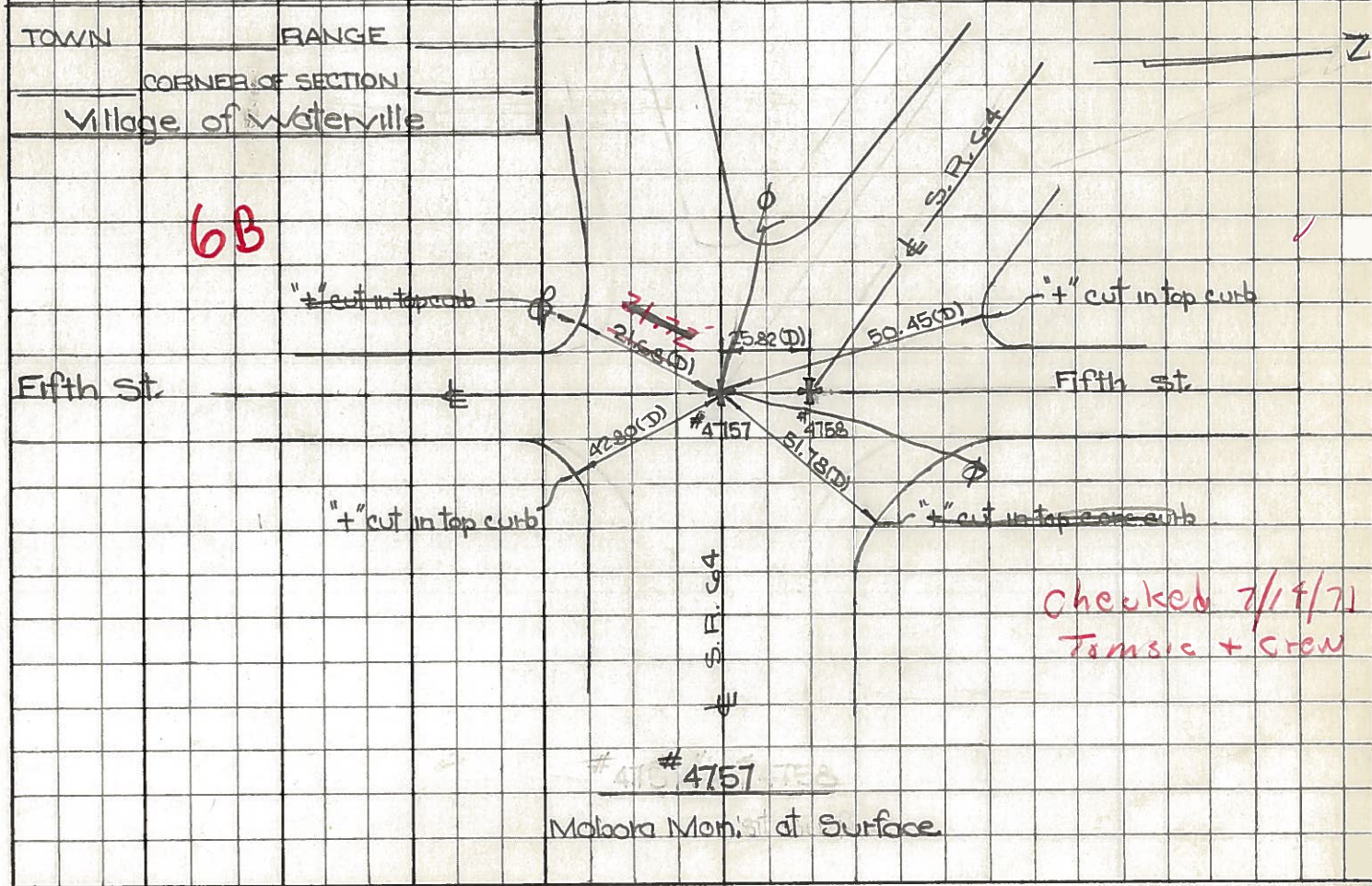
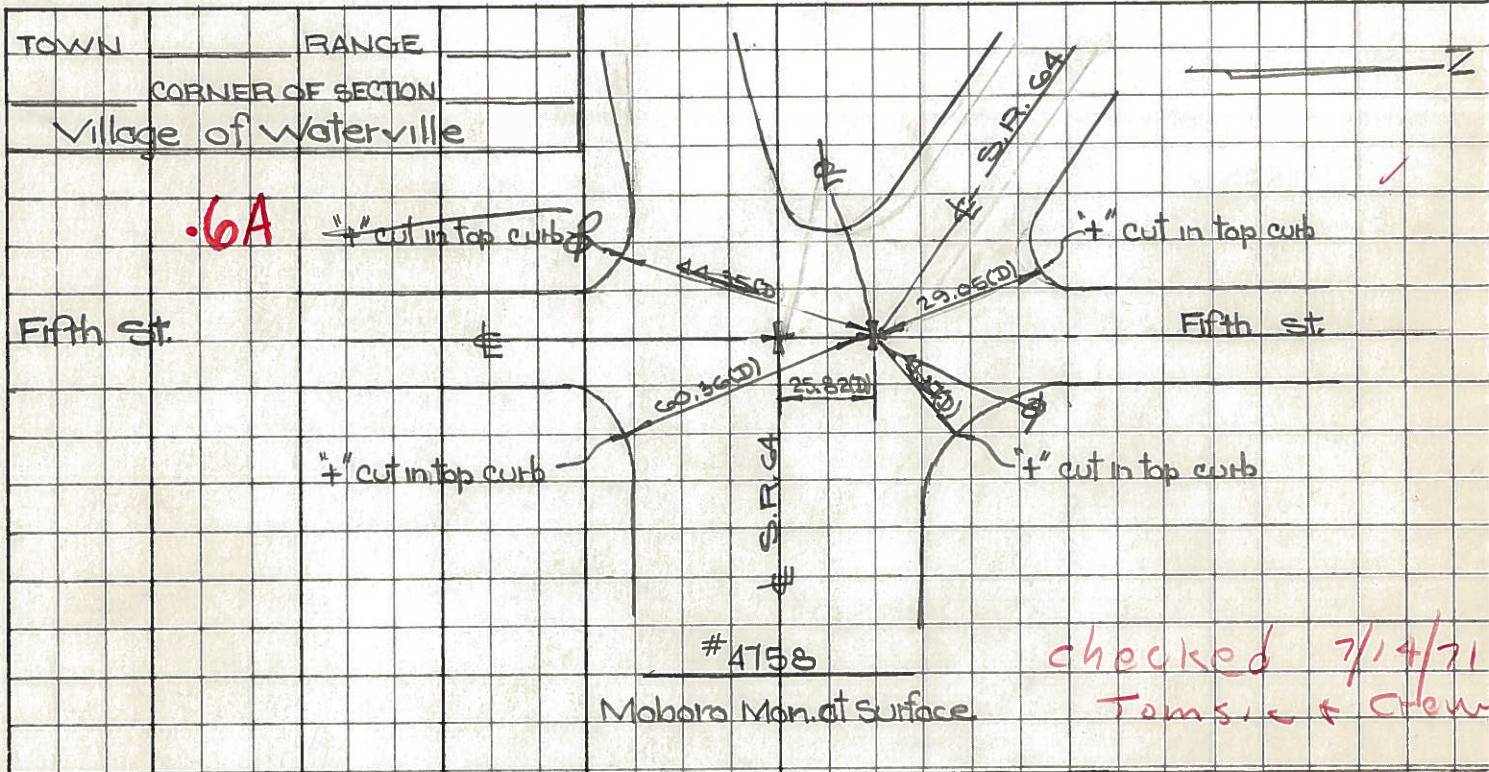


PERSONNEL	TITLE	PERSONNEL	TITLE	COUNTY	DATE	WEATHER	TEMP.
Stone				Lucas	23 March 77	Cloud	35°
Crew				S. R. 67			
				SEC. Watrville			

DESCRIPTION References to Control Points JOB NO. _____
 LEFT CENTER LINE RIGHT



PERSONNEL TITLE PERSONNEL TITLE COUNTY Lucas DATE July 30, 1968
 W. Benno _____
 D. Curtis _____ S. R. Co4 WEATHER mild
 J. Teal _____ SEC. _____ TEMP. 70°±
 DESCRIPTION S.R. Co4 - Ref. Mon. & Control Points JOB NO. 02994(0)



PERSONNEL TITLE PERSONNEL TITLE COUNTY Lucas DATE 23 Feb. 66
 Stone Beck #64 WEATHER Cool
 Brindley Schreder Waterville - W. TEMP. 32°

DESCRIPTION Rets. To Control Pts. JOB NO.
 LEFT CENTER LINE RIGHT

6B

Int. Fifth St. 42.83' S.E. To "4" on Con. Curb (D)
 on Beck Tang. (E.) 51.81' N.E. To "4" on Con. Curb (D)
 Also Int. Farnsworth Rd. 21.67' S.W. To "4" on Con. Curb (D)
 Fd. Mabara To Surface 50.43' N.W. To "4" on Con. Curb (D)
 25.82' N. To Mabara Mon. (D)

6A

Int. Fifth St. 60.39' S.E. To "4" on Con. Curb (D)
 on Fud. Tang. (W) 41.41' E.N.E. To "4" on Con. Curb (D)
 Fd. Mabara To Surface 44.35' S.W. To "4" on Con. Curb (D)
 29.03' N.W. To "4" on Con. Curb (D)
 25.82' S. To Mabara Mon (D)

8

P.I. $\Delta = 0^{\circ}03' \text{ Lt.}$ 26.79' N.N.W. To Shiner in T.P. (D)
 Sta. 48+82.55 56.15' E.N.E. To Shiner in 40" Tice (D)
 Fd. 1" I. Pin in Con. 51.32' E.S.E. To Shiner in P.P. (D)
 71.14' W.S.W. To Shiner in P.P. (D)

9

P.I. $\Delta = 0^{\circ}02' \text{ Rt.}$ 22.34' N.W. To "4" on Con. Curb (D)
 Sta. 59+69.14 12.39' S. To "4" on Con. Curb (D)
 Fd. 1" I. Pin in Con. 24.98' N.E. To "4" on Con. Curb (D)

226

Int. Waterville-Monclova Rd. 57.78' ~~N. To Shiner in P.P. (D)~~
 Waterville Corp. line 40.40' N.N.E. To Con. Ref. Mon. (D)
 $\Delta = 0^{\circ}15' \text{ Rt.}$ 34.54' ~~N.E. To "4" in RR Spk. N. Edge (D)~~
 Fd. 1" I. Pin in Con. 36.64' S.S.E. to "4" on Lu. Co. B.M. (D)
 To Surface N.W. cor. Ref. Mon

10