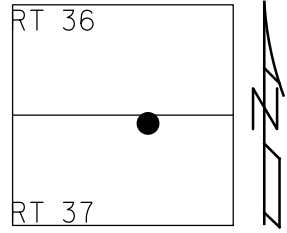


O.D.O.T. DISTRICT 2 SURVEY OFFICE (USE ONLY)

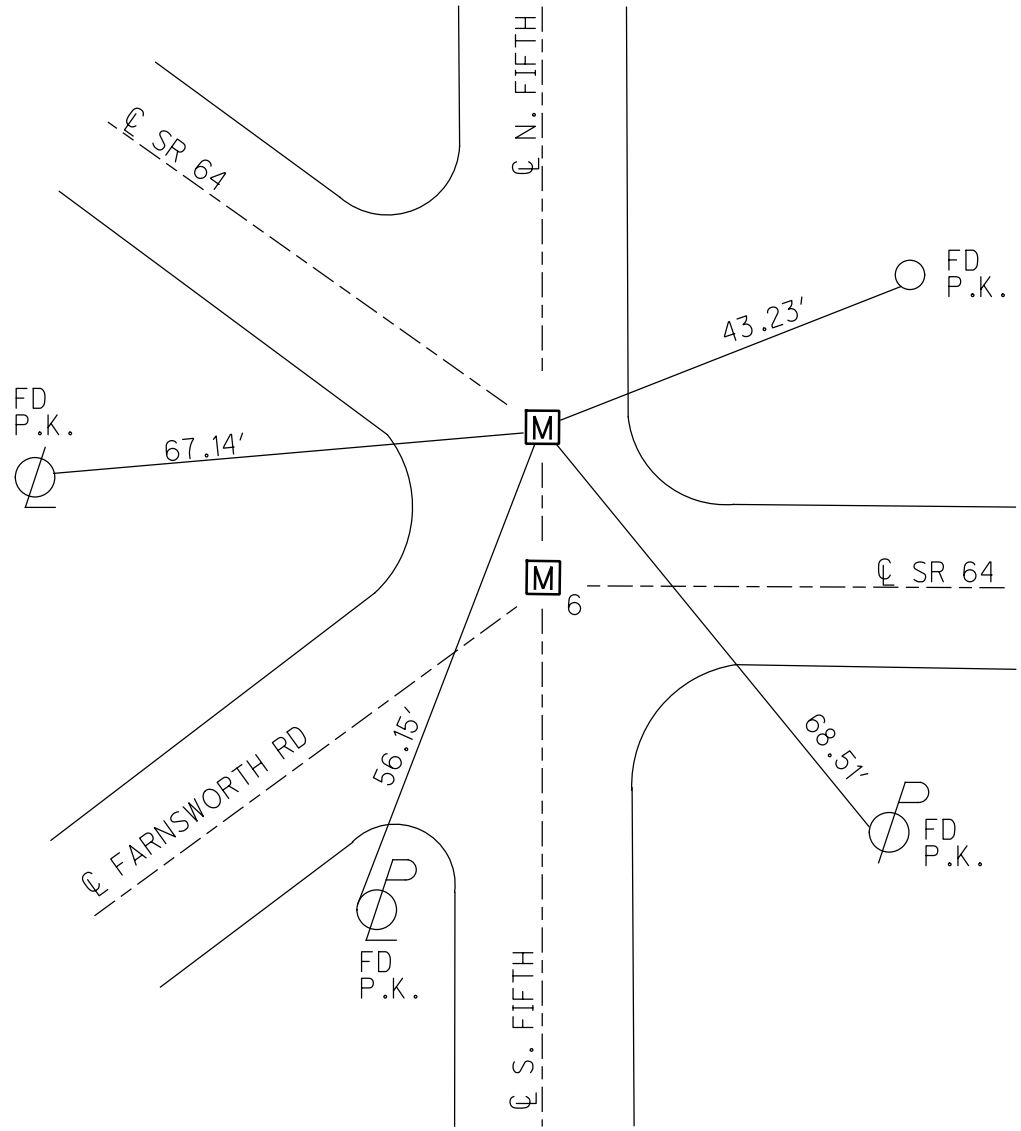
PERSONNEL \_\_\_\_\_ REFERENCE NO. 6 A SHEET 9 OF 18  
 NOTES ROUSOS DATE 5-01-02 ROUTE SR 64  
 H.C. HOMAN WEATHER CLOUDY COUNTY LUCAS  
 R.C. ROUSOS TEMP. 60 TOWNSHIP WATERVILLE  
 SECTION RT 37  
 DWG BY RHOADES PID \_\_\_\_\_ T    N    R    E   

TYPE MONUMENT MONBOX W/IPIN  
 ON SURFACE - ~~BELOW~~ ON  
 OFFSET  $\odot$  PAVEMENT ON LT : RT  
       TO        EDGE PAVEMENT  
 STATION: 27+84.81  
 HORZ. DATUM: \_\_\_\_\_ GEOID: \_\_\_\_\_  
 GRID: NORTHING: \_\_\_\_\_ EASTING: \_\_\_\_\_



RECORD:  
 FD MOBORA MON.  
 7/30/68, DC  
 FD MOBARA MON.  
 1" DOWN  
 3/23/77, IRS  
 FD BRASS PLUGS  
 1" DOWN  
 5/21/81, CL  
 FD R.R. SPIKE  
 10/28/81, SWH  
 FD P.K. NAIL  
 8/14/91, CL  
 SET P.K. NAIL  
 3/4/92, CL  
 FD MONBOX  
 W/IPIN  
 5/01/02, DCH

DIST. 6-6A=25.87'



O.D.O.T. DISTRICT 2 SURVEY OFFICE

PERSONNEL

REFERENCE NO. 6

SHEET 6 OF 47

NOTES ROUSOS

DATE 5-01-02

ROUTE S.R. 64

H.C. HOMAN

WEATHER CLOUDY

COUNTY LUCAS

R.C. ROUSOS

TEMP. 60

TOWNSHIP WATERVILLE

SECTION \_\_\_\_\_

T \_\_\_\_\_ R \_\_\_\_\_

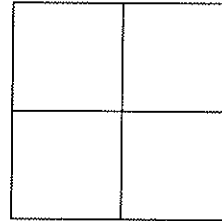
TYPE MONUMENT \_\_\_\_\_ SEE DRAWING \_\_\_\_\_

~~ON SURFACE~~ - BELOW \_\_\_\_\_ 2" \_\_\_\_\_

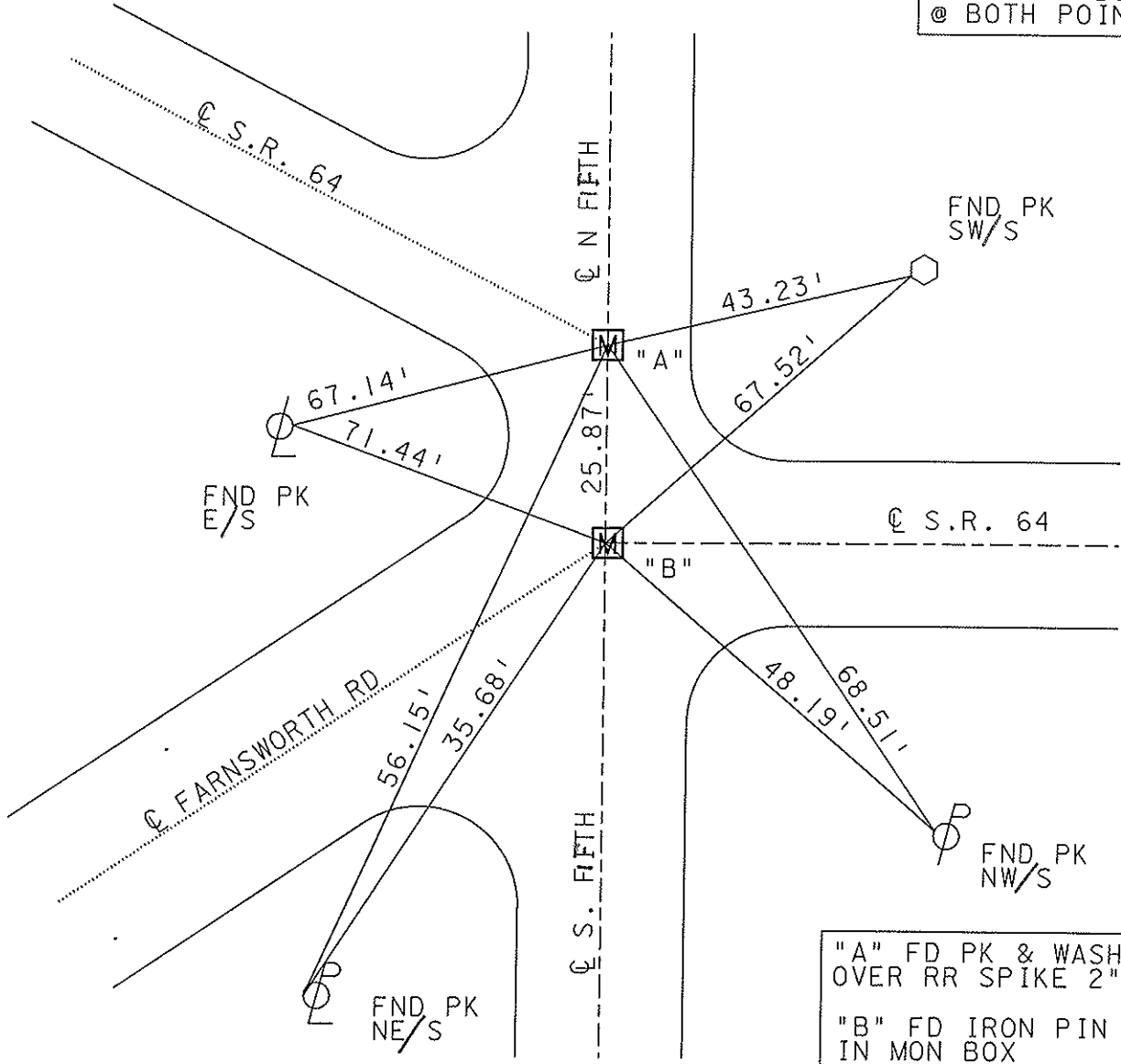
~~LEFT~~ - Q PAV'T - ~~RIGHT~~ \_\_\_\_\_ ON \_\_\_\_\_

\_\_\_\_\_ TO \_\_\_\_\_ EDGE PAVEMENT \_\_\_\_\_

S.L.M. \_\_\_\_\_ 27+59 \_\_\_\_\_



MONUMENT BOX SET  
@ BOTH POINTS



"A" FD PK & WASHER  
OVER RR SPIKE 2" DOWN  
"B" FD IRON PIN  
IN MON BOX

O.D.O.T. DISTRICT 2 SURVEY OFFICE

PERSONNEL

REFERENCE NO. 6

SHEET 6 OF 49

NOTES LOG HAKE

H.C. STONE

R.C. CURTIS

DATE 8-14-91

WEATHER CLEAR

TEMP. +77

ROUTE S.R. 64

COUNTY LUCAS

TOWNSHIP WATERVILLE

SECTION \_\_\_\_\_

T \_\_\_\_\_ R \_\_\_\_\_

TYPE MONUMENT P.K.'s

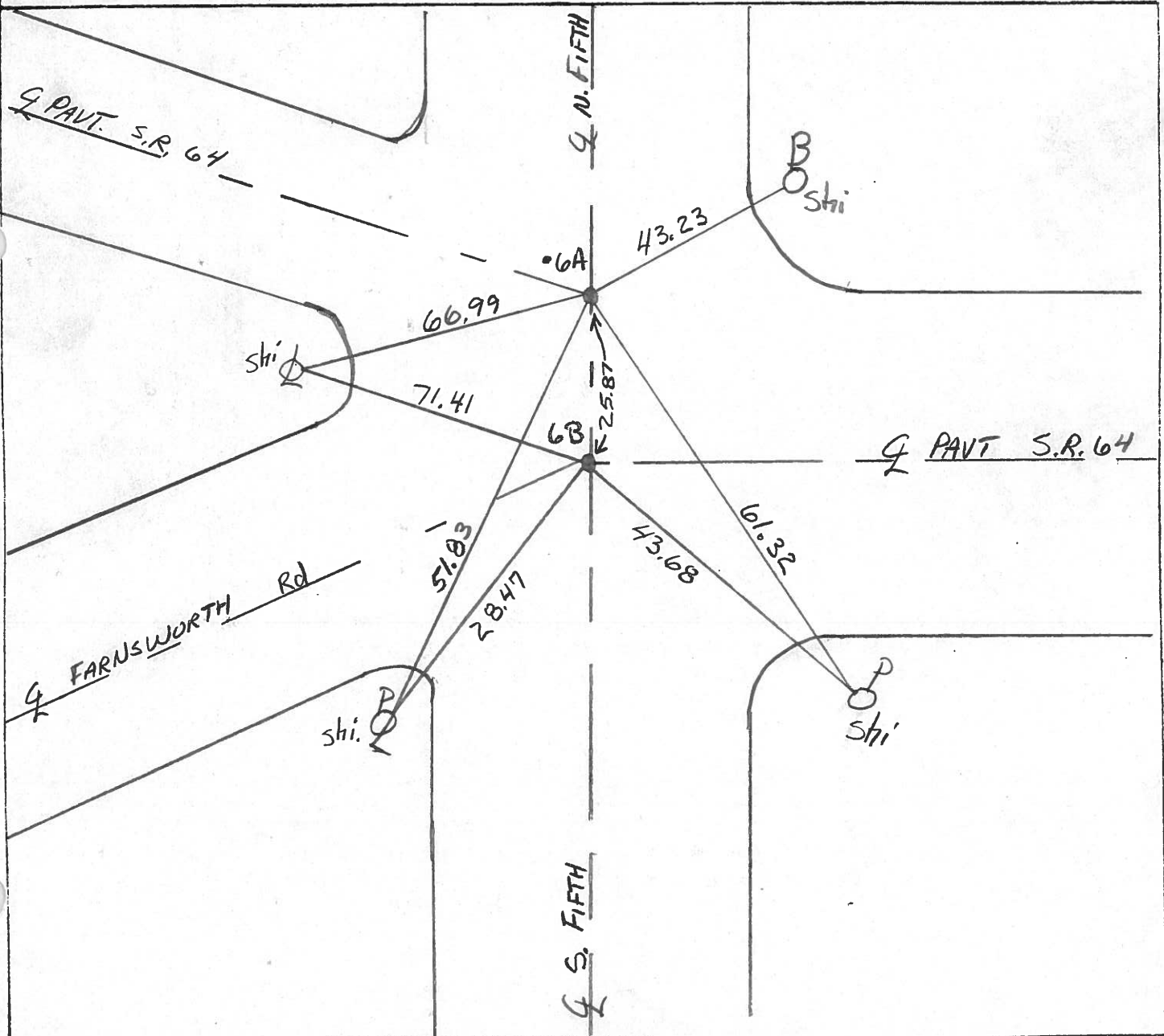
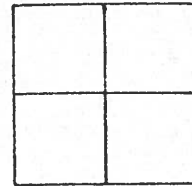
Set P.K. Nails  
3-4-92

ON SURFACE - BELOW Yes

LEFT - & PAV'T. - RIGHT Yes

TO EDGE PAVEMENT

S.L.M. 28+29



County LUCAS S.R. 64

Date 5-21-81

Township WATERVILLE

Weather CLEAR

Section R.T. 37

Temp. 60°

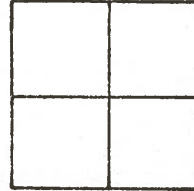
T6N, R6E

IN VILLAGE LIMITS

Personnel S. HOFFMAN

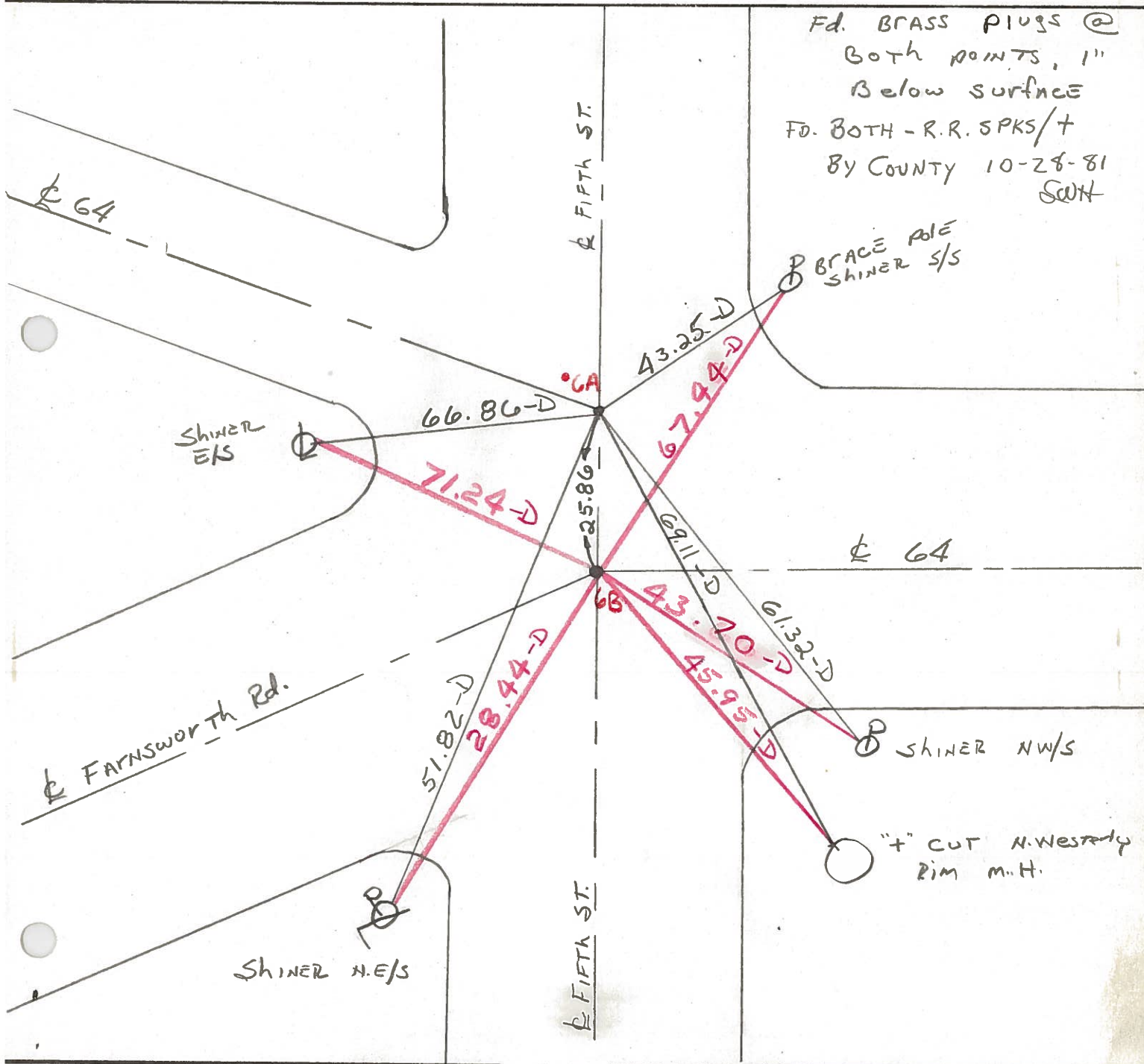
C. LOEHRKE

J. HOUSEHOLDER



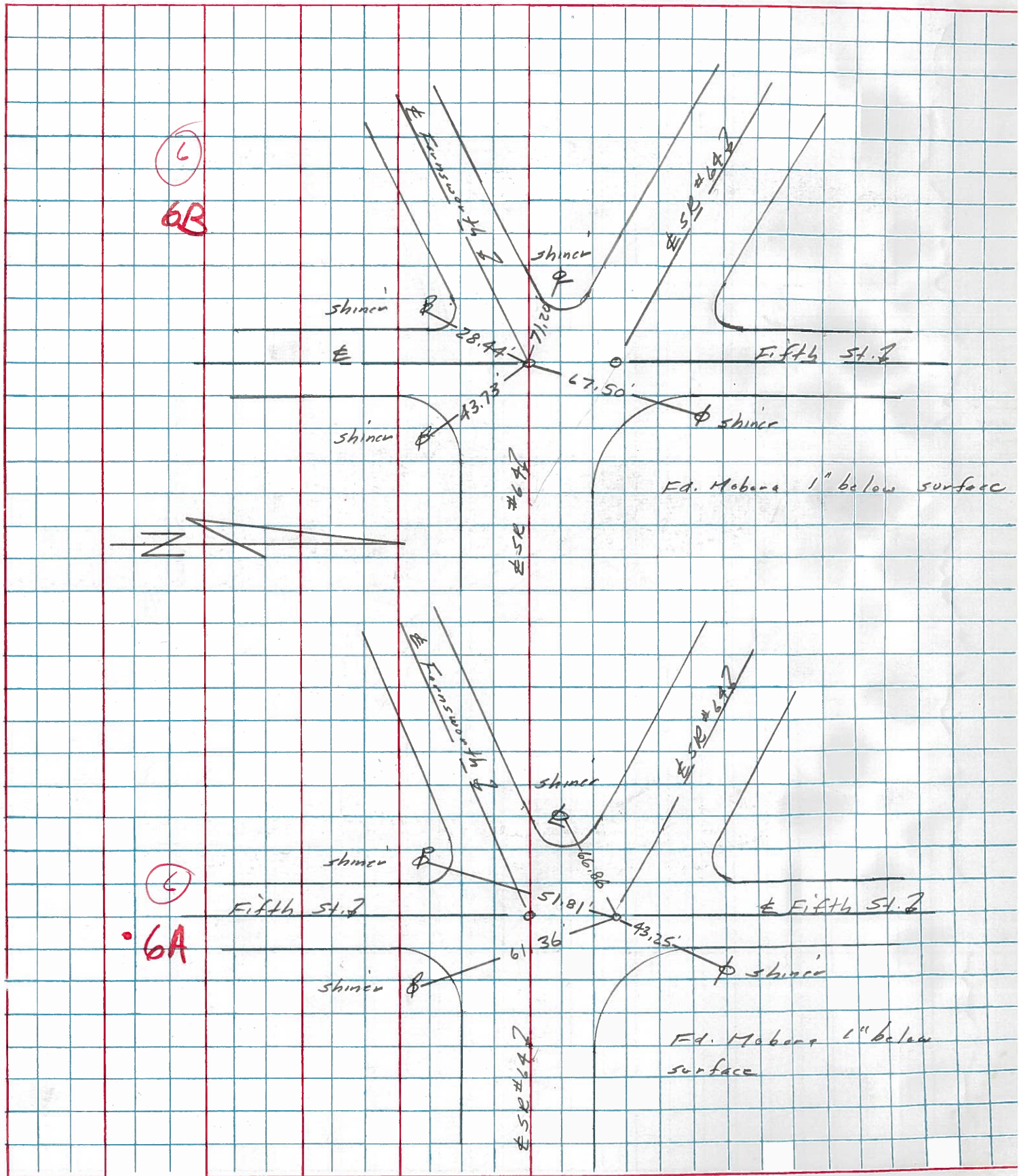
#6

Fd. BRASS PLUGS @  
Both points, 1"  
Below surface  
FD. BOTH - R.R. SPKS/+  
BY COUNTY 10-28-81  
SWH



PERSONNEL	TITLE	PERSONNEL	TITLE	COUNTY	DATE	WEATHER	TEMP.
Stone				Lucas	23 March 77	Cloud	35°
+				S. R. 67			
Crew				Sec. Watrville			

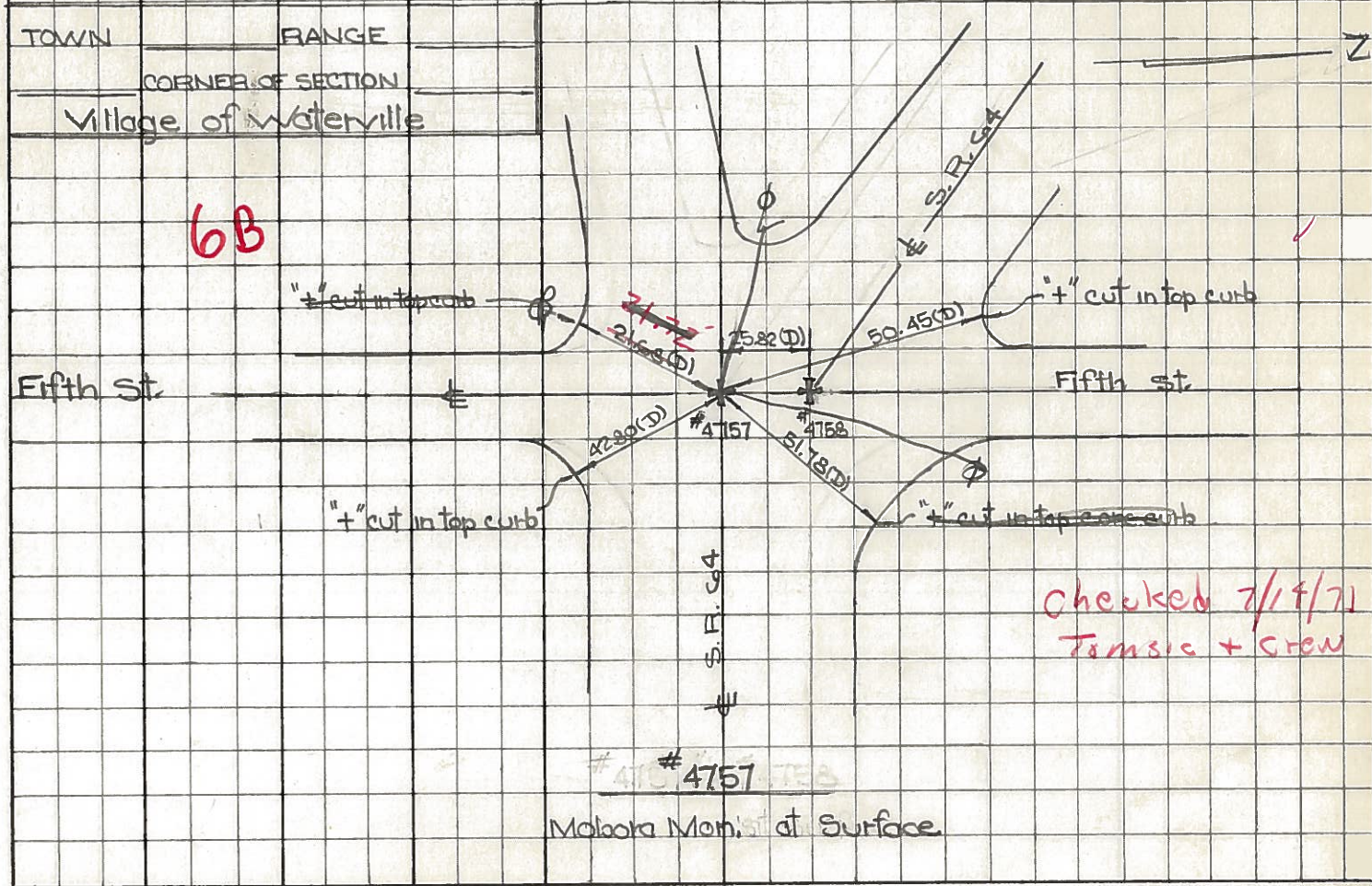
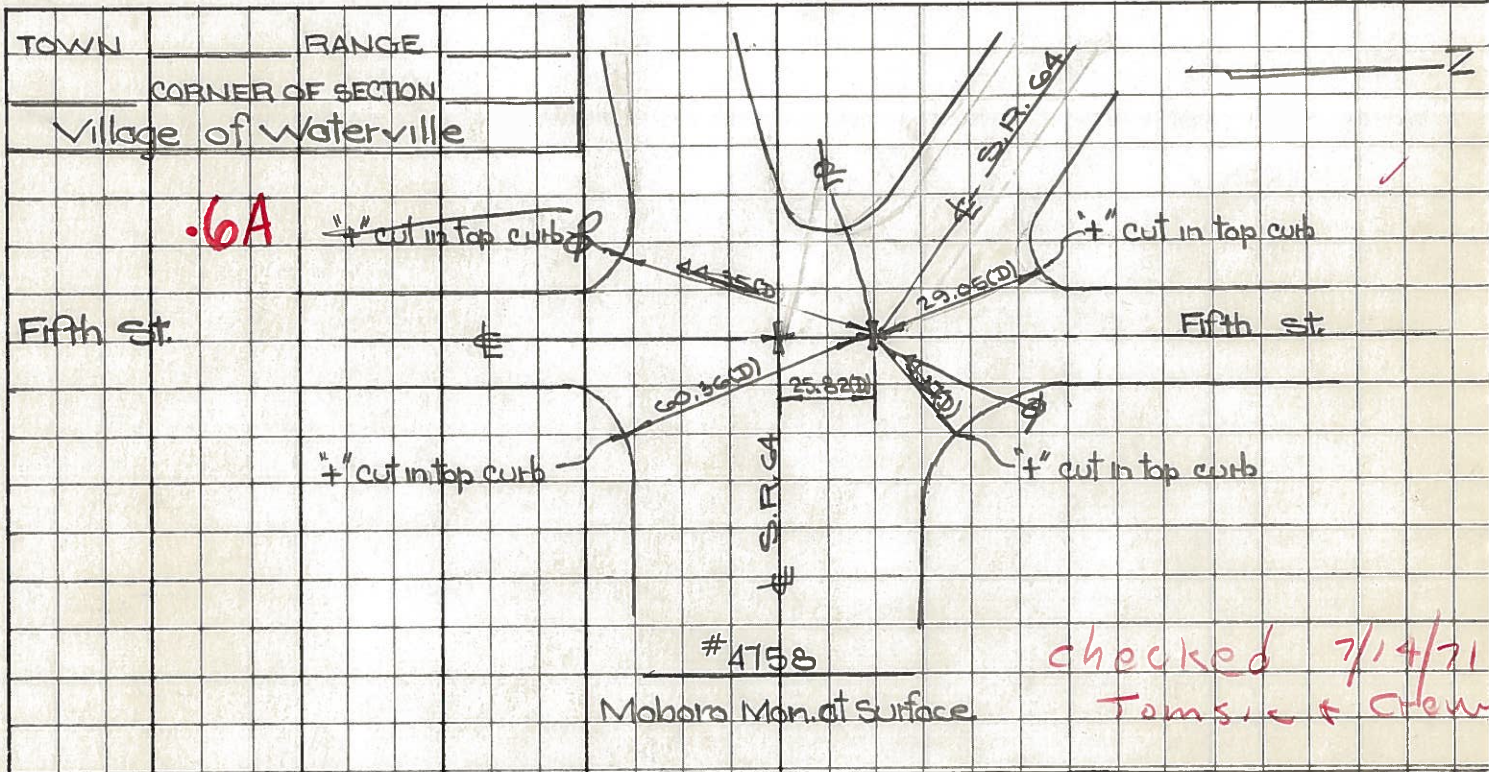
DESCRIPTION References to Control Points JOB NO. \_\_\_\_\_  
 LEFT CENTER LINE RIGHT



6B

6A

PERSONNEL: W. Benno, D. Curtis, J. Teal  
 TITLE: \_\_\_\_\_  
 COUNTY: Lucas  
 DATE: July 30, 1968  
 S. R.: Co 4  
 WEATHER: mild  
 SEC.: \_\_\_\_\_  
 TEMP.: 70°±  
 DESCRIPTION: S.R. Co 4 - Ref. Mon. & Control Points  
 JOB NO.: 02994(0)



PERSONNEL TITLE PERSONNEL TITLE COUNTY Lucas DATE 23 Feb. 66  
 Stone Beck #64 WEATHER Cool  
 Brindley  
 Schroeder SEC. Waterville - W. TEMP. 32°

DESCRIPTION Rets. To Control Pts. JOB NO.  
 LEFT CENTER LINE RIGHT

6B

Int. Fifth St. 42.83' S.E. To "4" on Con. Curb (D)  
 on Beck Tang. (E.) 51.81' N.E. To "4" on Con. Curb (D)  
 Also Int. Farnsworth Rd. 21.67' S.W. To "4" on Con. Curb (D)  
 Fd. Mabara To Surface 50.43' N.W. To "4" on Con. Curb (D)  
 25.82' N. To Mabara Mon. (D)

.6A

Int. Fifth St. 60.39' S.E. To "4" on Con. Curb (D)  
 on Fnd. Tang. (W) 41.41' E.N.E. To "4" on Con. Curb (D)  
 Fd. Mabara To Surface 44.35' S.W. To "4" on Con. Curb (D)  
 29.03' N.W. To "4" on Con. Curb (D)  
 25.82' S. To Mabara Mon (D)

8

P.I.  $\Delta = 0^{\circ}03' \text{ Lt.}$  26.79' N.N.W. To Shiner in T.P. (D)  
 Sta. 48+82.55 56.15' E.N.E. To Shiner in 40" Tice (D)  
 Fd. 1" I. Pin in Con. 51.32' E.S.E. To Shiner in P.P. (D)  
 71.14' W.S.W. To Shiner in P.P. (D)

9

P.I.  $\Delta = 0^{\circ}02' \text{ Rt.}$  22.34' N.W. To "4" on Con. Curb (D)  
 Sta. 59+69.14 12.39' S. To "4" on Con. Curb (D)  
 Fd. 1" I. Pin in Con. 24.98' N.E. To "4" on Con. Curb (D)

# 226

10

Int. Waterville-Monclova Rd. 57.78' ~~N. To Shiner in P.P. (D)~~  
 Waterville Corp. line 40.40' N.N.E. To Con. Ref. Mon. (D)  
 $\Delta = 0^{\circ}15' \text{ Rt.}$  34.54' ~~N.E. To "4" in RR Spk. N. Edge (D)~~  
 Fd. 1" I. Pin in Con. 36.64' S.S.E. to "4" on Lu. Co. B.M. (D)  
 To Surface N.W. cor. Ref. Mon