

O.D.O.T. DISTRICT 2 SURVEY OFFICE

PERSONNEL

REFERENCE NO. 7

SHEET 7 OF 47

NOTES HOMAN

DATE 5-01-02

ROUTE S.R. 64

H.C. ROUSOS

WEATHER CLOUDY

COUNTY LUCAS

R.C. HOMAN

TEMP. 60

TOWNSHIP WATERVILLE

SECTION \_\_\_\_\_

T \_\_\_ R \_\_\_

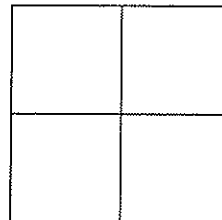
TYPE MONUMENT \_\_\_\_\_ PK NAIL \_\_\_\_\_

ON SURFACE - BELOW \_\_\_\_\_ ON \_\_\_\_\_

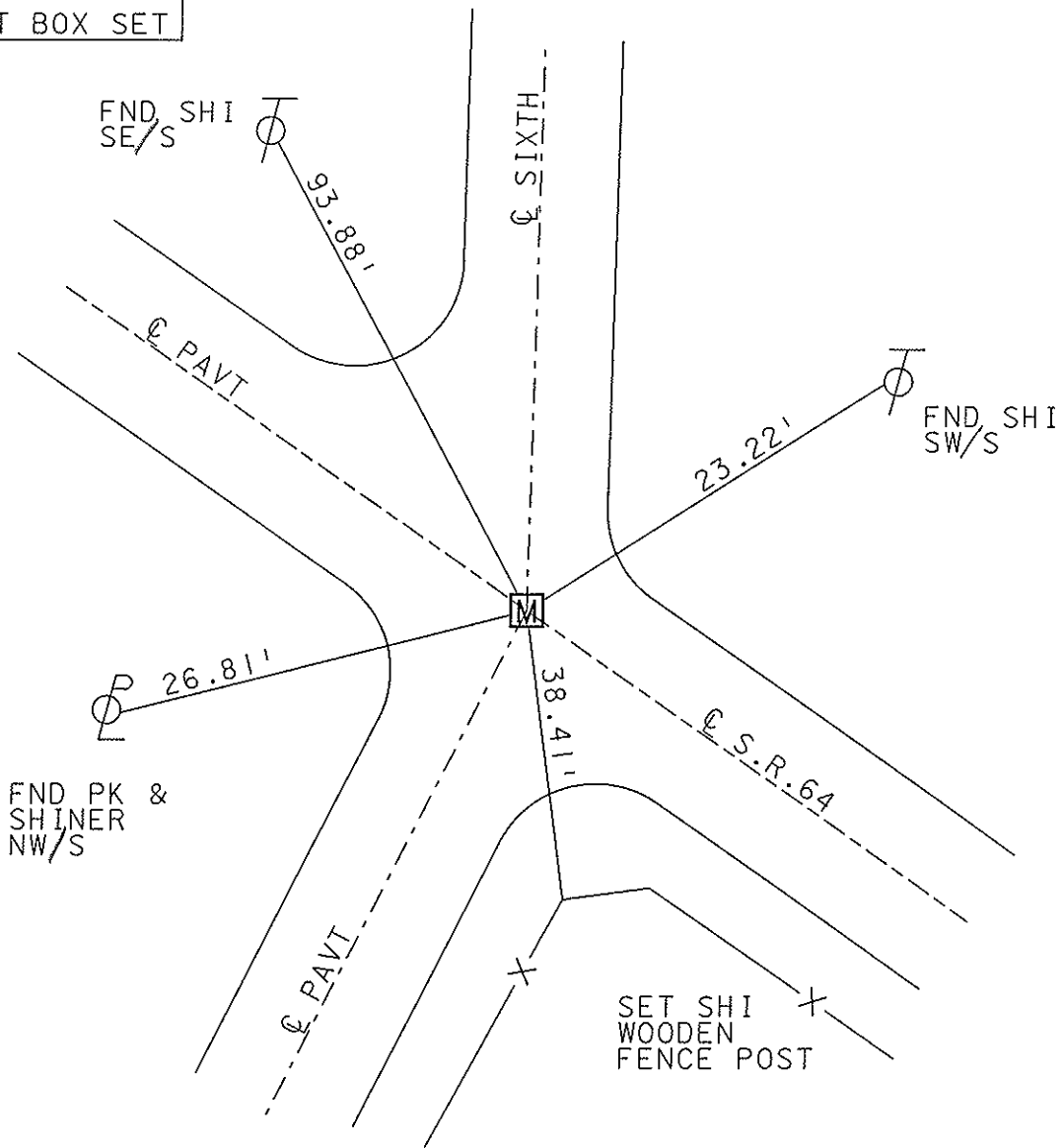
LEFT -  $\phi$  PAV'T - RIGHT \_\_\_\_\_ ON \_\_\_\_\_

\_\_\_\_\_ TO \_\_\_\_\_ EDGE PAVEMENT

S.L.M. \_\_\_\_\_ 31+50 \_\_\_\_\_



MONUMENT BOX SET



O.D.O.T. DISTRICT 2 SURVEY OFFICE

PERSONNEL \_\_\_\_\_

REFERENCE NO. 7

SHEET 7 OF 49

NOTES LOEHRKE

H.C. STONE

R.C. CURTIS

DATE 8-14-91

WEATHER CLEAR

TEMP. +77

ROUTE S.R. 64

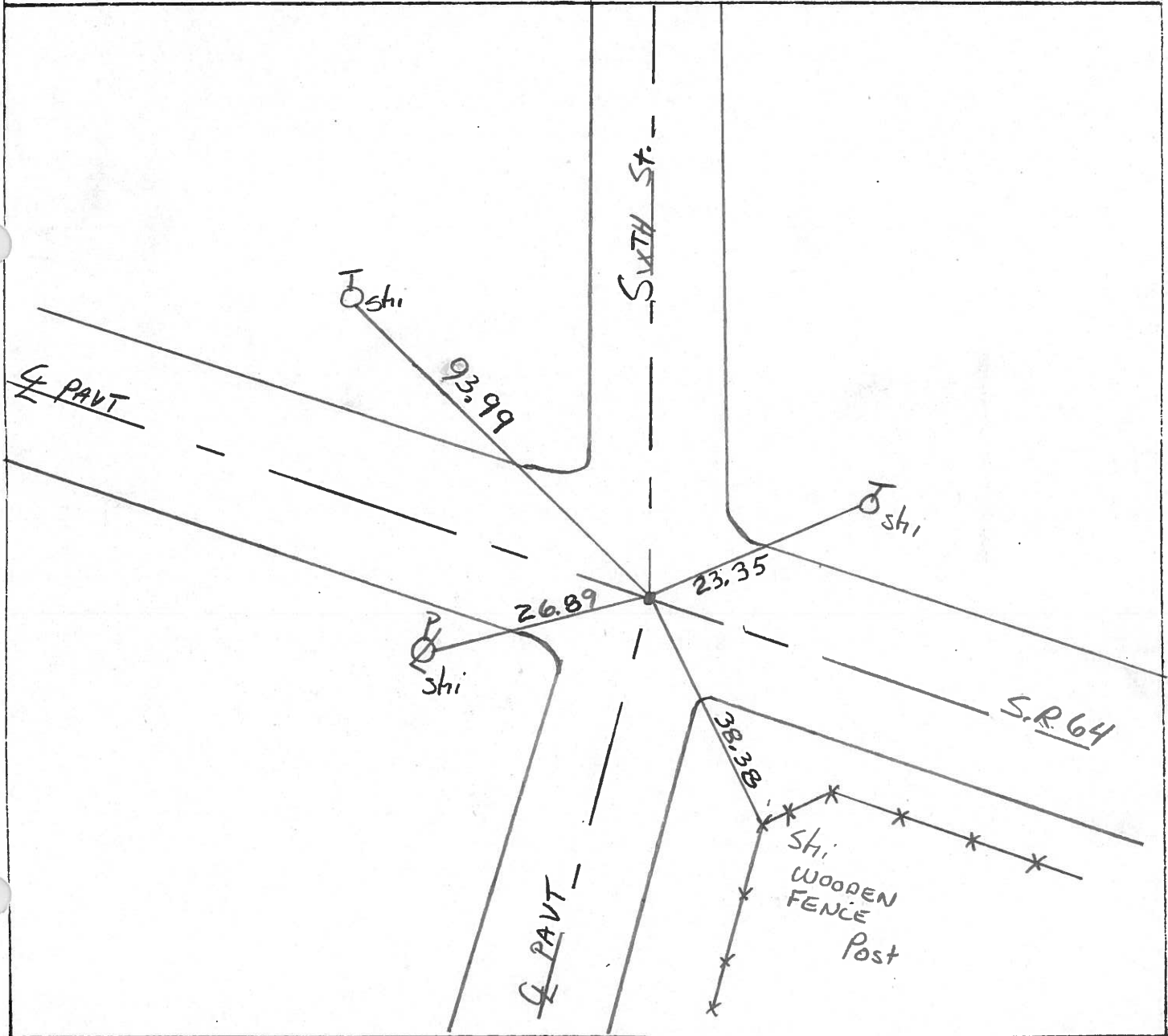
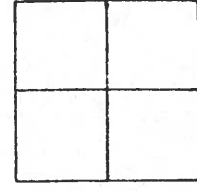
COUNTY LUCAS

TOWNSHIP WATERVILLE

SECTION \_\_\_\_\_

T. \_\_\_\_\_ R. \_\_\_\_\_

TYPE MONUMENT R.R. Spike Set P.K. NAIL  
 ON SURFACE - BELOW YES 3-4-92  
~~LEFT~~ - C. PAV'T. - RIGHT YES  
 TO \_\_\_\_\_ EDGE PAVEMENT  
 S.L.M. 32 + 20



County LUCAS S.R. 64

Township WATERVILLE

Section \_\_\_\_\_

T6N, R6E

Personnel S. Hoffman

C. Koehrke

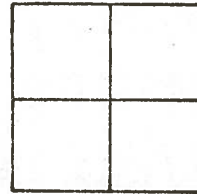
D. Householder

Date 5-21-81

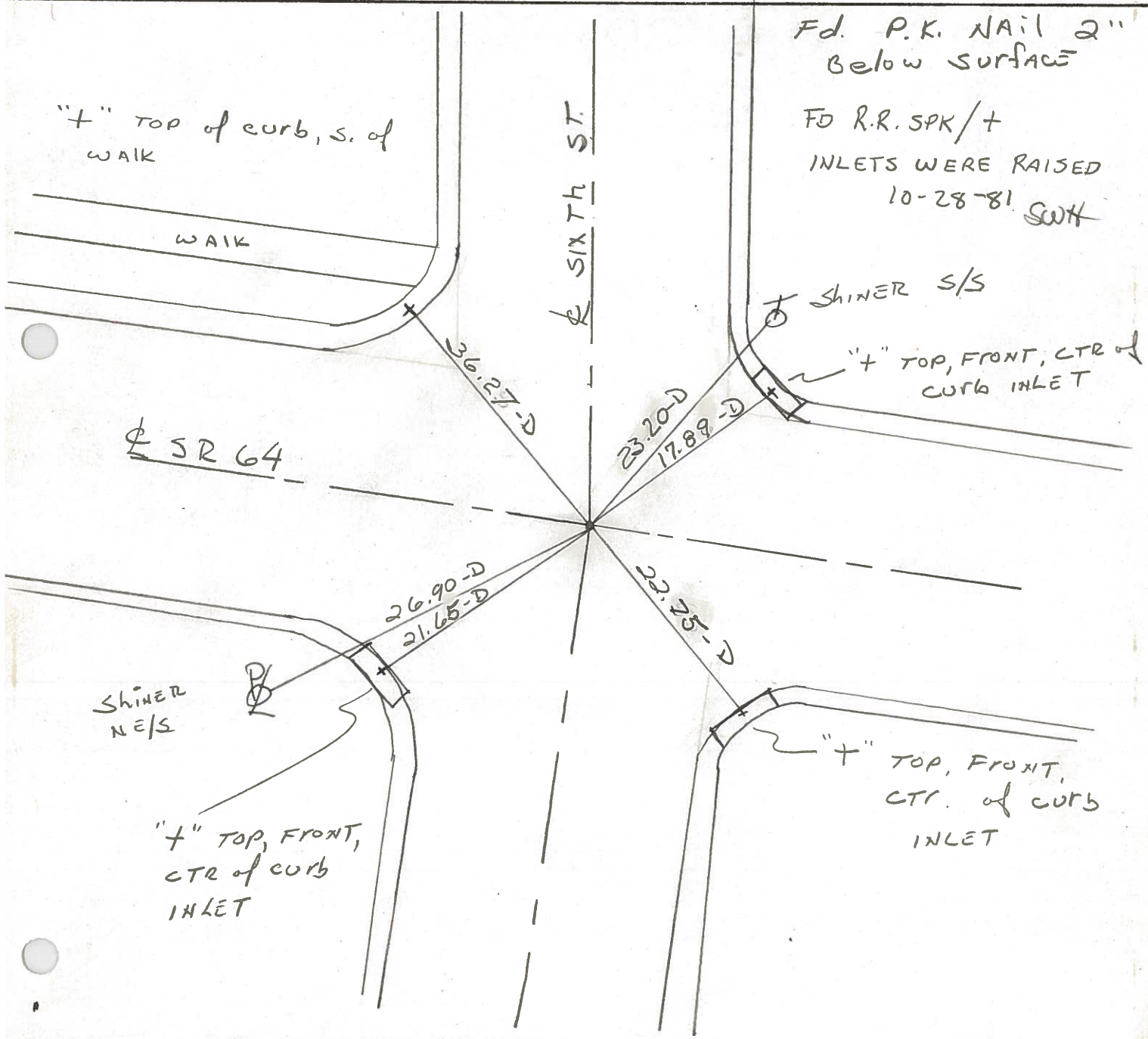
Weather clear

Temp. 65°

IN VILLAGE LIMITS



#7



Fd. P.K. NAIL 2" Below surface

FO R.R. SPK/+  
INLETS WERE RAISED  
10-28-81 SWH

SHINER S/S

"+" TOP, FRONT, CTR of CURB INLET

"+" TOP, FRONT, CTR. of CURB INLET

"+" TOP, FRONT, CTR of CURB INLET

SHINER N/S

"+" TOP of curb, S. of WALK

WALK

SR 64

SIXTH ST.

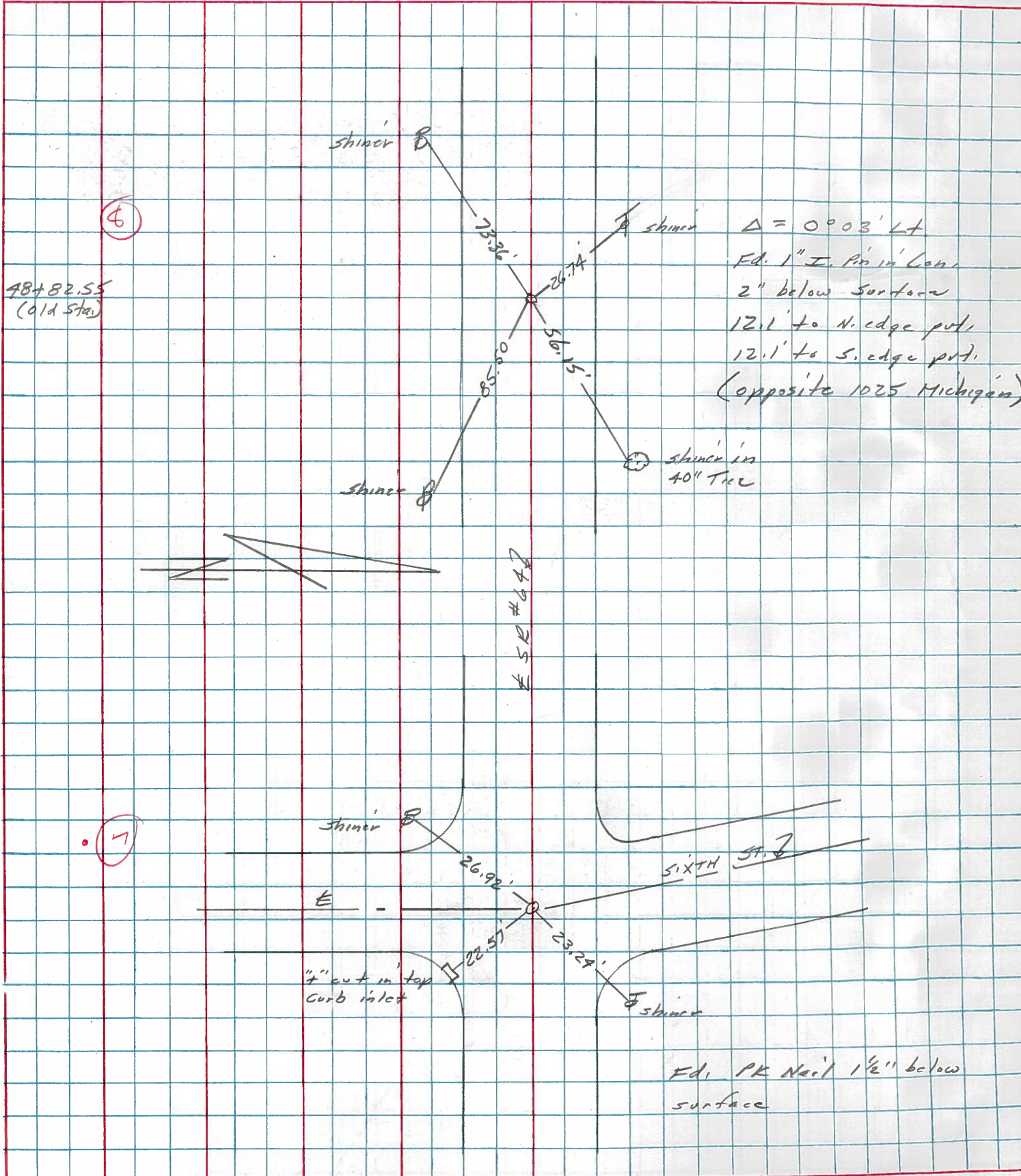
26.90-D  
21.65-D

23.20-D  
17.89-D

22.75-D

36.27-D

PERSONNEL	TITLE	PERSONNEL	TITLE	COUNTY	DATE
Stone				Lucas	23 March 77
				S. R. 64	WEATHER Cool
Crew				SEC. Waterville	TEMP. 36°
DESCRIPTION				References to Control Points	JOB NO.
LEFT		CENTER LINE		RIGHT	



PERSONNEL TITLE PERSONNEL TITLE COUNTY Lucas DATE July 30, 1968  
 W. Denno \_\_\_\_\_  
 D. Curtis \_\_\_\_\_ S. R. Co4 WEATHER mild  
 J. Teal \_\_\_\_\_ SEC. \_\_\_\_\_ TEMP. 70° ±

DESCRIPTION S.R. Co4 - Ref. Mon. & Control Points JOB NO. 02994(0)

