

O.D.O.T. DISTRICT 2 SURVEY OFFICE

PERSONNEL

REFERENCE NO. 8

SHEET 9 OF 47

NOTES HOMAN

DATE 5-01-02

ROUTE S.R. 64

H.C. ROUSOS

WEATHER CLOUDY

COUNTY LUCAS

R.C. HOMAN

TEMP. 60

TOWNSHIP WATERVILLE

SECTION _____

T ___ R ___

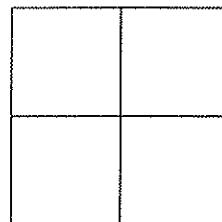
TYPE MONUMENT _____ SEE DRAWING

ON SURFACE - BELOW _____ SEE DRAWING

~~LEFT - C PAVT - RIGHT~~ _____ ON

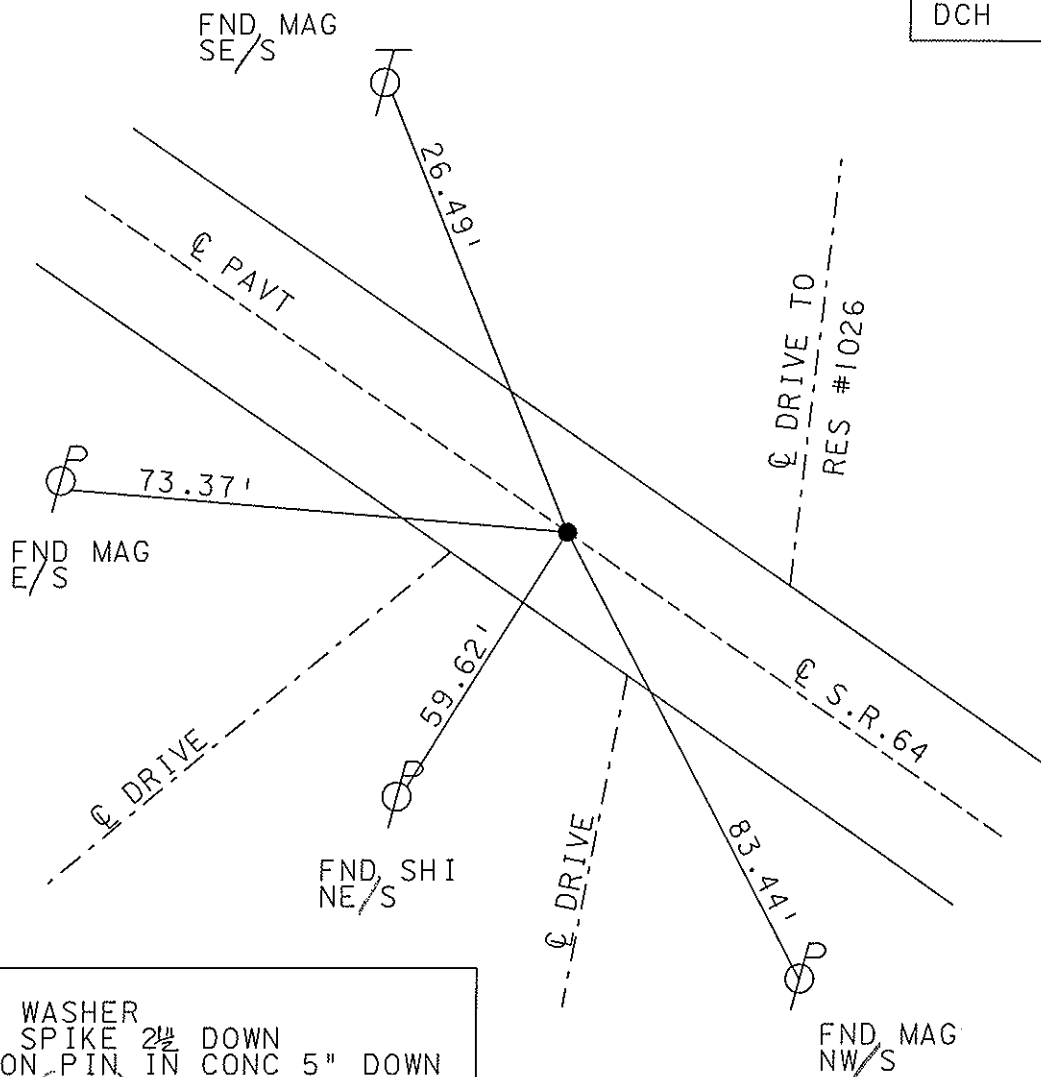
_____ TO _____ EDGE PAVEMENT

S.L.M. _____ 48+11



RECORD P.I.
 $\Delta = 0^\circ 03' \text{ LT}$

SET MAG NAIL
& WASHER
12-13-02
DCH



FD PKY & WASHER
OVER FRR SPIKE 2 1/2" DOWN
OVER IRON PIN IN CONC 5" DOWN
(PIPE)

FND MAG
NW/S

O.D.O.T. DISTRICT 2 SURVEY OFFICE

PERSONNEL _____

REFERENCE NO. 8

SHEET 9 OF 49

NOTES LOGHARKE

H.C. STONE

R.C. CURTIS

DATE 8-14-91

WEATHER CLEAR

TEMP. +78

ROUTE S.R. 64

COUNTY LUCAS

TOWNSHIP WATERVILLE

SECTION _____

T _____ R _____

TYPE MONUMENT sm. P.R. Spike

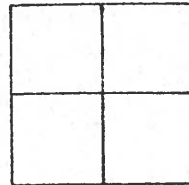
Set P.K. Nail
3-4-92

ON SURFACE - BELOW Yes

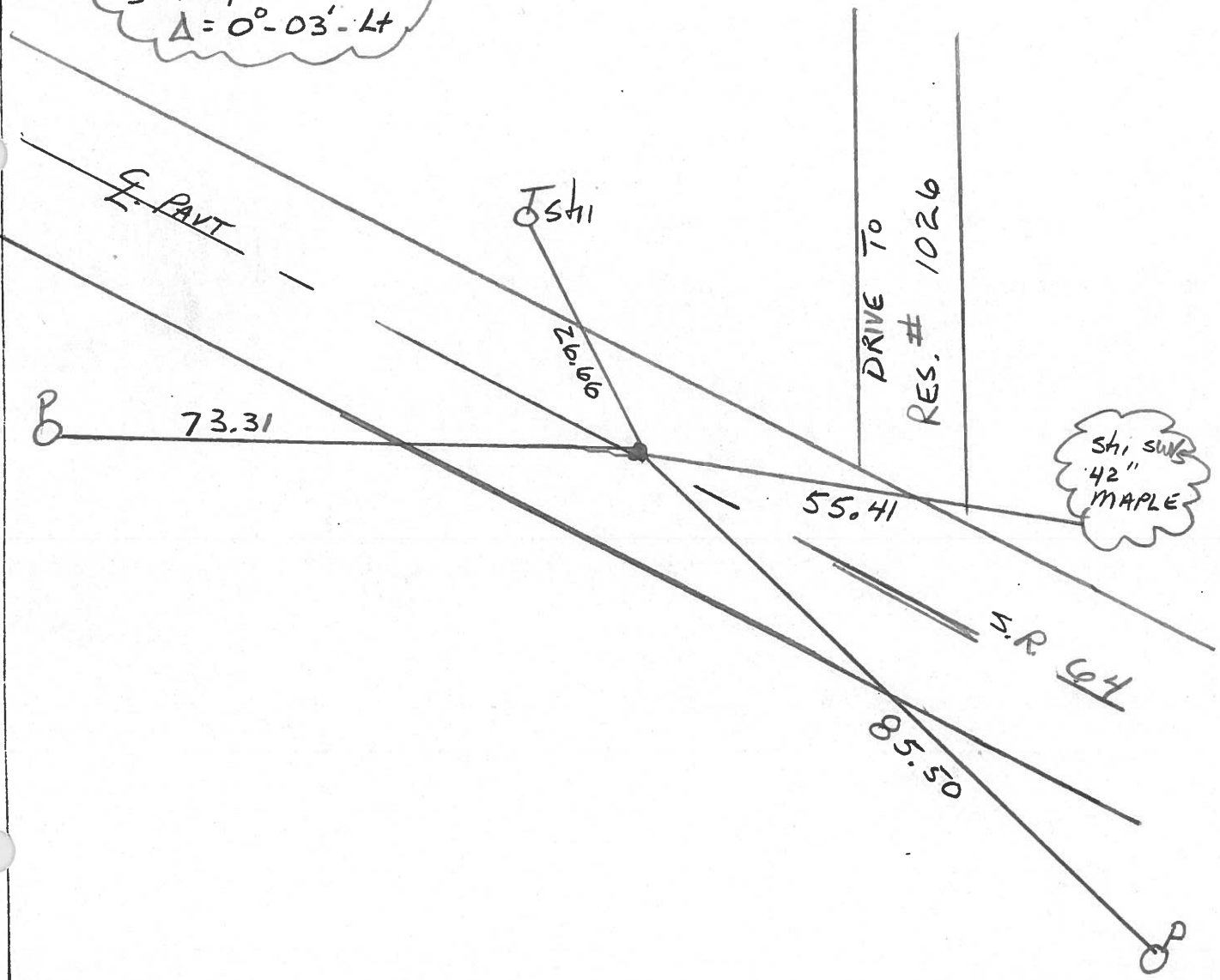
LEFT - Q PAV'T. - RIGHT Yes

12.7 TO Lt EDGE PAVEMENT

S.L.M. 48+81



RECORD P.I.
 1" IRON ROD
 3" Deep
 $\Delta = 0^{\circ} - 03' - Lt$



Sht SW
 42"
 MAPLE

County LUCAS S.R. 64

Date 5-21-80

Township WATERVILLE

Weather Clear

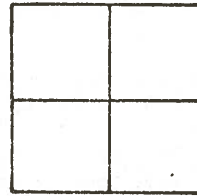
Section _____

Temp. 68°

T N, R E

IN VILLAGE LIMITS

Personnel S. Hoppman



C. Loehrke

L. Householder

8

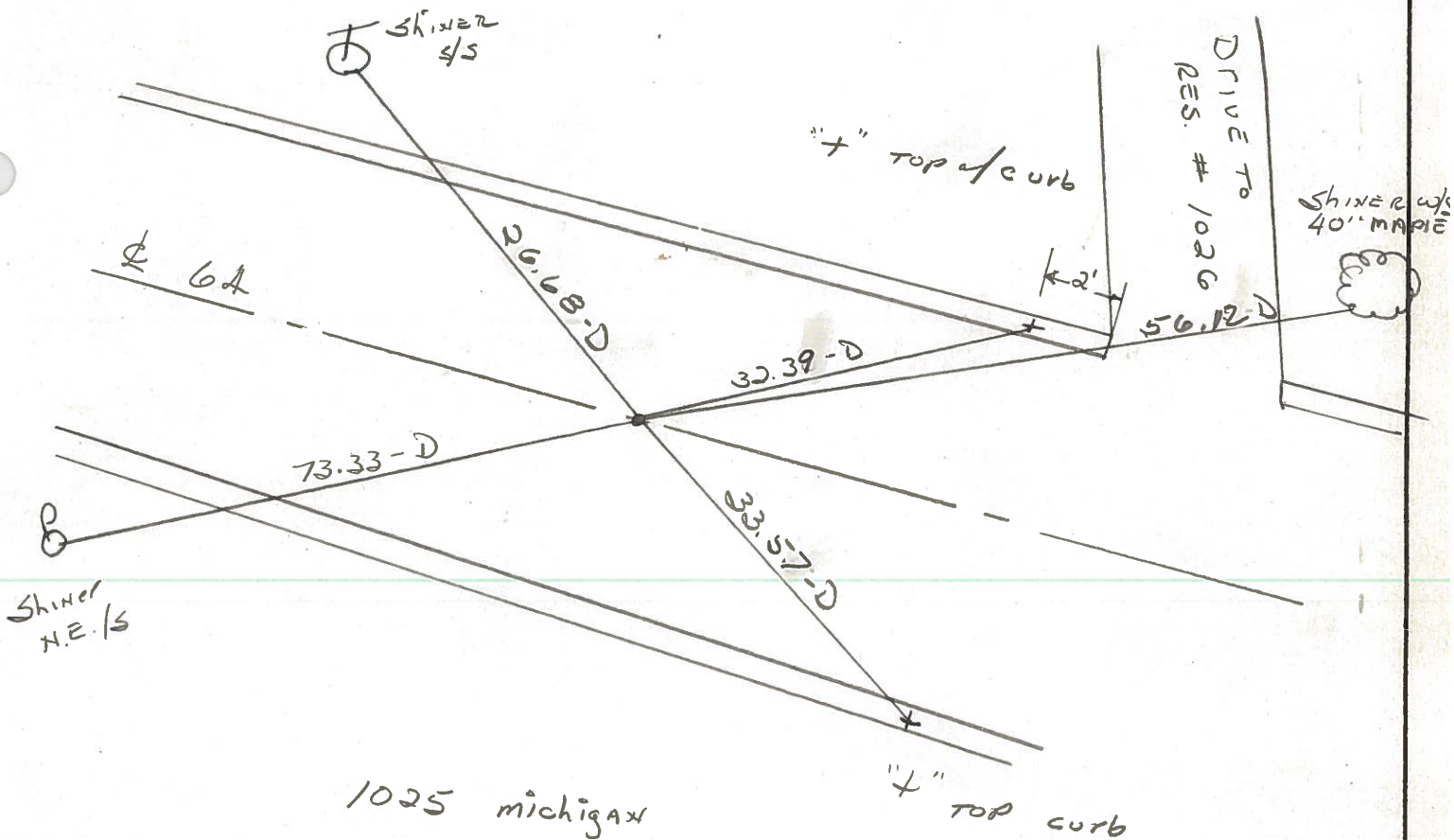
48 + 82.55 = old STA.

FD. 1" I ROD 2" BELOW SURFACE

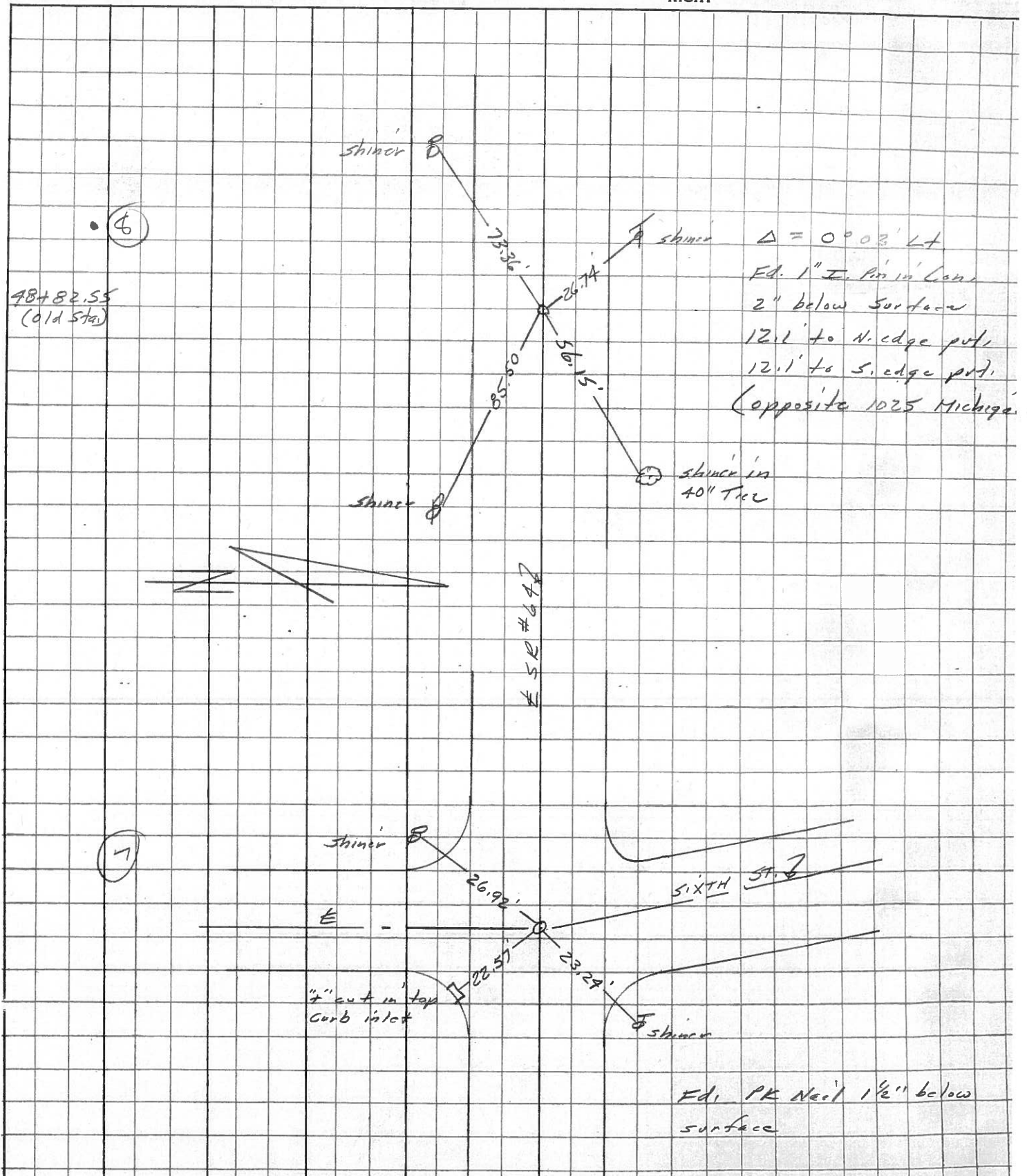
FD. R.R. SPK.

$\Delta = 0^\circ - 03' LT.$

10-28-81 SWH



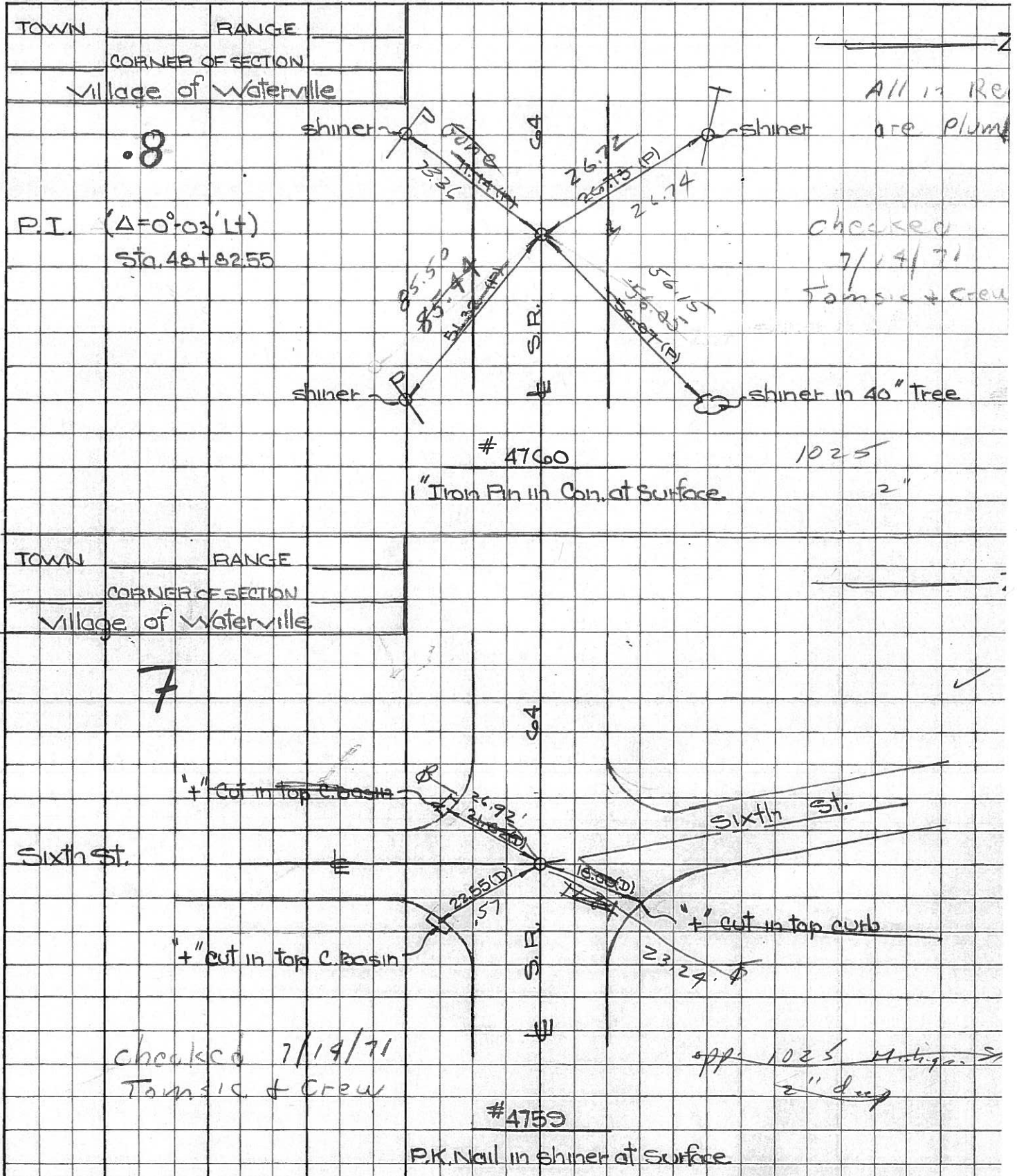
PERSONNEL	TITLE	PERSONNEL	TITLE	COUNTY	Lucas	DATE	23 March 77
Stone				S. R.	64	WEATHER	Cool
Crew				SEC.	Waterville	TEMP.	36°
DESCRIPTION				References to Control Points		JOB NO.	
LEFT		CENTER LINE		RIGHT			



PERSONNEL TITLE PERSONNEL TITLE
 W. Denna _____
 D. Curtis _____
 J. Teal _____

COUNTY Lucas DATE July 30, 1960
 S. R. 64 WEATHER mild
 SEC. _____ TEMP. 70°±

DESCRIPTION S.R. 64 - Ref. Mon. & Control Points JOB NO. 02994(0)



PERSONNEL TITLE PERSONNEL TITLE COUNTY Lucas DATE 23 Feb. 66
 Stone Beck #64 WEATHER Cool
 Brindley Schroeder SEC. Waterville - W. TEMP. 32°

DESCRIPTION Rets. To Control Pts. JOB NO.
 LEFT CENTER LINE RIGHT

6B

Int. Fifth St. 42.83' S.E. To "4" on Con. Curb (D)
 on Beck Tang. (E.) 51.81' N.E. To "4" on Con. Curb (D)
 Also Int. Farnsworth Rd. 21.67' S.W. To "4" on Con. Curb (D)
 Fd. Mabara To Surface 50.43' N.W. To "4" on Con. Curb (D)
 25.82' N. To Mabara Mon. (D)

.6A

Int. Fifth St. 60.39' S.E. To "4" on Con. Curb (D)
 on Fud. Tang. (W) 41.41' E.N.E. To "4" on Con. Curb (D)
 Fd. Mabara To Surface 44.35' S.W. To "4" on Con. Curb (D)
 29.03' N.W. To "4" on Con. Curb (D)
 25.82' S. To Mabara Mon (D)

8

P.I. $\Delta = 0^\circ 03' \text{ Lt.}$ 26.79' N.N.W. To Shiner in T.P. (D)
 Sta. 48+82.55 56.15' E.N.E. To Shiner in 40" Tice (D)
 Fd. 1" I. Pin in Con. 51.32' E.S.E. To Shiner in P.P. (D)
 71.14' W.S.W. To Shiner in P.P. (D)

9

P.I. $\Delta = 0^\circ 02' \text{ Rt.}$ 22.34' N.W. To "4" on Con. Curb (D)
 Sta. 59+69.14 12.39' S. To "4" on Con. Curb (D)
 Fd. 1" I. Pin in Con. 24.98' N.E. To "4" on Con. Curb (D)

226

10

Int. Waterville-Monclova Rd. 57.78' ~~N. To Shiner in P.P. (D)~~
 Waterville Corp. line 40.40' N.N.E. To Con. Ref. Mon. (D)
 $\Delta = 0^\circ 15' \text{ Rt.}$ 34.54' ~~N.E. To "4" in RR Spk. N. Edge (D)~~
 Fd. 1" I. Pin in Con. 36.64' S.S.E. to "4" on Lu. Co. B.M. (D)
 To Surface N.W. cor. Ref. Mon