

O.D.O.T. DISTRICT 2 SURVEY OFFICE

PERSONNEL

REFERENCE NO. 9

SHEET 10 OF 47

NOTES HOMAN

DATE 5-01-02

ROUTE S.R. 64

H.C. ROUSOS

WEATHER CLOUDY

COUNTY LUCAS

R.C. HOMAN

TEMP. 65

TOWNSHIP WATERVILLE

SECTION _____

T ___ R ___

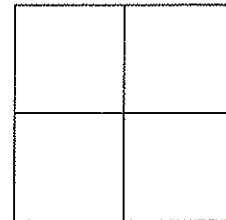
TYPE MONUMENT _____ SEE DRAWING _____

ON SURFACE - BELOW _____ SEE DRAWING _____

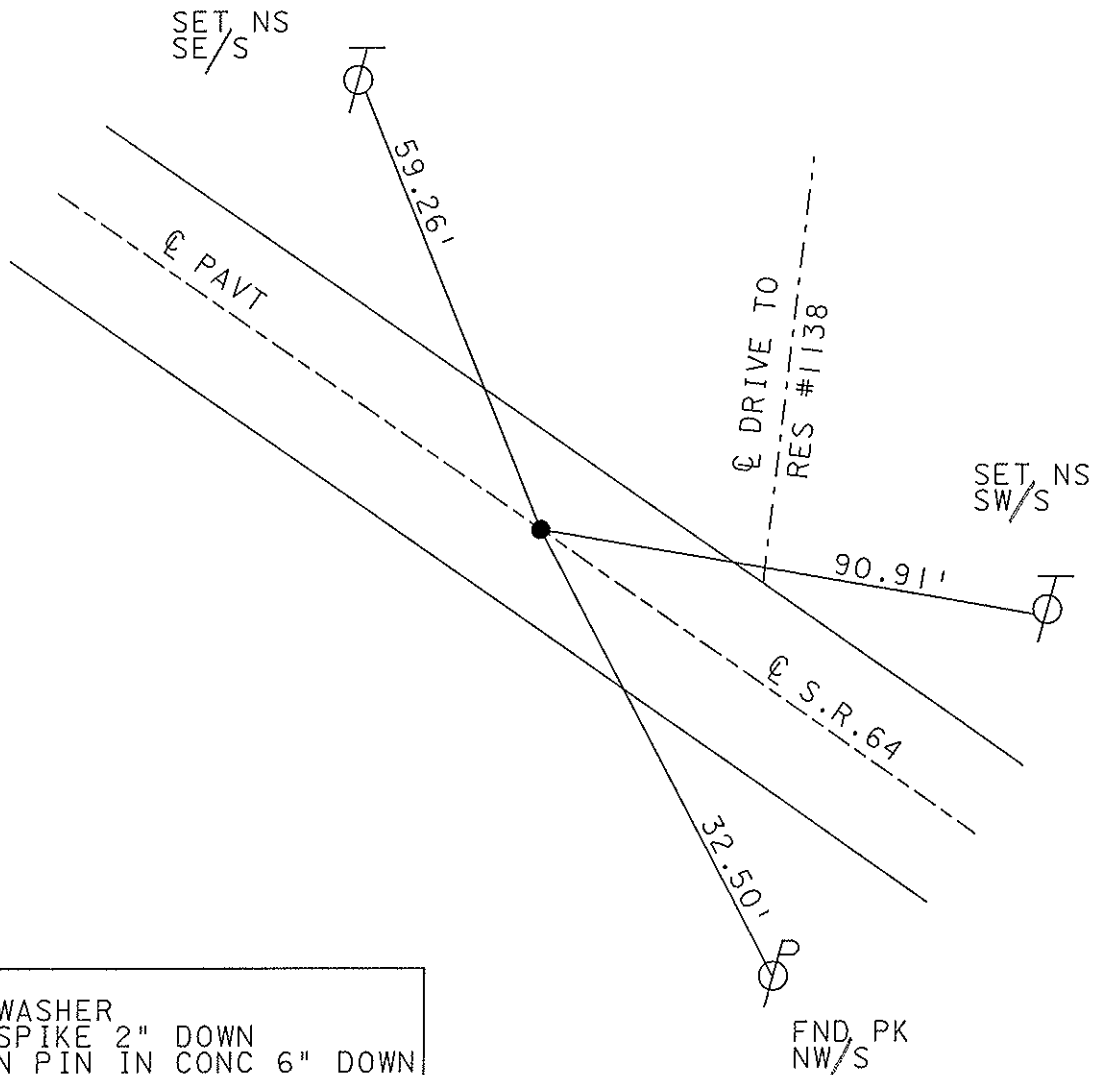
~~LEFT - C PAV'T - RIGHT~~ _____ ON _____

_____ TO _____ EDGE PAVEMENT

S.L.M. _____ 58+98 _____



RECORD P.I.
Δ = 0° 02' RT



FD PK & WASHER
OVER RR SPIKE 2" DOWN
OVER IRON PIN IN CONC 6" DOWN

FND. PK
NW/S

O.D.O.T. DISTRICT 2 SURVEY OFFICE

PERSONNEL

REFERENCE NO. _____

SHEET _____ OF _____

NOTES

H.C. TM Rousoos

DATE 5-01-02

ROUTE 64

R.C. DC Homan

WEATHER Cloudy

COUNTY Lucas

TEMP. 65°

TOWNSHIP _____

SECTION _____

T. _____ R. _____

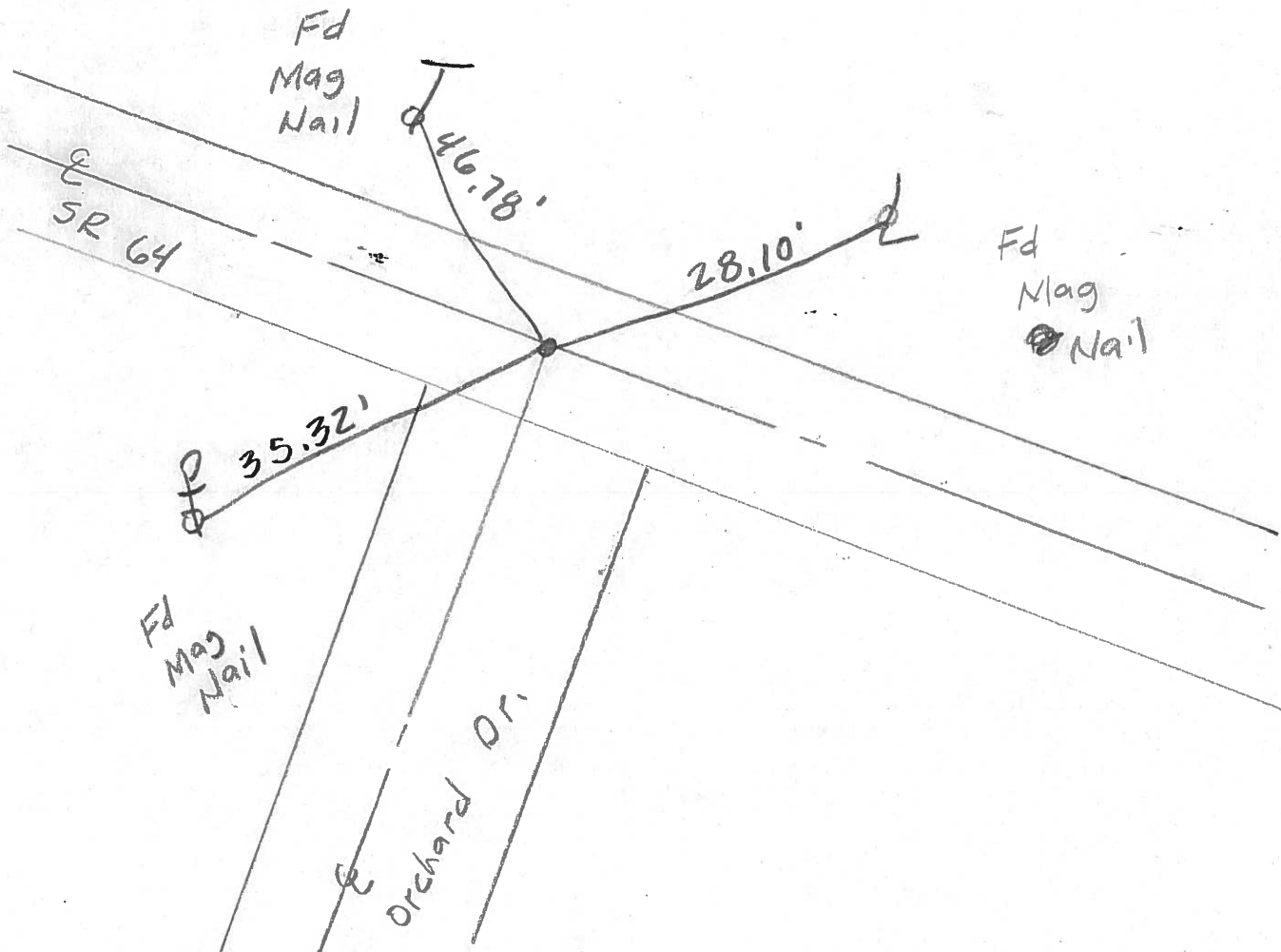
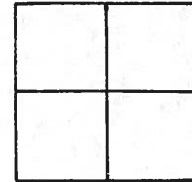
TYPE MONUMENT Nail & Shiner

ON SURFACE - BELOW _____

LEFT- & PAV'T. - RIGHT _____

_____ TO _____ EDGE PAVEMENT

S.L.M. 55+80



O.D.O.T. DISTRICT 2 SURVEY OFFICE

PERSONNEL _____

REFERENCE NO. 9

SHEET 10 OF 49

NOTES LOHRKE

H.C. STONE

R.C. CURTIS

DATE 8-14 91

WEATHER CLEAR

TEMP. +77

ROUTE S.R. 64

COUNTY LUCAS

TOWNSHIP WATERVILLE

SECTION _____

T _____ R _____

TYPE MONUMENT P.K. NAIL

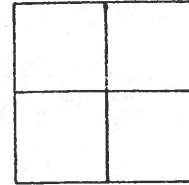
Set P.K. NAIL
3-4-92

ON SURFACE - ~~BELOW~~ Yes

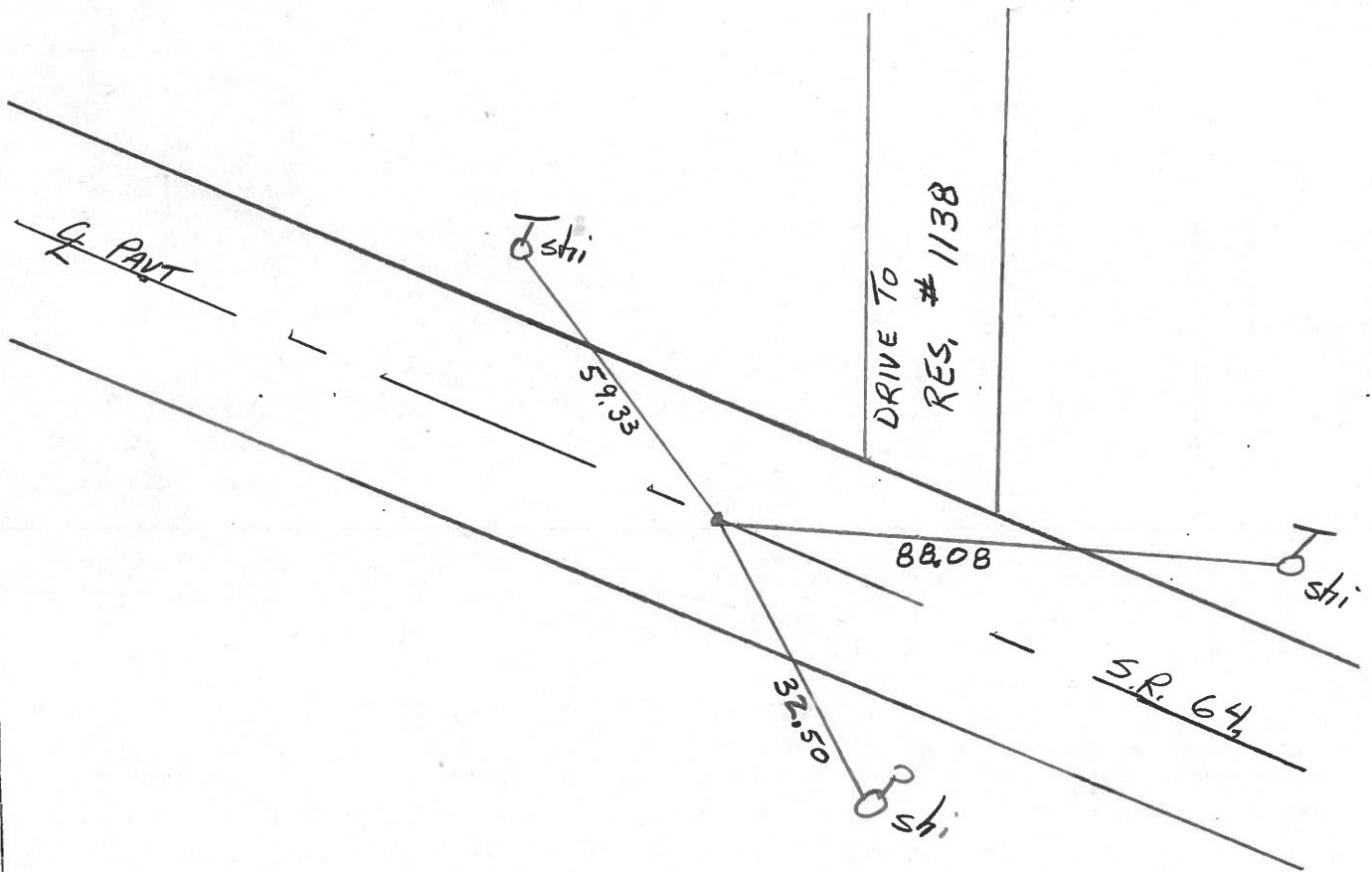
LEFT - & PAV'T. - RIGHT Yes

12.8 TO 4 EDGE PAVEMENT

S.L.M. 59+68



RECORD
Sta 59+69.14
P.I. Δ = 0°-02 RT
1" IRON ROD
IN CONC
3 1/2" BELOW
SURFACE



County LUCAS S.R. 64

Township WATERVILLE

Section _____

T N, R E

Personnel S. Hoffman

C. Luehrke

L. Householder

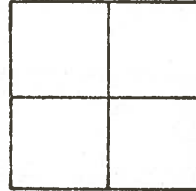
9

Date 5-21-81

Weather Clear

Temp. 70°

IN VILLAGE LIMITS



59+69.14 old STA.

$\Delta = 0^{\circ}.02'$ RT.

Fd. RR. SPK. / H

10-28-81

SWH

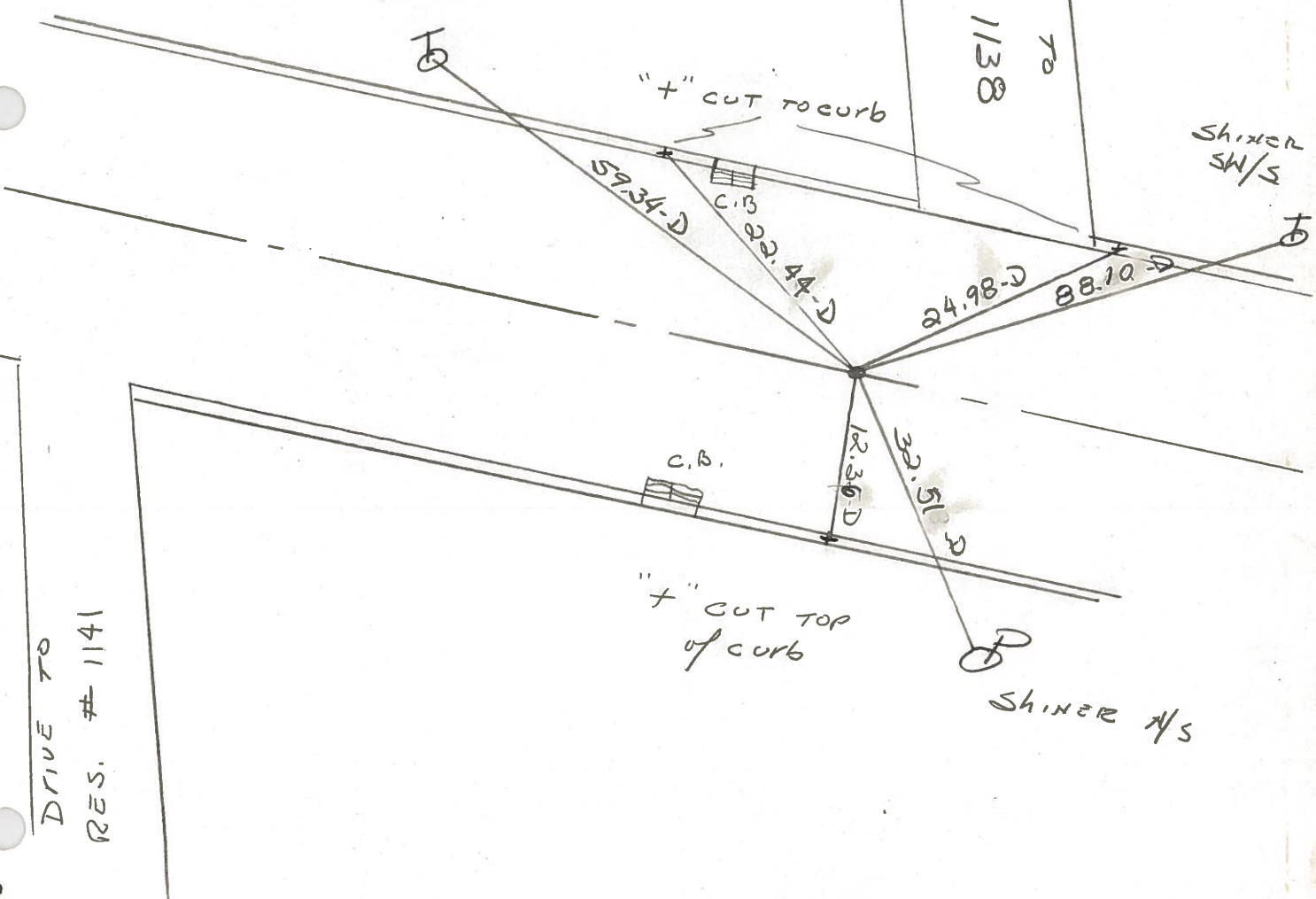
Fd. 1" I Rod in CONC.

2" Below Surface

SHINER S/S

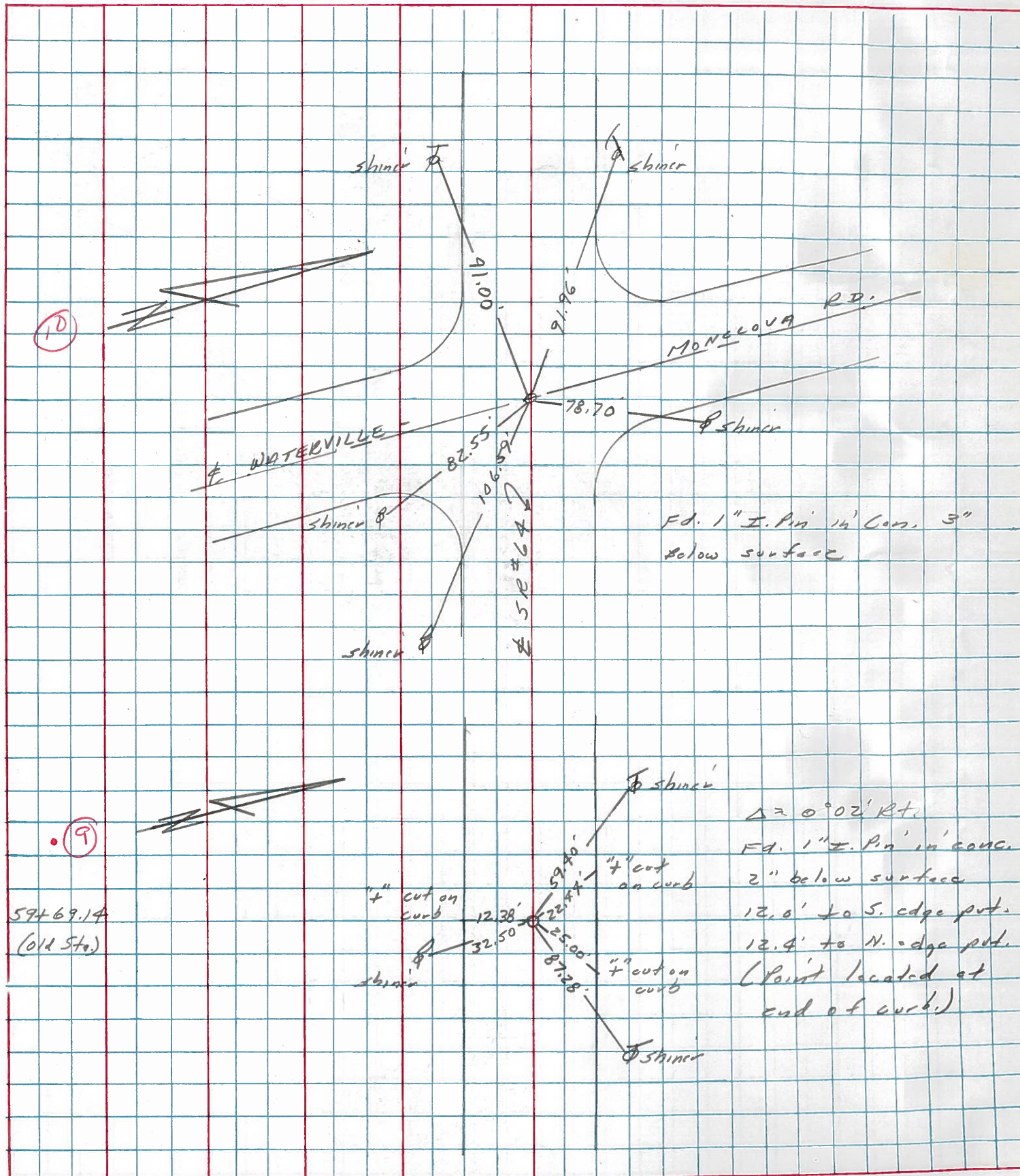
DRIVE TO
RES. # 1138

SHINER
SW/S

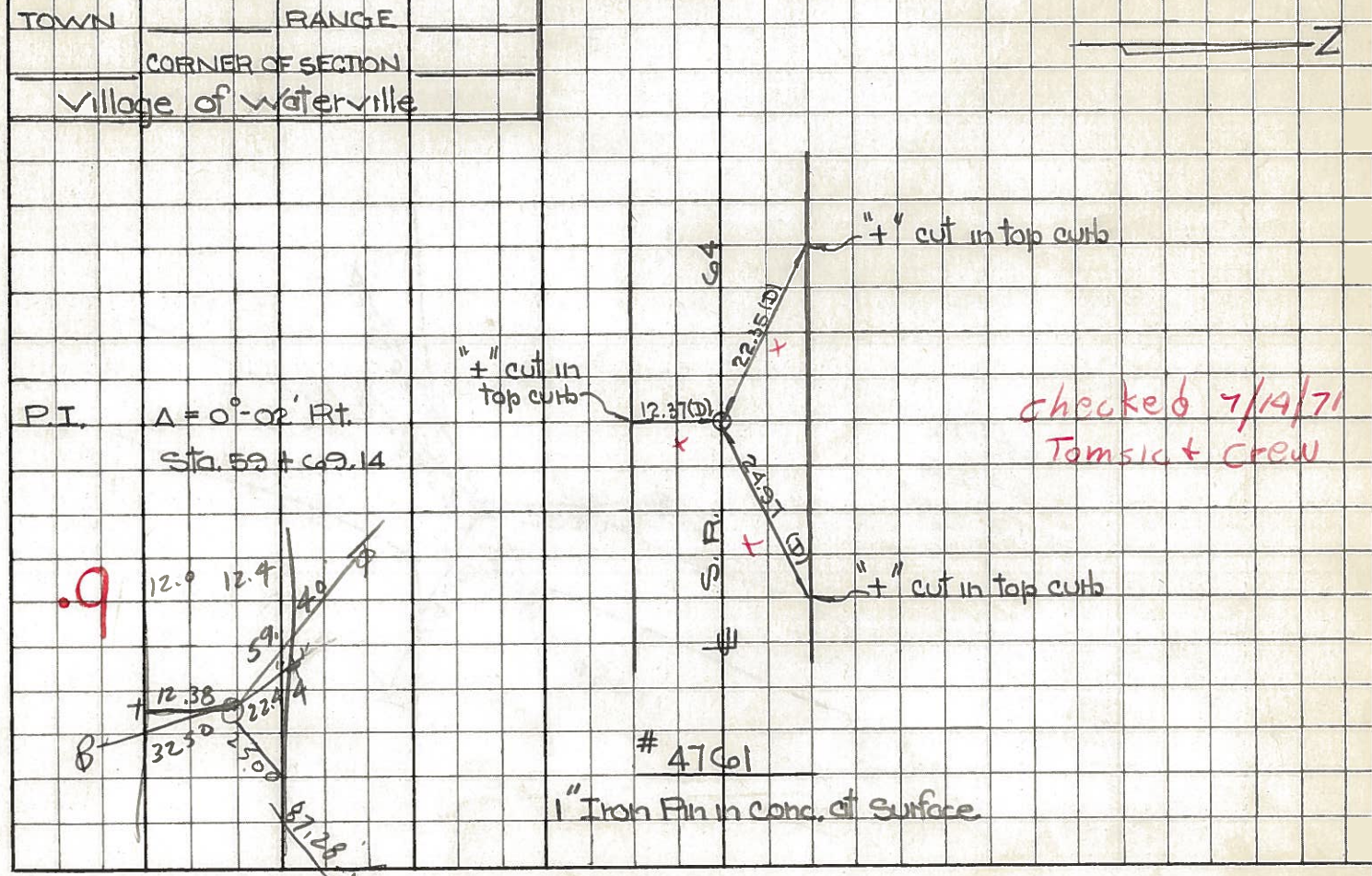
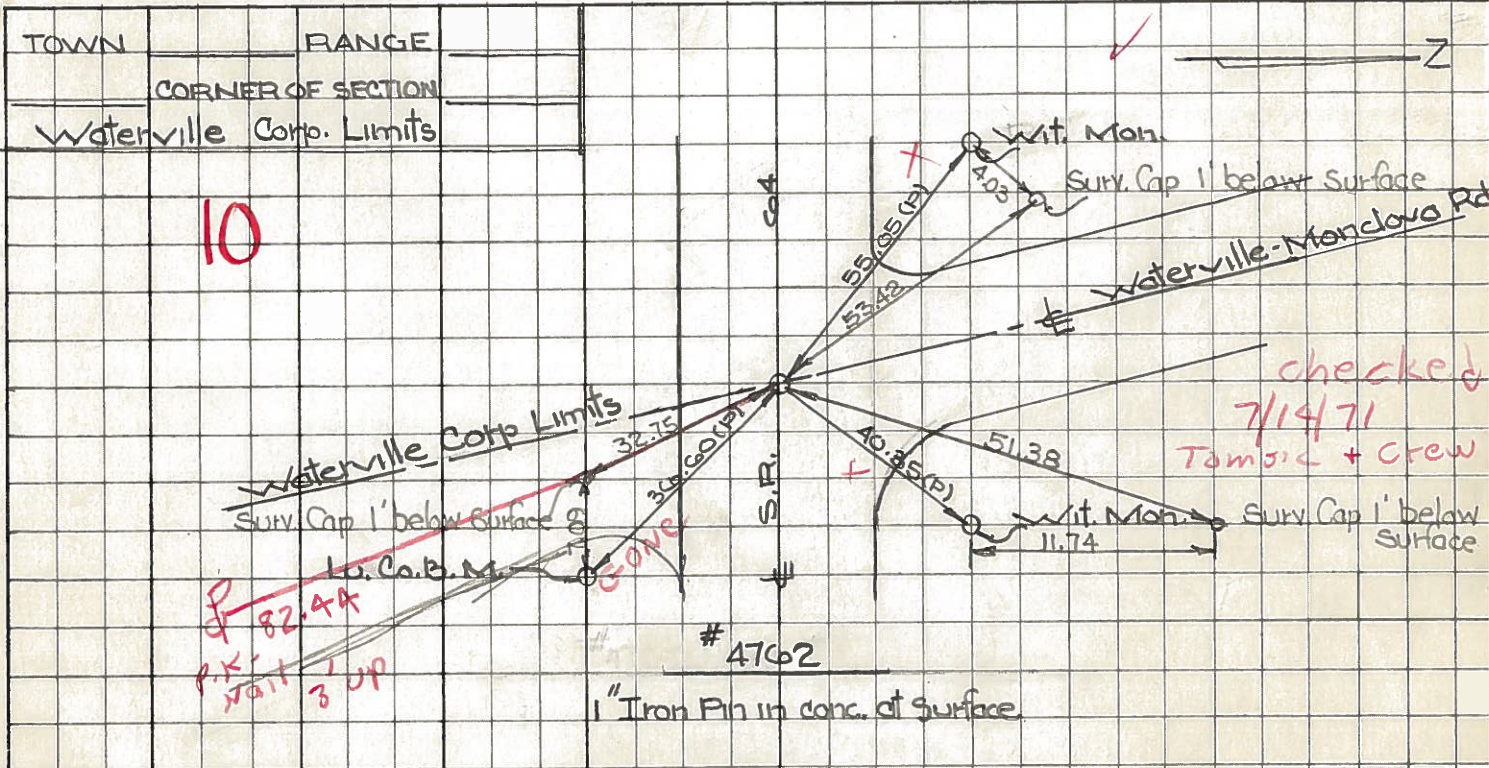


PERSONNEL	TITLE	PERSONNEL	TITLE	COUNTY	DATE
Stone				Lucas	23 March 77
Grew				S. R. 64	WEATHER Fair
				SEC. Waterville	TEMP. 38°

DESCRIPTION References to Control Points JOB NO. _____



PERSONNEL TITLE PERSONNEL TITLE COUNTY Lucas DATE July 30, 1968
 W. Denno _____
 D. Curtis _____ S. R. Co4 WEATHER mild
 J. Teal _____ SEC. _____ TEMP. 70°±
 DESCRIPTION S.R. Co4- Ref. Mon. & Control Points JOB NO. 02994(0)



PERSONNEL	TITLE	PERSONNEL	TITLE	COUNTY	DATE
Stone				Lucas	23 Feb. 66
Beck				S. R. #64	WEATHER Cool
Bridley				SEC. Waterville - W.	TEMP. 32°
Schroder					

DESCRIPTION Refs. To Control Pts. JOB NO.

	LEFT	CENTER LINE	RIGHT	
6B	Int. Fifth St.	42.83'	S.E. To " on Con. Curb	(D)
	on Back Tang. (E.)	51.81'	N.E. To " on Con. Curb	(D)
	Also Int. Farms west of R.R.	21.67'	S.W. To " on Con. Curb	(D)
	Ed. Moberg To Surface	50.43'	N.W. To " on Con. Curb	(D)
		25.82'	N. To Moberg Men.	(D)
6A	Int. Fifth St.	60.39'	S.E. To " on Con. Curb	(D)
	on Front Tang. (W)	41.41'	E.N.E. To " on Con. Curb	(D)
	Ed. Moberg To Surface	44.35' OK	S.W. To " on Con. Curb	(D)
		29.03'	N.W. To " on Con. Curb	(D)
		25.82' OK	S. To Moberg Men.	(D)
8	P.I. $\Delta = 0^{\circ}03' \text{ Lt.}$	26.79'	N.N.W. To Shiner in T.P.	(D)
	Sta. 48+82.55	56.15'	E.N.E. To Shiner in 40" Tree	(D)
	Ed. 1" I. Pin in Comp.	51.32'	E.S.E. To Shiner in P.P.	(D)
		21.14'	W.S.W. To Shiner in P.P.	(D)
.9	P.I. $\Delta = 0^{\circ}02' \text{ Rt.}$	22.34'	N.W. To " on Con. Curb	(D)
	Sta. 59+69.14	12.39'	S. To " on Con. Curb	(D)
	Ed. 1" I. Pin in Comp.	27.98'	N.E. To " on Con. Curb	(D)
# 226 10	Int. Waterville - Monclova Rd.	57.18'	N. To Shiner in P.P.	(D)
	Waterville Corp. Line	40.40'	N.N.E. To Con. Ref. Man.	(D)
	$\Delta = 0^{\circ}15' \text{ Rt.}$	34.54'	N.E. To " in R.R. Spk. N. Edge #64	(D)
	Ed. 1" I. Pin in Comp. To Surface	32.64'	S.S.E. to " on Lu. Co. B.M. N.W. COR. Ref. Man.	(D)