

O.D.O.T. DISTRICT 2 SURVEY OFFICE

PERSONNEL

NOTES _____
 H.C. _____
 R.C. _____

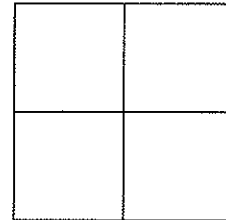
REFERENCE NO. 10

DATE 5-07-02
 WEATHER CLOUDY
 TEMP. 65

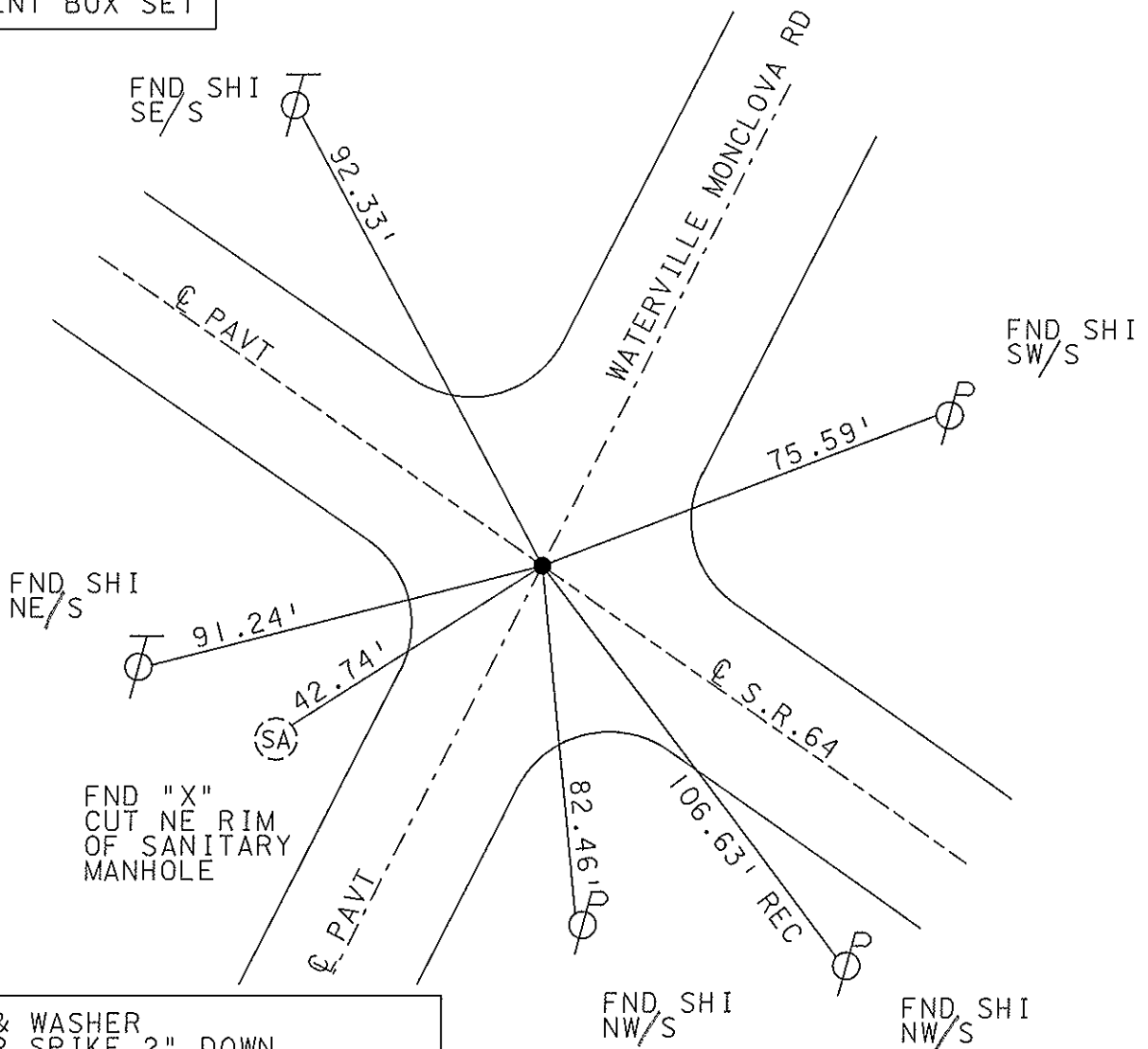
SHEET 12 OF 47

ROUTE S.R. 64
 COUNTY LUCAS
 TOWNSHIP WATERVILLE
 SECTION _____
 T ___ R ___

TYPE MONUMENT _____ SEE DRAWING
~~ON SURFACE~~ - BELOW _____ SEE DRAWING
~~LEFT~~ - Q PAVT - ~~RIGHT~~ _____ ON _____
 _____ TO _____ EDGE PAVEMENT
 S.L.M. _____ 73+06



MONUMENT BOX SET



FD PK & WASHER
 OVER RR SPIKE 2" DOWN
 OVER IRON PIN IN CONC 5" DOWN

O.D.O.T. DISTRICT 2 SURVEY OFFICE

PERSONNEL _____

REFERENCE NO. 10

SHEET 12 OF 49

NOTES LOHRKE

H.C. STONE

R.C. CURTIS

DATE 8-14-91

WEATHER CLEAR

TEMP. +72

ROUTE S.R. 64

COUNTY LUCAS

TOWNSHIP WATERVILLE

SECTION _____

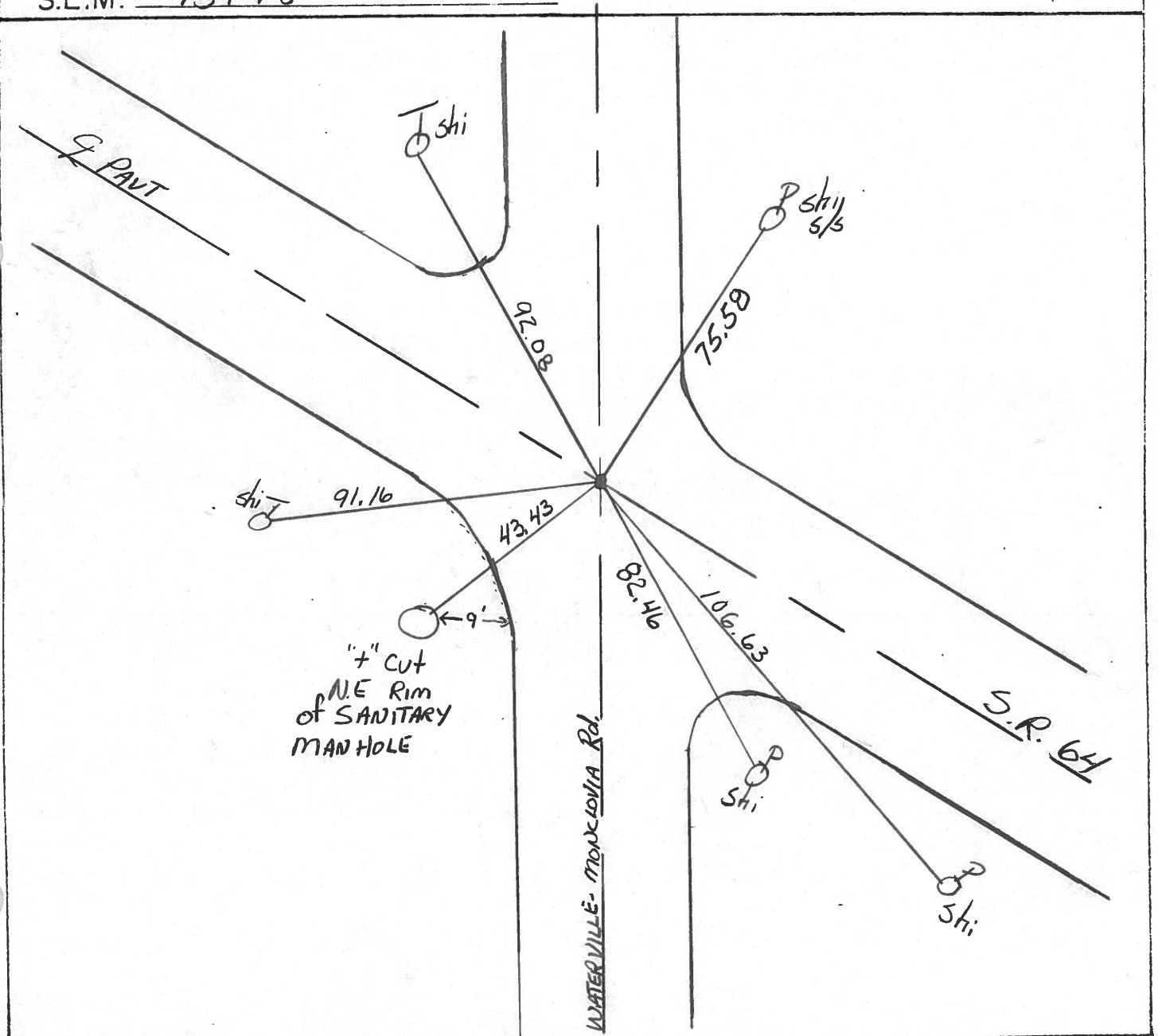
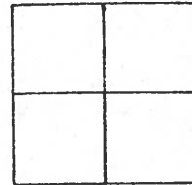
T _____ R _____

TYPE MONUMENT Sm. R.R. Spike Set P.K. Nail 3-4-92
 ON SURFACE - BELOW Yes

LEFT- & PAV'T. - RIGHT Both ROADS

TO EDGE PAVEMENT

S.L.M. 73+78



County LUCAS S.R. 64

Township WATERVILLE

Section _____

T N, R E

Personnel S. Hoffman

C. Doehrke

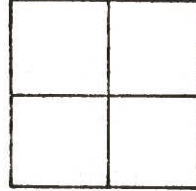
J. Household er

Date 5-21-81

Weather clear

Temp. 73°

IN VILLAGE LIMITS



#10

Fd. SMALL R.R. SPK./+
10-28-81
SWH

Fd. 1" I. PIN IN CONC.
3" below surface

SHINER S/S

SHINER S/S

38.65-D

CON. MON.

64

91.93-D

78.67-D
9-2704

64

90.95-D

42.87-D

82.43-D

106.58-D

SHINER S/S

30'
9'
"+" CUT
NE RIM
of SANITARY
M.H.

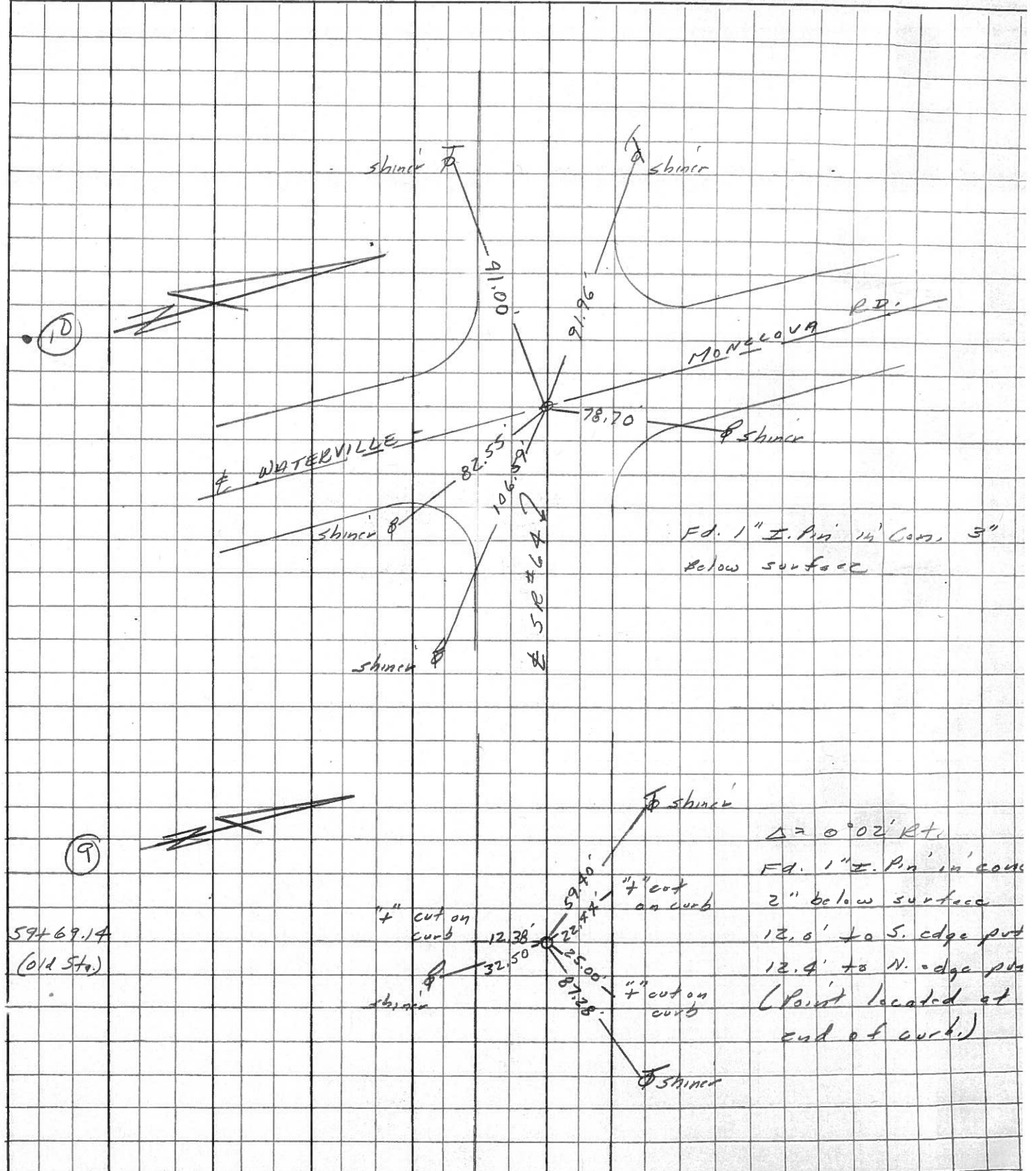
SHINER
w/s

SHINER
w/s

WATERVILLE - MONCLOVA Rd.

PERSONNEL	TITLE	PERSONNEL	TITLE	COUNTY	DATE	WEATHER	TEMP.
Stone				Lucas	23 March 7	Fair	38°
§				S. R. 64			
Crew				SEC. Waterville			

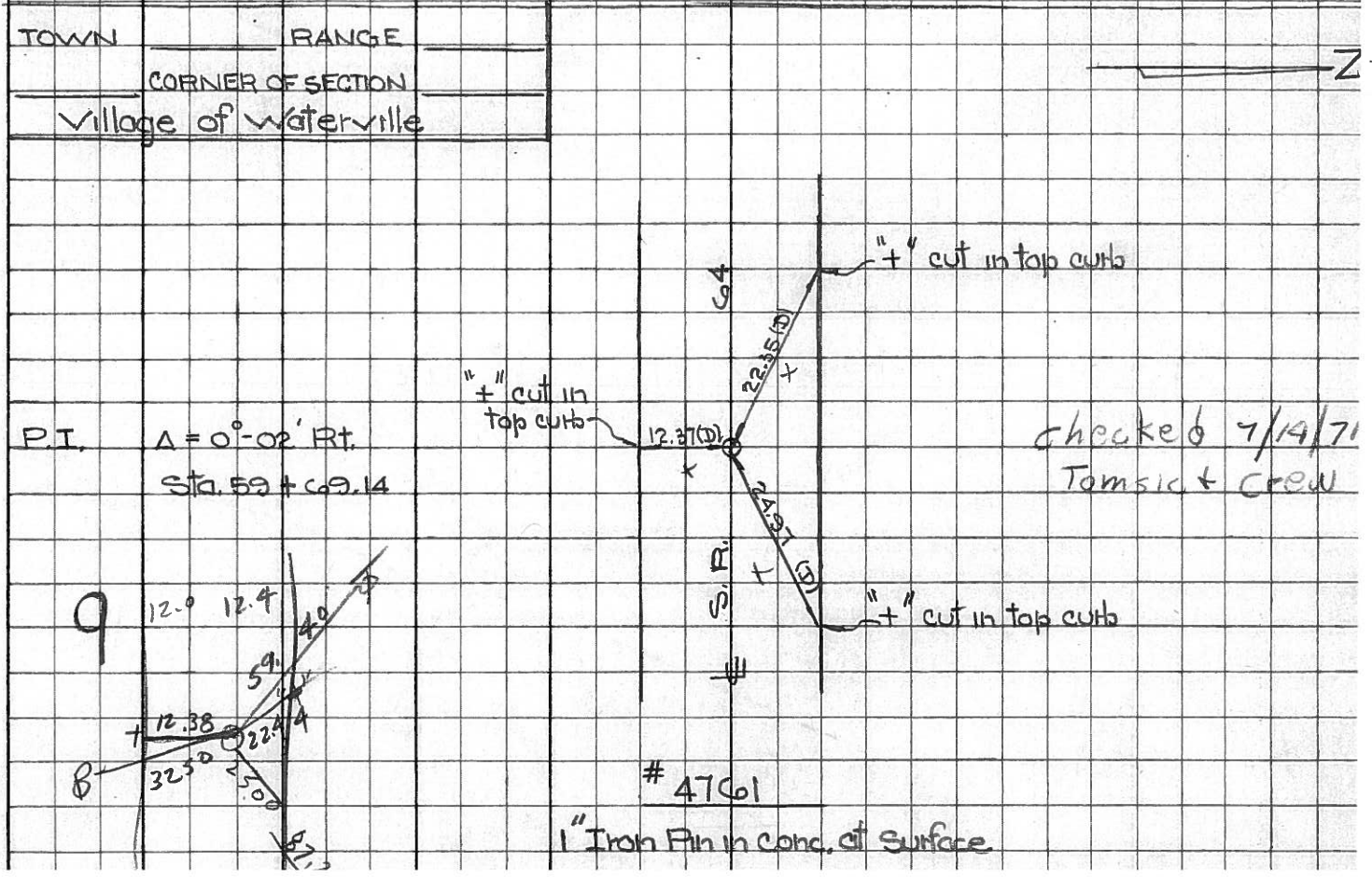
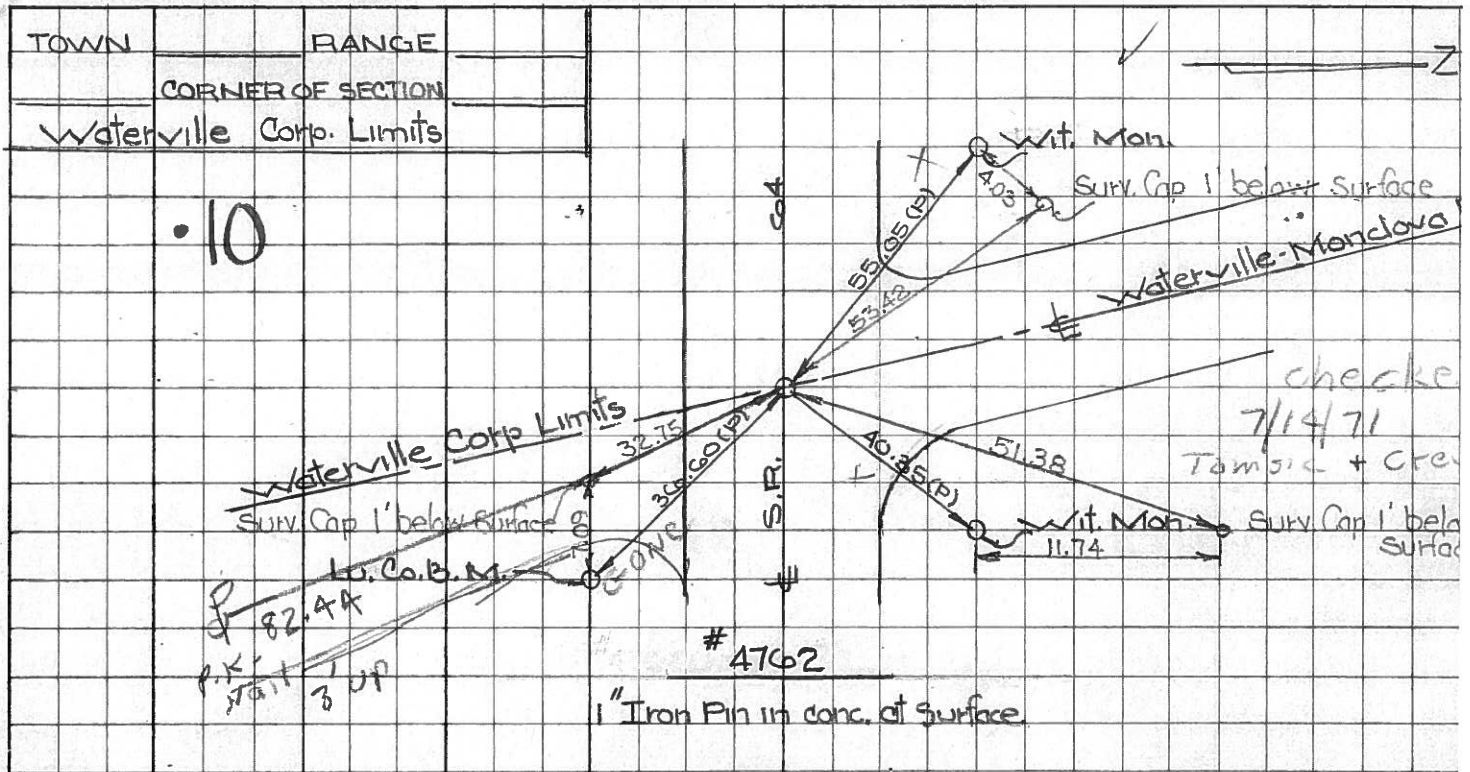
DESCRIPTION References to Control Points JOB NO. _____
 LEFT CENTER LINE RIGHT



PERSONNEL TITLE PERSONNEL TITLE
 W. Denno _____
 D. Curtis _____
 J. Teal _____

COUNTY Lucas DATE July 30, 1966
 S. R. Co4 WEATHER mild
 SEC. _____ TEMP. 70°±

DESCRIPTION S.R. Co4 - Ref. Mon. & Control Points JOB NO. 02994(0)



PERSONNEL TITLE PERSONNEL TITLE COUNTY Lucas DATE 23 Feb. 66
 Stone Beck #64 WEATHER Cool
 Brindley Schroeder SEC. Waterville - W. TEMP. 32°

DESCRIPTION Rets. To Control Pts. JOB NO.
 LEFT CENTER LINE RIGHT

6B

Int. Fifth St. 42.83' S.E. To "4" on Con. Curb (D)
 on Beck Tang. (E.) 51.81' N.E. To "4" on Con. Curb (D)
 Also Int. Farnsworth Rd. 21.67' S.W. To "4" on Con. Curb (D)
 Fd. Mabara To Surface 50.43' N.W. To "4" on Con. Curb (D)
 25.82' N. To Mabara Mon. (D)

.6A

Int. Fifth St. 60.39' S.E. To "4" on Con. Curb (D)
 on Fnd. Tang. (W) 41.41' E.N.E. To "4" on Con. Curb (D)
 Fd. Mabara To Surface 44.35' S.W. To "4" on Con. Curb (D)
 29.03' N.W. To "4" on Con. Curb (D)
 25.82' S. To Mabara Mon (D)

8

P.I. $\Delta = 0^{\circ}03' \text{ Lt.}$ 26.79' N.N.W. To Shiner in T.P. (D)
 Sta. 48+82.55 56.15' E.N.E. To Shiner in 40" Tice (D)
 Fd. 1" I. Pin in Con. 51.32' E.S.E. To Shiner in P.P. (D)
 71.14' W.S.W. To Shiner in P.P. (D)

9

P.I. $\Delta = 0^{\circ}02' \text{ Rt.}$ 22.34' N.W. To "4" on Con. Curb (D)
 Sta. 59+69.14 12.39' S. To "4" on Con. Curb (D)
 Fd. 1" I. Pin in Con. 24.98' N.E. To "4" on Con. Curb (D)

226

10

Int. Waterville-Monclova Rd. 57.78' ~~N. To Shiner in P.P. (D)~~
 Waterville Corp. line 40.40' N.N.E. To Con. Ref. Mon. (D)
 $\Delta = 0^{\circ}15' \text{ Rt.}$ 34.54' ~~N.E. To "4" in RR Spk. N. Edge (D)~~
 Fd. 1" I. Pin in Con. 36.64' S.S.E. to "4" on Lu. Co. B.M. (D)
 To Surface N.W. cor. Ref. Mon