

O.D.O.T. DISTRICT 2 SURVEY OFFICE

PERSONNEL

NOTES ROUSOS

H.C. HOMAN

R.C. MICHALAK

REFERENCE NO. 11

DATE 5-20-02

WEATHER CLOUDY

TEMP. 46

SHEET 13 OF 47

ROUTE S.R. 64

COUNTY LUCAS

TOWNSHIP WATERVILLE

SECTION 30

T 6 N R 6 E

TYPE MONUMENT Small RR SPIKE

ON SURFACE - ~~BELOW~~ ON

~~LEFT~~ - Q PAV'T - RIGHT 2.6'

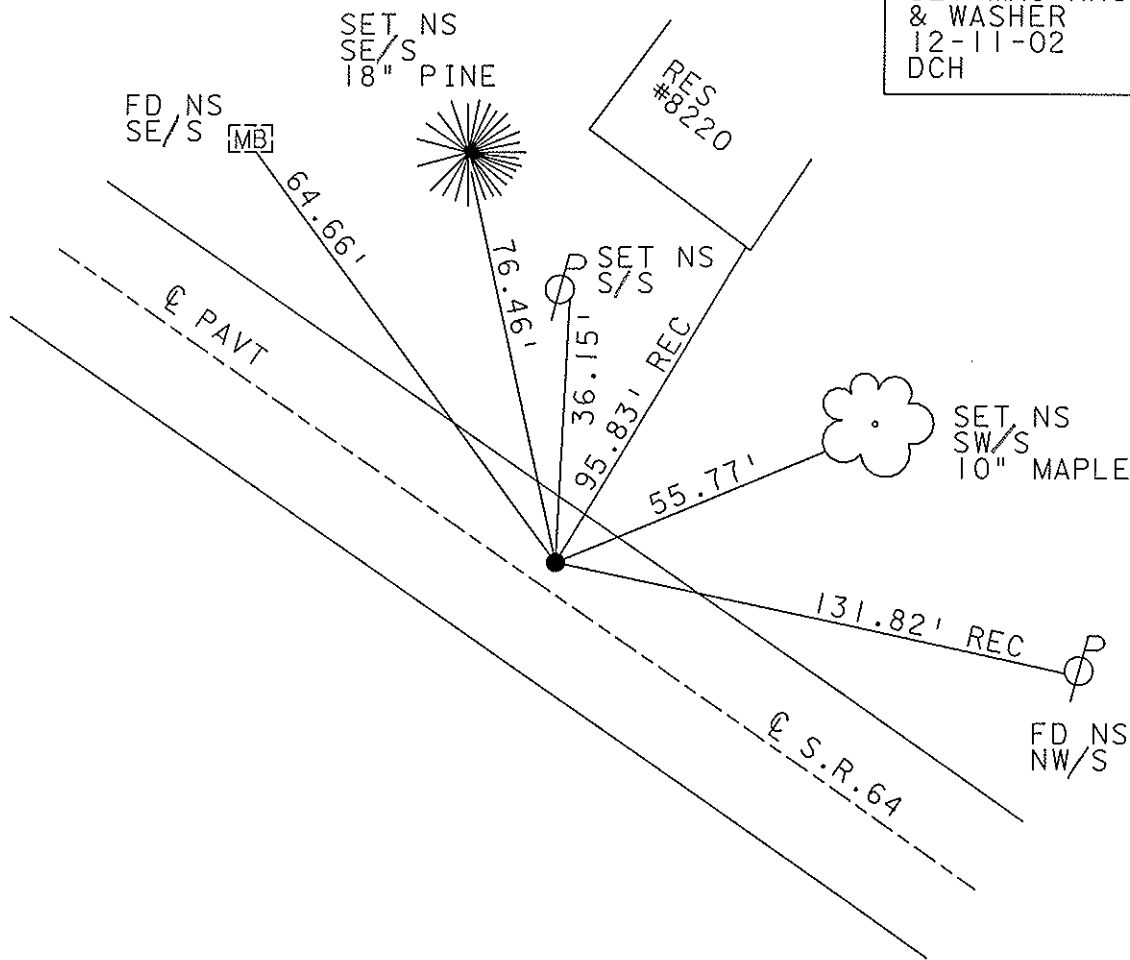
7' TO RT EDGE PAVEMENT

S.L.M. 80+37

30



SET MAG NAIL  
& WASHER  
12-11-02  
DCH



# O.D.O.T. DISTRICT 2 SURVEY OFFICE

PERSONNEL \_\_\_\_\_

REFERENCE NO. 11

SHEET 13 OF 49

NOTES LOHRKE

H.C. STONE

R.C. CURTIS

DATE 8-14-91

WEATHER Clear

TEMP. 70

ROUTE S.R. 64

COUNTY LUCAS

TOWNSHIP WATERVILLE

SECTION 30

T 6 N R 6 E

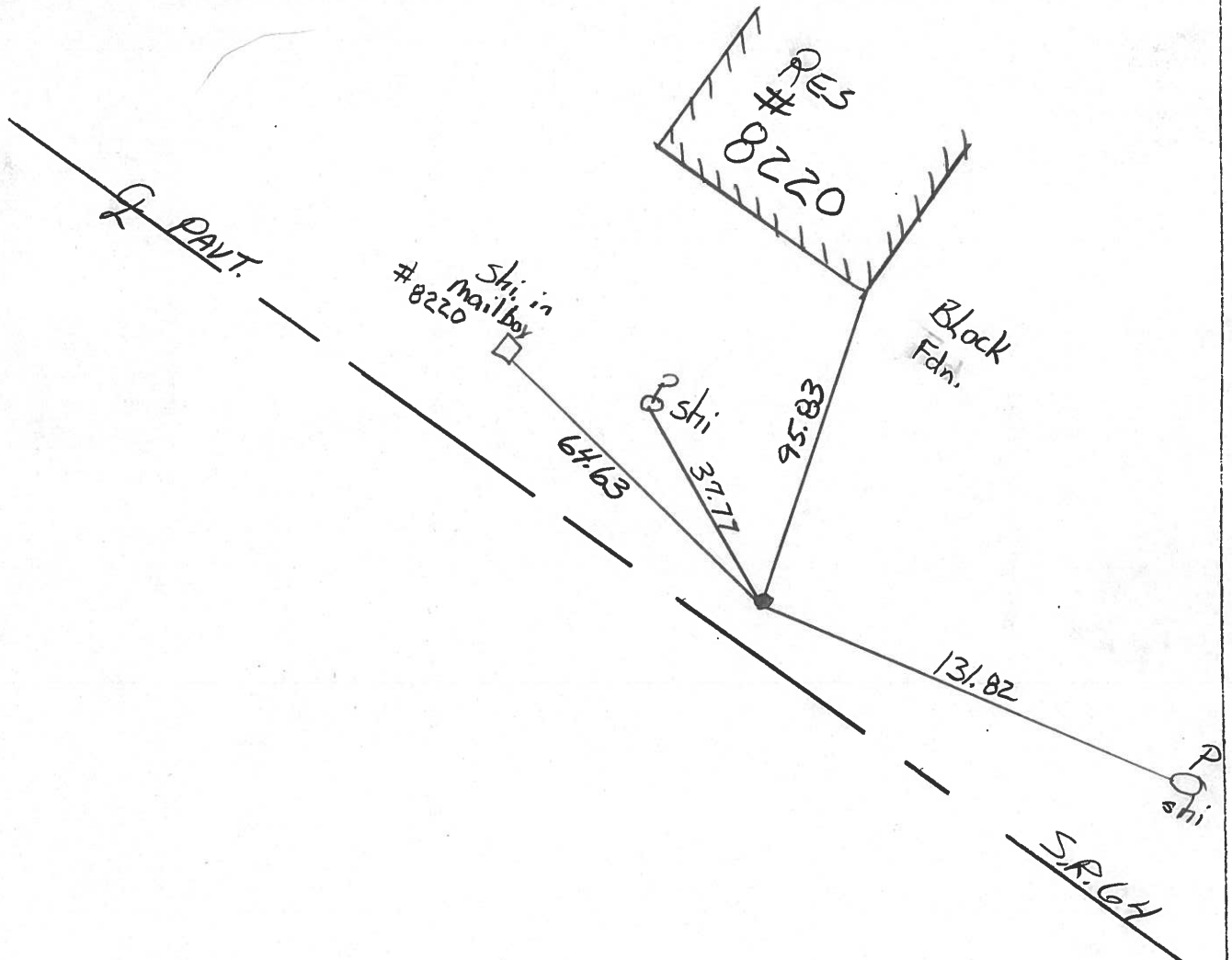
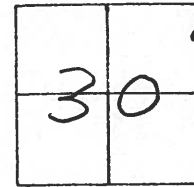
TYPE MONUMENT sm. R.R spike set Sm R.R spike

ON SURFACE - BELOW YES 3-4-92

~~LEFT~~ - C PAV'T. - RIGHT 2.6 Rt

7.1 TO Rt EDGE PAVEMENT

S.L.M. 81+07



County LUCAS S.R. 64

Township WATERVILLE

Section 30

T6N, R6E

Personnel S. Hoffman

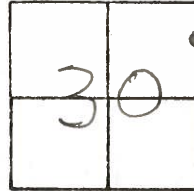
C. Loehrke

D. Householder

Date 5-21-81

Weather Clear

Temp. 75°



#11

Fd. R.R. SPK. / A

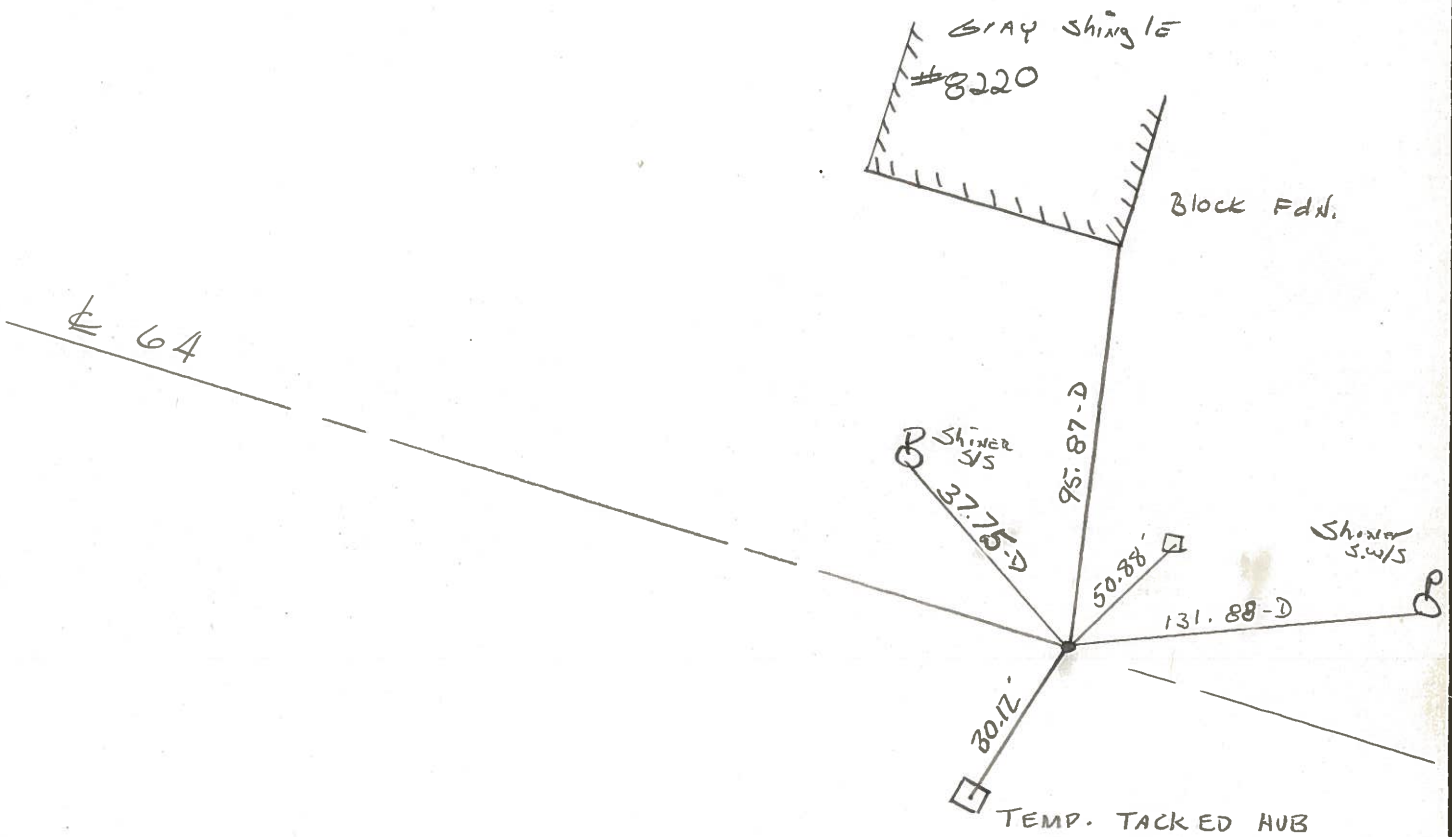
10-28-81

SWH

Fd. Small P.R. SPK. @ SURFACE

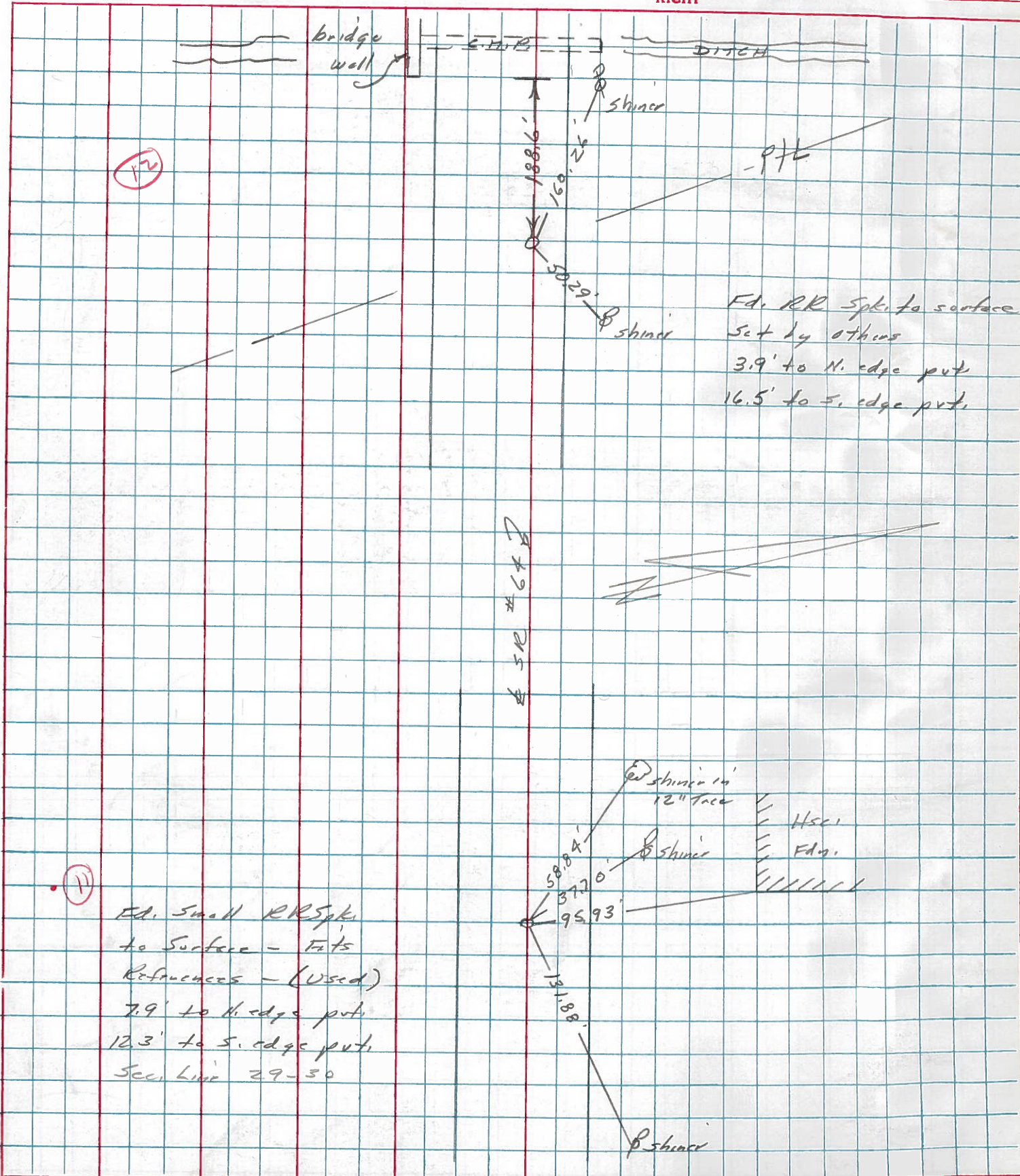
7.9 TO N. EDGE

12.3 TO S. EDGE



PERSONNEL	TITLE	PERSONNEL	TITLE	COUNTY	DATE	WEATHER	TEMP.
Stone				Lucas	28 March 77	Clear	58°
E				S. R. 64			
Crow				SEC. Waterville to Whitehse			

DESCRIPTION References to Control Points JOB NO. \_\_\_\_\_



Ed. Small RR Spk. to Surface - Fats  
References - (Used)  
7.9' to N. edge pt.  
12.3' to S. edge pt.  
Sec. Line 29-30

Fd. RR Spk. to surface  
set by others  
3.9' to N. edge pt.  
16.5' to S. edge pt.

Hsc.  
Bldg.

PERSONNEL TITLE PERSONNEL TITLE  
 W. Denna \_\_\_\_\_  
 D. Curtis \_\_\_\_\_  
 J. Teal \_\_\_\_\_

COUNTY Lucas DATE July 30, 1968

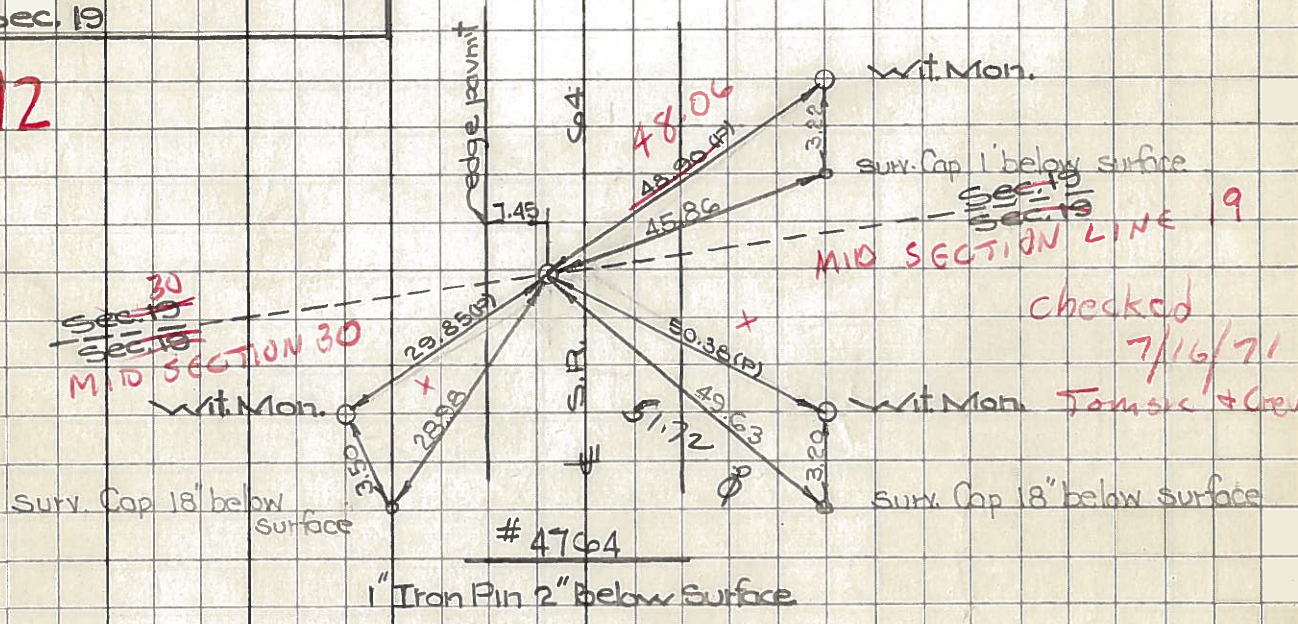
S. R. C64 WEATHER mild

SEC. \_\_\_\_\_ TEMP. 70°±

DESCRIPTION S.R. C64 - Ref. Mon. & Control Points JOB NO. 02994(0)  
 LEFT CENTER LINE RIGHT

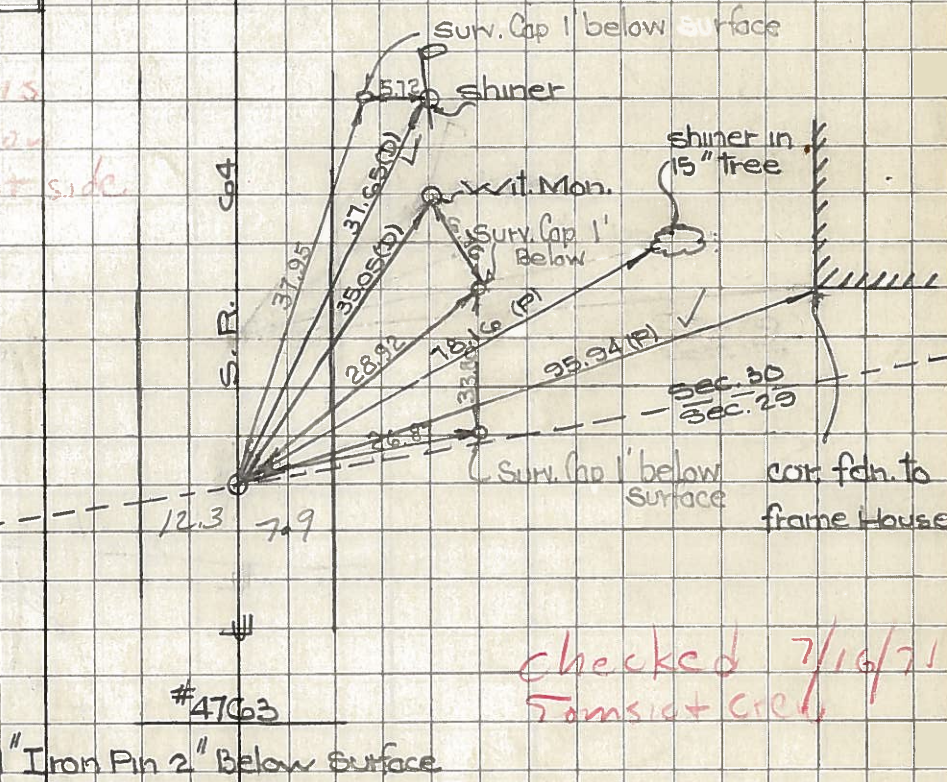
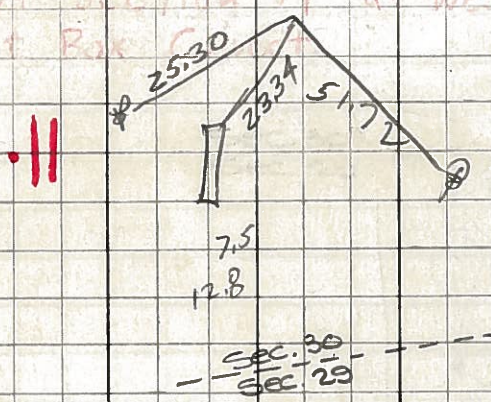
TOWN	C6-N	RANGE	10-E
CORNER OF SECTION			
N. & S. Sec. 19			

12



TOWN	C6-N	RANGE	10-E
CORNER OF SECTION			
Sec. Line 29 & 30			

Note: this point is in the S.W. 1/4 section of section 19 at west side of Box C.



PERSONNEL TITLE PERSONNEL TITLE

COUNTY Lucas DATE 24 Feb. 66

Stone

Beck

Brindley

Schroeder

S. R. #64

WEATHER Damp

SEC. Waterville - W.

TEMP. 30°

DESCRIPTION

Refs. To Control Pts.

JOB NO.

LEFT

CENTER LINE

RIGHT

	LEFT	CENTER LINE	RIGHT
11 #225	E. Line Sec. 30	35.13'	N.W. To Cor. Ref. Mon. (D)
	Fd. 1" I. Pin 2" Below Surface	37.68'	N.W. To Shiner in P.P. (D)
	$\Delta = 0^\circ 40' \text{ Lt.}$	78.19'	N.N.W. To Shiner in 15" Tree (D)
	Sta. 81+08.86	95.90	N. To S.E. Cor. Edn. To House (D)
12 #224	N&S $\pm$ Sec. 19	48.18'	N.W. To Con. Wit. Mon. (D)
	Sta. 109+98.31	50.47'	N.E. To Con. Wit. Mon. (D)
	$\Delta = 0^\circ 25' \text{ Rt.}$	29.84'	S.E. To Con. Wit. Mon. (D)
	Fd. 1" I. Pin 2" Below Surface		
15 #223	$\frac{1}{2}$ Cor. Sec. 19	45.18'	N.E. To Con. Wit. Mon. (D)
	Sta. 122+50.59	79.29'	S.W. To Shiner in P.P. (D)
	$\Delta = 0^\circ 39' 30" \text{ Lt.}$	23.64'	S. To Con. Wit. Mon. (D)
	Fd. 1" I. Pin 2" Below Surface	44.94'	N.E. To Shiner in T.P. (D)
16 #220	Sta. 138+30.95	62.82'	N.N.W. To Con. Wit. Mon. (D)
	$\Delta = 0^\circ 34' \text{ Rt.}$	29.65'	S.S.E. To Shiner in P.P. (D)
	Fd. 1" I. Pin 2" Below Surface	30.23'	S.W. To S.W. Cor. Bridge Wall (D)
17 #220	W. Line Sec. 19	64.49'	N.E. To Shiner in T.P. (D)
	Sta. 142+55.22	105.25'	N.W. To Shiner in T.P. (D)
	$\Delta = 0^\circ 44' 15" \text{ Lt.}$	95.54'	W.S.W. To Shiner in P.P. (D)
	Fd. 1" I. Pin 2" Below Surface		
18 #219	Int. Nward Rd	41.00'	N. To Con. Wit. Mon. (D)
	E. Line Sec. 1	51.82'	S.E. To "t" in Lu. Co. B.M. (D)
	Sta. 157+30.77	33.70'	S.W. To Con. Wit. Mon. (D)
	$\Delta = 0^\circ 08' 30" \text{ Rt.}$ Fd. 1" I. Pin 2" Below Surface		