

O.D.O.T. DISTRICT 2 SURVEY OFFICE

PERSONNEL

REFERENCE NO. 12

SHEET 14 OF 47

NOTES ROUSOS

DATE 5-20-02

ROUTE S.R. 64

H.C. HOMAN

WEATHER CLOUDY

COUNTY LUCAS

R.C. MICHALAK

TEMP. 48

TOWNSHIP WATERVILLE

SECTION 30

T 6 N R 6 E

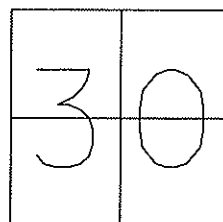
TYPE MONUMENT Small RR SPIKE

ON SURFACE - ~~BELOW~~ ON

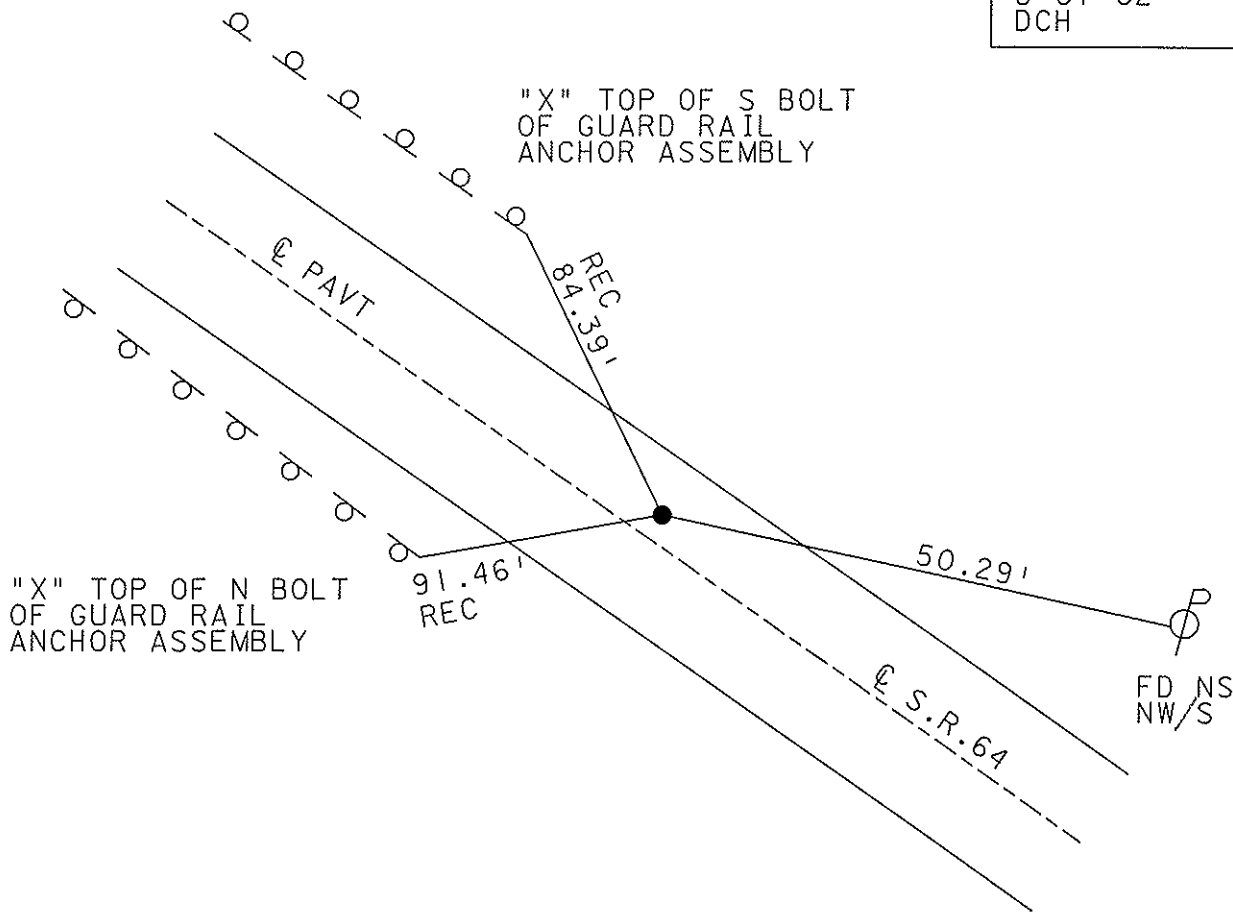
~~LEFT~~ - Q PAVT - RIGHT 6.5'

4' TO RT EDGE PAVEMENT

S.L.M. 87+13



SET PK NAIL  
& WASHER  
8-07-02  
DCH



O.D.O.T. DISTRICT 2 SURVEY OFFICE

PERSONNEL

REFERENCE NO. 12

SHEET 14 OF 49

NOTES LOEHRKE

H.C. STONE

R.C. CURTIS

DATE 8-12-91

WEATHER NICE

TEMP. +80

ROUTE S.R. 64

COUNTY LUCAS

TOWNSHIP WATERVILLE

SECTION 30

T 6 N R 6 E

TYPE MONUMENT Sm. RR. Spike

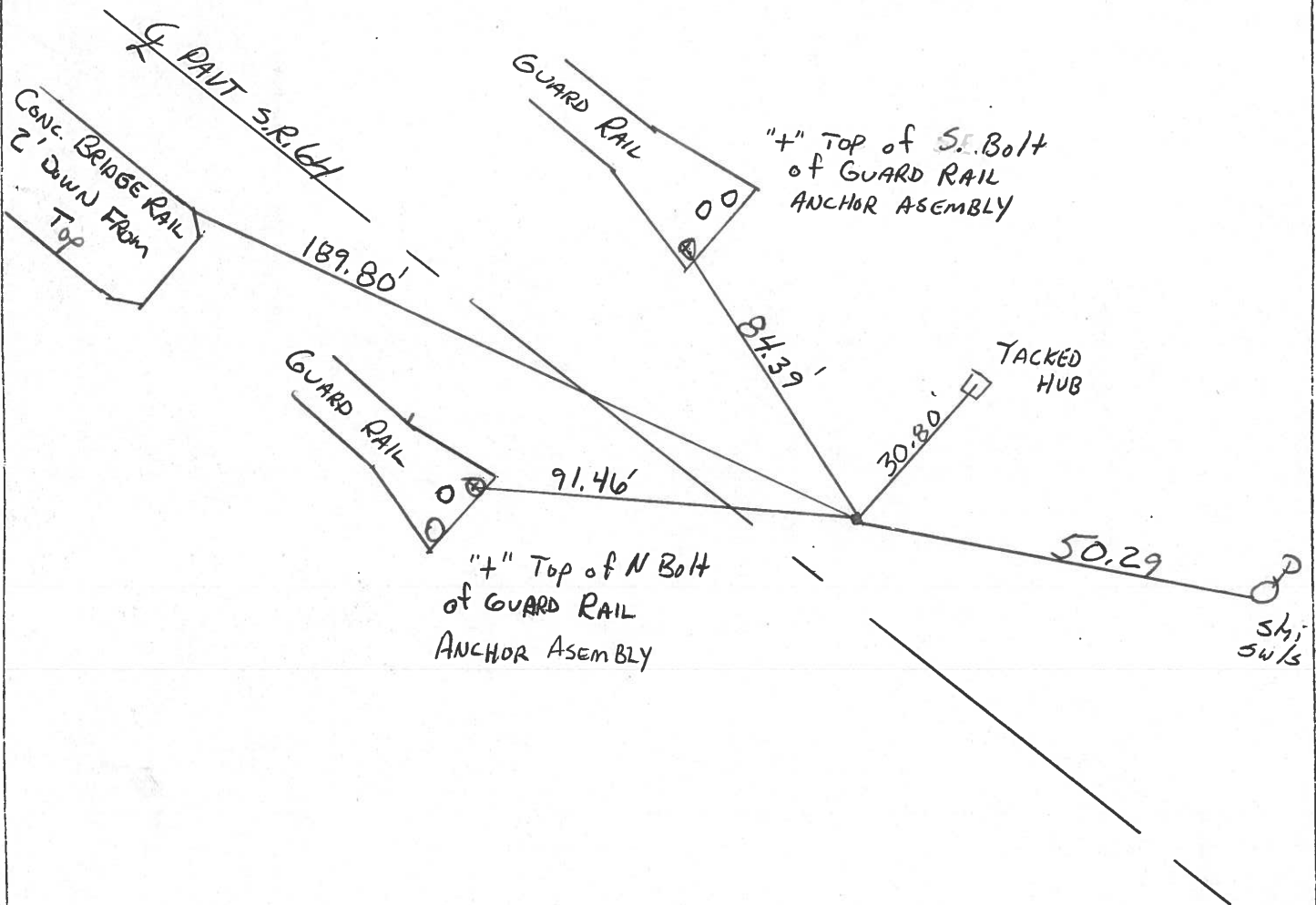
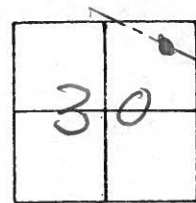
Set Sm. RR. Spike  
3-4-92

ON SURFACE - BELOW Yes

~~LEFT~~ - C PAV'T. - RIGHT 6.5'

3.5 TO R+ EDGE PAVEMENT

S.L.M. 87 +73



County LUCAS S.R. 64

Township WATERVILLE

Section 30

T6N, R6E

Personnel S. Hoffmann

C. Doehrke

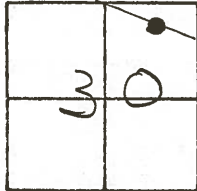
J. Householder

#12

Date 5-21-81

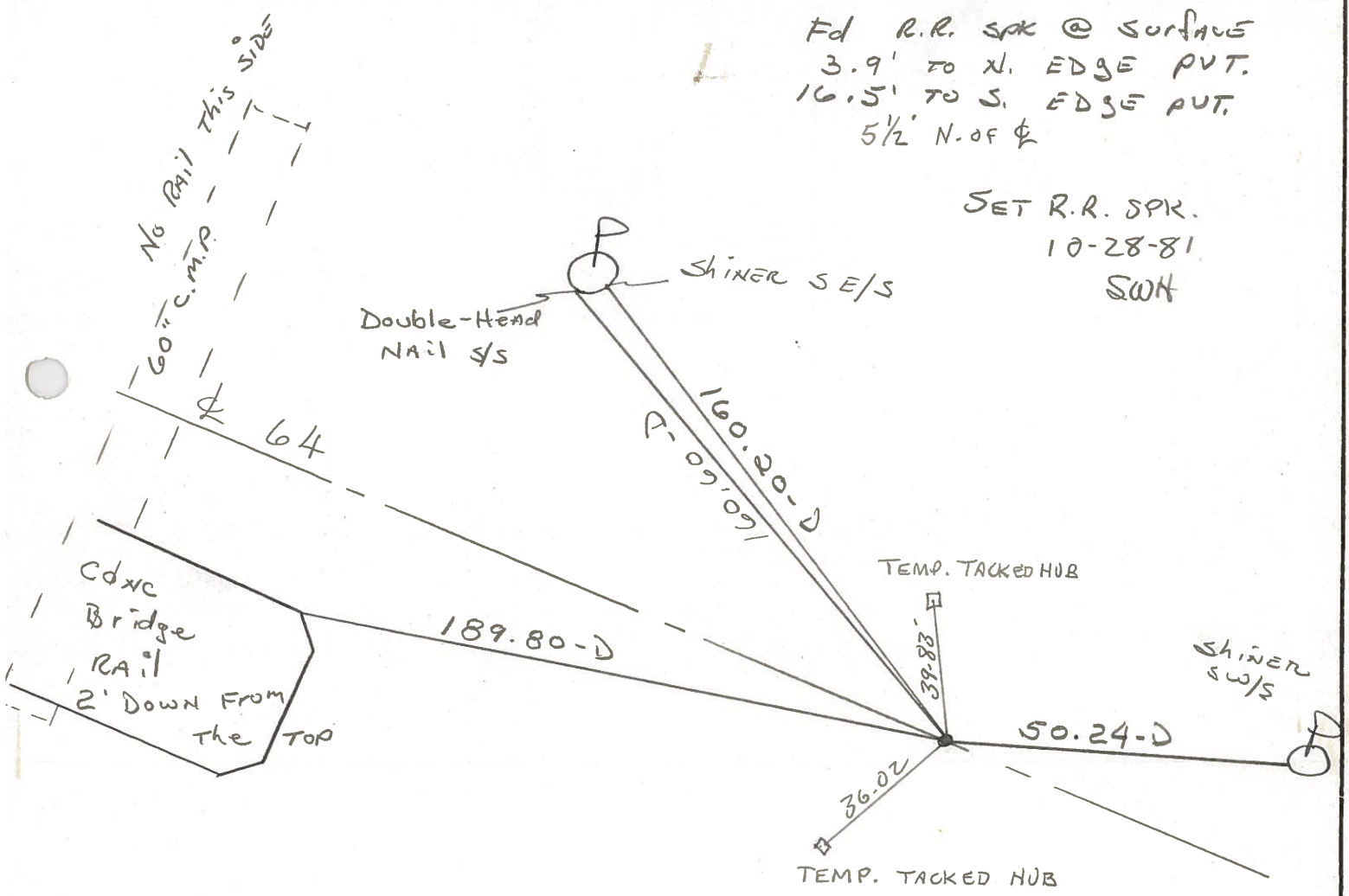
Weather SUNNY - CLEAR

Temp. 75°



Fd R.R. SPK @ SURFACE  
 3.9' TO N. EDGE PVT.  
 16.5' TO S. EDGE PVT.  
 5 1/2' N. OF  $\phi$

SET R.R. SPK.  
 10-28-81  
 SWH



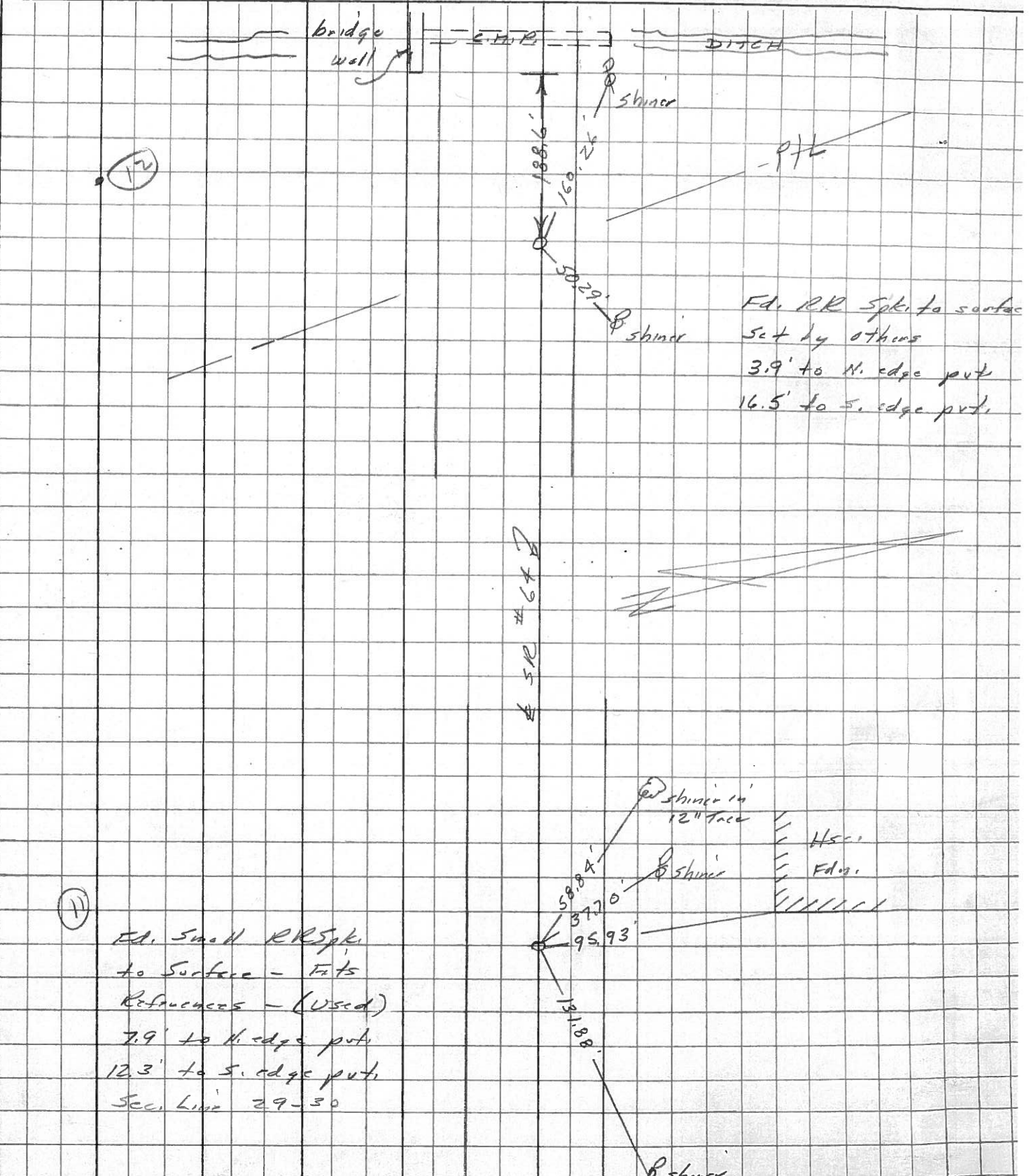
PERSONNEL	TITLE	PERSONNEL	TITLE
Stone			
E			
Crow			

COUNTY Lucas DATE 28 March 7

S. R. 64 WEATHER Clear

SEC. Waterville to Whitehac TEMP. 58°

DESCRIPTION References to Control Points JOB NO.

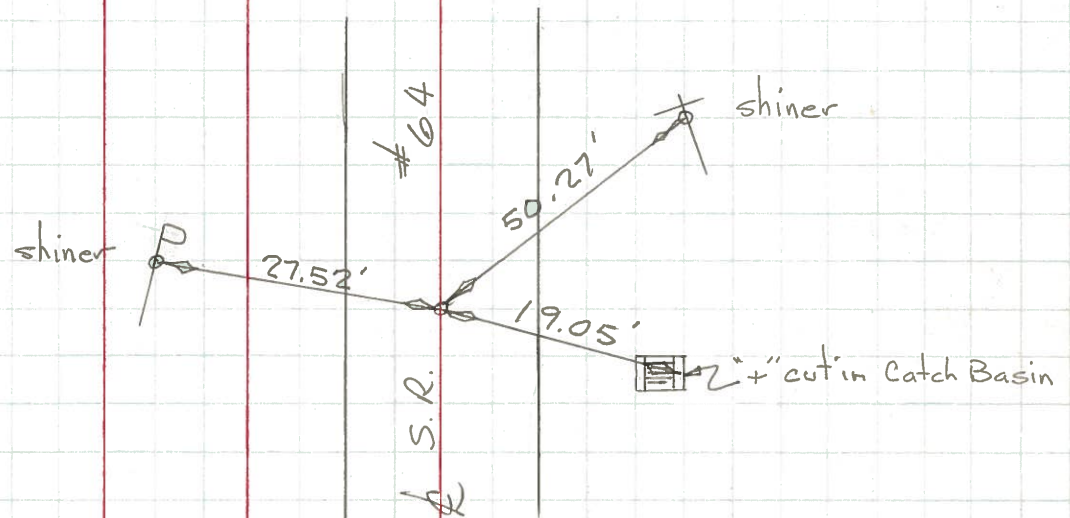


PERSONNEL	TITLE	PERSONNEL	TITLE
Tomasic			
Vanyo			
Granata			
Jackson			

COUNTY Lucas DATE July 23, 1971  
 S. R. #64 WEATHER \_\_\_\_\_  
 SEC. \_\_\_\_\_ TEMP. \_\_\_\_\_

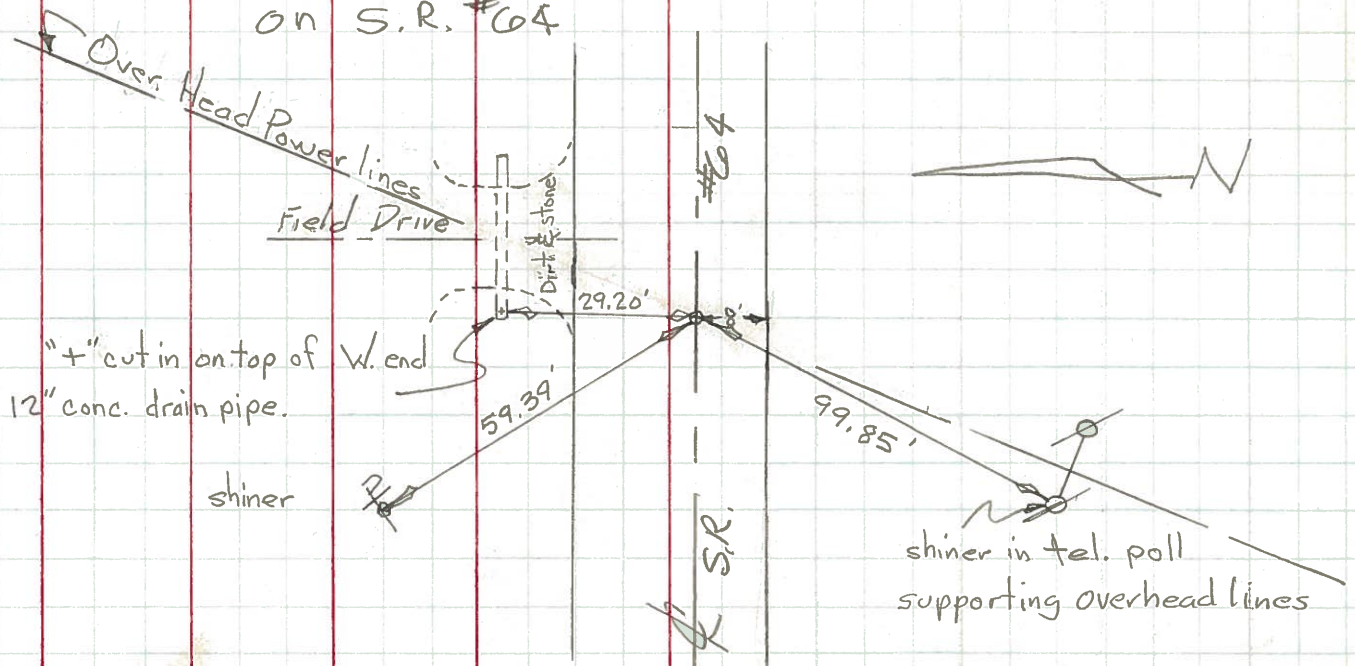
DESCRIPTION Reference Mon. S.R. #64 JOB NO. \_\_\_\_\_

Point located at S. E. property corner Diamond "L" Ranch Res.



Found P.K. Nail at Surface

Point is Located 2640'± W. of the W. Corp. Line of Waterville on S.R. #64

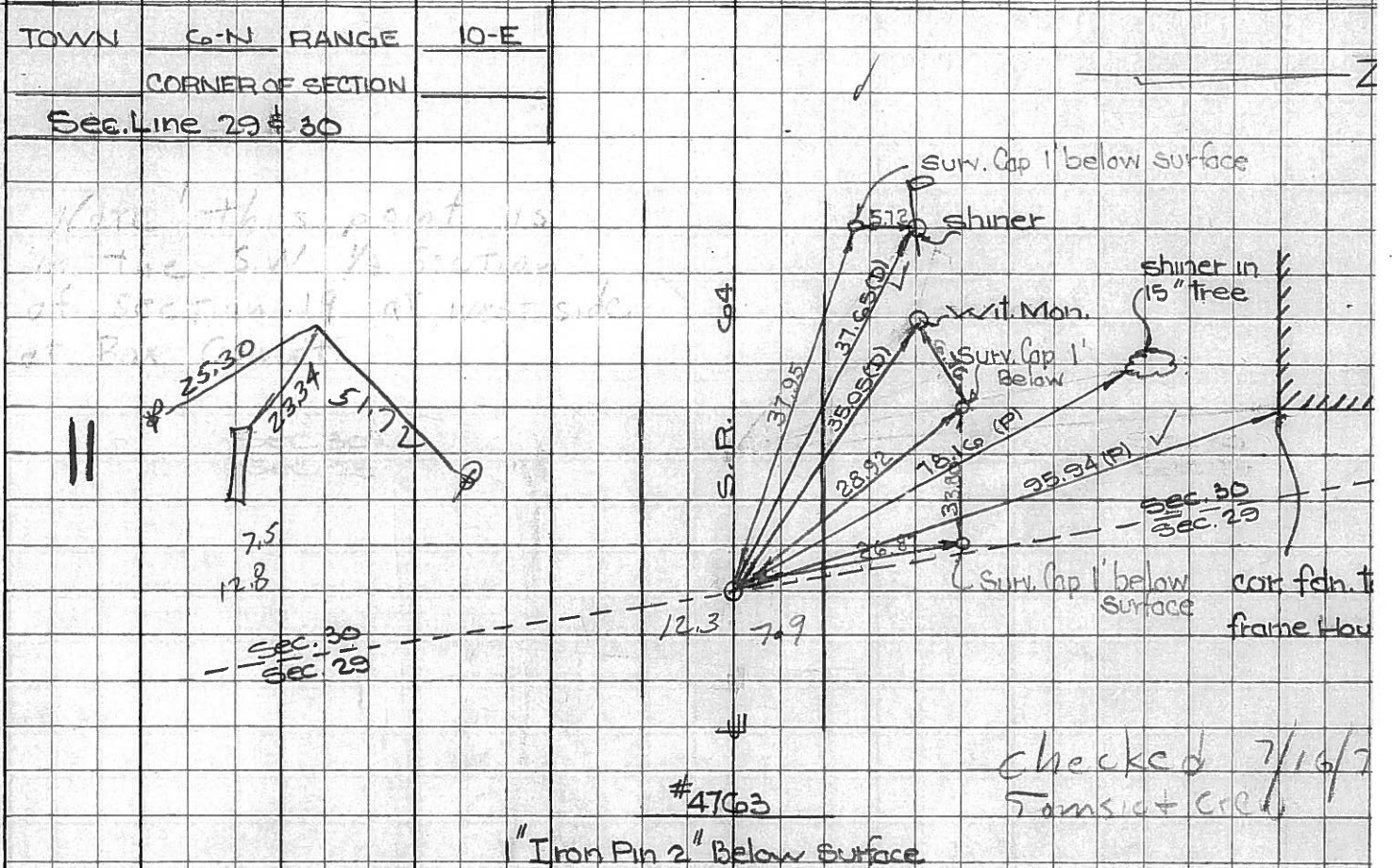
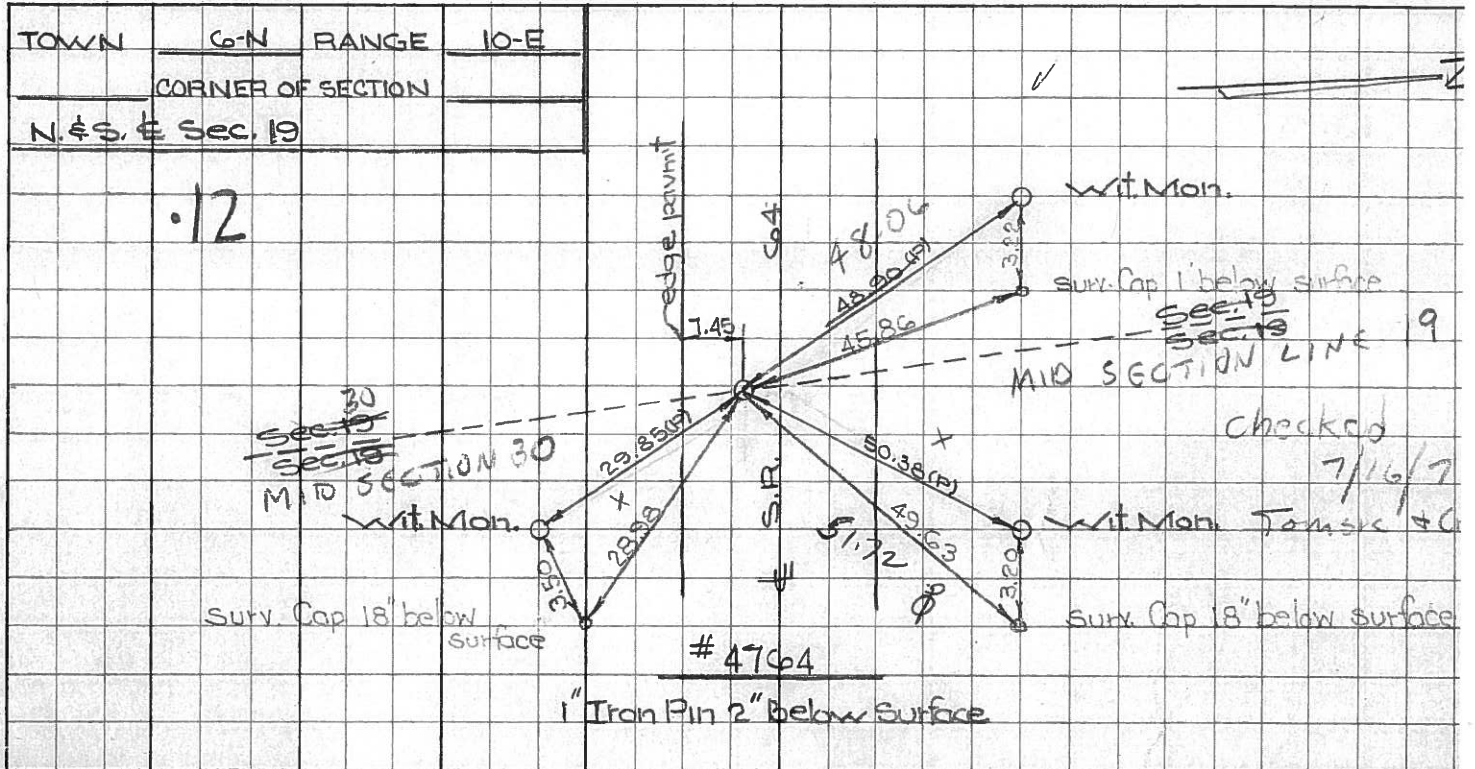


Found P.K. Nail at surface

PERSONNEL TITLE PERSONNEL TITLE  
 W. Denno \_\_\_\_\_  
 D. Curtis \_\_\_\_\_  
 J. Teal \_\_\_\_\_

COUNTY Lucas DATE July 30, 1966  
 S. R. Co4 WEATHER mild  
 SEC. \_\_\_\_\_ TEMP. 70°±

DESCRIPTION S.R. Co4 - Ref. Mon. & Control Points LEFT CENTER LINE RIGHT JOB NO. 02994(0)



PERSONNEL TITLE PERSONNEL TITLE

COUNTY Lucas DATE 24 Feb. 66

Stone

Beck

Brindley

Schroeder

S. R. #64

WEATHER Damp

SEC. Waterville - W.

TEMP. 30°

DESCRIPTION

LEFT

CENTER LINE

RIGHT

JOB NO.

Refs. To Control Pts.

DESCRIPTION	LEFT	CENTER LINE	RIGHT	JOB NO.
<b>11</b>				
#225	E. Line Sec. 30	35.13'	N.W. To Cor. Ref. Mon. (D)	
	Fd. 1" I. Pin 2" Below Surface	37.68'	N.W. To Shiner in P.P. (D)	
	$\Delta = 0^\circ 40' \text{ Lt.}$	78.19'	N.N.W. To Shiner in 15" Tree (D)	
	Sta. 81+08.86	95.90	N. To S.E. Cor. Edn. To House (D)	
<b>12</b>				
#224	N&S E Sec. 19	48.18'	N.W. To Con. Wit. Mon. (D)	
	Sta. 109+98.31	50.47'	N.E. To Con. Wit. Mon. (D)	
	$\Delta = 0^\circ 25' \text{ Rt.}$	29.84'	S.E. To Con. Wit. Mon. (D)	
	Fd. 1" I. Pin 2" Below Surface			
<b>15</b>				
#223	1/2 Cor. Sec. 19	45.18'	N.E. To Con. Wit. Mon. (D)	
	Sta. 122+50.59	79.29'	S.W. To Shiner in P.P. (D)	
	$\Delta = 0^\circ 29' 30" \text{ Lt.}$	23.64'	S. To Con. Wit. Mon. (D)	
	Fd. 1" I. Pin 2" Below Surface	44.94'	N.E. To Shiner in T.P. (D)	
<b>16</b>				
	Sta. 138+30.95	62.82'	N.N.W. To Con. Wit. Mon. (D)	
	$\Delta = 0^\circ 34' \text{ Rt.}$	29.65'	S.S.E. To Shiner in P.P. (D)	
	Fd. 1" I. Pin	30.23'	S.W. To S.W. Cor. Bridge Wall (D)	
	2" Below Surface			
<b>17</b>				
#220	W. Line Sec. 19	64.49'	N.E. To Shiner in T.P. (D)	
	Sta. 142+55.22	105.25'	N.W. To Shiner in T.P. (D)	
	$\Delta = 0^\circ 44' 15" \text{ Lt.}$	95.54'	W.S.W. To Shiner in P.P. (D)	
	Fd. 1" I. Pin			
	2" Below Surface			
<b>18</b>				
#219	Int. Nward Rd	41.00'	N. To Con. Wit. Mon. (D)	
	E. Line Sec. 1	51.82'	S.E. To "t" in Lu. Co. B.M. (D)	
	Sta. 157+30.77	33.70'	S.W. To Con. Wit. Mon. (D)	
	$\Delta = 0^\circ 08' 30" \text{ Rt.}$			
	Fd. 1" I. Pin 2" Below Surface			