

O.D.O.T. DISTRICT 2 SURVEY OFFICE

PERSONNEL

NOTES ROUSOS

H.C. HOMAN

R.C. MICHALAK

REFERENCE NO. 13

DATE 5-20-02

WEATHER CLOUDY

TEMP. 48

SHEET 15 OF 47

ROUTE S.R. 64

COUNTY LUCAS

TOWNSHIP WATERVILLE

SECTION 30

T 6 N R 6 E

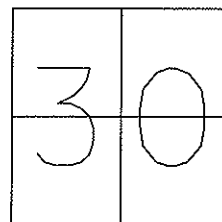
TYPE MONUMENT PK NAIL & WASHER

ON SURFACE - ~~BELOW~~ ON

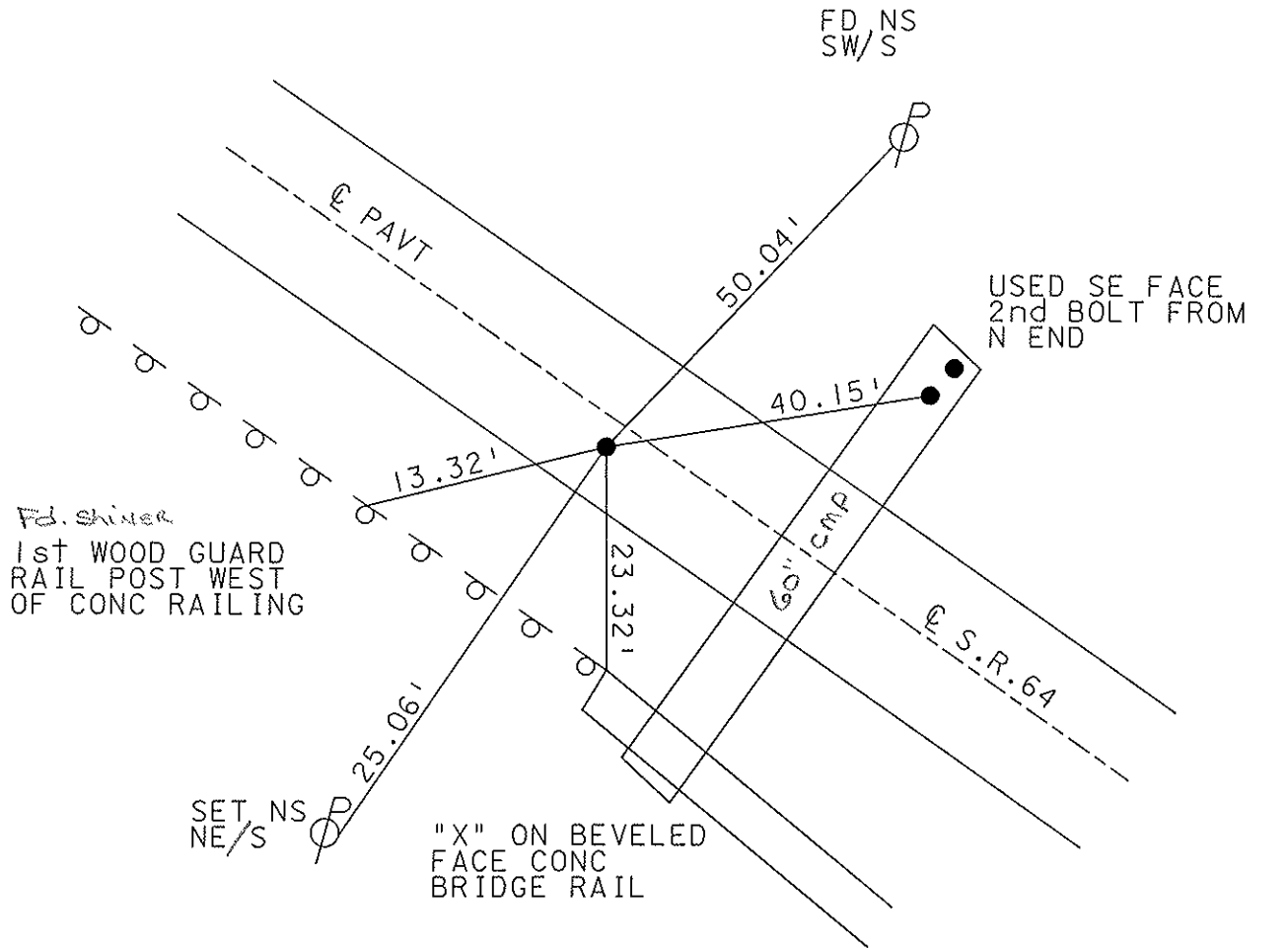
LEFT - Q PAV'T - ~~RIGHT~~ 3.0'

7' TO LT EDGE PAVEMENT

S.L.M. 109+29



SET MAG NAIL
& WASHER
12-11-02
DCH



O.D.O.T. DISTRICT 2 SURVEY OFFICE

PERSONNEL

REFERENCE NO. 13

SHEET 15 OF 49

NOTES LOEHRKE

H.C. STONE

R.C. CURTIS

DATE 8-12-91

WEATHER Clear

TEMP. +78

ROUTE S.R. 64

COUNTY LUCAS

TOWNSHIP WATERVILLE

SECTION 30

T 6 N R 6 E

TYPE MONUMENT R.R. Spike

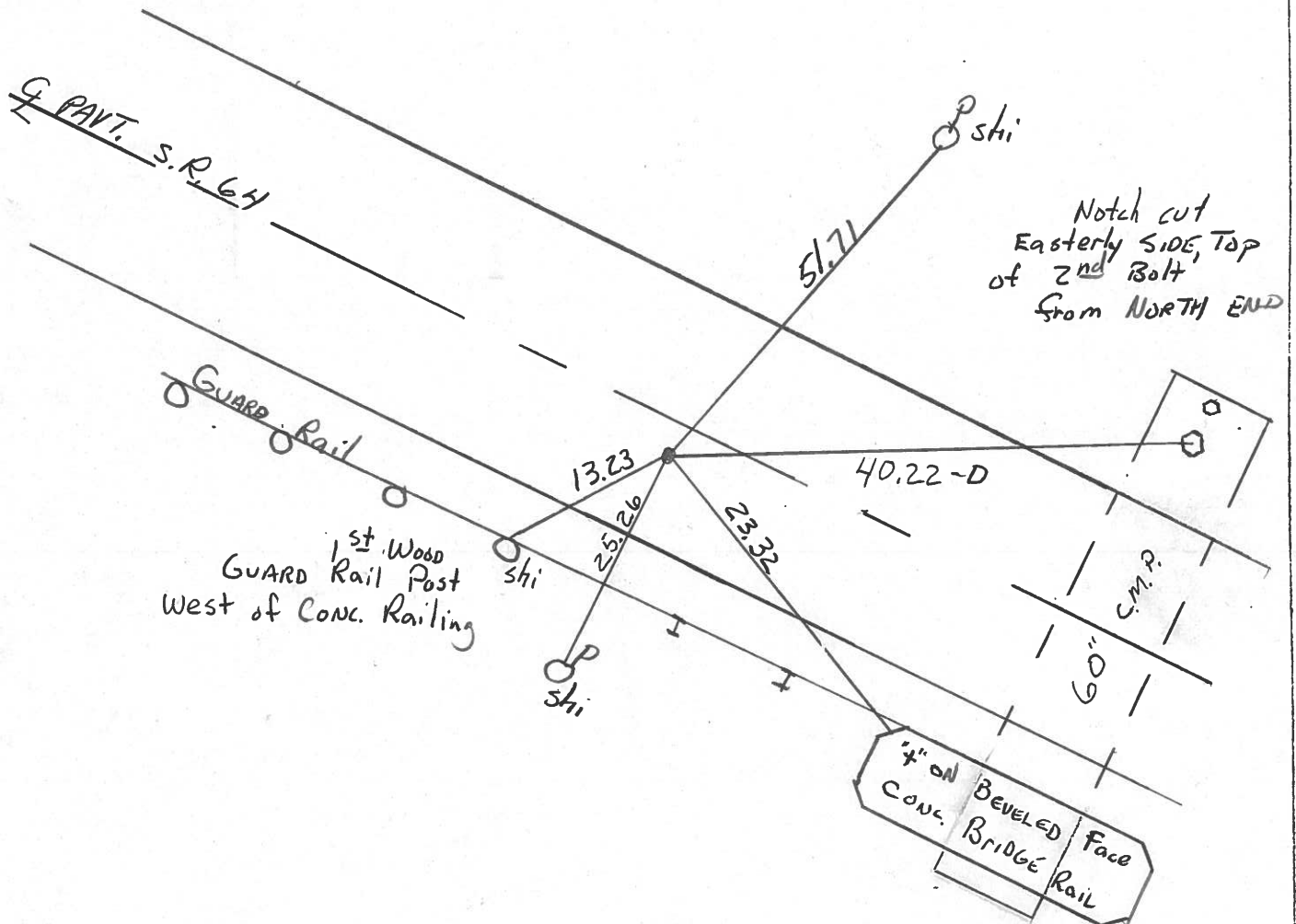
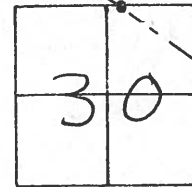
Set P.K. Nail
3-4-92

ON SURFACE - BELOW

LEFT - C PAV'T. - RIGHT 3.0'

7.5 TO Lt. EDGE PAVEMENT

S.L.M. 109+97



County LUCAS S.R. 64

Township WATERVILLE

Section 30

T6N, R6E

Personnel S. Noffman

C. Loehrke

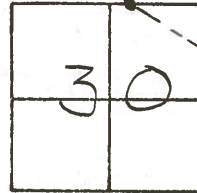
J. Householder

13

Date 5-21-81

Weather clear

Temp. 75°



FD. R.R. SPK. / t

10-28-81

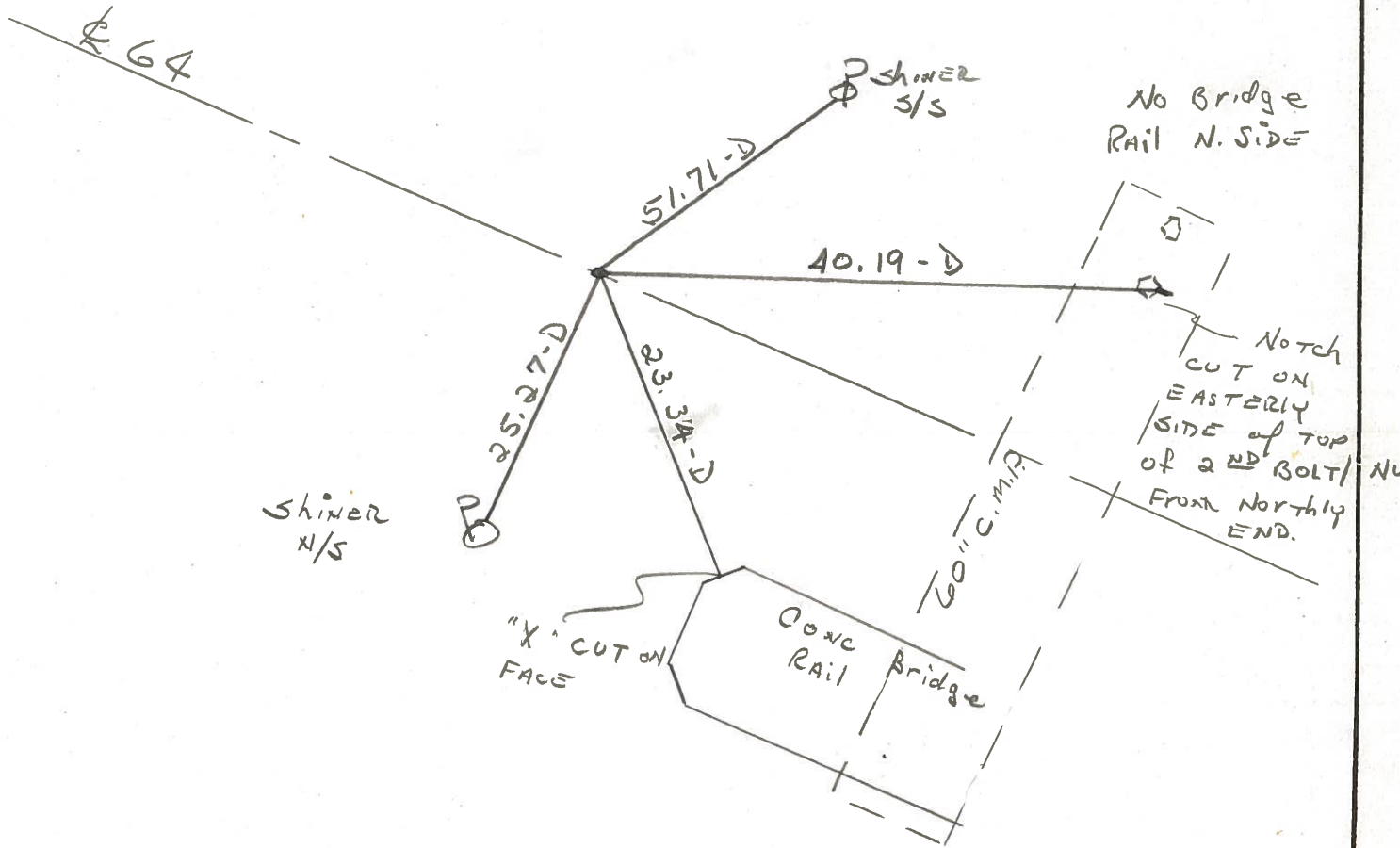
SWH

FD. R.R. SPK @ SURFACE

ON S. LINE SEC. 19.

7.5' TO S. EDGE PVT.

12.8' TO N. EDGE PVT.



PERSONNEL	TITLE	PERSONNEL	TITLE	COUNTY	DATE	WEATHER	TEMP.
Stave				Lucas	29 March 77	Windy	62°
Crew				S. R. 67			
				SEC. Waterville to Whitehouse			

DESCRIPTION References to Central Points JOB NO. _____

LEFT CENTER LINE RIGHT

