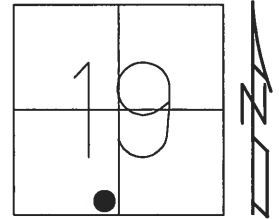


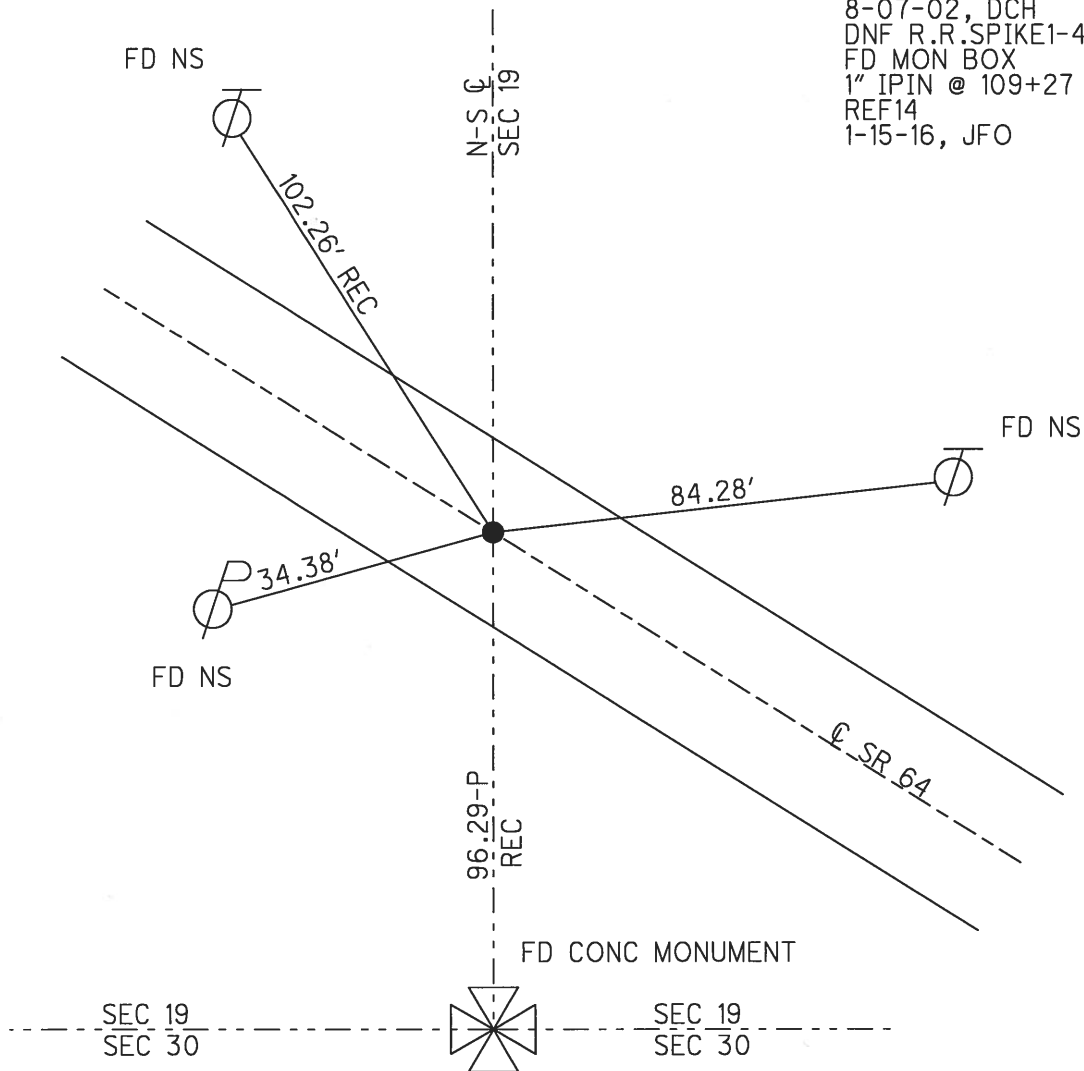
O.D.O.T. DISTRICT 2 SURVEY OFFICE (USE ONLY)

PERSONNEL _____ REFERENCE NO. 14 SHEET 1 OF 50
 NOTES ROUSOS DATE 5-20-02 ROUTE SR 64
 H.C. HOMAN WEATHER CLOUDY COUNTY LUCAS
 R.C. MICHALAK TEMP. 48° TOWNSHIP WATERVILLE
 _____ SECTION 19
 _____ T 6 N R 10 E

TYPE MONUMENT R.R.SPIKE
 ON SURFACE - ~~BELOW~~ ON _____
 LEFT - ☉ PAV'T - ~~RIGHT~~ 3.0'
7' TO LT EDGE PAVEMENT
 S.L.M. 108+93.71
 Grid: Northing: 673077.6129 Easting: 1626023.0794



RECORD:
 SET P.K.NAIL/WASHER
 8-07-02, DCH
 DNF R.R.SPIKE1-4-16, JFO
 FD MON BOX
 1" IPIN @ 109+27
 REF14
 1-15-16, JFO



O.D.O.T. DISTRICT 2 SURVEY OFFICE

PERSONNEL

NOTES _____
 H.C. ROUSOS
 R.C. HOMAN

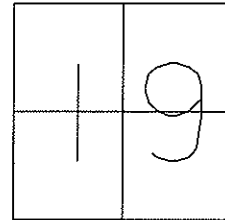
REFERENCE NO. 14

DATE 5-20-02
 WEATHER CLOUDY
 TEMP. 48

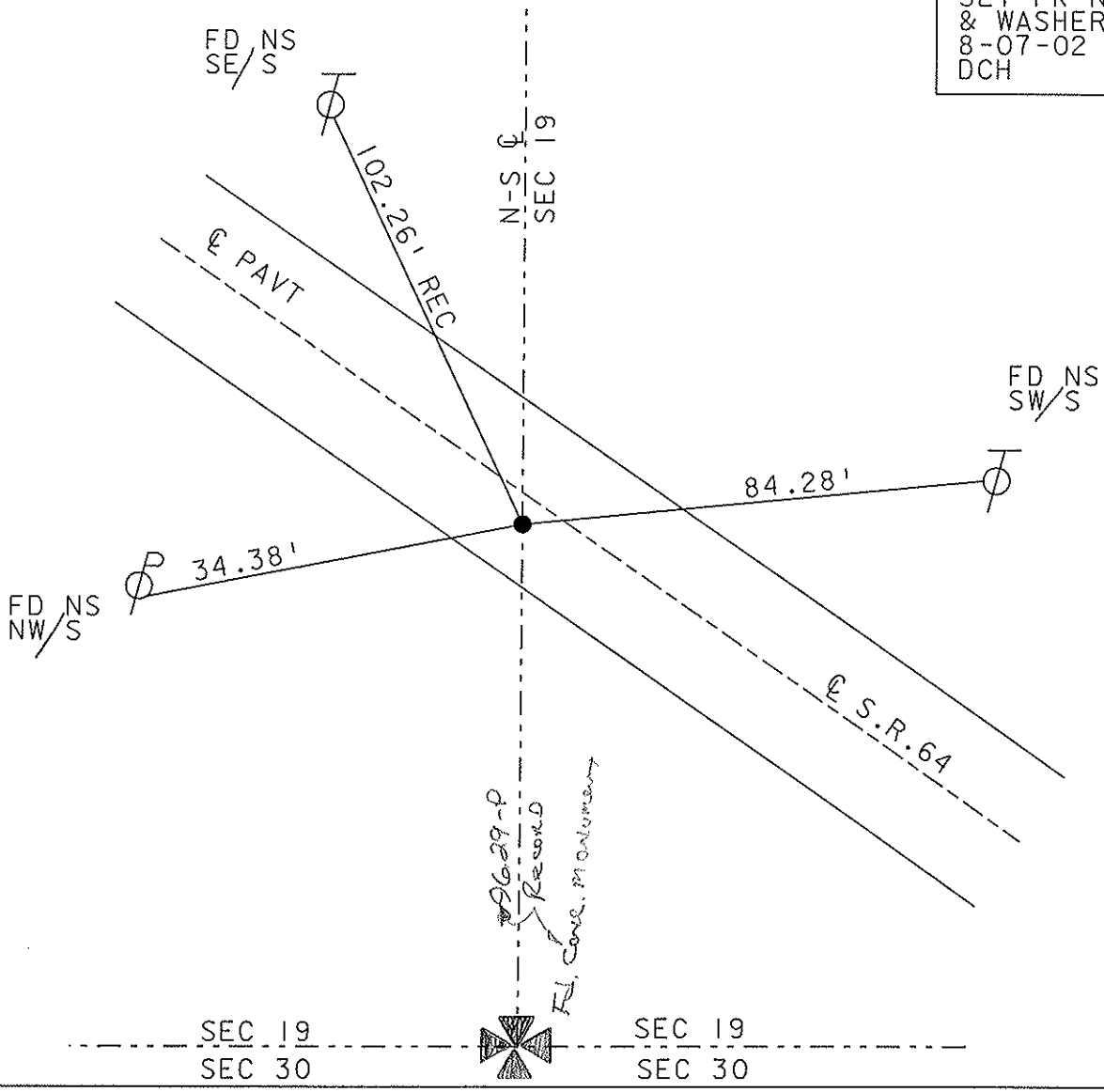
SHEET 16 OF 47

ROUTE S.R. 64
 COUNTY LUCAS
 TOWNSHIP WATERVILLE
 SECTION 19
T 6 N R 5 E

TYPE MONUMENT RR SPIKE
 ON SURFACE - ~~BELOW~~ ON
 LEFT - Q PAVT - ~~RIGHT~~ 3.0'
7' TO LT EDGE PAVEMENT
 S.L.M. 114+52



SET PK NAIL
 & WASHER
 8-07-02
 DCH



O.D.O.T. DISTRICT 2 SURVEY OFFICE

PERSONNEL

REFERENCE NO. 14

SHEET 16 OF 49

NOTES Loehrke

H.C. STONE

R.C. CURTIS

DATE 8-12-91

WEATHER CLEAR

TEMP. +77

ROUTE S.R. 69

COUNTY Lucas

TOWNSHIP WATERVILLE

SECTION 19

T. 6 N R. 5 E

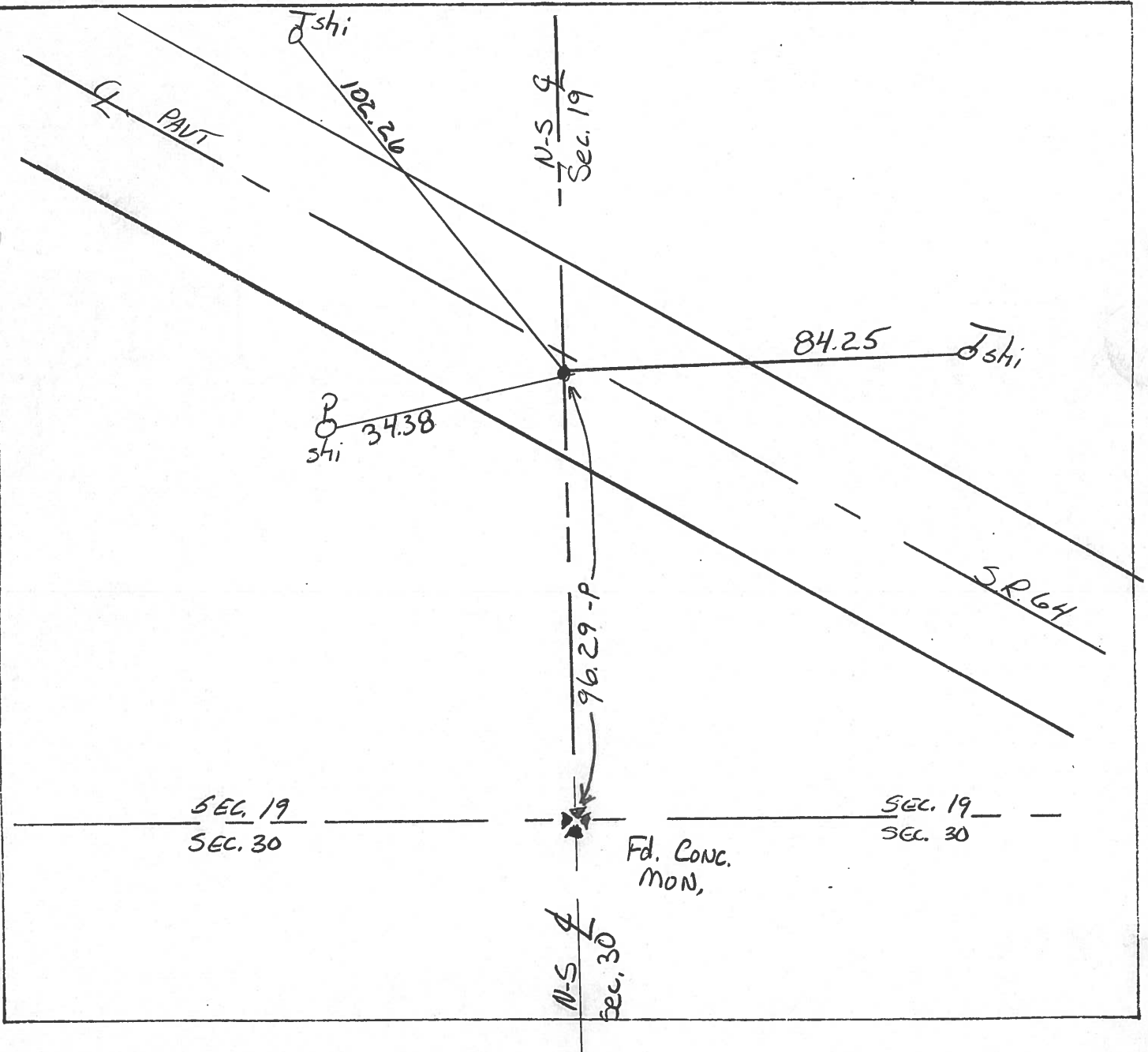
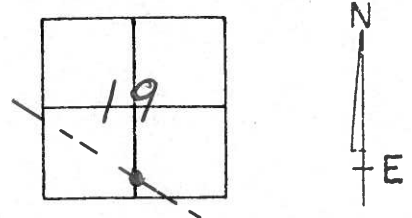
TYPE MONUMENT Sm. R.R. Spike

ON SURFACE - BELOW YES

LEFT- & PAV'T. - RIGHT

TO EDGE PAVEMENT

S.L.M. 115+22



County LUCAS S.R. 64

Date 5-21-81

Township WATERVILLE

Weather clear

Section 19

Temp. 75°

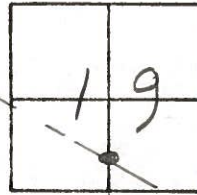
T6N, R6E

Personnel S. Hoffmann

C. Luhrke

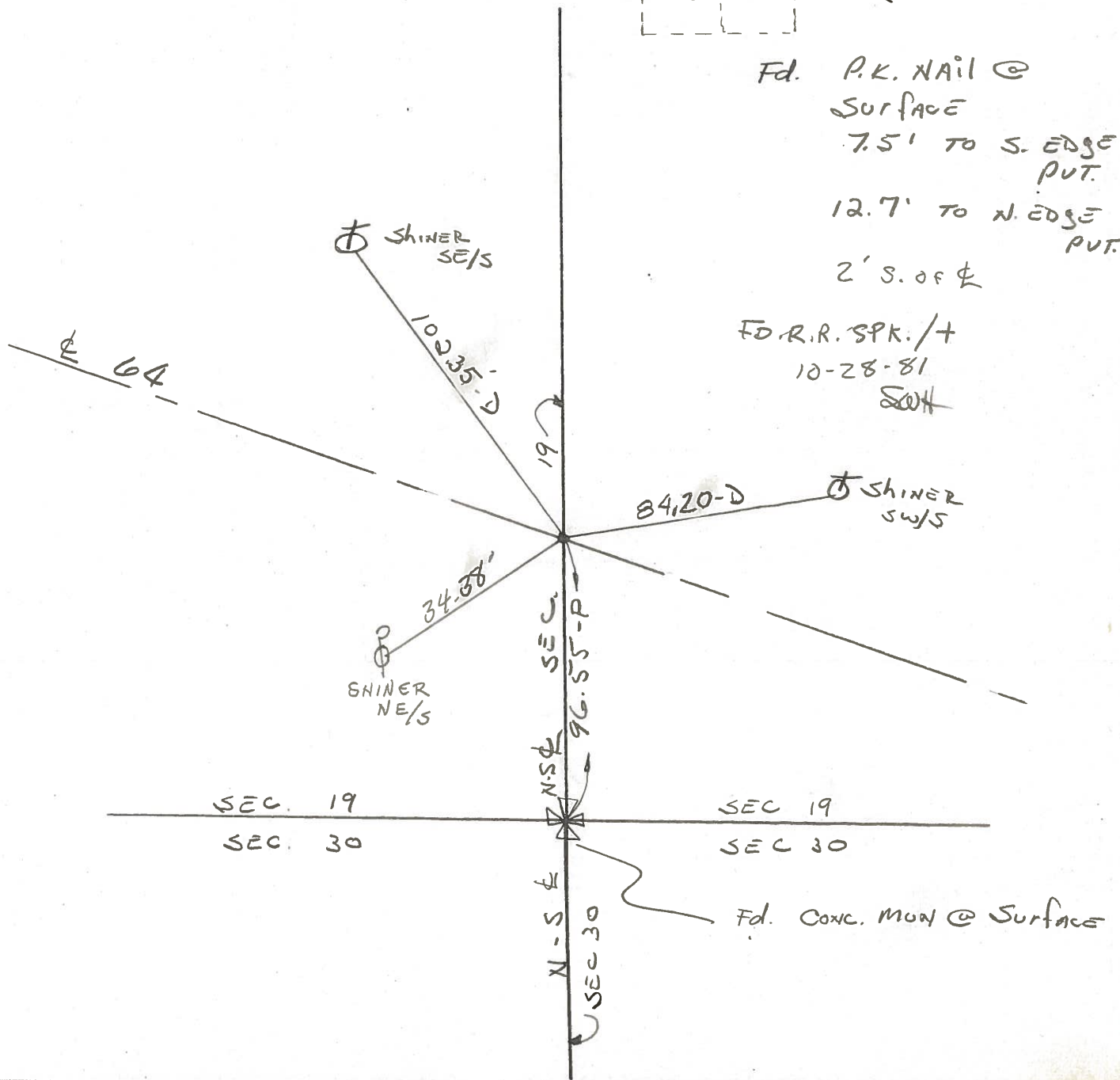
J. Householder

#14



Fd. P.K. NAIL @
 SURFACE
 7.5' TO S. EDGE
 PVT.
 12.7' TO N. EDGE
 PVT.
 2' S. OF ♯

FD. R.R. SPR. /+
 10-28-81
 SWH



PERSONNEL	TITLE	PERSONNEL	TITLE
Stone			
E			
Crew			

COUNTY Lucas DATE 29 March 77

S. R. CF WEATHER Windy

SEC. Waterville to Whitehouse TEMP. 62°

DESCRIPTION References to Control Points LEFT CENTER LINE RIGHT JOB NO.

