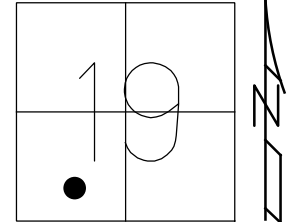


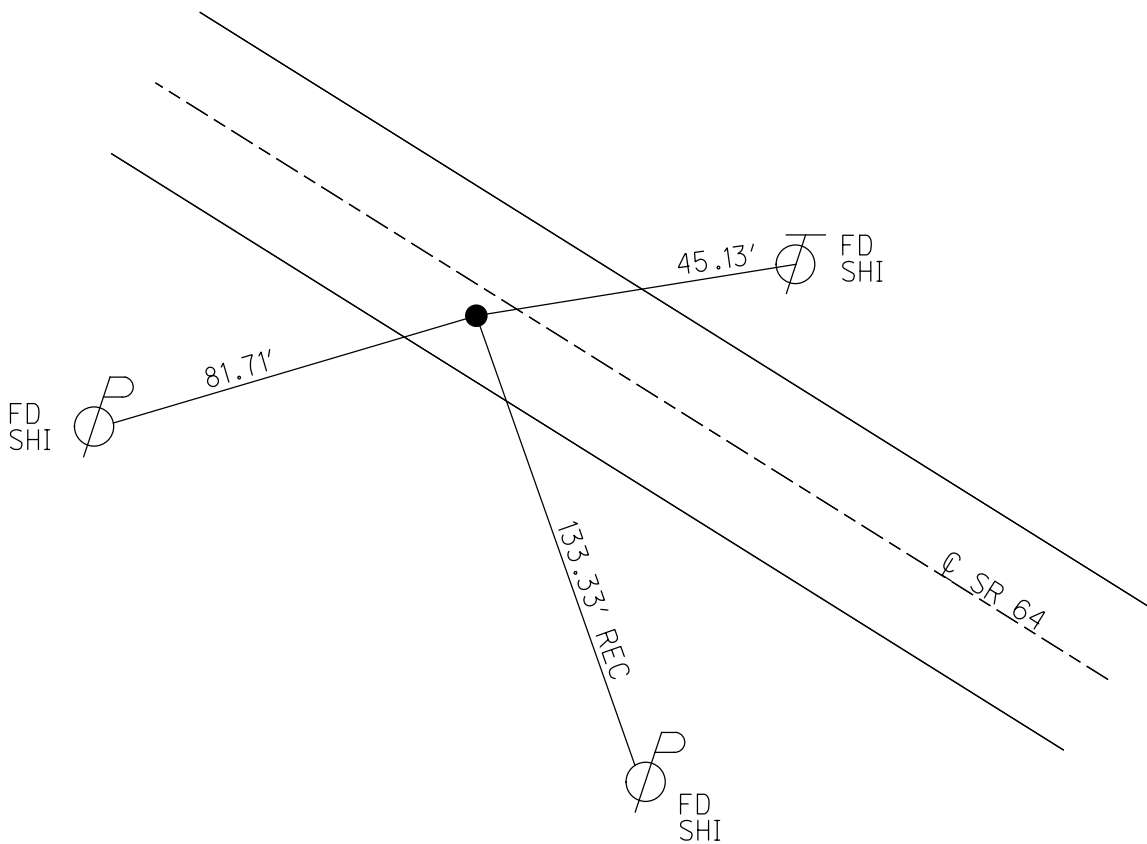
O.D.O.T. DISTRICT 2 SURVEY OFFICE (USE ONLY)

PERSONNEL _____ REFERENCE NO. 15 SHEET 2 OF 56
 NOTES ROUSOS DATE _____ ROUTE SR 64
 H.C. HOMAN WEATHER CLOUDY COUNTY LUCAS
 R.C. MICHALAK TEMP. 48° TOWNSHIP WATERVILLE
 _____ SECTION 19
 _____ T 6 N R 10 E

TYPE MONUMENT P.K.NAIL/WASHER
 ON SURFACE - ~~BELOW~~ ON _____
 LEFT - ☉ PAV'T - ~~RIGHT~~ 1.9'
8.1' TO LT EDGE PAVEMENT
 S.L.M. 116+19.71
 Grid: Northing: _____ Easting: _____



RECORD: P.I.
 STA. 121+78
 $\Delta = 0^\circ 39' 30''$ LT
 SET P.K.NAIL/WASHER
 8-07-02, DCH
 DNF
 1-4-16, JFO



O.D.O.T. DISTRICT 2 SURVEY OFFICE

PERSONNEL

NOTES _____ ROUSOS _____
 H.C. _____ HOMAN _____
 R.C. _____ MICHALAK _____

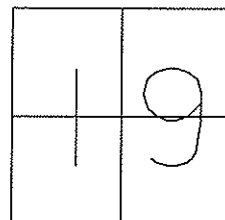
REFERENCE NO. 15

DATE 5-20-02
 WEATHER CLOUDY
 TEMP. 48

SHEET 17 OF 47

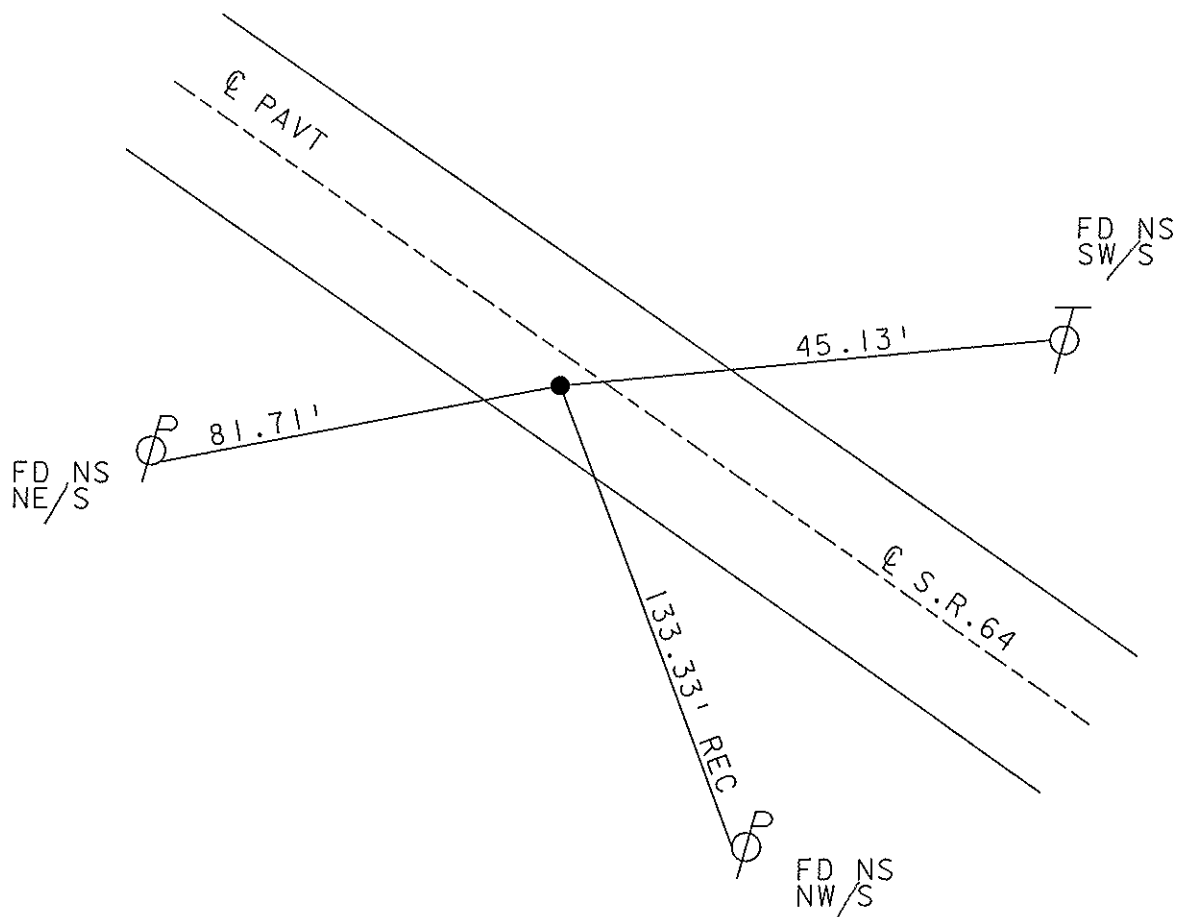
ROUTE S.R. 64
 COUNTY LUCAS
 TOWNSHIP WATERVILLE
 SECTION 19
T 6 N R 5 E

TYPE MONUMENT PK NAIL & WASHER
 ON SURFACE - ~~BELOW~~ _____ ON _____
 LEFT - Q PAV'T - ~~RIGHT~~ _____ 1.9' _____
8.1' TO LT EDGE PAVEMENT
 S.L.M. _____ 121+78 _____



RECORD P.I.
 $\Delta = 0^\circ 39' 30''$ LT

SET PK NAIL
 & WASHER
 8-07-02
 DCH



O.D.O.T. DISTRICT 2 SURVEY OFFICE

PERSONNEL

REFERENCE NO. 15

SHEET 17 OF 49

NOTES LOEHRKE

H.C. STONE

R.C. CURTIS

DATE 8-12-91

WEATHER Clear

TEMP. +75

ROUTE S.R. 64

COUNTY LUCAS

TOWNSHIP WATERVILLE

SECTION 19

T 6 N R 5 E

TYPE MONUMENT Sm. R.R. Spike

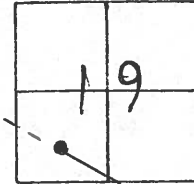
Set P.K. Nard
3-4-92

ON SURFACE - ~~BELOW~~ Yes

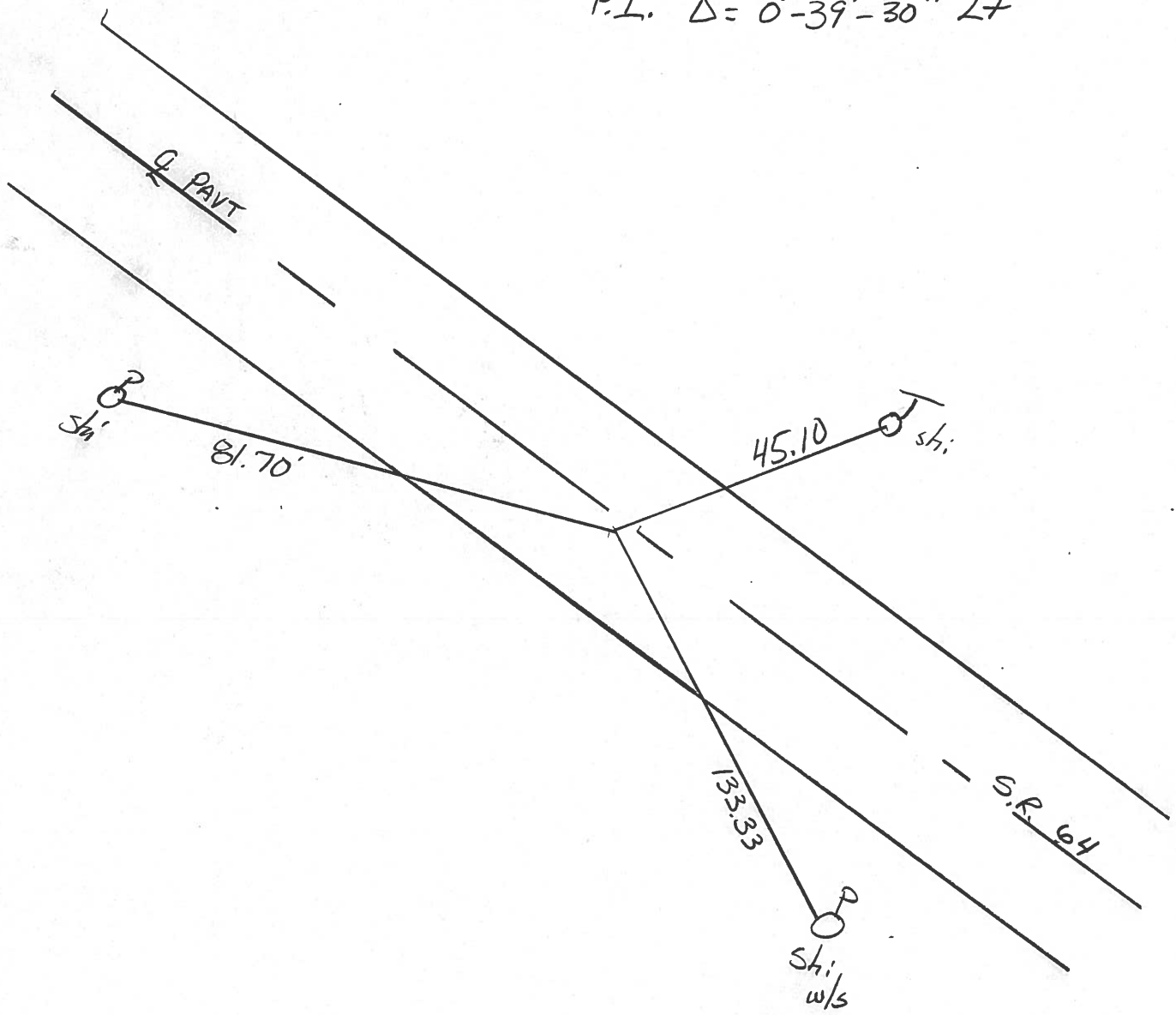
LEFT- & PAV'T. - ~~RIGHT~~ 1.9 Lt

B.I TO Lt. EDGE PAVEMENT

S.L.M. 122+48



P.I. $\Delta = 0^{\circ} - 39' - 30''$ Lt



County LUCAS S.R. 64

Date 5-21-81

Township WATERVILLE

Weather clear

Section 19

Temp. 77°

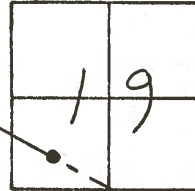
T&N, RSE

Personnel S. Hoffmann

C. Loehrke

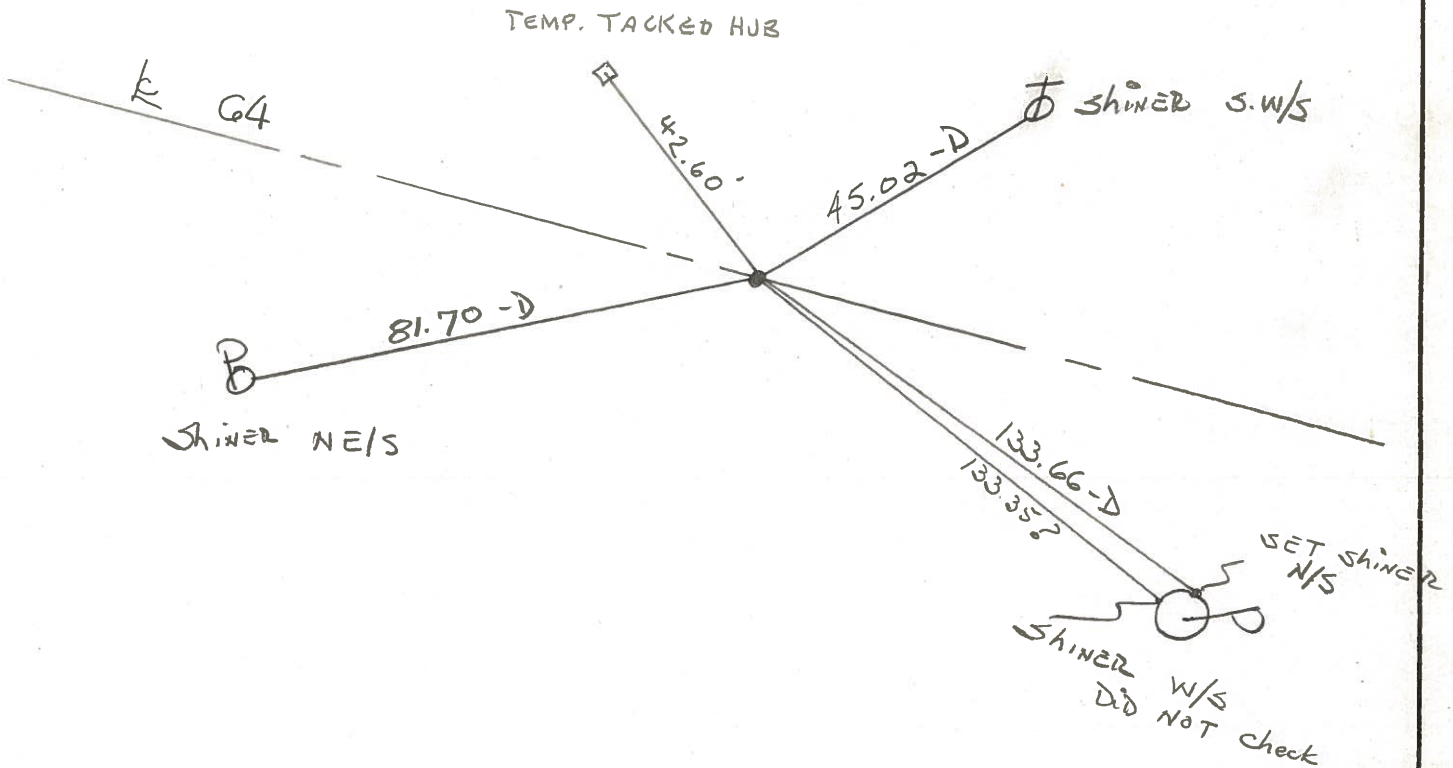
J. Householder

#15



SET 2" SPK/WASHER
 10-28-81
 SWH

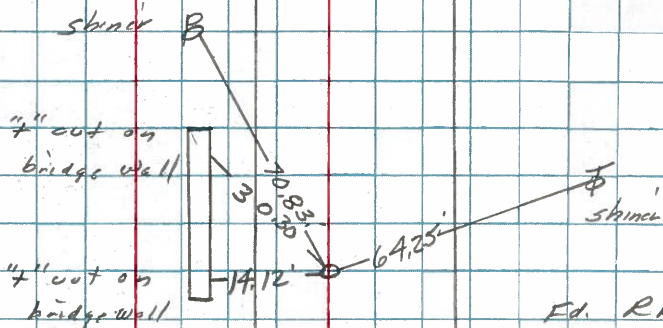
Fd. SMALL R.R. SPK @
 SURFACE
 12.0' TO N. EDGE PVT.
 8.2' TO S. EDGE PVT.
 $\Delta = 00-39' -30''$ LT. (REG)
 2' S. OF Δ



PERSONNEL Staple TITLE _____ PERSONNEL _____ TITLE _____ COUNTY Lucas DATE 29 March 77
 & _____ S. R. 64 WEATHER Windy
 Crew _____ SEC. Waterville to Whitehse TEMP. 70°

DESCRIPTION References to Control Points JOB NO. _____
 LEFT CENTER LINE RIGHT

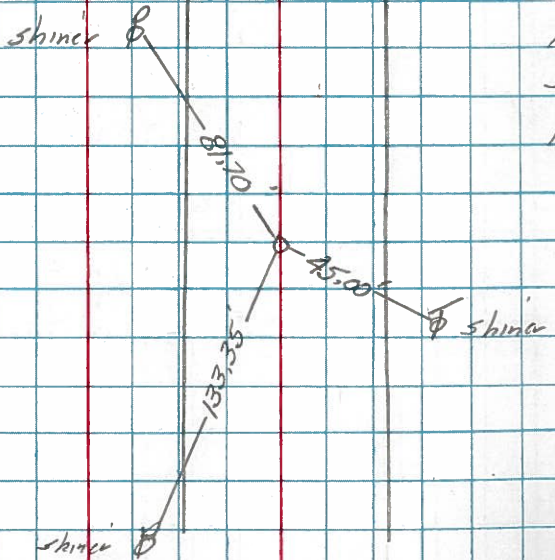
(16)



Ed. RR Spk. to surface
 Set by others
 12.8' to N. edge pt.
 7.4' to S. edge pt.
 $\Delta = 0^{\circ} 34' \text{ Rt. (Rec.)}$

SR #69

(17)



$\Delta = 0^{\circ} 39' 30'' \text{ Lt (Rec.)}$
 Ed. RR Spk. to Surface
 Set by others
 12.0' to N. edge pt.
 8.2' to S. edge pt.

PERSONNEL TITLE PERSONNEL TITLE

COUNTY Lucas DATE July 30, 1968

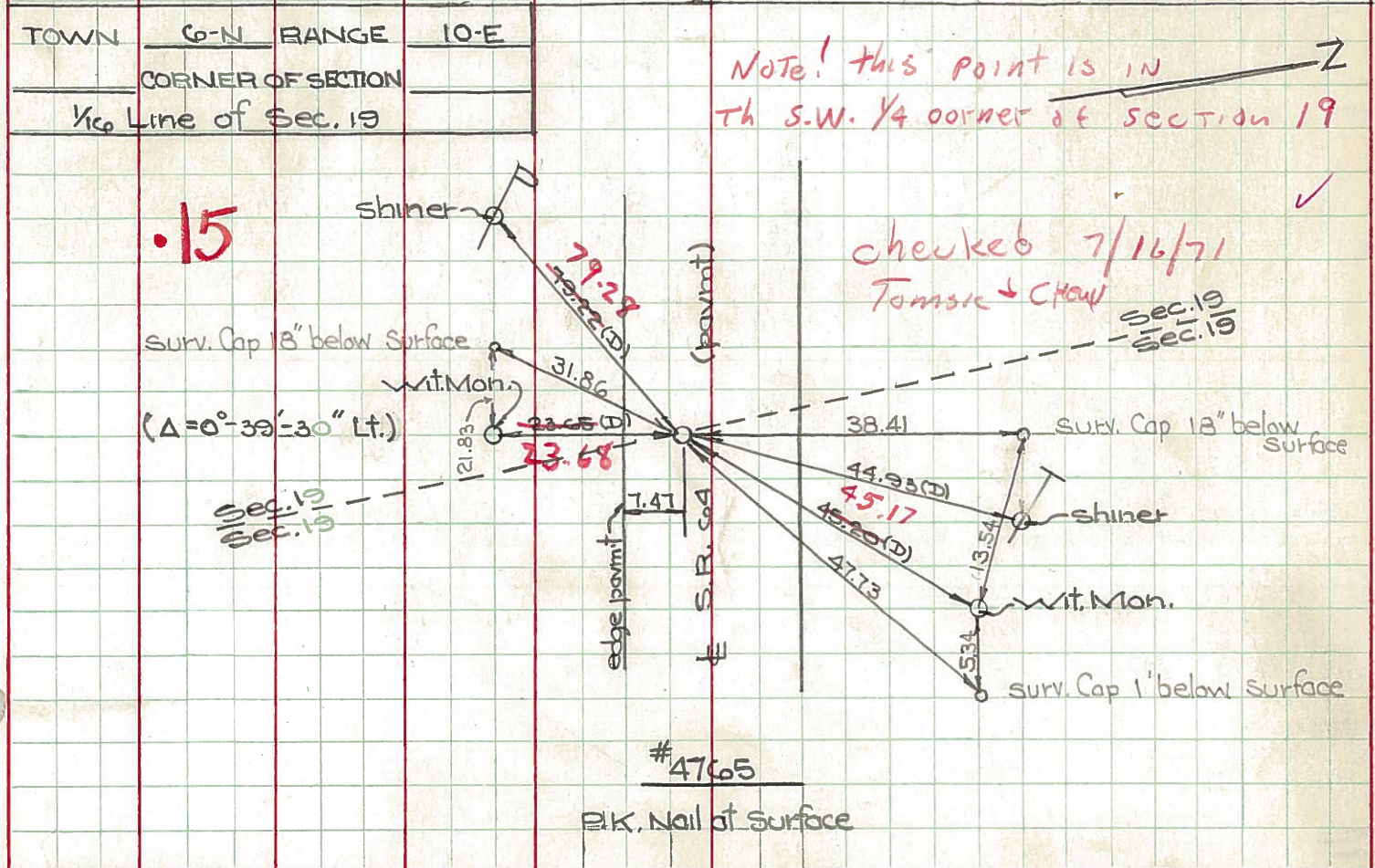
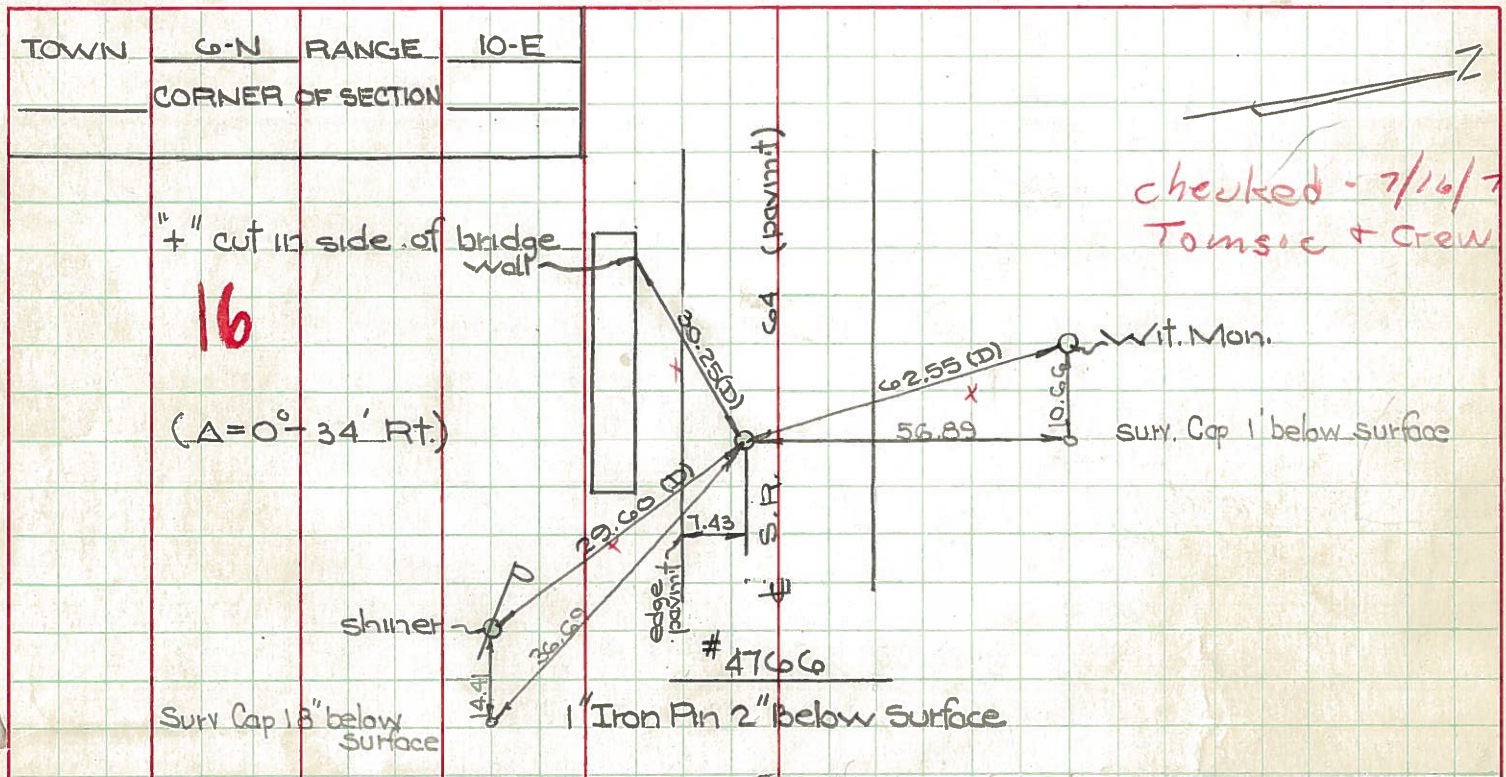
D. Curtis
J. Teal

S. R. Co4 WEATHER mild

SEC. TEMP. 70°±

DESCRIPTION S.R. Co4 - Ref. Mon. & Control Points JOB NO. 02994(0)

LEFT CENTER LINE RIGHT



PERSONNEL TITLE PERSONNEL TITLE

COUNTY Lucas DATE 24 Feb. 66

Stone

Beck

Brindley

Schroeder

S. R. #64

WEATHER Damp

SEC. Waterville - W.

TEMP. 30°

DESCRIPTION

LEFT

CENTER LINE

RIGHT

JOB NO.

Refs. To Control Pts.

DESCRIPTION	LEFT	CENTER LINE	RIGHT	JOB NO.
11 #225	E. Line Sec. 30	35.13'	N.W. To Cor. Ref. Mon. (D)	
	Fd. 1" I. Pin 2" Below Surface	37.68'	N.W. To Shiner in P.P. (D)	
	$\Delta = 0^\circ 40' \text{ Lt.}$	78.19'	N.N.W. To Shiner in 15" Tree (D)	
	Sta. 81+08.86	95.90	N. To S.E. Cor. Edn. To House (D)	
12 #224	N&S \pm Sec. 19	48.18'	N.W. To Con. Wit. Mon. (D)	
	Sta. 109+98.31	50.47'	N.E. To Con. Wit. Mon. (D)	
	$\Delta = 0^\circ 25' \text{ Rt.}$	29.84'	S.E. To Con. Wit. Mon. (D)	
	Fd. 1" I. Pin 2" Below Surface			
15 #223	$\frac{1}{2}$ Cor. Sec. 19	45.18'	N.E. To Con. Wit. Mon. (D)	
	Sta. 122+50.59	79.29'	S.W. To Shiner in P.P. (D)	
	$\Delta = 0^\circ 29' 30" \text{ Lt.}$	23.64'	S. To Con. Wit. Mon. (D)	
	Fd. 1" I. Pin 2" Below Surface	44.94'	N.E. To Shiner in T.P. (D)	
16	Sta. 138+30.95	62.82'	N.N.W. To Con. Wit. Mon. (D)	
	$\Delta = 0^\circ 34' \text{ Rt.}$	29.65'	S.S.E. To Shiner in P.P. (D)	
	Fd. 1" I. Pin 2" Below Surface	30.23'	S.W. To S.W. Cor. Bridge Wall (D)	
17 #220	W. Line Sec. 19	64.49'	N.E. To Shiner in T.P. (D)	
	Sta. 142+55.22	105.25'	N.W. To Shiner in T.P. (D)	
	$\Delta = 0^\circ 44' 15" \text{ Lt.}$	95.54'	W.S.W. To Shiner in P.P. (D)	
	Fd. 1" I. Pin 2" Below Surface			
18 #219	Int. Nward Rd	41.00'	N. To Con. Wit. Mon. (D)	
	E. Line Sec. 1	51.82'	S.E. To "t" in Lu. Co. B.M. (D)	
	Sta. 157+30.77	33.70'	S.W. To Con. Wit. Mon. (D)	
	$\Delta = 0^\circ 08' 30" \text{ Rt.}$ Fd. 1" I. Pin 2" Below Surface			