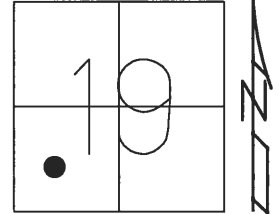


O.D.O.T. DISTRICT 2 SURVEY OFFICE (USE ONLY)

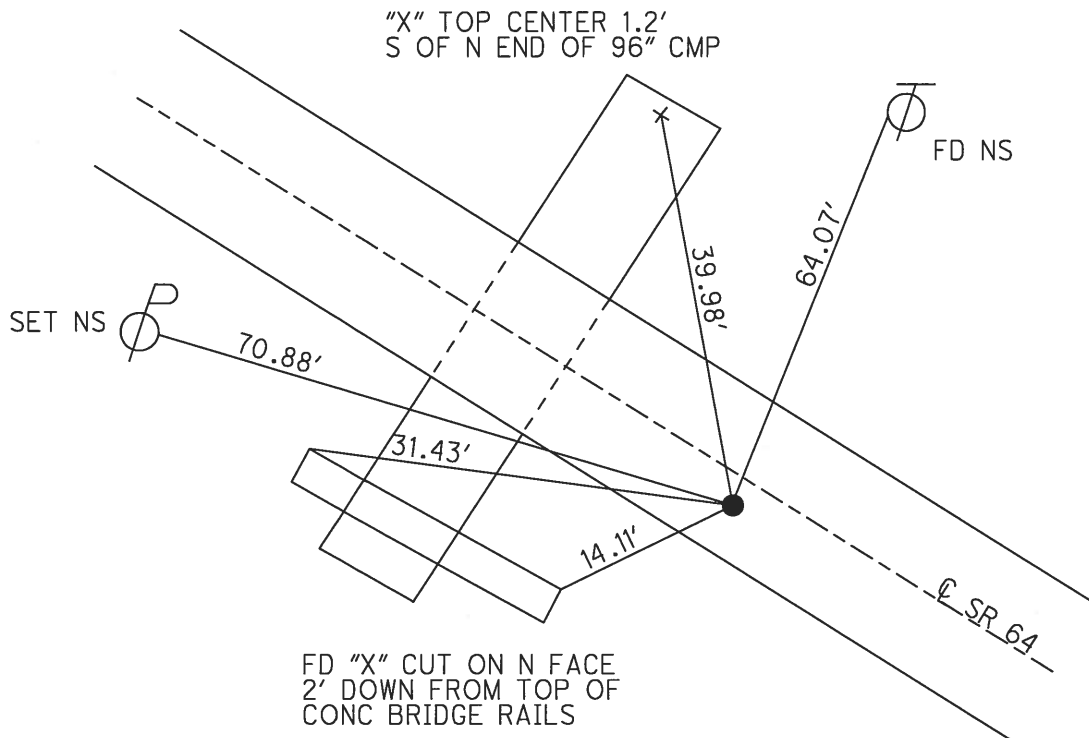
PERSONNEL _____ REFERENCE NO. 16 SHEET 3 OF 50
 NOTES ROUSOS DATE 5-20-02 ROUTE SR 64
 H.C. HOMAN WEATHER CLOUDY COUNTY LUCAS
 R.C. MICHALAK TEMP. 48° TOWNSHIP WATERVILLE
 _____ SECTION 19
 _____ T 6 N R 10 E

TYPE MONUMENT P.K.WASHER
 ON SURFACE - ~~BELOW~~ ON _____
 LEFT - ☉ PAV'T - ~~RIGHT~~ 2.5'
7' TO LT EDGE PAVEMENT
 S.L.M. 127+25.52



Grid: Northing: 673737.8568 Easting: 1624314.3890

RECORD:
 P.I. Δ = 0° 34' 00" LT
 SET P.K.NAIL/WASHER
 8-07-02, DCH
 FD MON BOX WITH
 1" IPIN REF16
 1-15-16, JFO



FD "X" CUT ON N FACE
 2' DOWN FROM TOP OF
 CONC BRIDGE RAILS

O.D.O.T. DISTRICT 2 SURVEY OFFICE

PERSONNEL

REFERENCE NO. 16

SHEET 18 OF 47

NOTES ROUSOS

DATE 5-20-02

ROUTE S.R. 64

H.C. HOMAN

WEATHER CLOUDY

COUNTY LUCAS

R.C. MICHALAK

TEMP. 48

TOWNSHIP WATERVILLE

SECTION 19

T 6 N R 5 E

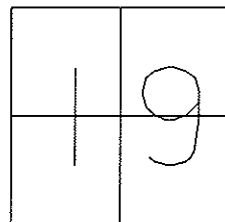
TYPE MONUMENT PK NAIL & WASHER

ON SURFACE - ~~BELOW~~ ON

LEFT - ~~Q~~ PAVT - ~~RIGHT~~ 2.5'

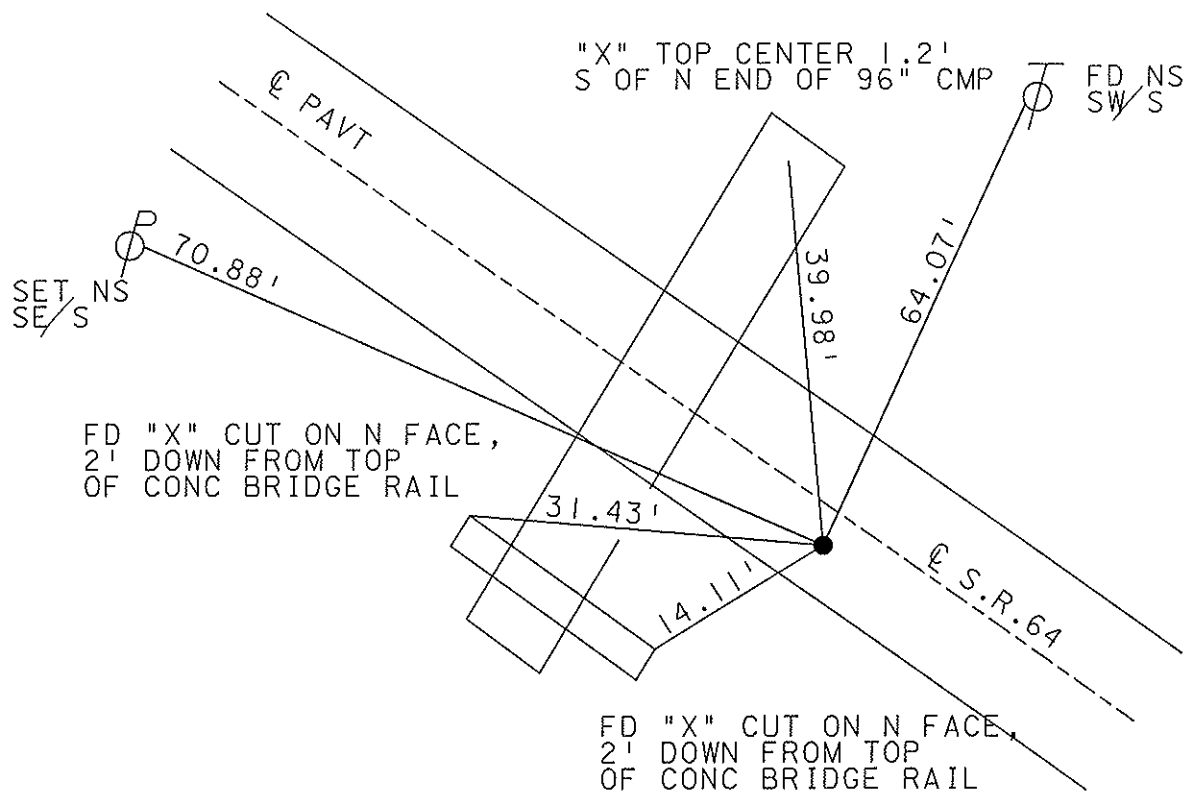
7' TO LT EDGE PAVEMENT

S.L.M. 127+58



RECORD P.I.
 $\Delta = 0^\circ 34' 00''$ RT

SET MAG NAIL
& WASHER
12-11-02
DCH



O.D.O.T. DISTRICT 2 SURVEY OFFICE

PERSONNEL

REFERENCE NO. 16

SHEET 18 OF 49

NOTES LOEHRKE

H.C. STONE

R.C. CURTIS

DATE 8-12-91

WEATHER CLEAR

TEMP. +80

ROUTE S.R. 64

COUNTY LUCAS

TOWNSHIP WATERVILLE

SECTION 19

T. 6 N R. 5 E

TYPE MONUMENT Sm. R.R. Spike Set P.K. Nail

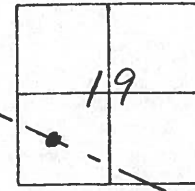
ON SURFACE - ~~BELOW~~ Yes

LEFT - 0 PAV'T. - RIGHT 2.5

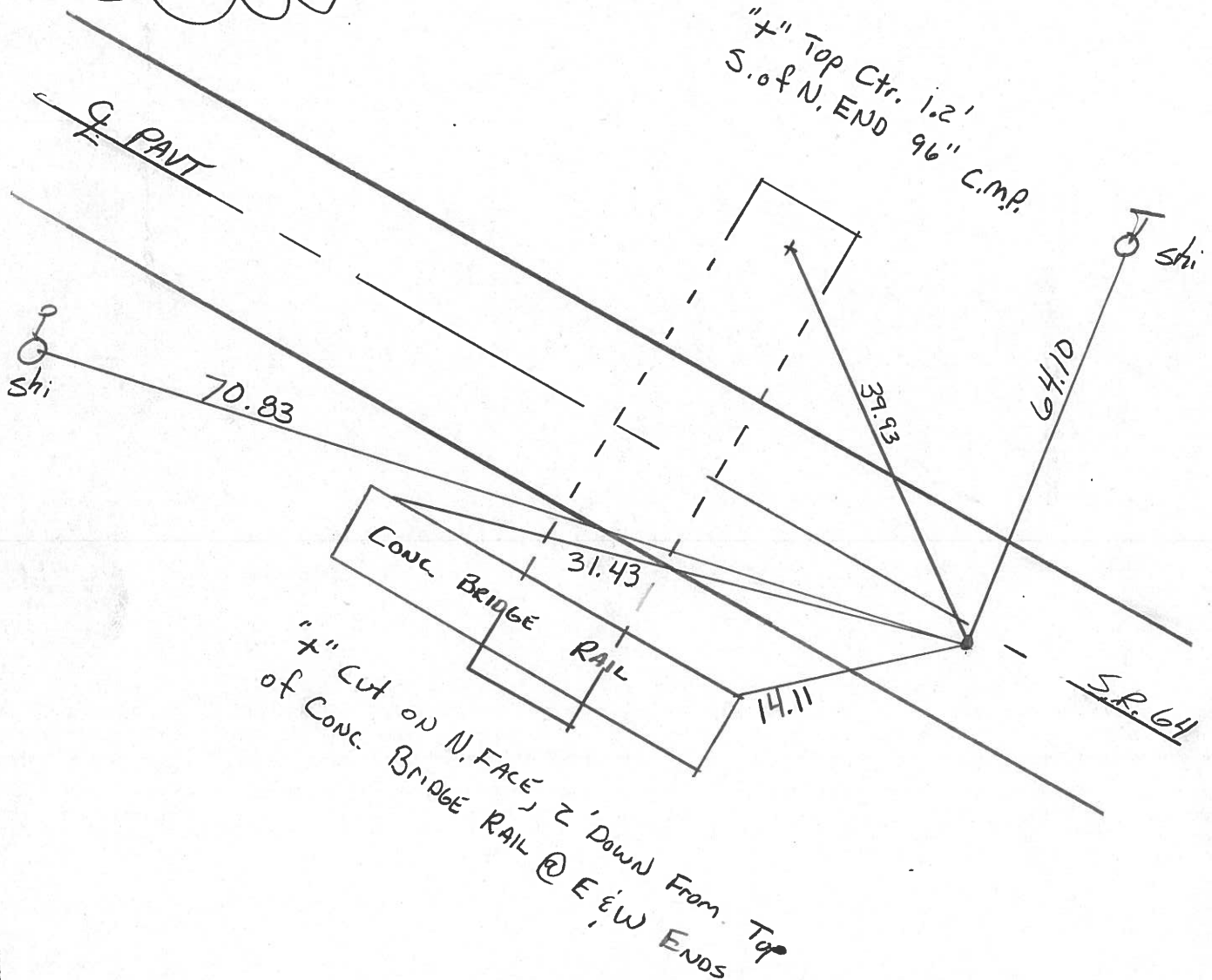
7.2 TO L EDGE PAVEMENT

S.L.M. 128+28

3-4-92



P.I. $\Delta = 0^{\circ} 34' Rt.$



County LUCAS S.R. 64

Date 5-21-81

Township WATERVILLE

Weather Clear

Section 19

Temp. 77°

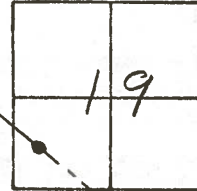
T6N, R5E

Personnel S. Hoffman

C. Loehrke

J. Householder

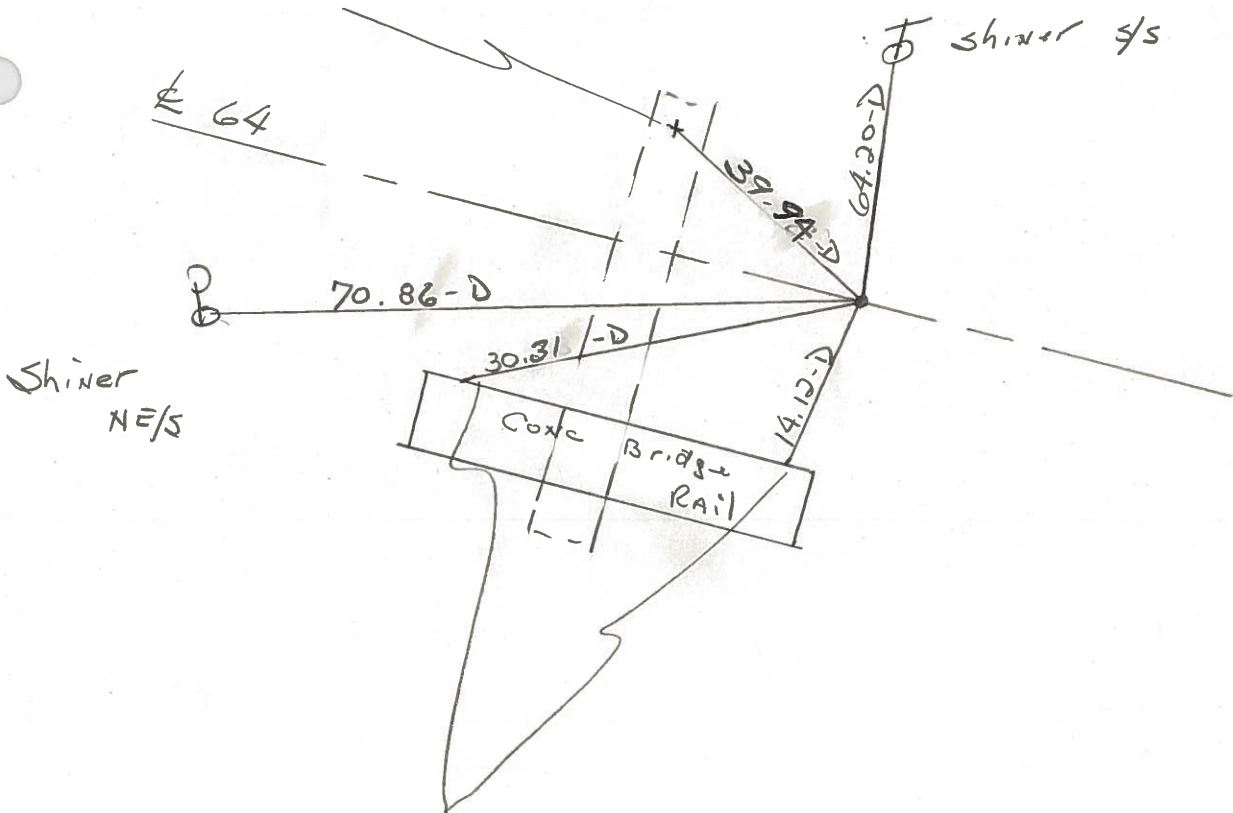
16



FD. R.R. SPK.
10-28-81
SWN

Fd R.R. Spk @ SURFACE
12.8' to N. edge put.
7.4' to S. edge put.
 $\Delta = 0^\circ - 34' RT (Rec.)$

"+" CUT TOP, CTR, 1.2' S. of N. END
of 96" CMP



"+" CUT ON N. FACE, 2' DOWN FROM TOP of
CONC. RAIL @ W & E ENDS

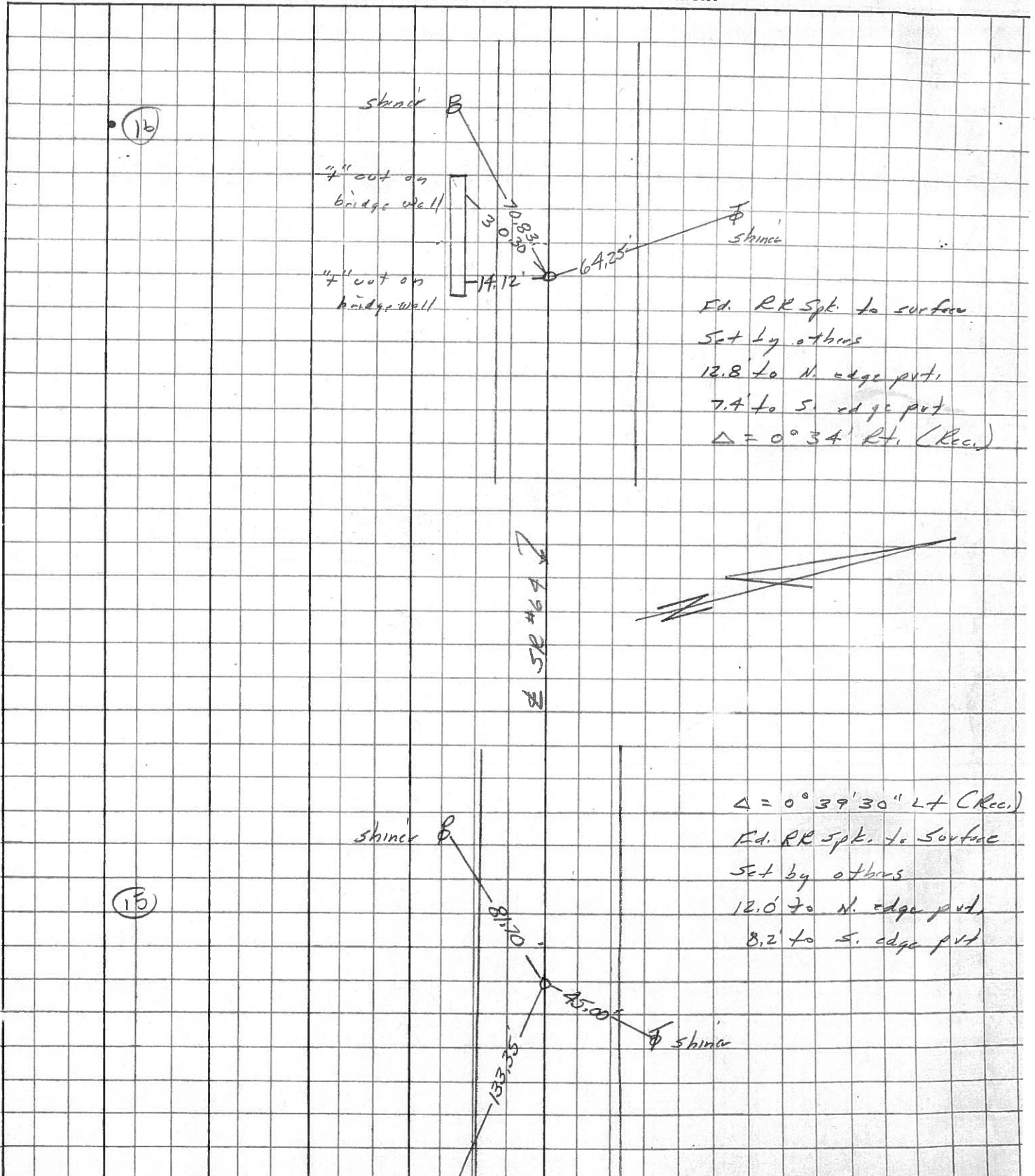
PERSONNEL	TITLE	PERSONNEL	TITLE
<u>Stape</u>			
<u>Crew</u>			

COUNTY Lucas DATE 29 March 7

S. R. 64 WEATHER Windy

SEC. Waterville to Whitehse TEMP. 70°

DESCRIPTION References to Control Points JOB NO. _____



Ed. RR Spt. to surface
 Set by others
 12.8 to N. edge pt.
 7.4 to S. edge pt.
 $\Delta = 0^\circ 34' \text{ Rt. (Rec.)}$

$\Delta = 0^\circ 39' 30" \text{ Lt (Rec.)}$
 Ed. RR Spt. to surface
 Set by others
 12.0 to N. edge pt.
 8.2 to S. edge pt.

(16)

(15)

PERSONNEL TITLE PERSONNEL TITLE

COUNTY Lucas DATE July 30, 1968

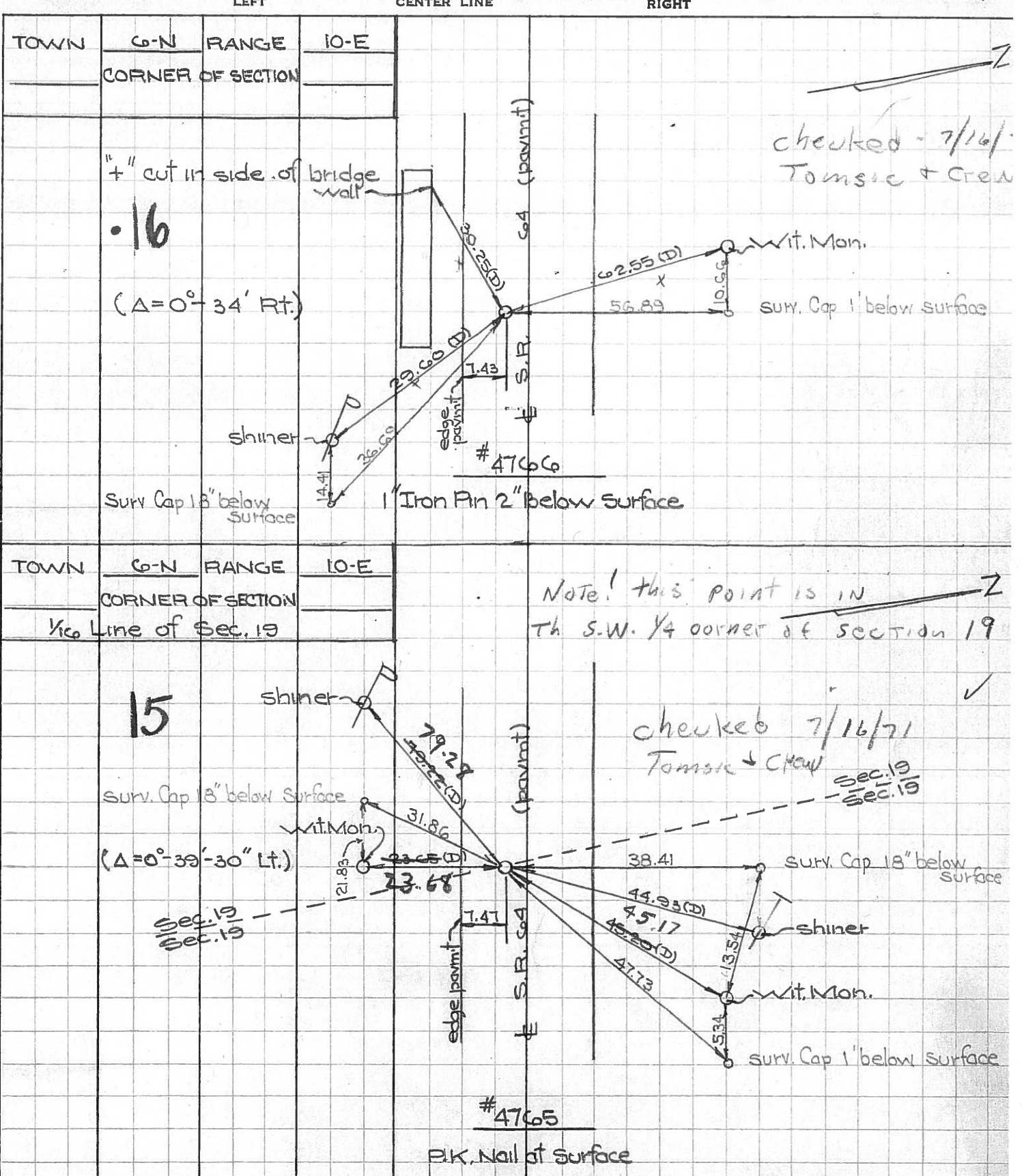
D. Curtis
J. Teal

S. R. Co4 WEATHER mild

SEC. TEMP. 70°±

DESCRIPTION S.R. Co4 - Ref. Mon. & Control Points

JOB NO. 02994(0)



PERSONNEL TITLE PERSONNEL TITLE

COUNTY Lucas DATE 24 Feb. 66

Stone

Beck

Brindley

Schroeder

S. R. #64

WEATHER Damp

SEC. Waterville - W.

TEMP. 30°

DESCRIPTION

Refs. To Control Pts.

JOB NO.

LEFT

CENTER LINE

RIGHT

	LEFT	CENTER LINE	RIGHT
11 #225	E. Line Sec. 30	35.13'	N.W. To Cor. Ref. Mon. (D)
	Fd. 1" I. Pin 2" Below Surface	37.68'	N.W. To Shiner in P.P. (D)
	$\Delta = 0^\circ 40' \text{ Lt.}$	78.19'	N.N.W. To Shiner in 15" Tree (D)
	Sta. 81+08.86	95.90	N. To S.E. Cor. Fdn. To House (D)
12 #224	N&S \pm Sec. 19	48.18'	N.W. To Con. Wit. Mon. (D)
	Sta. 109+98.31	50.47'	N.E. To Con. Wit. Mon. (D)
	$\Delta = 0^\circ 25' \text{ Rt.}$	29.84'	S.E. To Con. Wit. Mon. (D)
	Fd. 1" I. Pin 2" Below Surface		
15 #223	$\frac{1}{2}$ Cor. Sec. 19	45.18'	N.E. To Con. Wit. Mon. (D)
	Sta. 122+50.59	79.29'	S.W. To Shiner in P.P. (D)
	$\Delta = 0^\circ 39' 30" \text{ Lt.}$	23.64'	S. To Con. Wit. Mon. (D)
	Fd. 1" I. Pin 2" Below Surface	44.94'	N.E. To Shiner in T.P. (D)
16	Sta. 138+30.95	62.82'	N.N.W. To Con. Wit. Mon. (D)
	$\Delta = 0^\circ 34' \text{ Rt.}$	29.65'	S.S.E. To Shiner in P.P. (D)
	Fd. 1" I. Pin 2" Below Surface	30.23'	S.W. To S.W. Cor. Bridge Wall (D)
17 #220	W. Line Sec. 19	64.49'	N.E. To Shiner in T.P. (D)
	Sta. 142+55.22	105.25'	N.W. To Shiner in T.P. (D)
	$\Delta = 0^\circ 44' 15" \text{ Lt.}$	95.54'	W.S.W. To Shiner in P.P. (D)
	Fd. 1" I. Pin 2" Below Surface		
18 #219	Int. Nward Rd	41.00'	N. To Con. Wit. Mon. (D)
	E. Line Sec. 1	51.82'	S.E. To "t" in Lu. Co. B.M. (D)
	Sta. 157+30.77	33.70'	S.W. To Con. Wit. Mon. (D)
	$\Delta = 0^\circ 08' 30" \text{ Rt.}$ Fd. 1" I. Pin 2" Below Surface		