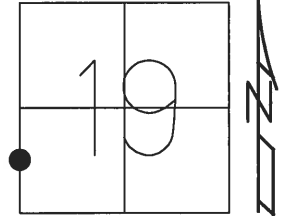


O.D.O.T. DISTRICT 2 SURVEY OFFICE (USE ONLY)

PERSONNEL \_\_\_\_\_ REFERENCE NO. 17 SHEET 4 OF 50

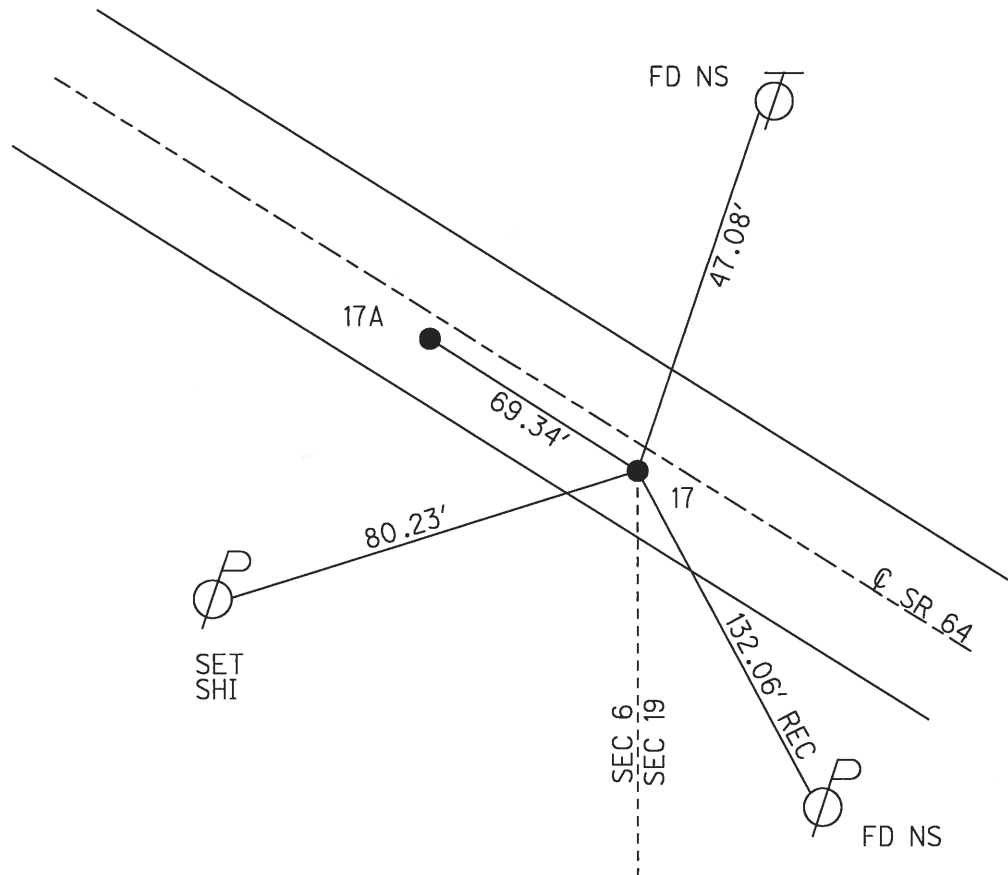
NOTES RHOADES DATE 4-20-18 ROUTE SR 64  
 H.C. O'DONNELL WEATHER SUNNY COUNTY LUCAS  
 R.C. SEAMAN TEMP. 40° TOWNSHIP WATERVILLE  
 SECTION 19  
 T 6 N R 10 E

TYPE MONUMENT MAG/WASHER  
 ON SURFACE - ~~BELOW~~ ON \_\_\_\_\_  
 LEFT - ~~C PAV'T~~ - RIGHT 2.0'  
7.9' TO LT EDGE PAVEMENT  
 S.L.M. 140+80



Grid: Northing: 674228.7828 Easting: 1623051.8983

RECORD:  
 SET P.K.NAIL/WASHER  
 8-07-02, DCH  
 REF17  
 FND P.K./WASHER  
 1-15-16, JFO  
 SET MAG/WASHER  
 4-20-18, JFO



O.D.O.T. DISTRICT 2 SURVEY OFFICE

PERSONNEL

REFERENCE NO. 17

SHEET 19 OF 47

NOTES ROUSOS

DATE 5-20-02

ROUTE S.R. 64

H.C. HOMAN

WEATHER CLOUDY

COUNTY LUCAS

R.C. MICHALAK

TEMP. 48

TOWNSHIP WATERVILLE

SECTION 19

T 6 N R 5 E

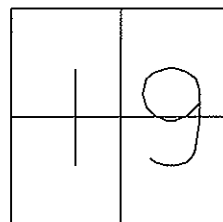
TYPE MONUMENT PK NAIL & WASHER

ON SURFACE - ~~BELOW~~ ON

LEFT - ~~Q PAVT - RIGHT~~ 2.0'

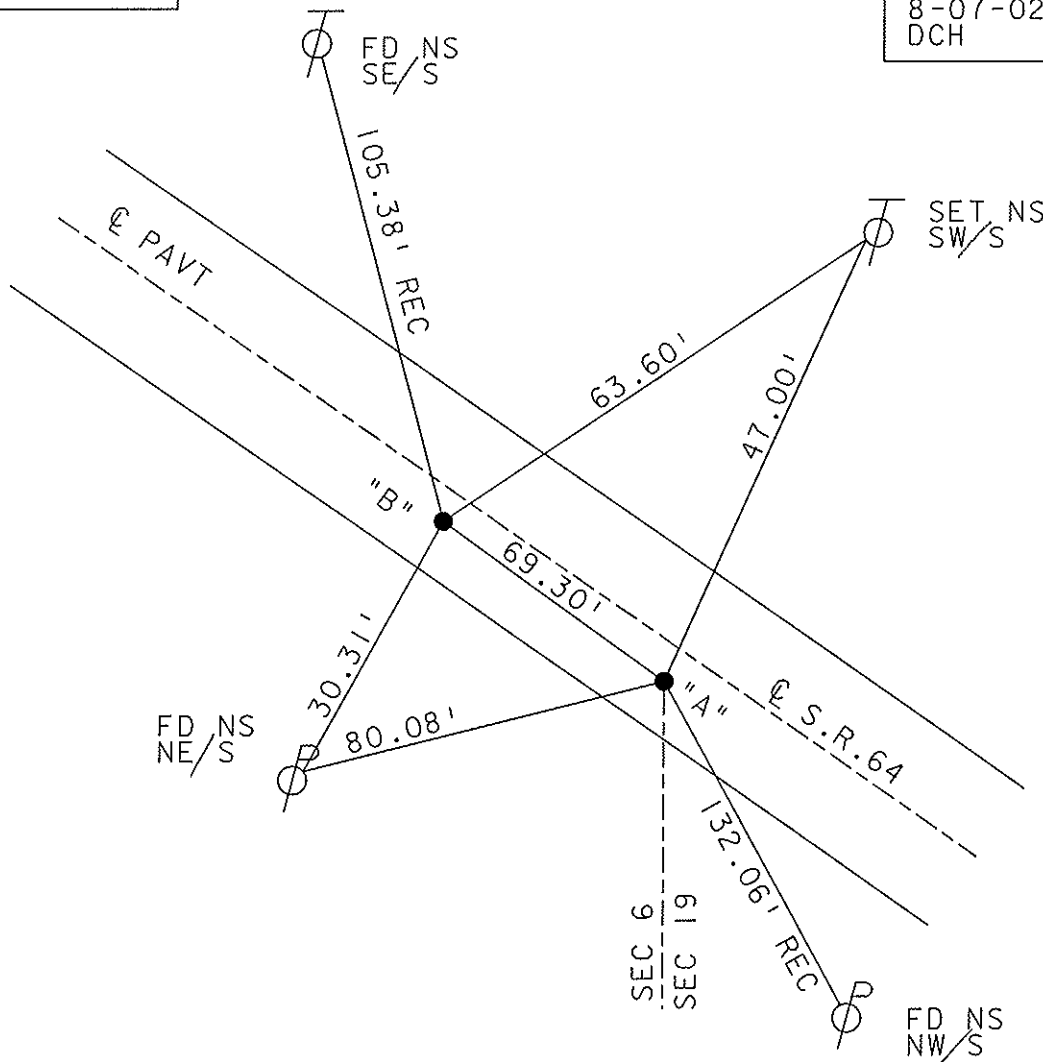
7.9' TO LT EDGE PAVEMENT

S.L.M. A=141+13 B=141+82



RECORD P.I. "B"  
 $\Delta = 0^\circ 44' 15''$  LT

SET PK NAIL'S  
 & WASHER'S  
 8-07-02  
 DCH



O.D.O.T. DISTRICT 2 SURVEY OFFICE

PERSONNEL

REFERENCE NO. 17

SHEET 19 OF 49

NOTES LOEHRKE

H.C. STONE

R.C. CURTIS

DATE 8-12-91

WEATHER CLEAR

TEMP. +75

ROUTE S.R. 64

COUNTY LUCAS

TOWNSHIP WATERVILLE

SECTION 19

T. 6 N R. 5 E

TYPE MONUMENT Sm. R.R. Spikes

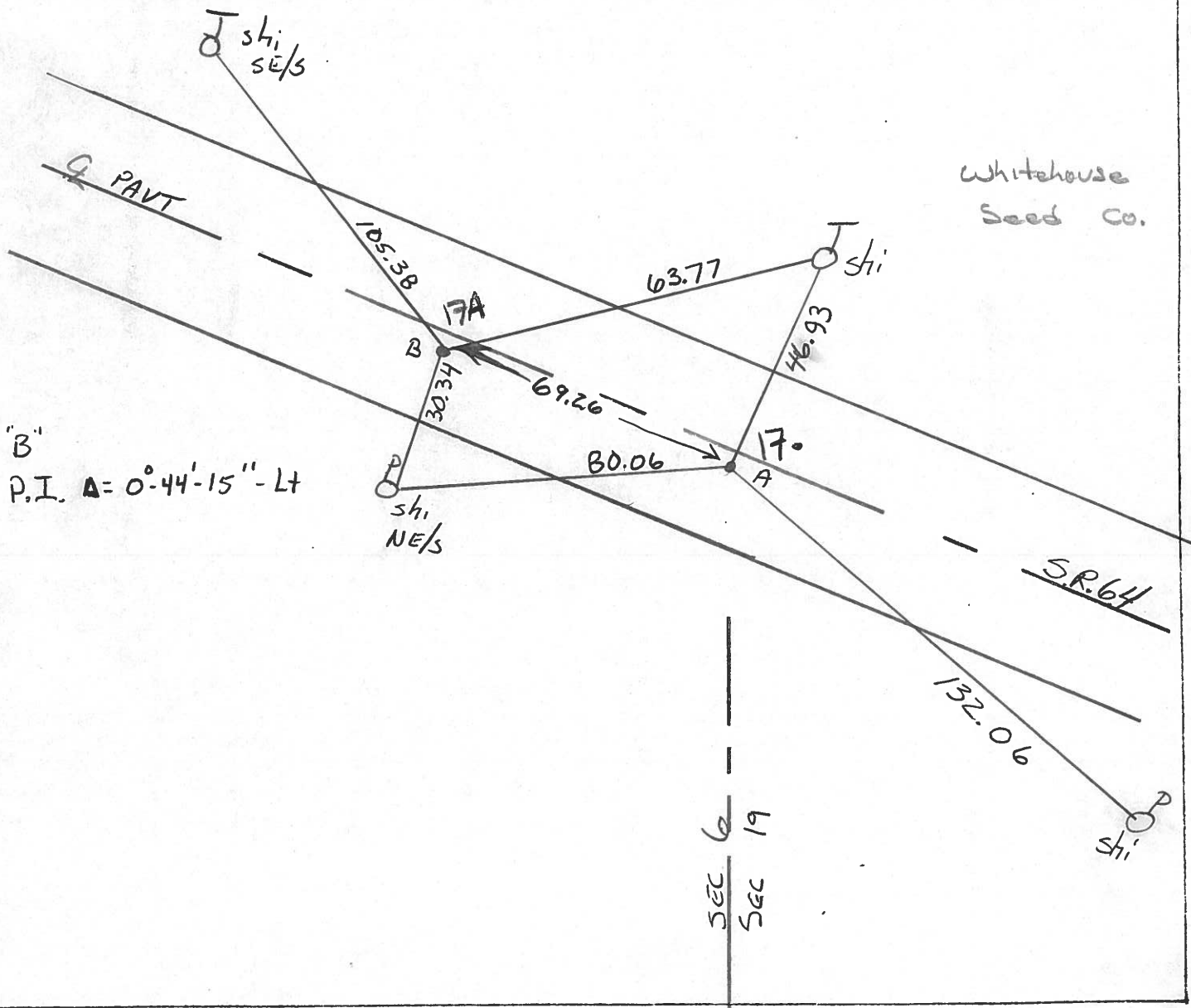
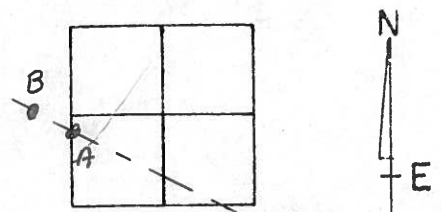
Set P.K. Nails  
3-4-92

ON SURFACE - BELOW Yes

LEFT- & PAV'T. - RIGHT 2.0

7.9 TO Lt EDGE PAVEMENT

S.L.M. A = 141 + 83      B = 142 + 52



County LUCAS S.R. 64

Date 5-21-81

Township WATERVILLE

Weather clear

Section 19

Temp. 77°

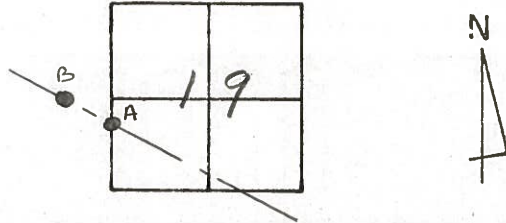
T6N, R5E

Personnel S. HOFFMAN

C. Loehrke

L. Householder

#17



A - FD. R.R. SPK/+

B - FD. R.R. SPK/+

10-28-81

SWN

A = Fd PK NAIL @ SURFACE

12.2' TO N. EDGE PUT

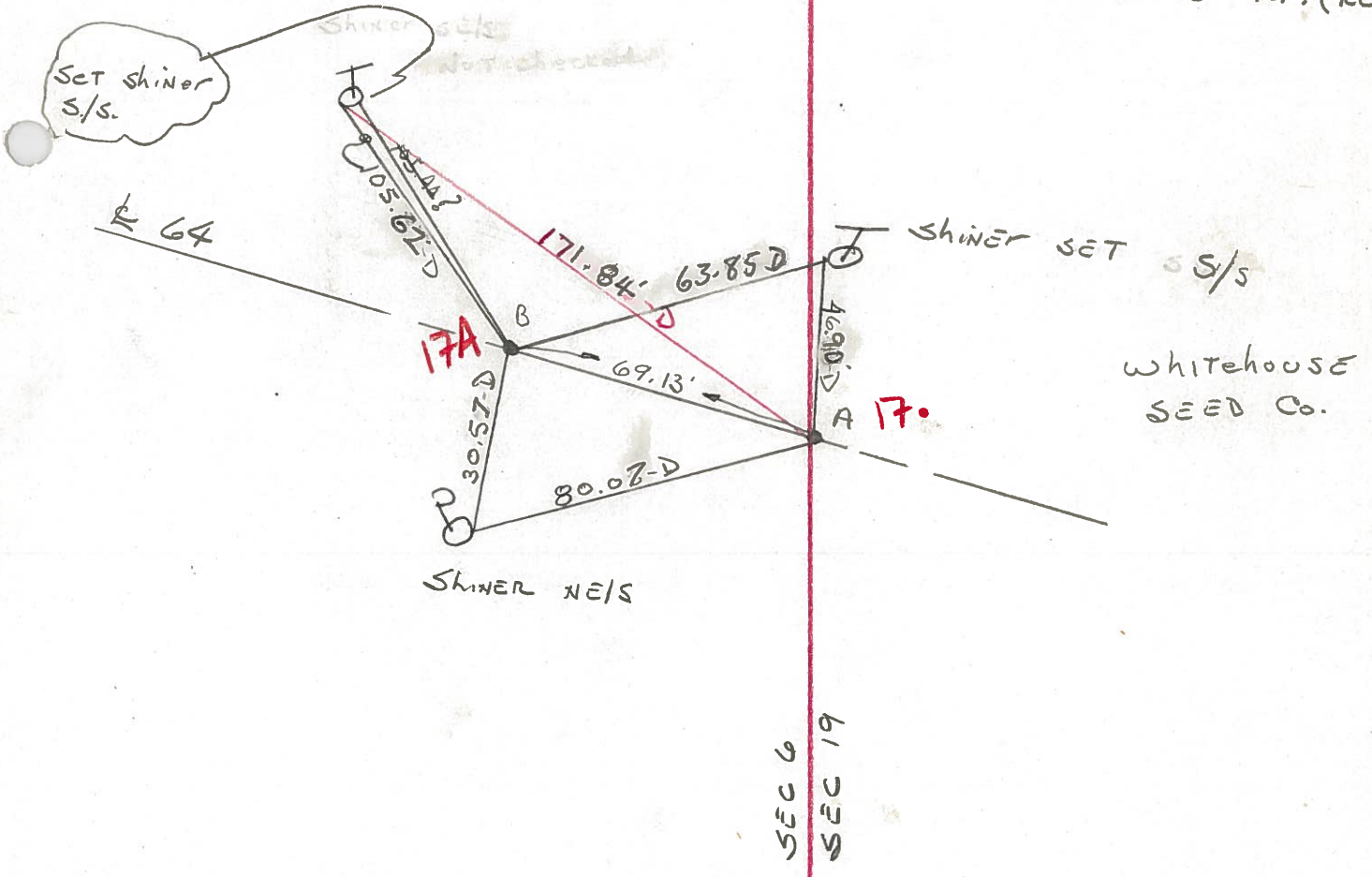
8.0' TO S. EDGE PUT.

B = Fd. R.R. SPK @ SURFACE

11.8' TO N. EDGE PUT.

8.5' TO S. EDGE PUT.

$\Delta = 0^{\circ}-44'-15''$  LT. (REC)





PERSONNEL TITLE PERSONNEL TITLE

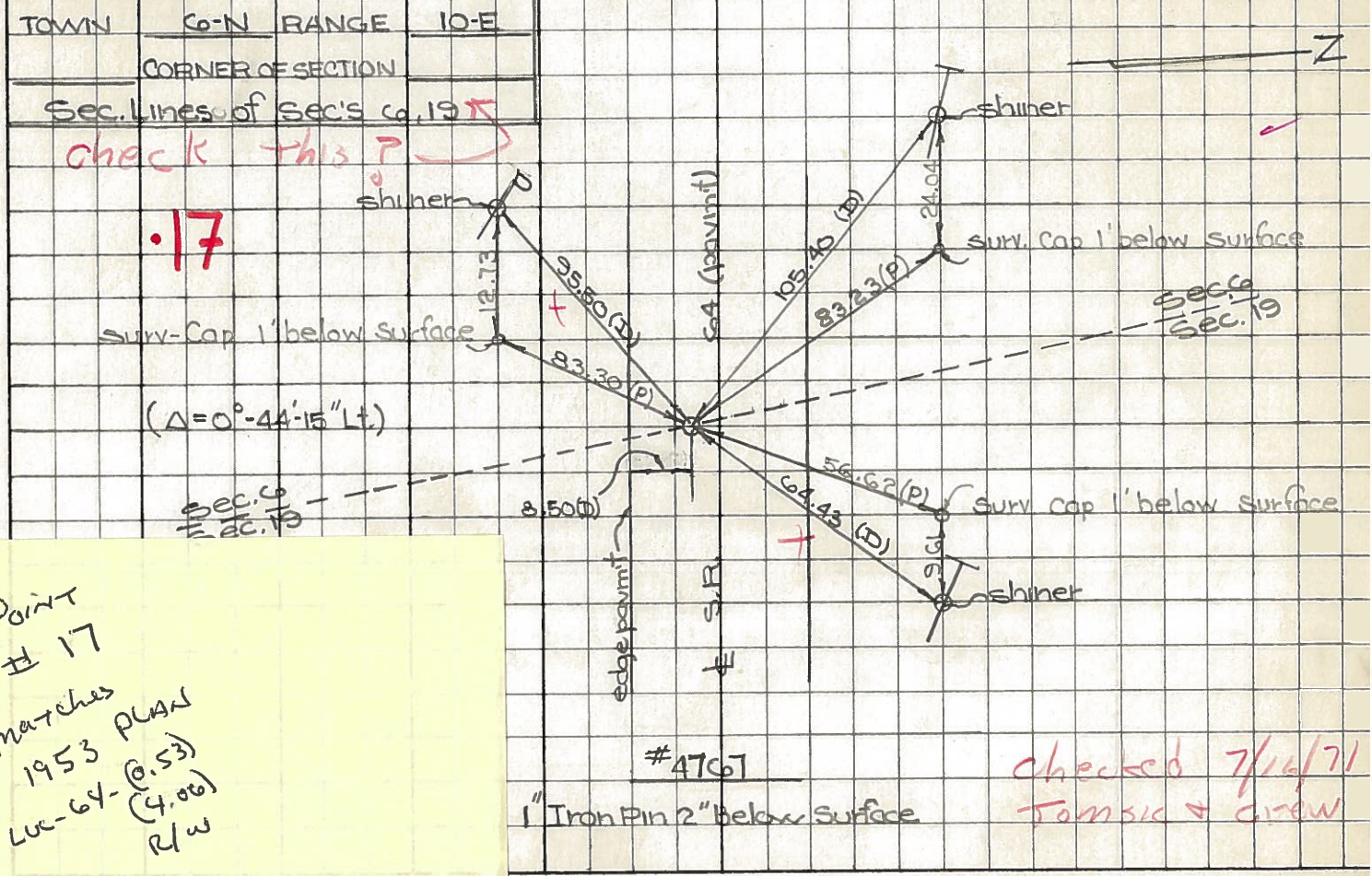
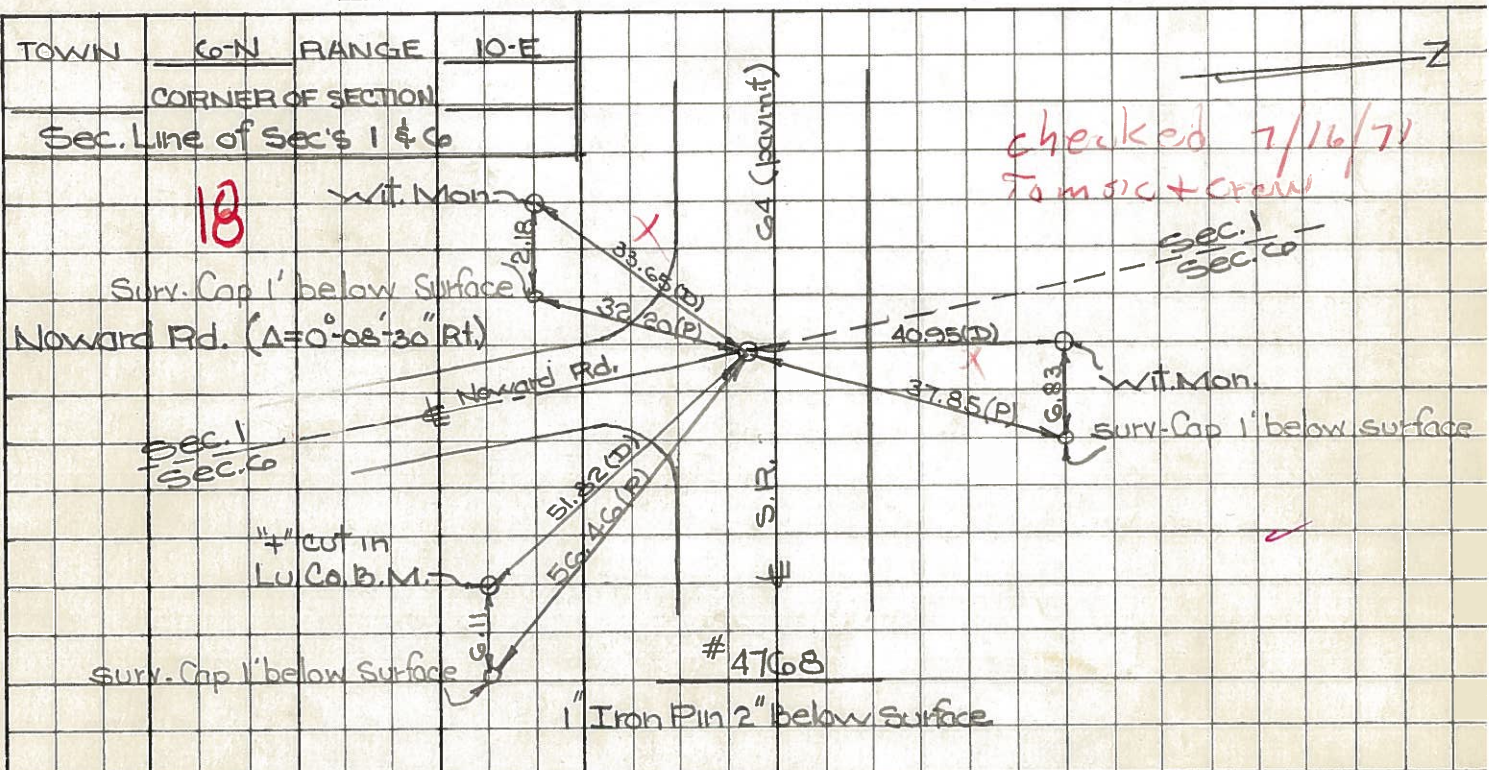
COUNTY Lucas DATE July 31, 1968

D. Curtis  
J. Teal

S. R. Co4 WEATHER mild

SEC. TEMP. 75°±

DESCRIPTION S.R. Co4 - Ref. Mon. & Control Points JOB NO. 02994(0)



Point # 17 matches 1953 PLAN Lu-64-(4.53) (4.06) R/W

PERSONNEL TITLE PERSONNEL TITLE

COUNTY Lucas DATE 24 Feb. 66

Stone

Beck

Brindley

Schroeder

S. R. #64

WEATHER Damp

SEC. Waterville - W.

TEMP. 30°

DESCRIPTION

LEFT

CENTER LINE

RIGHT

JOB NO.

Refs. To Control Pts.

DESCRIPTION	LEFT	CENTER LINE	RIGHT	JOB NO.
<b>11</b> #225	E. Line Sec. 30	35.13'	N.W. To Cor. Ref. Mon. (D)	
	Fd. 1" I. Pin 2" Below Surface	37.68'	N.W. To Shiner in P.P. (D)	
	$\Delta = 0^\circ 40' \text{ Lt.}$	78.19'	N.N.W. To Shiner in 15" Tree (D)	
	Sta. 81+08.86	95.90	N. To S.E. Cor. Fdn. To House (D)	
<b>12</b> #224	N&S $\pm$ Sec. 19	48.18'	N.W. To Con. Wit. Mon. (D)	
	Sta. 109+98.31	50.47'	N.E. To Con. Wit. Mon. (D)	
	$\Delta = 0^\circ 25' \text{ Rt.}$	29.84'	S.E. To Con. Wit. Mon. (D)	
	Fd. 1" I. Pin 2" Below Surface			
<b>15</b> #223	$\frac{1}{2}$ Cor. Sec. 19	45.18'	N.E. To Con. Wit. Mon. (D)	
	Sta. 122+50.54	79.29'	S.W. To Shiner in P.P. (D)	
	$\Delta = 0^\circ 29' 30" \text{ Lt.}$	23.64'	S. To Con. Wit. Mon. (D)	
	Fd. 1" I. Pin 2" Below Surface	44.94'	N.E. To Shiner in T.P. (D)	
<b>16</b>	Sta. 138+30.95	62.82'	N.N.W. To Con. Wit. Mon. (D)	
	$\Delta = 0^\circ 34' \text{ Rt.}$	29.65'	S.S.E. To Shiner in P.P. (D)	
	Fd. 1" I. Pin	30.23'	S.W. To S.W. Cor. Bridge Wall (D)	
	2" Below Surface			
<b>17</b> #220	W. Line Sec. 19	64.49'	N.E. To Shiner in T.P. (D)	
	Sta. 142+55.22	105.25'	N.W. To Shiner in T.P. (D)	
	$\Delta = 0^\circ 44' 15" \text{ Lt.}$	95.54'	W.S.W. To Shiner in P.P. (D)	
	Fd. 1" I. Pin 2" Below Surface			
<b>18</b> #219	Int. Nward Rd	41.00'	N. To Con. Wit. Mon. (D)	
	E. Line Sec. 1	51.82'	S.E. To "t" in Lu. Co. B.M. (D)	
	Sta. 157+30.77	33.70'	S.W. To Con. Wit. Mon. (D)	
	$\Delta = 0^\circ 08' 30" \text{ Rt.}$ Fd. 1" I. Pin 2" Below Surface			