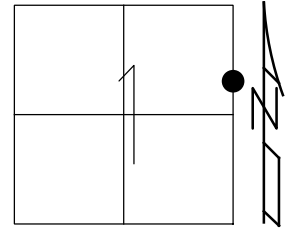


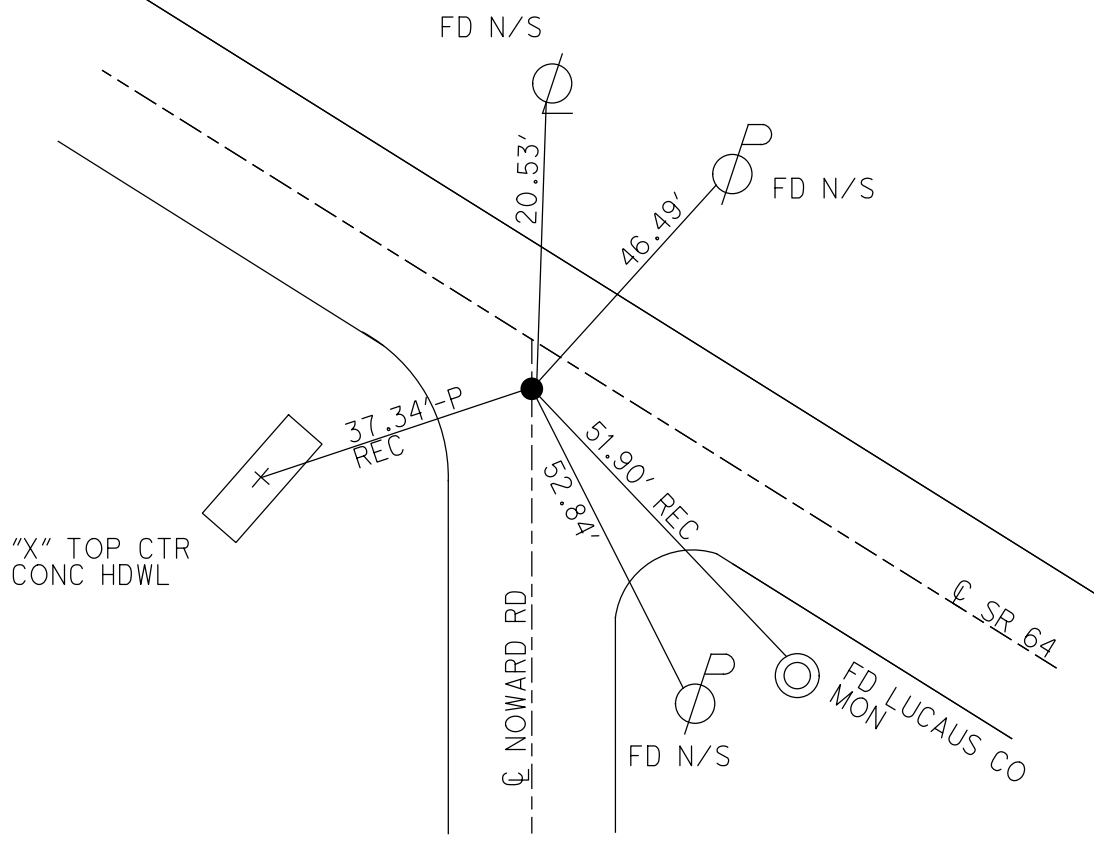
O.D.O.T. DISTRICT 2 SURVEY OFFICE (USE ONLY)

PERSONNEL	REFERENCE NO.	18	SHEET	6	OF	50
NOTES	RHOADES	DATE	6-16-17	ROUTE	SR 64	
H.C.	O'DONNELL	WEATHER	FAIR	COUNTY	LUCAS	
R.C.	CARSON	TEMP.	80°	TOWNSHIP	WATERVILLE	
	POORE			SECTION	1	
				T	6	N
				R	9	E

TYPE MONUMENT SM.R.R.SPIKE  
~~ON SURFACE~~ - BELOW 8"  
~~LEFT~~ - CL PAV'T - RIGHT 2.8'  
12.8' TO RT EDGE PAVEMENT  
 S.L.M. 156+24.73  
 Grid: Northing: 674770.3390 Easting: 1621605.3215



RECORD:  
 P.I. Δ = 0° 08' 30" RT  
 SET MAG NAIL & WASHER  
 12-11-02, DCH  
 FD RR.SPIKE 8" DOWN  
 REF18  
 1-15-16, JFO  
 SET MAG/WASHER  
 12-4-17, JFO



O.D.O.T. DISTRICT 2 SURVEY OFFICE

PERSONNEL

NOTES \_\_\_\_\_  
 H.C. \_\_\_\_\_  
 R.C. \_\_\_\_\_  
 \_\_\_\_\_  
 \_\_\_\_\_

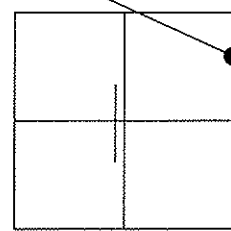
REFERENCE NO. 18

DATE 5-20-02  
 WEATHER CLOUDY  
 TEMP. 48

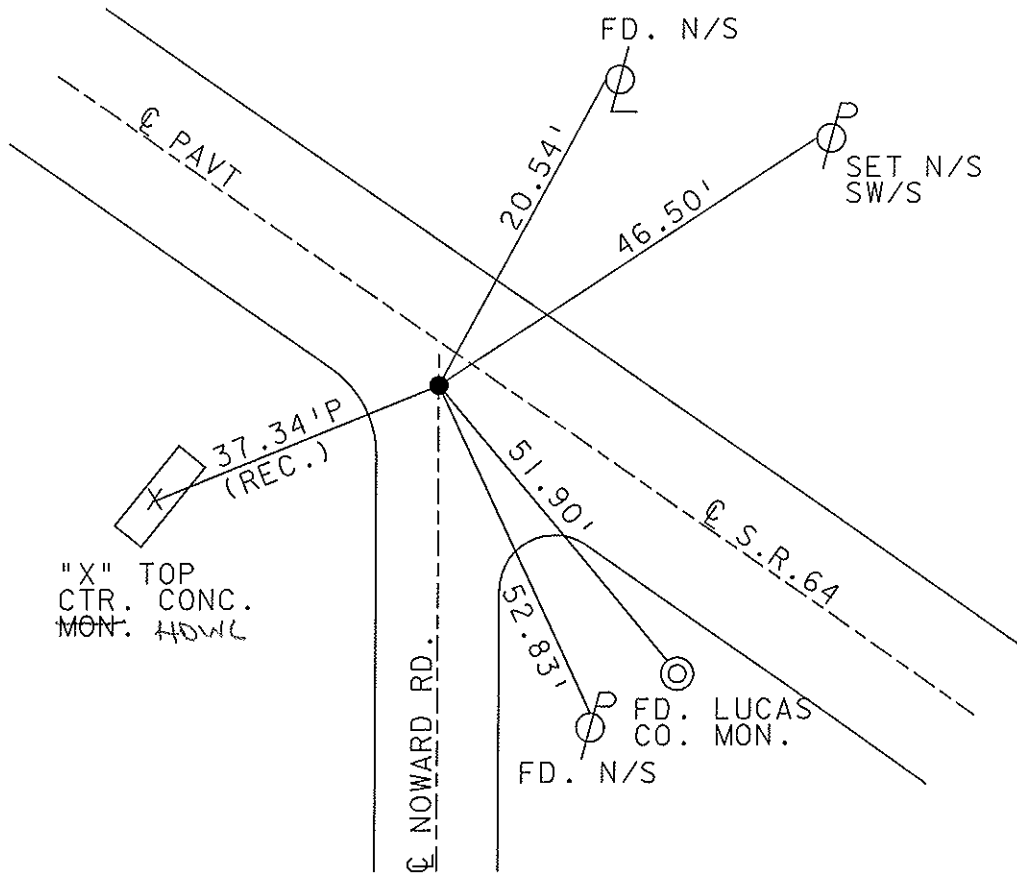
SHEET 20 OF 47

ROUTE S.R. 64  
 COUNTY LUCAS  
 TOWNSHIP WATERVILLE  
 SECTION 1  
T 6 N R 5 E

TYPE MONUMENT SMALL RR SPIKE  
~~ON SURFACE~~ - BELOW 1" BELOW  
 LEFT - ☉ PAVT - ~~RIGHT~~ 2.8  
12.8' TO RT. EDGE PAVEMENT  
 S.L.M. 156+58



SET MAG NAIL &  
 WASHER  
 12-11-02  
 D.C.H.



O.D.O.T. DISTRICT 2 SURVEY OFFICE

PERSONNEL

REFERENCE NO. 18

SHEET 20 OF 49

NOTES LOEHRKE

H.C. STONE

R.C. CURTIS

DATE 8-12-91

WEATHER CLEAR

TEMP. +75

ROUTE S.R. 64

COUNTY LUCAS

TOWNSHIP WATERVILLE

SECTION 1

T O N R S E

TYPE MONUMENT Sm. R.R. Spike Set P.K. Nail

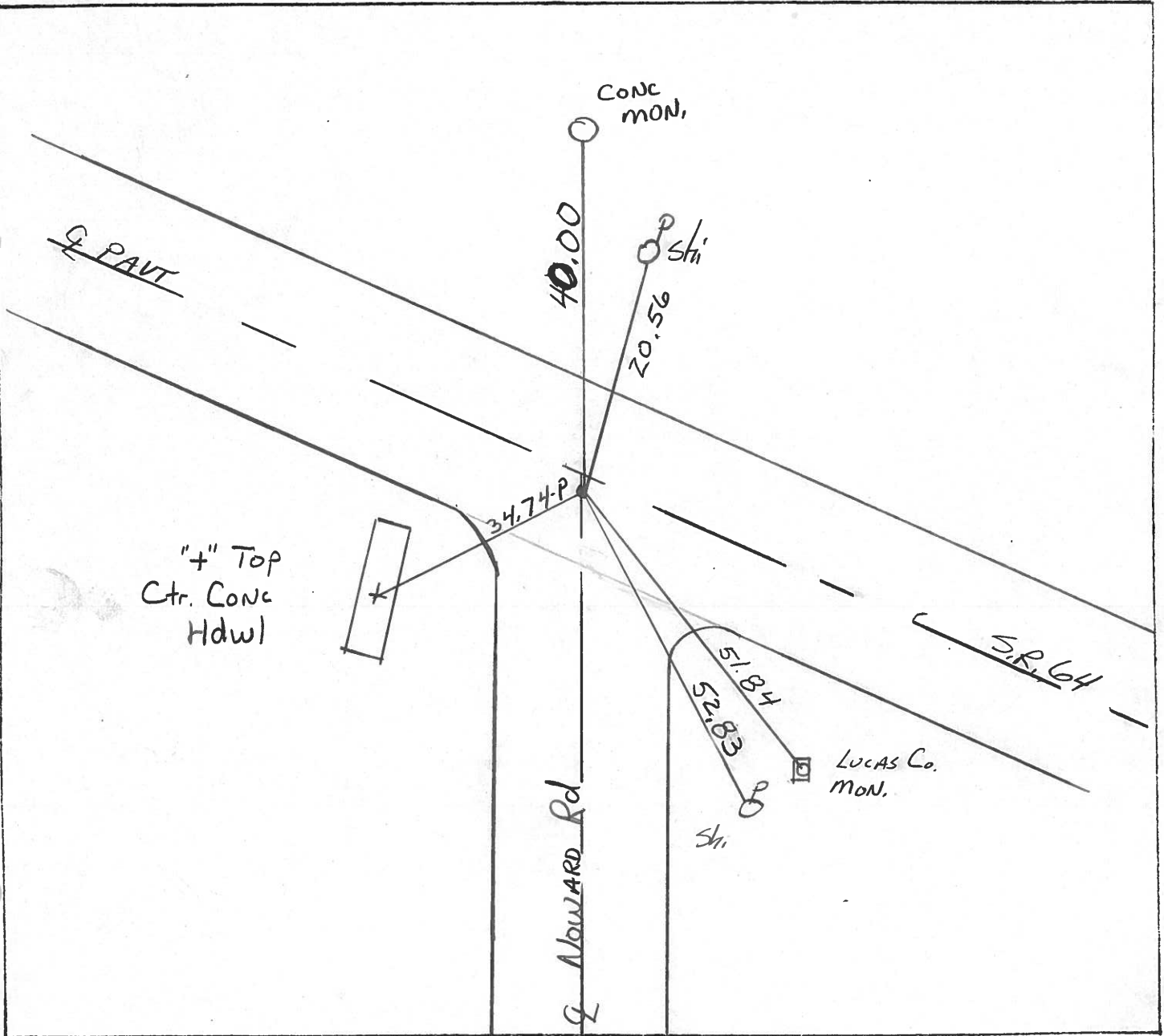
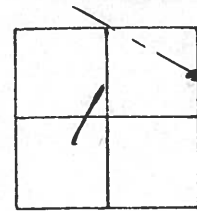
ON SURFACE - ~~BELOW~~ YES

3-4-92

LEFT- & PAV'T. - ~~RIGHT~~ Z.B

12.8 TO RT EDGE PAVEMENT

S.L.M. 157+28



County LUCAS S.R. 64

Date 5-22-81

Township WATERVILLE

Weather Clear

Section 1

Temp. 68°

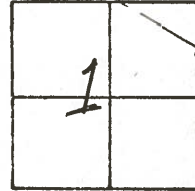
T6N, R5E

Personnel S. Hoffmann

C. Doehrke

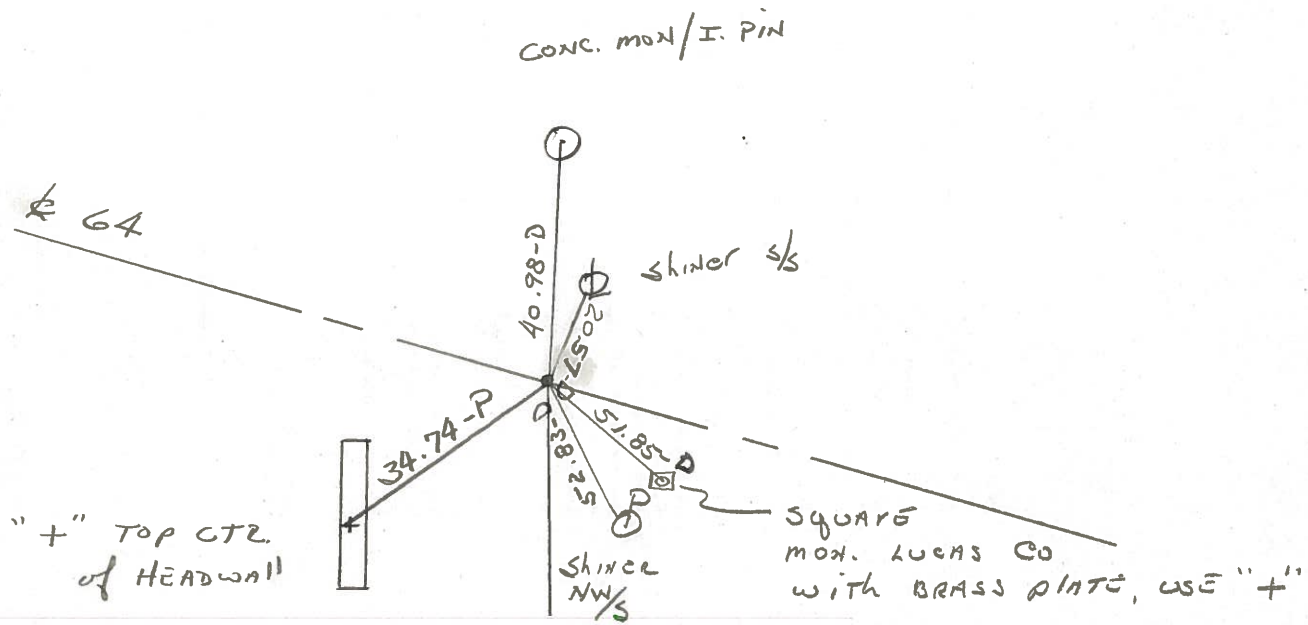
L. Householder

# 18



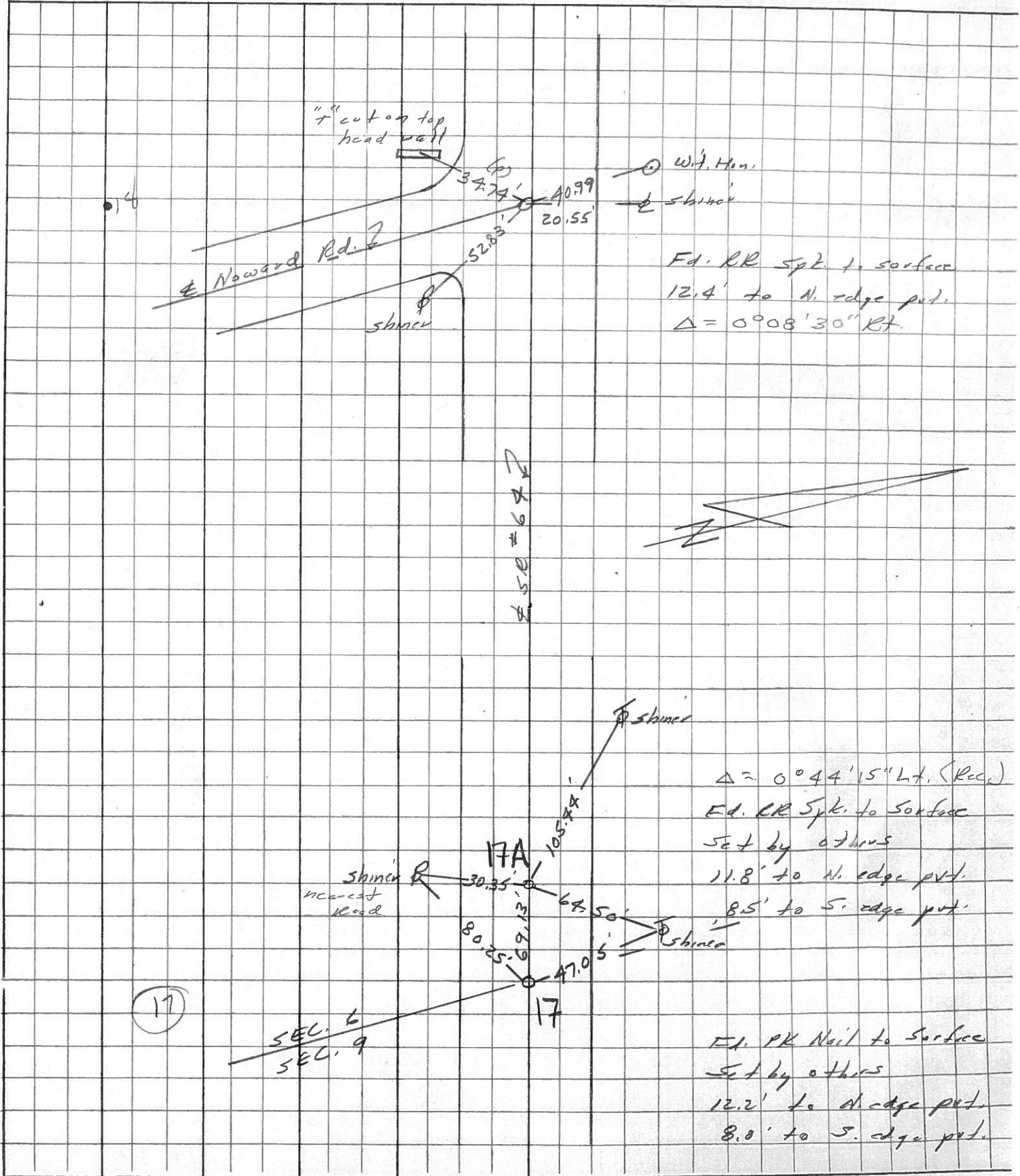
FD. R.R. SPK / t  
10-28-81  
SWH

FD. SMALL R.R. SPK @ SURFACE  
12.4' TO N. EDGE PUT  
 $\Delta = 0^{\circ}-08'-30''$  (REC)  
RT.



PERSONNEL	TITLE	PERSONNEL	TITLE	COUNTY	DATE	WEATHER	TEMP.
Stone				Lucas	29 March 77	Windy	72°
E				S. R. 64			
Crew				SEC. Waterville to Whitehouse			

DESCRIPTION References to Control Points JOB NO. \_\_\_\_\_



PERSONNEL TITLE PERSONNEL TITLE

COUNTY Lucas DATE July 31, 1960

D. Curtis

S. R. Co4

WEATHER mild

J. Teal

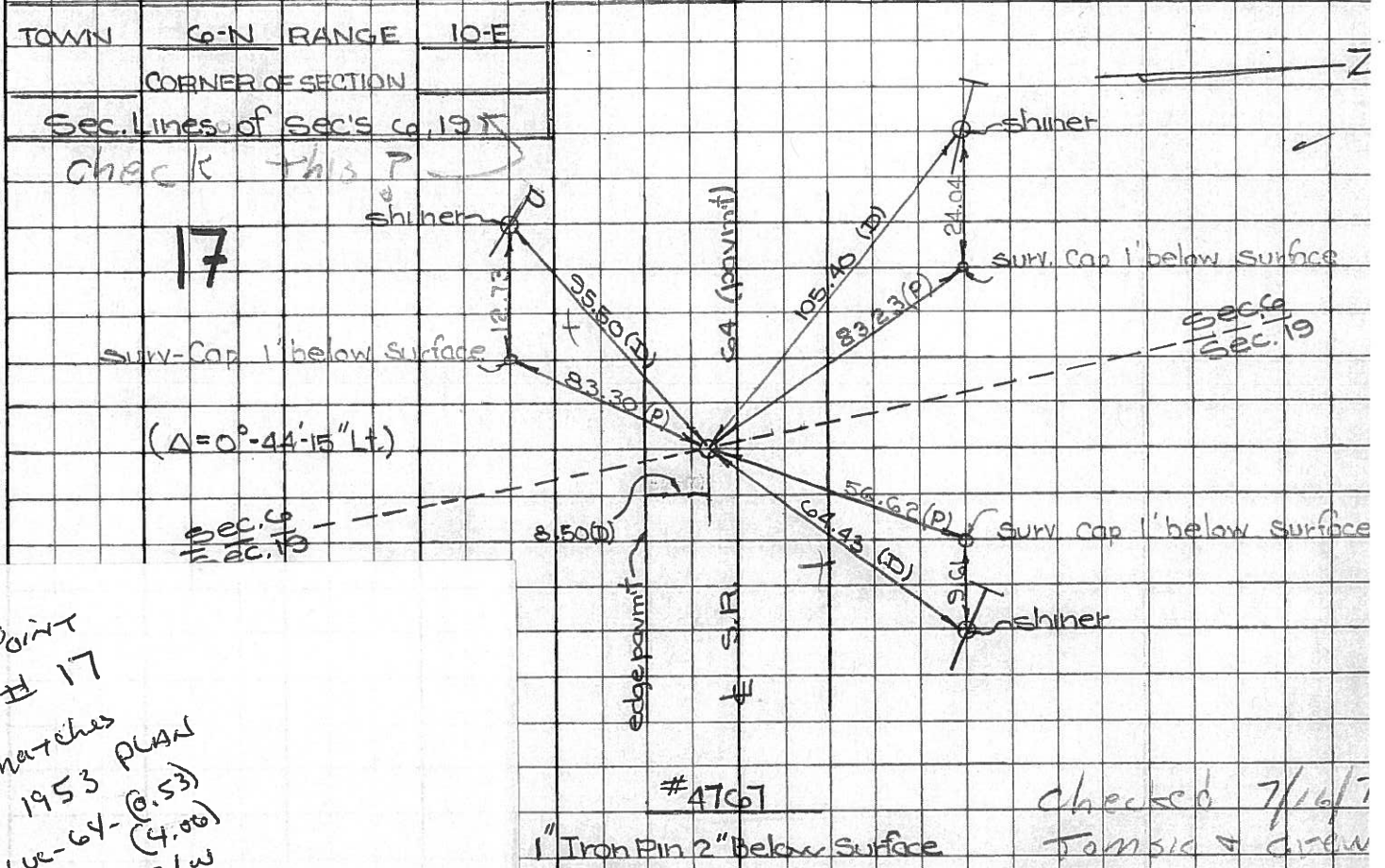
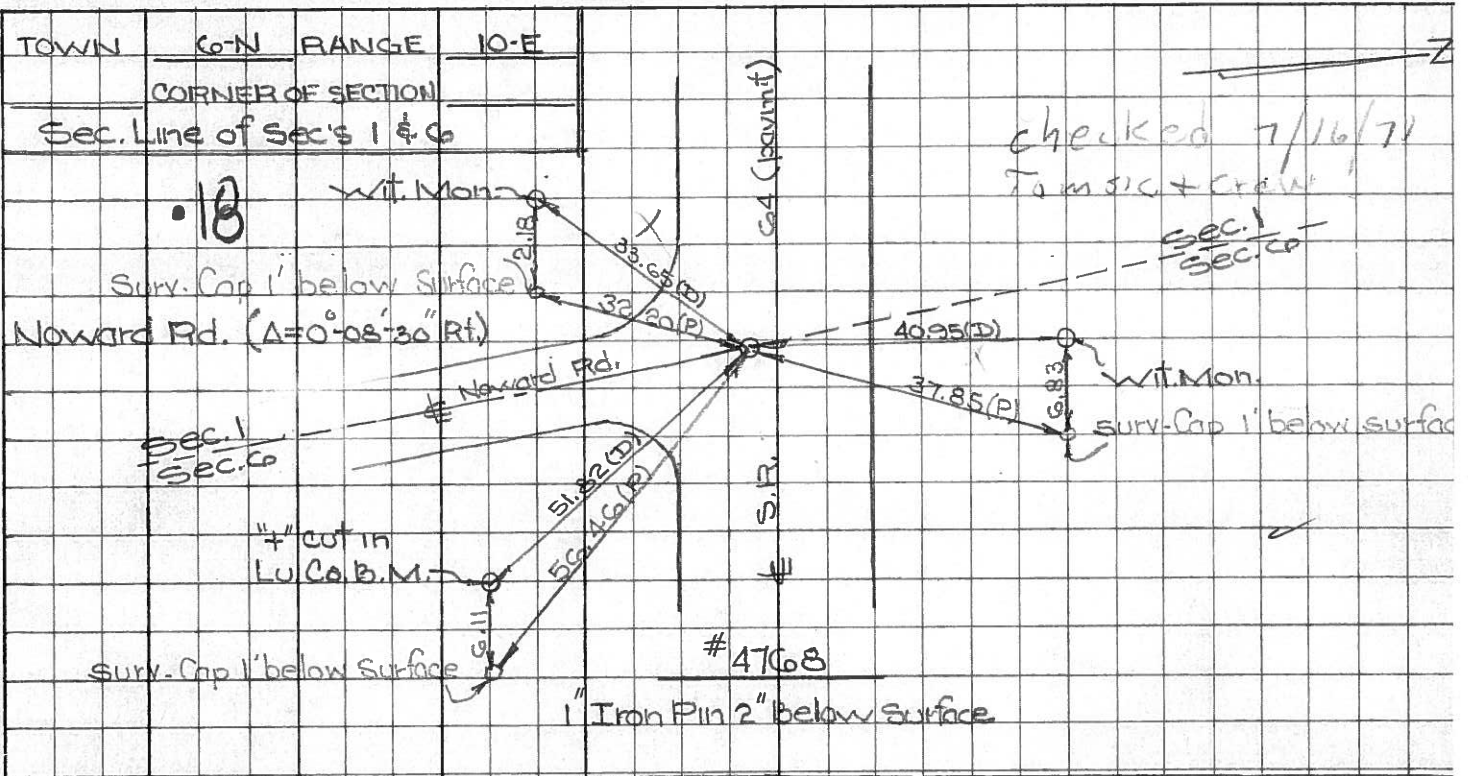
SEC.

TEMP.

75°±

DESCRIPTION S.R. Co4 - Ref. Mon. & Control Points

JOB NO. 0299401



Point # 17 matches plan 1953 PLAN 100-64-(0.53) (4.00) - 1W

PERSONNEL TITLE PERSONNEL TITLE

COUNTY Lucas DATE 24 Feb. 66

Stone

Beck

Brindley

Schroeder

S. R. #64

WEATHER Damp

SEC. Waterville - W.

TEMP. 30°

DESCRIPTION

LEFT

CENTER LINE

RIGHT

JOB NO.

Refs. To Control Pts.

DESCRIPTION	LEFT	CENTER LINE	RIGHT	JOB NO.
<b>11</b>				
#225	E. Line Sec. 30	35.13'	N.W. To Cor. Ref. Mon. (D)	
	Fd. 1" I. Pin 2" Below Surface	37.68'	N.W. To Shiner in P.P. (D)	
	$\Delta = 0^\circ 40' \text{ Lt.}$	78.19'	N.N.W. To Shiner in 15" Tree (D)	
	Sta. 81+08.86	95.90	N. To S.E. Cor. Fdn. To House (D)	
<b>12</b>				
#224	N&S E Sec. 19	48.18'	N.W. To Cor. Wit. Mon. (D)	
	Sta. 109+98.31	50.47'	N.E. To Cor. Wit. Mon. (D)	
	$\Delta = 0^\circ 25' \text{ Rt.}$	29.84'	S.E. To Cor. Wit. Mon. (D)	
	Fd. 1" I. Pin 2" Below Surface			
<b>15</b>				
#223	1/2 Cor. Sec. 19	45.18'	N.E. To Cor. Wit. Mon. (D)	
	Sta. 122+50.59	79.29'	S.W. To Shiner in P.P. (D)	
	$\Delta = 0^\circ 39' 30" \text{ Lt.}$	23.64'	S. To Cor. Wit. Mon. (D)	
	Fd. 1" I. Pin 2" Below Surface	44.94'	N.E. To Shiner in T.P. (D)	
<b>16</b>				
	Sta. 138+30.95	62.82'	N.N.W. To Cor. Wit. Mon. (D)	
	$\Delta = 0^\circ 34' \text{ Rt.}$	29.65'	S.S.E. To Shiner in P.P. (D)	
	Fd. 1" I. Pin	30.23'	S.W. To S.W. Cor. Bridge Wall (D)	
	2" Below Surface			
<b>17</b>				
#220	W. Line Sec. 19	64.49'	N.E. To Shiner in T.P. (D)	
	Sta. 142+55.22	105.25'	N.W. To Shiner in T.P. (D)	
	$\Delta = 0^\circ 44' 15" \text{ Lt.}$	95.54'	W.S.W. To Shiner in P.P. (D)	
	Fd. 1" I. Pin			
	2" Below Surface			
<b>18</b>				
#219	Int. Nward Rd	41.00'	N. To Cor. Wit. Mon. (D)	
	E. Line Sec. 1	51.82'	S.E. To "t" in Lu. Co. B.M. (D)	
	Sta. 157+30.77	33.70'	S.W. To Cor. Wit. Mon. (D)	
	$\Delta = 0^\circ 08' 30" \text{ Rt.}$			
	Fd. 1" I. Pin 2" Below Surface			