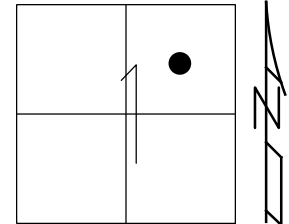


O.D.O.T. DISTRICT 2 SURVEY OFFICE (USE ONLY)

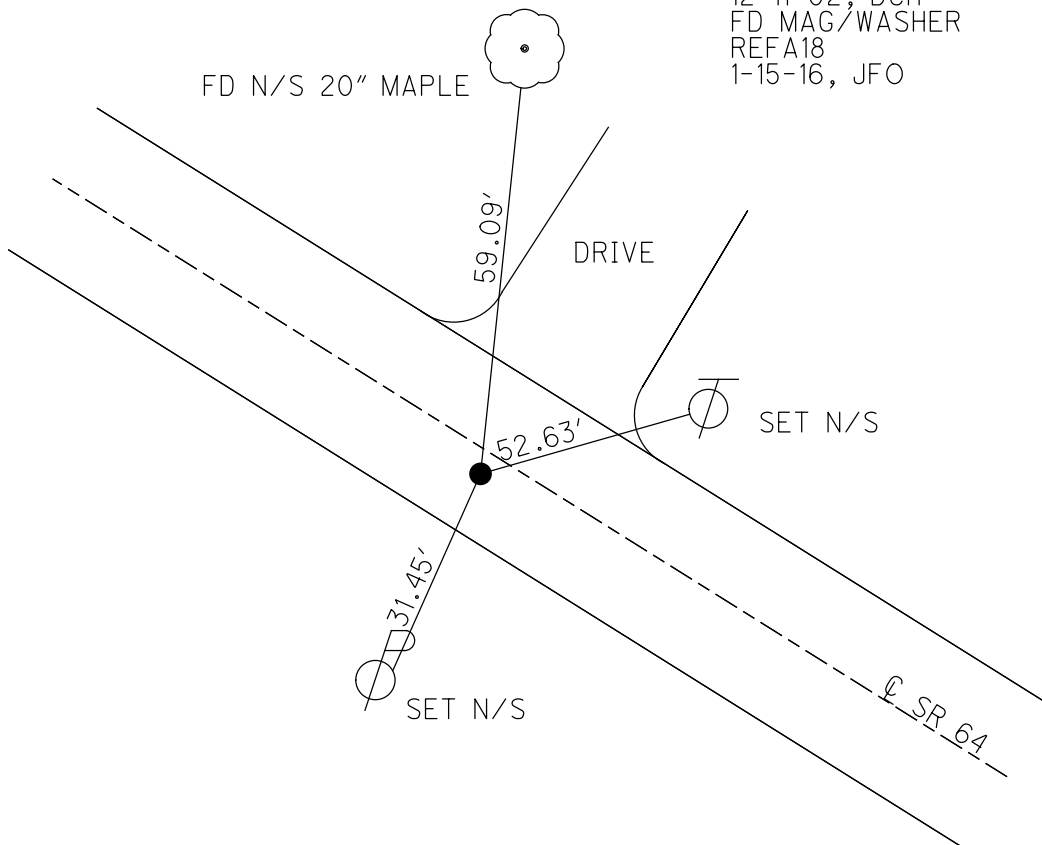
PERSONNEL \_\_\_\_\_ REFERENCE NO. 18 A SHEET 7 OF 50  
 NOTES RHAODES DATE 6-16-17 ROUTE SR 64  
 H.C. O'DONNELL WEATHER FAIR COUNTY LUCAS  
 R.C. CARSON TEMP. 80° TOWNSHIP WATERVILLE  
 \_\_\_\_\_ POORE \_\_\_\_\_ SECTION 1  
 \_\_\_\_\_ T 6 N R 9 E

TYPE MONUMENT MAG/WASHER  
 ON SURFACE - ~~BELOW~~ ON \_\_\_\_\_  
 LEFT - Q PAV'T - ~~RIGHT~~ 3'  
11' TO LT. EDGE PAVEMENT  
 S.L.M. 170+19



Grid: Northing: 675262.0605 Easting: 1620300.1165

RECORD :  
 (7-20-1971)  
 POINT IS 1320'± N.W. OF SR  
 64 AND NOWARD RD.  
 IT IS MID-POINT OF THE N.E.  
 1/4 QUADRANT OF SECTION 1  
 FOUND R.R.SPIKE AT SURFACE  
 7-20-1971  
 SET MAG/WASHER  
 12-11-02, DCH  
 FD MAG/WASHER  
 REFA18  
 1-15-16, JFO



O.D.O.T. DISTRICT 2 SURVEY OFFICE

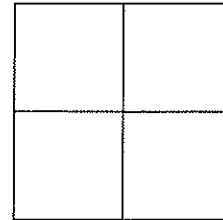
PERSONNEL

NOTES ROUSOS  
 H.C. HOMAN  
 R.C. MICHALAK  
 \_\_\_\_\_  
 \_\_\_\_\_

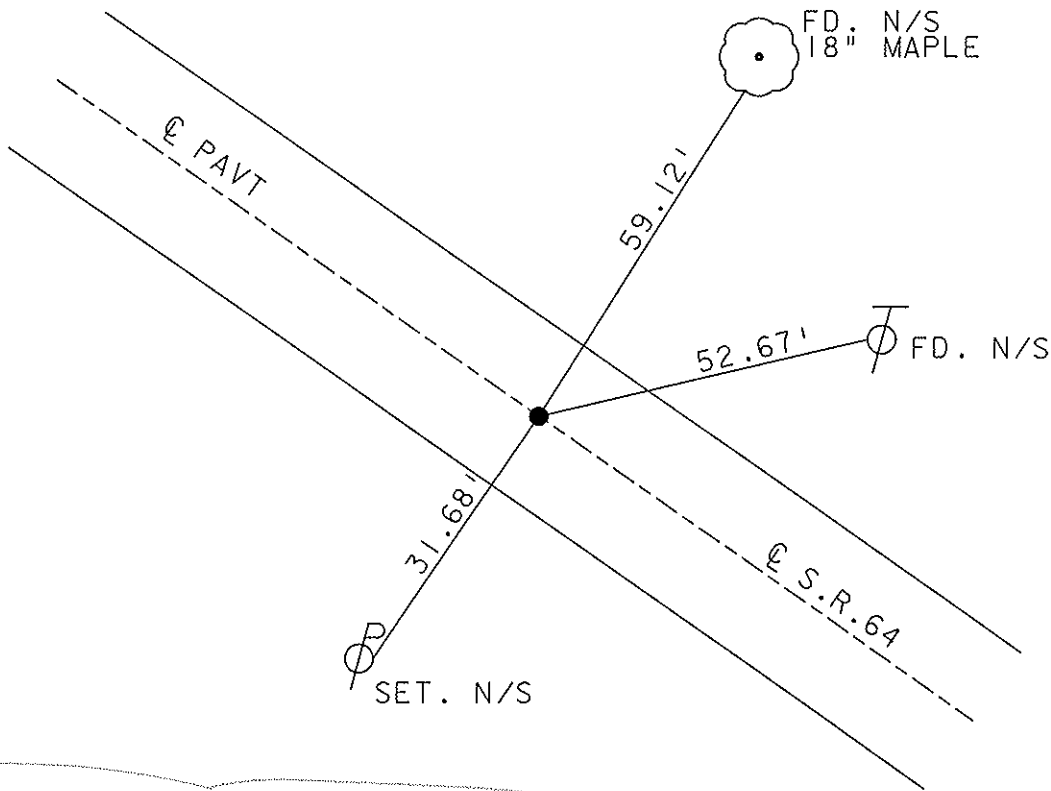
REFERENCE NO. 18-A SHEET 21 OF 47  
 DATE 5-21-02  
 WEATHER SUNNY  
 TEMP. 48

ROUTE S.R. 64  
 COUNTY LUCAS  
 TOWNSHIP WATERVILLE  
 SECTION 1  
T 6 N R 10 E

TYPE MONUMENT RR SPIKE  
 ON SURFACE - ~~BELOW~~ 5" BELOW  
~~LEFT - Q PAV'T - RIGHT~~ ON  
11' TO LT. EDGE PAVEMENT  
 S.L.M. 170+54



SET MAG NAIL  
 & WASHER  
 12-11-02  
 DCH



Record Data (7-20-1971)  
 Point is 1320'± N.W. of S.R. 64 at Newaco Road  
 It is mid-point of the N.E. 1/4 quadrant of Section 1  
 Found R.R. spike at surface

PERSONNEL TITLE PERSONNEL TITLE

Tomsic

Jackson

COUNTY Lucas

DATE July 20, 1971

Neuser

S. R. #64

WEATHER P. Cloudy

Yanyo

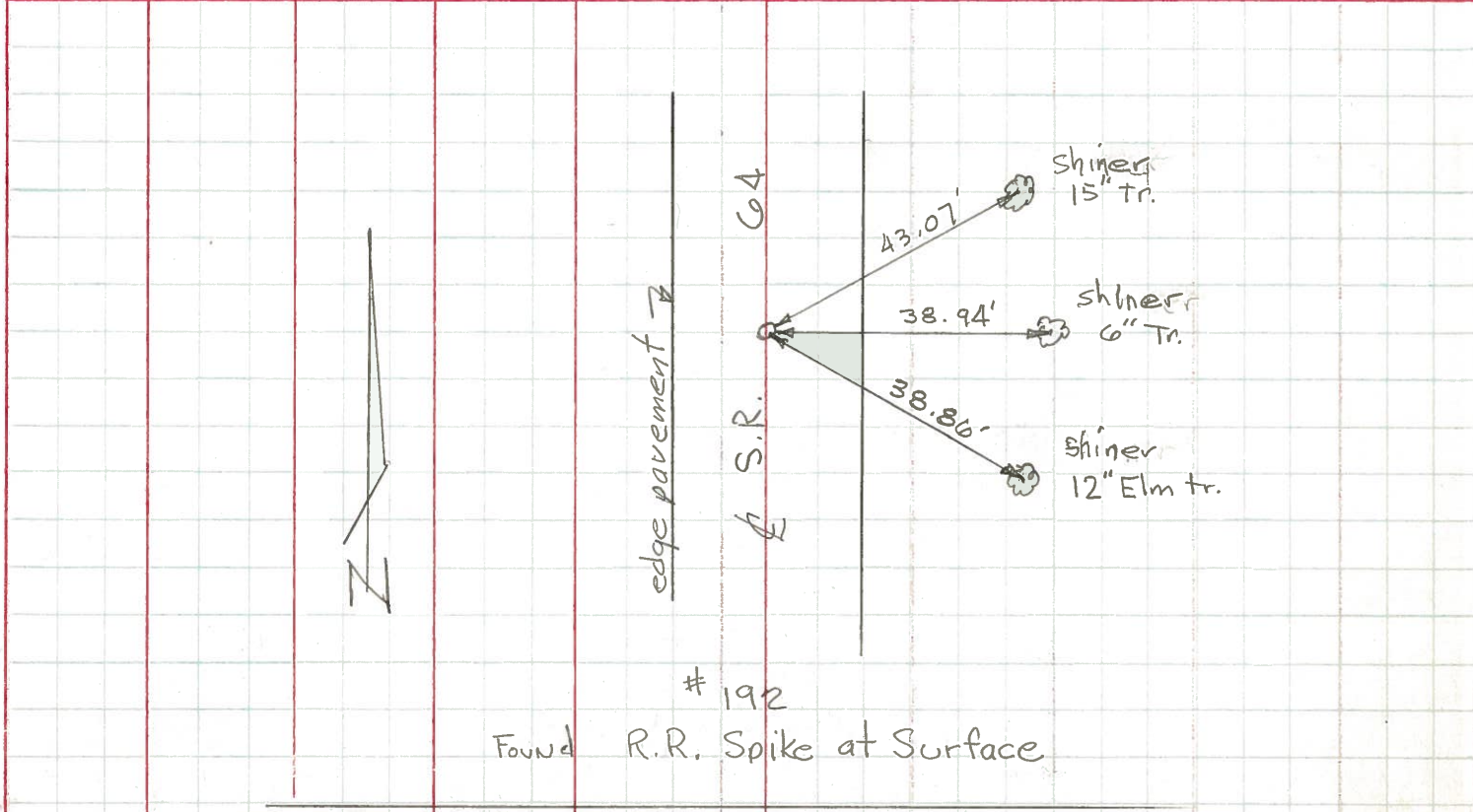
SEC. \_\_\_\_\_

TEMP. \_\_\_\_\_

Granata

DESCRIPTION Between E. & W. C section #18 & N. Line of Sec. #18

JOB NO. \_\_\_\_\_



Description: T-6N R-10E Point is 1320± N.W. of S.R. #64 & Noward Rd.  
 It is Mid Point of the N.E. 1/4 Quadrant of Section 1  
 T-6N, R-10E

18A

