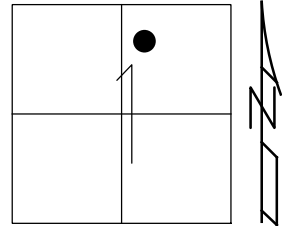


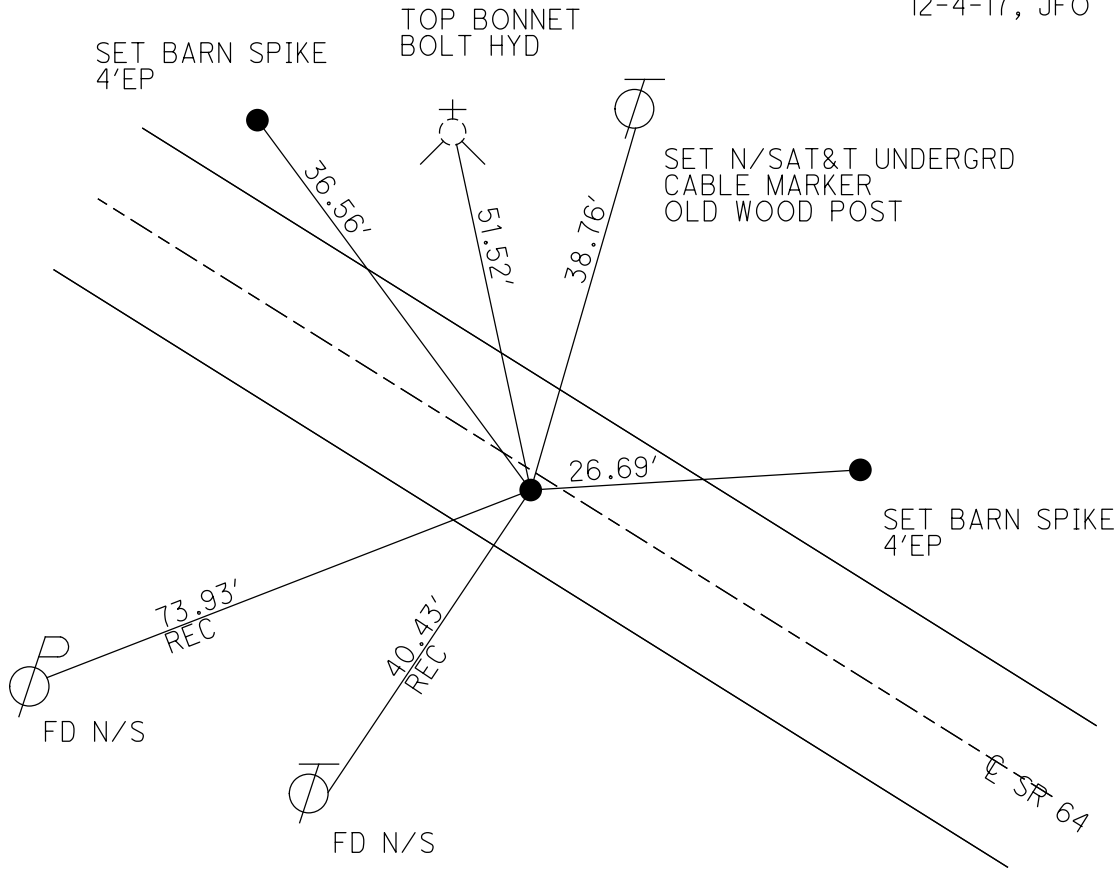
O.D.O.T. DISTRICT 2 SURVEY OFFICE (USE ONLY)

PERSONNEL _____ REFERENCE NO. 19 SHEET 8 OF 50
 NOTES RHOADES DATE 6-16-17 ROUTE SR 64
 H.C. O'DONNELL WEATHER FAIR COUNTY LUCAS
 R.C. CARSON TEMP. 73° TOWNSHIP WATERVILLE
 _____ POORE _____ SECTION 1
 _____ T 6 N R 9 E

TYPE MONUMENT MAG NAIL
 ON SURFACE - ~~BELOW~~ ON _____
 LEFT - ☉ PAV'T - ~~RIGHT~~ 2.3'
7.8' TO LT EDGE PAVEMENT
 S.L.M. 184+38
 Grid: Northing: 675763.2075 Easting: 1618973.0304



RECORD:
 SET P.K.NAIL/WASHER
 8-07-02, DCH
 FD MAG REF19,
 1-4-16
 1-15-16, JFO
 SET MAG/WASHER
 12-4-17, JFO



O.D.O.T. DISTRICT 2 SURVEY OFFICE

PERSONNEL

REFERENCE NO. 19

SHEET 22 OF 47

NOTES ROUSOS

DATE 5-21-02

ROUTE S.R. 64

H.C. HOMAN

WEATHER SUNNY

COUNTY LUCAS

R.C. MICHALAK

TEMP. 50

TOWNSHIP WATERVILLE

SECTION 1

T 6 N R 5 E

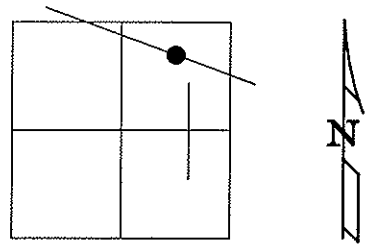
TYPE MONUMENT Small RR SPIKE

ON SURFACE - ~~BELOW~~ YES

LEFT - Q PAV'T - ~~RIGHT~~ 2.3'

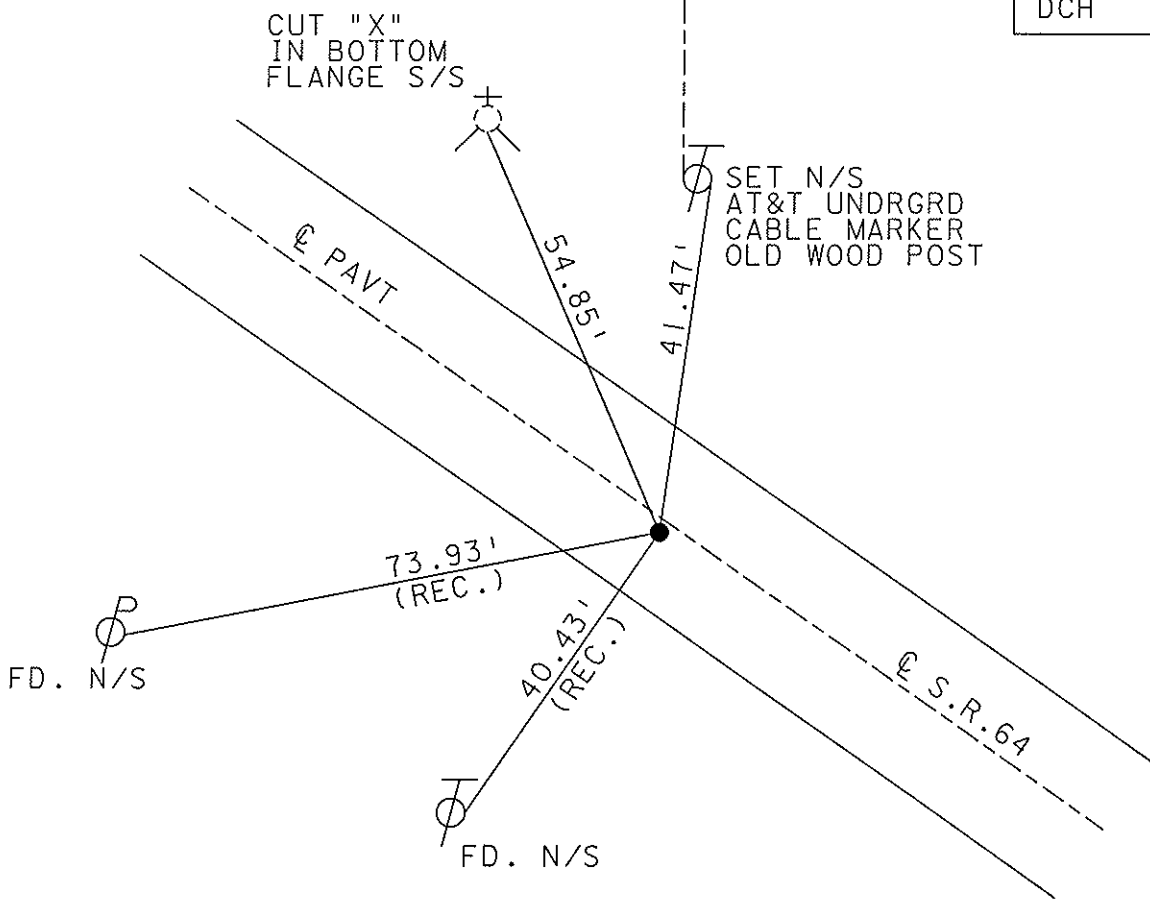
7.8' TO LT. EDGE PAVEMENT

S.L.M. 184+65



P.O.T.

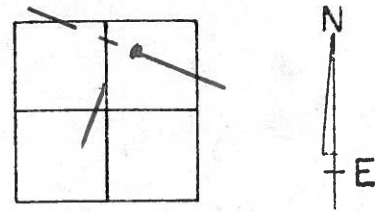
SET MAG NAIL
& WASHER
8-7-02
DCH



O.D.O.T. DISTRICT 2 SURVEY OFFICE

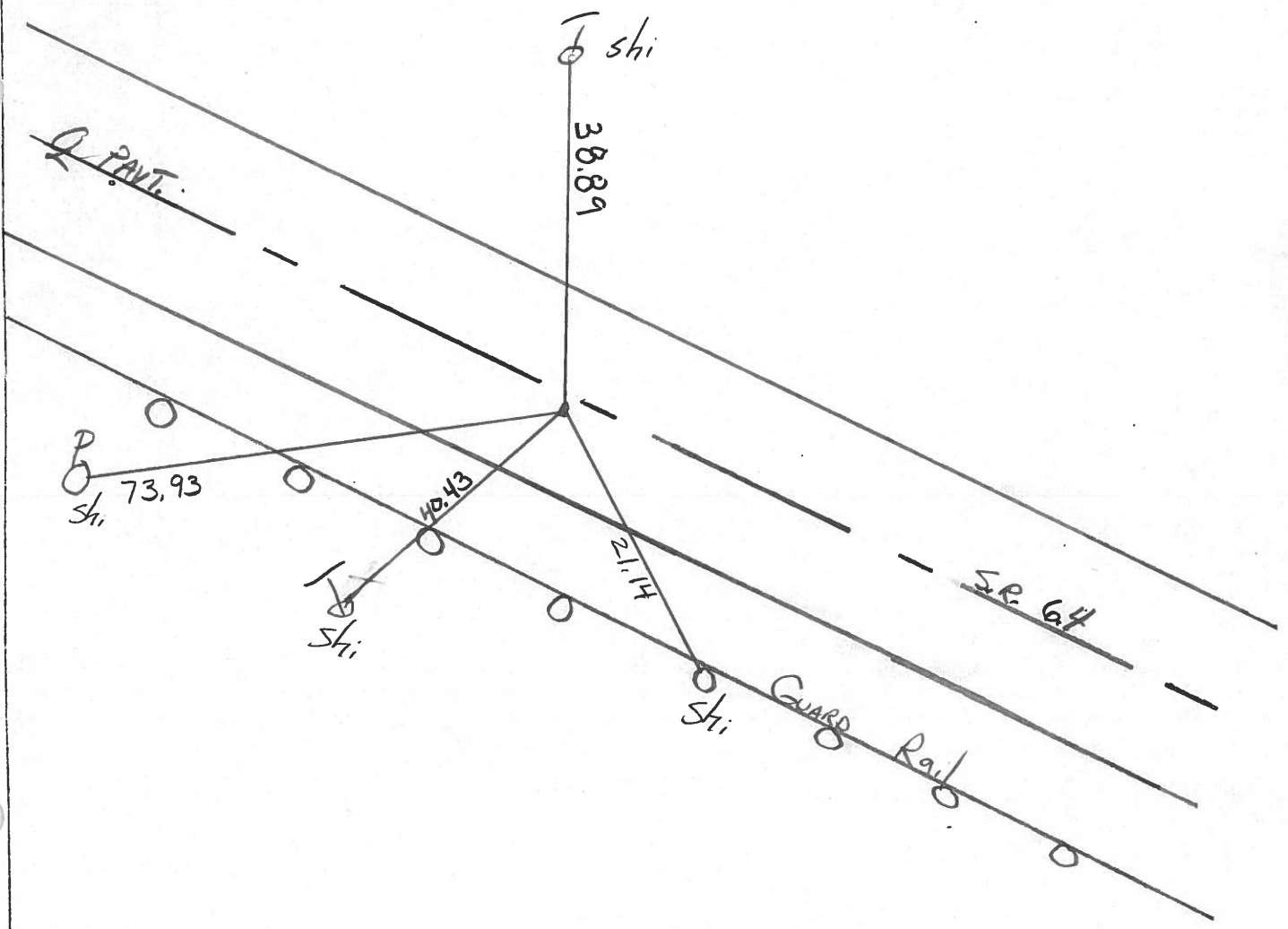
PERSONNEL	REFERENCE NO. <u>19</u>	SHEET <u>21</u> OF <u>49</u>
NOTES <u>LOEHKE</u>	DATE <u>8-12-91</u>	ROUTE <u>S.R. 64</u>
H.C. <u>STONE</u>	WEATHER <u>CLEAR</u>	COUNTY <u>LUCAS</u>
R.C. <u>CURTIS</u>	TEMP. <u>+75</u>	TOWNSHIP <u>WATERVILLE</u>
		SECTION <u>1</u>
		<u>T 6 N R 5 E</u>

TYPE MONUMENT Sm. R.R. Spike Set P.K. Nail
 ON SURFACE - ~~BELOW~~ Yes 3-4-92
 LEFT-o PAV'T. - RIGHT 2,3
7.8 TO Lt EDGE PAVEMENT
 S.L.M. 185 + 35



P.O.T.

EAST
 P of
 L of
 Ford Dealer
 ↪



County LUCAS S.R. 64

Date 5-22-81

Township WATERVILLE

Weather clear

Section 1

Temp. 70°

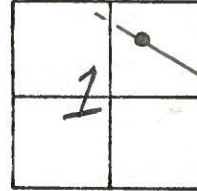
T6N, R5E

Personnel S. Hoffmann

C. Lochrke

L. Householder

19



FD. R.R. SPK/T

10-28-81

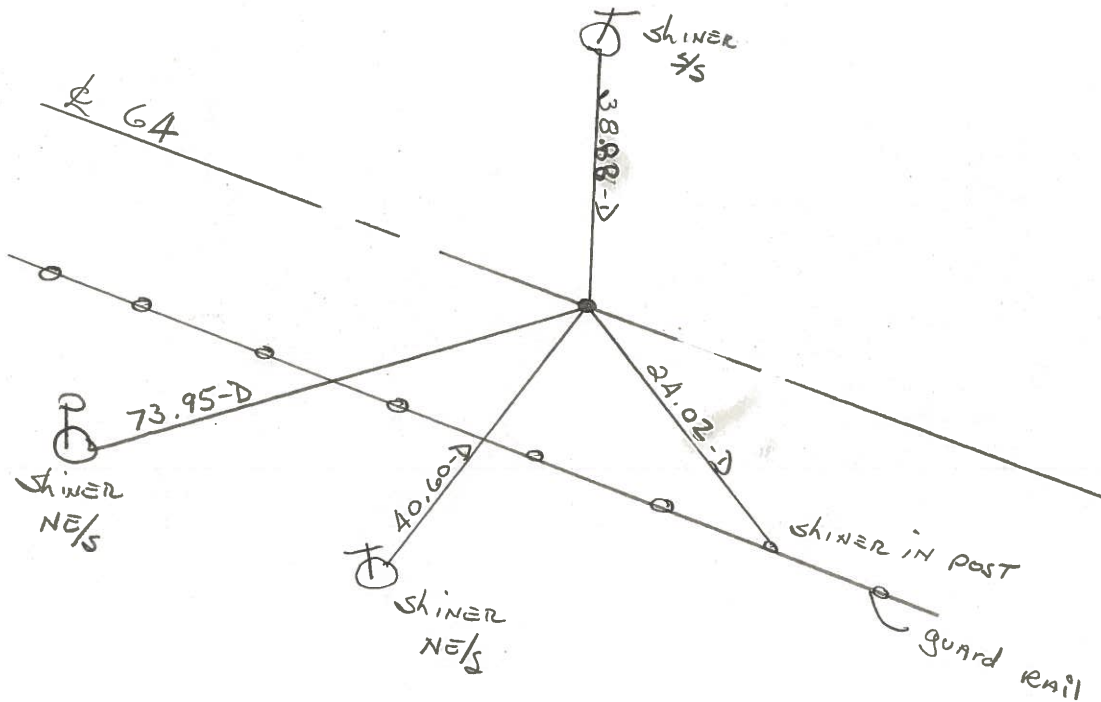
SUN

FD. R.R. SPK @ SURFACE

P.O.T.

12.1' TO N. EDGE PUT

8.0' TO S. EDGE PUT



PERSONNEL	TITLE	PERSONNEL	TITLE	COUNTY	DATE	WEATHER	TEMP.
Stoys				Lucas	1 April, 77	Cloudy	42°
E				S. R. 67			
Craw				SEC. Waterville to Whitehse			

DESCRIPTION References to Control Points JOB NO. _____

