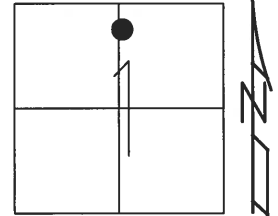


O.D.O.T. DISTRICT 2 SURVEY OFFICE (USE ONLY)

PERSONNEL _____ REFERENCE NO. 20 SHEET 9 OF 50
 NOTES RHOADES DATE 5-21-15 ROUTE SR 64
 H.C. O'DONNELL WEATHER CLOUDY COUNTY LUCAS
 R.C. RHOADES TEMP. 60°F TOWNSHIP WATERVILLE
 SECTION 1
 T 6 N R 9 E

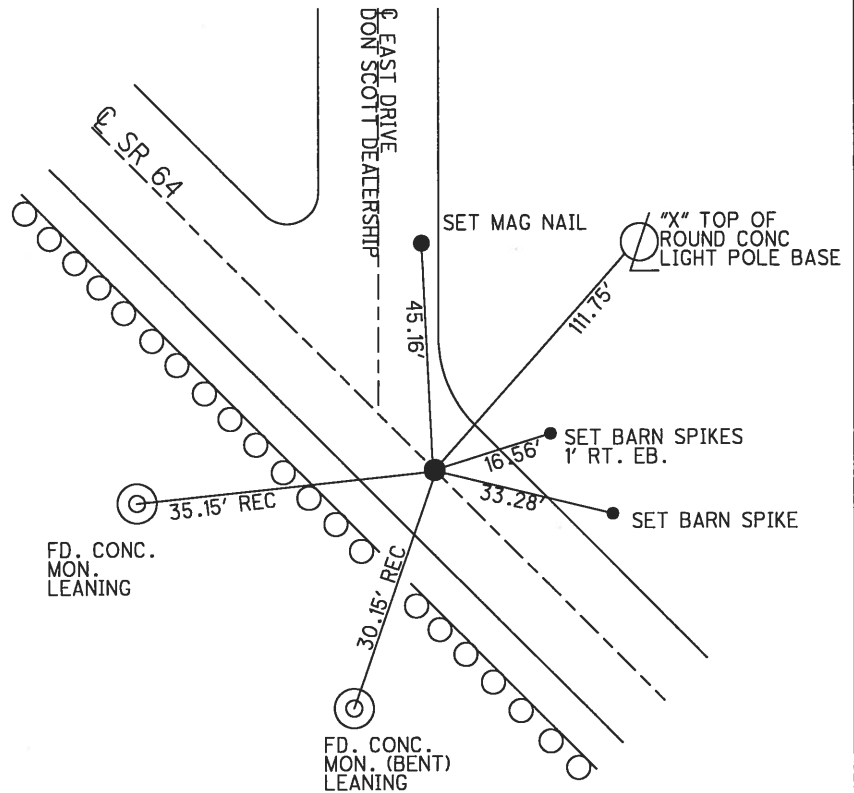
TYPE MONUMENT MAG/WASHER
 ON SURFACE - ~~BELOW~~ ON _____
 LEFT - ☉ PAV'T - ~~RIGHT~~ 2.8'
7.1' TO LT EDGE PAVEMENT
 S.L.M. 190+67.64



Grid: Northing: 675984.3842 Easting: 1618383.5623

RECORD:
 P.I. Δ=0°08'30"RT
 SET MAG/WASHER
 12-12-02, DCH
 FD MAG/WASHER
 REF20
 5-21-15, JFO
 FD MONBOX
 1-4-16, JFO

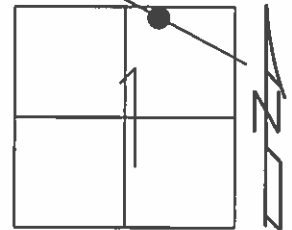
NOTE: NEW ROUND ABOUT CONSTRUCTED



O.D.O.T. DISTRICT 2 SURVEY OFFICE (USE ONLY)

PERSONNEL _____ REFERENCE NO. 20 SHEET 1 OF 5
 NOTES RHOADES DATE 5-21-15 ROUTE SR 64
 H.C. O'DONNELL WEATHER CLOUDY COUNTY LUCAS
 R.C. RHOADES TEMP. 60°F TOWNSHIP WATERVILLE
 _____ SECTION 1
 _____ T 6 N R 5 E

TYPE MONUMENT MAG/WASHER
 ON SURFACE - ~~BELOW~~ ON
 LEFT - ☉ PAV'T - ~~RIGHT~~ 2.8'
7.1' TO LT EDGE PAVEMENT
 S.L.M. 191+00

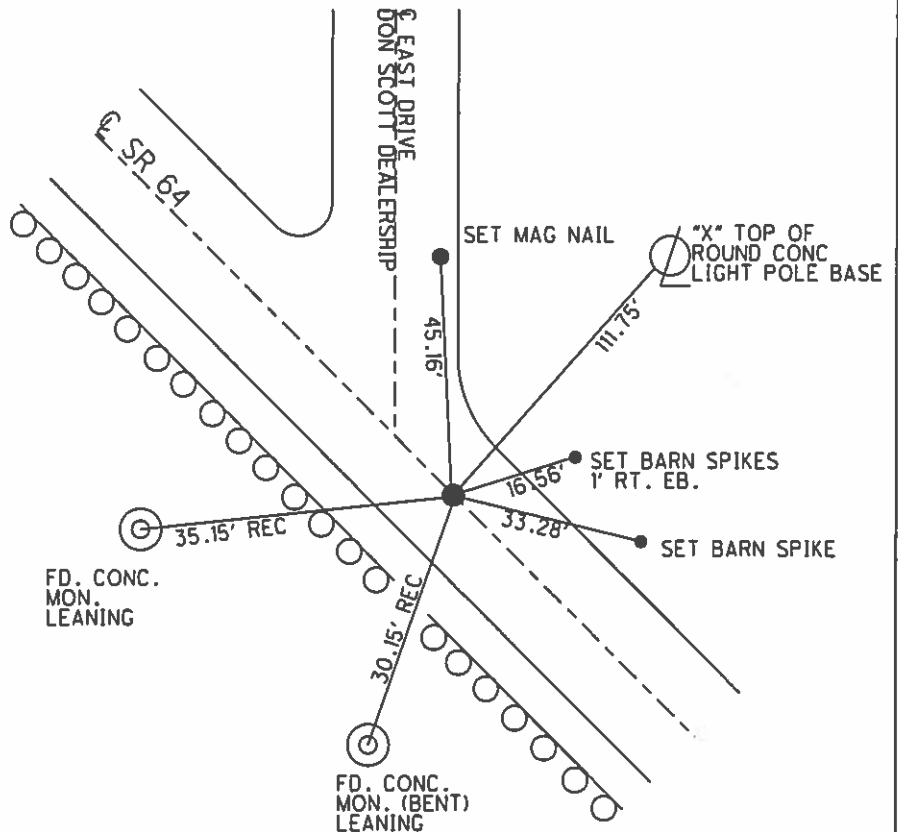


Grid: Northing: 675984.3842 Easting: 1618383.5623

RECORD:
 P.I. $\Delta=0^{\circ}08'30''$ RT

SET MAG/WASHER
 12-12-02, DCH

FD MAG/WASHER
 GPS, REF20
 5-21-15, JFO



O.D.O.T. DISTRICT 2 SURVEY OFFICE

PERSONNEL

REFERENCE NO. 20

SHEET 23 OF 47

NOTES ROUSOS

DATE 5-21-02

ROUTE S.R. 64

H.C. HOMAN

WEATHER SUNNY

COUNTY LUCAS

R.C. MICHALAK

TEMP. 50

TOWNSHIP WATERVILLE

SECTION 1

T 6 N R 5 E

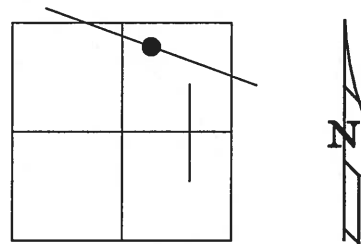
TYPE MONUMENT Small RR SPIKE

ON SURFACE - ~~BELOW~~ YES

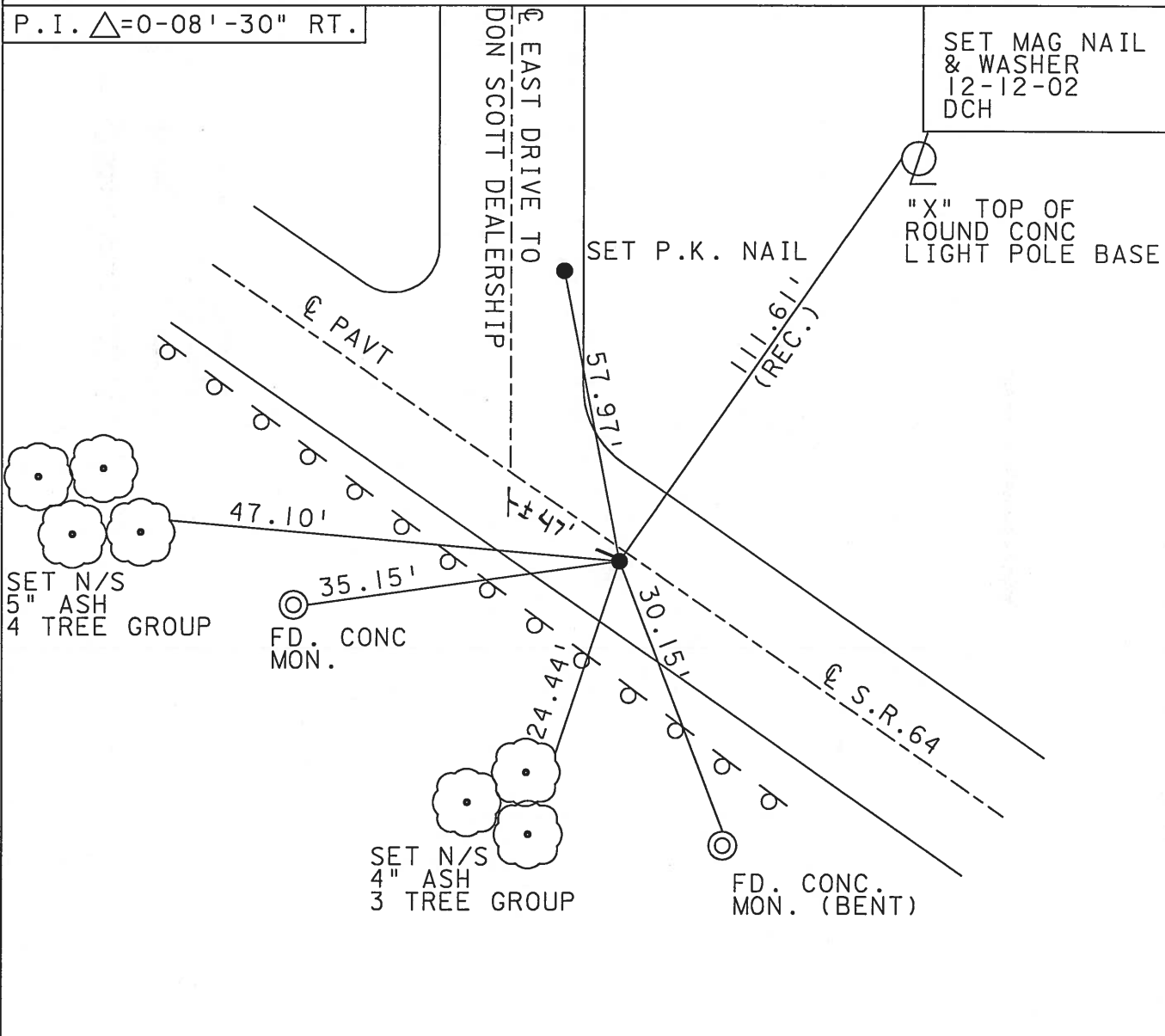
LEFT - ~~Q~~ PAVT - ~~RIGHT~~ 2.8'

7.1' TO LT. EDGE PAVEMENT

S.L.M. 191+00



P.I. $\Delta = 0-08'-30''$ RT.



O.D.O.T. DISTRICT 2 SURVEY OFFICE

PERSONNEL _____

REFERENCE NO. 20

SHEET 22 OF 49

NOTES LOEHRKE

H.C. STONE

R.C. CURTIS

DATE 8-12-91

WEATHER Clear

TEMP. +75

ROUTE S.R. 64

COUNTY LUCAS

TOWNSHIP WATERVILLE

SECTION 1

T6 N R 5 E

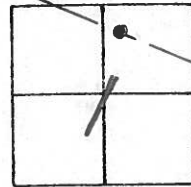
TYPE MONUMENT Sm RR Spike Set P.K. NAIL

ON SURFACE - BELOW Yes

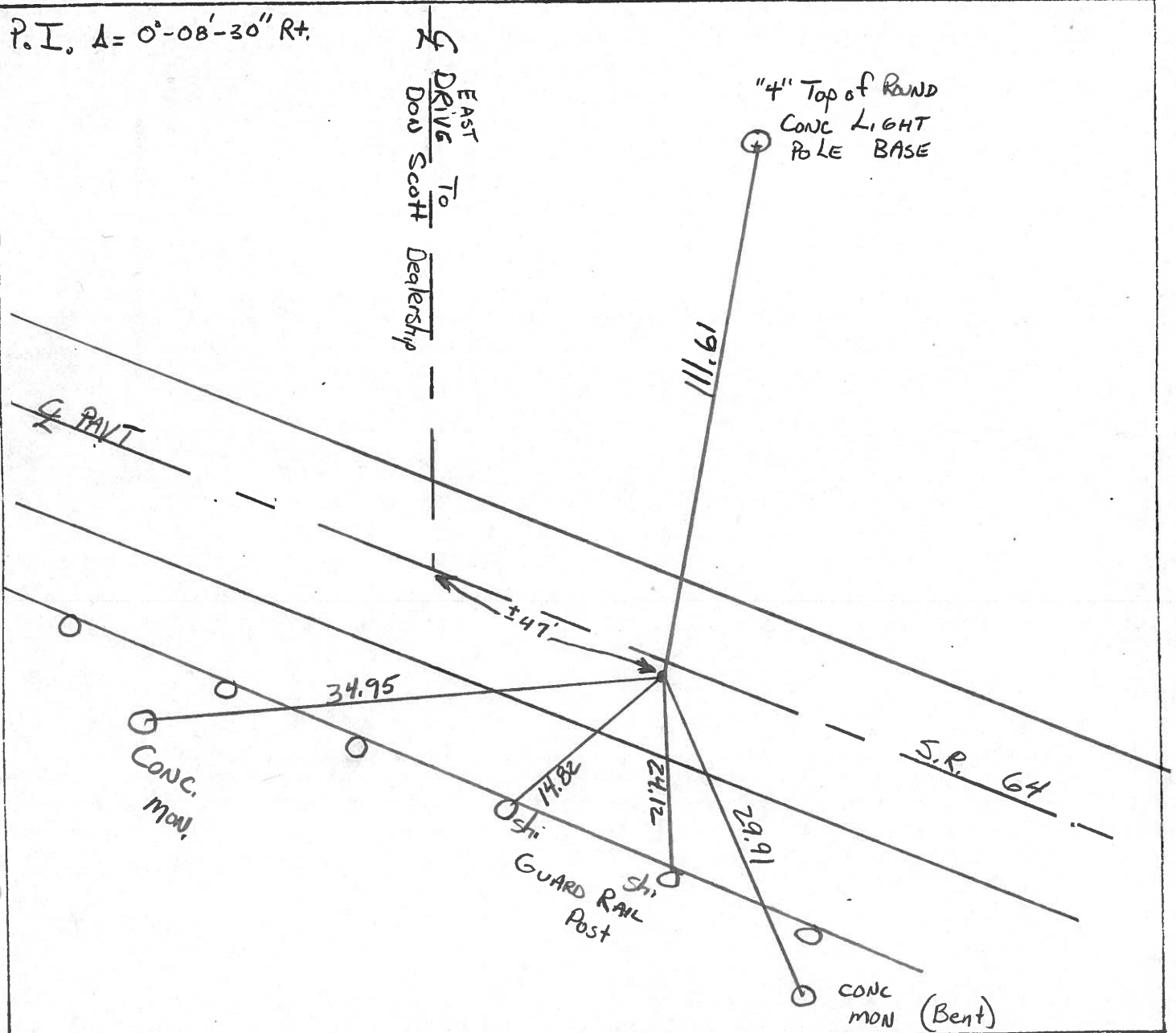
LEFT- & PAV'T. - RIGHT 2.0

7.1 TO Lt EDGE PAVEMENT

S.L.M. 191+70



P.I. $\Delta = 0^{\circ}-08'-30''$ Rt.



County LUCAS S.R. 64

Township WATERVILLE

Section 1

T6N, R5E

Personnel S. Hoffman

C. Luchrke

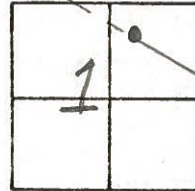
J. Householder

#20

Date 5-22-81

Weather CLEAR

Temp. 70°



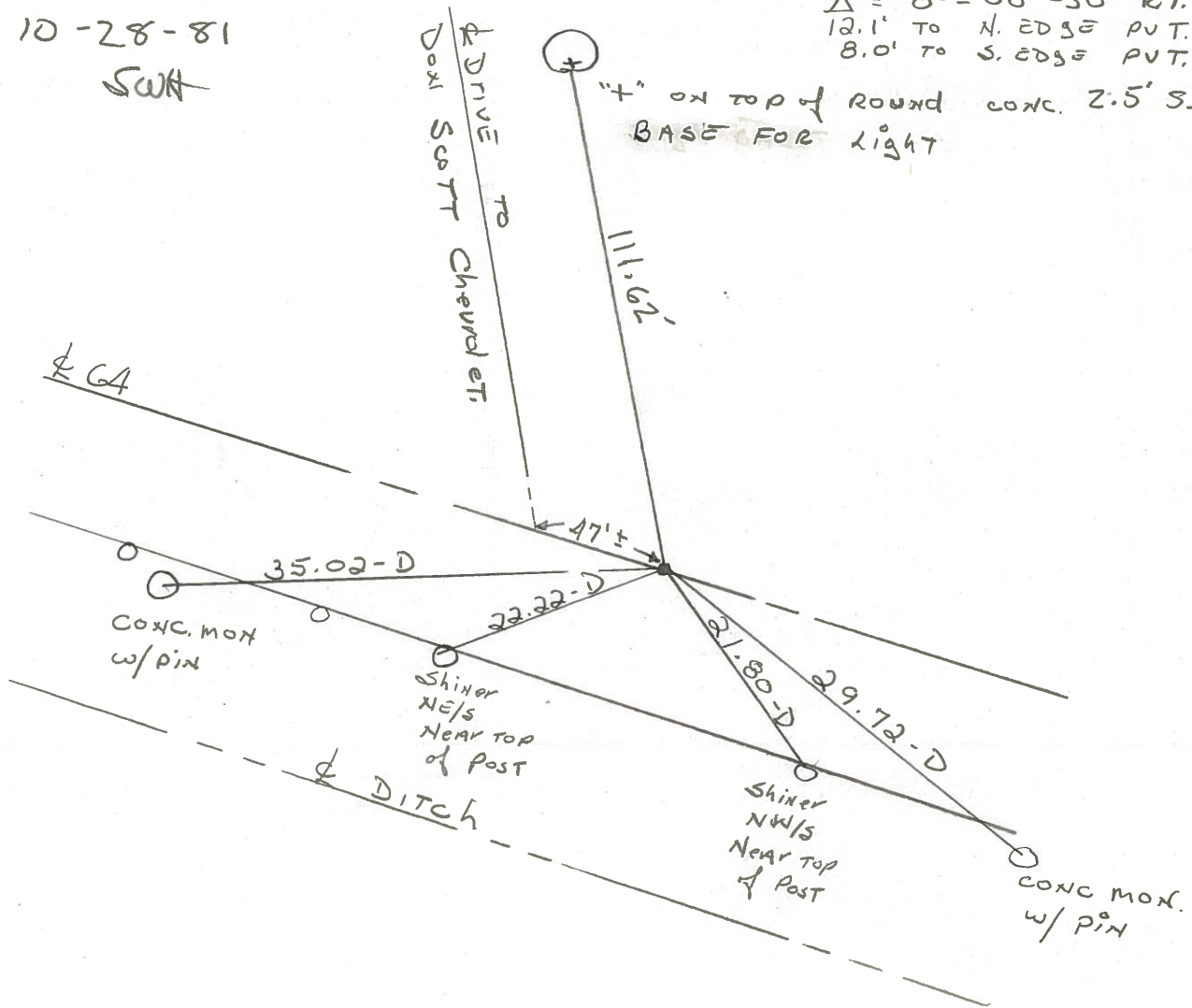
SET SMALL R.R. SPK.

10-28-81

SWH

Fd. SMALL R.R. SPK @
SURFACE
 $\Delta = 0^\circ - 08' - 30''$ RT. (REC)
 12.1' TO N. EDGE PVT.
 8.0' TO S. EDGE PVT.

"4" ON TOP of ROUND CONC. 2.5' S. of E
BASE FOR LIGHT



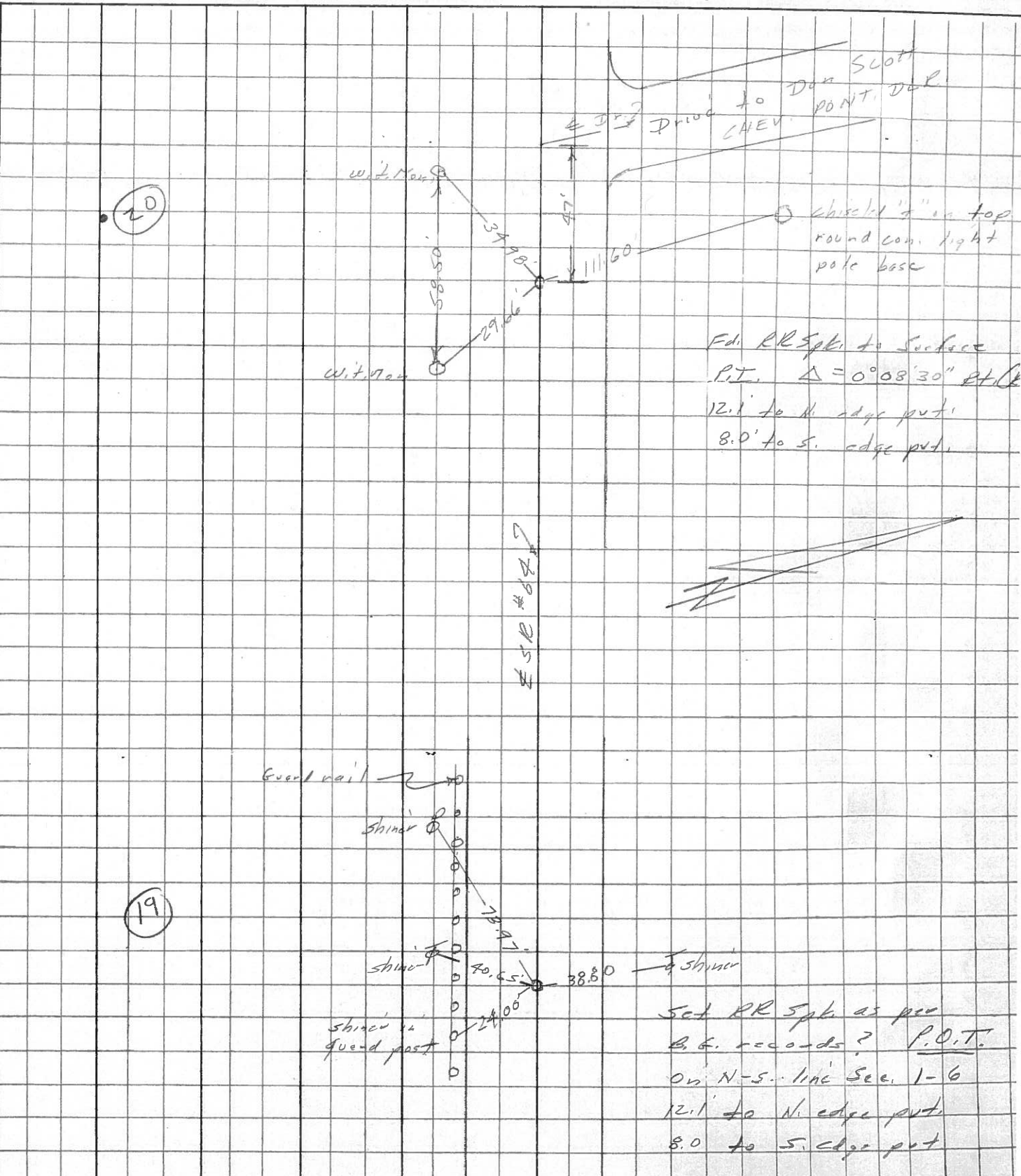
PERSONNEL TITLE PERSONNEL TITLE
 Stone _____
 & _____
 Cucco _____

COUNTY Lucas DATE 1 April, 77

S. R. 67 WEATHER Cloudy

SEC. Watoull to Whitehse TEMP. 42°

DESCRIPTION References to Control Points JOB NO. _____



PERSONNEL TITLE PERSONNEL TITLE

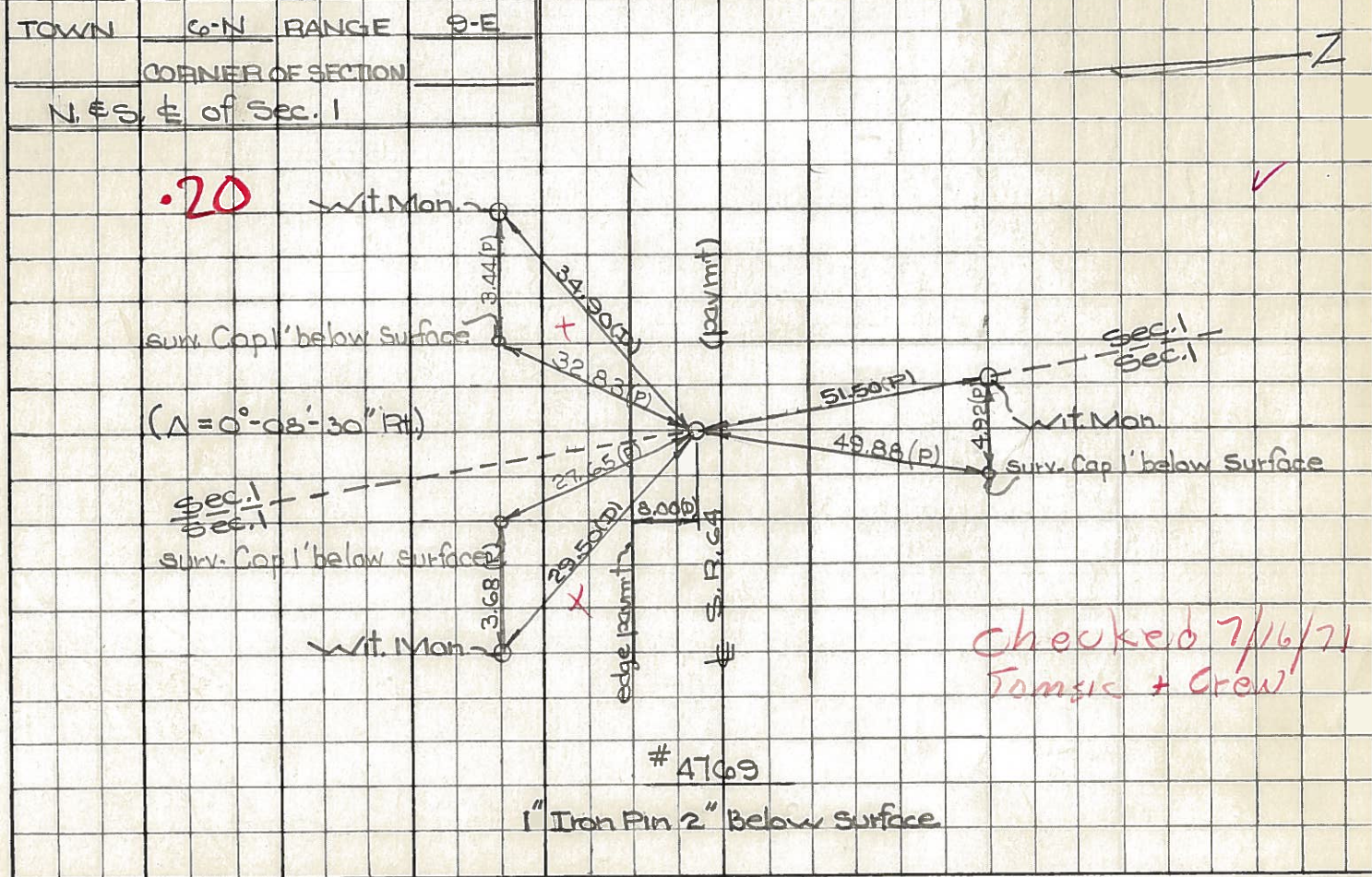
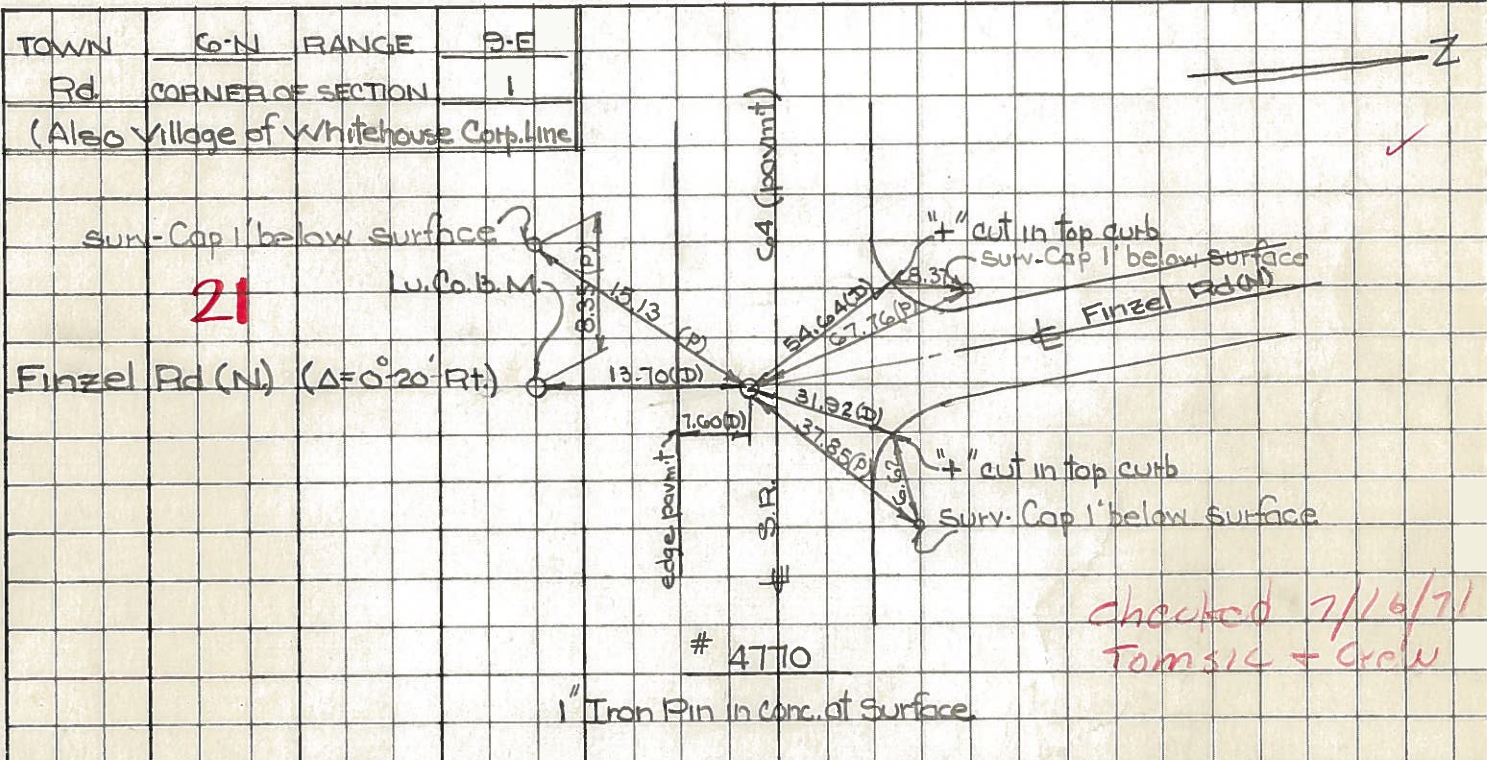
COUNTY Lucas DATE July 31, 1968

D. Curtis
J. Teal

S. R. Co4 WEATHER mild

SEC. TEMP. 75°±

DESCRIPTION S.R. Co4 - Ref. Mon. & Control Points JOB NO. 02994(0)



PERSONNEL TITLE PERSONNEL TITLE

COUNTY Lucas DATE 24 Feb. 66

Stone

Beck

Brindley

Schroder

S. R. # 64

WEATHER Cool

SEC. Waterville - W.

TEMP. 32°

DESCRIPTION

Refs. To Control Pts.

JOB NO.

LEFT

CENTER LINE

RIGHT

20

#218

N. & S. 1/2 Sec. 1

51.63'

N. To Corn. Wit. Mon. (D)

Sta. 191475.05

29.49'

S.E. To Corn. Wit. Mon. (D)

$\Delta = 0^\circ 08' 30''$ Rt.

37.91'

S.W. To Corn. Wit. Mon. (D)

Fd. 1" I. Pin

~~12.86'~~

S. To Shiner in Guard Post (D)

~~2" Below Surface~~

21

#217

Int. Einzel Rd. N.

~~23.55'~~

~~S.W. To Shiner in Guard Post (D)~~

Sta. 197+15.63

59.07'

~~N.W. To Shiner in P.P. (D)~~

$\Delta = 0^\circ 20'$ Rt.

31.93'

N.E. To "+" on Corn. Curb (D)

Fd. 1" I. Pin To Surface

61.33'

~~N.W. To "+" on Corn. Curb (D)~~

~~N.E. To Shiner in T.P. (D)~~

S. To C. B. M.

22

#216

Int. Einzel Rd. S.

61.26'

S.E. To Shiner in P.P. (D)

Fd. R.R. Spk.

~~50.19' OK~~

~~S.E. To "+" Cut on Corn. Curb (D) OK~~

To Surface

61.39'

E.S.E. To Shiner in End Guard Post (D)

30.05'

~~W.S.W. To Shiner in End Guard Post (D)~~

S.W. "+" Cut on Corn. Curb

P.I. 200' E. Int.

Cemetery Rd.

24

#215

Int. Cemetery Rd.

60.55'

N.E. To Shiner in T.P. (D)

Fd. R.R. Spk.

45.88'

S.S.W. To Corn. Wit. Mon. (D)

To Surface

37.96'

S.E. To "+" Cut on Corn. Curb (D)

66.06'

N.N.W. To Shiner in P.P. (D)

50.83'

N.W. To Corn. Wit. Mon. (D)

27

N. & S. 1/2 Sec. 35

32.50'

N. To Shiner in P.P. (D)

239+89.70 $\Delta = 0^\circ 01'$ Rt.

42.84'

N.N.W. To "+" Cut on End Sidewalk (D)

Fd. 1" I. Pin To Surface

35.52'

S.S.W. To Corn. Wit. Mon.