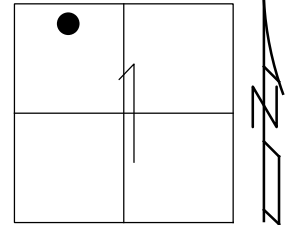


O.D.O.T. DISTRICT 2 SURVEY OFFICE (USE ONLY)

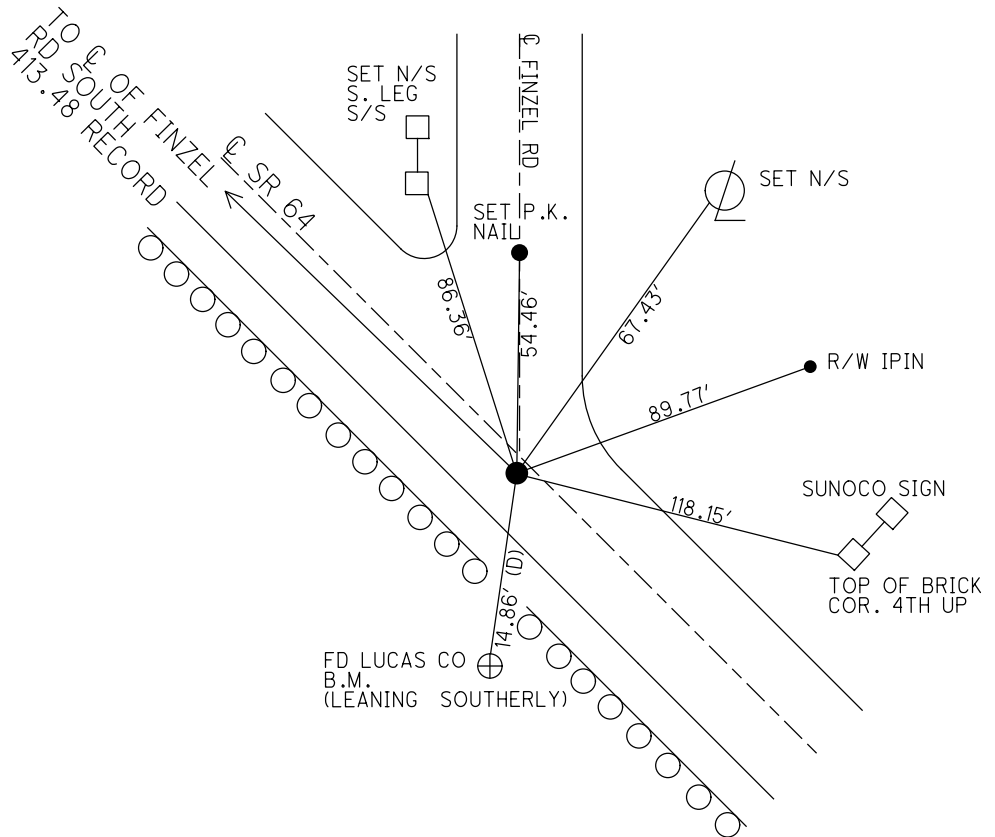
PERSONNEL _____ REFERENCE NO. 21 SHEET 10 OF 50
 NOTES RHOADES DATE 5-21-15 ROUTE SR 64
 H.C. O'DONNELL WEATHER CLOUDY COUNTY LUCAS
 R.C. RHOADES TEMP. 60°F TOWNSHIP WATERVILLE
 SECTION 1
 T 6 N R 9 E

TYPE MONUMENT MAG/WASHER
 ON SURFACE - ~~BELOW~~ ON
 LEFT - ☉ PAV'T - ~~RIGHT~~ 3.5'
6.5' TO LT EDGE PAVEMENT
 S.L.M. 198+08.05
 Grid: Northing: 676247.187 Easting: 1617691.3621



RECORD:
 P.I. Δ=0°20' RT
 SET MAG/WASHER
 12-12-02, DCH
 FD MAG/WASHER
 GPS, REF21
 5-21-15, JMR

NOTE: NEW ROUND ABOUT CONSTRUCTED



O.D.O.T. DISTRICT 2 SURVEY OFFICE

PERSONNEL

REFERENCE NO. 21

SHEET 24 OF 47

NOTES ROUSOS

DATE 5-21-02

ROUTE S.R. 64

H.C. HOMAN

WEATHER SUNNY

COUNTY LUCAS

R.C. MICHALAK

TEMP. 52

TOWNSHIP WATERVILLE

SECTION _____

T ___ R ___

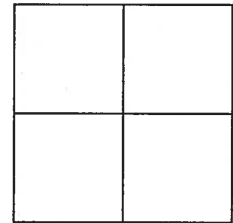
TYPE MONUMENT _____ P.K. NAIL _____

ON SURFACE - ~~BELOW~~ _____ YES _____

LEFT - ~~Q~~ PAVT - ~~RIGHT~~ _____ 3.5' _____

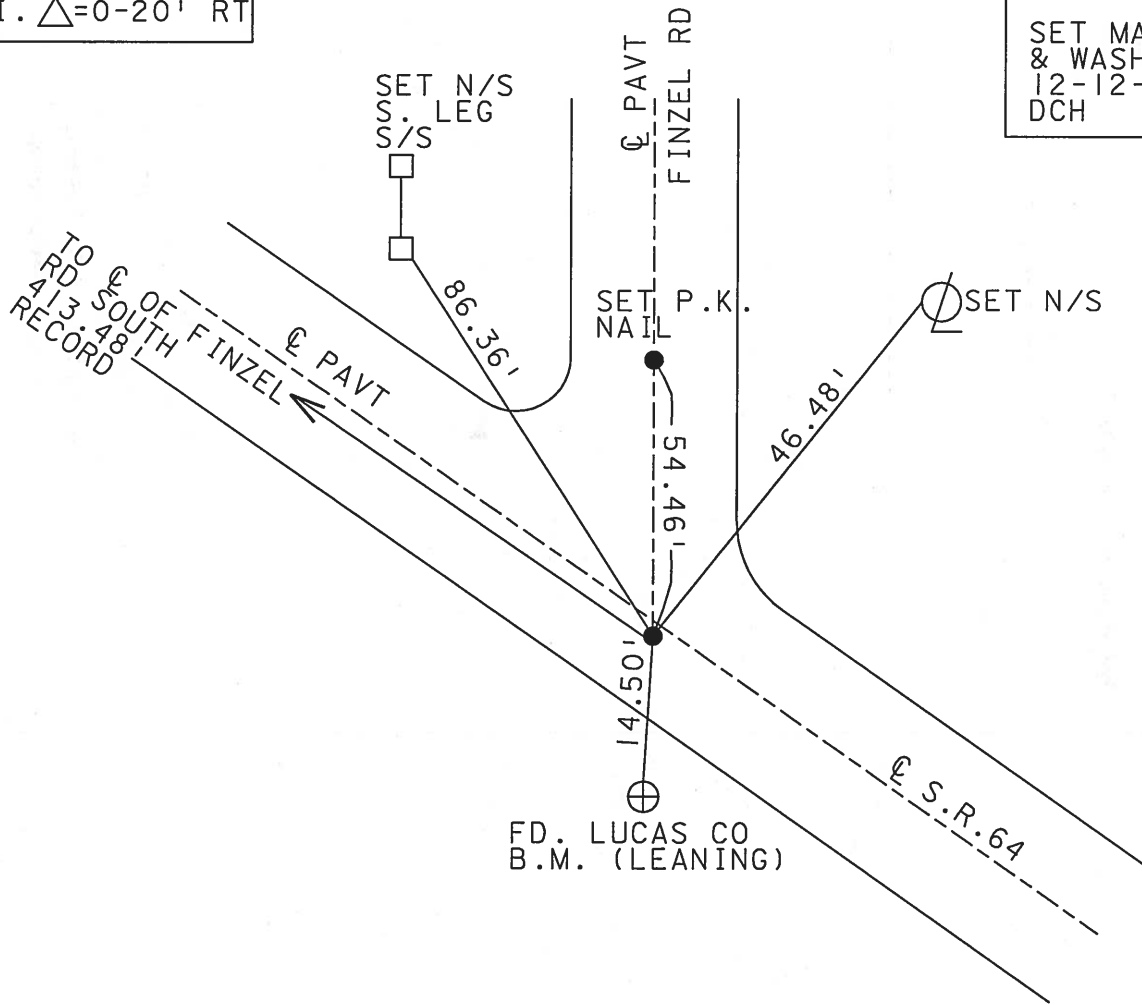
6.5' TO LT. EDGE PAVEMENT

S.L.M. _____ 198+40 _____



P.I. $\triangle = 0-20'$ RT

SET MAG NAIL & WASHER
12-12-02
DCH



O.D.O.T. DISTRICT 2 SURVEY OFFICE

PERSONNEL

REFERENCE NO. 21

SHEET 23 OF 49

NOTES LOEHRKE

H.C. CURTIS

R.C. Luce

DATE 8-9-91

WEATHER Clear

TEMP. +75

ROUTE S.R. 64

COUNTY LUCAS

TOWNSHIP WATERVILLE

SECTION _____

T _____ R _____

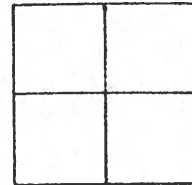
TYPE MONUMENT P.R. NAIL - Set P.R. Nail

ON SURFACE - BELOW - Yes 3-492

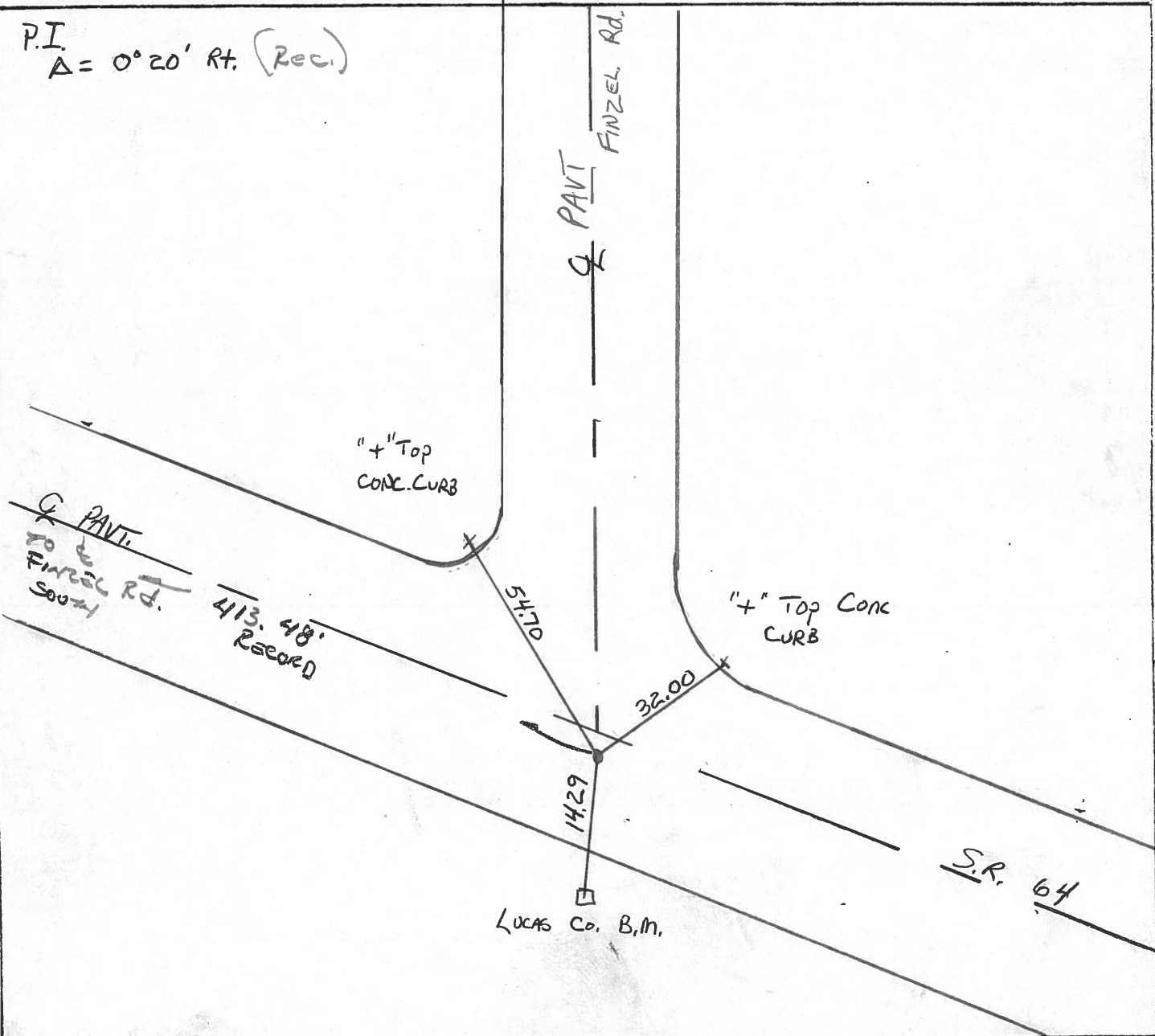
LEFT- & PAV'T. - RIGHT 3.5

65 TO LT EDGE PAVEMENT

S.L.M. 199 +11



P.I.
 $\Delta = 0^{\circ}20' \text{ Rt. (Rec.)}$



County LUCAS S.R. 64

Date 5-22-81

Township WATERVILLE

Weather clear

Section 1

Temp. 75°

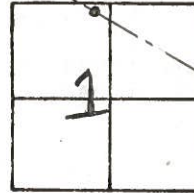
T6N, R5E

Personnel S. Hoffmann

C. Loehrke

D. Householder

21



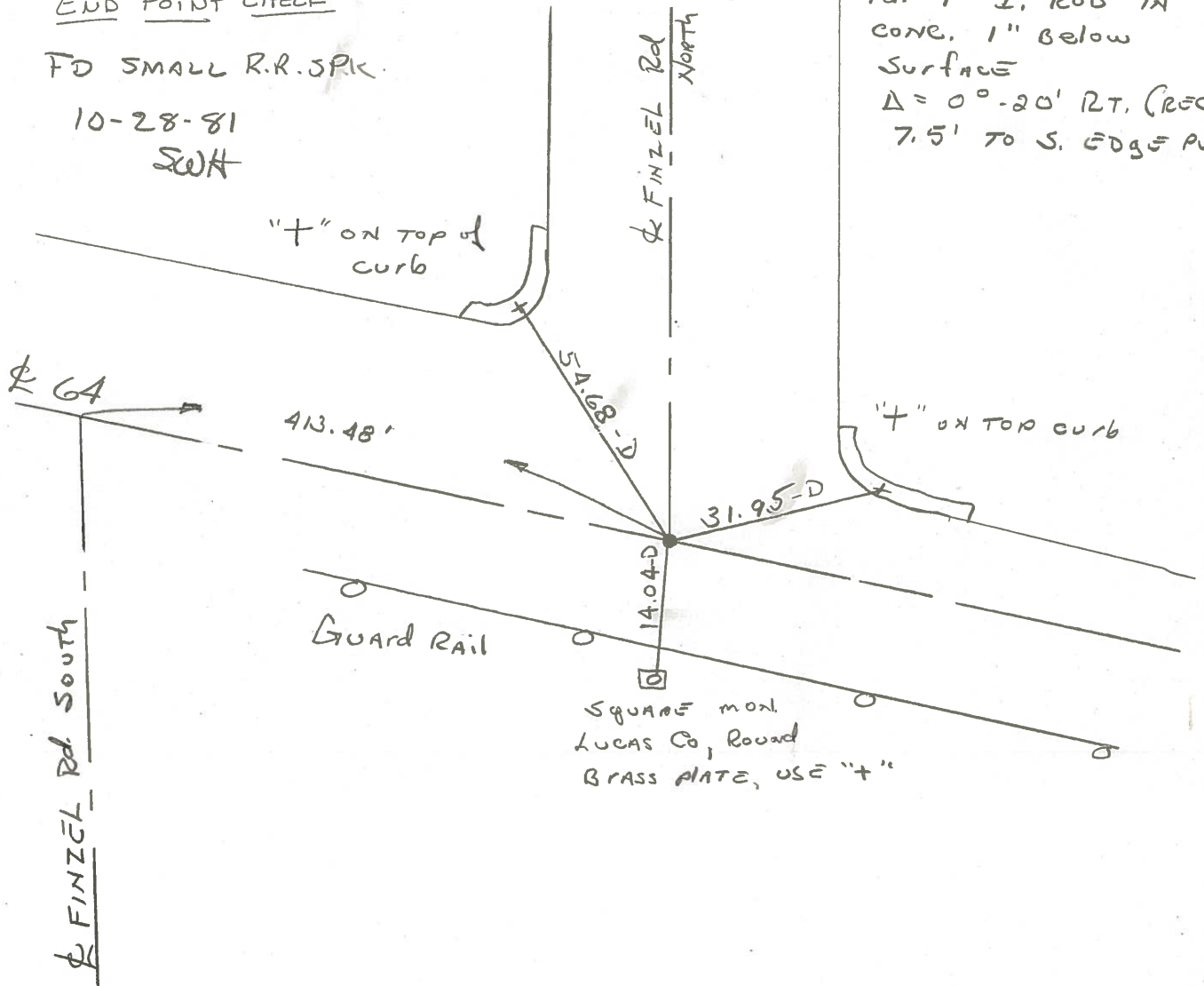
END POINT CHECK

FD SMALL R.R. SPK.

10-28-81

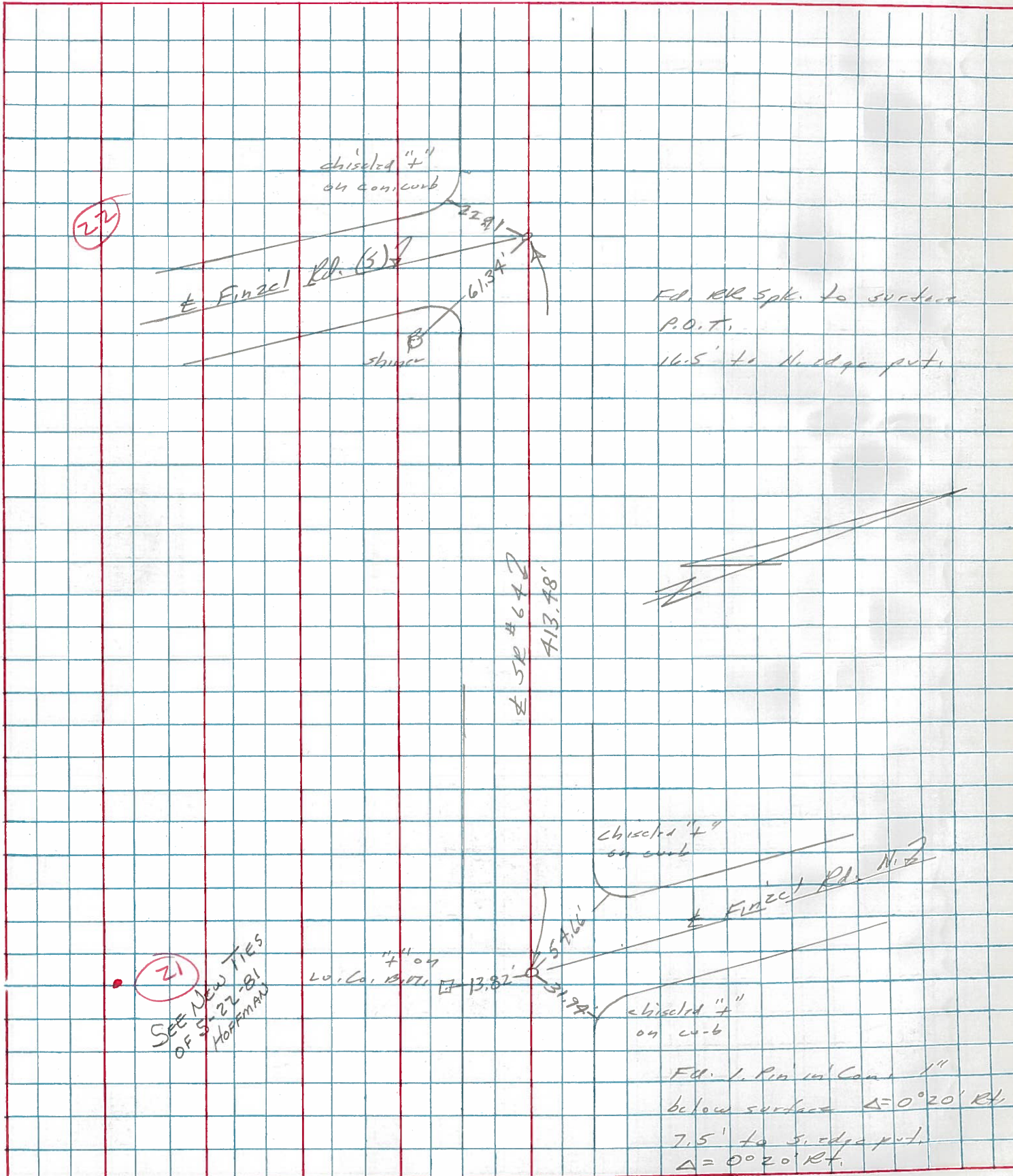
SWH

Fd. 1" I. ROD IN
 CONE. 1" BELOW
 SURFACE
 $\Delta = 0^\circ - 20'$ RT. (REC)
 7.5' TO S. EDGE PUT.



PERSONNEL	TITLE	PERSONNEL	TITLE	COUNTY	DATE	S. R.	WEATHER	TEMP.
Stone				Lucas	1 April 77	67	Cloudy	47°
E								
Crew								

DESCRIPTION References to Control Points JOB NO. _____



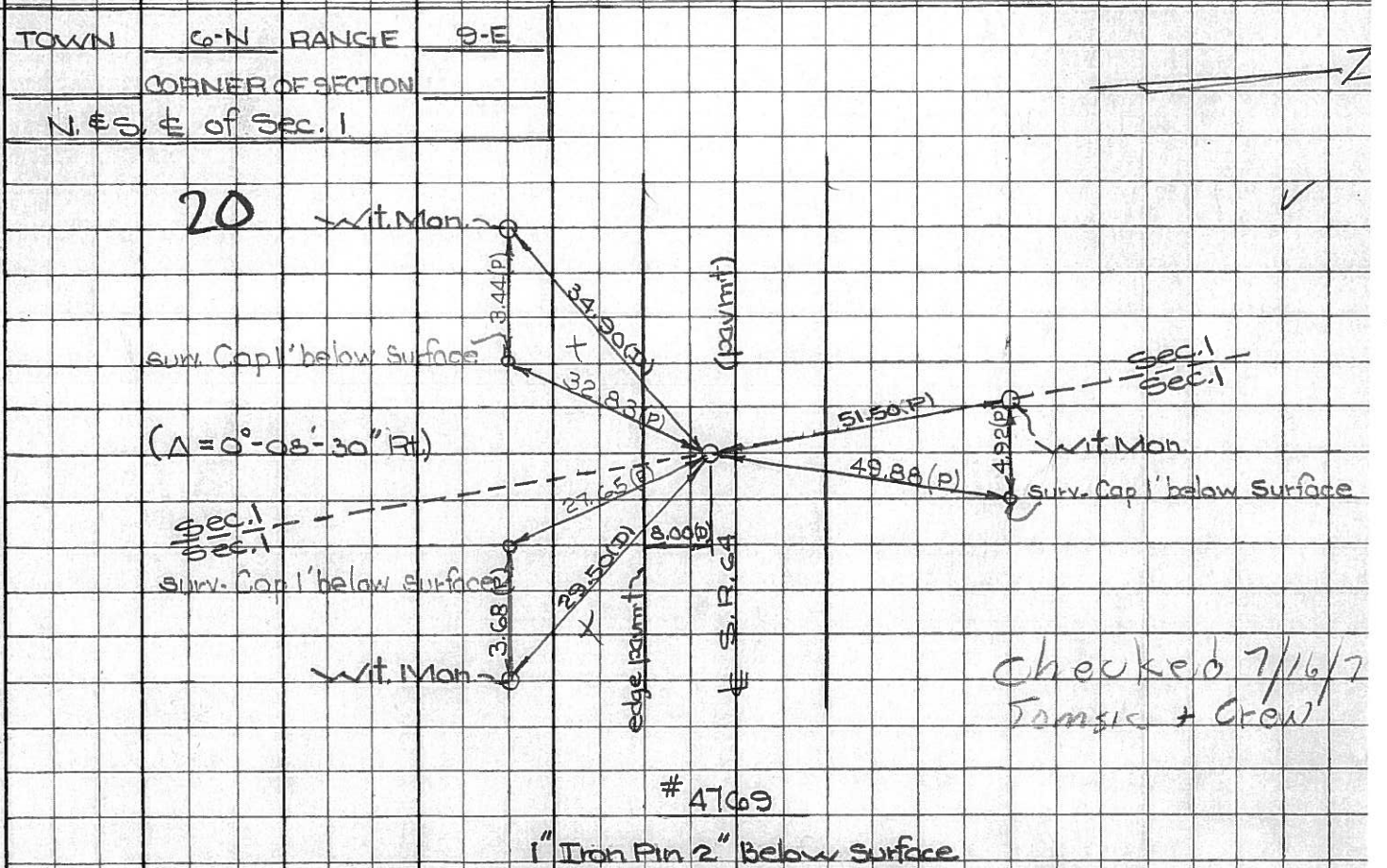
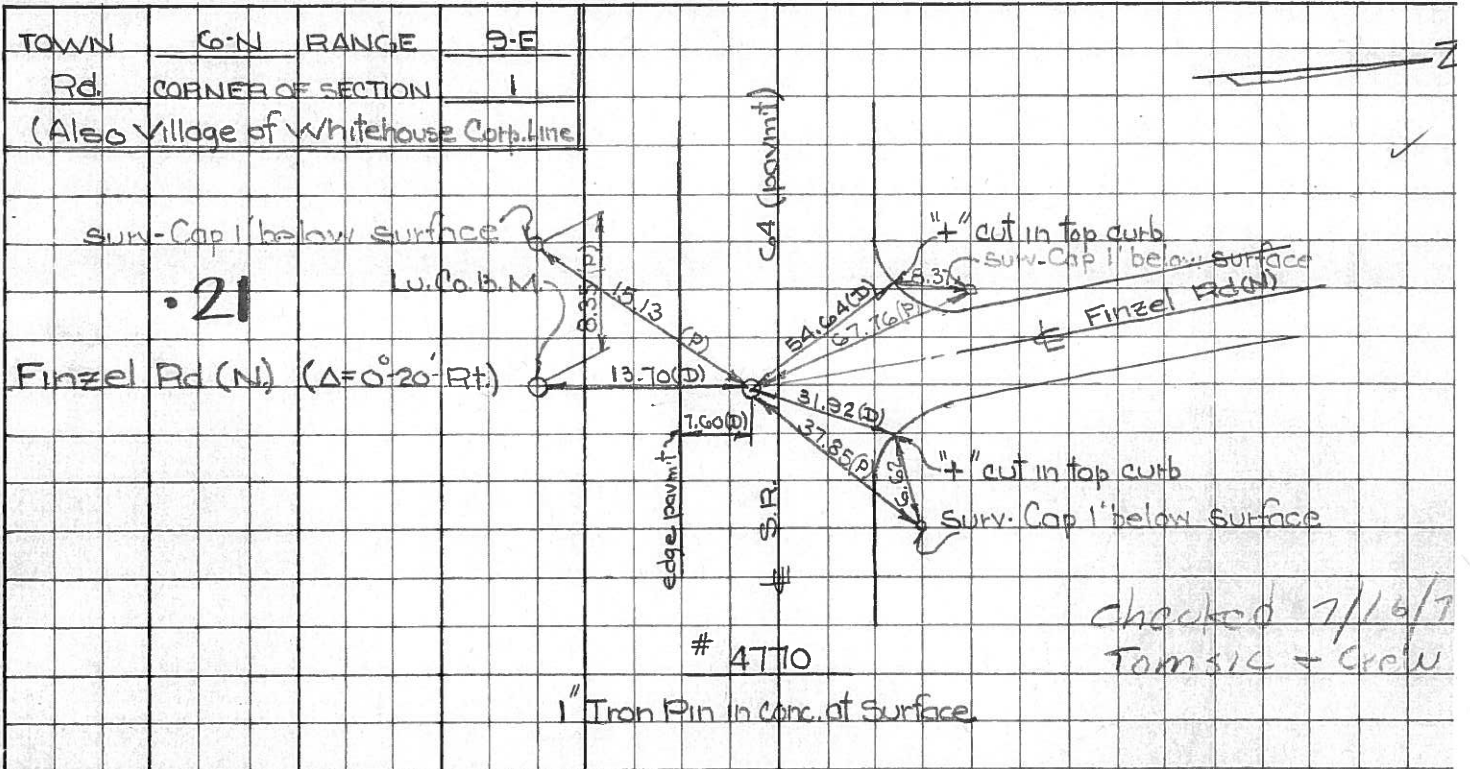
PERSONNEL TITLE PERSONNEL TITLE
 D. Curtis _____
 J. Teal _____

COUNTY Lucas DATE July 31, 1966

S. R. Co4 WEATHER mild

SEC. _____ TEMP. 75°±

DESCRIPTION S.R. Co4 - Ref. Mon. & Control Points JOB NO. 02994(0)



PERSONNEL TITLE PERSONNEL TITLE

COUNTY Lucas DATE 24 Feb. 66

Stone

Beck

Brindley

Schroder

S. R. # 64

WEATHER Cool

SEC. Waterville - W.

TEMP. 32°

DESCRIPTION

Refs. To Control Pts.

JOB NO.

LEFT

CENTER LINE

RIGHT

20

#218

N. & S. 1/2 Sec. 1

51.63'

N. To Corn. Wit. Mon. (D)

Sta. 191475.05

29.49'

S.E. To Corn. Wit. Mon. (D)

$\Delta = 0^\circ 08' 30''$ Rt.

37.91'

S.W. To Corn. Wit. Mon. (D)

Fd. 1" I. Pin

~~12.86'~~

S. To Shiner in Guard Post (D)

~~2" Below Surface~~

21

#217

Int. Einzel Rd. N.

~~23.55'~~

~~S.W. To Shiner in Guard Post (D)~~

Sta. 197+15.63

59.07'

~~N.W. To Shiner in P.P. (D)~~

$\Delta = 0^\circ 20'$ Rt.

31.93'

N.E. To "+" on Corn. Curb (D)

Fd. 1" I. Pin To Surface

61.33'

~~N.W. To "+" on Corn. Curb (D)~~

~~N.E. To Shiner in T.P. (D)~~

S. To C. B. M.

22

#216

Int. Einzel Rd. S.

61.26'

S.E. To Shiner in P.P. (D)

Fd. R.R. Spk.

~~50.19' OK~~

~~S.E. To "+" Cut on Corn. Curb (D) OK~~

To Surface

61.39'

E.S.E. To Shiner in End Guard Post (D)

30.05'

~~W.S.W. To Shiner in End Guard Post (D)~~

S.W. "+" Cut on Corn. Curb

P.I. 200' E. Int.

Cemetery Rd.

24

#215

Int. Cemetery Rd.

60.55'

N.E. To Shiner in T.P. (D)

Fd. R.R. Spk.

45.88'

S.S.W. To Corn. Wit. Mon. (D)

To Surface

37.96'

S.E. To "+" Cut on Corn. Curb (D)

66.06'

N.N.W. To Shiner in P.P. (D)

50.83'

N.W. To Corn. Wit. Mon. (D)

27

N. & S. 1/2 Sec. 35

32.50'

N. To Shiner in P.P. (D)

239+89.70 $\Delta = 0^\circ 01'$ Rt.

42.84'

N.N.W. To "+" Cut on End Sidewalk (D)

Fd. 1" I. Pin To Surface

35.52'

S.S.W. To Corn. Wit. Mon.