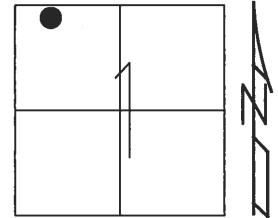


O.D.O.T. DISTRICT 2 SURVEY OFFICE (USE ONLY)

PERSONNEL _____ REFERENCE NO. 22 SHEET 11 OF 50
 NOTES RHOADES DATE 5-21-15 ROUTE SR 64
 H.C. O'DONNELL WEATHER CLOUDY COUNTY LUCAS
 R.C. RHOADES TEMP. 60°F TOWNSHIP WATERVILLE
 _____ SECTION 1
 _____ T 6 N R 9 E

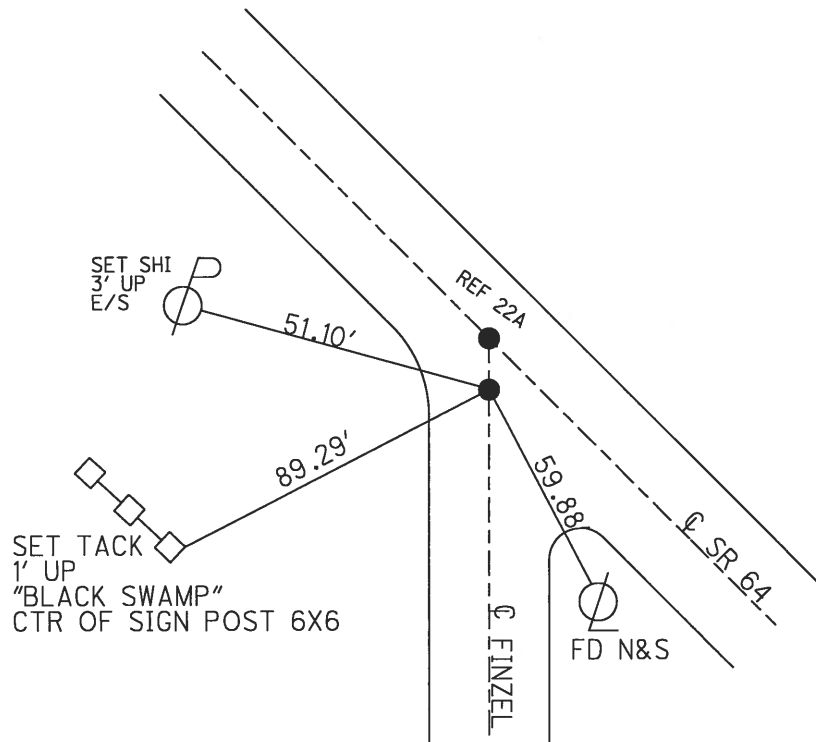
TYPE MONUMENT MAG/WASHER
 ON SURFACE - ~~BELOW~~ ON
 LEFT - ℄ PAV'T - ~~RIGHT~~ 6.7'
 ----- TO ----- EDGE PAVEMENT
 S.L.M. 203+25



Grid: Northing: 676392.5957 Easting: 1617304.4401

RECORD:
 P.O.T.
 SET MAG/WASHER
 12-12-02, DCH
 FD MAG/WASHER
 REF22
 5-21-15, JFO

NOTE: NEW ROUND ABOUT CONSTRUCTED
 DIST. REF22 TO REFA22 =5.75'



O.D.O.T. DISTRICT 2 SURVEY OFFICE

PERSONNEL

REFERENCE NO. 22

SHEET 25 OF 47

NOTES ROUSOS

DATE 5-20-02

ROUTE S.R. 64

H.C. HOMAN

WEATHER SUNNY

COUNTY LUCAS

R.C. MICHALAK

TEMP. 50

TOWNSHIP WATERVILLE

SECTION _____

T ___ R ___

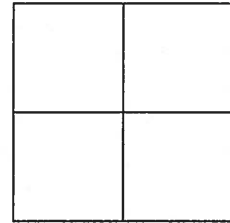
TYPE MONUMENT ^{SMALL} A=RR SPIKE B=PK NAIL

ON SURFACE - ~~BELOW~~ _____ YES _____

LEFT - ~~Q~~ PAVT - ~~RIGHT~~ 6.7' PT.A

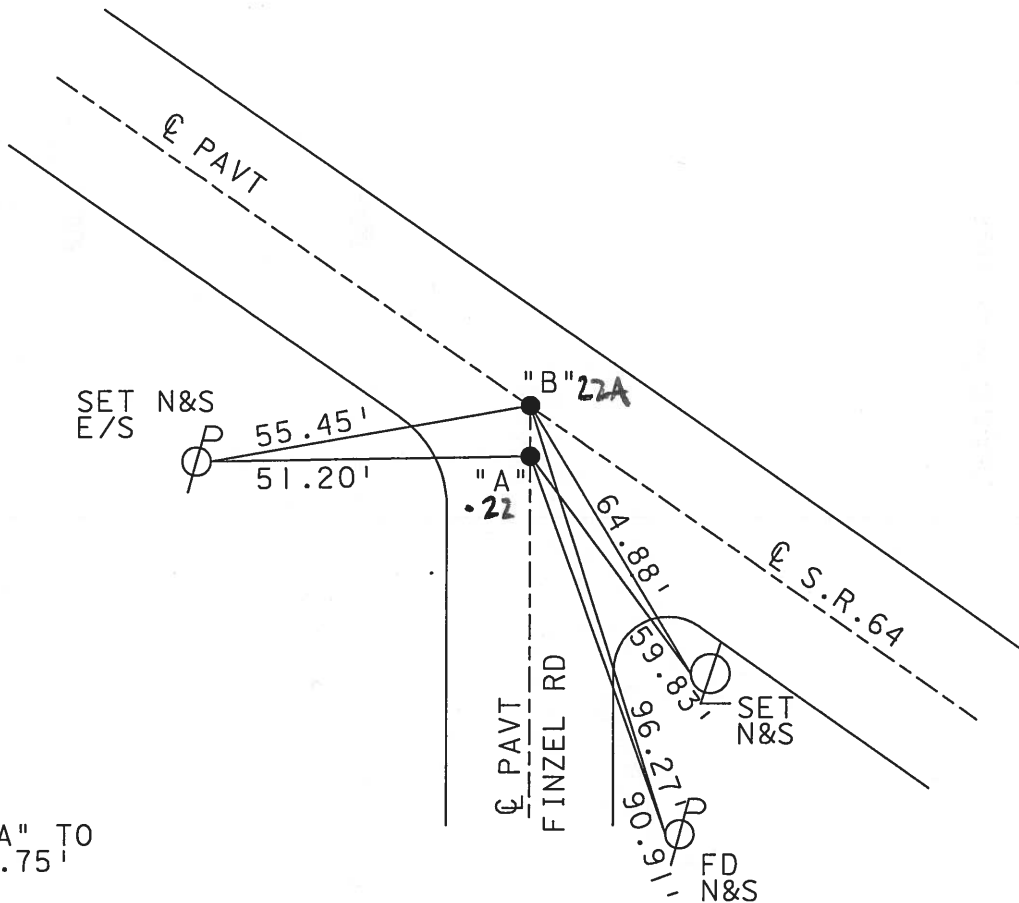
_____ TO _____ EDGE PAVEMENT

S.L.M. _____ 203+25 PT.A



PT: "A" = P.O.T.
PT: "B" = SET BY OTHERS

SET MAG NAIL
& WASHER
12-12-02
DCH



DIST. "A" TO
"B" = 5.75'

O.D.O.T. DISTRICT 2 SURVEY OFFICE

PERSONNEL

REFERENCE NO. 22

SHEET 24 OF 49

NOTES LOEHRKE

H.C. STONE

DATE 8-12-91

ROUTE S.R. 64

R.C. CURTIS

WEATHER Clear

COUNTY LUCAS

TEMP. +75

TOWNSHIP WATERVILLE

SECTION _____

T _____ R _____

TYPE MONUMENT A Sm. R.R. Spike B P.K.

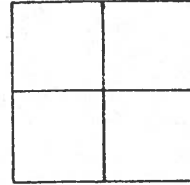
Set P.K. Nails
3-4-92

ON SURFACE - BELOW Yes

LEFT- & PAV'T. - RIGHT 6.7 Pt A

TO EDGE PAVEMENT

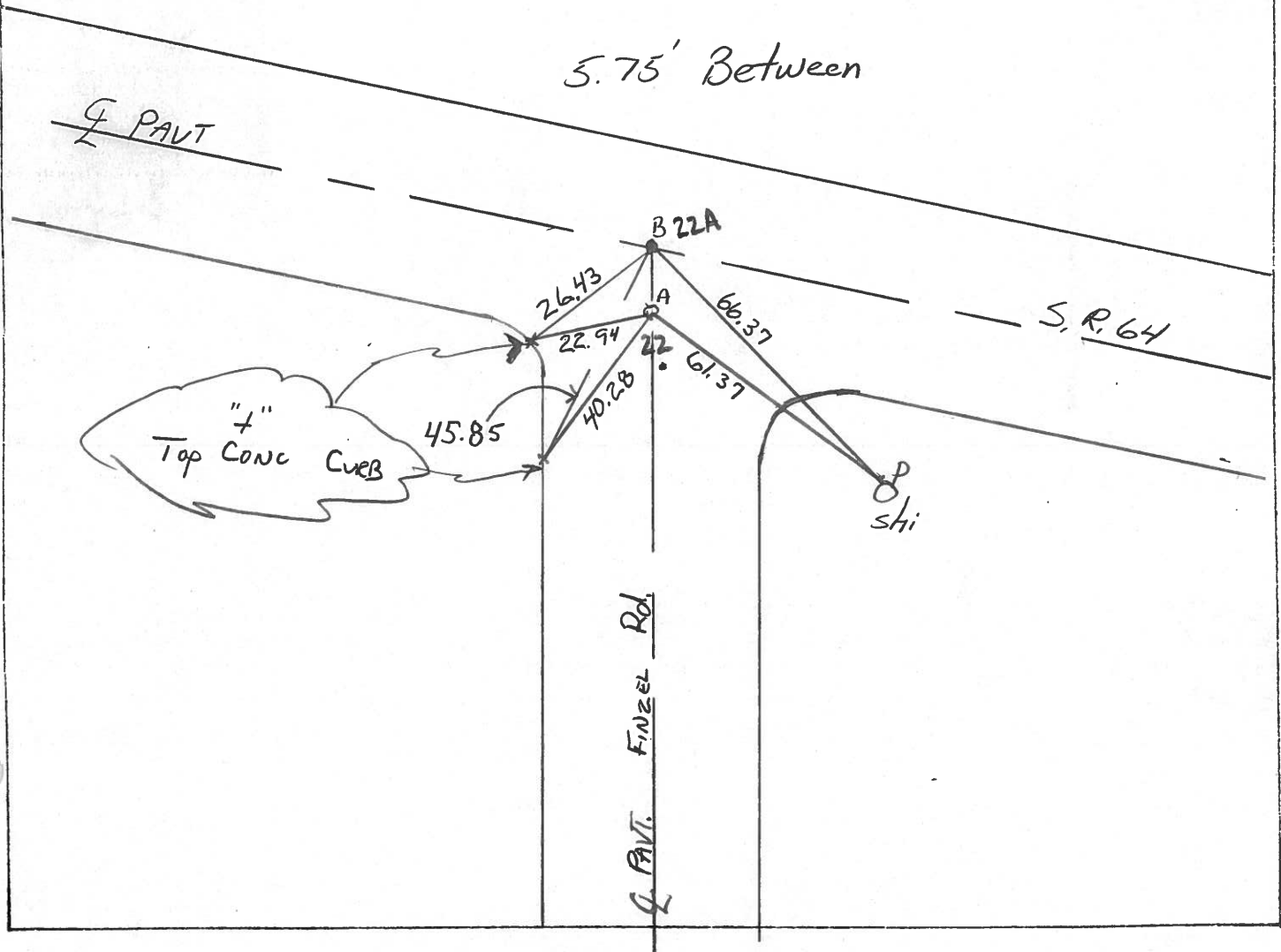
S.L.M. 203+25 - Pt A



Pt. 'A' = P.O.T.

Pt. 'B' set by others

5.75' Between



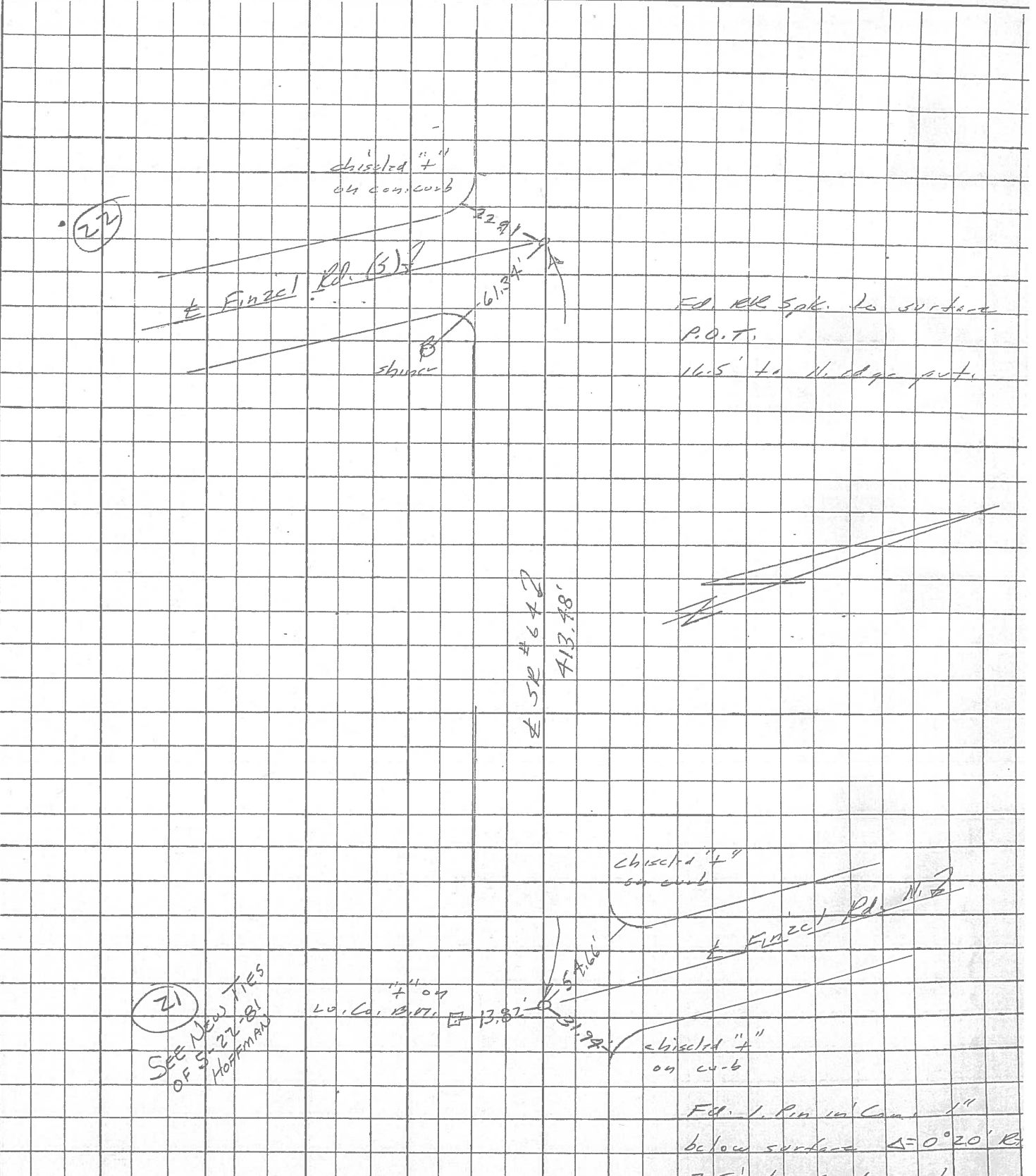
PERSONNEL	TITLE	PERSONNEL	TITLE
<u>Stone</u>			
<u>E</u>			
<u>Crew</u>			

COUNTY Lucas DATE 1 April 77

S. R. 67 WEATHER Cloudy

SEC. Waterville to White TEMP. 44°

DESCRIPTION References to Central Points JOB NO. _____



FD RR Spk. to surface
P.O.T.
16.5' to N. edge put.

(21)
SEE NEW TIES
OF SR 22, 81
HOFFMAN

Fol. 1. Pin in' Cam. 1"
below surface Δ=0°20' R

PERSONNEL TITLE PERSONNEL TITLE

COUNTY Lucas DATE July 31, 1968

D. Curtis

S. R. Co 4

WEATHER mild

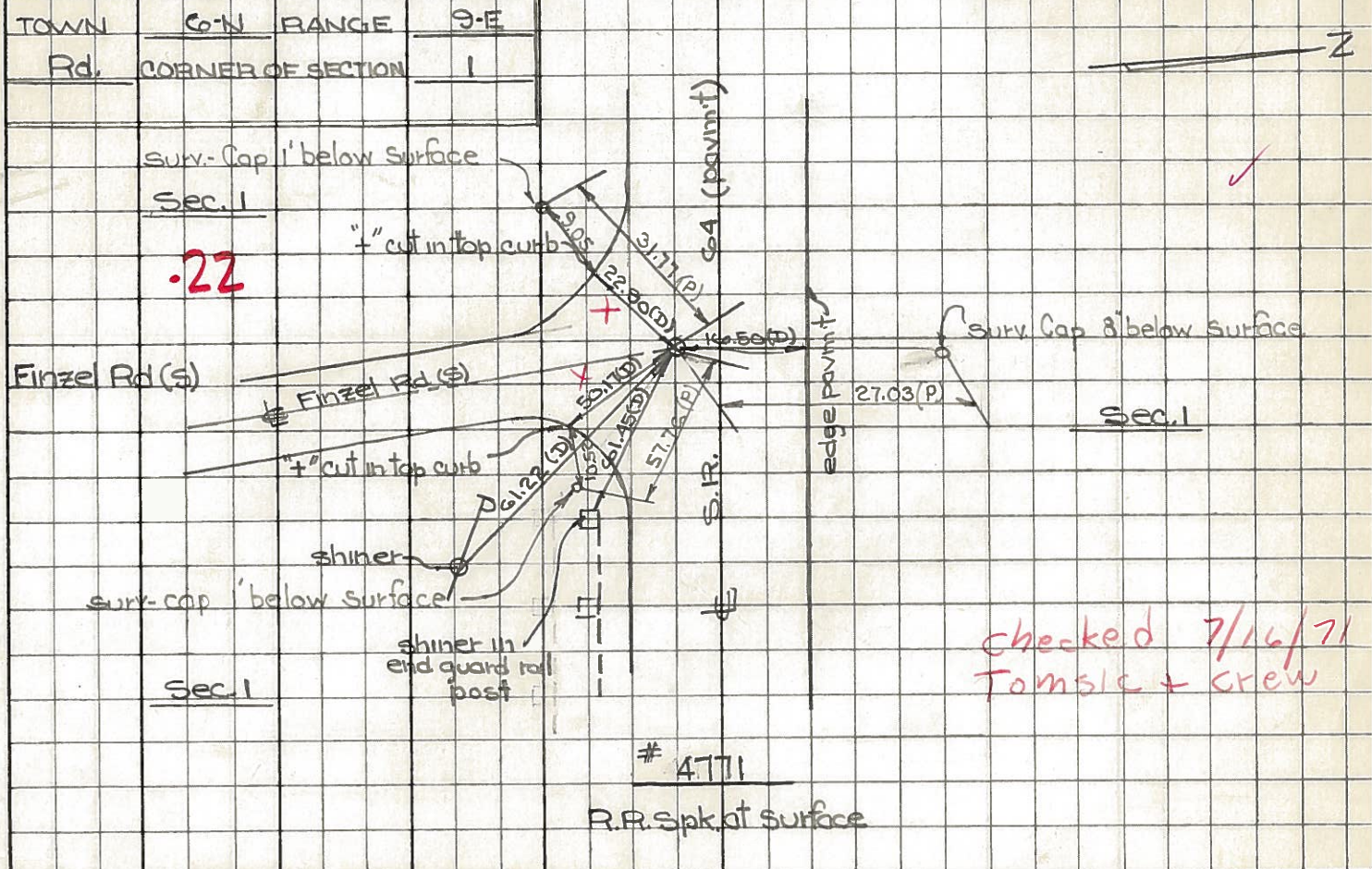
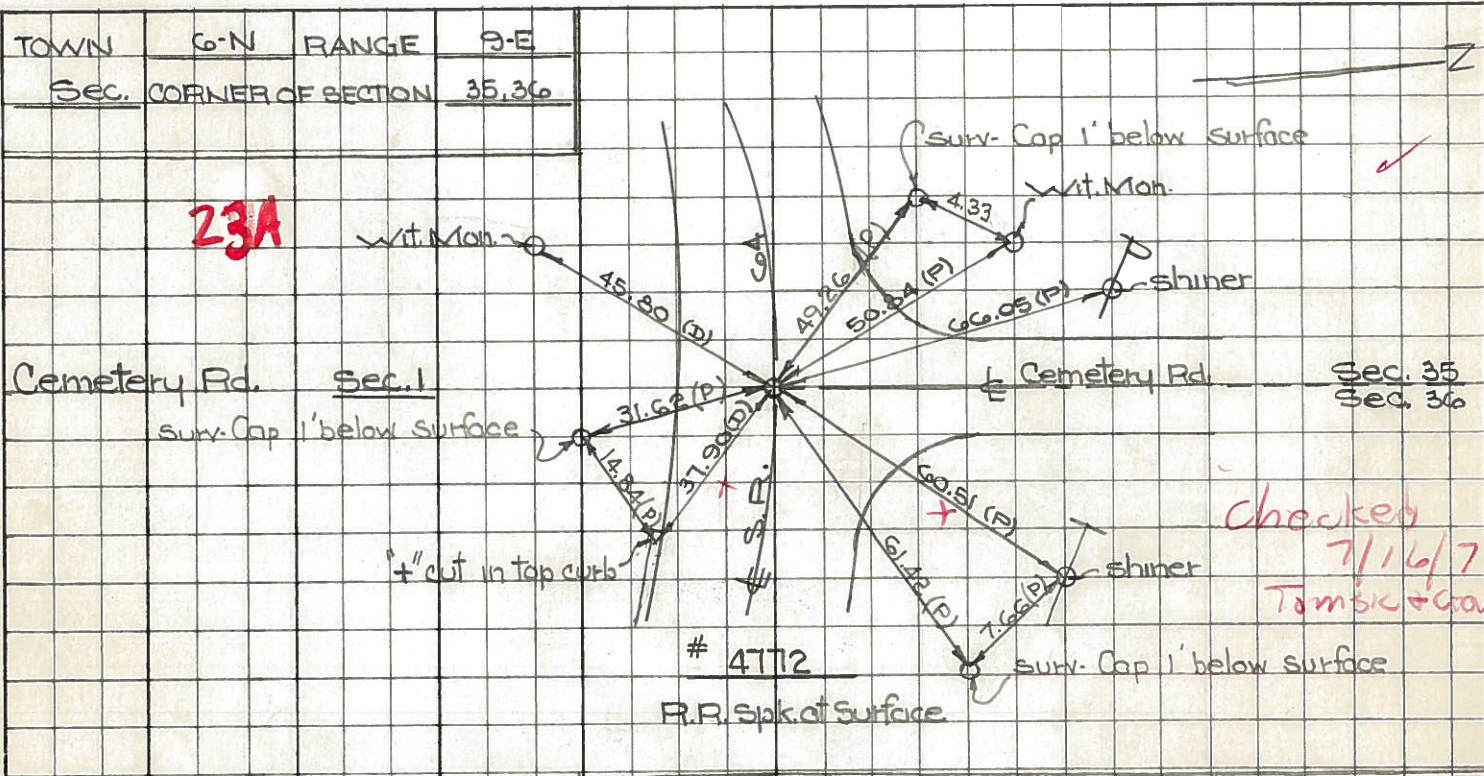
J. Teal

SEC. 028

TEMP. 75°±

DESCRIPTION S.R. Co 4 - Ref. Mon. & Control Points

JOB NO. 02994(0)



PERSONNEL TITLE PERSONNEL TITLE

COUNTY Lucas DATE 24 Feb. 66

Stone

Beck

Brindley

Schroder

S. R. # 64

WEATHER Cool

SEC. Waterville - W.

TEMP. 32°

DESCRIPTION

Refs. To Control Pts.

JOB NO.

LEFT

CENTER LINE

RIGHT

20

#218

N. & S. 1/2 Sec. 1

51.63'

N. To Corn. Wit. Mon. (D)

Sta. 191475.05

29.49'

S.E. To Corn. Wit. Mon. (D)

$\Delta = 0^\circ 08' 30''$ Rt.

37.91'

S.W. To Corn. Wit. Mon. (D)

Fd. 1" I. Pin

~~12.86'~~

S. To Shiner in Guard Post (D)

~~2" Below Surface~~

21

#217

Int. Einzel Rd. N.

~~23.55'~~

~~S.W. To Shiner in Guard Post (D)~~

Sta. 197+15.63

59.07'

~~N.W. To Shiner in P.P. (D)~~

$\Delta = 0^\circ 20'$ Rt.

31.93'

N.E. To "+" on Corn. Curb (D)

Fd. 1" I. Pin To Surface

61.33'

~~N.W. To "+" on Corn. Curb (D)~~

~~N.E. To Shiner in T.P. (D)~~

S. To C. B. M.

22

#216

Int. Einzel Rd. S.

61.26'

S.E. To Shiner in P.P. (D)

Fd. R.R. Spk.

~~50.19' OK~~

~~S.E. To "+" Cut on Corn. Curb (D) OK~~

To Surface

61.39'

E.S.E. To Shiner in End Guard Post (D)

30.05'

~~W.S.W. To Shiner in End Guard Post (D)~~

S.W. "+" Cut on Corn. Curb

P.I. 200' E. Int.

Cemetery Rd.

24

#215

Int. Cemetery Rd.

60.55'

N.E. To Shiner in T.P. (D)

Fd. R.R. Spk.

45.88'

S.S.W. To Corn. Wit. Mon. (D)

To Surface

37.96'

S.E. To "+" Cut on Corn. Curb (D)

66.06'

N.N.W. To Shiner in P.P. (D)

50.83'

N.W. To Corn. Wit. Mon. (D)

27

N. & S. 1/2 Sec. 35

32.50'

N. To Shiner in P.P. (D)

239+89.70 $\Delta = 0^\circ 01'$ Rt.

42.84'

N.N.W. To "+" Cut on End Sidewalk (D)

Fd. 1" I. Pin To Surface

35.52'

S.S.W. To Corn. Wit. Mon.