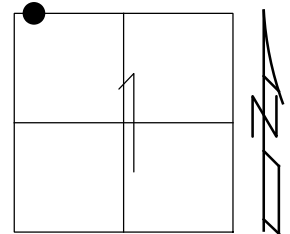


O.D.O.T. DISTRICT 2 SURVEY OFFICE (USE ONLY)

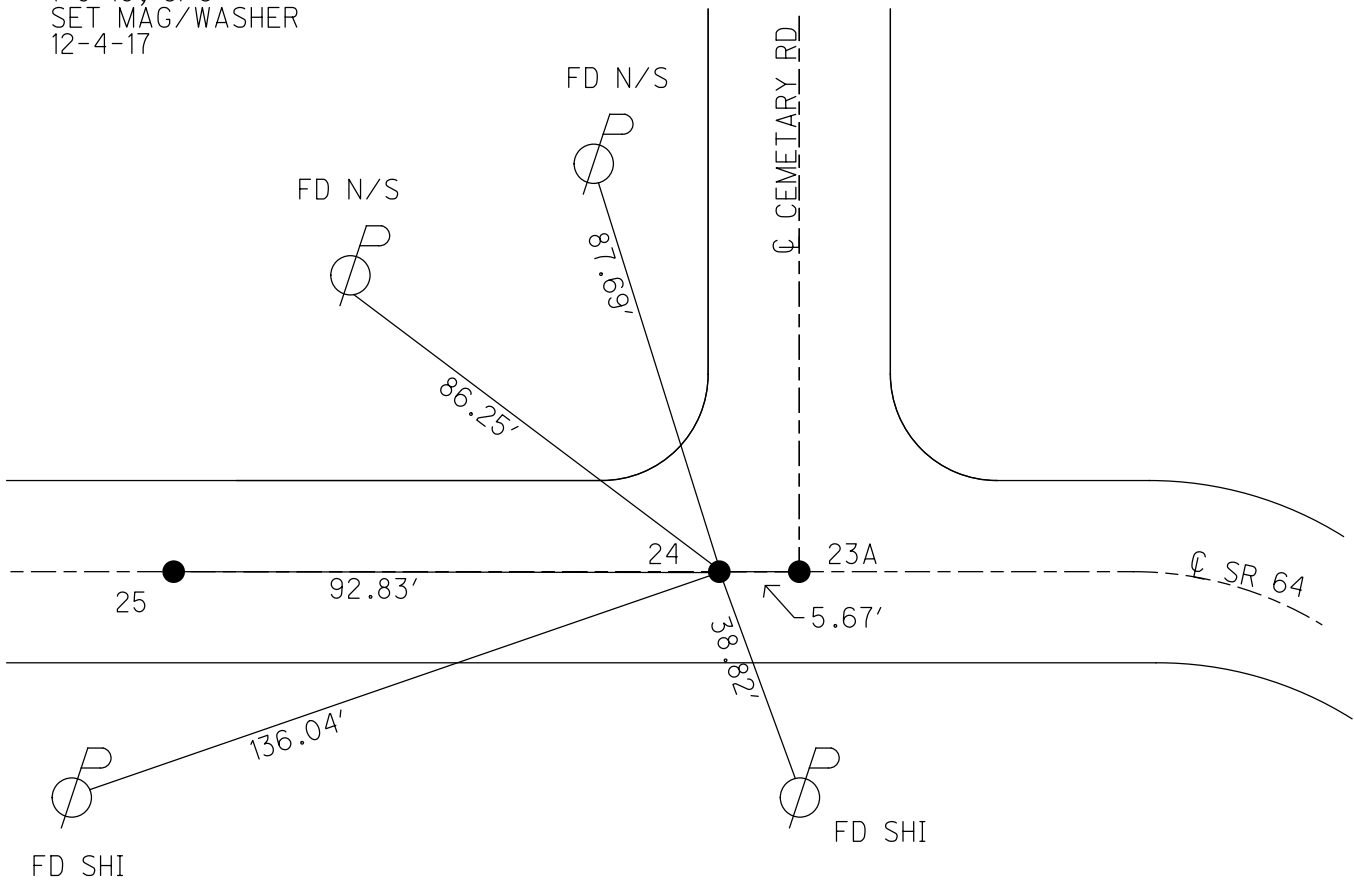
| | | | | | | |
|-----------|------------------|-----------|----------------|-----------|-------------------|-----------|
| PERSONNEL | REFERENCE NO. | <u>24</u> | SHEET | <u>15</u> | OF | <u>50</u> |
| NOTES | <u>RHOADES</u> | DATE | <u>6-16-17</u> | ROUTE | <u>SR 64</u> | |
| H.C. | <u>O'DONNELL</u> | WEATHER | <u>FAIR</u> | COUNTY | <u>LUCAS</u> | |
| R.C. | <u>CARSON</u> | TEMP. | <u>73°</u> | TOWNSHIP | <u>WATERVILLE</u> | |
| | <u>POORE</u> | | | SECTION | <u>1</u> | |
| | | | | T | <u>6</u> | R |
| | | | | | <u>N</u> | <u>9</u> |
| | | | | | <u>E</u> | |

TYPE MONUMENT MAG/WASHER
 ON SURFACE - ~~BELOW~~ ON
 LEFT - ☉ PAV'T - ~~RIGHT~~ 0.2'
 _____ TO _____ EDGE PAVEMENT
 S.L.M. 212+33

Grid: Northing: 676665.15 Easting: 1616343.8609



RECORD:
 SET MAG/WASHER
 12-12-02, DCH
 FD MAG/WASHER
 REF24
 1-5-16, JFO
 SET MAG/WASHER
 12-4-17



O.D.O.T. DISTRICT 2 SURVEY OFFICE

PERSONNEL

REFERENCE NO. ²⁴ & ₂₅

SHEET 27 OF 47

NOTES HOMAN

DATE 5-20-02

ROUTE S.R. 64

H.C. ROUSOS

WEATHER CLOUDY

COUNTY LUCAS

R.C. MICHALAK

TEMP. 50

TOWNSHIP WATERVILLE

SECTION _____

T ___ R ___

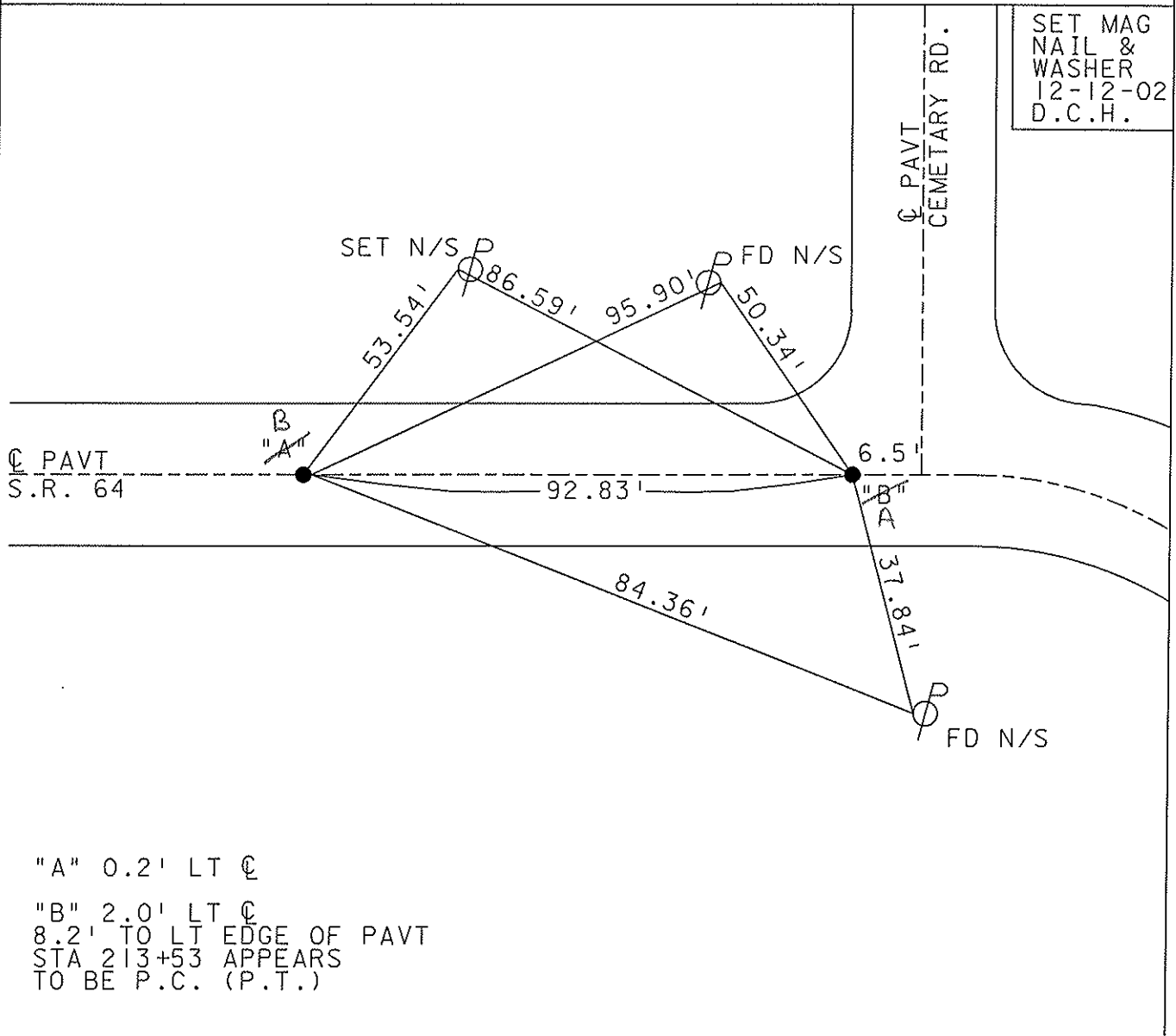
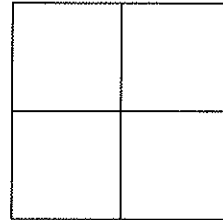
TYPE MONUMENT SM. RR SPIKE

ON SURFACE - ~~BELOW~~ YES

LEFT - Q PAVT - ~~RIGHT~~

TO EDGE PAVEMENT

S.L.M. A=212+61 B=213+53



"A" 0.2' LT Q

"B" 2.0' LT Q

8.2' TO LT EDGE OF PAVT
 STA 213+53 APPEARS
 TO BE P.C. (P.T.)

O.D.O.T. DISTRICT 2 SURVEY OFFICE

PERSONNEL _____

REFERENCE NO. 24 & 25 SHEET 26 OF 49

NOTES LOEHRKE

H.C. CURTIS

R.C. LUCE

DATE 8-9-91

WEATHER Clear

TEMP. +78

ROUTE S.R. 64

COUNTY Lucas

TOWNSHIP WATERVILLE

SECTION _____

T _____ R _____

TYPE MONUMENT 5m RR Spike

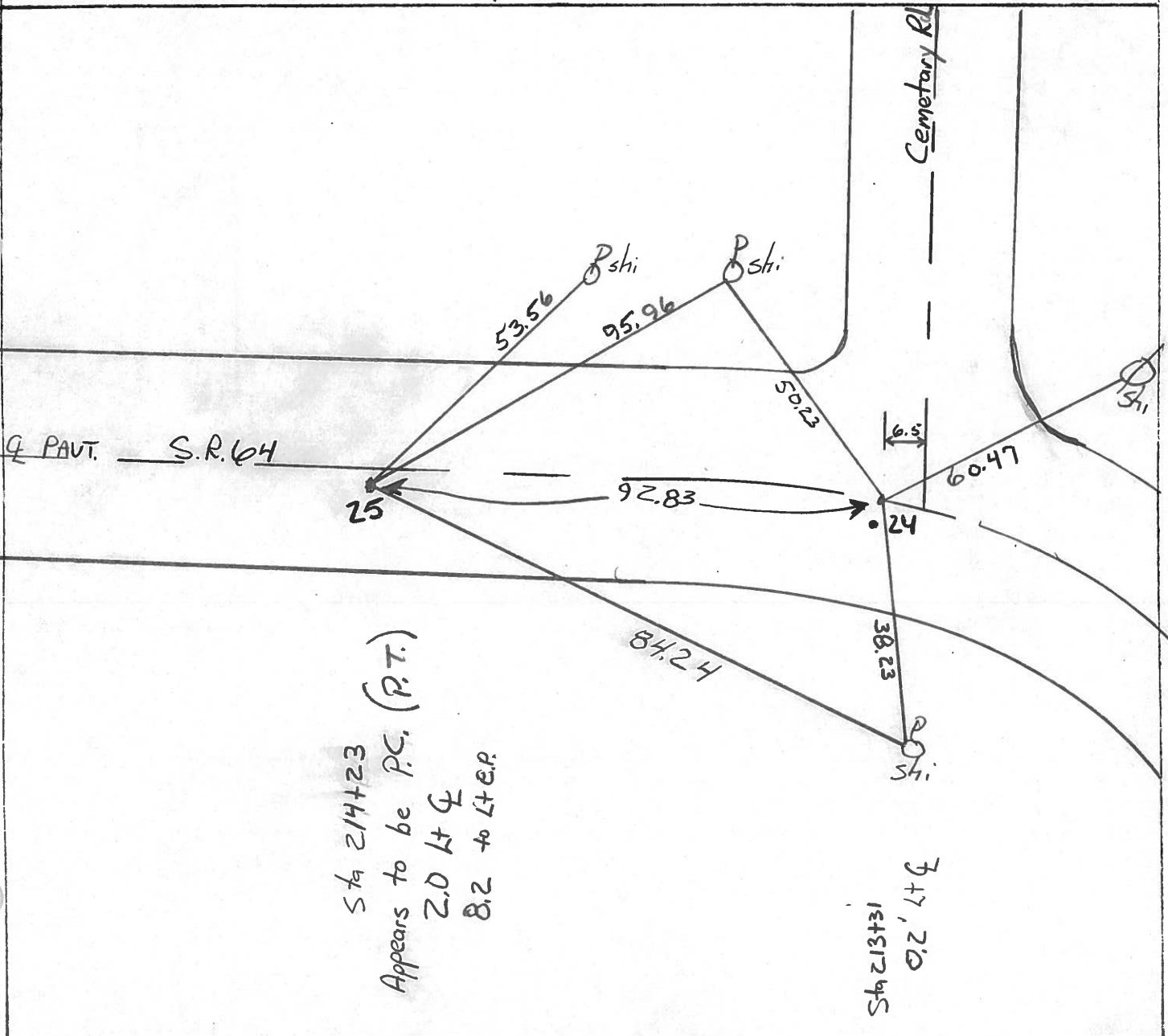
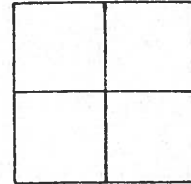
Set P.K. NAILS
3-4-92

ON SURFACE - BELOW

LEFT- & PAVT. - RIGHT

TO _____ EDGE PAVEMENT

S.L.M. 213+31 214+23



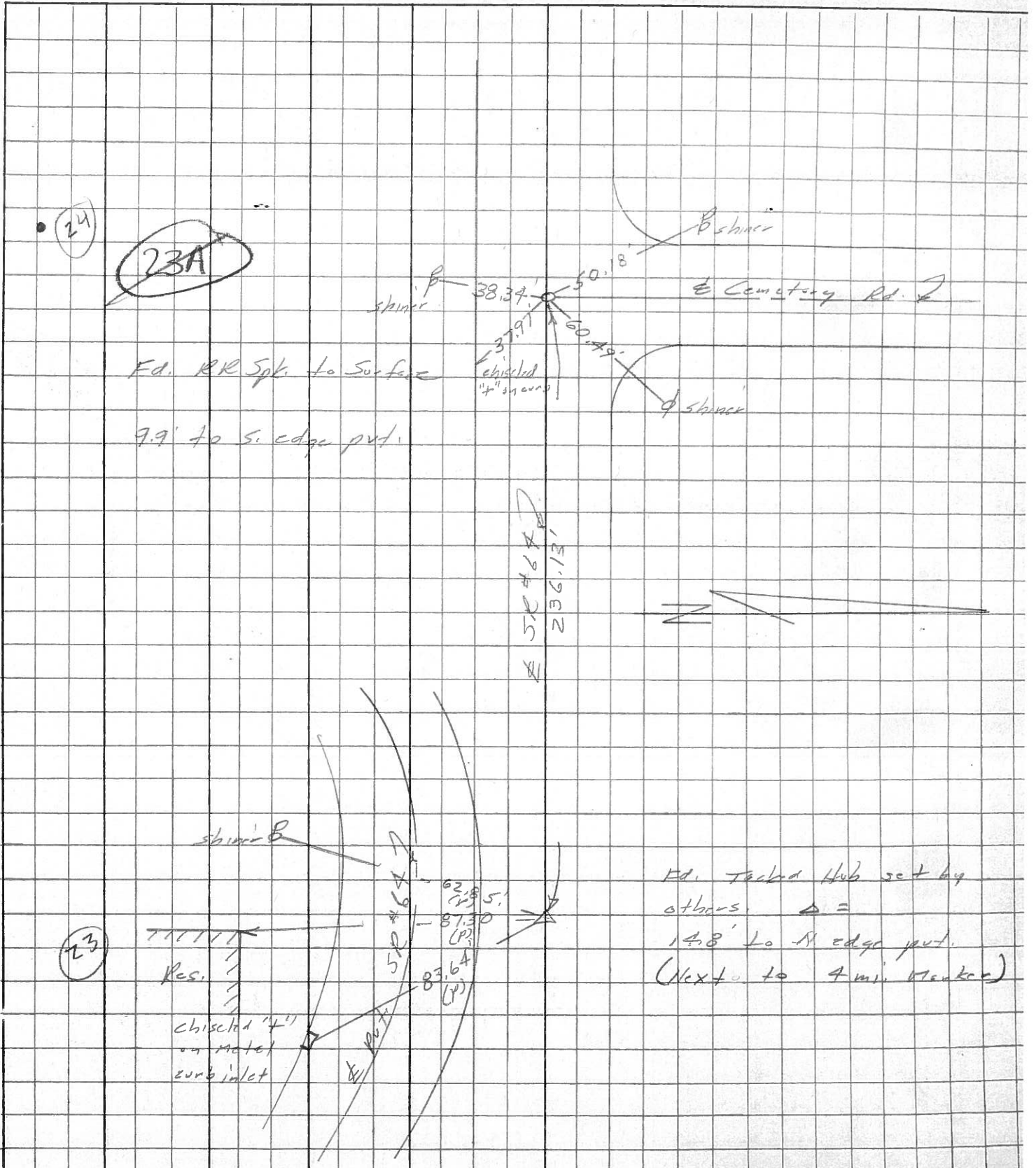
| PERSONNEL | TITLE | PERSONNEL | TITLE |
|-----------|-------|-----------|-------|
| Stone | | | |
| E | | | |
| Crew | | | |

COUNTY Lucas DATE 1 April 77

S. R. 64 WEATHER Cloudy

SEC. Whitehouse TEMP. 45°

DESCRIPTION Re fences to Central Pointe JOB NO. _____



PERSONNEL TITLE PERSONNEL TITLE

COUNTY Lucas DATE 24 Feb. 66

Stone

Beck

Brindley

Schroder

S. R. # 64

WEATHER Cool

SEC. Waterville - W.

TEMP. 32°

DESCRIPTION

Refs. To Control Pts.

JOB NO.

LEFT

CENTER LINE

RIGHT

20

#218

N. & S. 1/2 Sec. 1

51.63'

N. To Corn. Wit. Mon. (D)

Sta. 191475.05

29.49'

S.E. To Corn. Wit. Mon. (D)

$\Delta = 0^\circ 08' 30''$ Rt.

37.91'

S.W. To Corn. Wit. Mon. (D)

Fd. 1" I. Pin

~~12.86'~~

S. To Shiner in Guard Post (D)

~~2" Below Surface~~

21

#217

Int. Einzel Rd. N.

~~23.55'~~

~~S.W. To Shiner in Guard Post (D)~~

Sta. 197+15.63

59.07'

~~N.W. To Shiner in P.P. (D)~~

$\Delta = 0^\circ 20'$ Rt.

31.93'

N.E. To "+" on Corn. Curb (D)

Fd. 1" I. Pin To Surface

61.33'

~~N.W. To "+" on Corn. Curb (D)~~

~~N.E. To Shiner in T.P. (D)~~

S. To C. B. M.

22

#216

Int. Einzel Rd. S.

61.26'

S.E. To Shiner in P.P. (D)

Fd. R.R. Spk.

~~50.19' OK~~

~~S.E. To "+" Cut on Corn. Curb (D) OK~~

To Surface

61.39'

E.S.E. To Shiner in End Guard Post (D)

30.05'

~~W.S.W. To Shiner in End Guard Post (D)~~

S.W. "+" Cut on Corn. Curb

P.I. 200' E. Int.

Cemetery Rd.

24

#215

Int. Cemetery Rd.

60.55'

N.E. To Shiner in T.P. (D)

Fd. R.R. Spk.

45.88'

S.S.W. To Corn. Wit. Mon. (D)

To Surface

37.96'

S.E. To "+" Cut on Corn. Curb (D)

66.06'

N.N.W. To Shiner in P.P. (D)

50.83'

N.W. To Corn. Wit. Mon. (D)

27

N. & S. 1/2 Sec. 35

32.50'

N. To Shiner in P.P. (D)

239+89.70 $\Delta = 0^\circ 01'$ Rt.

42.84'

N.N.W. To "+" Cut on End Sidewalk (D)

Fd. 1" I. Pin To Surface

35.52'

S.S.W. To Corn. Wit. Mon.