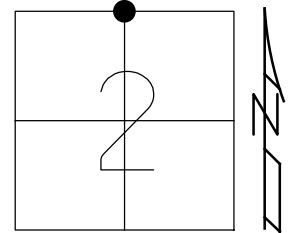


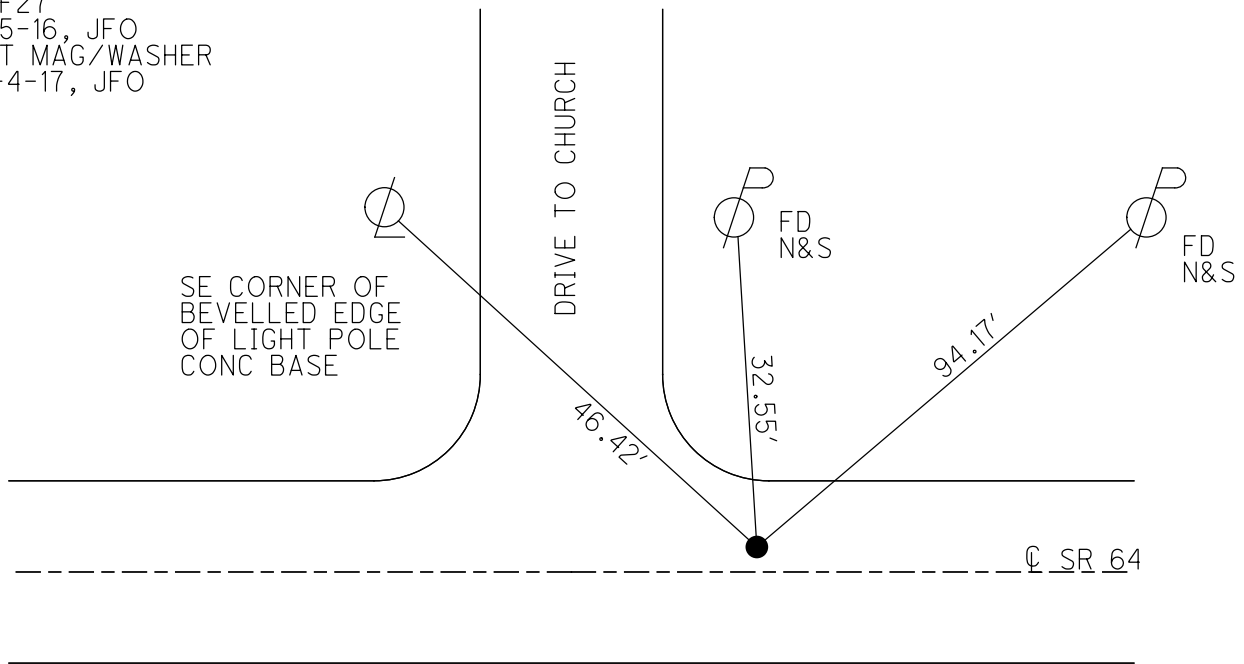
O.D.O.T. DISTRICT 2 SURVEY OFFICE (USE ONLY)

PERSONNEL	REFERENCE NO.	<u>27</u>	SHEET	<u>18</u>	OF	<u>50</u>
NOTES	RHOADES	DATE	<u>6-16-17</u>	ROUTE	<u>SR 64</u>	
H.C.	<u>O'DONNELL</u>	WEATHER	<u>FAIR</u>	COUNTY	<u>LUCAS</u>	
R.C.	<u>CARSON</u>	TEMP.	<u>73°</u>	TOWNSHIP	<u>WATERVILLE</u>	
	<u>POORE</u>			SECTION	<u>2</u>	
				T	<u>7</u>	R
				N		E

TYPE MONUMENT MAG/WASHER
 ON SURFACE - ~~BELOW~~ ON
~~LEFT~~ - CL PAV'T - RIGHT 2.8'
8.3 TO RT EDGE PAVEMENT
 S.L.M. 238+81.08
 Grid: Northing: 676667.6959 Easting: 1613696.1326



RECORD:
 Δ=0-01' RT
 FD 1" IPIN IN CONC
 SET MAG/WASHER
 12-12-02, DCH
 FD MAG/WASHER
 REF 27
 1-15-16, JFO
 SET MAG/WASHER
 12-4-17, JFO



O.D.O.T. DISTRICT 2 SURVEY OFFICE

PERSONNEL

REFERENCE NO. 27

SHEET 29 OF 47

NOTES ROUSOS

DATE 5-21-02

ROUTE S.R. 64

H.C. HOMAN

WEATHER CLOUDY

COUNTY LUCAS

R.C. MICHALAK

TEMP. 50

TOWNSHIP WATERVILLE

SECTION _____

T ___ R ___

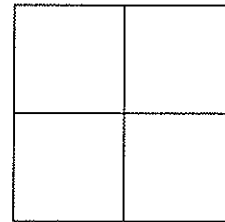
TYPE MONUMENT _____ P.K. NAIL _____

ON SURFACE - ~~BELOW~~ _____ YES _____

~~LEFT~~ - Q PAVT - RIGHT _____ 2.8' _____

8.3 TO RT. EDGE PAVEMENT _____

S.L.M. _____ 239+08 _____

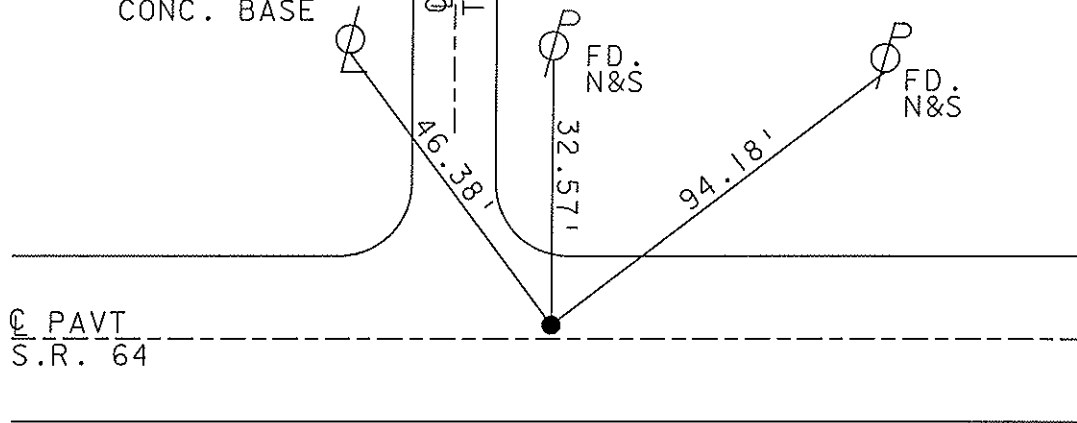


Δ=0-01' RT.
FD. 1" T. PIN
IN CONC.

SET MAG
NAIL &
WASHER
12-12-02
D.C.H.

SE CORNER OF
BEVELLED EDGE
OF LIGHT POLE
CONC. BASE

Q DRIVE
TO CHURCH



Q PAVT
S.R. 64

O.D.O.T. DISTRICT 2 SURVEY OFFICE

PERSONNEL

REFERENCE NO. 27

SHEET 28 OF 49

NOTES LOEHRKE

H.C. CURTIS

R.C. Luce

DATE 8-9-91

WEATHER Clear

TEMP. +77

ROUTE S.R. 64

COUNTY LUCAS

TOWNSHIP WATERVILLE

SECTION _____

T _____ R _____

TYPE MONUMENT P.K. NAIL

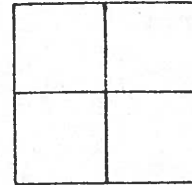
Set P.K. NAIL
3-4-92

ON SURFACE - ~~BELOW~~ Yes

~~LEFT~~ - RIGHT PAV'T. - Z.B. RT

6.8' TO RT EDGE PAVEMENT

S.L.M. 239+78



RECORD:

FL 1" I. PIN IN CONC.

$\Delta = 00.01' RT.$

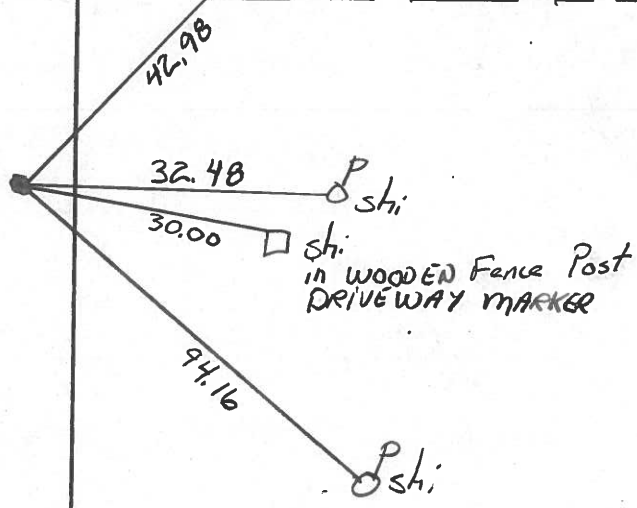
S.R. 64

PAVT



"4" CONC. Walk

DRIVE to Church



Town 7N Range 9E

S 1/4 Corner of Sections 35

Kind of Monument IRON PIN Remarks IN CONC.

MON. AT SURFACE OF PAYMT. S.H.

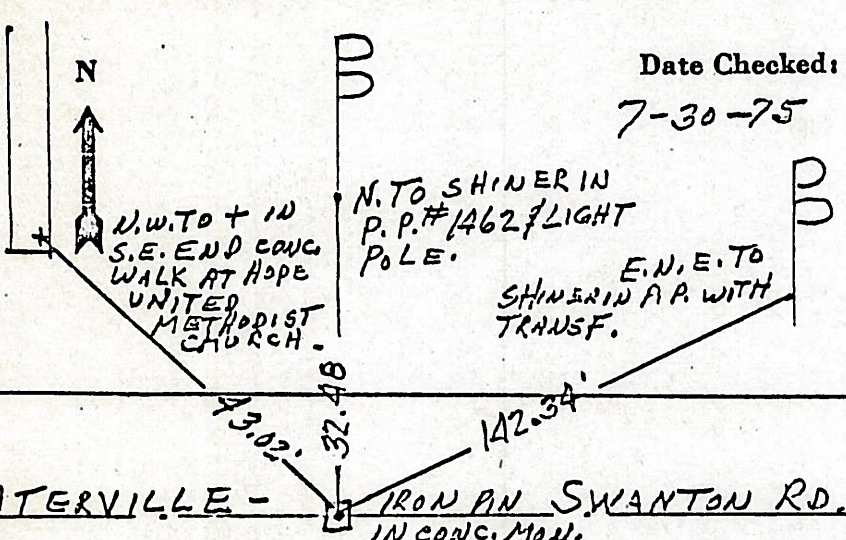
FOUND BY LIPPER.

N. & S. Road 1/2 MILE OF TEXAS ST. IN WHITE HOUSE, F. B. P.

E. & W. Road WATERVILLE - SWANTON RD. F. B. P.

OPEN
UNITED
METHODIST
CHURCH

Date Checked:
7-30-75



Town 7N Range 9E

Prop. Corner of Sections 35

Kind of Monument Stone Remarks S.W. Cor. Lot

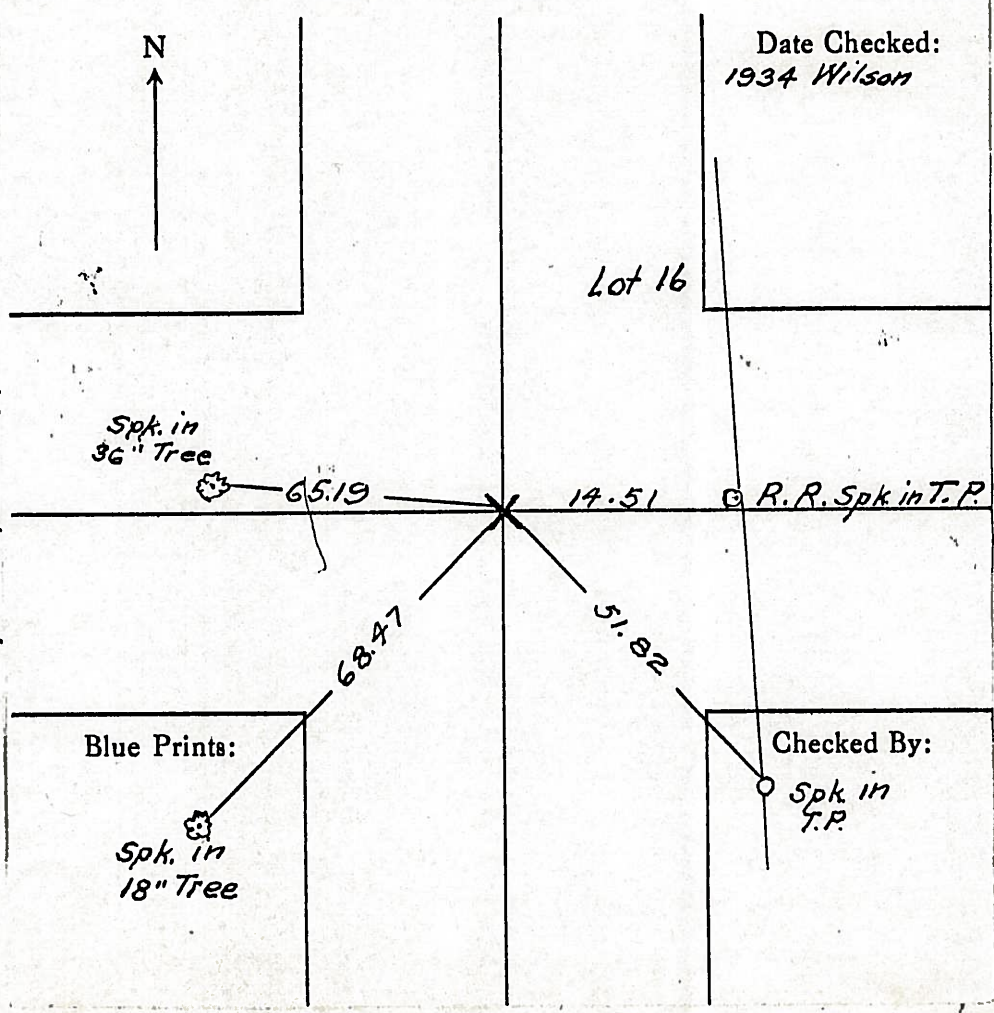
16 Cable & Shepler's Add. Whitehouse Ohio.

FOUND SET BY

N. & S. Road _____ F. B. P.

E. & W. Road Shepler Ave. F. B. P.

Date Checked:
1934 Wilson

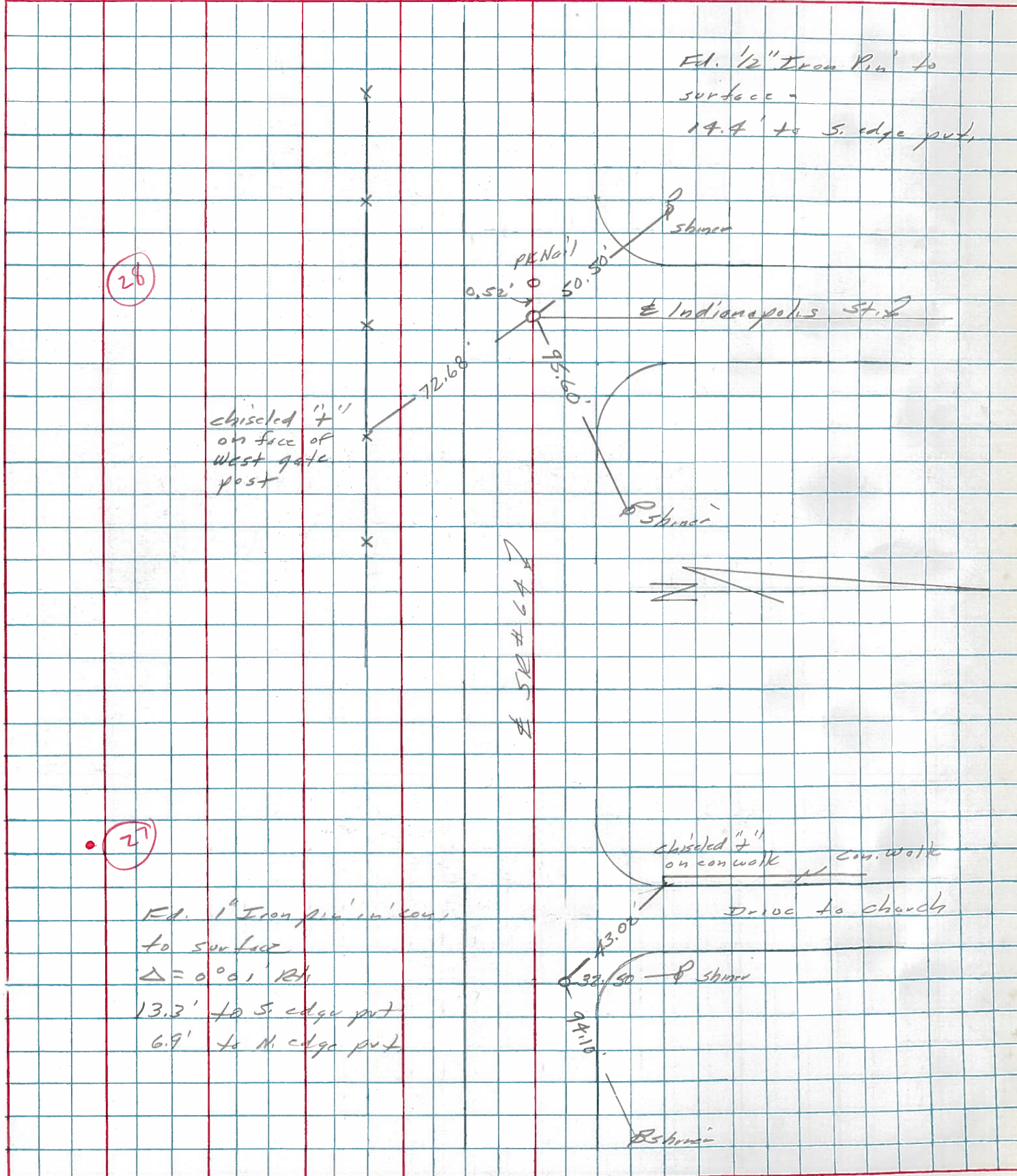


Blue Prints:

Checked By:

PERSONNEL	TITLE	PERSONNEL	TITLE	COUNTY	DATE	WEATHER	TEMP.
Stanc				Lucas	1 April 77	Fair	52°
E				S. R. 67			
Crew				SEC. Whitehouse			

DESCRIPTION References to Control Points JOB NO.



PERSONNEL TITLE PERSONNEL TITLE

COUNTY Lucas

DATE July 31, 1968

D. Curtis

S. R. Co4

WEATHER mild

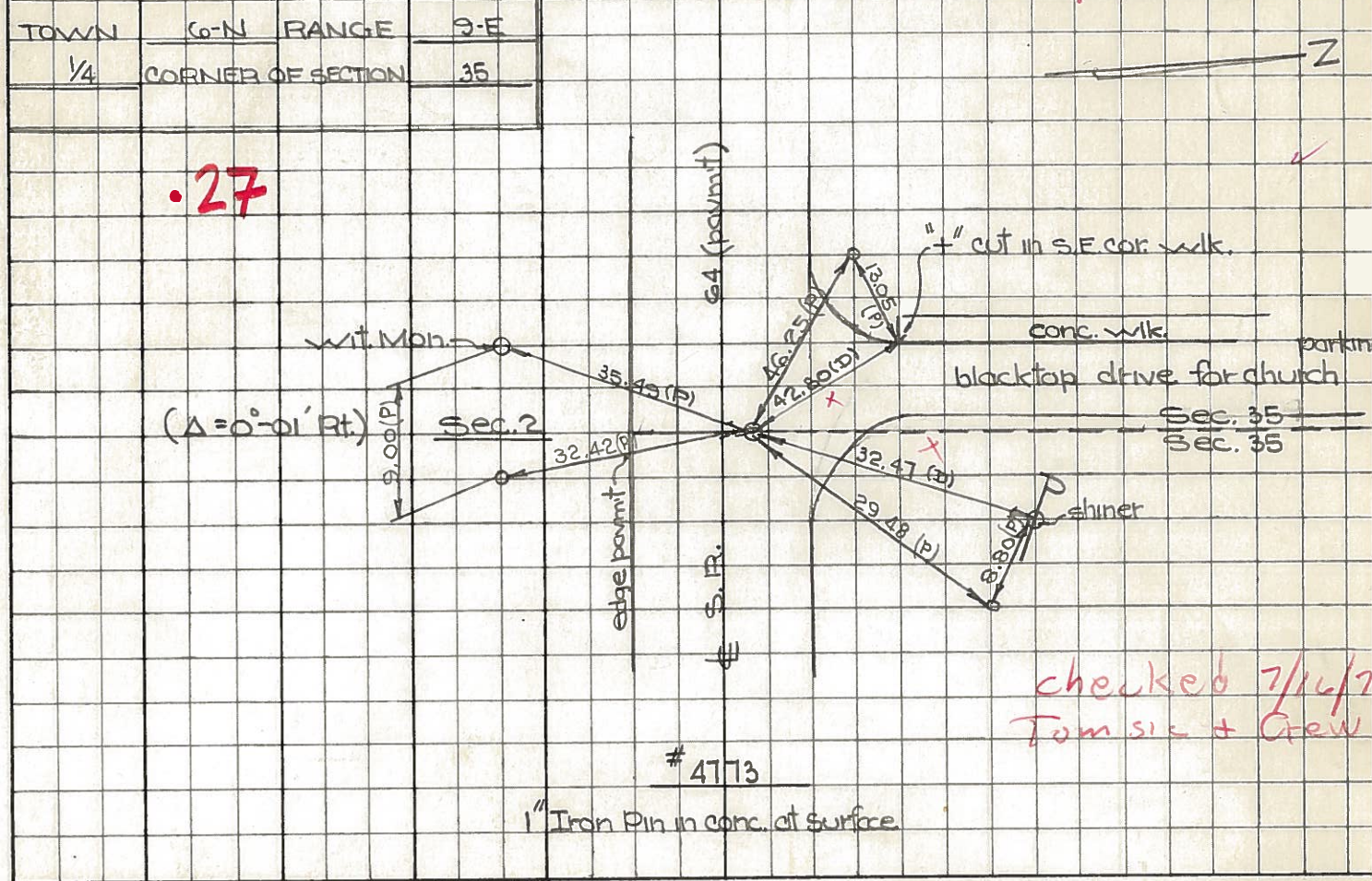
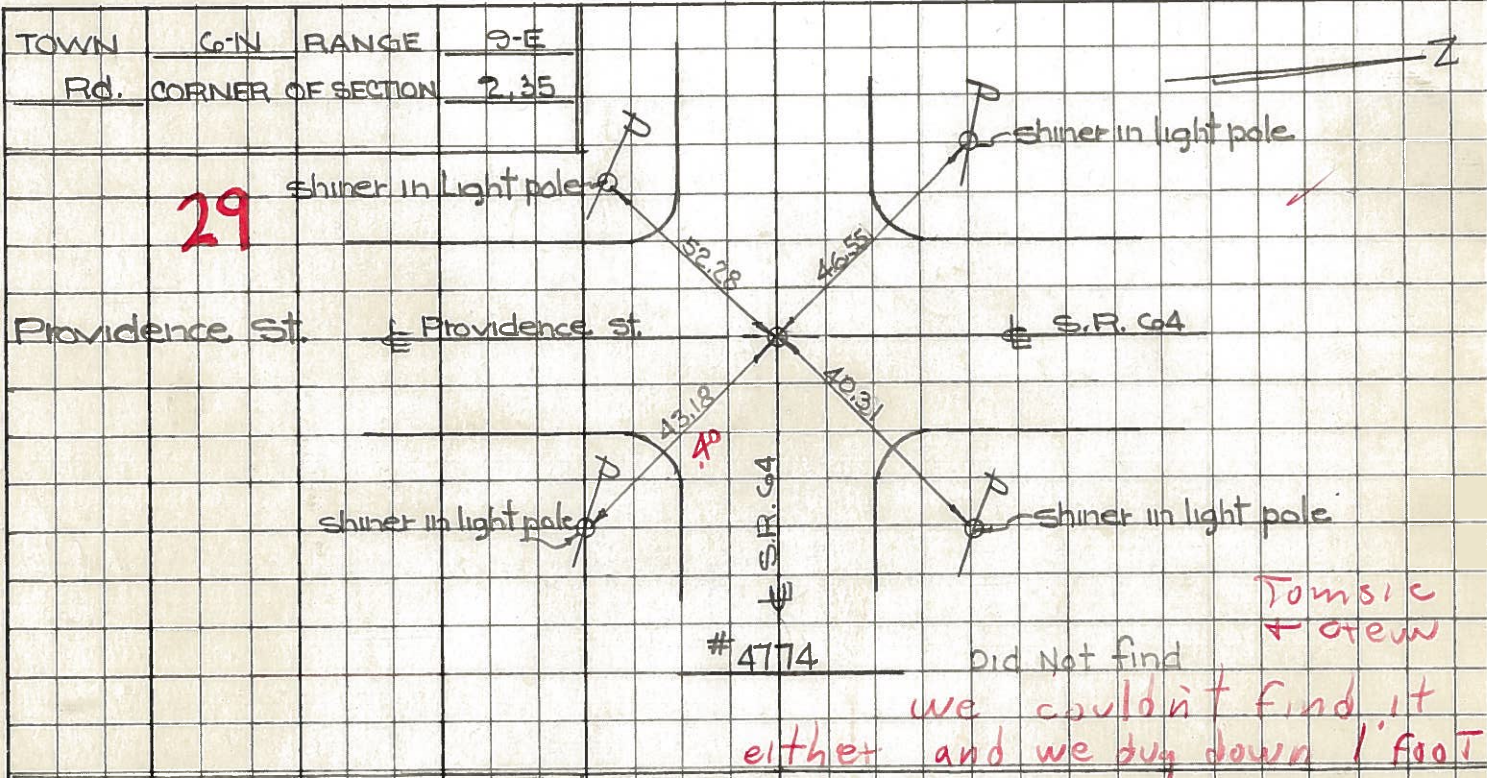
J. Teal

SEC.

TEMP. 75°±

DESCRIPTION S.R. Co4 - Ref. Mon. & Control Points

JOB NO. 02994(0)



PERSONNEL TITLE PERSONNEL TITLE

COUNTY Lucas DATE 24 Feb. 66

Stone

Beck

Brindley

Schroder

S. R. # 64

WEATHER Cool

SEC. Waterville - W.

TEMP. 32°

DESCRIPTION

Refs. To Control Pts.

JOB NO.

LEFT

CENTER LINE

RIGHT

20

#218

N. & S. 1/2 Sec. 1

51.63'

N. To Corn. Wit. Mon. (D)

Sta. 191475.05

29.49'

S.E. To Corn. Wit. Mon. (D)

$\Delta = 0^\circ 08' 30''$ Rt.

37.91'

S.W. To Corn. Wit. Mon. (D)

Fd. 1" I. Pin

~~12.86'~~

S. To Shiner in Guard Post (D)

~~2" Below Surface~~

21

#217

Int. Einzel Rd. N.

~~23.55'~~

~~S.W. To Shiner in Guard Post (D)~~

Sta. 197+15.63

59.07'

~~N.W. To Shiner in P.P. (D)~~

$\Delta = 0^\circ 20'$ Rt.

31.93'

N.E. To "+" on Corn. Curb (D)

Fd. 1" I. Pin To Surface

61.33'

~~N.W. To "+" on Corn. Curb (D)~~

~~N.E. To Shiner in T.P. (D)~~

S. To C. B. M.

22

#216

Int. Einzel Rd. S.

61.26'

S.E. To Shiner in P.P. (D)

Fd. R.R. Spk.

~~50.19' OK~~

~~S.E. To "+" Cut on Corn. Curb (D) OK~~

To Surface

61.39'

E.S.E. To Shiner in End Guard Post (D)

30.05'

~~W.S.W. To Shiner in End Guard Post (D)~~

S.W. "+" Cut on Corn. Curb

P.I. 200' E. Int.

Cemetery Rd.

24

#215

Int. Cemetery Rd.

60.55'

N.E. To Shiner in T.P. (D)

Fd. R.R. Spk.

45.88'

S.S.W. To Corn. Wit. Mon. (D)

To Surface

37.96'

S.E. To "+" Cut on Corn. Curb (D)

66.06'

N.N.W. To Shiner in P.P. (D)

50.83'

N.W. To Corn. Wit. Mon. (D)

27

N. & S. 1/2 Sec. 35

32.50'

N. To Shiner in P.P. (D)

239+89.70 $\Delta = 0^\circ 01'$ Rt.

42.84'

N.N.W. To "+" Cut on End Sidewalk (D)

Fd. 1" I. Pin To Surface

35.52'

S.S.W. To Corn. Wit. Mon.