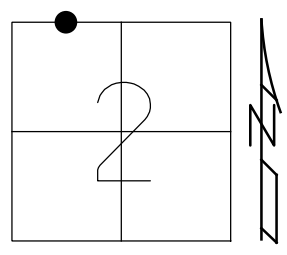


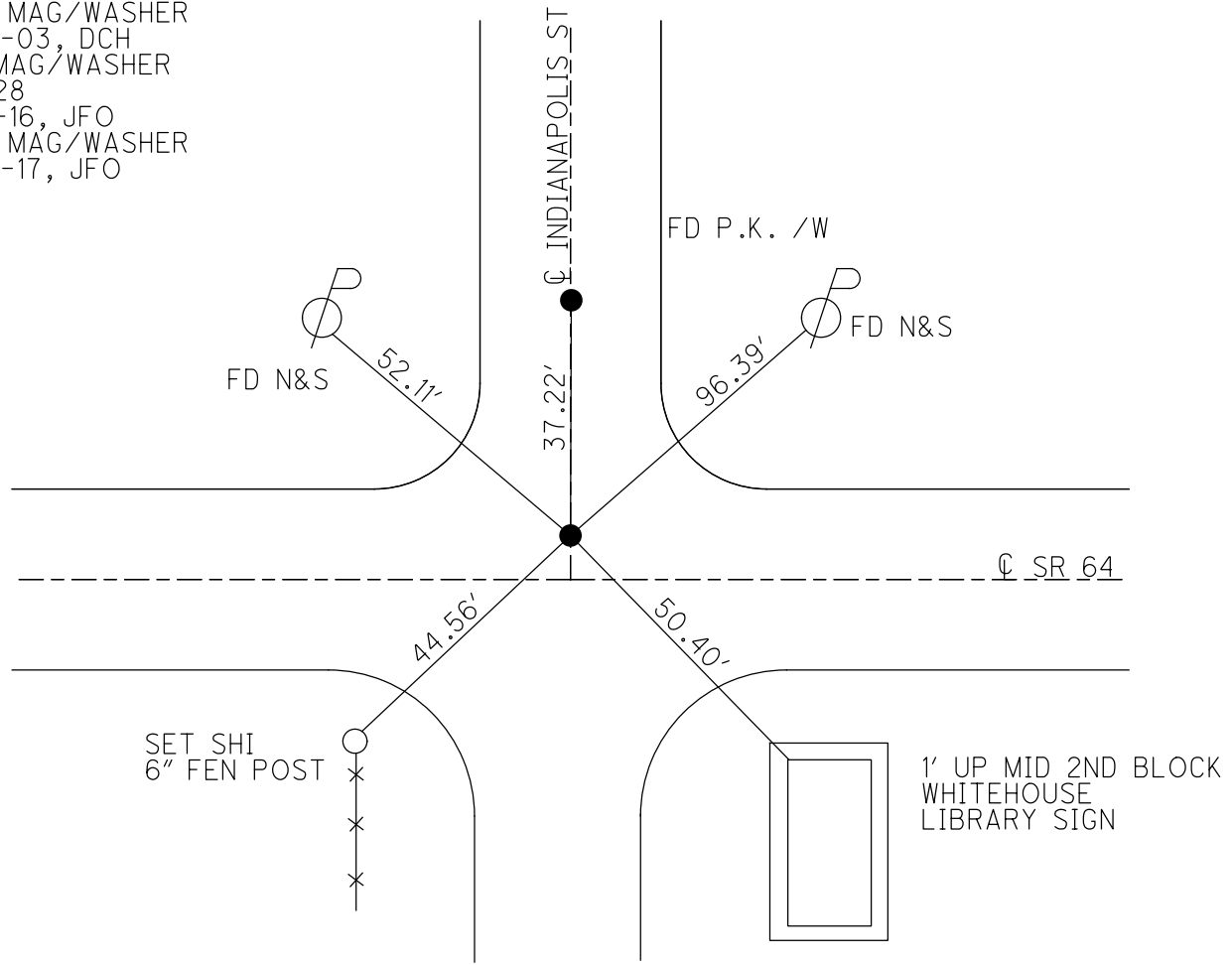
O.D.O.T. DISTRICT 2 SURVEY OFFICE (USE ONLY)

PERSONNEL	REFERENCE NO.	<u>28</u>	SHEET	<u>19</u>	OF	<u>50</u>
NOTES	<u>RHOADES</u>	DATE	<u>6-16-17</u>	ROUTE	<u>SR 64</u>	
H.C.	<u>O'DONNELL</u>	WEATHER	<u>FAIR</u>	COUNTY	<u>LUCAS</u>	
R.C.	<u>CARSON</u>	TEMP.	<u>73°</u>	TOWNSHIP	<u>WATERVILLE</u>	
	<u>POORE</u>			SECTION	<u>2</u>	
				T	<u>7</u>	R
					<u>9</u>	E

TYPE MONUMENT MAG NAIL  
 ON SURFACE - BELOW ON  
~~LEFT~~ - ☉ PAV'T - RIGHT 4.4'  
13.8' TO RT EDGE PAVEMENT  
 S.L.M. 245+79  
 Grid: Northing: 676668.3063 Easting: 1612998.6588



RECORD:  
 OLD DUG POINT EXPOSED  
 12-12-02, DCH  
 PATCHED HOLE  
 SET MAG/WASHER  
 7-18-03, DCH  
 FD MAG/WASHER  
 REF28  
 1-15-16, JFO  
 SET MAG/WASHER  
 12-4-17, JFO



O.D.O.T. DISTRICT 2 SURVEY OFFICE

PERSONNEL

REFERENCE NO. 28

SHEET 30 OF 47

NOTES ROUSOS

DATE 5-21-02

ROUTE S.R. 64

H.C. HOMAN

WEATHER CLOUDY

COUNTY LUCAS

R.C. MICHALAK

TEMP. 50

TOWNSHIP WATERVILLE

SECTION \_\_\_\_\_

T\_\_\_\_ R\_\_\_\_

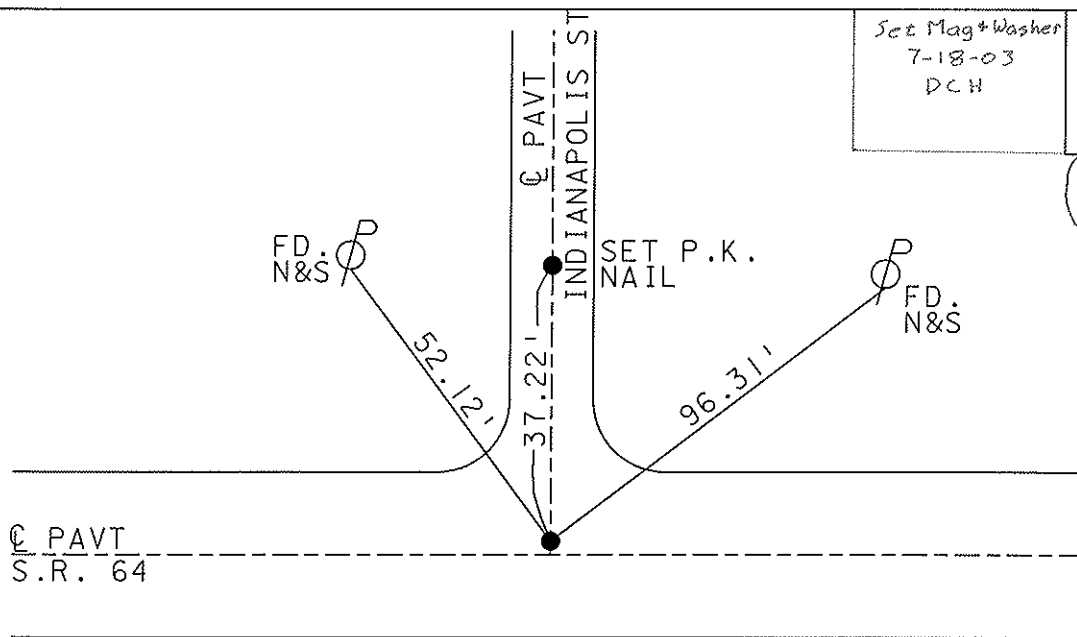
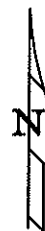
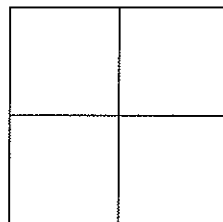
TYPE MONUMENT \_\_\_\_\_ P.K. NAIL \_\_\_\_\_

ON SURFACE - ~~BELOW~~ \_\_\_\_\_ YES \_\_\_\_\_

~~LEFT~~ - Q PAV'T - RIGHT \_\_\_\_\_ 4.4' \_\_\_\_\_

13.8 TO RT. EDGE PAVEMENT \_\_\_\_\_

S.L.M. \_\_\_\_\_ 246+17 \_\_\_\_\_



Set Mag + Washer  
7-18-03  
D.C.H.

OLD DUG  
POINT  
EXPOSED  
12-12-02  
D.C.H.

7-18-03  
Patched  
Holes, Set  
New Point

# O.D.O.T. DISTRICT 2 SURVEY OFFICE

PERSONNEL \_\_\_\_\_

REFERENCE NO. 28

SHEET 29 OF 49

NOTES LOEHRKE

H.C. CURTIS

R.C. Luce

DATE 8-9-91

WEATHER Clear

TEMP. +75

ROUTE S.R. 64

COUNTY LUCAS

TOWNSHIP WATERVILLE

SECTION \_\_\_\_\_

T \_\_\_\_\_ R \_\_\_\_\_

TYPE MONUMENT P.K. NAIL

Set P.K. Nail

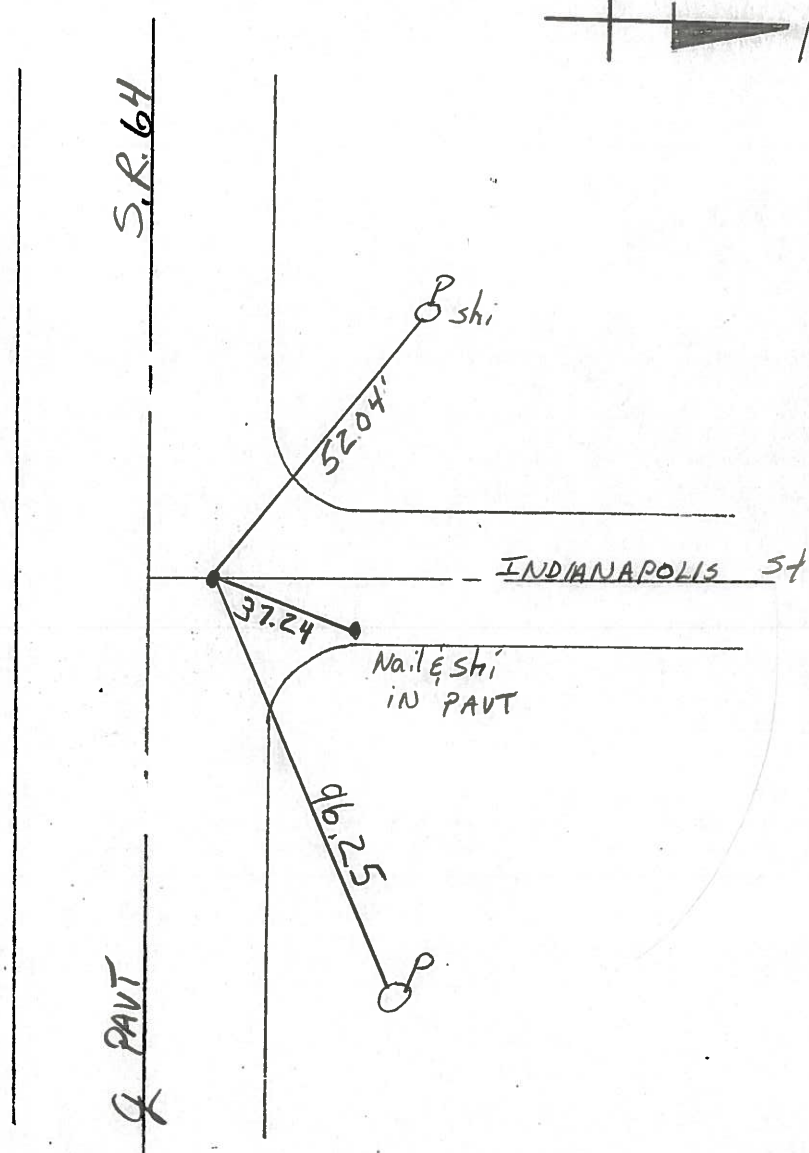
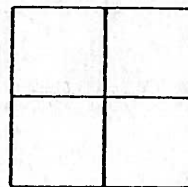
ON SURFACE - ~~BELOW~~ Yes

3-4-92

~~LEFT~~ - 4.4 PAV'T. - RIGHT

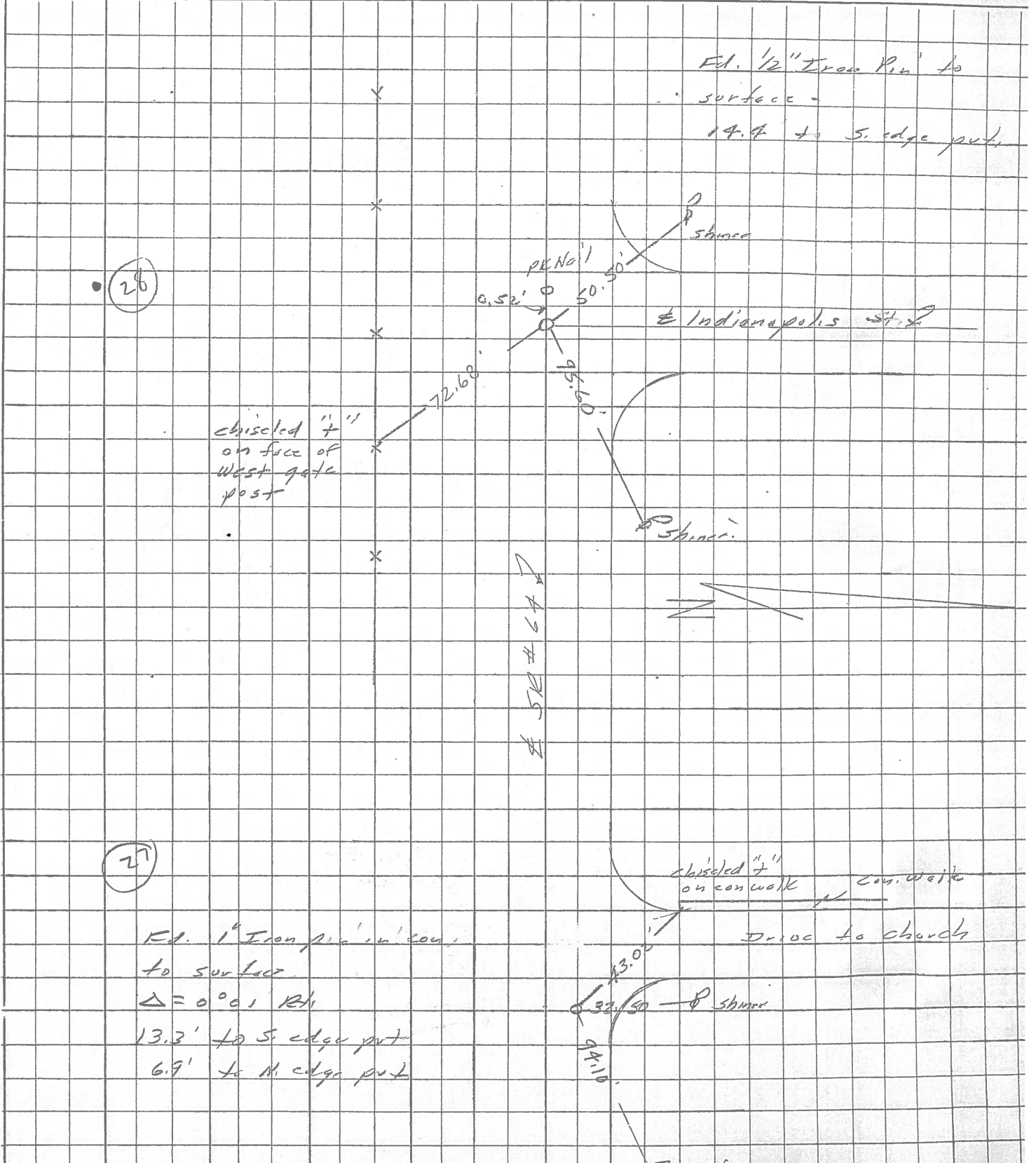
13.8 TO Lt EDGE PAVEMENT

S.L.M. 246 + 77



PERSONNEL	TITLE	PERSONNEL	TITLE	COUNTY	DATE	WEATHER	TEMP.
Stone				Lucas	1 April 77	Fair	52°
E				S. R. 69			
Crew				SEC. Whitehouse			

DESCRIPTION: References to Control Points LEFT CENTER LINE RIGHT JOB NO.



PERSONNEL	TITLE	PERSONNEL	TITLE	COUNTY	DATE	WEATHER	TEMP.
Tomsic		Jackson		Lucas	July 21, 1971	P. Cloudy	80°
Neuser				#64			
Vanyo							
Granata							

DESCRIPTION: Mon. Reference for S.R. #64

