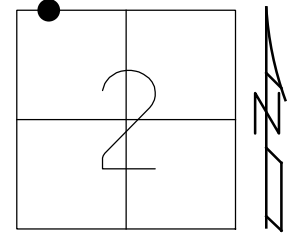


O.D.O.T. DISTRICT 2 SURVEY OFFICE (USE ONLY)

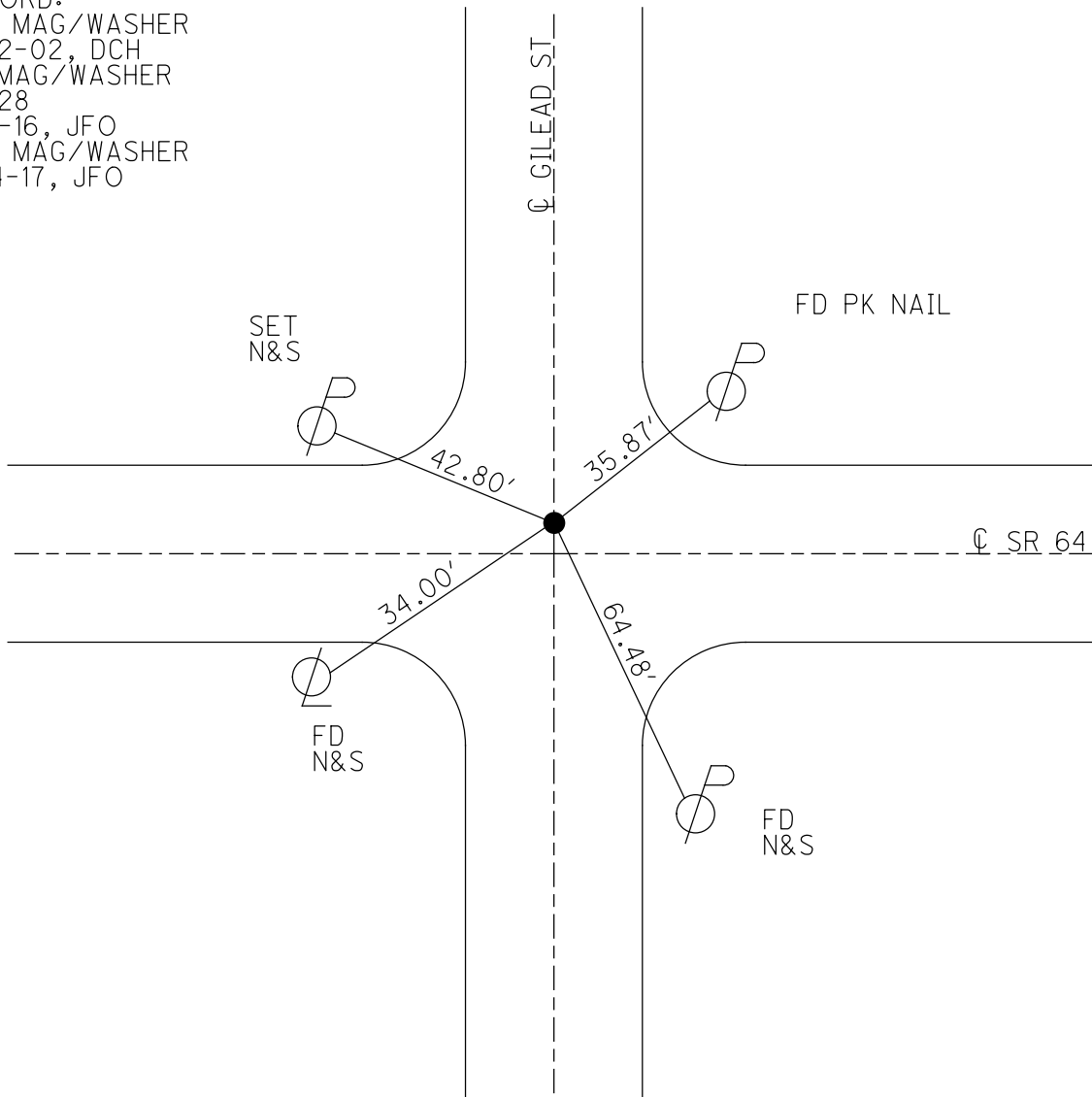
PERSONNEL _____ REFERENCE NO. 28A SHEET 20 OF 50
 NOTES RHOADES DATE 6-16-17 ROUTE SR 64
 H.C. POORE WEATHER FAIR COUNTY LUCAS
 R.C. CARSON TEMP. 73° TOWNSHIP WATERVILLE
O'DONNELL SECTION 2
 T 7 N R 9 E

TYPE MONUMENT MAG/WASHER
 ON SURFACE - ~~BELOW~~ ON
~~LEFT~~ - ☉ PAV'T - RIGHT 2'
10' TO LT EDGE PAVEMENT
 S.L.M. 253+46



Grid: Northing: 676670.2168 Easting: 1612231.1410

RECORD:
 SET MAG/WASHER
 12-12-02, DCH
 FD MAG/WASHER
 REF28
 1-15-16, JFO
 SET MAG/WASHER
 12-4-17, JFO



O.D.O.T. DISTRICT 2 SURVEY OFFICE

PERSONNEL

NOTES _____
 H.C. ROUSOS
 R.C. HOMAN

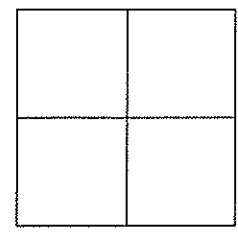
REFERENCE NO. 28A

DATE 5-21-02
 WEATHER CLOUDY
 TEMP. 50

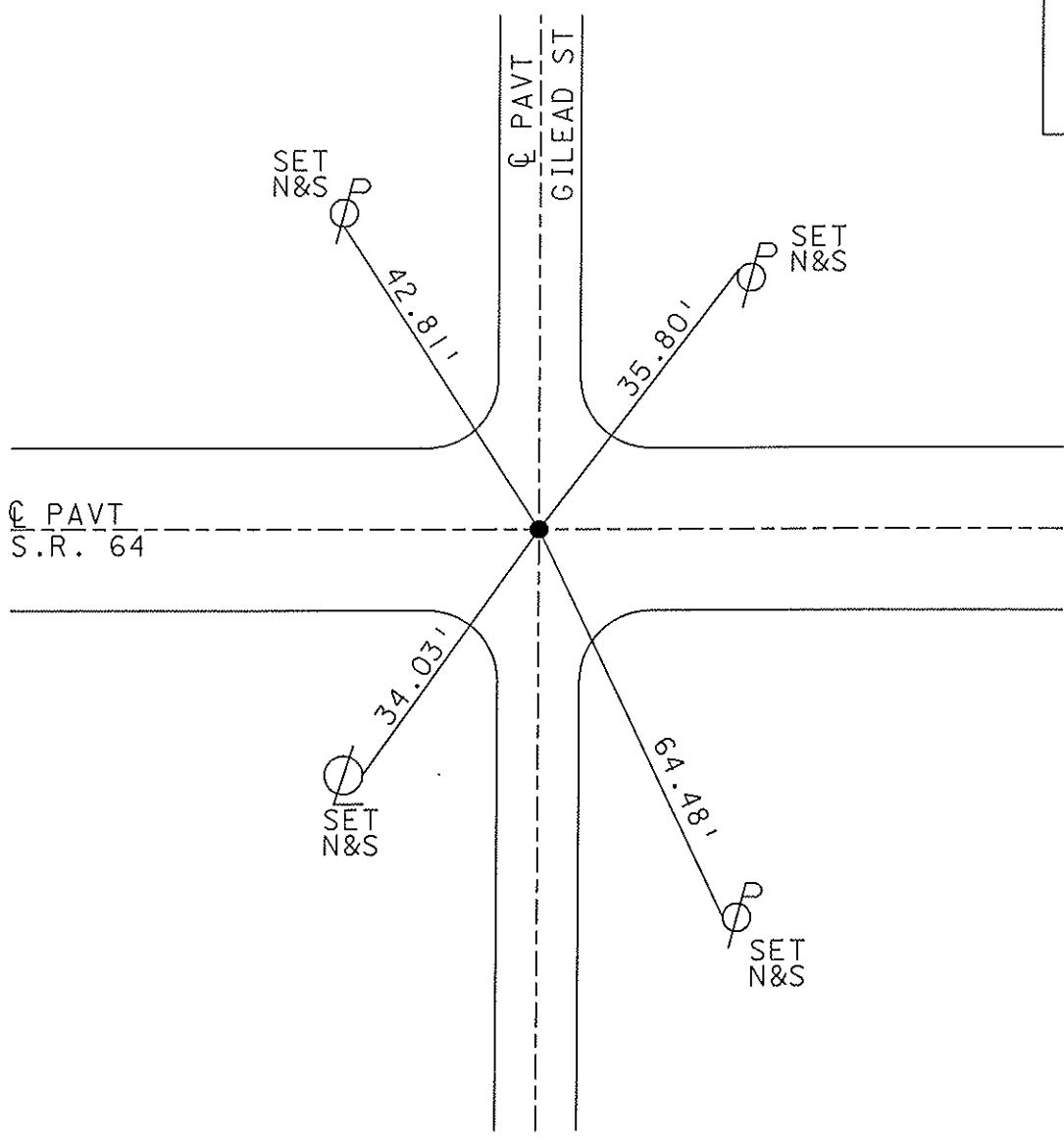
SHEET 31 OF 47
~~28~~ OF ~~42~~

ROUTE S.R. 64
 COUNTY LUCAS
 TOWNSHIP WATERVILLE
 SECTION _____
 T ___ R ___

TYPE MONUMENT _____ P.K. NAIL
 ON SURFACE - ~~BELOW~~ _____ YES
 LEFT - Q PAV'T - ~~RIGHT~~ _____ 1' LT
 _____ 10' TO LT. EDGE PAVEMENT
 S.L.M. _____ 253+85



SET MAG
 NAIL &
 WASHER
 12-12-02
 D.C.H.

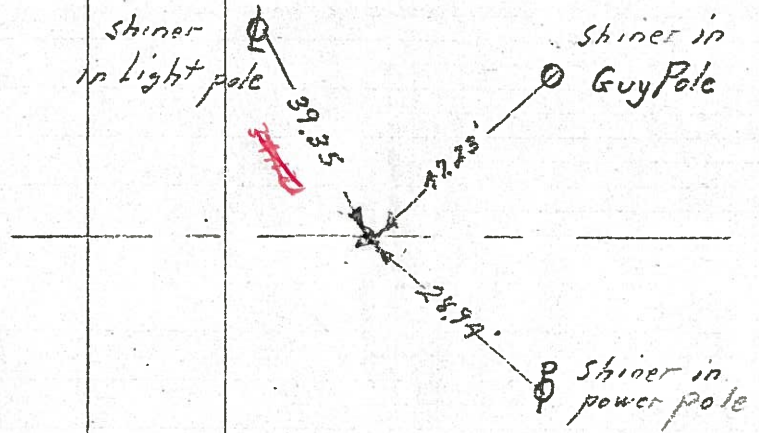


Personnel	Title
<i>Mearitt</i>
<i>Jackson</i>
<i>Rodenaske</i>
<i>Carpenter</i>

Date 12-3-51 County LUCAS Sheet No. 1
 Weather Clear S. R. No. 64 Section Whitcomb Job No.

254+95.4 @ GILEAD ST.

.28A



260+23.4 @ Waterville & Providence St.

29

