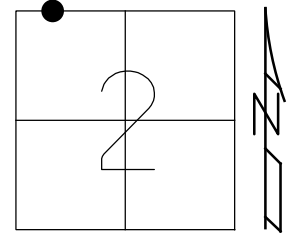


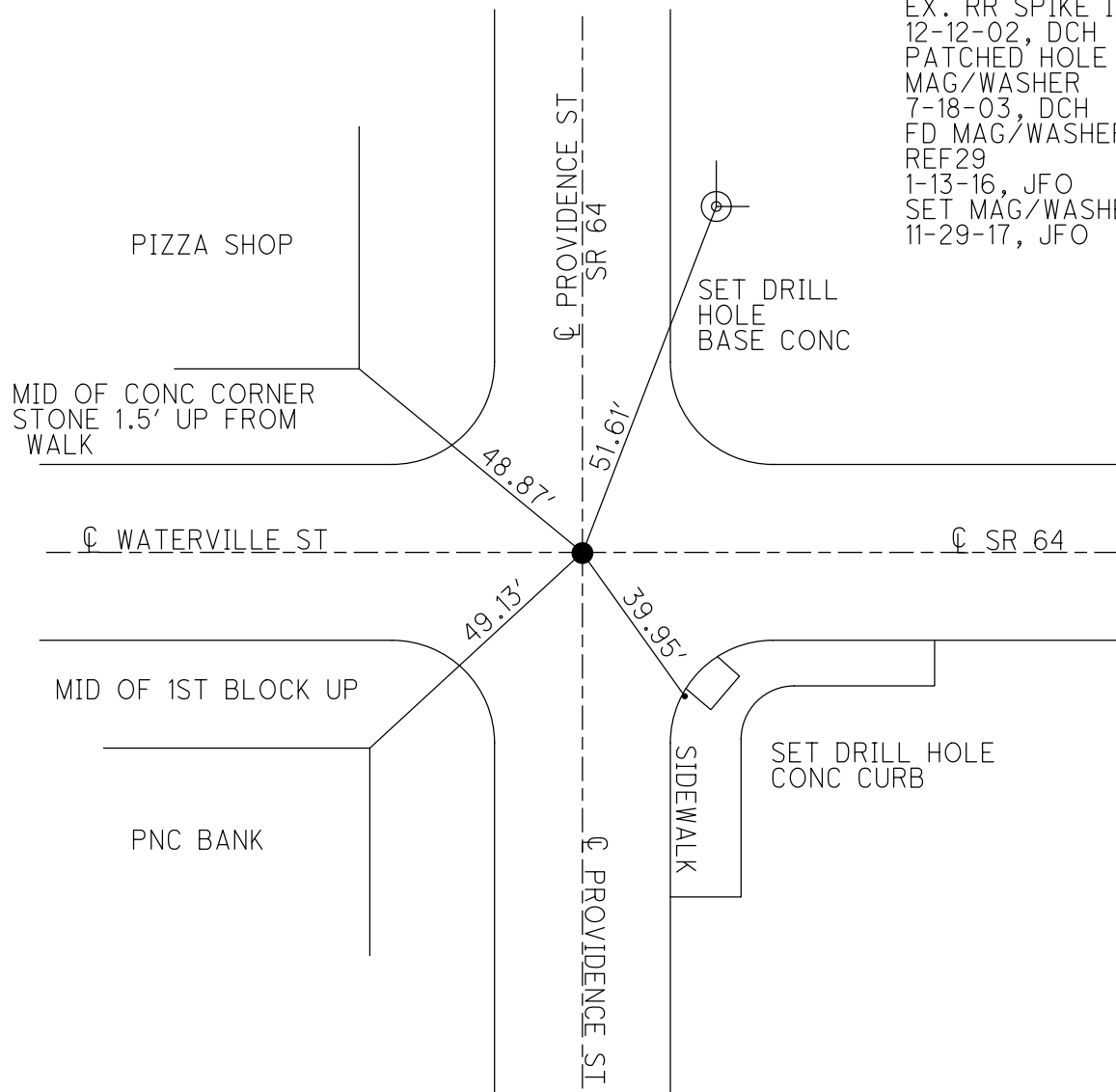
O.D.O.T. DISTRICT 2 SURVEY OFFICE (USE ONLY)

PERSONNEL \_\_\_\_\_ REFERENCE NO. 29 SHEET 21 OF 50  
 NOTES RHOADES DATE 6-6-17 ROUTE SR 64  
 H.C. POORE WEATHER FAIR COUNTY LUCAS  
 R.C. CARSON TEMP. 69° TOWNSHIP WATERVILLE  
 \_\_\_\_\_ O'DONNELL \_\_\_\_\_ SECTION 2  
 \_\_\_\_\_ T 7 N R 9 E

TYPE MONUMENT MAG/WASHER  
 ON SURFACE - ~~BELOW~~ ON \_\_\_\_\_  
~~LEFT~~ - ☉ PAV'T - ~~RIGHT~~ ON \_\_\_\_\_  
 \_\_\_\_\_ TO \_\_\_\_\_ EDGE PAVEMENT  
 S.L.M. 258+64.82  
 Grid: Northing: 676671.5226 Easting: 1611712.3954



RECORD:  
 EX. RR SPIKE IS EXPOSED  
 12-12-02, DCH  
 PATCHED HOLE SET  
 MAG/WASHER  
 7-18-03, DCH  
 FD MAG/WASHER  
 REF29  
 1-13-16, JFO  
 SET MAG/WASHER  
 11-29-17, JFO



O.D.O.T. DISTRICT 2 SURVEY OFFICE

PERSONNEL

NOTES ROUSOS

H.C. HOMAN

R.C. MICHALAK

REFERENCE NO. 29

DATE 5-21-02

WEATHER CLOUDY

TEMP. 50

SHEET 32 OF 47

ROUTE S.R. 64

COUNTY LUCAS

TOWNSHIP WATERVILLE

SECTION \_\_\_\_\_

T. \_\_\_ R. \_\_\_

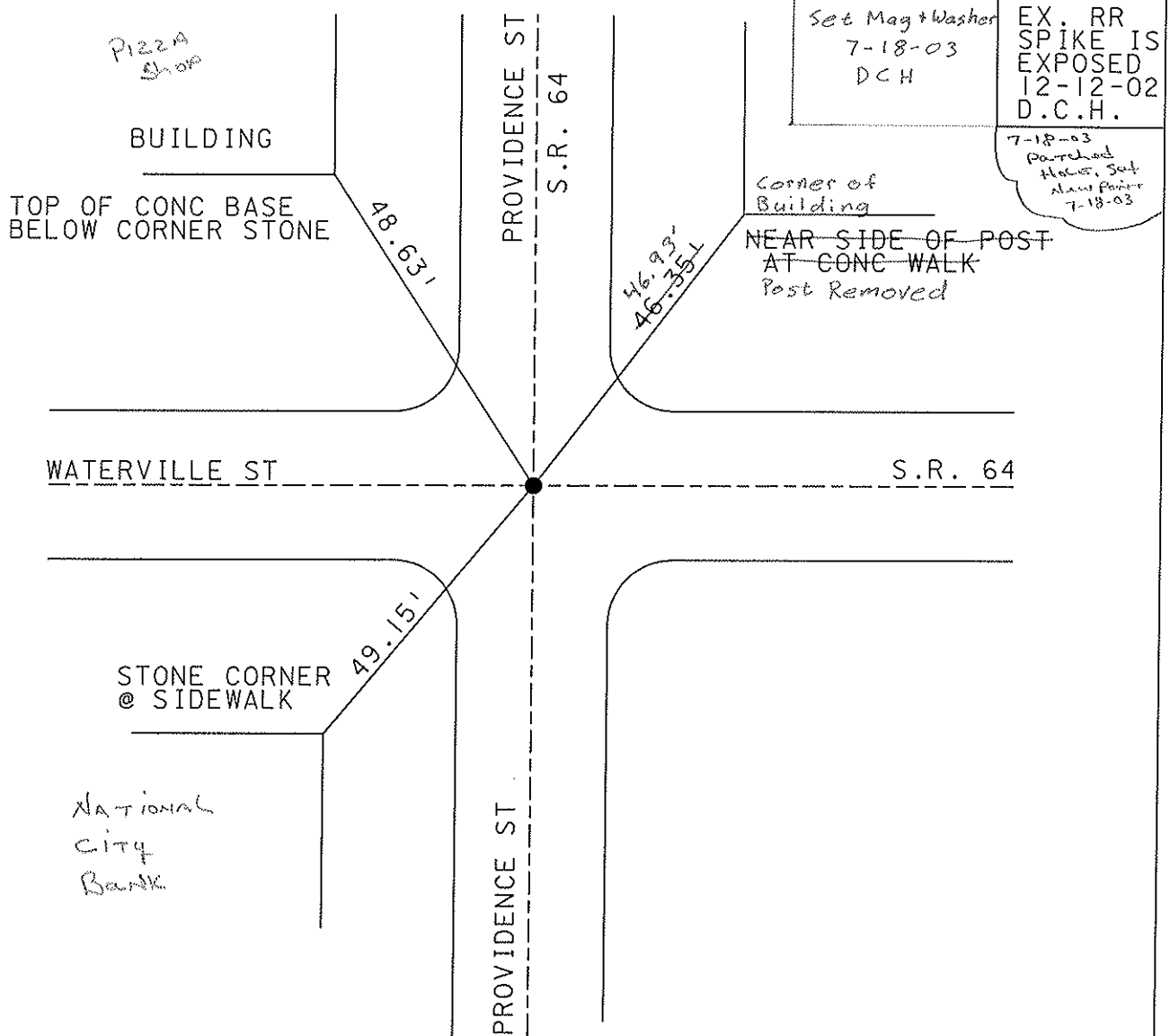
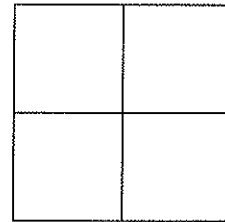
TYPE MONUMENT SM. RR SPIKE

ON SURFACE - ~~BELOW~~ YES

~~LEFT - Q~~ PAV'T - ~~RIGHT~~ N-S RD.

TO EDGE PAVEMENT

S.L.M. 259+67



# O.D.O.T. DISTRICT 2 SURVEY OFFICE

PERSONNEL \_\_\_\_\_

REFERENCE NO. 29

SHEET 30 OF 49

NOTES LOEHRKE

H.C. CUETIS

R.C. Luce

DATE 8-9-91

WEATHER \_\_\_\_\_

TEMP. \_\_\_\_\_

ROUTE S.R. 64

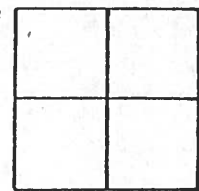
COUNTY LUCAS

TOWNSHIP WATERVILLE

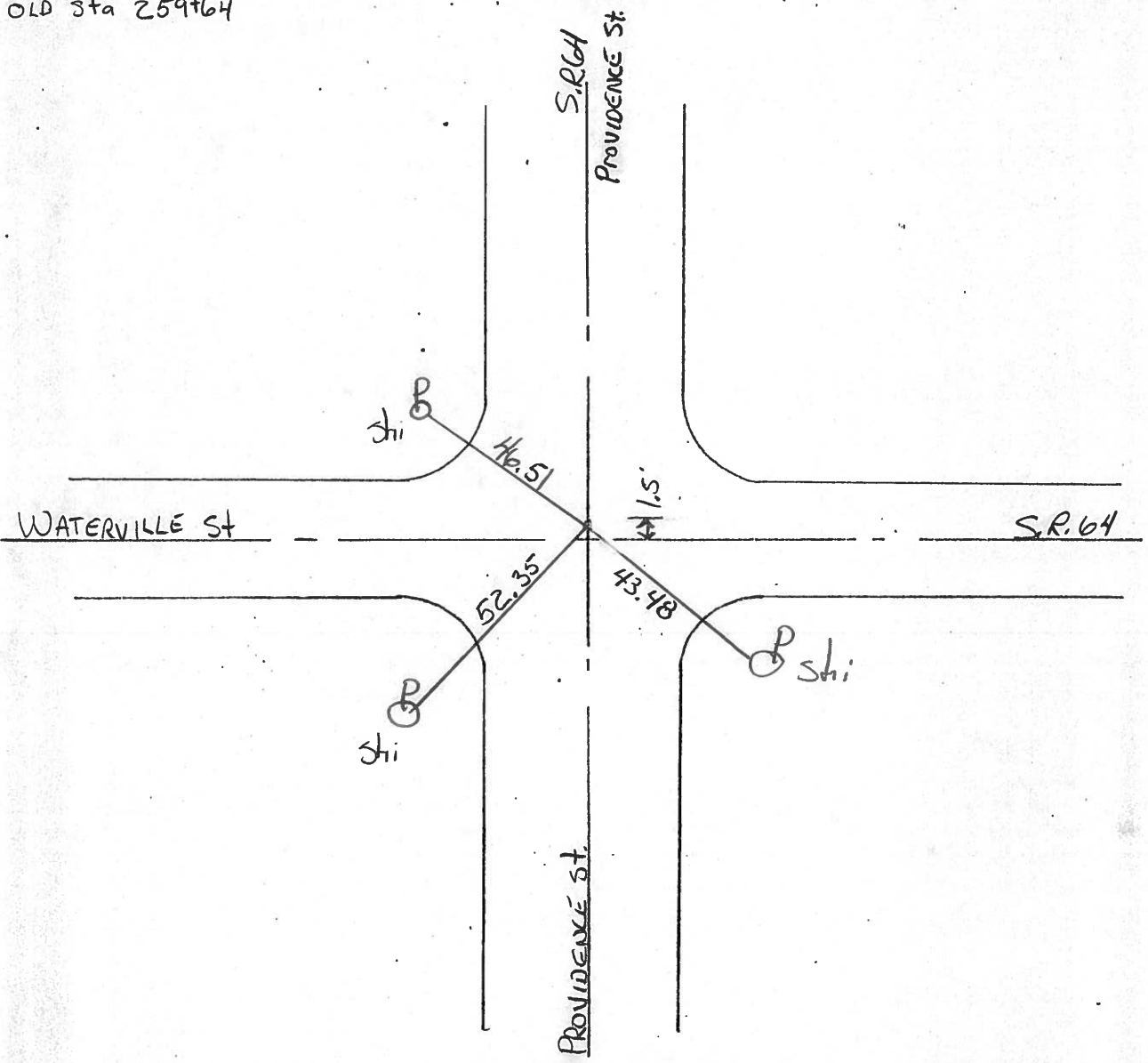
SECTION \_\_\_\_\_

T. \_\_\_\_\_ R. \_\_\_\_\_

TYPE MONUMENT Sm. R.R. Spike Set Sm. R.R. Spike  
 ON SURFACE - BELOW yes 3-5-92  
 LEFT- & PAW'T. - RIGHT of N-S Roads 1.5' N of E-W  
TO EDGE PAVEMENT 4  
 S.L.M. 259+67



OLD Sta 259+64



PERSONNEL TITLE PERSONNEL TITLE

Stone

COUNTY Lucas

DATE 5 April 77

Chow

S. R. 69

WEATHER Cold

SEC. Whitchose

TEMP. 38°

DESCRIPTION

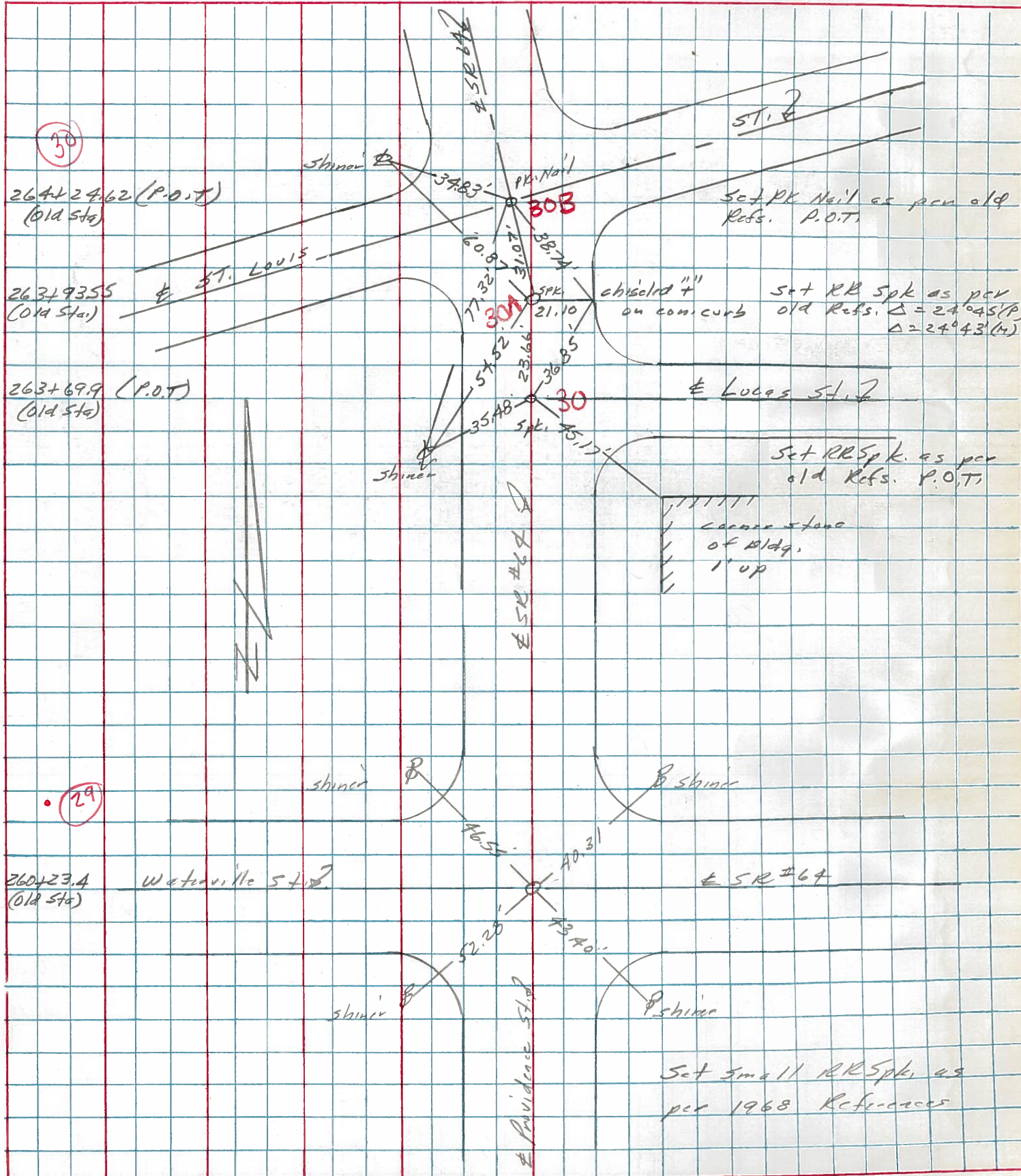
References to Control Points

JOB NO.

LEFT

CENTER LINE

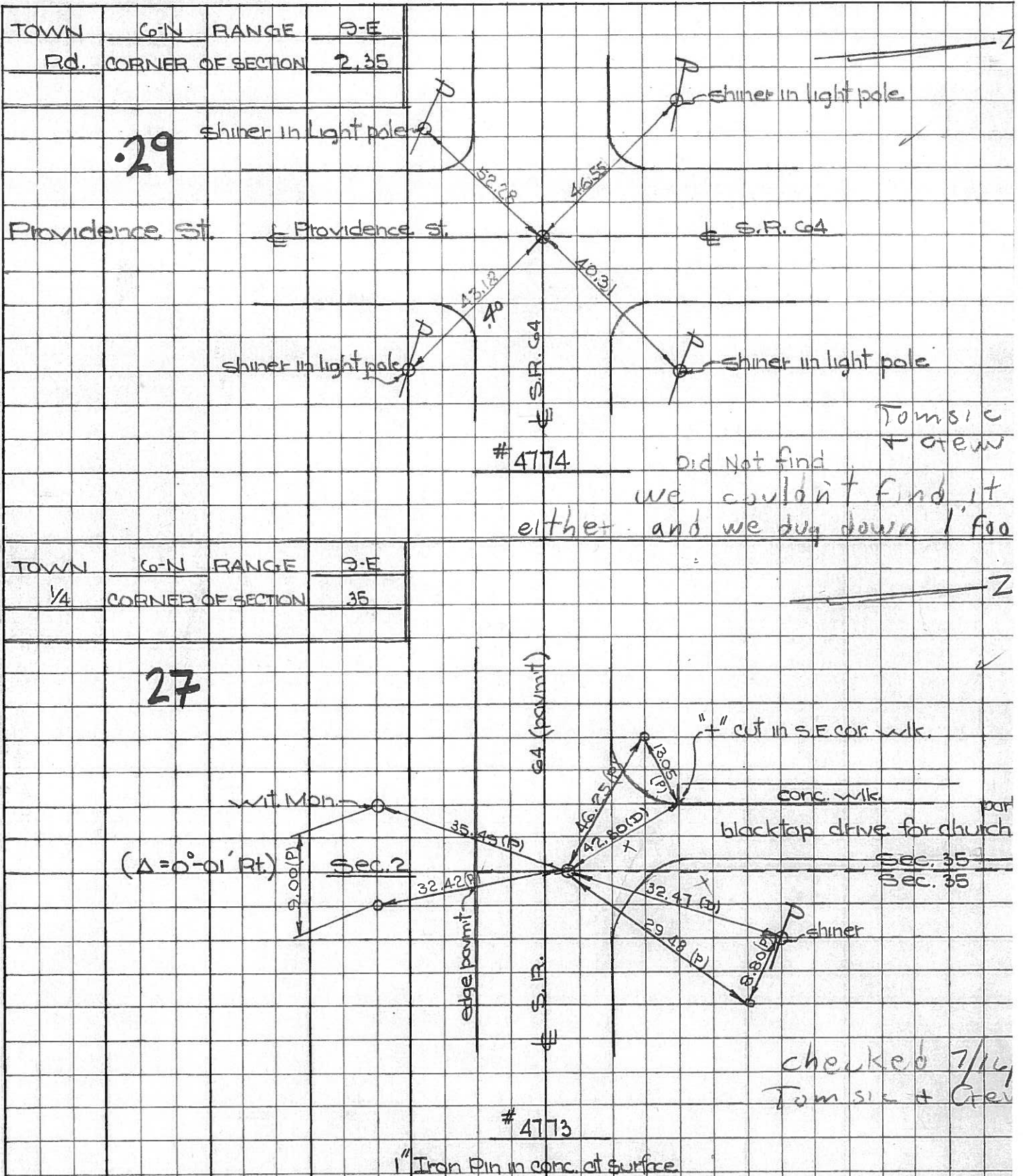
RIGHT





PERSONNEL TITLE PERSONNEL TITLE COUNTY Lucas DATE July 31, 1960  
 D. Curtis S. R. Co4 WEATHER mild  
 J. Teal SEC. TEMP. 75°±

DESCRIPTION S.R. Co4 - Ref. Mon. & Control Points JOB NO. 02994(0)



PERSONNEL TITLE PERSONNEL TITLE

COUNTY Lucas DATE 2 Mar. 66

Stone

Beck

Schroder

S. R. #64

WEATHER Mild

SEC. whitehouse - W.

TEMP. 50°

DESCRIPTION

References To Central Pts.

JOB NO.

LEFT

CENTER LINE

RIGHT

N&S  $\frac{1}{2}$  Sec. 2

None

.29

Int. Providence St.

40.31'

N.E. To Shiner in' L.P. (D)

Fd. 1" I. Pin

43.18'

S.E. To Shiner in' L.P. (D)

7" Below Surface

46.55'

N.W. To Shiner in' L.P. (D)

52.28'

S.W. To Shiner in' P.P. (D)

PT  $\Delta$  = Lt.

None

Near Int. Lucas St.

Int. Shepler St.

None

& Providence St.

34

Int. Shepler St. &

22.51'

S.S.W. To Shiner in' P.P. (D)

Centerville St.

54.84'

N. To S.W. Cor. Fdn. To House (D)

$\Delta$  = Rt.

85.53'

W. To Shiner in' P.P. (D)

Fd. Square Nut

75.05'

W.N.W. To Shiner in' 30" Tree (D)

To Surface

36

#212

E&W  $\frac{1}{2}$  Sec. 34 & 35

55.26'

N. To S.E. Cor. Porch Fdn. (D)

Whitehouse Corp. Linc

26.45'

N.W. To Shiner in' T.P. (D)

Fd. 1" I. Pin

26.63'

S. To Shiner in' P.P. (D)

2" Below Surface

Reed

Personnel

Title

*Mearitt*  
*Jackson*  
*Kadnoska*  
*Carpenter*

Date *12-3-51* County *LUCAS* Sheet No. *1*

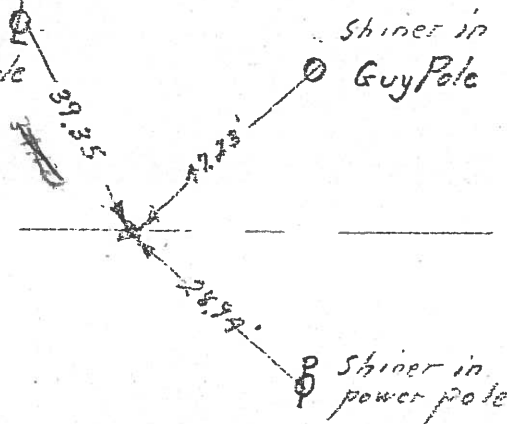
Weather *Clear* S. R. No. *64* Section *Whitchew* Job No.

254+95.4  $\frac{1}{2}$  GILEAD ST.

28A

Shiner in light pole

Shiner in Guy Pole

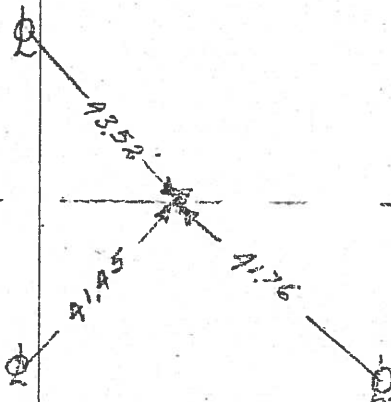


260+23.4  $\frac{1}{2}$  Waterville & Providence St.

.29

Providence

ST.



Waterville