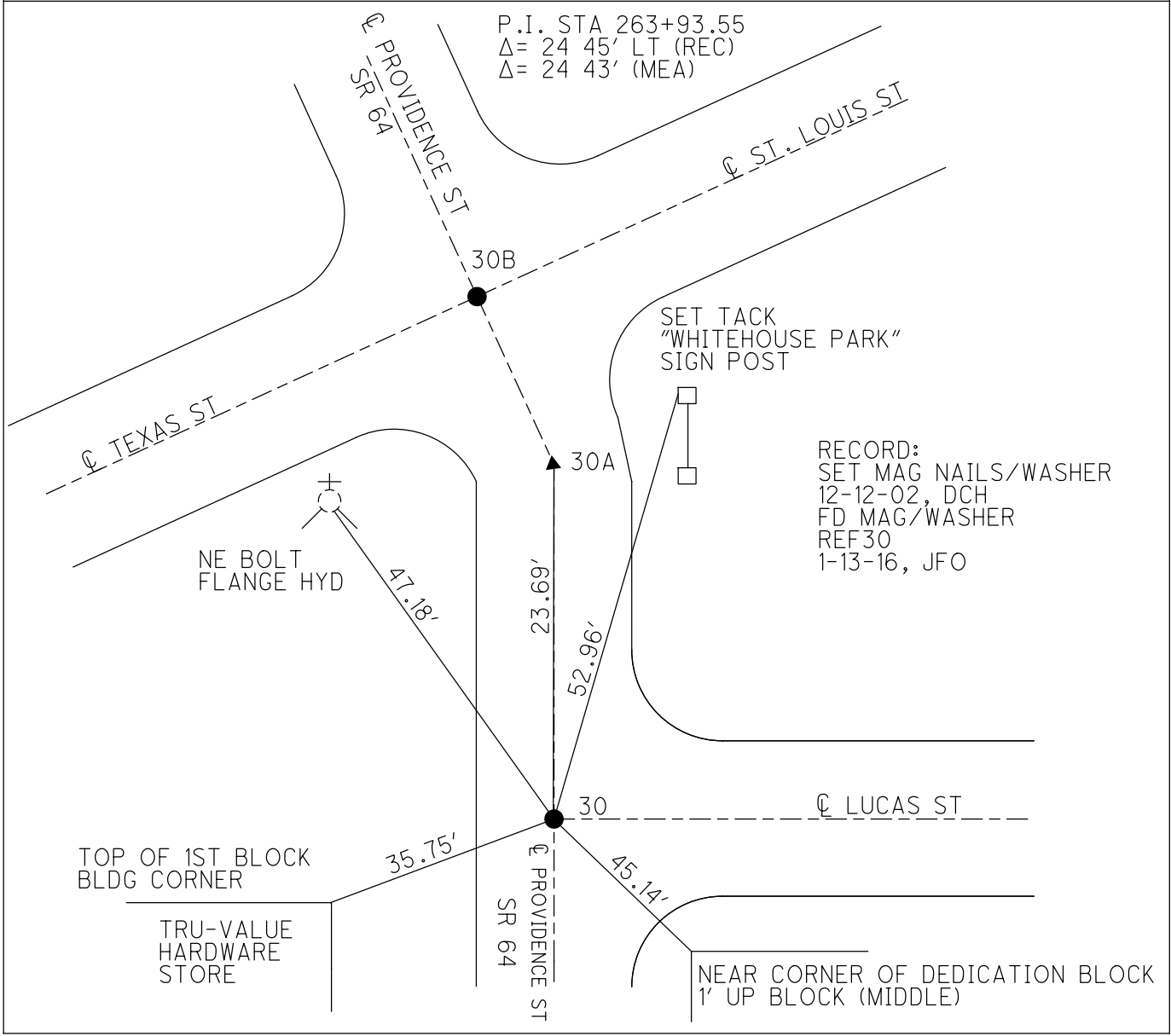
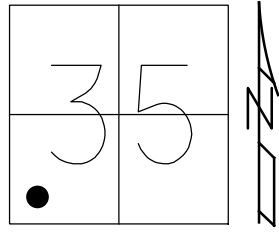


O.D.O.T. DISTRICT 2 SURVEY OFFICE (USE ONLY)

PERSONNEL _____ REFERENCE NO. 30 SHEET 22 OF 50
 NOTES RHOADES DATE 6-16-17 ROUTE SR 64
 H.C. POORE WEATHER FAIR COUNTY LUCAS
 R.C. CARSON TEMP. 69° TOWNSHIP WATERVILLE
O'DONNELL SECTION 35
 T 7 N R 9 E

TYPE MONUMENT MAG/WASHER
 ON SURFACE - ~~BELOW~~ ON _____
~~LEFT~~ - CL PAV'T - ~~RIGHT~~ ON _____
24' TO RT EDGE PAVEMENT
 S.L.M. 262+10
 Grid: Northing: 677016.5522 Easting: 1611713.2728



O.D.O.T. DISTRICT 2 SURVEY OFFICE

PERSONNEL

REFERENCE NO. 30

SHEET 33 OF 47

NOTES ROUSOS

DATE 5-21-02

ROUTE S.R. 64

H.C. HOMAN

WEATHER CLOUDY

COUNTY LUCAS

R.C. MICHALAK

TEMP. 50

TOWNSHIP WATERVILLE

SECTION _____

T ___ R ___

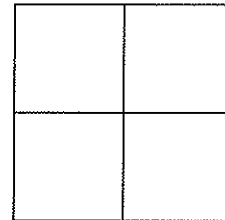
TYPE MONUMENT SM RR SPK. @ P.I. PK AT OTHERS

ON SURFACE - ~~BELOW~~ _____ YES _____

~~LEFT~~ - Q PAV'T - ~~RIGHT~~ _____ YES _____

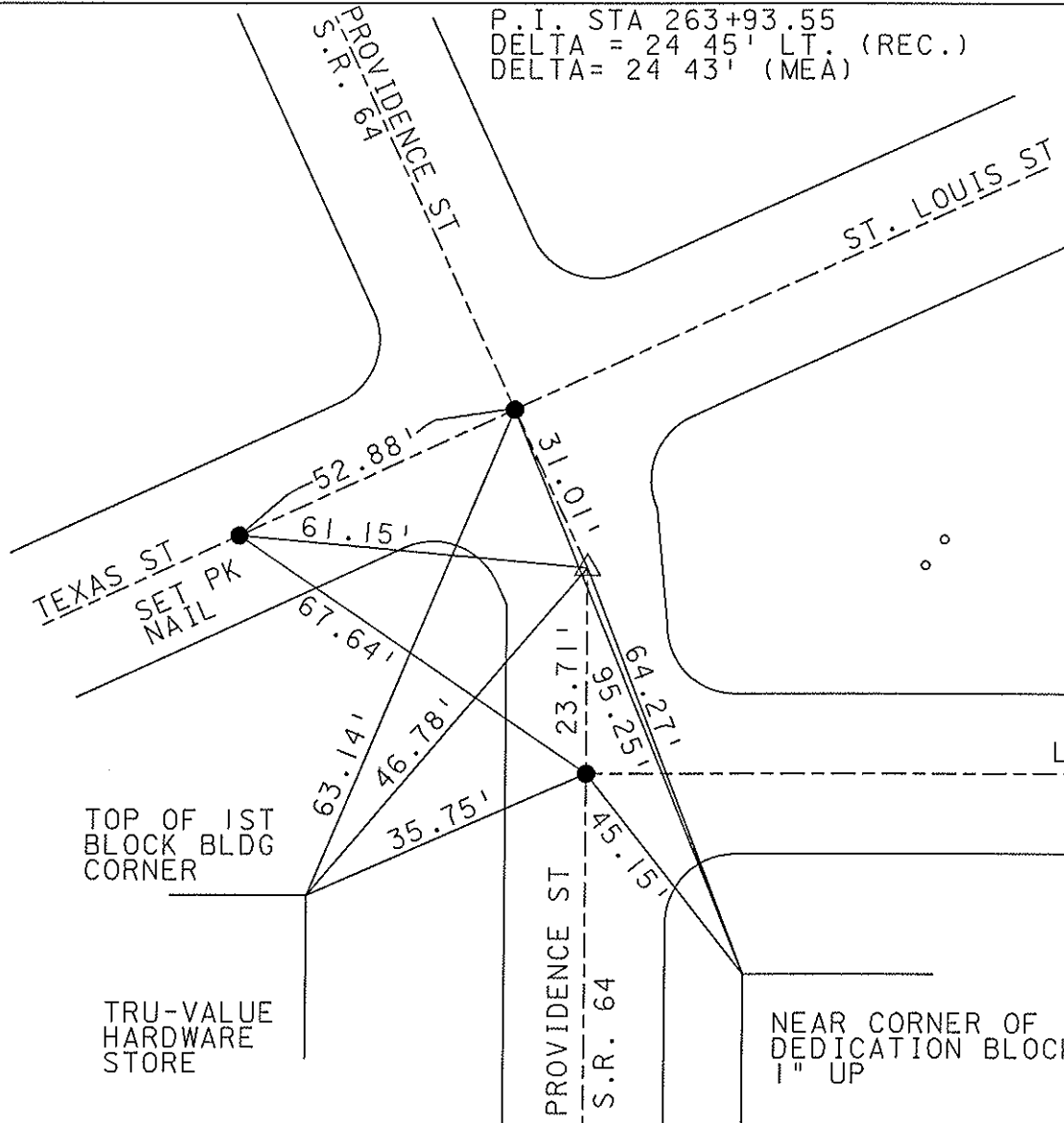
21' TO RT. EDGE PAVEMENT

S.L.M. _____ P.I. 262+67



P.I. STA 263+93.55
 DELTA = 24 45' LT. (REC.)
 DELTA = 24 43' (MEA)

SET MAG
 NAILS &
 WASHER'S
 12-12-02
 D.C.H.



O.D.O.T. DISTRICT 2 SURVEY OFFICE

PERSONNEL

REFERENCE NO. #30

SHEET 31 OF 49

NOTES LOHRKE

H.C. CURTIS

R.C. Luce

DATE 8-9-91

WEATHER Cloudy

TEMP. +70

ROUTE S.R. 64

COUNTY LUCAS

TOWNSHIP WATERVILLE

SECTION _____

T _____ R _____

TYPE MONUMENT R.R. Spike - P.I. - Set Sm. R.R. Spike

ON SURFACE - BELOW Yes

LEFT - & PAV'T. - RIGHT _____

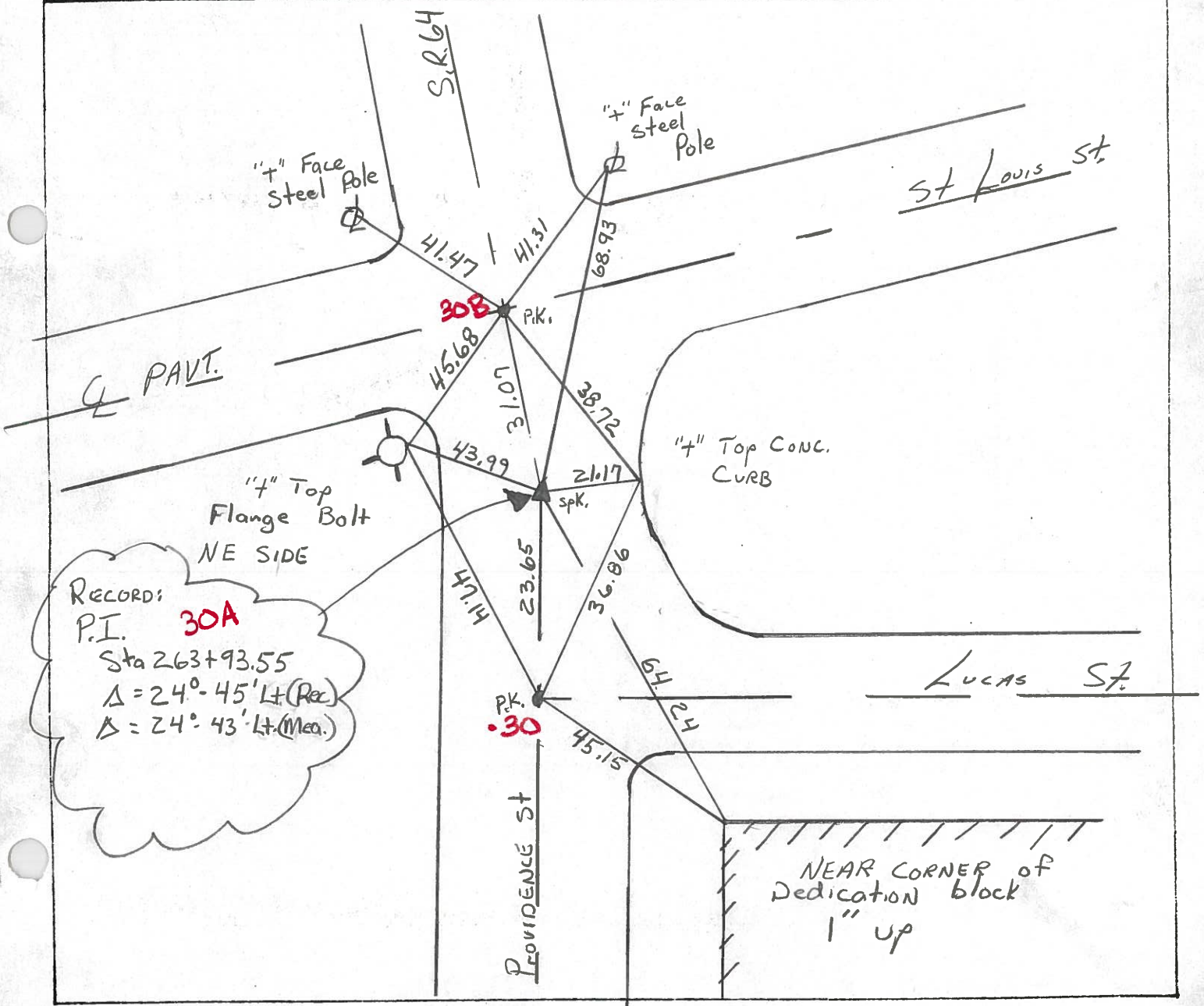
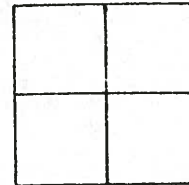
21' TO Rt EDGE PAVEMENT

S.L.M. P.I. 263+37

PK

P.K @ others

3-5-92



RECORDS:

P.I. **30A**

Sta 263+93.55

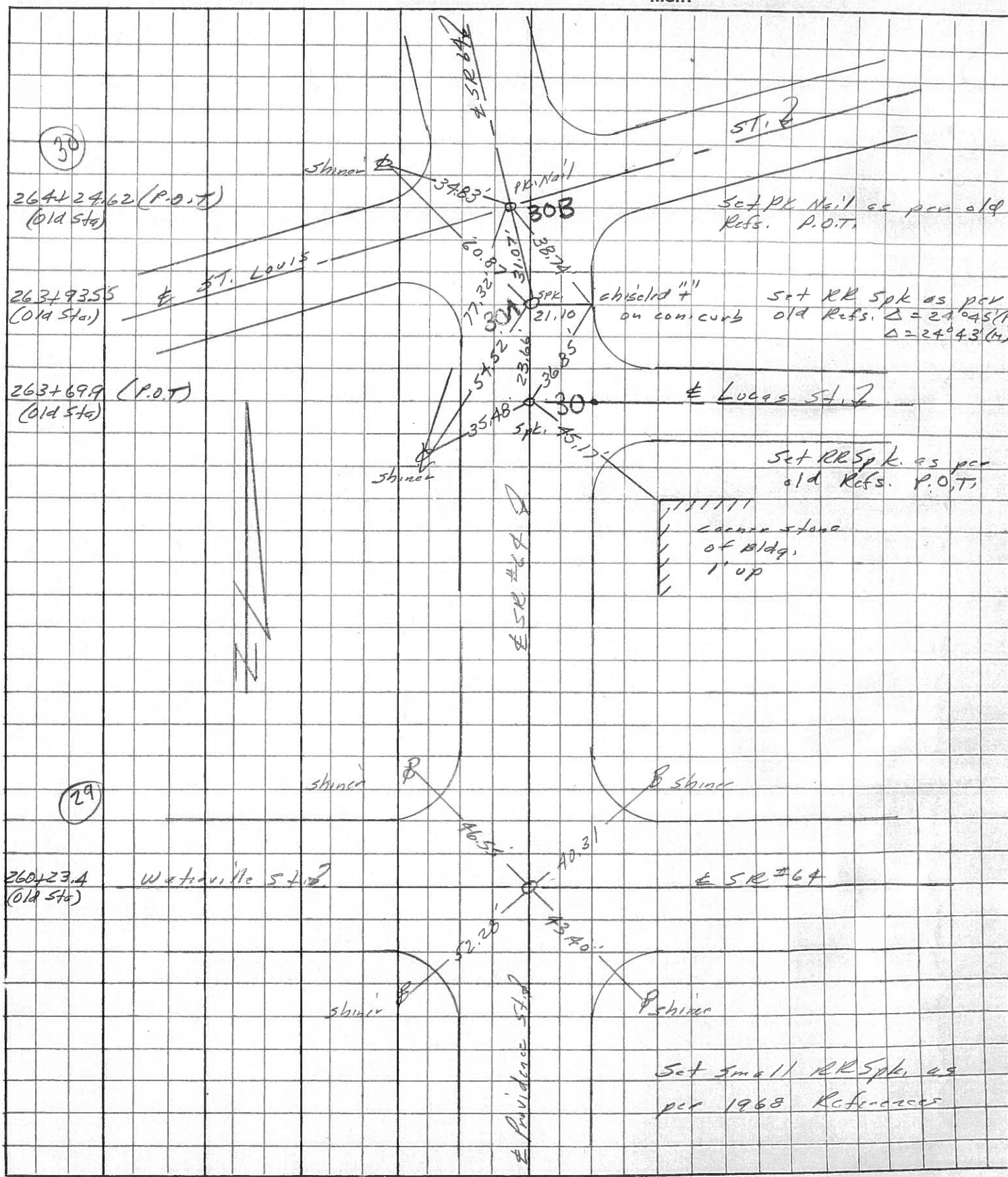
$\Delta = 24^\circ - 45' \text{ Lt. (Rec.)}$

$\Delta = 24^\circ - 43' \text{ Lt. (Meas.)}$

PERSONNEL	TITLE	PERSONNEL	TITLE
Stout			
Crew			

COUNTY Lucas DATE 5 April 77
 S. R. 67 WEATHER Cold
 SEC. Whitcomb TEMP. 38°

DESCRIPTION References to Control Points JOB NO. _____
 LEFT CENTER LINE RIGHT



Mennitt

Jackson

Radamost

Carpenter

Date 12-3-51

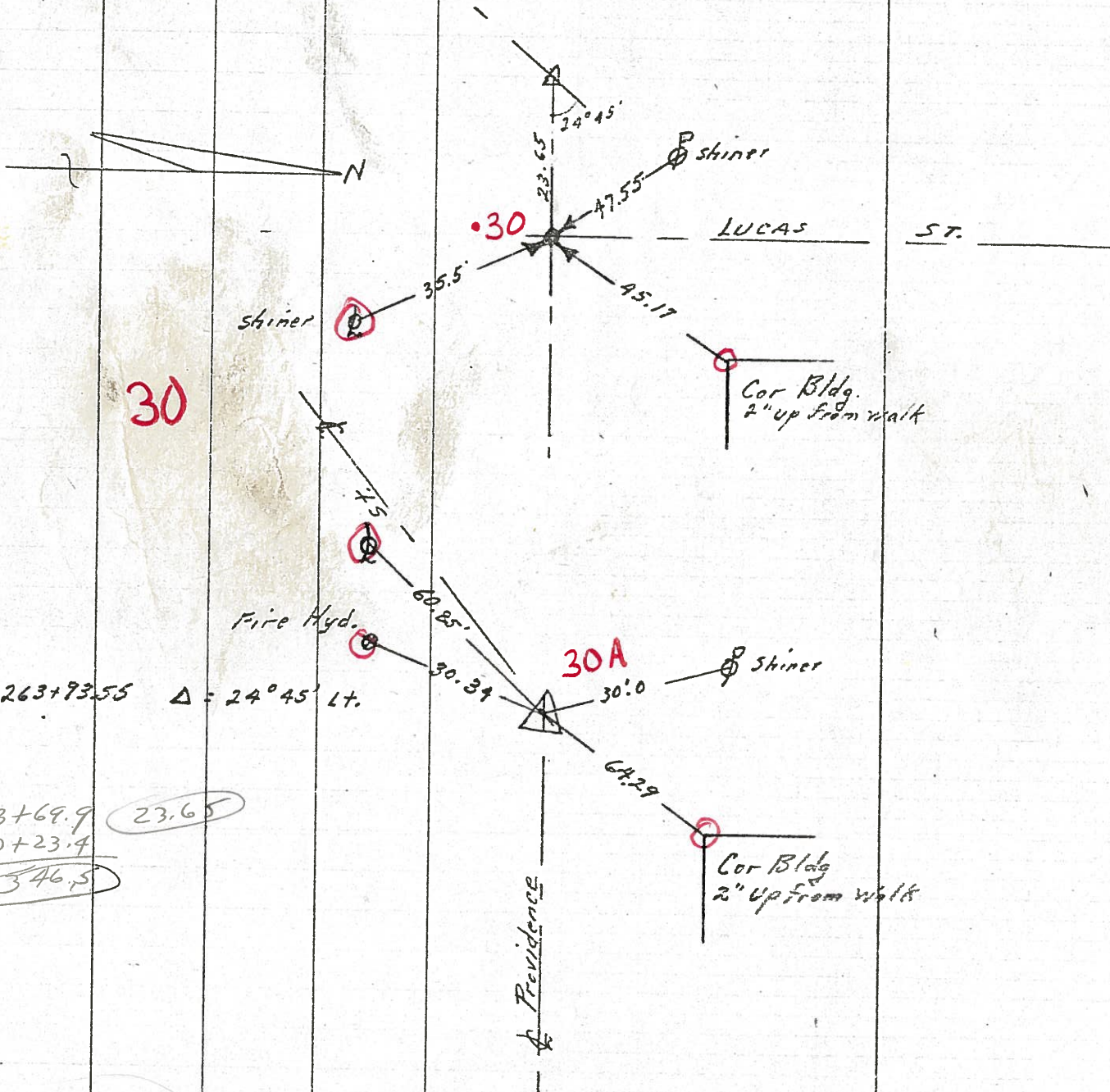
County Lucas

Sheet No. 2

Weather S. R. No. #64

Section Whitehouse Job No.

263+69.9 @ Lucas & Providence



30

30A

263+69.9 (23.65)
 0+23.4
 346.5

263+93.55 $\Delta = 24^{\circ}45'$ Lt.